

CONVENTIONAL SIGNS & ABBREVIATIONS

STATE LINE.....	EXCAVATION.....	F
COUNTY LINE.....	EMBANKMENT.....	F
TOWNSHIP LINE.....	OVERHAUL.....	H
SECTION LINE.....	SURFACING.....	S
CITY, VILLAGE, OR BOROUGH.....	GUARD RAIL.....	GR
FENCE LINE.....	INTERSECTION ANGLE.....	IA
RIGHT-OF-WAY LINE.....	RADIUS.....	R
TRAVELLED WAY.....	ELEVATION.....	EL
RAILROADS.....	VERTICAL CURVE.....	VC
RETAINING WALL.....	BENCH MARK.....	B.M.
BASE OF SURVEY LINE.....	SECTIONAL CONCRETE CULVERT.....	P.C.
LEYKE.....	CORRUGATED METAL CULVERT.....	C.M.
GRAVEL PIT.....	CULVERT HAUL.....	P.L.H.
SAND PIT.....	TON MILES.....	T.M.
CLAY PIT.....	PLACE.....	P
ROCK QUARRY.....	IN PLACE.....	INP.
CULVERTS.....	REPLACE.....	REP.
PLAIN.....	RIGHT.....	R
WITH FACEWALLS.....	LEFT.....	L
WITH WINGWALLS.....	HAND DITCHING.....	H.D.
DROP INLET.....	POINT OF CURVE.....	P.C.
POWER POLE LINE.....	POINT OF TANGENT.....	P.T.
TELEPHONE OR TELEGRAPH LINE.....	POINT OF INTERSECTION.....	P.I.
MARSH.....	SPECIAL EXCAVATION.....	S.E.
HEDGE, BRUSH, OR TIMBER.....	SPECIAL FLOWING.....	S.P.
GROUND ELEVATION.....	TELEPHONE POLE.....	Tel.P.
GRADE ELEVATION.....		

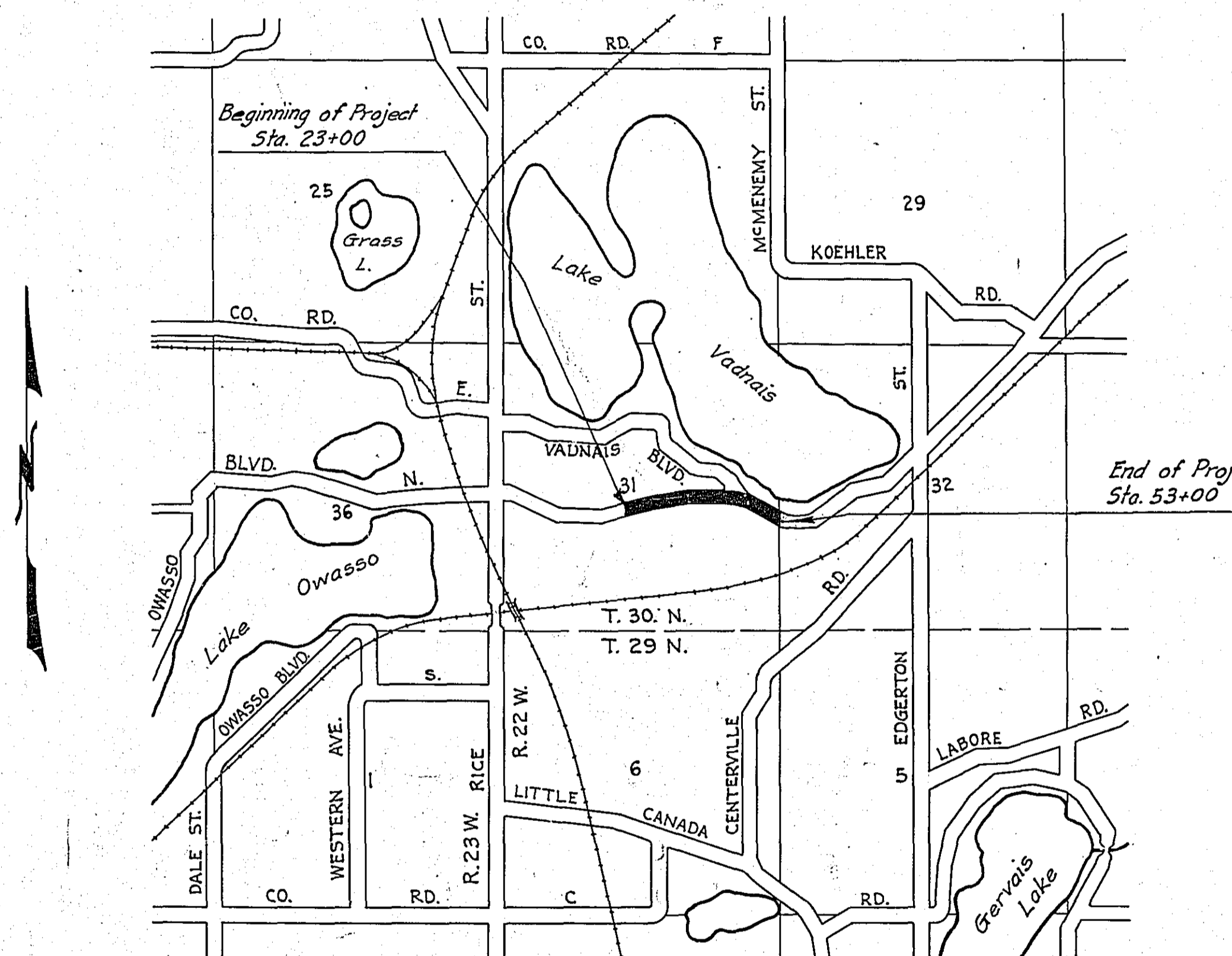
OFFICE OF COUNTY SURVEYOR
 RAMSEY COUNTY
 Plan and Profile of County Project No. 34-W32

From a point 230.03 ft. S. and 123.37 ft. W. of Cen. Sec. 31-30-22 To a point 12 ft. E. and 372 ft. S. of $\frac{1}{4}$ Cor. Sec. 31-30-22

GROSS LENGTH 3000.0 FEET 0.57 MILES
 LENGTH OF EXCEPTION 350 FEET 0.07 MILES
 NET LENGTH 2650.0 FEET 0.50 MILES

PLAN, 1 Inch = 100 Feet
 PROFILE, Horz. 1 Inch = 100 Feet. Vert. 1 Inch = 10 Feet
 WORKING PLANS { Horz. 1 Inch = 100 Feet
 Vert. 1 Inch = 10 Feet
 Cross-Sections, 1 Inch = 10 Feet

LAYOUT
 SCALE, 1 Inch = 2640 Feet



INDEX OF SHEETS

Sheet No. 1.	Title Sheet and Layout Map
" No. 2.	Typical Cross-Sections and Statement
" No. 3.	Plan and Profile, Sta. 23+00.00 to Sta. 53+00.00
" No. 4. to 7	Cross Sections

Date of Resolution for Preparation of Plans March 19, 1934

Planned by *M. M. Carlson* ASSISTANT ENGINEER

Recommended for Approval *P. J. ...* ASSISTANT ENGINEER

Plans Approved and Recommended for Consideration *Paul J. ...* COUNTY SURVEYOR

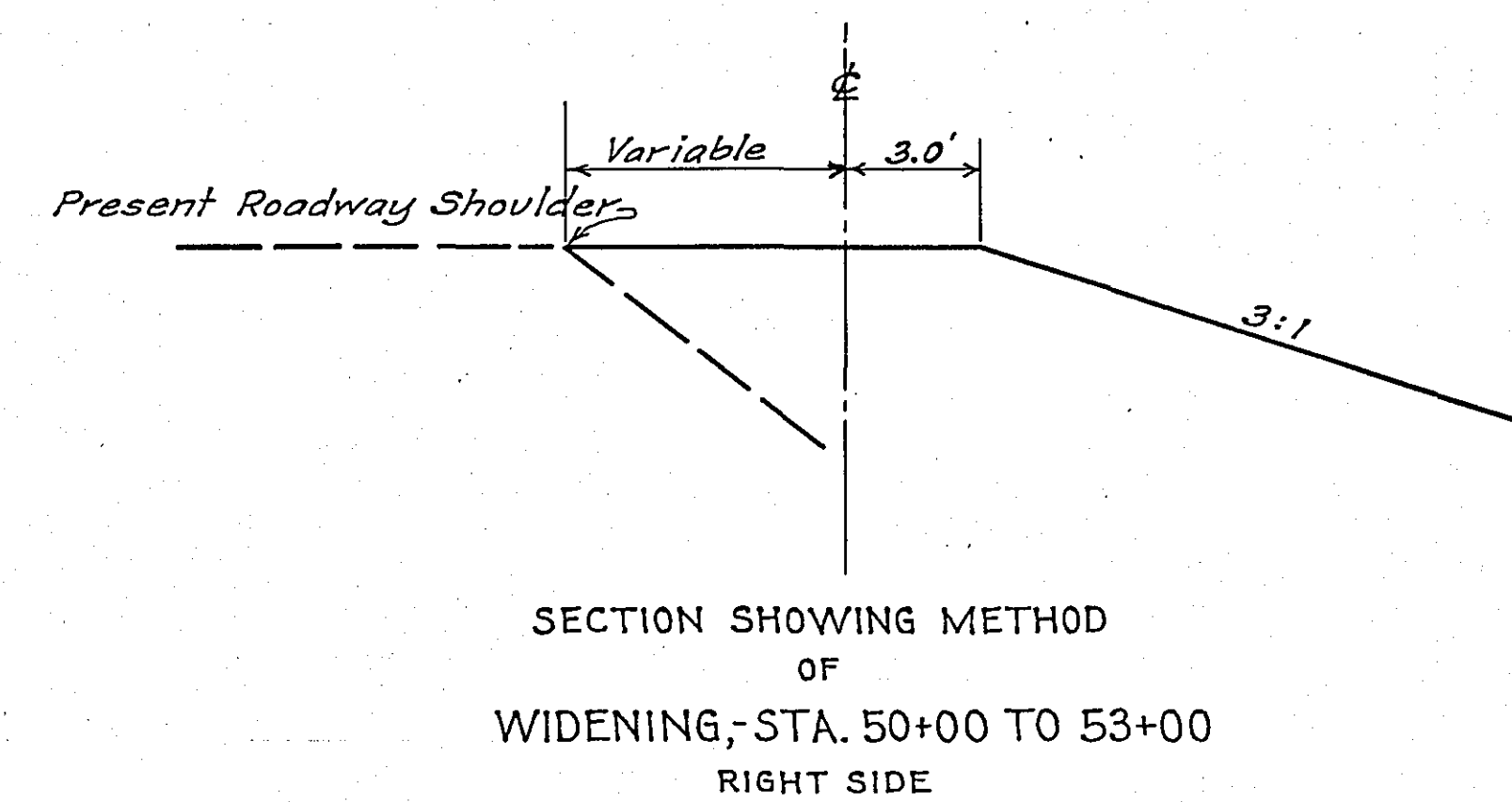
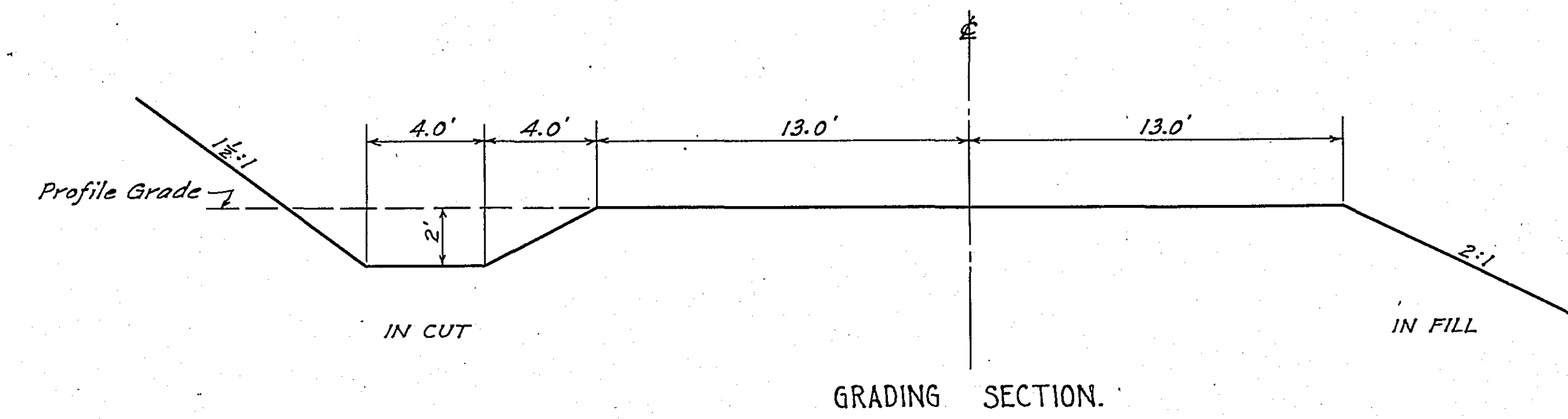
Approved *8/9* 1934 *R. J. ...* CHAIRMAN WHITE BEAR TOWN BOARD

Approved by County Board *W. W. ...* CHAIRMAN OF COUNTY BOARD

STATEMENT OF ESTIMATED QUANTITIES

CLASS	ITEM	UNIT	MILE ONE From 23+00 To 53+00	MILE From To	MILE From To	MILE From To	MILE From To	MILE From To	MILE From To	MILE From To	MILE From To	MILE From To	TOTAL ESTIMATED QUANTITIES
GRADING	1	Clearing	Trees	34									34
	2	Grubbing	Trees	46									46
	3	Clearing	Acres										
	4	Grubbing	Acres	1.02									1.02
	5	Excavation	Earth	Cu. Yds.	1793								1793
	6	Excavation	Loose Rock	Cu. Yds.	35								35
	7	Excavation	Solid Rock	Cu. Yds.	20								20
	8	Excavation	Overhaul	Cu. Yds.	9480								9480
	9	Excavation	Special	Cu. Yds.									
	10	Excavation	Hand Ditch	Cu. Yds.									
	11	Install	12" C.M.	Lin. Ft.									
	12	Install	15" C.M.	Lin. Ft.	60								60
	13	Install	18" C.M.	Lin. Ft.									
	14	Install	24" C.M.	Lin. Ft.									
	15	Install		Lin. Ft.									
	16	Install		Lin. Ft.									
	17	Install	18" Culv.	Lin. Ft.									
	18	Install	24" Culv.	Lin. Ft.	66								66
	19	Install	30" Culv.	Lin. Ft.									
	20	Install	36" Culv.	Lin. Ft.	72								72
	21	Install		Lin. Ft.									
	22	Install		Lin. Ft.									
	23	Remove Old Culvert		Lin. Ft.	62								62
	24	Replace Old Culvert		Lin. Ft.	62								62
	25	Finishing and Seeding	100 Sq.Yds.										
	26	Rubble Gutter	Cu. Yds.										
	27	Headwall	Concrete	Cu. Yds.									
	28	Headwall	Steel	Lbs.									
	29												
	30												
	31												
	32												
C.M. CULVERTS	1	Furnish 12" C.M.	Lin. Ft.										
	2	Furnish 15" C.M.	Lin. Ft.	60									60
	3	Furnish 18" C.M.	Lin. Ft.										
	4	Furnish 24" C.M.	Lin. Ft.										
	5	Furnish	Lin. Ft.										
	6	Furnish	Lin. Ft.										
	7	Furnish 12" C.M. Band	Each										
	8	Furnish 15" C.M. Band	Each										
	9												
	10												
P ₃ CULVERTS	1	Furnish 18" Culv.	Lin. Ft.										
	2	Furnish 24" Culv.	Lin. Ft.	66									66
	3	Furnish 30" Culv.	Lin. Ft.										
	4	Furnish 36" Culv.	Lin. Ft.	72									72
	5												
	6												
GUARD RAIL	1	Guard Rail - Cable	Lin. Ft.	1150									1150
	2	Guard Rail Anchors	Each	8									8
	3	Dummy Posts	Each										
	4												
SIDEWALKS AND CURBING	1	Concrete Curb - Straight	Lin. Ft.										
	2	Concrete Curb - Radius	Lin. Ft.										
	3	Remove Old Curb	Lin. Ft.										
	4	Remove Old Curb and Gutter	Lin. Ft.										
	5	Remove Old Sidewalk	Sq. Ft.										
	6	Replace Old Sidewalk	Sq. Ft.										
	7	Construct New Sidewalk	Sq. Ft.										
	8	Curb Inlet	Each										
	9	Catch Basin Complete	Each										
	10												
	11												
	12												
SEWER	1	12" Vitrified Sewer Pipe	Lin. Ft.										
	2	15" Vitrified Sewer Pipe	Lin. Ft.										
	3	18" Vitrified Sewer Pipe	Lin. Ft.										
	4	20" Vitrified Sewer Pipe	Lin. Ft.										
	5	24" Vitrified Sewer Pipe	Lin. Ft.										
	6	Manhole Complete	Each										
	7	Catch Basin Complete	Each										
	8												
	9												
	10												
PAVEMENT	1	Pavement - 1 Course Conc.	Sq. Yds.										
	2	Pavement - Asphaltic Conc.	Sq. Yds.										
	3	Integral Curb - 8"	Lin. Ft.										
	4	Integral Curb - 12"	Lin. Ft.										
	5	Surface Drain	Each										
	6	Surface Drain Basin	Each										
	7	Shoulders - Earth	Lin. Ft.										
	8												
STRUCTURES	1	Concrete	Cu. Yds.										
	2	Reinforcing Steel	Lbs.										
	3	Excavation	Cu. Yds.										
	4	Piling	Lin. Ft.										
	5												
	6												
	7												
	8												
	9												
	10												

DETAILS

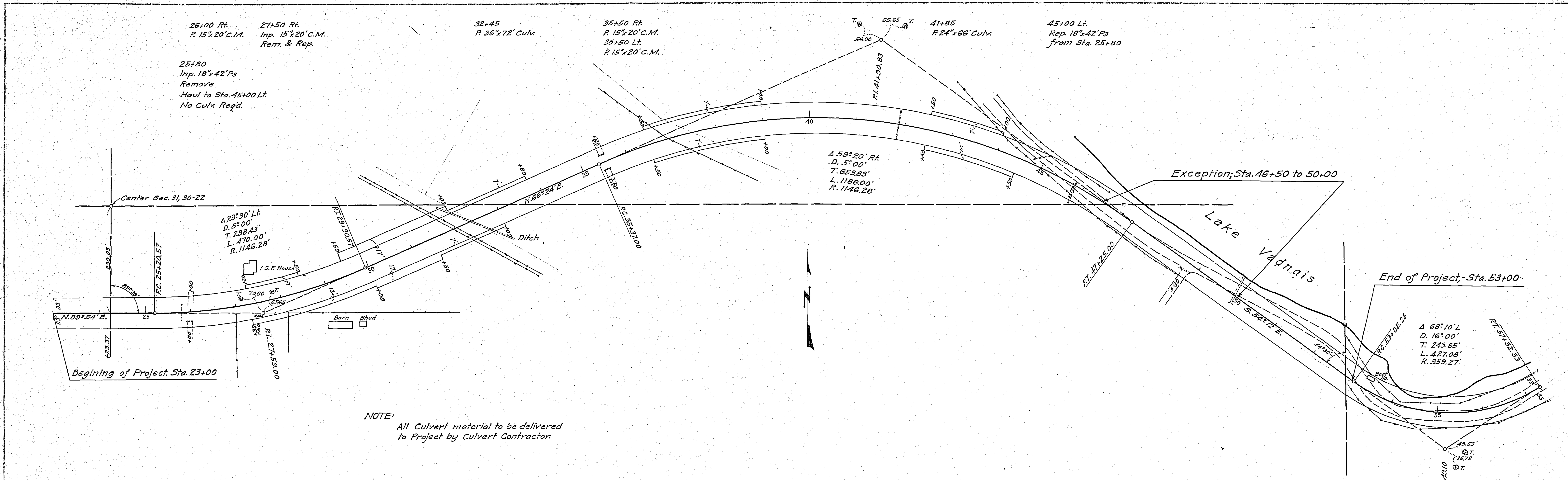


Note:
All Sections to conform to
Right-of-Way, as shown on Plans

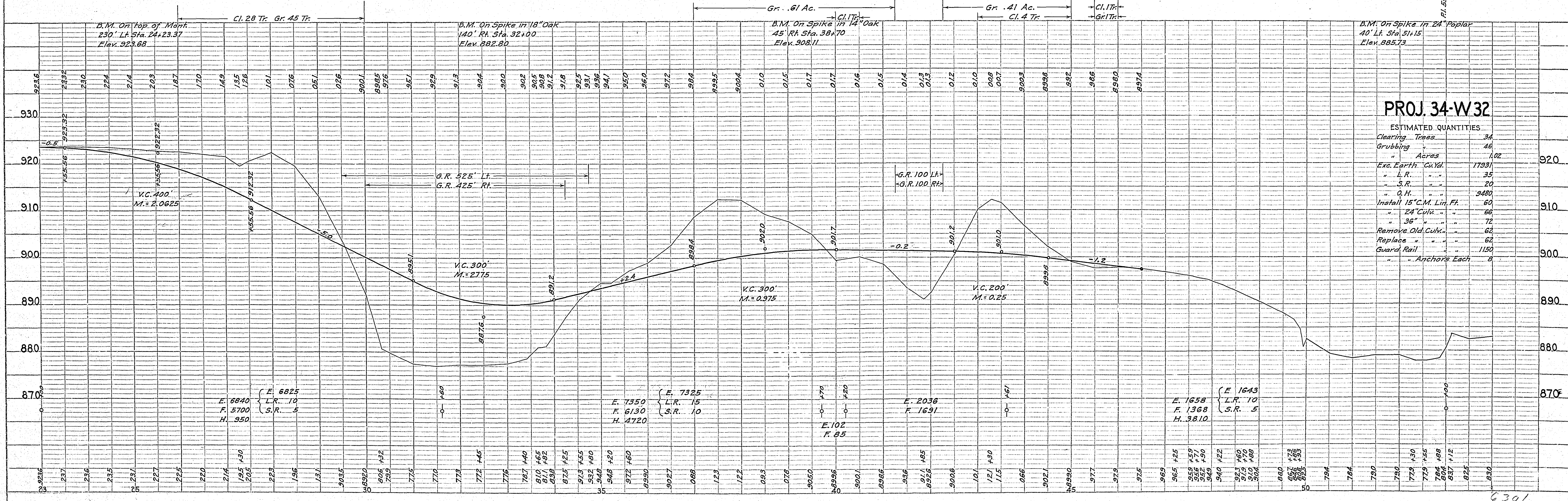
6301

PLAN	SURVEYED	DATE
	PLOTTED	
	ALIGNMENT CHECKED	
	RT. OF WAY CHECKED	
	NO.	

PROFILE	SURVEYED	DATE
	PLOTTED	
	GRADES CHECKED	
	B. M.S. NOTED	
	STRUCTURE NOTED	
	NO.	



NOTE: All Culvert material to be delivered to Project by Culvert Contractor.



PROJ. 34-W 32

ESTIMATED QUANTITIES

Clearing Trees	34
Grubbing	46
Acres	1.02
Exc. Earth Cu.Yd.	17931
L.R.	35
S.R.	20
O.H.	3480
Install 15" C.M. Lin. Ft.	60
24" Culv.	66
36" "	72
Remove Old Culv.	62
Replace "	62
Guard Rail	1150
" " Anchors Each	8