

CONVENTIONAL SIGNS & ABBREVIATIONS

STATE LINE	-----	EXCAVATION	-----	E
COUNTY LINE	-----	EMBANKMENT	-----	F
TOWNSHIP LINE	-----	OVERHAUL	-----	H
SECTION LINE	-----	SURFACING	-----	S
CITY, VILLAGE, OR BOROUGH	-----	GUARD RAIL	-----	GR
FENCE LINE	-----	INTERSECTION ANGLE	-----	A
RIGHT-OF-WAY LINE	-----	RADIUS	-----	R
TRAVELLED WAY	-----	ELEVATION	-----	EL
RAILROADS	-----	VERTICAL CURVE	-----	VC
RETAINING WALL	-----	BENCH MARK	-----	B.M.
BASE OR SURVEY LINE	-----	SECTIONAL CONCRETE CULVERT	-----	P.C.
LEVEE	-----	CORRUGATED METAL CULVERT	-----	C.M.
GRAVEL PIT	-----	CULVERT HAUL	-----	P.L.H.
SAND PIT	-----	TON MILES	-----	T.M.
CLAY PIT	-----	PLACE	-----	P
ROCK QUARRY	-----	IN PLACE	-----	INP
CULVERTS	-----	REPLACE	-----	REP
PLAIN	-----	RIGHT	-----	R
WITH FACEWALLS	-----	LEFT	-----	L
WITH WINGWALLS	-----	HAND DITCHING	-----	H.D.
DROP INLET	-----	POINT OF CURVE	-----	P.C.
POWER POLE LINE	-----	POINT OF TANGENT	-----	P.T.
TELEPHONE OR TELEGRAPH LINE	-----	POINT OF INTERSECTION	-----	P.I.
MARSH	-----	SPECIAL EXCAVATION	-----	SE
HEDGE, BUSH, OR TIMBER	-----	SPECIAL FLOWING	-----	S.P.
GROUND ELEVATION	-----	TELEPHONE POLE	-----	TEL.P.
GRADE ELEVATION	-----			

OFFICE OF COUNTY SURVEYOR
RAMSEY COUNTY

Plan and Profile of County Project No. 33-R26

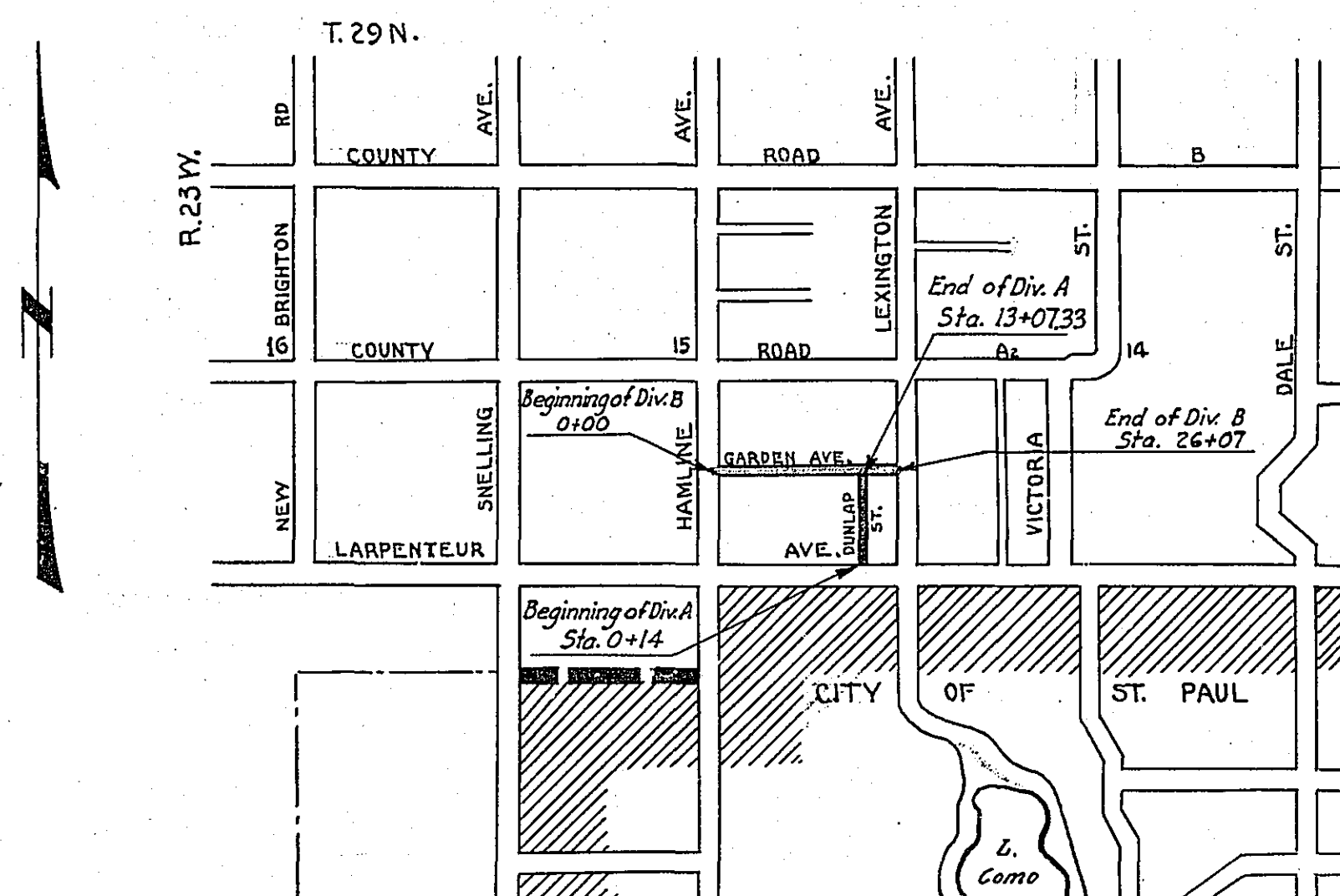
Div. A From a point 14 ft. N. & 807.95 ft. W. of the S.E. Cor. of Sec. 15-29-23, to a point 1307.33 ft. N. & 807.28 ft. W. of the S.E. Cor. of Sec. 15-29-23
Div. B From a point 1322.20 ft. N. of the S $\frac{1}{4}$ Cor. of Sec. 15-29-23, to a point 1319.89 ft. N. of the S.E. Cor. of Sec. 15-29-23

GROSS LENGTH 3900.33 FEET .74 MILES
LENGTH OF EXCEPTIONS FEET MILES
NET LENGTH 3900.33 FEET .74 MILES
PLAN, 1 Inch = 100 Feet
PROFILE, Horz. 1 Inch = 100 Feet. Vert. 1 Inch = 10 Feet
WORKING PLANS { Horz. 1 Inch = 100 Feet
Vert. 1 Inch = 10 Feet
Cross-Sections, 1 Inch = 5 Feet

LAYOUT
SCALE, 1 Inch = 2640 Feet

INDEX OF SHEETS

Sheet No. 1.	Title Sheet and Layout Map	
" No. 2.	Typical Cross-Sections and Statement	
" No. 3.	Plan and Profile, Sta. 0+14 to Sta. 13+50	Div. A
" No. 4. & 5.	Cross Sections	" A
" No. 6.	Plan and Profile, Sta. 0+00 to Sta. 26+07	" B
" No. 7. to 10.	Cross Sections	" B



Date of Resolution for Preparation of Plans DIV. "A" DEC. 5, 1932
DIV. "B" JAN. 23, 1932

Planned by *W. M. Carby* ASSISTANT ENGINEER

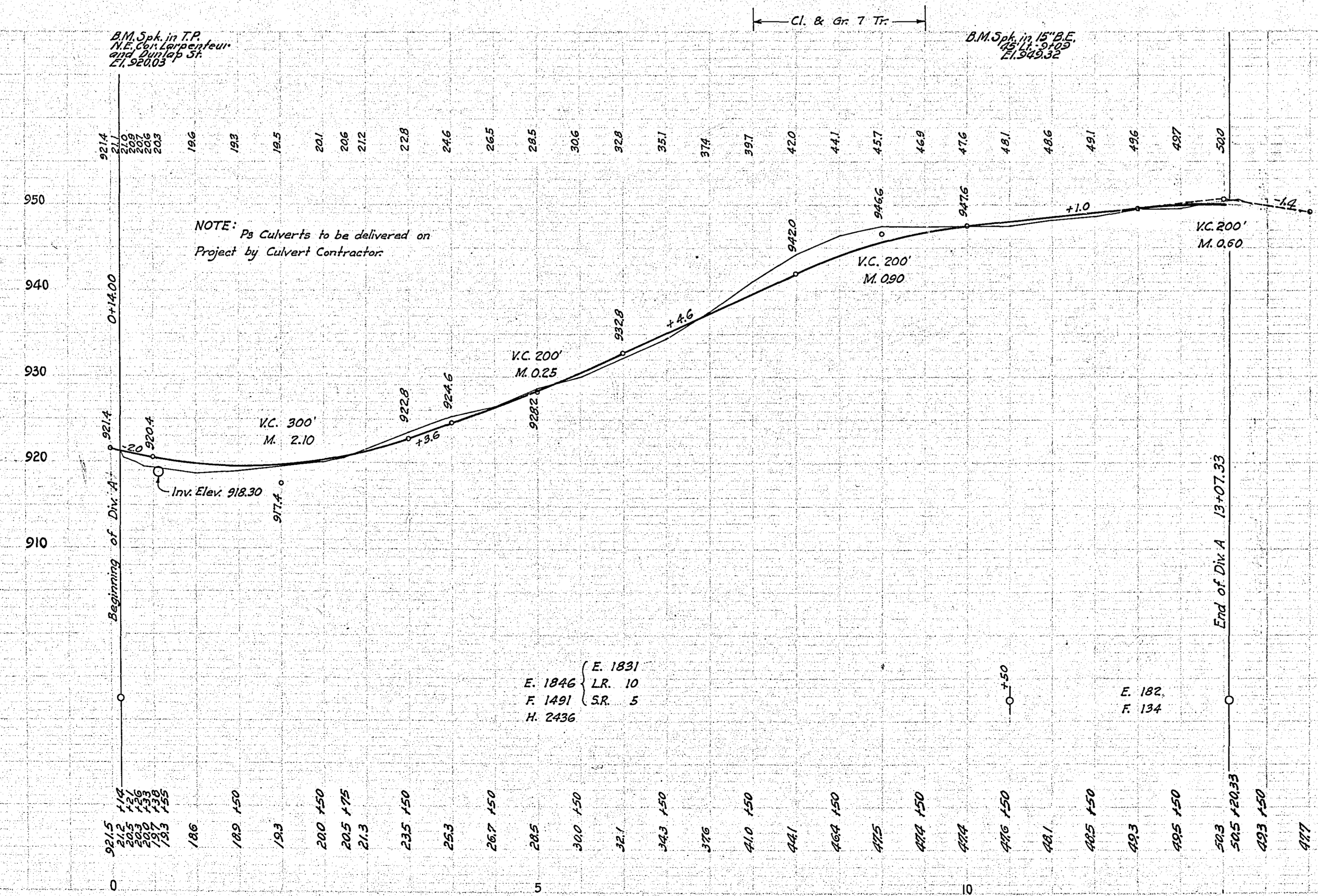
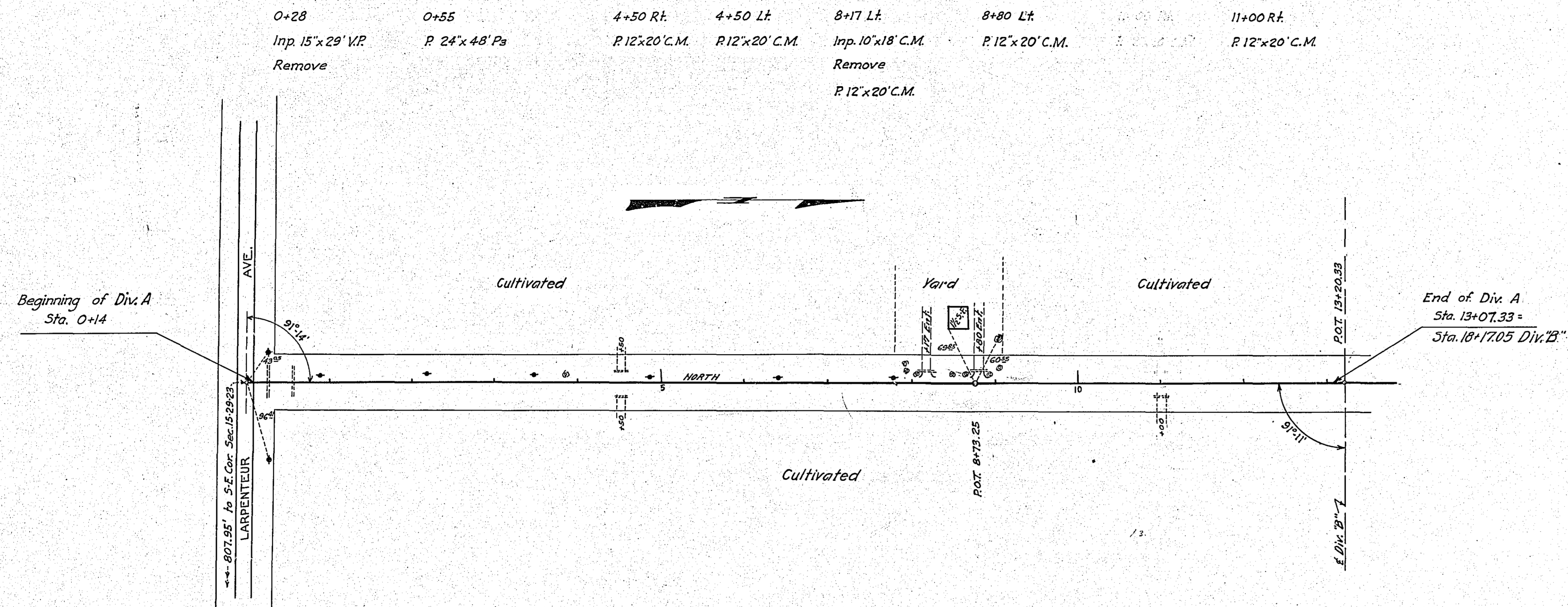
Recommended for Approval *P. Van der Ven* ASSISTANT ENGINEER

Plans Approved and Recommended for Consideration *Paul W. Coates* COUNTY SURVEYOR

APPROVED *2/16 1933 Otto Rusk* CHAIRMAN BOARD OF BOARD

Approved by County Board *William Maloney* CHAIRMAN OF COUNTY BOARD

PLAN
 SHEET NO. 3
 PROJECT NO. 33-R26
 DATE 10/15/14
 DRAWN BY [Name]
 CHECKED BY [Name]



**DIV. A
 PROJ. 33-R26
 ESTIMATED QUANTITIES**

Clearing Trees	7
Grubbing "	7
Exc. Earth Cu Yds.	2013
" L.R.	10
" S.R.	5
" O.H.	2436
Install 12' C.M. Lin. Ft.	100
" 24" P3	48
Remove Old Culv.	47
Finishing & Seeding 100 Sp. Yds.	46.33

STATEMENT OF ESTIMATED QUANTITIES AND COSTS.

ITEM	UNIT	DIV. "A"		DIV. "B"		MILE		MILE		MILE		MILE		MILE		MILE		TOTAL ESTIMATED QUANTITIES	ESTIMATED UNIT PRICES	AMOUNTS	TOTALS
		Sta. to Sta.	Sta. to Sta.	Sta. to Sta.	Sta. to Sta.	Sta. to Sta.	Sta. to Sta.	Sta. to Sta.	Sta. to Sta.	Sta. to Sta.	Sta. to Sta.	Sta. to Sta.	Sta. to Sta.	Sta. to Sta.	Sta. to Sta.	Sta. to Sta.	Sta. to Sta.				
1	Clearing	Acre																			
2	Clearing	Tree	7	73																	80
3	Grubbing	Acre																			
4	Grubbing	Tree	7	74																	81
5	Excavation - Earth	Cu. Yd.	2013	3247																	5260
6	Excavation - Loose Rock	Cu. Yd.	10	10																	20
7	Excavation - Solid Rock	Cu. Yd.	5	5																	10
8	Excavation - Overhaul	Cu. Yd.	2436																		2436
9	Special Excavation	Lin. Ft.																			
10	Hand Ditching	Cu. Yd.																			
11	Tile Drain	in.																			
12	Tile Drain	in.																			
13	Tile Drain	in.																			
14	Porous Back Fill Material	Cu. Yd.																			
15	Stone Rip-Rap	Cu. Yd.																			
16	Hauling Rip-Rap or Stone	Cu. Yd. mile																			
17	Install 12" C.M.	Lin. Ft.	100	232																	332
18	Install 15" C.M.	Lin. Ft.		44																	44
19	Install	Lin. Ft.																			
20	Install	Lin. Ft.																			
21	Install	Lin. Ft.																			
22	Install	Lin. Ft.																			
23	Install	Lin. Ft.																			
24	Install 18" P ₃	Lin. Ft.		84																	84
25	Install 24" P ₃	Lin. Ft.	48	42																	90
26	Install 30" P ₃	Lin. Ft.																			
27	Install 36" P ₃	Lin. Ft.																			
28	P ₁ Culvert Haul	Ton Mile																			
29	Remove old culv.	Ton Mile	47	277																	324
30	Replace old culv.	Lin. Ft.		174																	174
31	Finishing + Seeding	100 sq. Yds.	46 ³³	88 ²⁸																	135 ²¹
32	TOTAL ESTIMATED COST OF GRADING (IN 'TOTALS' COLUMN)																				
33	Culv. Material	Lin. Ft.																			
34	Culv. Material	Lin. Ft.																			
35	15" Culv. Material C.M.	Lin. Ft.		44																	44
36	12" Culv. Material Boards	Lin. Ft.		2																	2
37	12" Culv. Material C.M.	Lin. Ft.	100	232																	332
38	3" Culv. Material 18"	Lin. Ft.		84																	84
39	P ₃ Culv. Material 24"	Lin. Ft.	48	42																	90
40	P ₃ Culv. Material 30"	Lin. Ft.																			
41	P ₃ Culv. Material 36"	Lin. Ft.																			
42	TOTAL ESTIMATED COST OF PORTABLE CULVERT MATERIAL (IN 'TOTALS' COLUMN)																				
42	Gravel Pit Stripping	Cu. Yd.																			
43	Screening	Cu. Yd.																			
44	Loading	Cu. Yd.																			
45	Hauling	Cu. Yd. Mile																			
46	Shaping & Compacting	Man Hour																			
47	Shaping & Compacting	Man & Team Hour																			
48																					
49																					
50																					
51																					
52	TOTAL ESTIMATED COST OF GRAVEL HAUL (IN 'TOTALS' COLUMN)																				
52	Gravel Material F. O. B. Pit	Cu. Yd.																			
53	Freight (if any)	Cu. Yd.																			
54	Unloading from Cars	Cu. Yd.																			
55	TOTAL ESTIMATED COST OF GRAVEL MATERIAL (IN 'TOTALS' COLUMN)																				
55	Fine Grading-Exc. & Emb.	Cu. Yd.																			
56	Shoulders - Earth	Cu. Yd.																			
57																					
58																					
59	Pavement	Sq. Yd.																			
60	Integral Curb (One Course Concrete)	Lin. Ft.																			
61	Stopping Curb	Lin. Ft.																			
62	Surface Drain	Lin. Ft.																			
63	Surface Drain Basins	Basin																			
64	Bridge Approach Slabs (Square)	Slab																			
65	Bridge Approach Slabs (Skew)	Slab																			
66																					
67																					
68																					
69	TOTAL ESTIMATED COST OF PAVEMENT CONSTRUCTION (IN 'TOTALS' COLUMN)																				
69	Concrete	Cu. Yd.																			
70	Reinforcing Steel	Lb.																			
71	Excavation - Earth	Cu. Yd.																			
72	Excavation - Loose Rock	Cu. Yd.																			
73	Excavation - Solid Rock	Cu. Yd.																			
74	Bridge	* Bridge No.	Br. No.	Br. No.	Br. No.	Br. No.	Br. No.	Br. No.	Br. No.	Br. No.	Br. No.	Br. No.	Br. No.	Br. No.	Br. No.	Br. No.	Br. No.	Br. No.	Br. No.	Br. No.	Br. No.
75	Station																				
76	Concrete	Cu. Yd.																			
77	Reinforcing Steel	Lb.																			
78	Structural Steel	Lb.																			
79	Piling	Lin. Ft.																			
80	Temporary Crossing	Lump Sum																			
81	Removing old Bridge	Lump Sum																			
82	Bituminous Surface	Sq. Yd.																			
83																					
84																					
85	TOTAL ESTIMATED COST OF STRUCTURES (IN 'TOTALS' COLUMN)																				
85	Guard Rail	Lin. Ft.																			
86	Gutter	Lin. Ft.																			
87	Excavation for Gutter	Cu. Yd.																			
88	TOTAL ESTIMATED COST OF MISCELLANEOUS ITEMS (IN 'TOTALS' COLUMN)																				
88																					

Culverts to be delivered on Proj. by Culvert Contractor

TYPICAL CROSS SECTIONS AND DETAILS

