

CONVENTIONAL SIGNS

STATE LINE	TIMBER
COUNTY LINE	BRUSH
TOWNSHIP OR RANGE LINE	ORCHARD
SECTION LINE	ROCK LEDGE
QUARTER LINE	SAND
SIXTEENTH LINE	EDGE OF CUT
RIGHT-OF-WAY LINE	TOE OF EMBANKMENT
PRESENT ROAD PIV LINE	CATCH BASIN
LIMITED ACCESS	MANHOLE
PROPERTY LINE (Except Land Lines)	DROP INLET
VACATED PLATTED PROPERTY	FIRE HYDRANT
CORPORATE OR CITY LIMITS	ARC LAMP
TRUNK HIGHWAY CENTER LINE	OTHER LAMPS (Twin Kind)
RETAINING WALL	RAILROAD CROSSING SIGN
STEAM RAILROAD	RAILROAD CROSSING BELL
ELECTRIC RAILROAD	ELECTRIC WARNING SIGN
RAILROAD RIGHT-OF-WAY LINE	CROSSING GATE
CREEK	CATTLE GUARD
RAPIDS OR WATERFALL	OVERHEAD (Highway Over)
DRY RUN	UNDERPASS (Highway Under)
DRAINAGE DITCH	ABUTMENT, WALL & PIER
HIGH TENSION LINE	BRIDGE
POWER POLE LINE	CULVERT
TELEPHONE OR TELEGRAPH LINE	BUILDING (One Story Frame)
TELEPHONE CONDUIT	C-CONCRETE S-STONE T-TILE B-BRICK ST-STUCCO
WIRE FENCE	HEDGE
RAILROAD SNOW FENCE	IRON PIPE
BOARD OR HIGHWAY SNOW FENCE	STONE MONUMENT
STONE WALL OR FENCE	WOOD STAKE OR HUB
GAS MAIN	MEANDER CORNER
WATER PIPE	
SEWER PIPE	
DRAIN TILE	
GRAVEL PIT	
SAND PIT	
CLAY PIT	
ROCK QUARRY	
SPRINGS	
MARSH	



PIT DATA

COUNTY	PIT NO.	Located in E. 1/2 of SW. 1/4 of S.W. 1/4 Sec. 13, T.29N., R.23W.
		Dead Haul

**OFFICE OF COUNTY ENGINEER
RAMSEY COUNTY
CONSTRUCTION PLAN FOR GRADING AND PAVING
LARPENTEUR AVENUE**

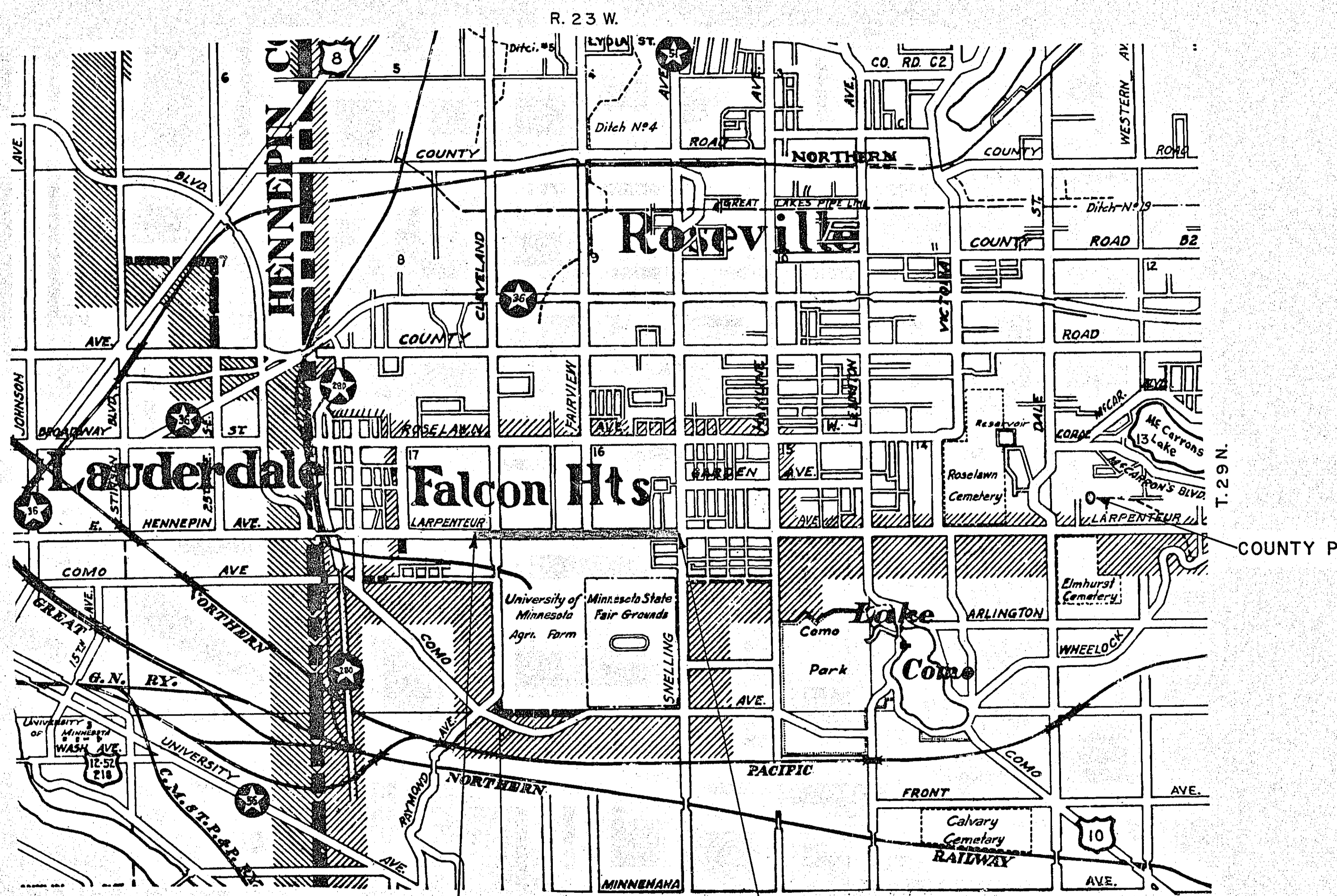
FROM 282' WEST OF CLEVELAND AVE. TO SNELLING AVE. (T.H.51)
S.A.P. 62-630-01 (C.S.A.H.30)

GROSS LENGTH	5295.5 FEET	1.04 MILES
BRIDGES-LENGTH	0 FEET	0 MILES
EXCEPTIONS-LENGTH	0 FEET	0 MILES
NET LENGTH	5295.5 FEET	1.04 MILES

SHEET NO.	DESCRIPTION
1	TITLE SHEET
2	ESTIMATED QUANTITIES
3	TYPICAL SECTIONS & PANEL LAYOUT
4-5	PLAN & PROFILE
6	SEWER LAYOUT
7	RELOCATE TRAFFIC SIGNAL
8-18	CROSS SECTIONS
19	PARKING LOT DISPOSAL AREA

SCALES

PLAN, 1 inch = 100 Feet
PROFILE, Horiz. 1 inch = 100 Feet. Vert. 1 inch = 10 Feet.
WORKING PLANS { Horiz. 1 inch = 100 Feet Vert. 1 inch = 10 Feet Cross-Sections 1 inch = 10 Feet
LAYOUT, 1 inch = 2640 Feet



BEG. OF PROJ. SAP 62-630-01 (C.S.A.H.30) STA. 50 +00
END OF PROJ. SAP 62-630-01 (C.S.A.H.30) STA. 104 +95.5

I HEREBY CERTIFY THAT THIS PLAN WAS PREPARED BY ME OR UNDER MY DIRECT SUPERVISION AND THAT I AM A DULY REGISTERED PROFESSIONAL ENGINEER UNDER THE LAWS OF THE STATE OF MINNESOTA.
Randy S. Branson COUNTY ENGINEER REG. NO. 818 DATE 4/16/50

RECOMMENDED FOR APPROVAL *Randy S. Branson* COUNTY ENGINEER DATE 4/20/50
APPROVED *Joseph E. Wilson* CHAIRMAN OF RAMSEY COUNTY BOARD DATE 4/20/50

MINNESOTA STATE HIGHWAY DEPARTMENT
RECOMMENDED FOR APPROVAL *Wm. J. Gaddan* DISTRICT ENGINEER DATE 4/16/50
APPROVED *Wm. J. Gaddan* STATE AID ENGINEER DATE 4/16/50

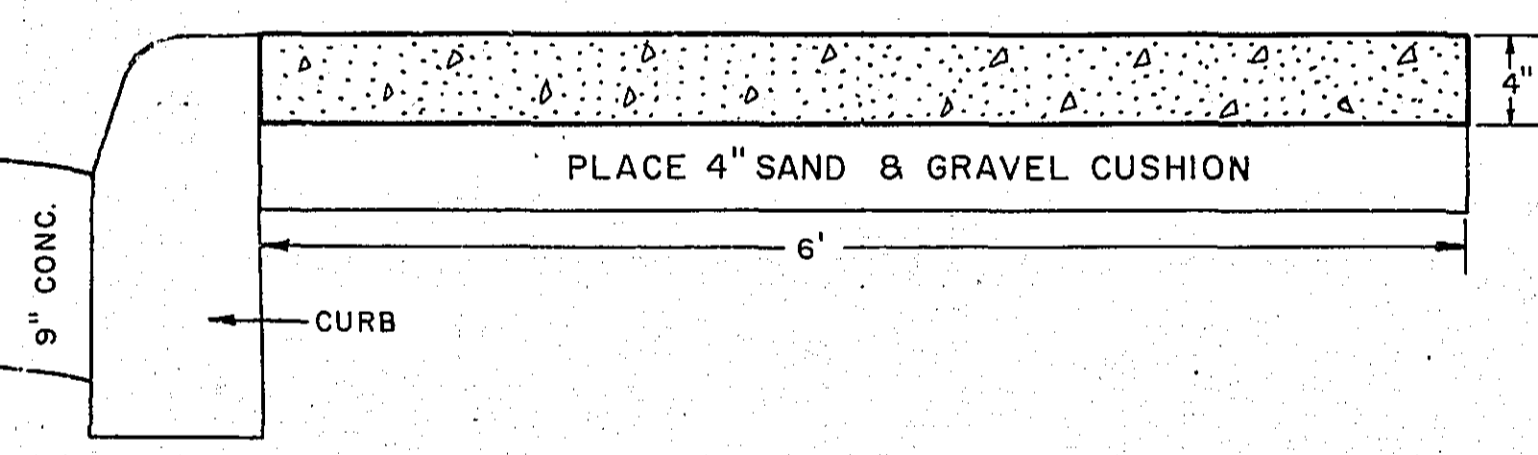
—SPECIFICATIONS—
THE "SPECIFICATIONS FOR HIGHWAY CONSTRUCTION" DATED MAY 1, 1959 SHALL GOVERN.

MICRO-FILMED

ESTIMATED QUANTITIES			
SPEC. NO.	DESCRIPTION	UNIT	TOTAL ESTIMATED QUANTITIES
2101.502	CLEARING	TREE	40
2101.507	GRUBBING	TREE	42
2104.501	REMOVE PORTABLE CULVERTS	LINEAR FOOT	500
2104.502	REMOVE PAVEMENT	SQUARE YARD	11,166
2104.504	REMOVE CURB	LINEAR FOOT	660
2104.506	REMOVE SIDEWALK	SQUARE YARD	351
2104.510	REMOVE FENCE	LINEAR FOOT	6,246
2104.510	REMOVE FENCE (4' CYCLONE)	LINEAR FOOT	387
2104.520	REMOVE BOX CULVERT STA. 52+09 1/2	STRUCTURE	1
2104.520	" " " STA. 59+53 1/2	"	1
2104.520	" " " STA. 81+36 1/2	"	1
2104.520	" " " STA. 93+31 1/2	"	1
2104.520	" " " STA. 96+57 1/2	"	1
2105.501	CLASS "A" EXCAVATION	CUBIC YARD	57,889
2201.527	SAND-GRAVEL SUB-BASE IN PLACE (CLASS 4)	CUBIC YARD(V.M.)	9,200
2202.527	GRAVEL BASE IN PLACE (CLASS 5)	CUBIC YARD(V.M.)	4,537
2301.511	CONCRETE PAVEMENT TYPE 3 (STANDARD STRENGTH - 9" THICK)	SQUARE YARD	28,949
2301.511	" " " (ENTRANCES 7" THICK)	SQUARE YARD	180
2301.521	" " " (H.E. STRENGTH 9" THICK)	SQUARE YARD	715
2301.531	REINFORCEMENT BARS	POUND	15,105
2301.536	DOWEL BAR ASSEMBLY	LINEAR FOOT	2,009
2301.549	CONCRETE TREATING OIL	GALLON	1,925
2341.501	BITUMINOUS MATERIAL FOR PRIME COAT	GALLON	3,815
2341.502	" " " TACK COAT	GALLON	636
2341.505	" " " FOG SEAL COAT	GALLON	488
2341.511	" MIXTURE - 2" BINDER COURSE	TON	474
2341.511	" " 1 1/2" WEARING COURSE	TON	199
2341.511	" " " 2" " "	TON	1,434
2341.513	PLANT MIX BITUMINOUS BASE - 3"	TON	605
2341.513	" " " " 1"	TON	107
2341.531	AGGREGATE FOR FOG SEAL COAT	CUBIC YARD(V.M.)	17
2501.512-15	F. & I. C.M. PIPE ARCH CULVERT 15"	LINEAR FOOT	342
2501.512-18	F. & I. C.M. " " " 18"	"	143
2501.522-18	F. & I. S.C. " " " 18"	"	54
2501.522-30	F. & I. S.C. " " " 30"	"	72
2501.522-42	F. & I. S.C. " " " 42"	"	74
2503.512-12	F. & I. R.C. PIPE SEWER 12"	"	73
2503.512-15	F. & I. R.C. " " " 15" CLASS 2	"	280
2503.512-18	F. & I. R.C. " " " 18" " 2	"	59
2503.512-24	F. & I. R.C. " " " 24" " 2	"	176
2503.512-27	F. & I. R.C. " " " 27" " 2	"	718
2503.512-36	F. & I. R.C. " " " 36" " 2	"	471
2503.512-42	F. & I. R.C. " " " 42" " 2	"	14
2506.506	CONSTRUCT MANHOLE, SPECIAL	"	9.88
2506.506	" " " DESIGN A OR F	"	14.98
2506.507	" " " CATCH BASIN DESIGN C OR G	"	12.45
2506.507	" " " " " H	"	16.23
2506.511	RECONSTRUCT MANHOLES	"	17.10
2506.516	F. & I. CASTING ASSEMBLIES	ASSEMBLY	15
2506.522	ADJUST FRAME & RING CASTING	"	9
2513.501	GROUTED RIP-RAP	CUBIC YARD	4
2515.532-15	F. & I. C.M. ARCH APRONS 15"	APRON	30
2515.532-18	F. & I. C.M. " " " 18"	"	12
2515.541-42	F. & I. CONCRETE APRON 42"	"	1
2515.542-30	F. & I. " " " FOR S.C.P.-A 30"	"	2
2515.542-42	F. & I. " " " FOR S.C.P.-A 42"	"	2
2521.501	CONCRETE WALK 4" THICK	SQUARE FOOT	2,910
2531.502	CONCRETE CURB DESIGN B-6	LINEAR FOOT	1,450
2531.503	CONCRETE MEDIAN	SQUARE YARD	2,120
2535.501	BITUMINOUS CURB	LINEAR FOOT	958
2574.501	ROADSIDE SEEDING	ACRE	2.1
2574.511	SEED CLASS 15	POUND	252
2576.501	SODDING	SQUARE YARD	5,404
557.621	RESETTING FENCE	LINEAR FOOT	6,182
557.621	" " (4' CYCLONE)	"	360
565.662	RELOCATE SIGNAL SYSTEM - CLEVELAND AVE.	SIG. SYSTEM	1

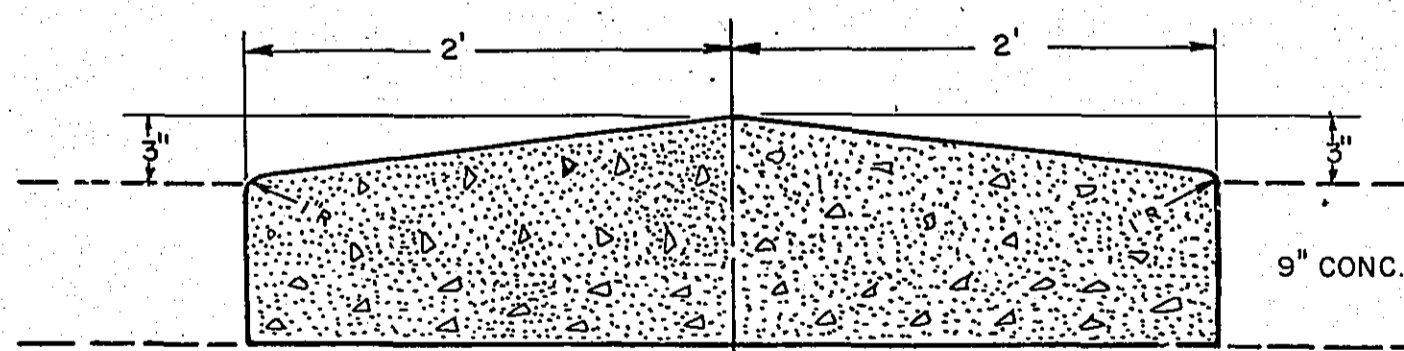
PORTABLE CULVERTS			
STATION	LOCATION	FURNISH & INSTALL	APRON
59+95	LT.	15" X 20' C.M.P.-A	2
62+36	LT.	15" X 20' C.M.P.-A	2
64+39	LT.	15" X 20' C.M.P.-A	2
66+21	RT.	NO CULV. REQUIRED	
70+62	LT.	15" X 42' C.M.P.-A	2
71+21	LT.	15" X 20' C.M.P.-A	2
72+27	LT.	15" X 20' C.M.P.-A	2
72+93	LT.	15" X 20' C.M.P.-A	2
74+05	LT.	15" X 40' C.M.P.-A	2
75+67	LT.	15" X 20' C.M.P.-A	2
75+87	RT.	15" X 20' C.M.P.-A	2
76+49	LT.	15" X 20' C.M.P.-A	2
79+08	LT.	18" X 54' S.C.P.-A	2
79+21	RT.	15" X 20' C.M.P.-A	2
81+11	RT.	15" X 20' C.M.P.-A	2
81+95	RT.	15" X 20' C.M.P.-A	2
82+80	LT.	18" X 20' S.C.P.-A	2
84+34	RT.	15" X 20' C.M.P.-A	2
85+44	RT.	18" X 30' S.C.P.-A	2
87+16	RT.	18" X 20' S.C.P.-A	2
88+57	RT.	18" X 20' S.C.P.-A	2
90+01	RT.	18" X 53' S.C.P.-A	2
52+33	€	30" X 72' S.C.P.-A	2
60+00	€	42" X 74' S.C.P.-A	2

CONCRETE SIDEWALK



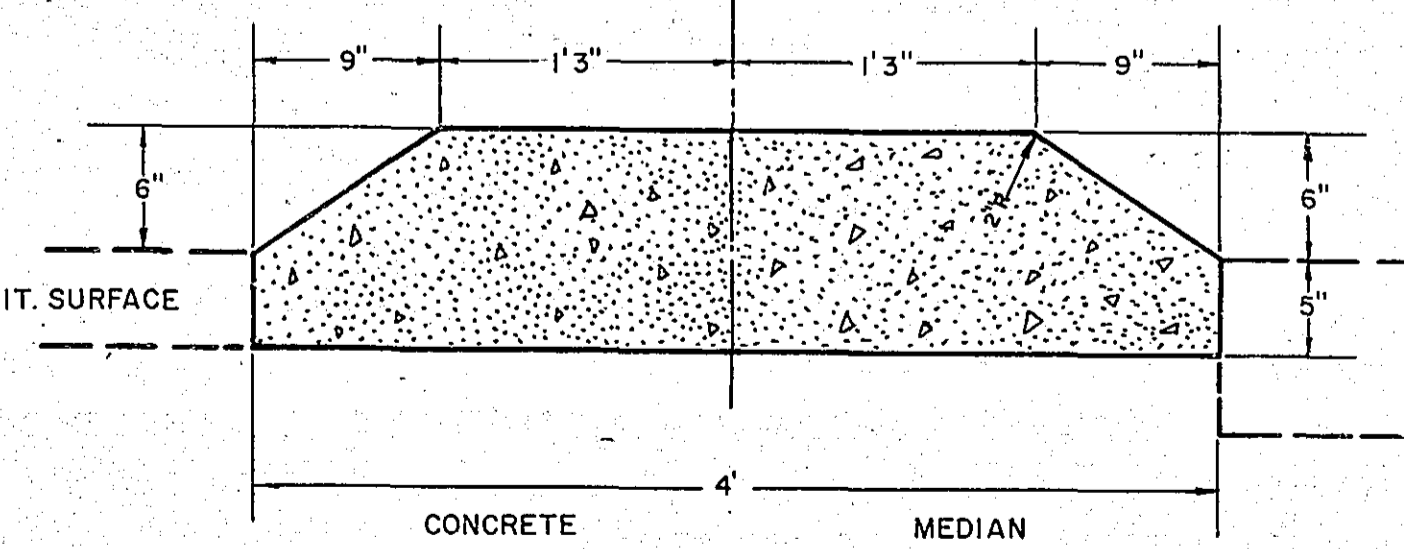
MODIFIED MEDIAN

STA. 98+04 - STA. 98+44



DETAIL OF MEDIAN

SCALE: 1" = 1'-0"
PLACE ONE 4" DIA. HOLE IN MEDIAN APPROXIMATELY 4' FROM ALL MEDIAN ENDS.

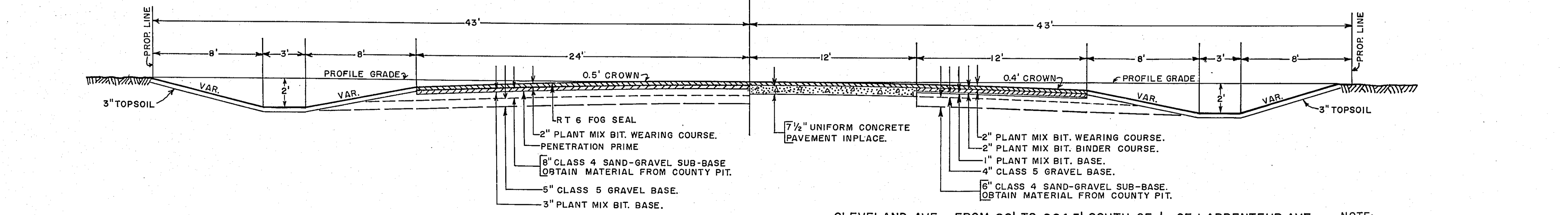
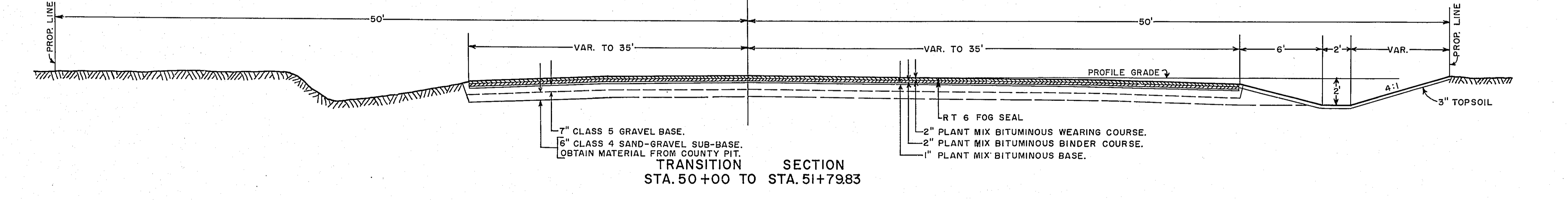
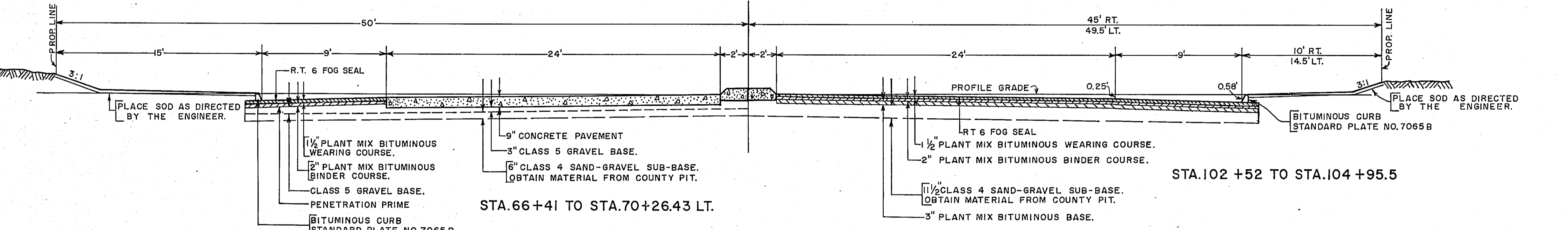
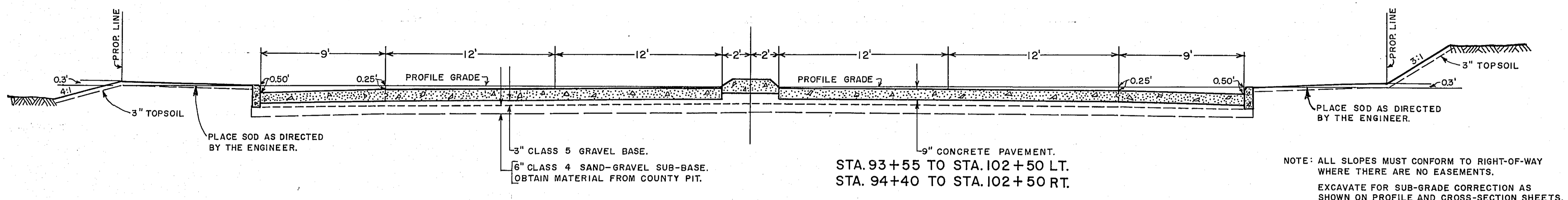
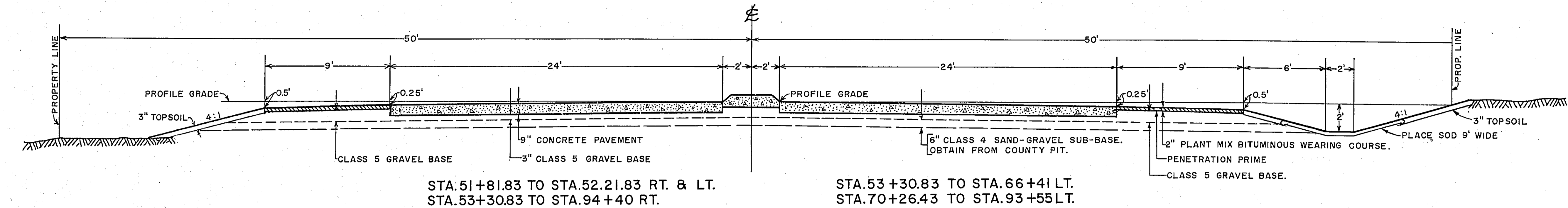


STANDARD DETAIL PLATES	
1010 C	CONCRETE PAVEMENT 9" UNIFORM X 24' (MODIFIED-SHEET 3)
1103A, 1104A, 1105A	DOWEL BAR ASSEMBLY
1120 E	CONTRACTION JOINTS
1140 E	LONGITUDINAL JOINTS
1141 A	PAVEMENT KEYWAY FOR KEYED JOINT CONSTRUCTION
1075 F	CONCRETE PAVEMENT HEADER-TYPE A
1150 E	CONSTRUCTION OF HEADER JOINT
2500 TO 2577	PAVING EQUIPMENT
3000B, 3001A	SECTIONAL CONC. CULVERT PIPE WITH REINFORCEMENT (ALTERNATE)
3040	C.M. PIPE ARCH
3100 B	CONCRETE APRON FOR R.C. PIPE
3122 A	METAL APRON FOR ARCH C.M. PIPE
4000D, 4002C, 4005D	4006C MANHOLE OR CATCH BASIN
4111 C	MANHOLE COVER CASTING
4007 A	CATCH BASIN TYPE H
4149 B	GRATE CASTING FOR CATCH BASIN
4161 C	CURB BOX CASTING FOR CATCH BASIN
4164 A	COVER & FRAME CASTING FOR CATCH BASIN
4180 D	MANHOLE STEP CASTING
4126 B & 4101 A	RING CASTING FOR MANHOLE
7020 C	CONCRETE CURB (DESIGN B) 6"
7035 D	CURB RETURNS AT ENTRANCES
7065 B	BITUMINOUS CURB
7111 B	INSTALLATION OF CATCH BASIN CASTINGS
8000A & 8009	STANDARD BARRICADE
8003 TO 8008A	WARNING SIGNS
8110 TO 8116	TRAFFIC SIGNALS
4163 B	CURB PLATE CASTING FOR CATCH BASIN
9001 C	BITUMINOUS SURFACING FOR ENTRANCES & APPROACHES
SPECIAL	ST. PAUL FOUNDRY CO. COAL RING & COVER, FIG. 21, PAGE 168, A=24, B=3 1/2, C=4, for M.H. 32 & 33

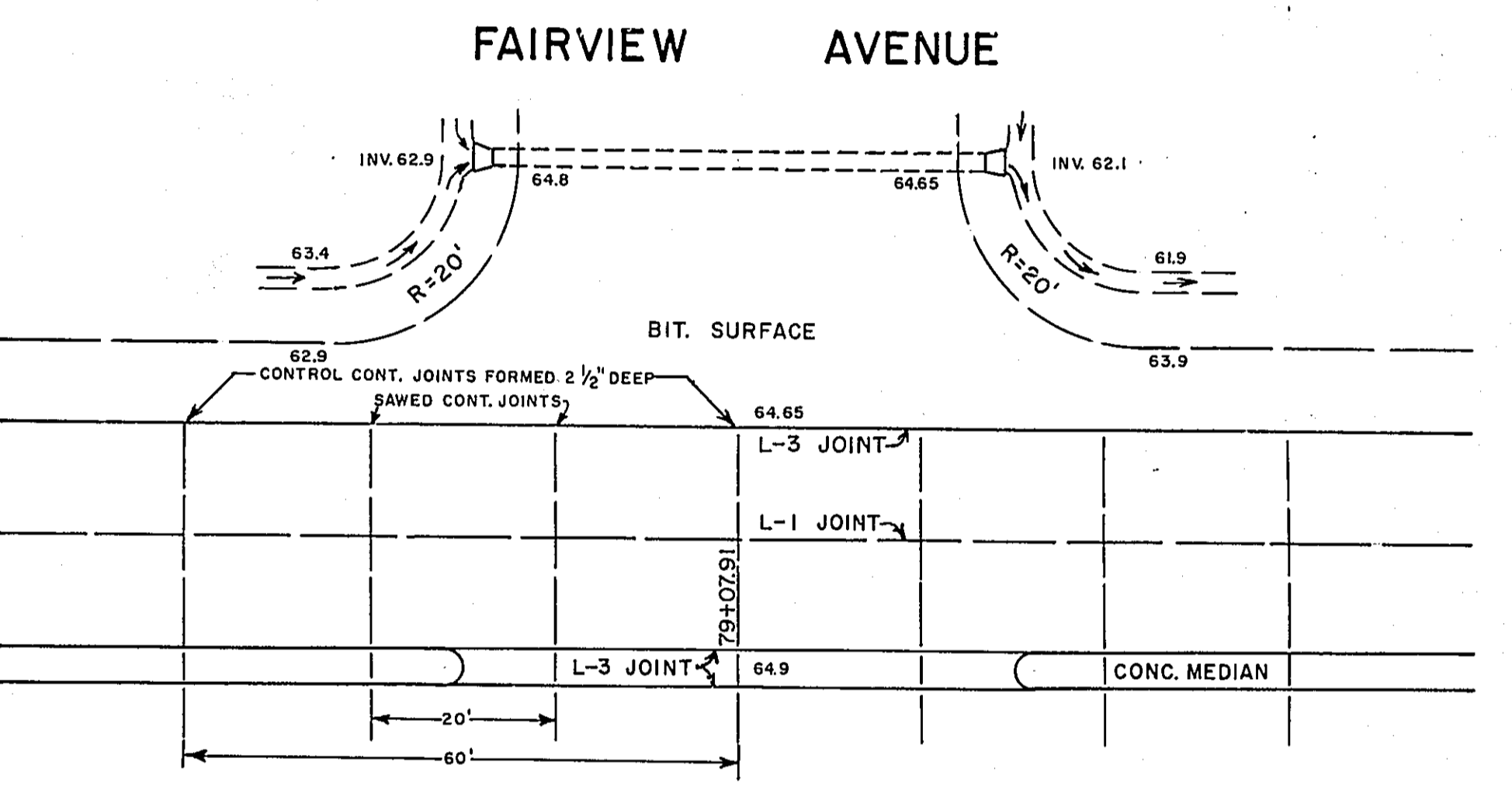
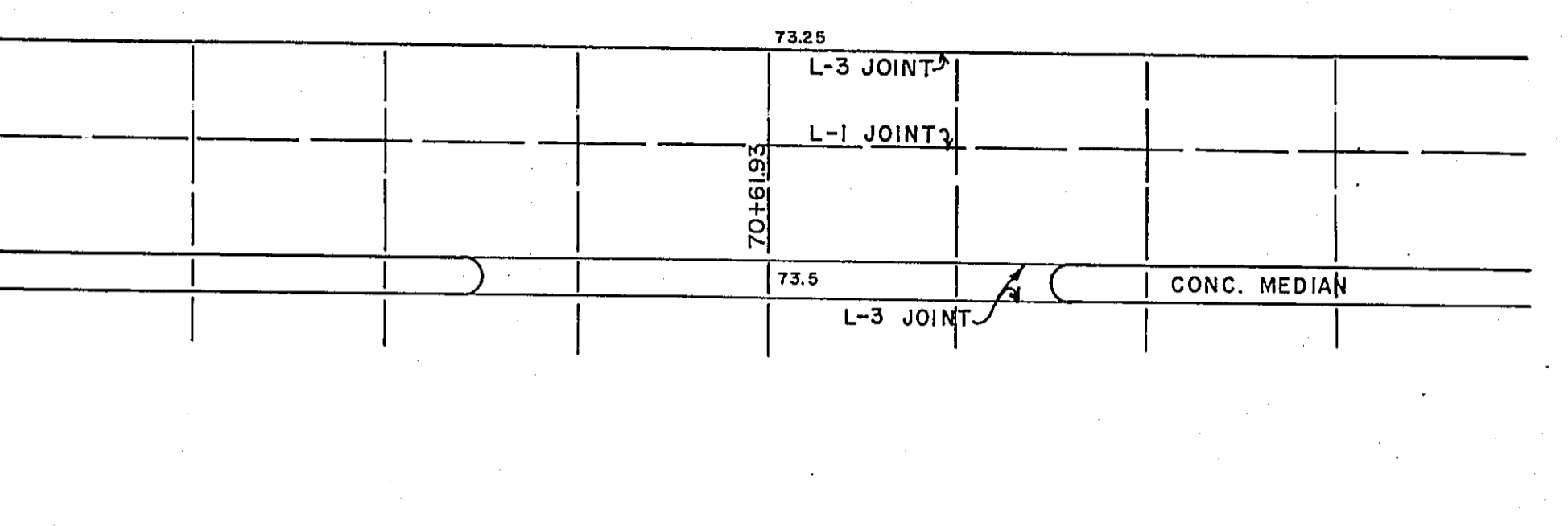
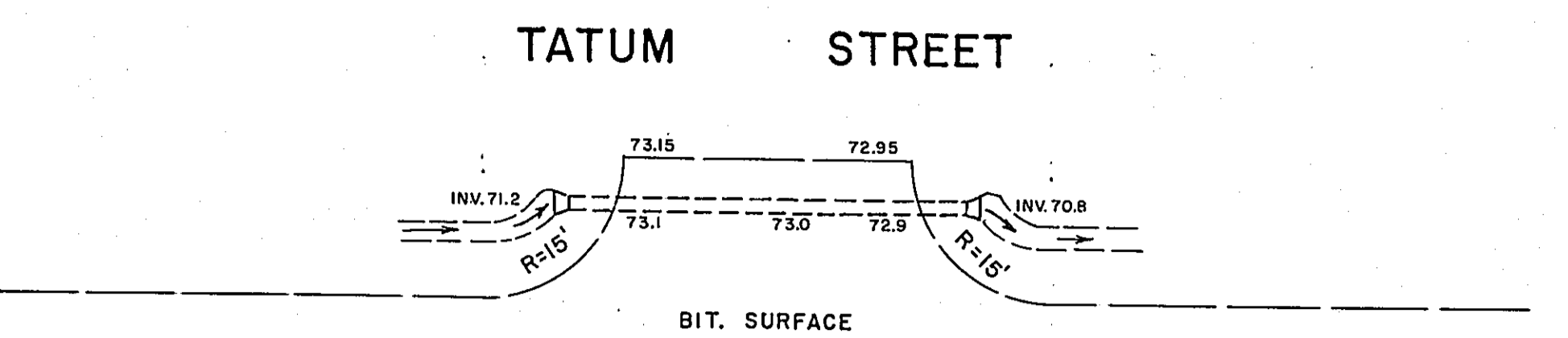
DRAINAGE STRUCTURES										F. & I. REINFORCED CONCRETE PIPE SEWER							F. & I. APRON		SOD.		
STATION	LOCATION	NO.	TYPE	DESIGN	CONST. HEIGHT LIN. FT.	F. & I. CASTING ASSEMBLY	ELEVATION		ADJUST CASTING ASSEMBLY	RECONSTRUCT M.H. OR C.B. LIN. FT.	LINEAR FEET							TO STRUCT. NO.	F. & I. APRON	SOD.	
							GRATE OR RING	OUTLET			12"	15"	18"	24"	27"	36"	42"				
52+68	LT. 15'	1	M.H.			INP.															
53+99	RT. 17'	2	M.H.			INP.			N.S.P. CO.												
58+58	RT. 17'	3	M.H.			INP.			N.S.P. CO.												
62+35	LT. 29'	4	M.H.			INP.															
63+17	RT. 17'	5	M.H.			INP.			N.S.P. CO.												
65+52	LT. 29.5'	6	M.H.			INP.				1.29											
67+77	RT. 17'	7	M.H.			INP.			N.S.P. CO.												
68+14	LT. 29'	8	M.H.			INP.															
70+63	LT. 27'	9	M.H.			INP.															
72+36.5	RT. 17'	10	M.H.			INP.			N.S.P. CO.												
73+47	LT. 29'	11	M.H.			INP.															
76+16	LT. 27'	12	M.H.			INP.															
76+96.5	RT. 17'	13	M.H.			INP.			N.S.P. CO.												
78+86	LT. 27'	14	M.H.			INP.				1.15											
78+84	RT. 29'	15	M.H.			INP.				1.05											
81+57	RT. 18'	16	M.H.			INP.			N.S.P. CO.												
82+49	RT. 25'	17	M.H.			INP.				1.05											
86+04	RT. 24.5'	18	M.H.			INP.				1.29											
89+58	RT. 26'	19	M.H.			INP.				1.57											
93+15	RT. 25'	20	M.H.			INP.				1.87											
93+54	LT. 29'	21	M.H.			INP.				1.62											
93+60	LT. 41'	22	M.H.	A	4.31	I	56.80	52.58				10' STUB	120'						23		
94+43	RT. 41'	23	M.H.	A	4.39	I	56.40	52.10				12' STUB	282'							32	
96+68	RT. 25'	24	M.H.			INP.															
96+68	LT. 29'	25	M.H.			INP.				1.64											
96+68	LT. 39'	26	M.H.			INP.															
96+52	LT. 58'	27	C.B.	H	3.97	I *	55.50	52.20				30'								28	
96+82.5	LT. 58'	28	C.B.	C	2.47	I	54.60	51.95				49'								29	
97+25	LT. 35'	29	C.B.	C	2.32	I	54.20	51.70				77'								32	
97+33	LT. 35'	30	C.B.	H	3.67	I *	54.90	51.90				6'								29	
97+25	RT. 34'	31	C.B.	H	4.42	I *	54.90	51.15												32	
97+25	RT. 278'	32	M.H.	Special	4.97	I	55.20	50.90											236'	33	
97+25	RT. 278'	33	M.H.	Special	4.91	I	54.20	49.96											235' * 14' Outlet	I	* Includes 5 Bends 7°30'
98+60	RT. 24'	34	M.H.			INP.															
100+05	LT. 39'	35	M.H.			INP.				1.89											
99+89	LT. 58'	36	C.B.	H	4.17	I *	55.70	52.20				31'								37	
100+20	LT. 58'	37	C.B.	C	2.77	I	55.00	52.05					31'							38	
100+40	LT. 34'	38	C.B.	C	2.77	I	54.90	51.95					68'							39	
100+40	RT. 34'	39	M.H.	A	3.29	I	54.90	51.70				6' STUB	316'							32	
102+40	RT. 34'	40	M.H.	A	2.99	I	55.30	52.40				200'								39	
102+40	LT. 34'	41	C.B.	C	2.12	I	55.30	53.00				68'								40	
102+56	LT. 39'	42	M.H.			INP.				2.72											
104+56	RT. 16'	43	M.H.			INP.				O.K. Leave											

- * 4 FRAME 876F & CASTING 876C & 874
- 7 FRAME CASTING 801, GRATE 810, CURB BOX 821 B
- 2 COAL RING & COVER (SEE DETAIL-SHEET 6)
- 2 RING & COVER CASTING-700-7 & 712 (M.H. 22 & 25)

TYPICAL SECTIONS



PANEL LAYOUT STREET INTERSECTIONS



NOTE:
PLACE 1/2" ϕ X 10'-0" BARS 2'-0" C-C IN PAVEMENT OVER LATERAL TRENCH EXCAVATIONS. PLACE 1/2" ϕ X 8'-0" BARS 2'-0" C-C IN PAVEMENT OVER TRENCH EXCAVATIONS IN WIDENED PORTION (9' LANE)

BITUMINOUS FOR ENTRANCES:
COMMERCIAL - MINIMUM DEPTH 4" R=10'
PRIVATE - " " 2" R=5'

PLAN SURVEYED, PLOTTED, CHECKED, AND RE-CHECKED BY: [Blank]

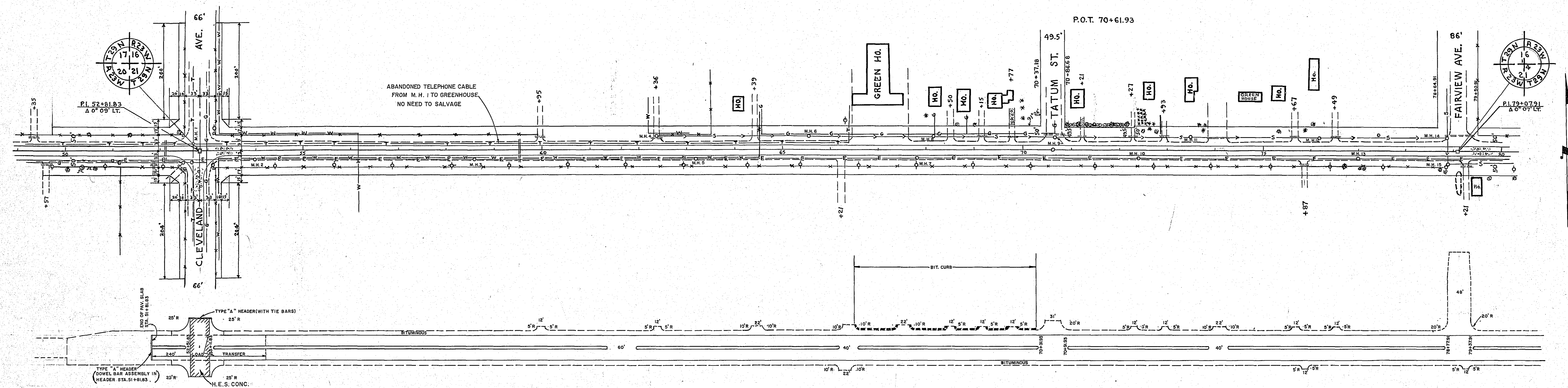
NOTE BOOK NO. [Blank] DATE [Blank]

REVISIONS: [Blank]

PROFILE SURVEYED, PLOTTED, CHECKED, AND RE-CHECKED BY: [Blank]

NOTE BOOK NO. [Blank] DATE [Blank]

REVISIONS: [Blank]



CONSTRUCTION PLAN

CLEAR 6
GRUB 8

SODDING
CLEVELAND AVE.
4 CORNERS

ENTRANCES SHALL CONFORM TO STANDARD DETAIL PLATE NO. 7035 C EXCEPT THAT "R" SHALL BE 5' FOR PRIVATE AND 10' FOR COMMERCIAL AND ALLEYS UNLESS OTHERWISE NOTED. CONCRETE ENTRANCE APRONS SHALL TERMINATE AT END OF CURB RETURN UNLESS OTHERWISE SHOWN. ALL CONCRETE DRIVEWAYS AND STREET INTERSECTIONS OUTSIDE OF CURB LINE SHALL BE 7" THICK EXCEPT CLEVELAND AVENUE WHICH SHALL BE 9" THICK. ENTRANCES MAY BE MODIFIED BY THE ENGINEER TO FIT EXISTING CONDITIONS. THE NECESSARY RE-ARRANGEMENTS OF WATER MAINS, HYDRANTS, WATER VALVES, TELEPHONE CABLES, ELECTRIC CABLES, GAS MAINS, POWER AND LIGHT POLES ARE TO BE PERFORMED BY OTHERS.

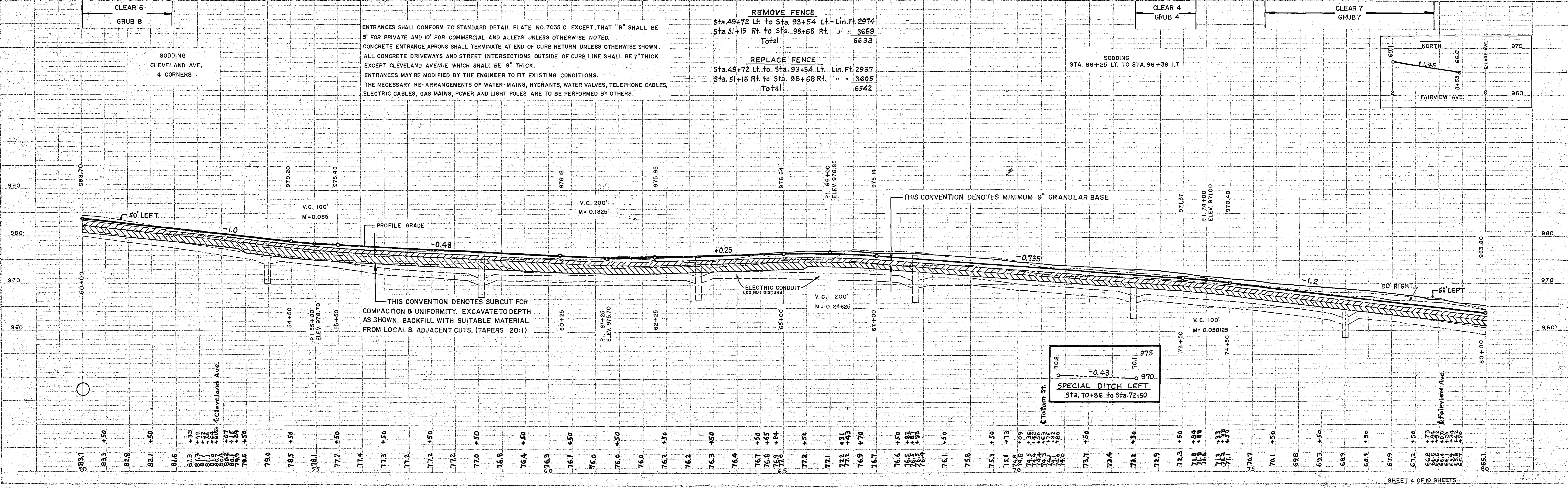
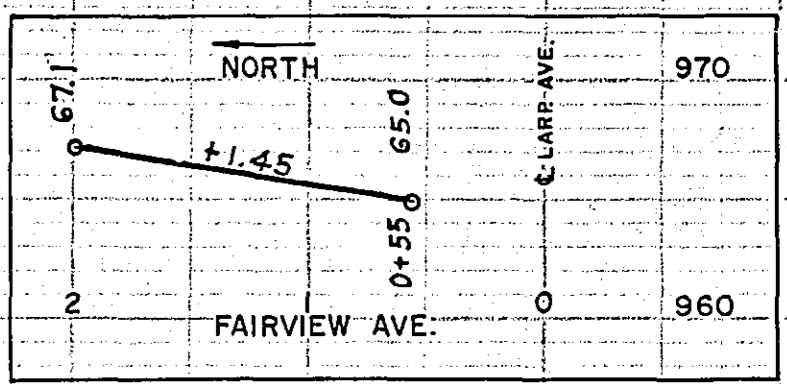
REMOVE FENCE
Sta. 49+72 Lt. to Sta. 93+54 Lt. Lin. Ft. 2974
Sta. 51+15 Rt. to Sta. 96+68 Rt. " " 3659
Total " " 6633

REPLACE FENCE
Sta. 49+72 Lt. to Sta. 93+54 Lt. Lin. Ft. 2937
Sta. 51+15 Rt. to Sta. 96+68 Rt. " " 3605
Total " " 6542

CLEAR 4
GRUB 4

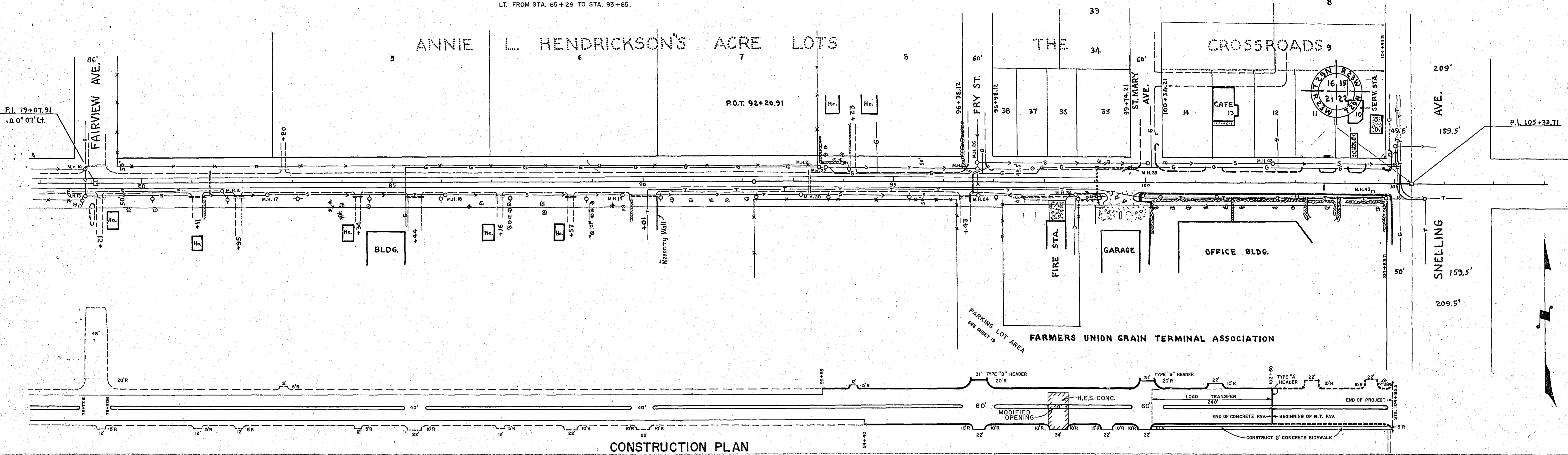
CLEAR 7
GRUB 7

SODDING
STA. 66+25 LT. TO STA. 96+38 LT

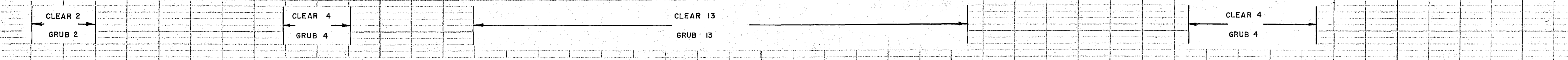


STATION 103+58
 INPLACE 8" SIGNAL PLATE. REMOVE AND RESET.
 ALSO INSTALL 8" DIRECTIONAL CALLING
 DETECTOR AS DIRECTED BY THE ENGINEER.

NOTE: GAS MAIN ON GROUND SURFACE
 LT. FROM STA. 85+29 TO STA. 93+85.



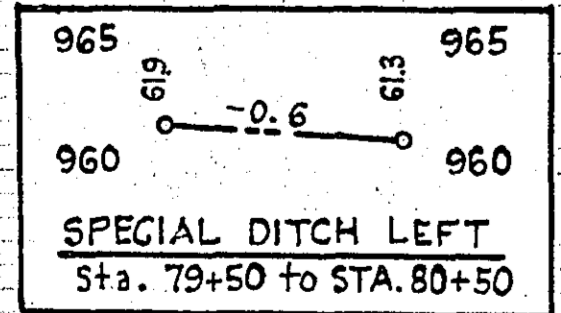
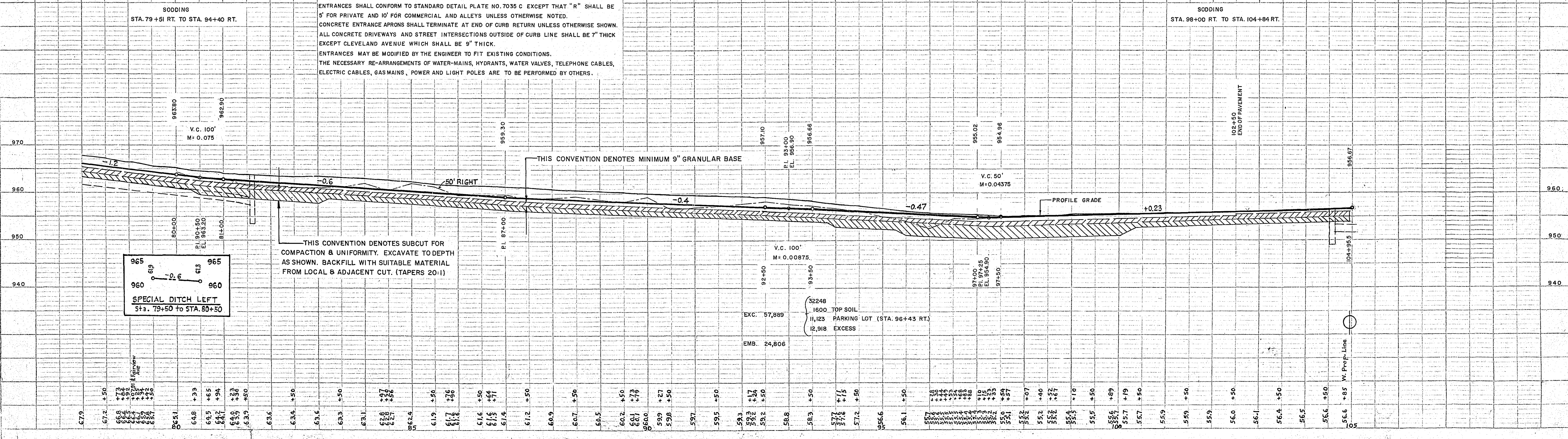
CONSTRUCTION PLAN



SODDING STA. 79+51 RT. TO STA. 94+40 RT.

ENTRANCES SHALL CONFORM TO STANDARD DETAIL PLATE NO. 7035 C EXCEPT THAT "R" SHALL BE 5' FOR PRIVATE AND 10' FOR COMMERCIAL AND ALLEYS UNLESS OTHERWISE NOTED. CONCRETE ENTRANCE APRONS SHALL TERMINATE AT END OF CURB RETURN UNLESS OTHERWISE SHOWN. ALL CONCRETE DRIVEWAYS AND STREET INTERSECTIONS OUTSIDE OF CURB LINE SHALL BE 7" THICK EXCEPT CLEVELAND AVENUE WHICH SHALL BE 9" THICK. ENTRANCES MAY BE MODIFIED BY THE ENGINEER TO FIT EXISTING CONDITIONS. THE NECESSARY RE-ARRANGEMENTS OF WATER MAINS, HYDRANTS, WATER VALVES, TELEPHONE CABLES, ELECTRIC CABLES, GAS MAINS, POWER AND LIGHT POLES ARE TO BE PERFORMED BY OTHERS.

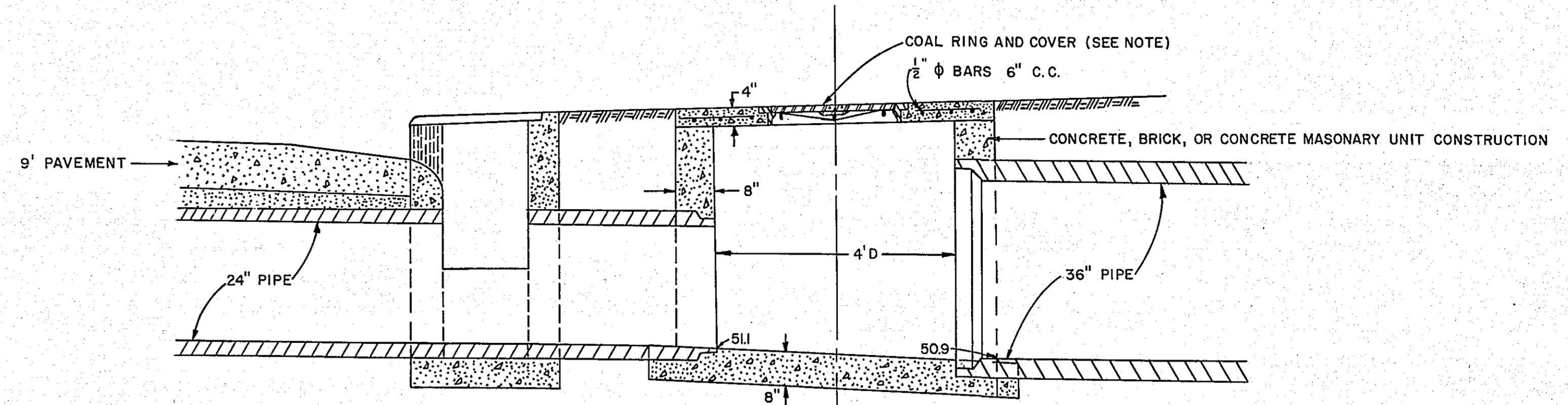
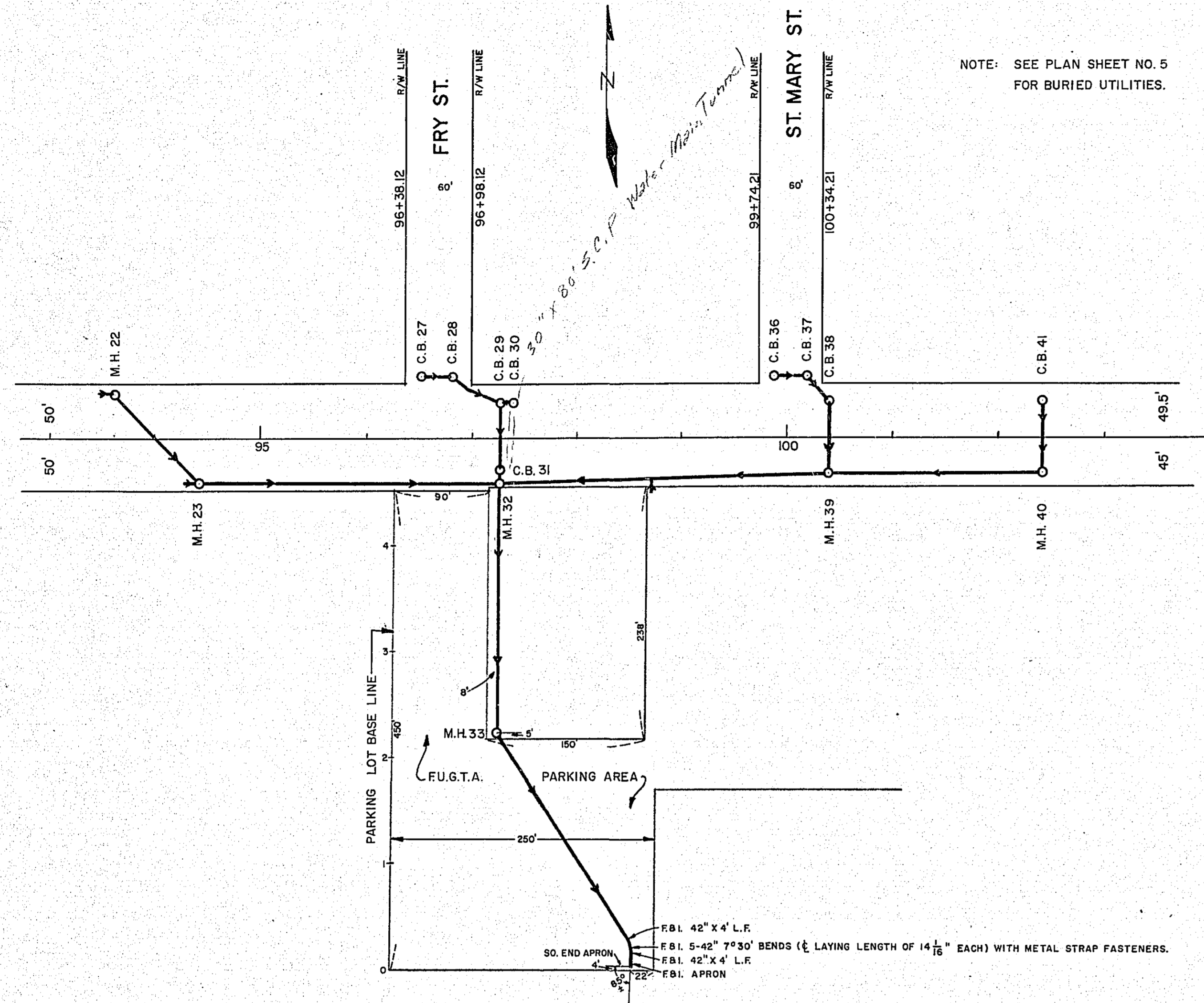
SODDING STA. 98+00 RT. TO STA. 104+84 RT.



6122

PLAN	SURVEYED	DATE
	PLOTTED	
	CHECKED	
	BY	
	NO.	

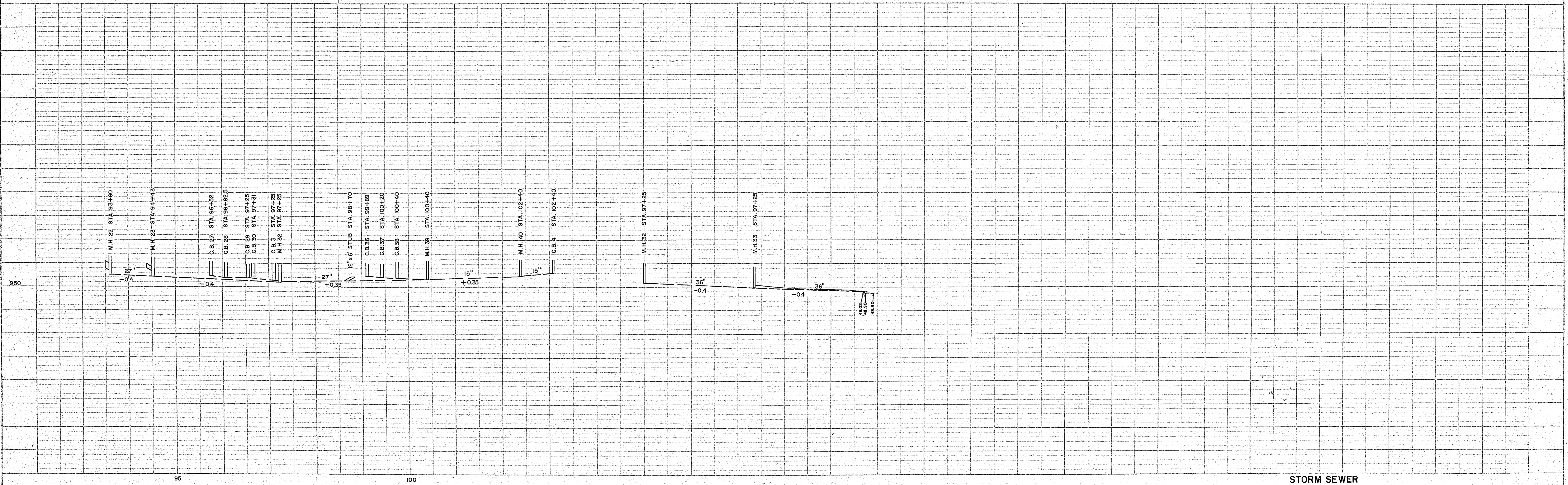
PROFILE	SURVEYED	DATE
	PLOTTED	
	CHECKED	
	BY	
	NO.	



C.B. 31
DESIGN H

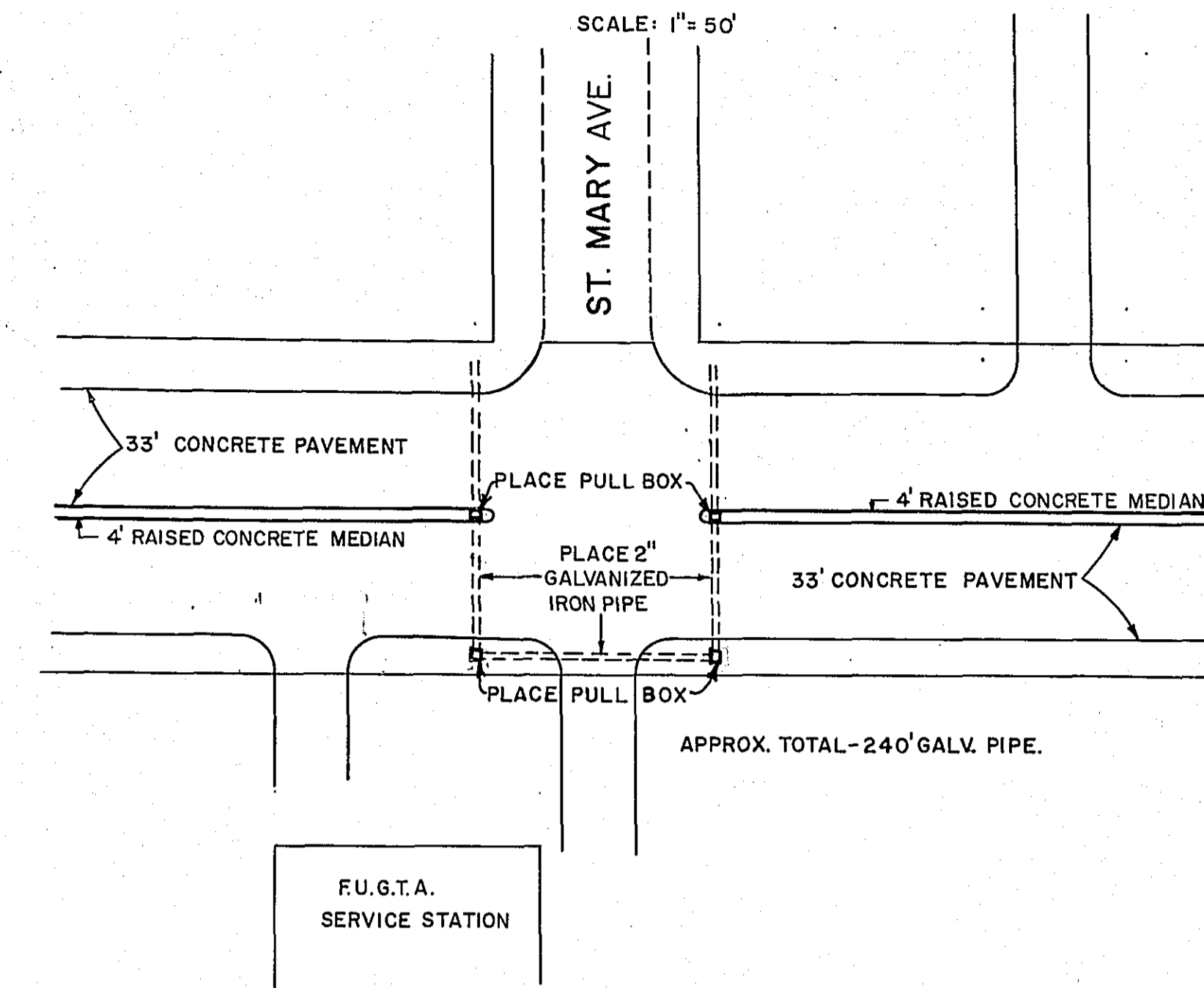
SPECIAL MANHOLE 32
(MANHOLE 33 SIMILAR)

NOTE: ST. PAUL FOUNDRY CO.
 COAL HOLE RING AND COVER
 FIGURE 21, PAGE 16B.
 CASTING A=24, B=3 1/2, C=4
 OR EQUAL



STORM SEWER
 S.A.P. 62-630-01

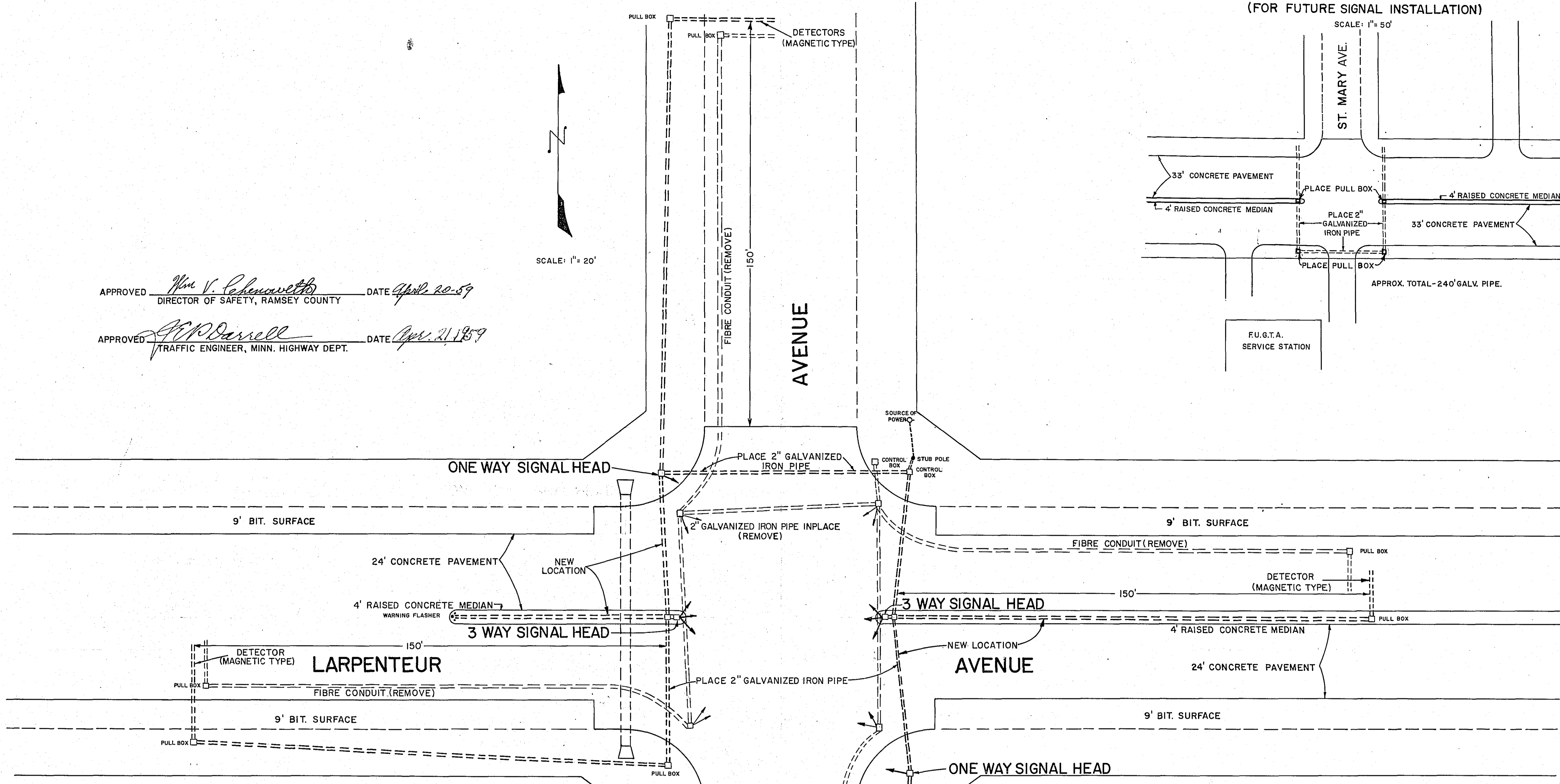
UNDERGROUND INSTALLATION
ST. MARY AVE. INTERSECTION
(FOR FUTURE SIGNAL INSTALLATION)



APPROVED *Wm. V. Colman* DATE *April 20-59*
DIRECTOR OF SAFETY, RAMSEY COUNTY

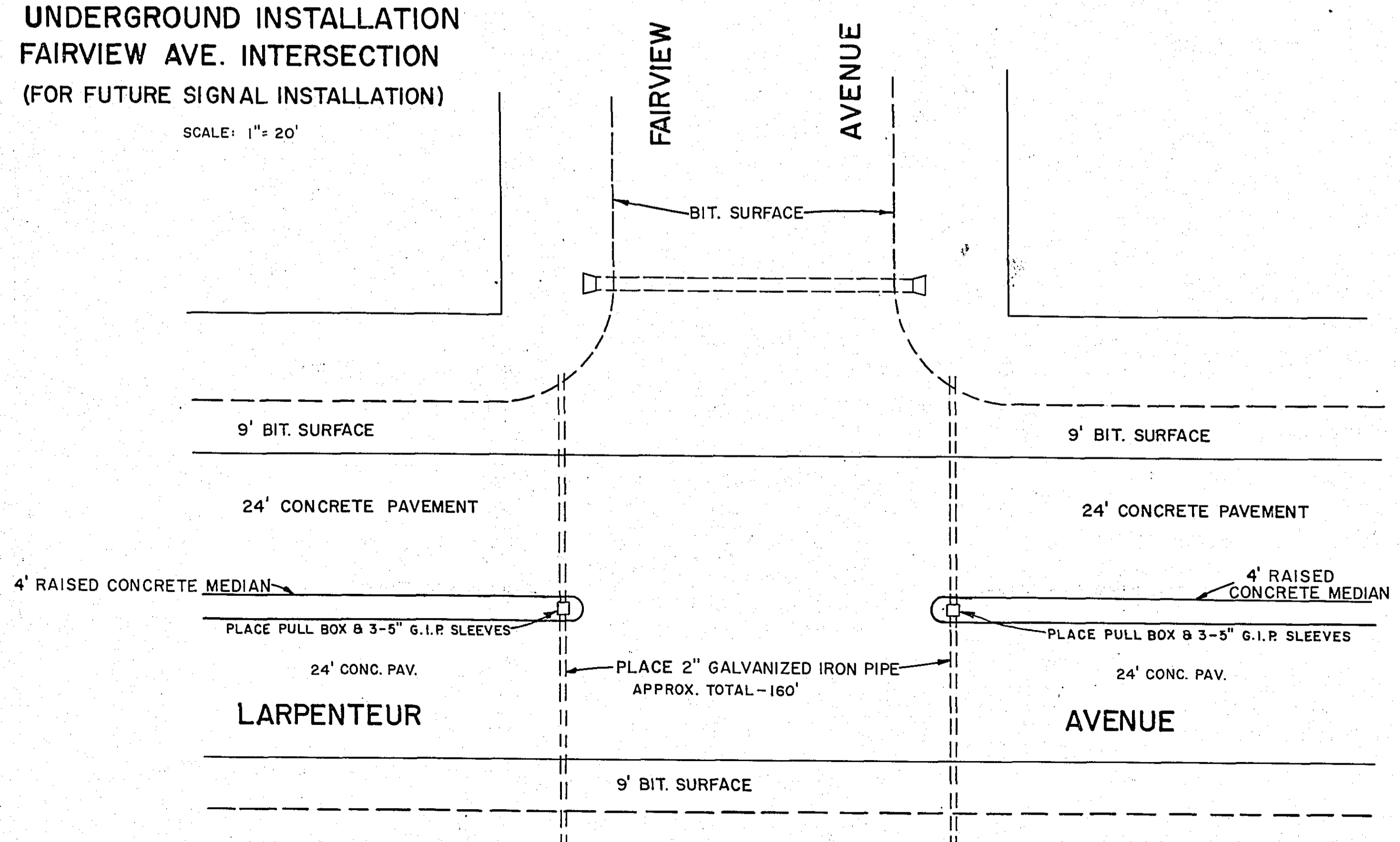
APPROVED *J.P. Darrell* DATE *April 21-59*
TRAFFIC ENGINEER, MINN. HIGHWAY DEPT.

SCALE: 1" = 20'



UNDERGROUND INSTALLATION
FAIRVIEW AVE. INTERSECTION
(FOR FUTURE SIGNAL INSTALLATION)

SCALE: 1" = 20'



NOTES:
REMOVE COMPLETE EXISTING SIGNAL SYSTEM. RELOCATE TO NEW POSITIONS ACCORDING TO THE PLANS AND SPECIFICATIONS.
DETECTOR RUNS SHALL BE PLACED IN 1" GALVANIZED PIPE CONDUIT.
ALL UNDERGROUND GALVANIZED PIPE CONDUIT SHALL BE PLACED AT A MINIMUM DEPTH OF 18".
PLACE PRECAST PULL BOX AT ALL SIGNAL LOCATIONS. PLACE TERMINAL STRIPS IN ALL PULL BOXES.
ALL LOCATIONS SHOWN ARE APPROXIMATE. EXACT LOCATIONS WILL BE DETERMINED IN THE FIELD.
UNDERGROUND FACILITIES SHALL BE INSTALLED BEFORE THE NEW PAVEMENT IS CONSTRUCTED.
PROTECT ALL SIGNAL PEDESTALS ON RAISED CONCRETE ISLAND WITH 3-4" GALVANIZED IRON PIPE GUARD POSTS. POSTS SHALL BE SET IN 5" GALVANIZED IRON PIPE SLEEVES.
PRESENT 2 WAY SIGNAL HEAD BRACKETS SHALL BE REPLACED WITH SINGLE OR TRIPLE HEAD BRACKETS AS NECESSARY.
PLACE PEDESTRIAN PUSH BUTTONS ON ALL SIGNAL PEDESTALS AND ON 4" GALVANIZED POSTS AT OPEN CORNERS.
REPLACE PRESENT VISORS WITH TUNNEL VISORS.
WARNING FLASHER TO BE INSTALLED BY CONTRACTOR ACCORDING TO SPECIAL PROVISIONS.
FAIRVIEW INTERSECTION - CONTRACTOR SHALL INSTALL 2" GALVANIZED IRON PIPE, PEDESTAL BASE, AND PULL BOX AS SHOWN.
NOTE: FOR ADDITIONAL WORK SEE SHEET 5, STA. 103+58.
AT THE FAIRVIEW AVENUE AND ST. MARY'S AVENUE THE ENDS OF ALL CONDUITS SHALL BE CAPPED.