

**OFFICE OF COUNTY ENGINEER  
RAMSEY COUNTY**  
CONSTRUCTION PLAN FOR GRADING AND SURFACING  
**LARPEUR AVENUE**  
FROM EAST COUNTY LINE TO 1817' WEST  
STA. 156+00 TO STA. 174+16.77  
S.A.P. 62-682-03 (S.A.H. 58)

GROSS LENGTH	1817	FEET	0.344	MILES
BRIDGES-LENGTH	0	FEET	0	MILES
EXCEPTIONS-LENGTH	0	FEET	0	MILES
NET LENGTH	1817	FEET	0.344	MILES

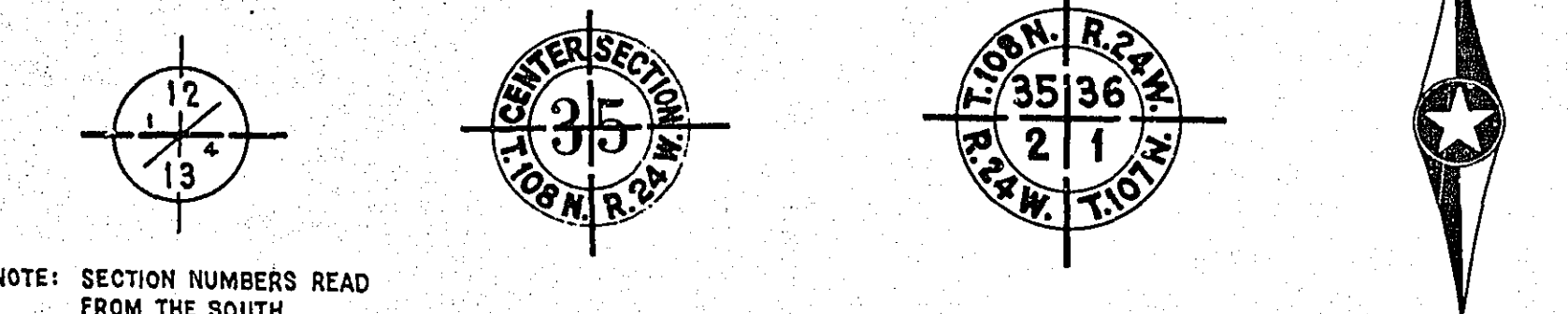
INDEX	
SHEET NO.	DESCRIPTION
1	TITLE SHEET
2	PLAN, ESTIMATE & TYPICAL SECTION
3 & 8	CROSS SECTIONS

SCALES

WORKING PLANS	PLAN, 1 inch = 100 Feet
	PROFILE, Horiz. 1 inch = 100 Feet. Vert. 1 inch = 10 Feet.
	Cross-Sections 1 inch = 10 Feet
LAYOUT, 1 inch = 2640 Feet	

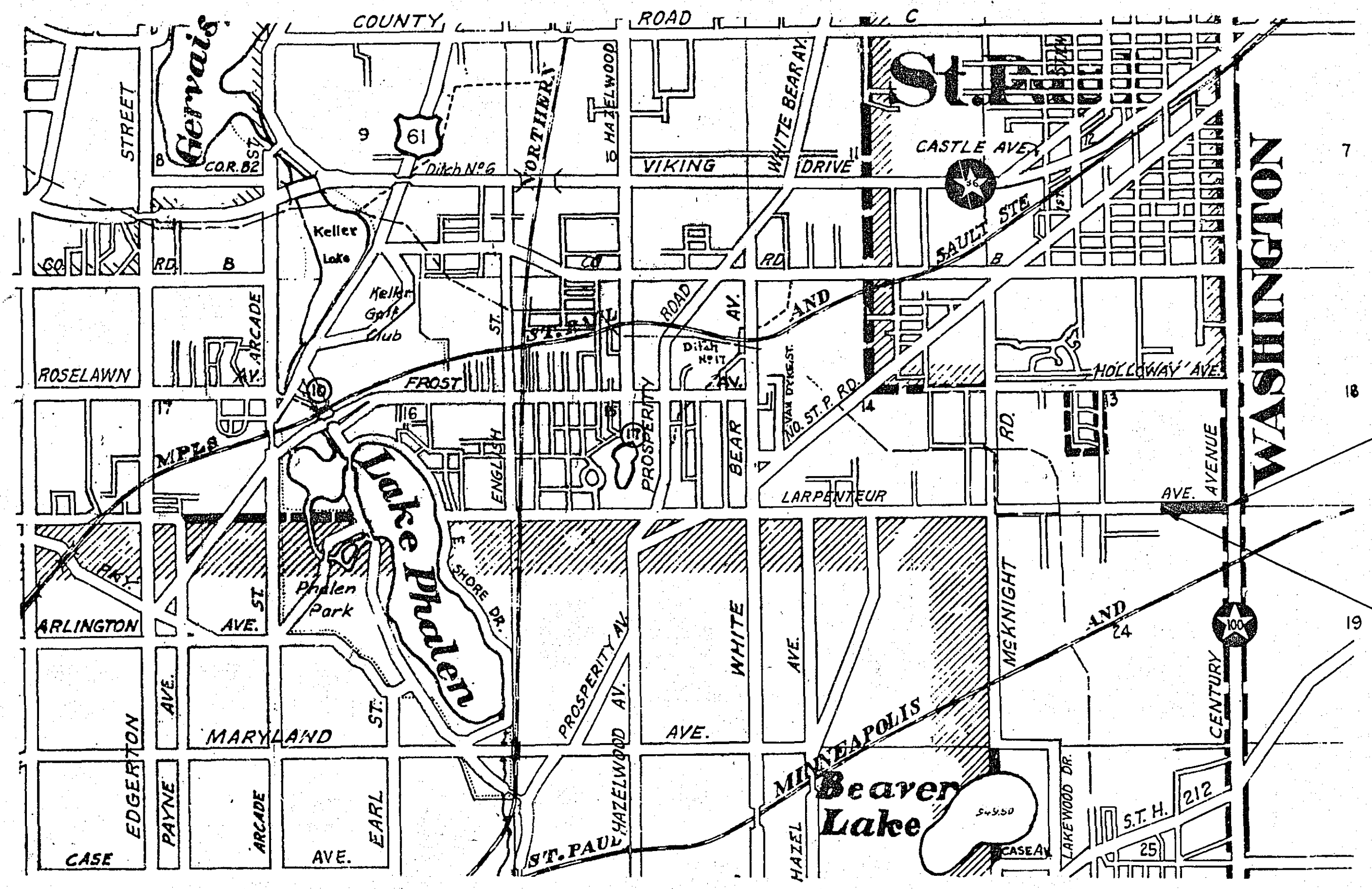
**CONVENTIONAL SIGNS**

SHALL LINE	TIMBER
COUNTY LINE	BRUSH
TOWNSHIP OR RANGE LINE	ORCHARD
SECTION LINE	ROCK LEDGE
QUARTER LINE	SAND
SIXTEENTH LINE	EDGE OF CUT
RIGHT-OF-WAY LINE	TOE OF EMBANKMENT
PRESENT ROAD 1/2" LINE	CATCH BASIN
LIMITED ACCESS	MANHOLE
PROPERTY LINE (Except Land Lines)	DROP INLET
VACATED PLATTED PROPERTY	FIRE HYDRANT
CORPORATE OR CITY LIMITS	ARC LAMP
TRUNK HIGHWAY CENTER LINE	OTHER LAMPS (Chain Nails)
RETAINING WALL	RAILROAD CROSSING SIGN
STEAM RAILROAD	RAILROAD CROSSING BELL
ELECTRIC RAILROAD	ELECTRIC WARNING SIGN
RAILROAD RIGHT-OF-WAY LINE	CROSSING GATE
CREEK	CATTLE GUARD
RAPIDS OR WATERFALL	OVERHEAD (Highway Over)
DRY RUN	UNDERPASS (Highway Under)
DRAINAGE DITCH	ABUTMENT, WALL & PIER
HIGH TENSION LINE	BRIDGE
POWER POLE LINE	CULVERT
TELEPHONE OR TELEGRAPH LINE	BUILDING (One Story Frame)
TELEPHONE CONDUIT	C-CONCRETE S-STONE T-TILE B-BRICK ST-STUCCO
GUARD RAIL	HEDGE
WIRE FENCE	IRON PIPE
RAILROAD SNOW FENCE	STONE MONUMENT
BOARD OR HIGHWAY SNOW FENCE	WOOD STAKE OR HUB
STONE WALL OR FENCE	MEANDER CORNER
GAS MAIN	
WATER PIPE	
SEWER PIPE	
DRAIN TILE	
GRAVEL PIT	
SAND PIT	
CLAY PIT	
ROCK QUARRY	
SPRINGS	
MARSH	



**PIT DATA**

COUNTY	PIT NO.	Located in
		Dead Haul



**SPECIFICATIONS**

THE "SPECIFICATIONS FOR HIGHWAY CONSTRUCTION" DATED JULY 1, 1947 AND SUBMITTED FOR APPROVAL BY THE DIVISION ENGINEER OF THE BUREAU OF PUBLIC ROADS ON OCTOBER 15, 1947, AS MODIFIED BY "SUPPLEMENT 1" THERETO DATED APRIL 15, 1953 AND SUBMITTED FOR APPROVAL BY THE DIVISION ENGINEER OF THE BUREAU OF PUBLIC ROADS ON MARCH 25, 1953, SHALL GOVERN.

I HEREBY CERTIFY THAT THIS PLAN WAS PREPARED BY ME OR UNDER MY DIRECT SUPERVISION AND THAT I AM A DULY REGISTERED PROFESSIONAL ENGINEER UNDER THE LAWS OF THE STATE OF MINNESOTA.

*Robert D. Brown* COUNTY ENGINEER REG. NO. 718 DATE

RECOMMENDED FOR APPROVAL *Robert D. Brown* COUNTY ENGINEER DATE 7/21/58

APPROVED *H. T. Grodum* VICE CHAIRMAN OF RAMSEY COUNTY BOARD DATE 7/21/58

MINNESOTA STATE HIGHWAY DEPARTMENT

RECOMMENDED FOR APPROVAL *Wm. L. Ladd* DISTRICT ENGINEER DATE 7/30/58

APPROVED *Wm. L. Ladd* STATE AID ENGINEER DATE 8/1/58

RECORDED - FILED

PLAN	SURVEYED BY	DATE
	NOTED BY	
	CHECKED BY	
	EST. BY	
	DATE	

PROFILE	SURVEYED BY	DATE
	NOTED BY	
	CHECKED BY	
	EST. BY	
	DATE	

Sta. 156+67 Lt. 35' to Sta. 157+70 Lt. 34'  
Inp. 24"x 102" S.C.P. Including 2 Aprons.  
O.K. Leave

Sta. 160+79 Rt. 25'  
Inp. 15"x 28" C.M.  
Remove (No Culv. Req'd)

Sta. 162+67 &  
Inp. 18"x 80" C.M.  
O.K. Leave

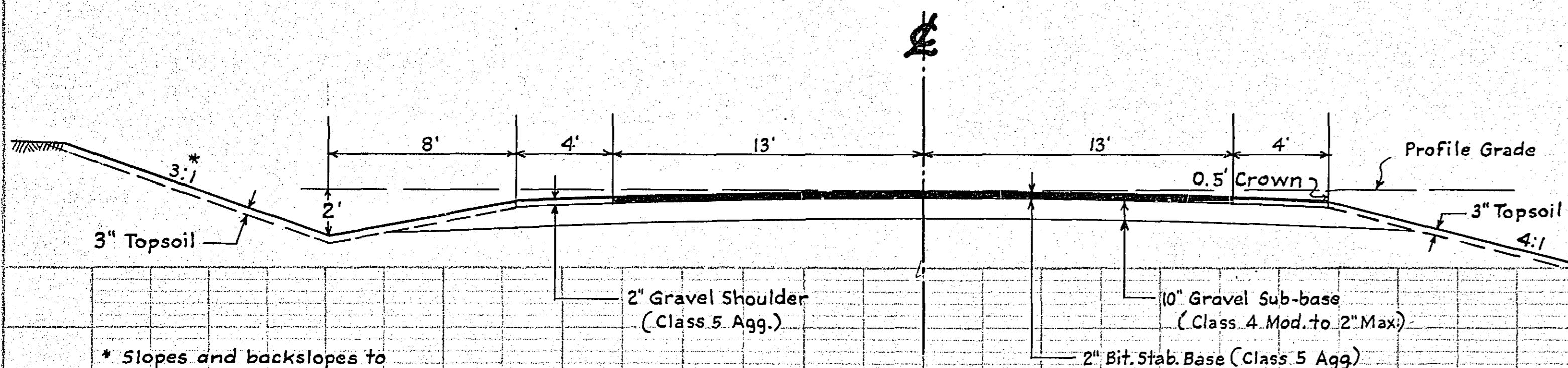
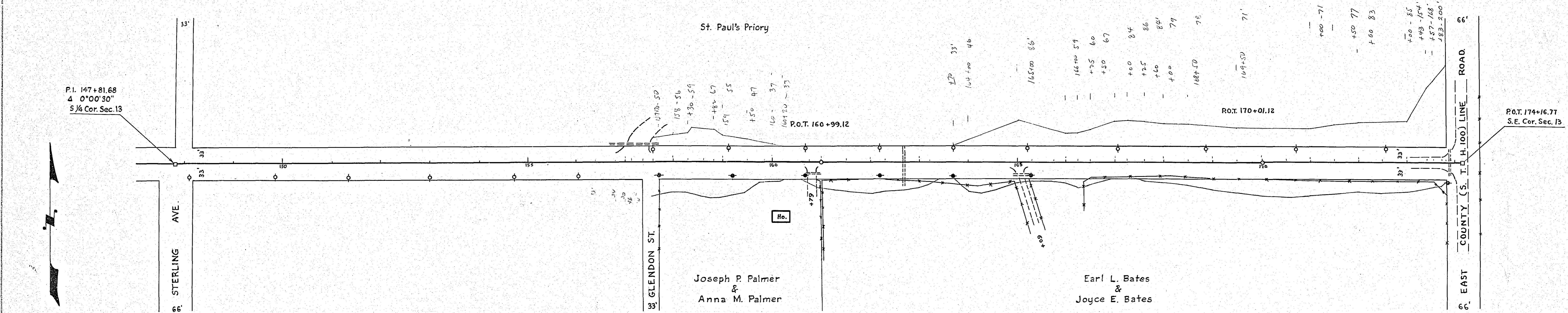
Sta. 165+09 Rt. 23'  
Inp. 12"x 28" C.M.  
Remove  
F.&I. 15"x 20" C.M.

Sta. 162+62 &  
F.&I. 24"x 76" C.M.  
F.&I. 1 Apron Lt.

Sodding At Culvert Ends  
15 Sq. Yds.

Sta. 173+89 &  
Inp. 15"x 54" C.M.  
Remove

Sta. 173+83 &  
F.&I. 15"x 56" C.M.



TYPICAL SECTION

ESTIMATED QUANTITIES		
DESCRIPTION	UNIT	TOTAL ESTIMATED QUANTITIES
REMOVE FENCE	L.F.	1175
CLASS 'A' EXCAVATION	C.Y.	35,888
BITUMINOUS MATERIAL FOR MIXTURE MC-20R3 (INCLUDES SEAL COAT)	GAL.	7885
GRAVEL CLASS 4 (MOD. 100% PASSING 2") FOR 10" SUB-BASE	TON	3314
GRAVEL CLASS 5 FOR 2" SURFACE	TON	553
REMOVE 15" C.M.	L.F.	110
F.&I. 15" C.M.	L.F.	76
F.&I. 24" C.M.	L.F.	86
F.&I. 24" METAL APRON	APRON	1
REPLACE FENCE	L.F.	1175
ROADSIDE SEEDING	ACRE	3.5

