

OFFICE OF COUNTY ENGINEER
RAMSEY COUNTY
 CONSTRUCTION PLAN FOR GRADING AND SURFACING
McMENEMY STREET
 FROM COUNTY ROAD "F" TO COUNTY ROAD "G" (T.H.96)
 STA. 0+00 TO STA. 52+40
 S.A.P. 62-674-01 (C.S.A.H. 57)

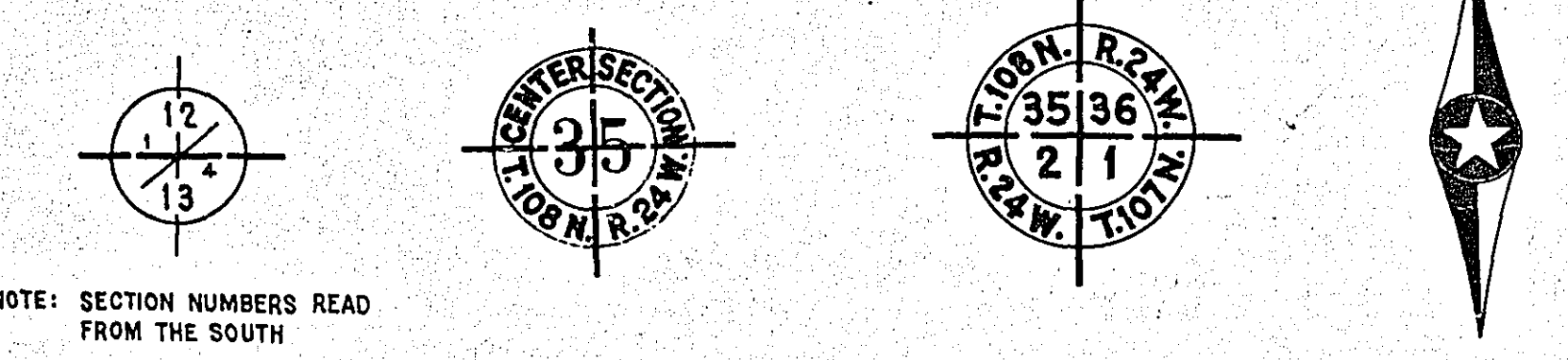
GROSS LENGTH 5240 FEET 0.99 MILES
 BRIDGES-LENGTH 0 FEET 0 MILES
 EXCEPTIONS-LENGTH 0 FEET 0 MILES
 NET LENGTH 5240 FEET 0.99 MILES

SHEET NO.	DESCRIPTION
1	TITLE SHEET
2	ESTIMATE & TYPICAL SECTIONS
3&4	PLAN SHEETS
5-14	CROSS SECTIONS

PLAN, 1 inch = 100 Feet
 PROFILE, Horiz. 1 inch = 100 Feet. Vert. 1 inch = 10 Feet.
 WORKING PLANS { Horiz. 1 inch = 100 Feet
 Vert. 1 inch = 10 Feet
 Cross-Sections 1 inch = 10 Feet
 LAYOUT, 1 inch = 2640 Feet

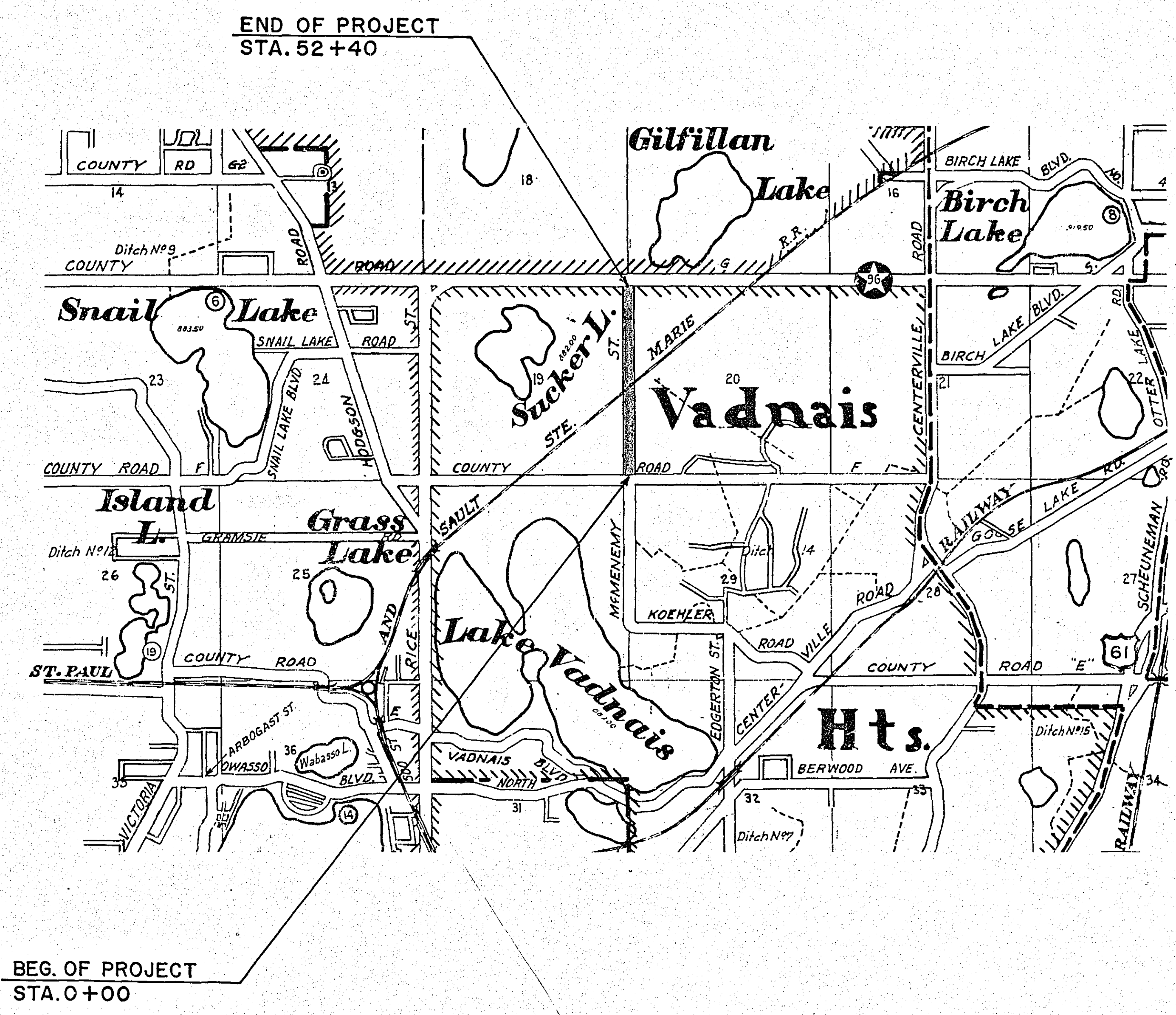
CONVENTIONAL SIGNS

STATE LINE	TIMBER
COUNTY LINE	BRUSH
TOWNSHIP OR RANGE LINE	ORCHARD
SECTION LINE	ROCK LEDGE
QUARTER LINE	SAND
SIXTEENTH LINE	EDGE OF CUT
RIGHT-OF-WAY LINE	TOE OF EMBANKMENT
PRESENT ROAD "A" LINE	CATCH BASIN
LIMITED ACCESS	MANHOLE
PROPERTY LINE (Except Land Lines)	DROP INLET
VACATED PLATTED PROPERTY	FIRE HYDRANT
CORPORATE OR CITY LIMITS	ARC LAMP
TRUNK HIGHWAY CENTER LINE	OTHER LAMPS (State Kind)
RETAINING WALL	RAILROAD CROSSING SIGN
STEAM RAILROAD	RAILROAD CROSSING BELL
ELECTRIC RAILROAD	ELECTRIC WARNING SIGN
RAILROAD RIGHT-OF-WAY LINE	CROSSING GATE
CREEK	CATTLE GUARD
RAPIDS OR WATERFALL	OVERHEAD (Highway Over)
DRY RUN	UNDERPASS (Highway Under)
DRAINAGE DITCH	ABUTMENT, WALL & PIER
HIGH TENSION LINE	BRIDGE
POWER POLE LINE	CULVERT
TELEPHONE OR TELEGRAPH LINE	BUILDING (One Story Frame)
TELEPHONE CONDUIT	C-CONCRETE S-STONE T-TILE B-BRICK ST-STUCCO
GUARD RAIL	HEDGE
WIRE FENCE	IRON PIPE
RAILROAD SNOW FENCE	STONE MONUMENT
BOARD OR HIGHWAY SNOW FENCE	WOOD STAKE OR HUB
STONE WALL OR FENCE	MEANDER CORNER
GAS MAIN	
WATER PIPE	
SEWER PIPE	
DRAIN TILE	
GRAVEL PIT	
SAND PIT	
CLAY PIT	
ROCK QUARRY	
SPRINGS	
MARSH	



PIT DATA

COUNTY PIT NO.	Located in
	Dead Haul
PIT NO.	Located in
	Dead Haul
PIT NO.	Located in
	Dead Haul
PIT NO.	Located in
	Dead Haul



SPECIFICATIONS

THE "SPECIFICATIONS FOR HIGHWAY CONSTRUCTION" DATED JULY 1, 1947 AND SUBMITTED FOR APPROVAL BY THE DIVISION ENGINEER OF THE BUREAU OF PUBLIC ROADS ON OCTOBER 15, 1947, AS MODIFIED BY "SUPPLEMENT 1" THERETO DATED APRIL 15, 1953 AND SUBMITTED FOR APPROVAL BY THE DIVISION ENGINEER OF THE BUREAU OF PUBLIC ROADS ON MARCH 25, 1953, SHALL GOVERN.

I HEREBY CERTIFY THAT THIS PLAN WAS PREPARED BY ME OR UNDER MY DIRECT SUPERVISION AND THAT I AM A DULY REGISTERED PROFESSIONAL ENGINEER UNDER THE LAWS OF THE STATE OF MINNESOTA.

Barry S. Brown COUNTY ENGINEER REG. NO. 818 DATE 6/5/58

RECOMMENDED FOR APPROVAL *Barry S. Brown* COUNTY ENGINEER DATE 6/5/58

APPROVED *Joseph L. Nelson* CHAIRMAN OF RAMSEY COUNTY BOARD DATE 6/16/58

MINNESOTA STATE HIGHWAY DEPARTMENT

RECOMMENDED FOR APPROVAL *W. M. Ladden* DISTRICT ENGINEER DATE 6/19/58

APPROVED *W. M. Ladden* STATE AID ENGINEER DATE 6/19/58

MICRO-FILMED

ESTIMATED QUANTITIES

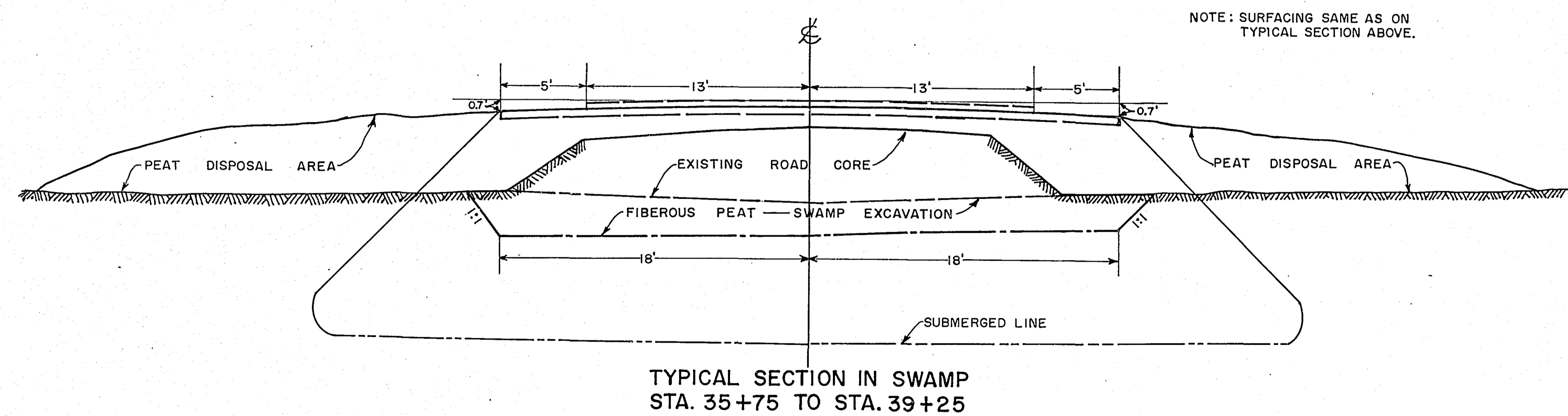
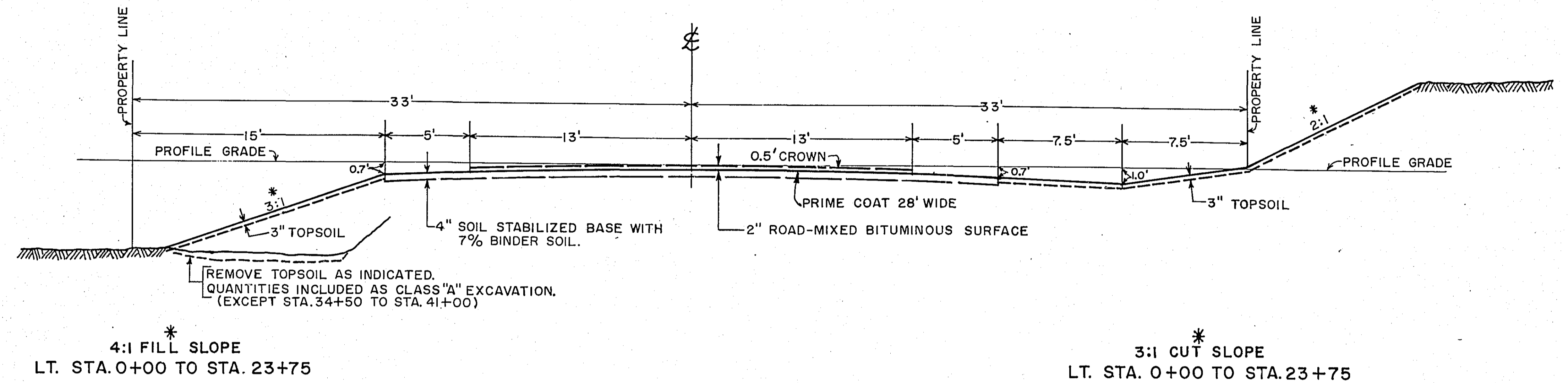
SPECIFICATION NO.	ITEM	UNIT	TOTAL ESTIMATED QUANTITIES
2101.502	CLEARING	TREE	4
2101.507	GRUBBING	TREE	67
2104.510	REMOVE FENCE	LINEAR FOOT	4,271
2105.501	CLASS "A" EXCAVATION	CUBIC YARD	25,365
2117.503	BINDER SOIL IN PLACE	CUBIC YARD	161
2117.504	STABILIZING	SQUARE YARD	20,900
2123.506	DRAGLINE (SPEC. SWAMP EXCAV. INCLUDES OLD ROAD CORE)	HOUR	110
2123.509	DOZER (LEVELING SWAMP EXCAV.)	HOUR	24
2130.501	WATER	(M.) GALLON	52
2501.511-18	F. & I. C.M. PIPE CULVERT 18"	LINEAR FOOT	88
2501.511-24	F. & I. C.M. PIPE CULVERT 24"	LINEAR FOOT	58
2515.531-18	F. & I. METAL APRON FOR C.M. PIPE (18")	APRON	2
2574.501	ROADSIDE SEEDING (CLASS 2)	ACRE	5.5
2576.501	AREA SODDING	SQUARE YARD	13
104.510	REPLACE FENCE	LINEAR FOOT	4,271
2321.501	BITUMINOUS MATERIAL FOR PRIME COAT	GALLON	3,251
2321.503	BITUMINOUS MATERIAL FOR MIXTURE-MC2-MC3	GALLON	22,641
2321.507	AGGREGATE (VEHICULAR MEASURE)	CUBIC YARD	10.00

BASIS FOR PLANNED QUANTITIES

BITUMINOUS MATERIAL FOR STABILIZED BASE ——— 1 1/2 GALLONS PER SQUARE YARD
 WATER FOR COMPACTION ——— 2 1/2 GALLONS PER SQUARE YARD
 BITUMINOUS MATERIAL FOR PRIME COAT ——— 0.2 GALLONS PER SQUARE YARD
 ROADSIDE SEEDING (CLASS 2) ——— 120 POUNDS PER ACRE

PLATE NO.	STANDARD DETAIL PLATES
3123A	METAL APRON FOR C.M. PIPES
9102A	SODDING AT PIPE CULVERT ENDS

TYPICAL SECTIONS

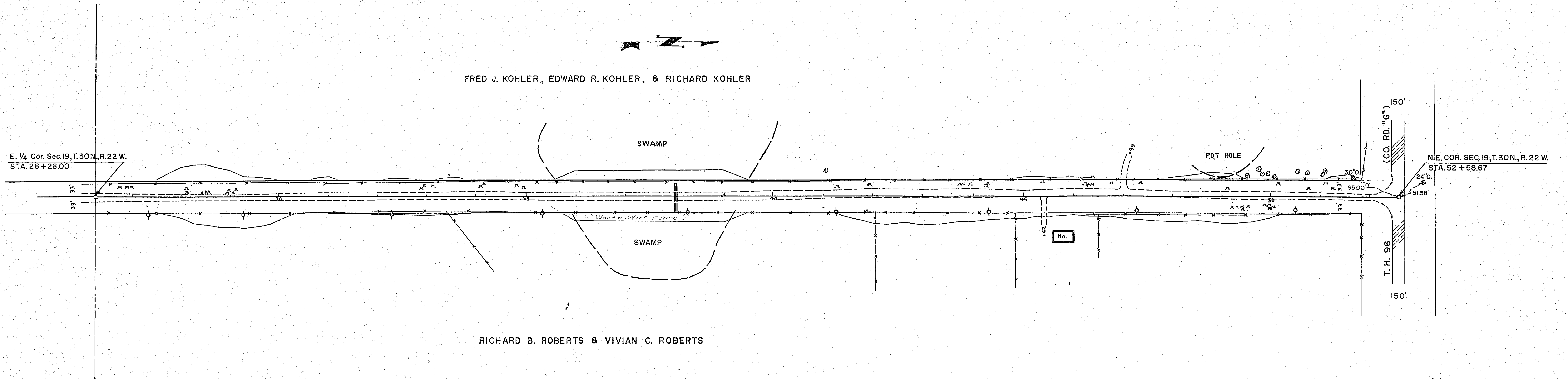


S.A.P. 62-674-01

6110

STA. 38+00 ±
F. & I. 24" X 58' C.M. PIPE

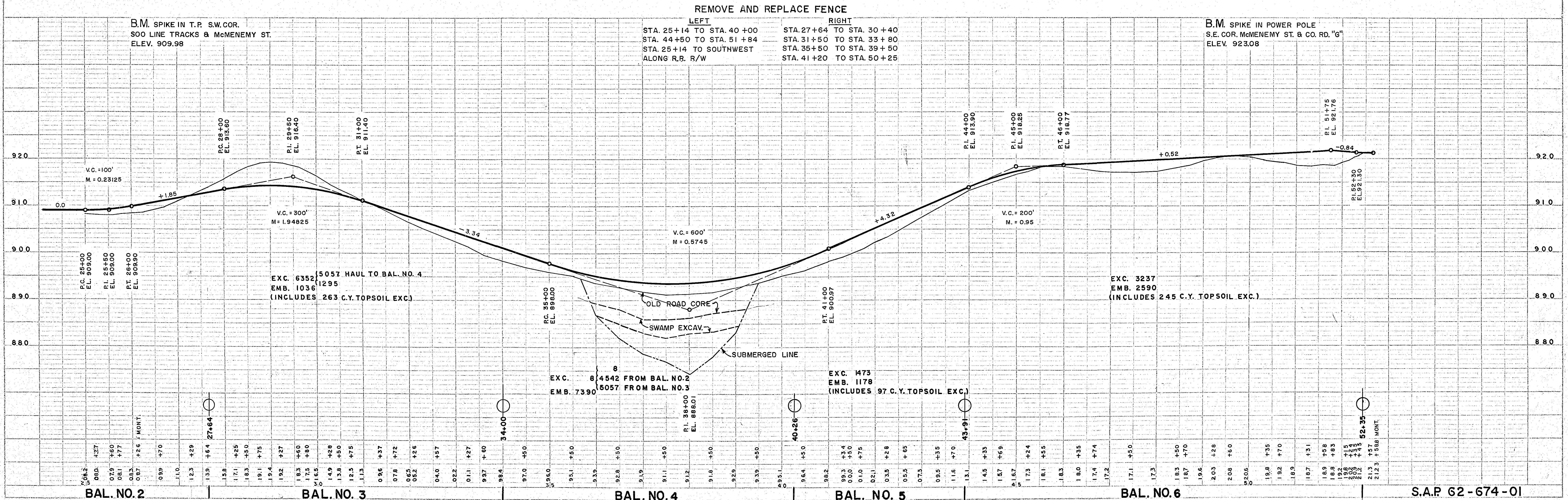
FRED J. KOHLER, EDWARD R. KOHLER, & RICHARD KOHLER



RICHARD B. ROBERTS & VIVIAN C. ROBERTS

DATE	
BY	
REVISIONS	
NO.	DESCRIPTION
1	PLANTING
2	ALIGNED CHECKED
3	BY
4	DATE
5	BY
6	DATE
7	BY
8	DATE
9	BY
10	DATE

DATE	
BY	
REVISIONS	
NO.	DESCRIPTION
1	PROFILE
2	PLANTING
3	ALIGNED CHECKED
4	BY
5	DATE
6	BY
7	DATE
8	BY
9	DATE
10	BY



BAL. NO. 2

BAL. NO. 3

BAL. NO. 4

BAL. NO. 5

BAL. NO. 6

S.A.P. 62-674-01

PLATE 1 - PLAN - PROFILE
 DRAWN BY: [Name]
 CHECKED BY: [Name]
 DATE: [Date]

RAMSEY COUNTY PROJECT 58-57 SHEET 4 OF 14 SHEETS

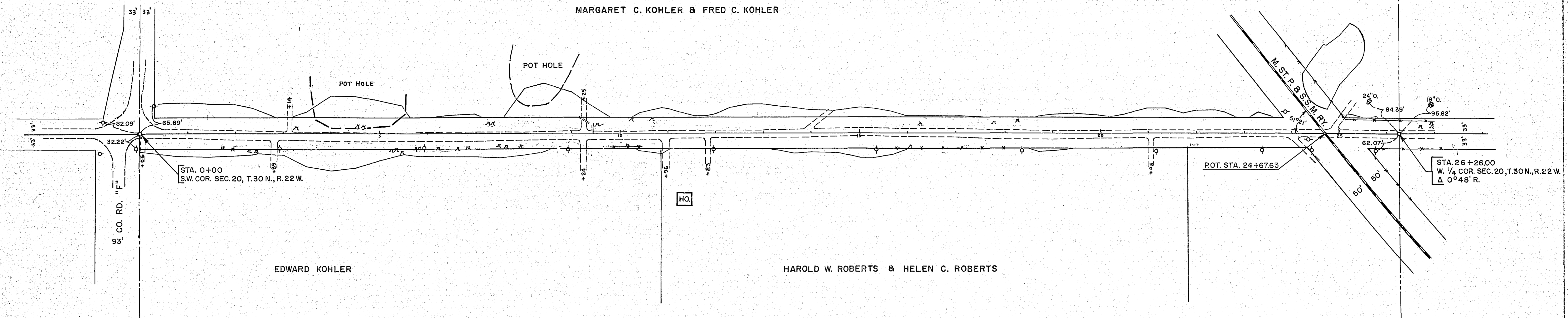
McHenry St. 6110

STA. 8+50 ±
F. & I. 18" X 88' C.M. PIPE
F. & I. 2 METAL APRONS

STA. 9+25 LT. 26°
INP. 12" X 20' C.M. PIPE
REMOVE

STA. 9+41
INP. 12" VIT. PIPE
BURIED-O.K. LEAVE

MARGARET C. KOHLER & FRED C. KOHLER



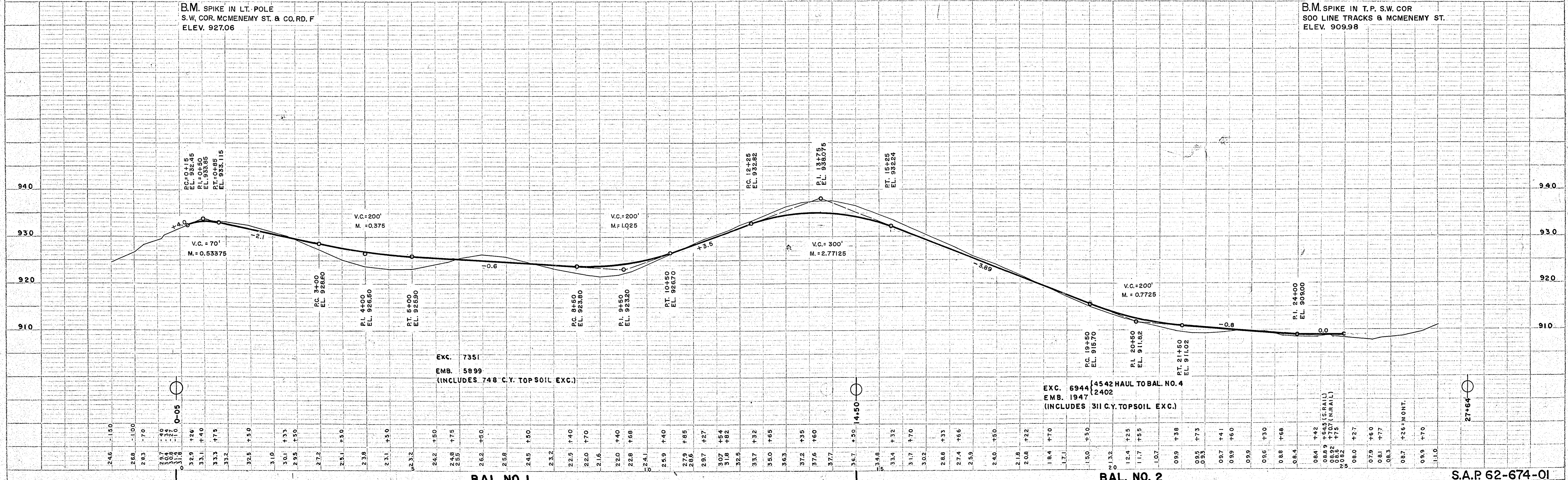
EDWARD KOHLER

HAROLD W. ROBERTS & HELEN C. ROBERTS

PLAN
SURVEYED BY
PLOTTED BY
NOTE BOOK ALIGNMENT CHECKED
NO. OF WAY CHECKED
NO.

B.M. SPIKE IN LT. POLE
S.W. COR. MCMENEMY ST. & CO. RD. F
ELEV. 927.06

B.M. SPIKE IN T.P. S.W. COR
SOO LINE TRACKS & MCMENEMY ST.
ELEV. 909.98



EXC. 7351
EMB. 5899
(INCLUDES 748 C.Y. TOP SOIL EXC.)

EXC. 6944
EMB. 1947
(INCLUDES 311 C.Y. TOP SOIL EXC.)

BAL. NO. 1

BAL. NO. 2

S.A.P. 62-674-01

RAMSEY COUNTY PROJECT 58-57

SHEET 3 OF 14 SHEETS

PLATE 1 - PLAN-PROFILE (S.P.A. & R.E. STANDARD)
REDFIELD & ROSS CO., NEW YORK
K & E CO. No. 348-HCA