

STATE OF MINNESOTA  
DEPARTMENT OF HIGHWAYS  
CONSTRUCTION PLAN FOR  
**COUNTY HIGHWAY NO. 18**  
HIGHWAY - RAILROAD GRADE CROSSING  
SIGNAL SYSTEM  
1/2 MILE N. OF ST. PAUL  
MINNESOTA F.A.G.S. NO. 56-A(1), SECTION

FED. ROAD DIST. NO. 4	STATE MINN.	F.A.G.S. 56-A(1)	SHEET NO. 1	TOTAL SHEETS 7
-----------------------	-------------	------------------	-------------	----------------

HIGHWAY CROSSING SIGNALS F.A.G.S. 56-A(1)

CONVENTIONAL SIGNS & ABBREVIATIONS	
STATE LINE	TIMBER
COUNTY LINE	BRUSH
TOWNSHIP OR RANGE LINE	ORCHARD
SECTION LINE	ROCK LEDGE
QUARTER LINE	SAND
SIXTEENTH LINE	EDGE OF CUT
RIGHT-OF-WAY LINE	TOE OF EMBANKMENT
PROPERTY LINE (Except Land Lines)	CATCH BASIN
VACATED PLATTED PROPERTY	MANHOLE
CORPORATE OR CITY LIMITS	FIRE HYDRANT
TRUNK HIGHWAY CENTER LINE	ARC LAMP
RETAINING WALL	OTHER LAMPS (State Kind)
STEAM RAILROAD	RAILROAD CROSSING SIGN
ELECTRIC RAILROAD	RAILROAD CROSSING BELL
RAILROAD RIGHT-OF-WAY LINE	ELECTRIC WARNING SIGN
CREEK	CROSSING GATE
RAPIDS OR WATERFALL	CATTLE GUARD
DRY RUN	OVERHEAD (Highway Over)
DRAINAGE DITCH	UNDERPASS (Highway Under)
HIGH TENSION LINE	ABUTMENT WALL & PIER
POWER POLE LINE	GIRDER BRIDGE
TELEPHONE OR TELEGRAPH LINE	TRUSS
CULVERTS - PLAIN	TRESTLE
WITH ENDWALLS	BUILDING (One Story Frame)
WITH WINGWALLS	F-FRAME C-CONCRETE
DROP INLET	S-STONE T-TILE
GUARD RAIL	B-BRICK ST-STUCCO
WIRE FENCE	IRON PIPE
RAILROAD SNOW FENCE	STONE MONUMENT
BOARD OR HIGHWAY SNOW FENCE	WOOD STAKE OR HUB
STONE WALL OR FENCE	MEANDER CORNER
HEDGE	
WATER PIPE	
SEWER PIPE	
DRAIN TILE	
GRAVEL PIT	
SAND PIT	
CLAY PIT	
ROCK QUARRY	
SPRINGS	
MARSH	

TRUNK HIGHWAY R/W LINE	EXC.
RAILROAD R/W LINE	E.
PRESENT ROAD R/W LINE	L.R.
	S.R.
	F.
	H.
	S.
	R.D.
	S.E.
	S.P.
	G.R.
	C.M.CULV.
	P.CULV.
	P.S.CULV.
	T.M.
	T.E.L.P.
	P.P.
	P.
	INP.
	REP.
	RT.
	LT.
	Δ
	R.
	T.
	L.
	P.C.
	P.T.
	P.I.
	V.C.
	B.M.
	E.L.
	A.

GROSS LENGTH	FEET	MILES
BRIDGES-LENGTH	FEET	MILES
EXCEPTIONS-LENGTH	FEET	MILES
NET LENGTH	FEET	MILES

PLAN. 1 Inch = ... Feet  
PROFILE. Horz. 1 Inch = ... Feet. Vert. 1 Inch = ... Feet  
WORKING PLANS Horz. 1 Inch = 100 Feet  
Vert. 1 Inch = 10 Feet  
Cross-Section. 1 Inch = 10 Feet.

LAYOUT  
Scale 1 Inch = .0000 Feet

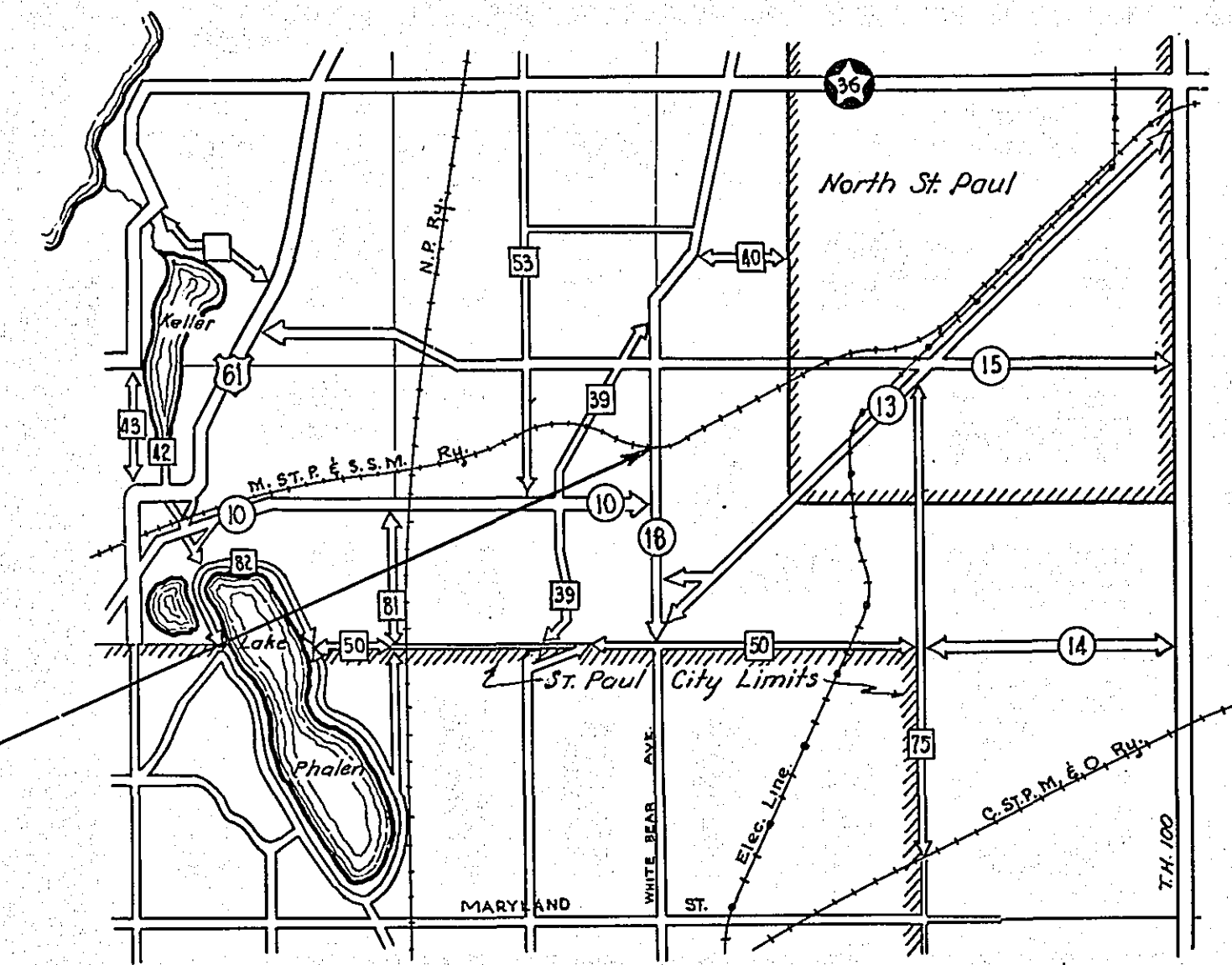
The "Specifications for Highway Construction" dated July 1, 1938 and submitted to the Bureau of Public Roads for Approval July 18, 1938 and Recommended for Approval by the District Engineer of the Bureau of Public Roads July 25, 1938 shall govern.

HIGHWAY CROSSING SIGNALS F.A.G.S. 56-A(1)	
LETTING DATE	APPROVED 19...
GROSS LENGTH	Feet Miles Feet Miles Feet Miles
BRIDGES-LENGTH	Feet Miles Feet Miles Feet Miles
EXCEPTIONS-LENGTH	Feet Miles Feet Miles Feet Miles
NET LENGTH	Feet Miles Feet Miles Feet Miles

PIT DATA

MATERIAL TO BE OBTAINED FROM PITS DESIGNATED ON SHEET No. 2

PIT NO.	Located in	Dead Haul
PIT NO.	Located in	Dead Haul
PIT NO.	Located in	Dead Haul
PIT NO.	Located in	Dead Haul
PIT NO.	Located in	Dead Haul
PIT NO.	Located in	Dead Haul
PIT NO.	Located in	Dead Haul
PIT NO.	Located in	Dead Haul
PIT NO.	Located in	Dead Haul



HIGHWAY CROSSING SIGNALS  
F.A.G.S. 56-A(1)

RAMSEY COUNTY.

Planned By C.W. Lilly 3/16/39  
ENGINEER OF PLANS  
Recommended for Approval H.E. Glass 3/16/39  
DISTRICT ENGINEER  
Recommended for Approval F.F. Johnson 3/16/39  
ENG. OF SURVEYS & DESIGN  
Recommended for Approval C.L. Mathews 3-23-39  
ASSISTANT CONSTRUCTION ENGINEER  
Approved 3-24-1939 O.L. Kipp  
ACTING CHIEF ENGINEER

Right of Way Approval J.R. Green 3-16-39  
ENG. OF LANDS & RIGHT OF WAY  
Roadside Development Approval Hand E. Olson 3-16-39  
ENG. OF ROADSIDE DEVELOPMENT

Recommended for Approval [Signature]  
DISTRICT ENGINEER, B. OF P. R.  
Recommended for Approval [Signature]  
CHIEF ENGINEER, B. OF P. R.  
Approved [Signature]  
DIRECTOR, B. OF P. R.

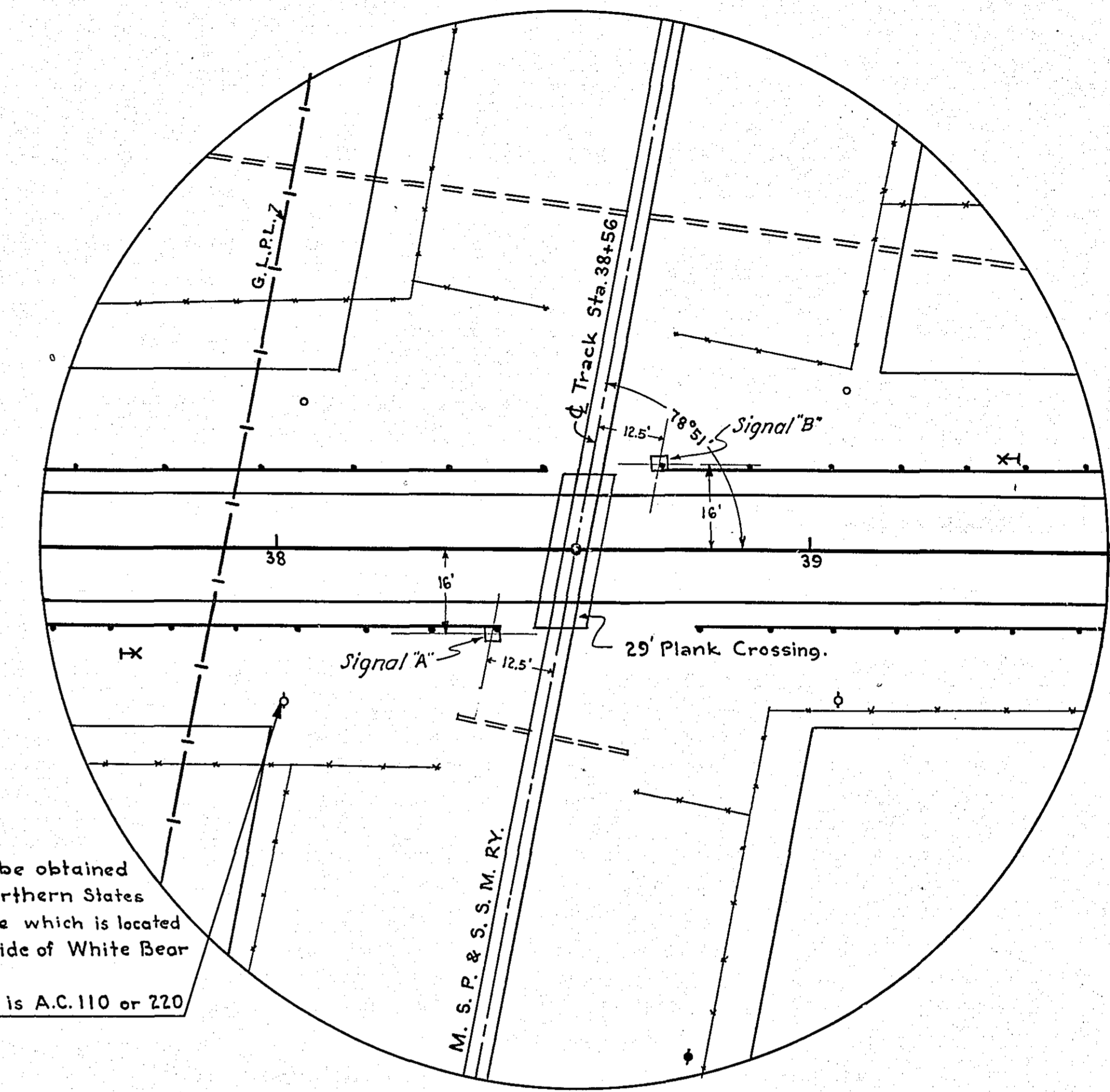
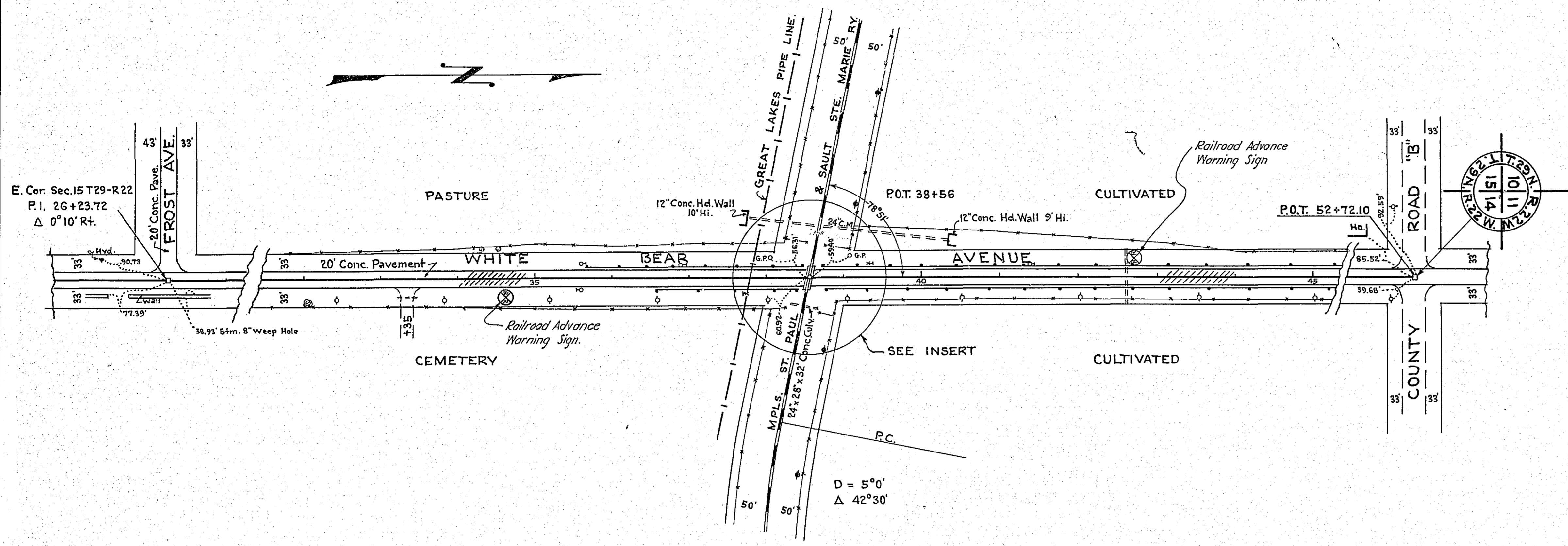
FED. ROAD DIST. NO.	STATE	F.A.G.S.	SEC.	FISCAL YEAR	SHEET NO.	TOTAL SHEETS
4	MINN.	56-A(1)			2	7

33+35 R.L.  
Inp 15'x26' C.M.

**PLAN**  
Scale 1"=100'

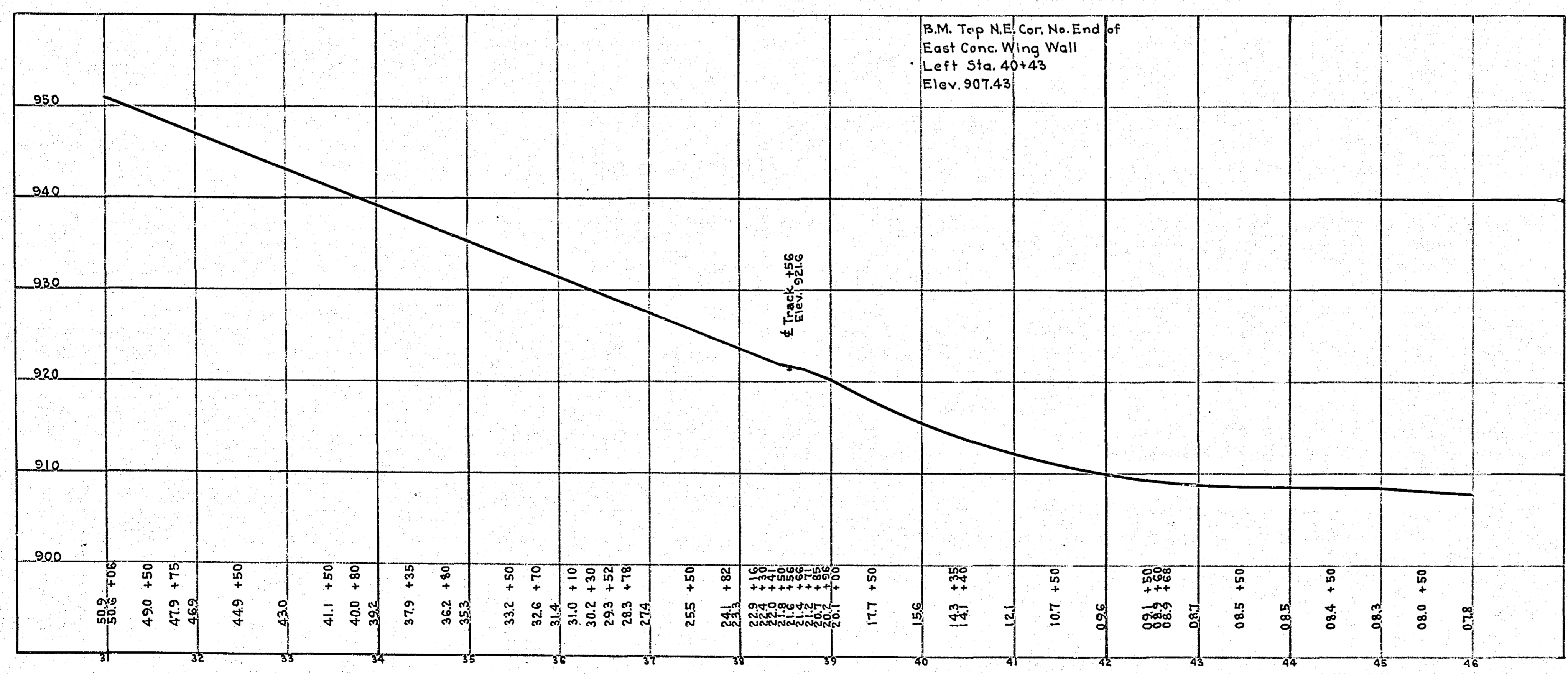
42+61 ±  
Inp. 36'x67' C.M.

**INSERT**  
Scale 1"=25'



NOTE: Power can be obtained from the Northern States Power Co. line which is located on the East side of White Bear Ave. The Voltage is A.C. 110 or 220

**PROFILE**  
Scale [Hor. 1"=100'  
Ver. 1"=10']



ESTIMATED QUANTITIES.			
	ITEM	UNIT	TOTAL ESTIMATED QUANTITIES
2560.5	Highway-Railroad Grade Crossing Signal System in place (including 2 Signals & 2 R.R. Advance Warning Signs)	Signal System	1
2561.5	do	do	1
2562.5	do	do	1

**SIGNALS:**

- The locations at which signals are to be placed will be determined at the site. Those indicated on the plans are only approximate.
- A bell is to be installed on Signal "A".

**RAILROAD ADVANCE WARNING SIGNS:**

- The Railroad Advance Warning Signs shall be furnished and erected by the Contractor at the locations indicated on the Plans.
- Each sign shall be erected on 2 steel posts of a height of 4.75 feet above the crown of the roadbed, in accordance with details shown on sheet No. 3 of the Plans.