

CONVENTIONAL SIGNS & ABBREVIATIONS

STATE LINE	-----	EXCAVATION	F
COUNTY LINE	-----	EMBANKMENT	F
TOWNSHIP LINE	-----	OVERHAUL	H
SECTION LINE	-----	SURFACING	S
CITY, VILLAGE, OR BOROUGH	-----	GUARD RAIL	GR
FENCE LINE	-----	INTERSECTION ANGLE	A
RIGHT-OF-WAY LINE	-----	RADIUS	R
TRAVELLED WAY	-----	ELEVATION	EL
RAILROADS	-----	VERTICAL CURVE	VC
RETAINING WALL	-----	BENCH MARK	B.M.
BASE OF SURVEY LINE	-----	SECTIONAL CONCRETE CULVERT	P.C.
LEVEE	-----	CORRUGATED METAL CULVERT	C.M.
GRAVEL PIT	CULVERT HAUL	P.L.H.
SAND PIT	TOW MILES	T.M.
CLAY PIT	PLACE	P
ROCK QUARRY	IN PLACE	INP
CULVERTS	REPLACE	REP
PLAIN	-----	RIGHT	R
WITH FACE WALLS	-----	LEFT	L
WITH WING WALLS	-----	HAND DITCHING	H.D.
DROP INLET	POINT OF CURVE	P.C.
POWER POLE LINE	POINT OF TANGENT	P.T.
TELEPHONE OR TELEGRAPH LINE	POINT OF INTERSECTION	P.I.
MARSH	SPECIAL EXCAVATION	S.E.
HEDGE, BRUSH, OR TIMBER	SPECIAL FLOWING	S.P.
GROUND ELEVATION	TELEPHONE POLE	T.E.P.
GRADE ELEVATION			

OFFICE OF COUNTY SURVEYOR

RAMSEY COUNTY

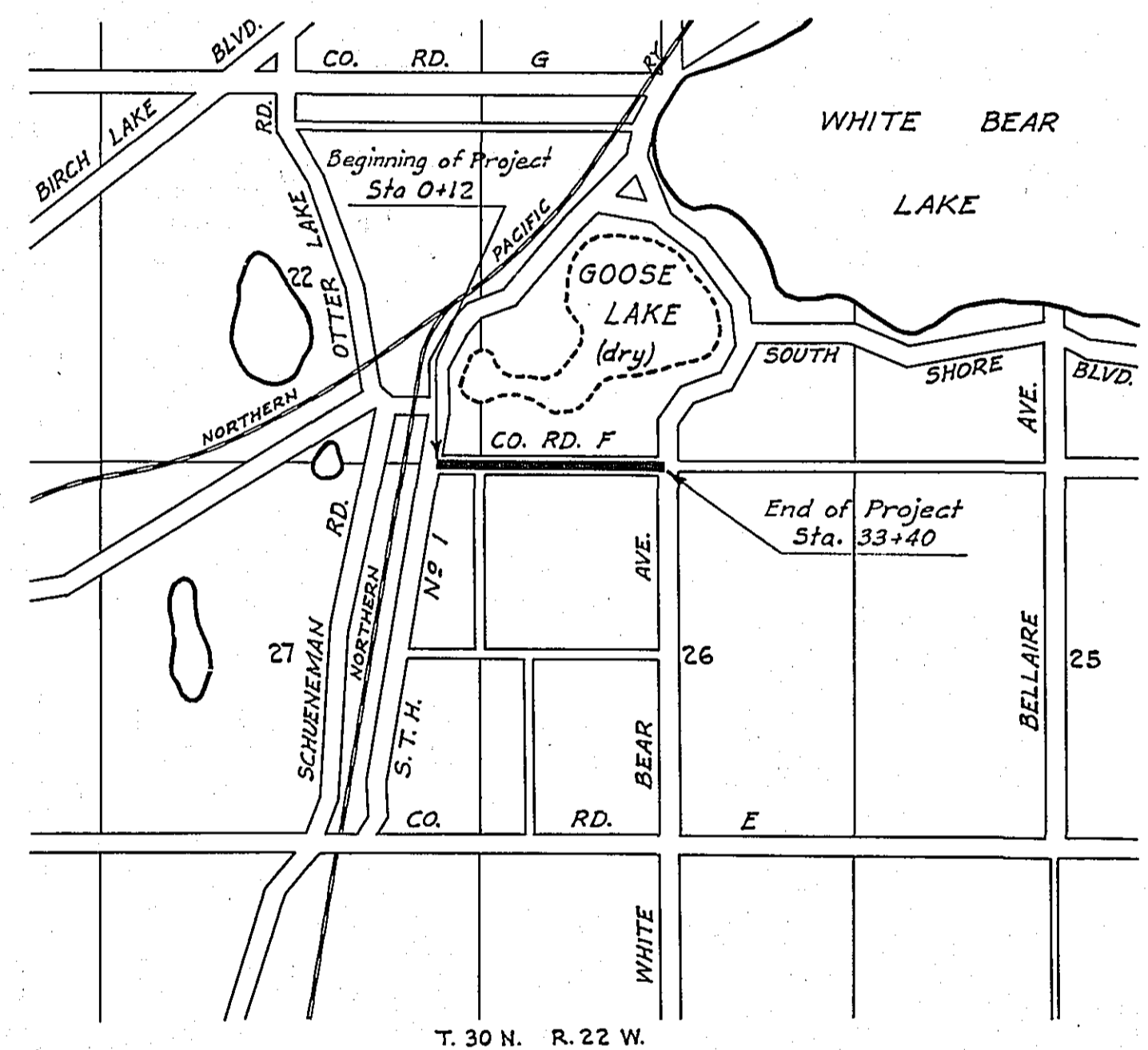
Plan and Profile of County Project No. 33-W4

From a point which is 713.85 ft. W. of the N.W. Cor. of Sec. 26-30-22, to a point which is 13.60 ft. W. of the N. 1/4 Cor. of Sec. 26-30-22.

GROSS LENGTH- 3328.0 FEET .63 MILES
 LENGTH OF EXCEPTIONS- FEET MILES
 NET LENGTH- 3328.0 FEET .63 MILES
 PLAN, 1 Inch = 100 Feet
 PROFILE, Horz. 1 Inch = 100 Feet. Vert. 1 Inch = 10 Feet
 WORKING PLANS { Horz. 1 Inch = 100 Feet
 Vert. 1 Inch = 10 Feet
 Cross-Sections, 1 Inch = 10 Feet
 LAYOUT
 SCALE, 1 Inch = 2640 Feet

INDEX OF SHEETS

- Sheet No. 1. Title Sheet and Layout Map
- " No. 2. Typical Cross-Sections and Statement
- " No. 3. Plan and Profile, Sta. 0+12.00 to Sta. 33+40.00
- " No. 4. to 6 Incl. Cross-Sections.



Date of Resolution for Preparation of Plans Sept. 18, 1933

Planned by W. W. Campbell ASSISTANT ENGINEER

Recommended for Approval [Signature] ASSISTANT ENGINEER

Plans Approved and Recommended for Consideration [Signature] COUNTY SURVEYOR

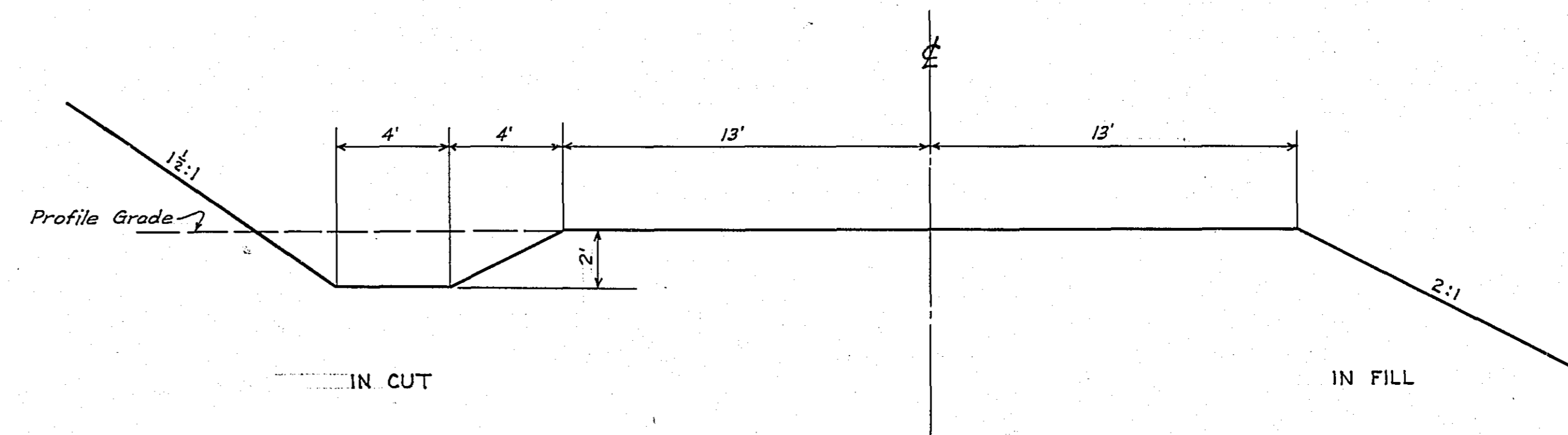
Approved 9/29 1933 [Signature] CHAIRMAN OF TOWNBOARD

Approved by County Board 10/4/1933 [Signature] CHAIRMAN OF COUNTY BOARD

STATEMENT OF ESTIMATED QUANTITIES

CLASS	ITEM	UNIT	MILE	MILE	MILE	MILE	MILE	MILE	MILE	MILE	MILE	TOTAL ESTIMATED QUANTITIES
			From 0+12 To 33+40	From To	From To	From To	From To	From To	From To	From To	From To	
GRADING	1	Clearing	Trees	22								22
	2	Grubbing	Trees	28								28
	3	Clearing	Acres									
	4	Grubbing	Acres									
	5	Excavation Earth	Cu. Yds.	4129								4129
	6	Excavation Loose Rock	Cu. Yds.	20								20
	7	Excavation Solid Rock	Cu. Yds.	10								10
	8	Excavation Overhaul	Cu. Yds.	310								310
	9	Excavation Special	Cu. Yds.									
	10	Excavation Hand Ditch	Cu. Yds.									
	11	Install 12" C.M.	Lin. Ft.									
	12	Install 15" C.M.	Lin. Ft.	60								60
	13	Install 18" C.M.	Lin. Ft.									
	14	Install 24" C.M.	Lin. Ft.									
	15	Install	Lin. Ft.									
	16	Install	Lin. Ft.									
	17	Install 18" Ps	Lin. Ft.	114								114
	18	Install 24" Ps	Lin. Ft.									
	19	Install 30" Ps	Lin. Ft.									
	20	Install 36" Ps	Lin. Ft.									
	21	Install	Lin. Ft.									
	22	Install	Lin. Ft.									
	23	Remove Old Culvert	Lin. Ft.	120								120
	24	Replace Old Culvert	Lin. Ft.	90								90
	25	Finishing and Seeding	100 Sq.Yds.									
	26	Rubble Gutter	Cu. Yds.									
	27	Headwall Concrete	Cu. Yds.									
	28	Headwall Steel	Lbs.									
	29											
	30											
	31											
	32											
C.M. CULVERTS	1	Furnish 12" C.M.	Lin. Ft.									
	2	Furnish 15" C.M.	Lin. Ft.	60								60
	3	Furnish 18" C.M.	Lin. Ft.									
	4	Furnish 24" C.M.	Lin. Ft.									
	5	Furnish	Lin. Ft.									
	6	Furnish	Lin. Ft.									
	7	Furnish 12" C.M. Band	Each									
	8	Furnish 15" C.M. Band	Each									
	9											
	10											
P ₃ CULVERTS	1	Furnish 18" Ps	Lin. Ft.	114								114
	2	Furnish 24" Ps	Lin. Ft.									
	3	Furnish 30" Ps	Lin. Ft.									
	4	Furnish 36" Ps	Lin. Ft.									
	5											
	6											
GUARD RAIL	1	Guard Rail - Cable	Lin. Ft.	750								750
	2	Guard Rail Anchors	Each	10								10
	3	Dummy Posts	Each									
	4											
SIDEWALKS AND CURBING	1	Concrete Curb - Straight	Lin. Ft.									
	2	Concrete Curb - Radius	Lin. Ft.									
	3	Remove Old Curb	Lin. Ft.									
	4	Remove Old Curb and Gutter	Lin. Ft.									
	5	Remove Old Sidewalk	Sq. Ft.									
	6	Replace Old Sidewalk	Sq. Ft.									
	7	Construct New Sidewalk	Sq. Ft.									
	8	Curb Inlet	Each									
	9	Catch Basin Complete	Each									
	10											
	11											
	12											
SEWER	1	12" Vitrified Sewer Pipe	Lin. Ft.									
	2	15" Vitrified Sewer Pipe	Lin. Ft.									
	3	18" Vitrified Sewer Pipe	Lin. Ft.									
	4	20" Vitrified Sewer Pipe	Lin. Ft.									
	5	24" Vitrified Sewer Pipe	Lin. Ft.									
	6	Manhole Complete	Each									
	7	Catch Basin Complete	Each									
8												
9												
10												
PAVEMENT	1	Pavement - 1 Course Conc.	Sq. Yds.									
	2	Pavement - Asphaltic Conc.	Sq. Yds.									
	3	Integral Curb 8"	Lin. Ft.									
	4	Integral Curb 12"	Lin. Ft.									
	5	Surface Drain	Each									
	6	Surface Drain Basin	Each									
	7	Shoulders - Earth	Lin. Ft.									
	8											
STRUCTURES	1	Concrete	Cu. Yds.									
	2	Reinforcing Steel	Lbs.									
	3	Excavation	Cu. Yds.									
	4	Piling	Lin. Ft.									
	5											
6												
7												
8												
9												
10												

DETAILS

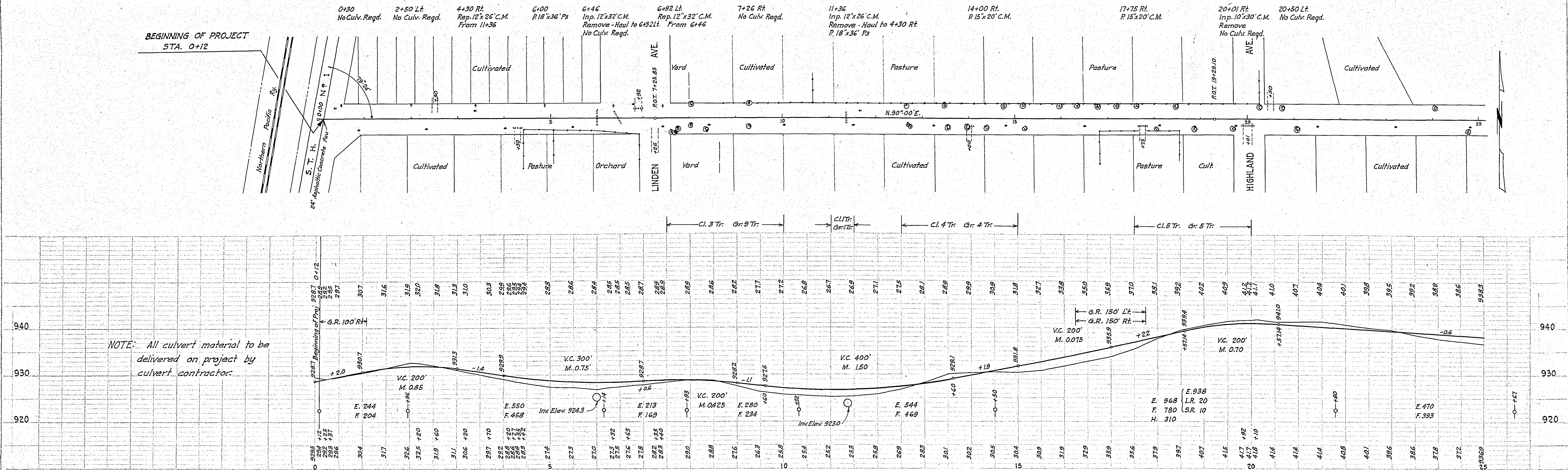


TYPICAL GRADING SECTION

PLAN
 REVIEWED
 DATE
 CHECKED
 DATE
 DRAWN
 DATE

PROFILE
 REVIEWED
 DATE
 CHECKED
 DATE
 DRAWN
 DATE

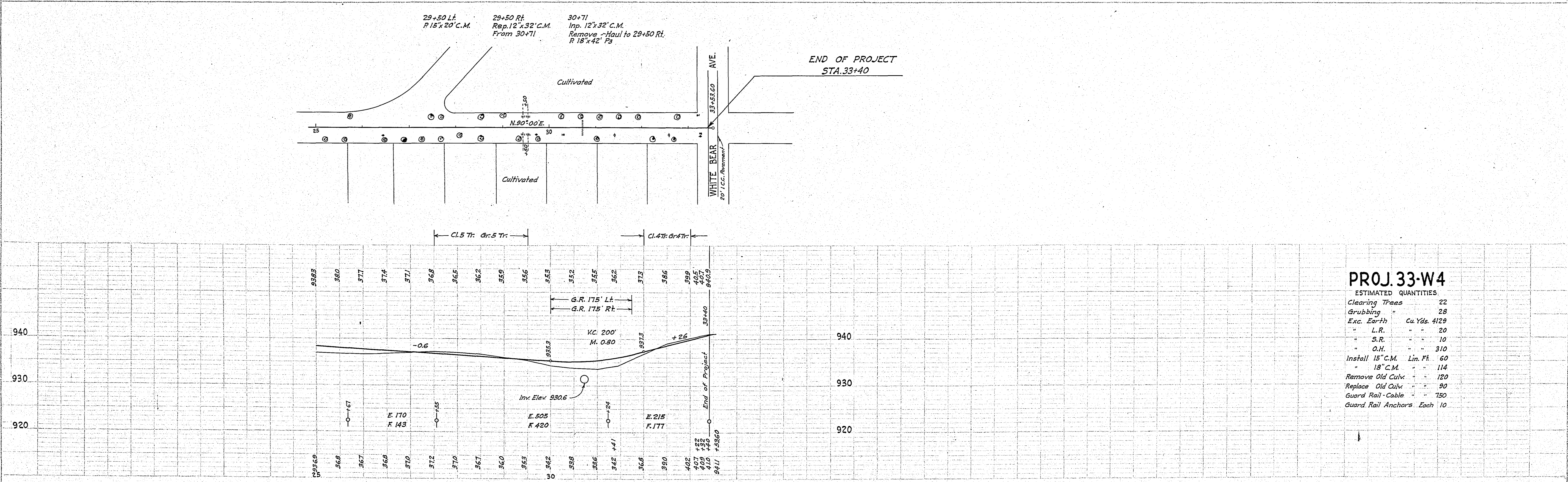
BEGINNING OF PROJECT
 STA. 0+12



29+50 Lt. P.15'x20' C.M.
 29+50 Rt. Rep. 12'x32' C.M. From 30+71
 30+71 Inp. 12'x32' C.M. Remove - Haul to 29+50 Rt. R.18'x42' P3

END OF PROJECT
 STA. 33+40

WHITE BEAR
 20' I.C.C. Reinforced



PROJ. 33-W4

ESTIMATED QUANTITIES

Clearing Trees	22
Grubbing	28
Exc. Earth	Cu. Yds. 4129
L.R.	20
S.R.	10
O.H.	310
Install 15' C.M.	Lin. Ft. 60
18' C.M.	114
Remove Old Culv.	120
Replace Old Culv.	90
Guard Rail - Cable	750
Guard Rail Anchors	Each 10

6102