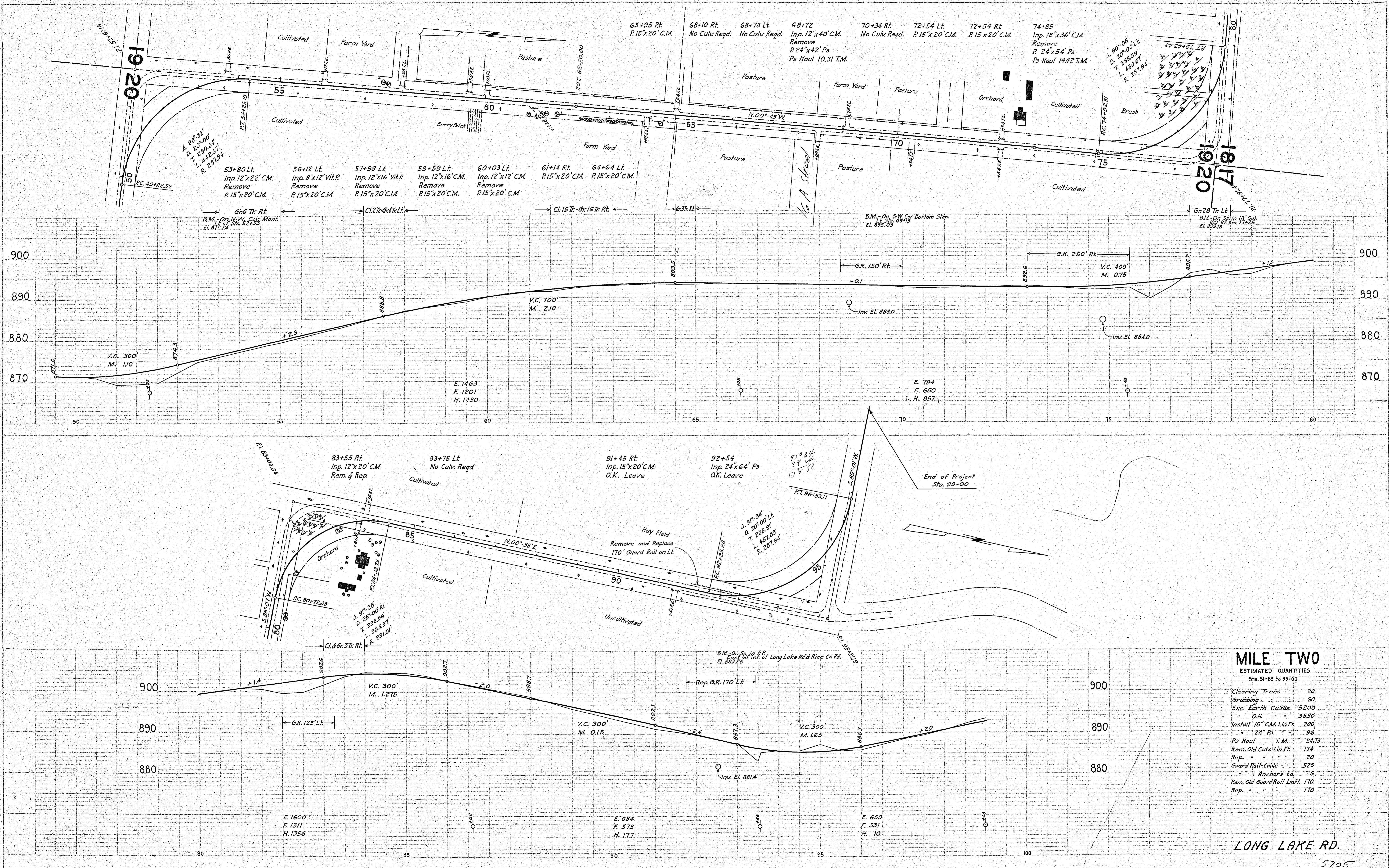


PLAN
 NOTE: FOR ALL DIMENSIONS CHECKED BY FIELD.
 NO. 10

PROFILE
 NOTE: FOR ALL DIMENSIONS CHECKED BY FIELD.
 NO. 10



MILE TWO

ESTIMATED QUANTITIES
 Sta. 51+83 to 99+00

Clearing Trees	20
Grubbing "	60
Exc. Earth Cu.Yds.	5200
" O.H.	3830
Install 15" C.M. Lin.Ft.	200
" 24" Ps	96
Ps Haul T.M.	2473
Rem. Old Culv. Lin.Ft.	174
Rep. " " "	20
Guard Rail-Cable	525
" Anchors Ea.	6
Rem. Old Guard Rail Lin.Ft.	170
Rep. " " "	170

LONG LAKE RD.

5705

STATEMENT OF ESTIMATED QUANTITIES AND COSTS.

ITEM	UNIT	MILE ONE		MILE TWO		MILE THREE		MILE FOUR		MILE FIVE		MILE SIX		MILE SEVEN		MILE EIGHT		TOTAL ESTIMATED QUANTITIES	ESTIMATED UNIT PRICES	AMOUNTS	TOTALS
		Sta. 01683 to Sta. 51183	Sta. 51183 to Sta. 52100	Sta. to Sta.	Sta. to Sta.	Sta. to Sta.	Sta. to Sta.	Sta. to Sta.	Sta. to Sta.	Sta. to Sta.	Sta. to Sta.	Sta. to Sta.	Sta. to Sta.	Sta. to Sta.	Sta. to Sta.	Sta. to Sta.	Sta. to Sta.				
1	Clearing	Acre																			
2	Clearing	Tree	28	20														48			
3	Grubbing	Acre																			
4	Grubbing	Tree	112	60														172			
5	Excavation - Earth	Cu. Yd.	8207	5200														13607			
6	Excavation - Loose Rock	Cu. Yd.																			
7	Excavation - Solid Rock	Cu. Yd.																			
8	Excavation - Overhaul	Cu. Yd.	2118	3830														5948			
9	Special Excavation	Lin. Ft.																			
10	Hand Ditching	Cu. Yd.																			
11	Tile Drain	in. Lin. Ft.																			
12	Tile Drain	in. Lin. Ft.																			
13	Tile Drain	in. Lin. Ft.																			
14	Porous Back Fill Material	Cu. Yd.																			
15	Stone Rip - Rap	Cu. Yd.																			
16	Gravel Rip Rap or Stone Drain Material	Cu. Yd. mile																			
17	Install	Lin. Ft.																			
18	Install 15" C.M.	Lin. Ft.	40	200														240			
19	Install	Lin. Ft.																			
20	Install	Lin. Ft.																			
21	Install	Lin. Ft.																			
22	Install	Lin. Ft.																			
23	Install	Lin. Ft.																			
24	Install	Lin. Ft.																			
25	Install 24" P ₃	Lin. Ft.	150	96														246			
26	Install 30" P ₃	Lin. Ft.																			
27	Install 36" P ₃	Lin. Ft.	48															48			
28	P ₁ Culvert Haul	Ton Mile																			
29	P ₃ Culvert Haul	Ton Mile	2433	2022														4455			
30	Remove old culv.	Lin. Ft.	115	174														289			
31	Replace old culv.	Lin. Ft.																20			
32	Remove old guard rail	Lin. Ft.																170			
TOTAL ESTIMATED COST OF GRADING (IN 'TOTALS' COLUMN)																					
33	Culv. Material	Lin. Ft.																			
34	C.M. Culv. Material 15"	Lin. Ft.	40	200														240			
35	Culv. Material	Lin. Ft.																			
36	Culv. Material	Lin. Ft.																			
37	Culv. Material	Lin. Ft.																			
38	Culv. Material	Lin. Ft.																			
39	P ₃ Culv. Material 24"	Lin. Ft.	150	96														246			
40	P ₃ Culv. Material 30"	Lin. Ft.																			
41	P ₃ Culv. Material 36"	Lin. Ft.	48															48			
TOTAL ESTIMATED COST OF PORTABLE CULVERT MATERIAL (IN 'TOTALS' COLUMN)																					
42	Gravel Pit Stripping	Cu. Yd.																			
43	Screening	Cu. Yd.																			
44	Loading	Cu. Yd.																			
45	Hauling	Cu. Yd. Mile																			
46	Shaping & Compacting	Man Hour																			
47	Shaping & Compacting	Man Hour																			
48																					
49																					
50																					
51																					
TOTAL ESTIMATED COST OF GRAVEL HAUL (IN 'TOTALS' COLUMN)																					
52	Gravel Material F. O. B. PIT	Cu. Yd.																			
53	Freight (If any)	Cu. Yd.																			
54	Unloading from Ctrs	Cu. Yd.																			
TOTAL ESTIMATED COST OF GRAVEL MATERIAL (IN 'TOTALS' COLUMN)																					
55	Fine Grading - Exc. & Emb.	Cu. Yd.																			
56	Shoulders - Earth	Cu. Yd.																			
57																					
58																					
59	Pavement	Sq. Yd.																			
60	Integral Curb / One Course Concrete	Lin. Ft.																			
61	Sloping Curb	Lin. Ft.																			
62	Surface Drain	Lin. Ft.																			
63	Surface Drain Basins	Basin																			
64	Bridge Approach Slabs (Square)	Slab																			
65	Bridge Approach Slabs (Rect.)	Slab																			
66																					
67																					
68																					
TOTAL ESTIMATED COST OF PAVEMENT CONSTRUCTION (IN 'TOTALS' COLUMN)																					
69	Concrete	Cu. Yd.																			
70	Reinforcing Steel	Lb.																			
71	Excavation - Earth	Cu. Yd.																			
72	Excavation - Loose Rock	Cu. Yd.																			
73	Excavation - Solid Rock	Cu. Yd.																			
74	Bridge	* Bridge No.	Br. No.	Br. No.	Br. No.	Br. No.	Br. No.	Br. No.	Br. No.	Br. No.	Br. No.	Br. No.	Br. No.	Br. No.	Br. No.	Br. No.	Br. No.	Br. No.	Br. No.	Br. No.	Br. No.
75	Station																				
76	Concrete	Cu. Yd.																			
77	Reinforcing Steel	Lb.																			
78	Structural Steel	Lb.																			
79	Piling	Lin. Ft.																			
80	Temporary Crossing	Lump Sum																			
81	Removing old Bridge	Lump Sum																			
82	Bituminous Surface	Sq. Yd.																			
83																					
84																					
TOTAL ESTIMATED COST OF STRUCTURES (IN 'TOTALS' COLUMN)																					
85	Guard Rail (Cable)	Lin. Ft.	1925	525														2450			
86	Guard rail anchors	Each	16	6														22			
87	Replace old guard rail	Lin. Ft.																170			
TOTAL ESTIMATED COST OF MISCELLANEOUS ITEMS (IN 'TOTALS' COLUMN)																					

TYPICAL CROSS SECTIONS AND DETAILS

FED. ROAD DIST. No.	STATE	FED. AID PROJ. No.	SEC.	FISCAL YEAR	SHEET No.	TOTAL SHEETS
4	MINN.					

