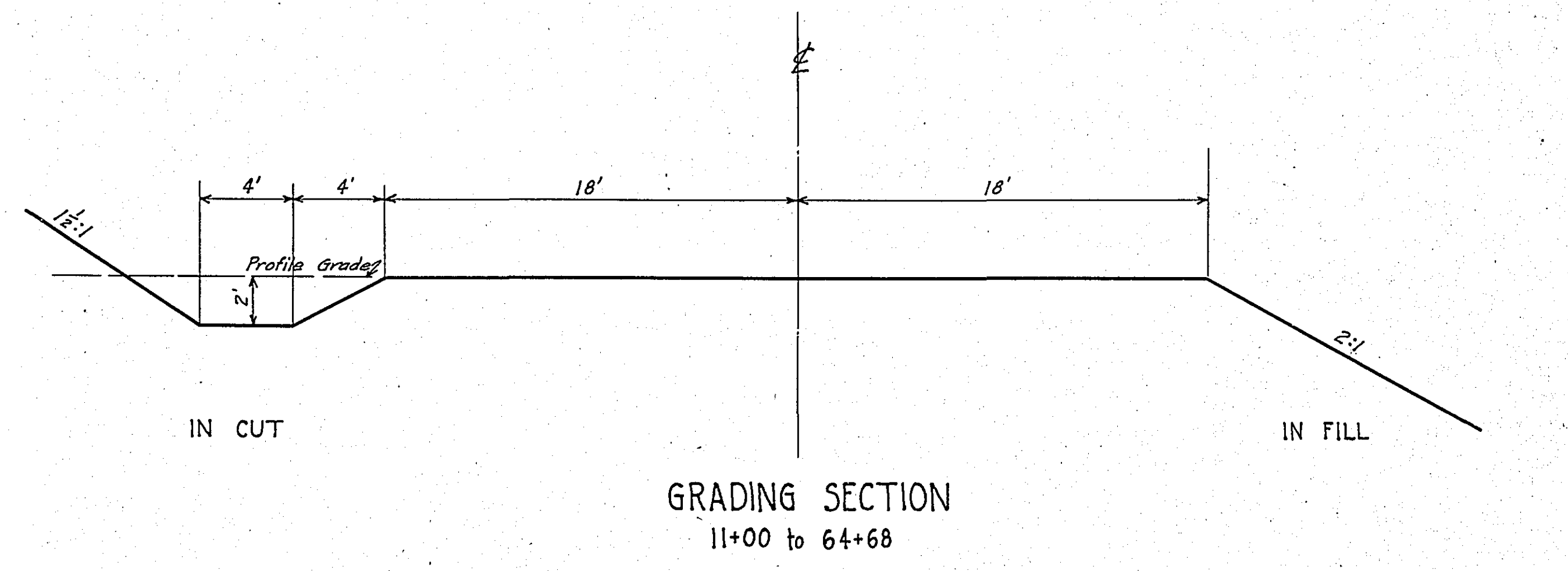
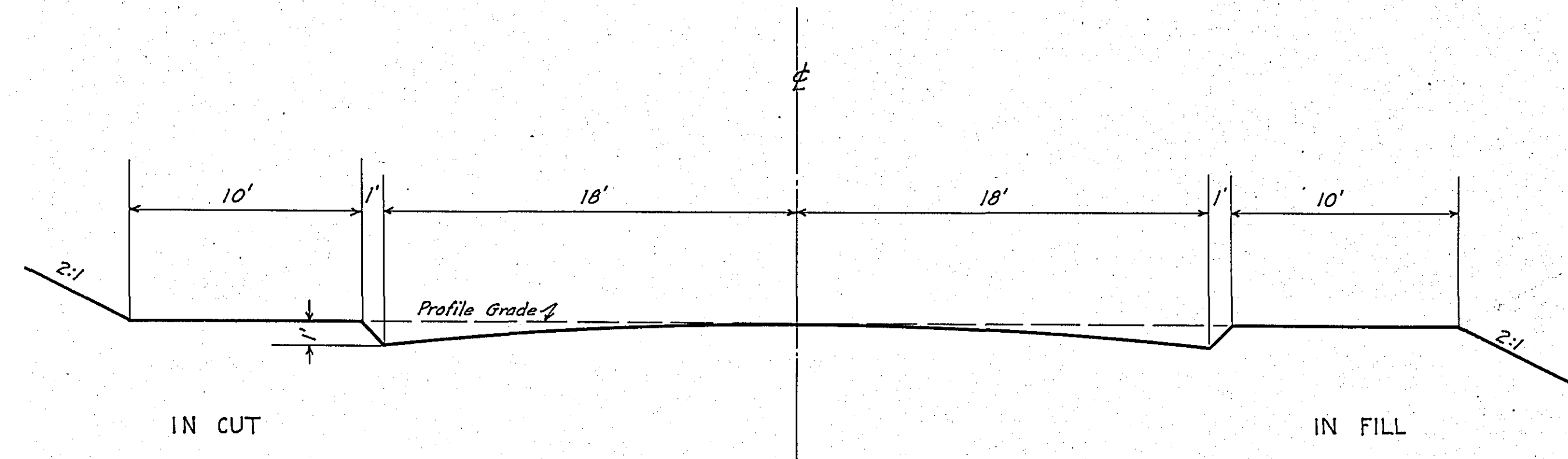


STATEMENT OF ESTIMATED QUANTITIES AND COSTS.

ITEM	UNIT	MILE														TOTAL ESTIMATED QUANTITIES	ESTIMATED UNIT PRICES	AMOUNTS	TOTALS	
		Sta. 1452 to Sta. 64+68.8	Sta. to Sta.	Sta. to Sta.	Sta. to Sta.	Sta. to Sta.	Sta. to Sta.	Sta. to Sta.	Sta. to Sta.	Sta. to Sta.	Sta. to Sta.	Sta. to Sta.	Sta. to Sta.	Sta. to Sta.	Sta. to Sta.					
1	Clearing	Acre	0.12														0.12			
2	Clearing	Tree																		
3	Grubbing	Acre	1.21														1.21			
4	Grubbing	Tree																		
5	Excavation - Earth	Cu. Yd.	7132														7132			
6	Excavation - Loose Rock	Cu. Yd.	35														35			
7	Excavation - Solid Rock	Cu. Yd.	20														20			
8	Excavation - Overhaul	Cu. Yd.	4500														4500			
9	Special Excavation	Lin. Ft.																		
10	Hand Ditching	Cu. Yd.																		
11	Tile Drain	in. Lin. Ft.																		
12	Tile Drain	in. Lin. Ft.																		
13	Tile Drain	in. Lin. Ft.																		
14	Porous Back Fill Material	Cu. Yd.																		
15	Stone Rip - Rap	Cu. Yd.																		
16	Heating Rip-Rap or Stone Drain Material	Cu. Yd. mile																		
17	Install C.M. 15"	Lin. Ft.	240														240			
18	Install C.M. 36"	Lin. Ft.	26														26			
19	Install	Lin. Ft.																		
20	Install	Lin. Ft.																		
21	Install	Lin. Ft.																		
22	Install	Lin. Ft.																		
23	Install	Lin. Ft.																		
24	Install	Lin. Ft.																		
25	Install 18" Ps	Lin. Ft.	192														192			
26	Install 30" Ps	Lin. Ft.																		
27	Install 36" Ps	Lin. Ft.																		
28	Pi Culvert Haul	Ton Mile																		
29	Ps Culvert Haul	Ton Mile	17.36														17.36			
30	Remove old culv	Lin. Ft.	64														64			
31	Remove Conc. H. Walls	Each	2														2			
TOTAL ESTIMATED COST OF GRADING			(IN 'TOTALS' COLUMN)																	
33	C.M. Culv. Material 15"	Lin. Ft.	240														240			
34	C.M. Culv. Material 36"	Lin. Ft.	26														26			
35	Culv. Material	Lin. Ft.																		
36	C.M. Boards 36"	Each	2														2			
37	Culv. Material	Lin. Ft.																		
38	Culv. Material	Lin. Ft.																		
39	Ps Culv. Material 18"	Lin. Ft.	192														192			
40	Ps Culv. Material 30"	Lin. Ft.																		
41	Ps Culv. Material 36"	Lin. Ft.																		
TOTAL ESTIMATED COST OF PORTABLE CULVERT MATERIAL			(IN 'TOTALS' COLUMN)																	
42	Gravel Pit Stripping	Cu. Yd.																		
43	Screening	Cu. Yd.																		
44	Loading	Cu. Yd.																		
45	Hauling	Cu. Yd. Mile																		
46	Shaping & Compacting	Man Hour																		
47	Shaping & Compacting	Man & Team Hour																		
48																				
49																				
50																				
51																				
TOTAL ESTIMATED COST OF GRAVEL HAUL			(IN 'TOTALS' COLUMN)																	
52	Gravel Material F. O. B. Pit	Cu. Yd.																		
53	Freight (If any)	Cu. Yd.																		
54	Unloading from Cars	Cu. Yd.																		
TOTAL ESTIMATED COST OF GRAVEL MATERIAL			(IN 'TOTALS' COLUMN)																	
55	Fine Grading - Exc. & Emb.	Cu. Yd.																		
56	Shoulders - Earth	Cu. Yd.																		
57																				
58																				
59	Pavement	Sq. Yd.																		
60	Integral Curb (One Course Concrete)	Lin. Ft.																		
61	Sloping Curb	Lin. Ft.																		
62	Surface Drain	Lin. Ft.																		
63	Surface Drain Basins	Basin																		
64	Bridge Approach Slabs (Concrete)	Slab																		
65	Bridge Approach Slabs (Asphalt)	Slab																		
66																				
67																				
68																				
TOTAL ESTIMATED COST OF PAVEMENT CONSTRUCTION			(IN 'TOTALS' COLUMN)																	
69	Concrete	Cu. Yd.																		
70	Reinforcing Steel	Lb.																		
71	Excavation - Earth	Cu. Yd.																		
72	Excavation - Loose Rock	Cu. Yd.																		
73	Excavation - Solid Rock	Cu. Yd.																		
74	Bridge	* Bridge No.	Br. No.	Br. No.	Br. No.	Br. No.	Br. No.	Br. No.	Br. No.	Br. No.	Br. No.	Br. No.	Br. No.	Br. No.	Br. No.	Br. No.	Br. No.	Br. No.	Br. No.	
75	Station																			
76	Concrete	Cu. Yd.																		
77	Reinforcing Steel	Lb.																		
78	Structural Steel	Lb.																		
79	Piling	Lin. Ft.																		
80	Temporary Crossing	Lump Sum																		
81	Removing old Bridge	Lump Sum																		
82	Bituminous Surface	Sq. Yd.																		
83																				
84																				
TOTAL ESTIMATED COST OF STRUCTURES			(IN 'TOTALS' COLUMN)																	
85	Guard Rail	Lin. Ft.																		
86	Cutter	Lin. Ft.																		
87	Excavation for Gutter	Cu. Yd.																		
TOTAL ESTIMATED COST OF MISCELLANEOUS ITEMS			(IN 'TOTALS' COLUMN)																	

TYPICAL CROSS SECTIONS AND DETAILS

FED. ROAD DIST. NO.	STATE	FED. AID PROJ. NO.	SEC.	FISCAL YEAR	SHEET NO.	TOTAL SHEETS
4	MINN.					



NOTE: See Cross Sections for wide ditch between Sta. 30+00 and 35+00.
See profile for special ditch grades Sta. 16+23 & 27-34

* NOTE: BRIDGE ITEMS LISTED UNDER BRIDGE NUMBERS IN MILE COLUMNS REGARDLESS OF LOCATION

CONVENTIONAL SIGNS & ABBREVIATIONS

STATE LINE	-----	EXCAVATION	F
COUNTY LINE	-----	EMBANKMENT	F
TOWNSHIP LINE	-----	OVERPAUL	H
SECTION LINE	-----	SURFACING	S
CITY, VILLAGE, OR BOROUGH	-----	GUARD RAIL	GR
FENCE LINE	-----	INTERSECTION ANGLE	A
RIGHT-OF-WAY LINE	-----	RADIUS	R
TRAVELLED WAY	-----	ELEVATION	EI
RAILROADS	-----	VERTICAL CURVE	VC
RETAINING WALL	-----	BENCH MARK	B.M.
BASE OR SURVEY LINE	-----	SECTIONAL CONCRETE CULVERT	P.C.
LEVEE	-----	CORRUGATED METAL CULVERT	C.M.
GRAVEL PIT	-----	CULVERT HAUL	PLH
SAND PIT	-----	TON MILES	T.M.
CLAY PIT	-----	PLACE	P
ROCK QUARRY	-----	IN PLACE	INP
CULVERTS	-----	REPLACE	Rep
PLAIN	-----	RIGHT	R
WITH FACE WALLS	-----	LEFT	L
WITH WING WALLS	-----	HAND DITCHING	H.D.
DROP INLET	-----	POINT OF CURVE	P.C.
POWER POLE LINE	-----	POINT OF TANGENT	P.T.
TELEPHONE OR TELEGRAPH LINE	-----	POINT OF INTERSECTION	P.I.
MARSH	-----	SPECIAL EXCAVATION	SE
HEDGE, BRUSH, OR TIMBER	-----	SPECIAL FLOWING	SP
GROUND ELEVATION	-----	TELEPHONE POLE	T&P
GRADE ELEVATION	-----		

OFFICE OF COUNTY SURVEYOR
RAMSEY COUNTY

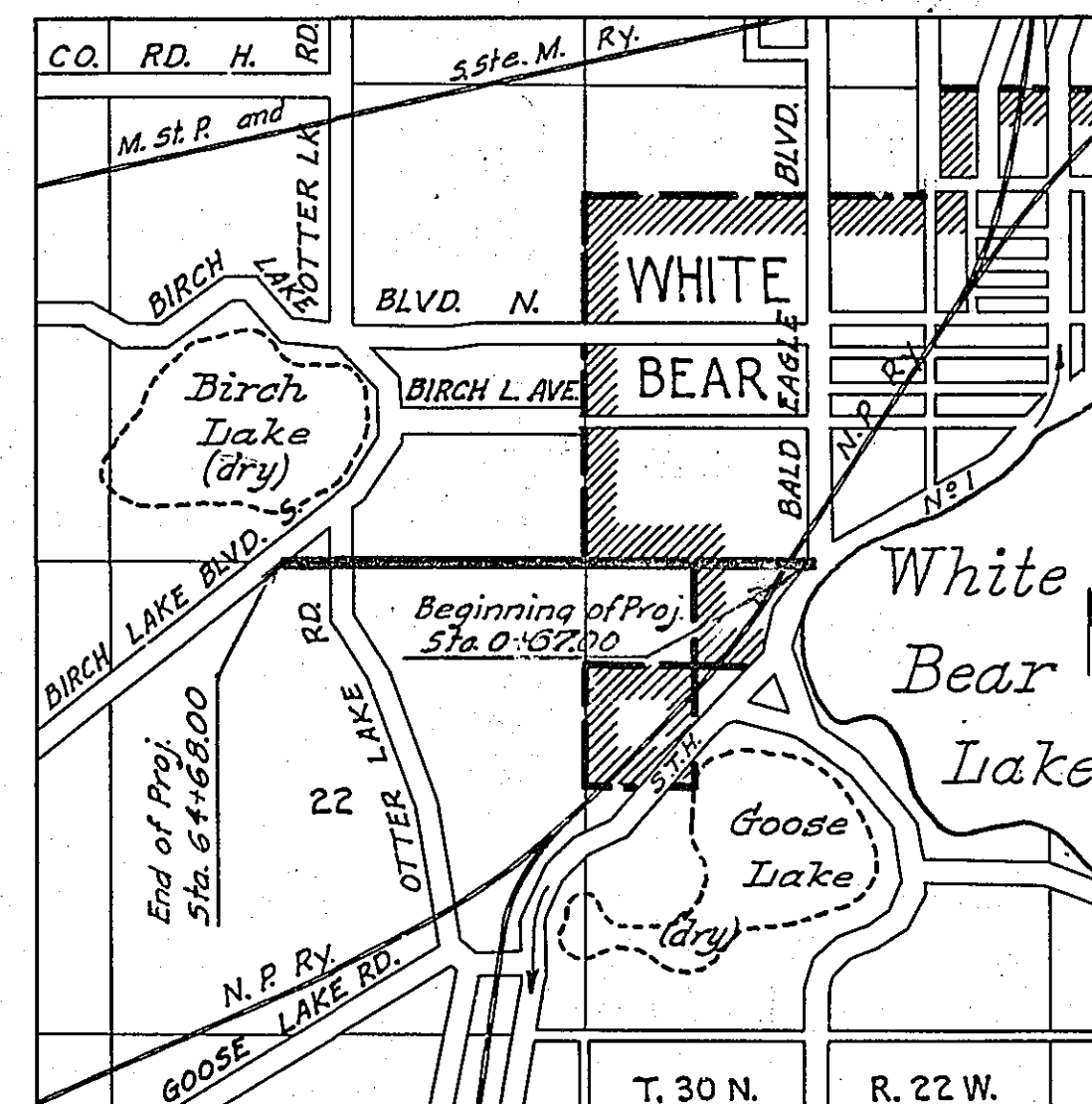
Plan and Profile of County Aid Road (COUNTY ROAD G) PROJ. N° 29-W1

From STATE TRUNK HIGHWAY NO. 1 To BIRCH LAKE BLVD. SOUTH

GROSS LENGTH 6401.0 FEET 1.21 MILES
 LENGTH OF EXCEPTIONS 0.00 FEET 0.00 MILES
 NET LENGTH 6401.0 FEET 1.21 MILES
 PLAN, 1 Inch = 200 Feet
 PROFILE, Horz. 1 Inch = 200 Feet. Vert. 1 Inch = 20 Feet
 WORKING PLANS { Horz. 1 Inch = 200 Feet
 Vert. 1 Inch = 20 Feet
 Cross-Sections, 1 Inch = 10 Feet
 LAYOUT
 SCALE, 1 Inch = 2640 Feet

INDEX OF SHEETS

Sheet No. 1.	Title Sheet and Layout Map
" No. 2.	Typical Cross-Sections and Statement
" No. 3.	Plan and Profile, Sta. 1+56 to Sta. 64+68
" No. 4-5.	Cross-Sections " " " "



Date of Resolution for Preparation of Plans 9/20 1920

Planned by *Richard J. Anderson* ASSISTANT ENGINEER

Recommended for Approval *Wm. Macintosh* CONSTRUCTION ENGINEER

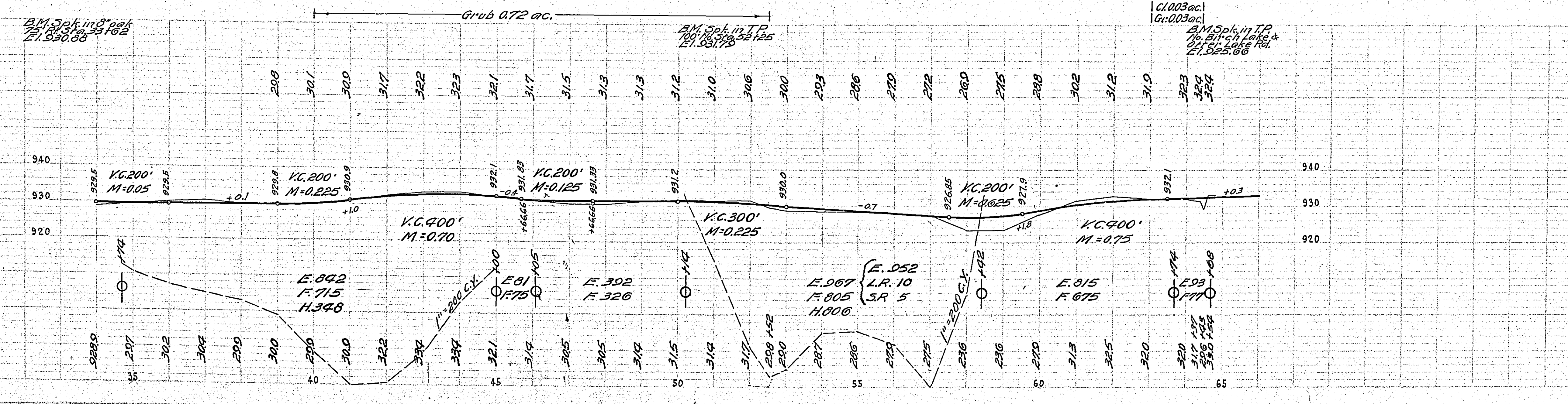
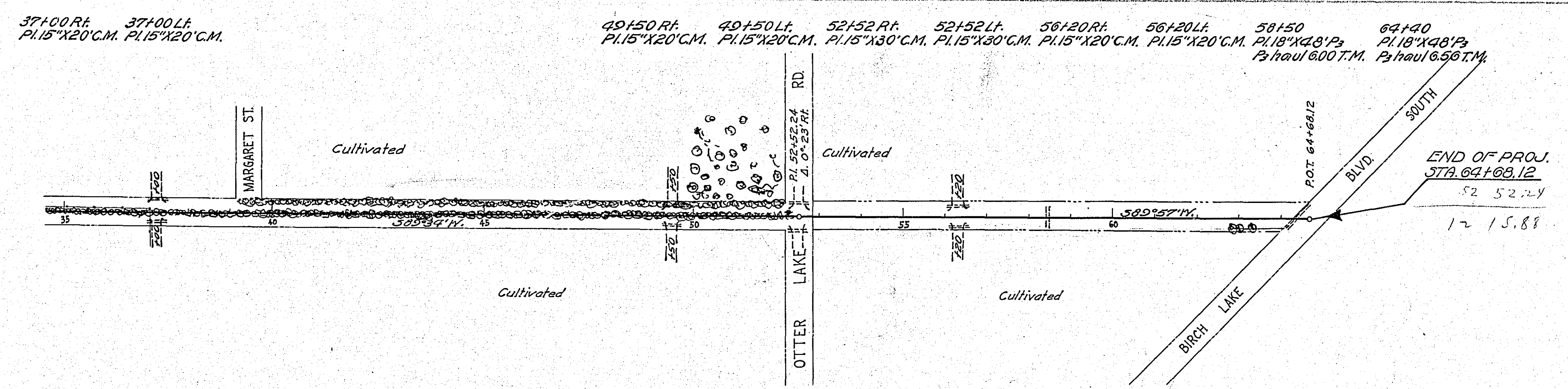
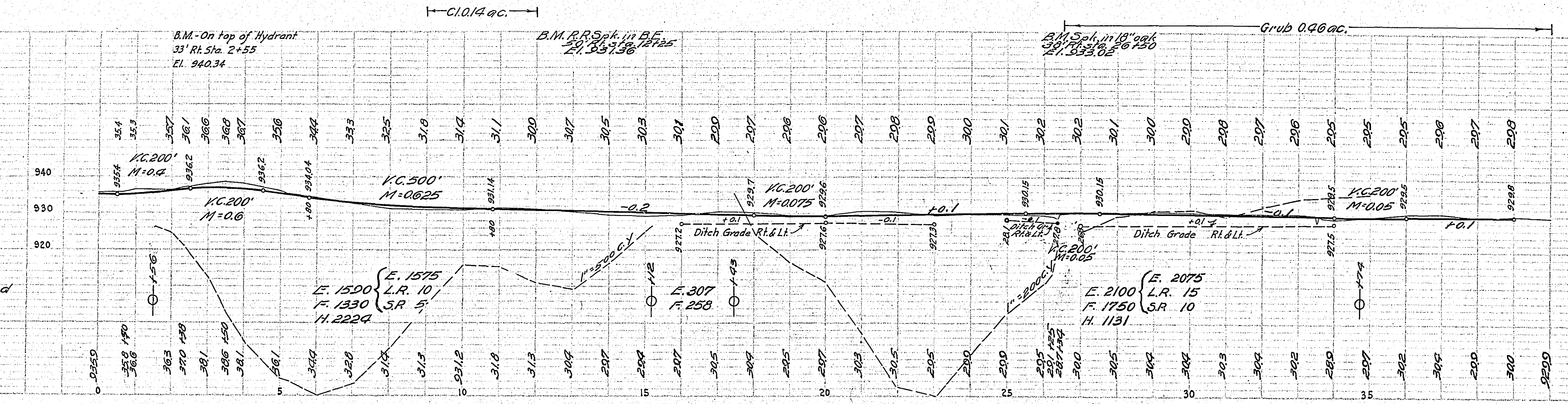
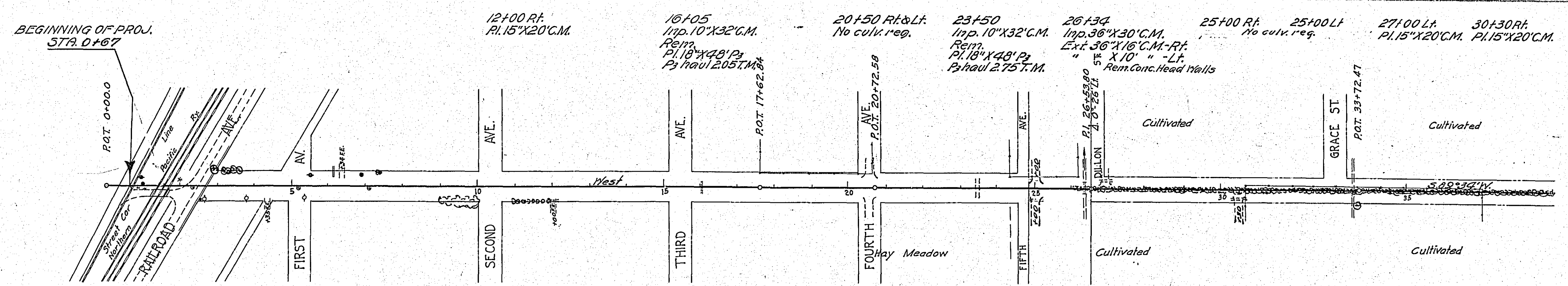
Plans Approved and Recommended for Consideration *Paul J. Coates* COUNTY SURVEYOR

Approved by Town Board *Oct 21, 1920* Approved by County Board *Oct 21, 1920*

Aug 96

PLAN	DATE	BY
REVISED		
NOTE BOOK		
NO.		

PROFILE	DATE	BY
REVISED		
NOTE BOOK		
NO.		



ESTIMATED QUANTITIES

Clearing	Acres	0.17
Grubbing	"	1.21
Exc. Earth	Cu. Yds.	7132
" Loose Rock	"	35
" Solid "	"	20
" Over-haul "	"	4500
Install 15" C.M.	Lin. Ft.	240
" 36" "	"	26
" 18" P2 "	"	192
Hauling P2	T.M.	17.36
Rem. old culv.	Lin. Ft.	64
Conc. Headers Each	"	2