

CONVENTIONAL SIGNS & ABBREVIATIONS

STATE LINE	-----	EXCAVATION	-----	F
COUNTY LINE	-----	EMBANKMENT	-----	F
TOWNSHIP LINE	-----	OVERHAUL	-----	H
SECTION LINE	-----	SURFACING	-----	S
CITY, VILLAGE, OR BOROUGH	-----	GUARD RAIL	-----	G.R.
FENCE LINE	-----	INTERSECTION ANGLE	-----	A
RIGHT-OF-WAY LINE	-----	RADIUS	-----	R
TRAVELLED WAY	-----	ELEVATION	-----	EL
RAILROADS	-----	VERTICAL CURVE	-----	V.C.
RETAINING WALL	-----	BENCH MARK	-----	B.M.
BASE OR SURVEY LINE	-----	SECTIONAL CONCRETE CULVERT	-----	P.C.
LEVEE	-----	CORRUGATED METAL CULVERT	-----	C.M.
GRAVEL PIT	-----	CULVERT HAUL	-----	P.H.
SAND PIT	-----	TON MILES	-----	T.M.
CLAY PIT	-----	PLACE	-----	P
ROCK QUARRY	-----	IN PLACE	-----	INP
CULVERTS	-----	REPLACE	-----	REP.
PLAIN	-----	RIGHT	-----	R
WITH FACEWALLS	-----	LEFT	-----	L
WITH WINGWALLS	-----	HAND DITCHING	-----	H.D.
DROP INLET	-----	POINT OF CURVE	-----	P.C.
POWER POLE LINE	-----	POINT OF TANGENT	-----	P.T.
TELEPHONE OR TELEGRAPH LINE	-----	POINT OF INTERSECTION	-----	P.I.
MARSH	-----	SPECIAL EXCAVATION	-----	S.E.
HEDGE, BRUSH, OR TIMBER	-----	SPECIAL FLOWING	-----	S.F.
GROUND ELEVATION	-----	TELEPHONE POLE	-----	TEL.P.
GRADE ELEVATION	-----			

OFFICE OF COUNTY SURVEYOR

RAMSEY COUNTY

Plan and Profile of County Project No. 28-76

From S.W. Cor. Sec. 12-28-22 To S.E. Cor. Sec. 12-28-22

Give proper reference to Sections, Township and Range

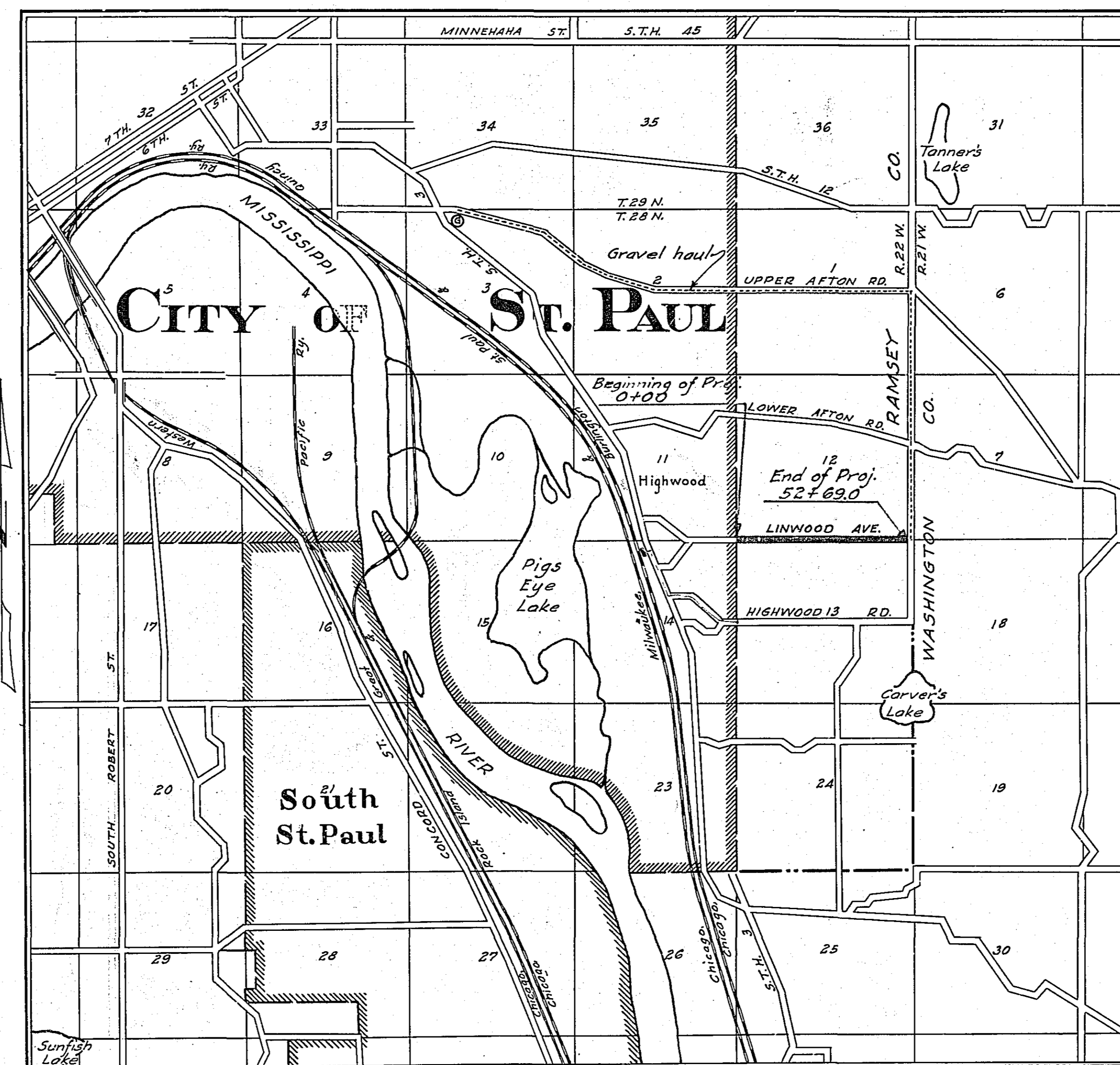
GROSS LENGTH 5269.00 FEET 0.998 MILES
 LENGTH OF EXCEPTIONS 0.00 FEET 0.00 MILES
 NET LENGTH 5269.00 FEET 0.998 MILES
 PLAN, 1 Inch = 200 Feet
 PROFILE, Horz. 1 Inch = 200 Feet. Vert. 1 Inch = 20 Feet
 WORKING PLANS { Horz. 1 Inch = 100 Feet
 Vert. 1 Inch = 10 Feet
 Cross-Sections, 1 Inch = 10 Feet

LAYOUT

SCALE, 1 Inch = 3522. Feet

INDEX OF SHEETS

Sheet No. 1. Title Sheet and Layout Map
 " No. 2. Typical Cross-Sections and Statement
 " No. 3. Plan and Profile, Sta. 0+00.0 to Sta. 52+69.0
 " No. 4. to 8. inc. Cross Sections



Note: Gravel hauled from City of St. Paul gravel pit at intersection of Burns Ave. and Point Douglas Rd. 5.07 Miles from center of project.



Office of Ramsey Co. Engineer
 ST. PAUL, MINN.
 Date Filed 2-28-28
 File No. D

Date of Resolution for Preparation of Plans September 6, 1927

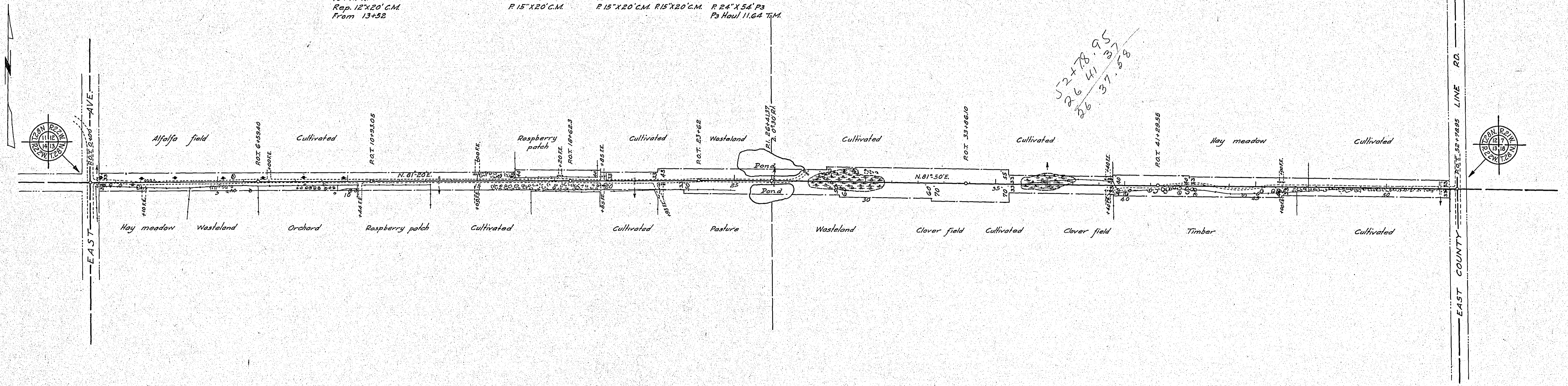
Planned by *C. J. [Signature]*
 ASSISTANT ENGINEER

Recommended for Approval *Wm. MacLennan*
 CONSTRUCTION ENGINEER

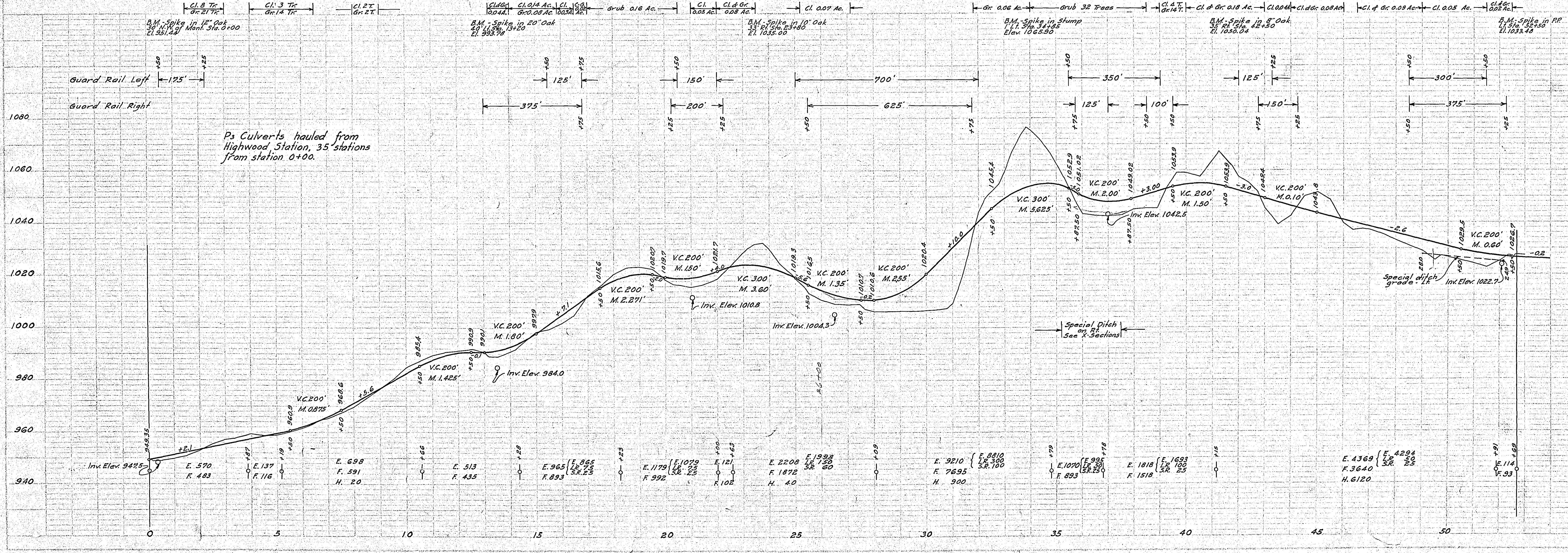
Plans Approved and Recommended for Consideration *Paul J. [Signature]*
 COUNTY SURVEYOR

Approved by County Board *J. C. [Signature]*
 CHAIRMAN OF COUNTY BOARD

0+30 P 24' X 36' P3 P3 Haul 4.45 T.M.
 2+10 R. P 15' X 20' C.M.
 7+00 L. No Culv. reqd.
 13+52 Inp. 12' X 20' C.M. Rem. H. to 10+44 P 24' X 48' P3 P3 Haul 8.16 T.M.
 15+00 R. Rep. 12' X 20' C.M. From 13+52
 15+00 L. P 15' X 20' C.M.
 18+20 L. Rep. 12' X 20' C.M. From 21-01
 21-01 Inp. 12' X 20' C.M. Rem. H. to 18+20 P 24' X 54' P3 P3 Haul 10.60 T.M.
 22+10 R. Rep. 12' X 20' C.M. From 27+62
 27+62 L. Inp. 12' X 20' C.M. Rem. H. to 22+10
 37+00 P 24' X 48' P3 P 15' X 20' C.M. P3 Haul 12.11 T.M.
 39+40 R. P 15' X 20' C.M.
 39+40 L. P 15' X 20' C.M.
 43+50 No Culv. reqd.
 46+00 R. P 15' X 20' C.M.
 46+00 L. P 15' X 20' C.M.
 52+10 P 24' X 42' P3 P3 Haul 12.82 T.M.



Handwritten note: $52+78.95$
 856
 41.95
 37.58



LINWOOD AVE.
PROJ. 28-76
 ESTIMATED QUANTITIES

Clearing	Trees	17
Clearing	Scrubbing	83
Clearing	Acres	0.89
Grubbing		0.81
Exc. Earth	C.Y.	21887
	L.R.	800
	S.R.	285
	D.M.	7080
Install 15 CM Lin Ft.		160
	24' Ps	282
P3 Haul	T.M.	59.78
Rem. Old Culv. Lin Ft.		60
Rep.		60
Guard Rail - Cable		3875
	Anchors Each	28

Handwritten note: 5308

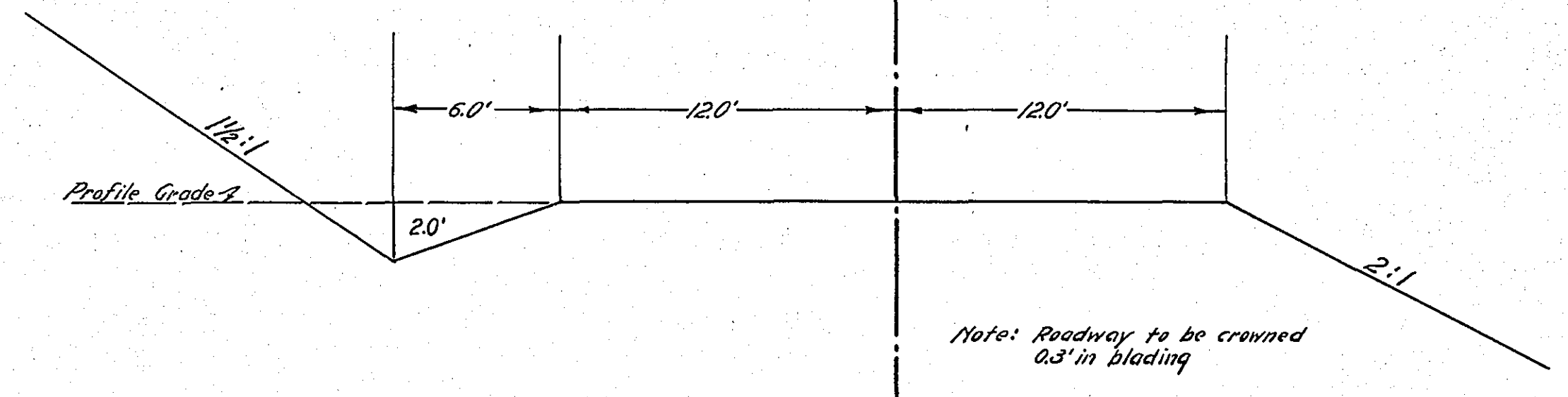
STATEMENT OF ESTIMATED QUANTITIES AND COSTS.

ITEM	UNIT	MILE														TOTAL ESTIMATED QUANTITIES	ESTIMATED UNIT PRICES	AMOUNTS	TOTALS	
		ONE Sta. 0+00 to Sta. 52+69.0	MILE Sta. to Sta.	MILE Sta. to Sta.	MILE Sta. to Sta.	MILE Sta. to Sta.	MILE Sta. to Sta.	MILE Sta. to Sta.	MILE Sta. to Sta.	MILE Sta. to Sta.	MILE Sta. to Sta.	MILE Sta. to Sta.	MILE Sta. to Sta.	MILE Sta. to Sta.	MILE Sta. to Sta.					
1	Clearing	Acre	0.28															0.28		
2	Clearing	Tree	17															17		
3	Grubbing	Acre	0.28															0.28		
4	Grubbing	Tree	83															83		
5	Excavation - Earth	Cu. Yd.	21,887															21,887		
6	Excavation - Loose Rock	Cu. Yd.	800															800		
7	Excavation - Solid Rock	Cu. Yd.	285															285		
8	Excavation - Overhaul	Cu. Yd.	7080															7080		
9	Special Excavation	Lin. Ft.																		
10	Hand Ditching	Cu. Yd.																		
11	Tile Drain	in. Lin. Ft.																		
12	Tile Drain	in. Lin. Ft.																		
13	Tile Drain	in. Lin. Ft.																		
14	Porous Back Fill Material	Cu. Yd.																		
15	Stone Rip - Rap	Cu. Yd.																		
16	Stones Drain Material	Cu. Yd. mile																		
17	Install	15" C.M. Lin. Ft.	160															160		
18	Install	15" C.M. Lin. Ft.																		
19	Install	15" C.M. Lin. Ft.																		
20	Install	15" C.M. Lin. Ft.																		
21	Install	15" C.M. Lin. Ft.																		
22	Install	15" C.M. Lin. Ft.																		
23	Install	15" C.M. Lin. Ft.																		
24	Install	15" C.M. Lin. Ft.																		
25	Install 24" P3	Lin. Ft.	282															282		
26	Install 30" P3	Lin. Ft.																		
27	Install 36" P3	Lin. Ft.																		
28	P1 Culvert Haul	Ton Mile																		
29	P3 Culvert Haul	Ton Mile	59.78															59.78		
30	Remove Old Culv.	Lin. Ft.	60															60		
31	Replace Old Culv.	Lin. Ft.	60															60		
32																				
TOTAL ESTIMATED COST OF GRADING			(IN 'TOTALS' COLUMN)																	
33	Culv. Material	Lin. Ft.																		
34	Culv. Material	Lin. Ft.																		
35	Culv. Material	Lin. Ft.																		
36	Culv. Material	Lin. Ft.																		
37	C.M. Culv. Material 15"	Lin. Ft.	160															160		
38	Culv. Material	Lin. Ft.																		
39	P3 Culv. Material 24"	Lin. Ft.	282															282		
40	P3 Culv. Material 30"	Lin. Ft.																		
41	P3 Culv. Material 36"	Lin. Ft.																		
TOTAL ESTIMATED COST OF PORTABLE CULVERT MATERIAL			(IN 'TOTALS' COLUMN)																	
42	Gravel Pit Stripping	Cu. Yd.																		
43	Screening	Cu. Yd.	800															800		
44	Loading	Cu. Yd.	800															800		
45	Hauling	Cu. Yd. Mile	4056															4056		
46	Shaping & Compacting	Man Hour	50.59															50.59		
47	Shaping & Compacting	Man & Team Hour	117.59															117.59		
48																				
49																				
50																				
51																				
TOTAL ESTIMATED COST OF GRAVEL HAUL			(IN 'TOTALS' COLUMN)																	
52	Gravel Material F. O. B. Pit	Cu. Yd.																		
53	Freight (If any)	Cu. Yd.																		
54	Unloading from Cars	Cu. Yd.																		
TOTAL ESTIMATED COST OF GRAVEL MATERIAL			(IN 'TOTALS' COLUMN)																	
55	Fine Grading - Exc. & Emb.	Cu. Yd.																		
56	Shoulders - Earth	Cu. Yd.																		
57																				
58																				
59	Pavement	Sq. Yd.																		
60	Integral Curb (One Course Concrete)	Lin. Ft.																		
61	Sloping Curb	Lin. Ft.																		
62	Surface Drain	Lin. Ft.																		
63	Surface Drain Basins	Basin																		
64	Bridge Approach Slabs (sewer)	Slab																		
65	Bridge Approach Slabs (storm)	Slab																		
66																				
67																				
68																				
TOTAL ESTIMATED COST OF PAVEMENT CONSTRUCTION			(IN 'TOTALS' COLUMN)																	
69	Concrete	Cu. Yd.																		
70	Reinforcing Steel	Lb.																		
71	Excavation - Earth	Cu. Yd.																		
72	Excavation - Loose Rock	Cu. Yd.																		
73	Excavation - Solid Rock	Cu. Yd.																		
74	Bridge	* Bridge No.																		
75	Station																			
76	Concrete	Cu. Yd.																		
77	Reinforcing Steel	Lb.																		
78	Structural Steel	Lb.																		
79	Piling	Lin. Ft.																		
80	Temporary Crossing	Lump Sum																		
81	Removing old Bridge	Lump Sum																		
82	Bituminous Surface	Sq. Yd.																		
83																				
84																				
TOTAL ESTIMATED COST OF STRUCTURES			(IN 'TOTALS' COLUMN)																	
85	Guard Rail - Cable	Lin. Ft.	3875															3875		
86	Guard Rail Anchors	Each	28															28		
87	Excavation for Gutter	Cu. Yd.																		
TOTAL ESTIMATED COST OF MISCELLANEOUS ITEMS			(IN 'TOTALS' COLUMN)																	

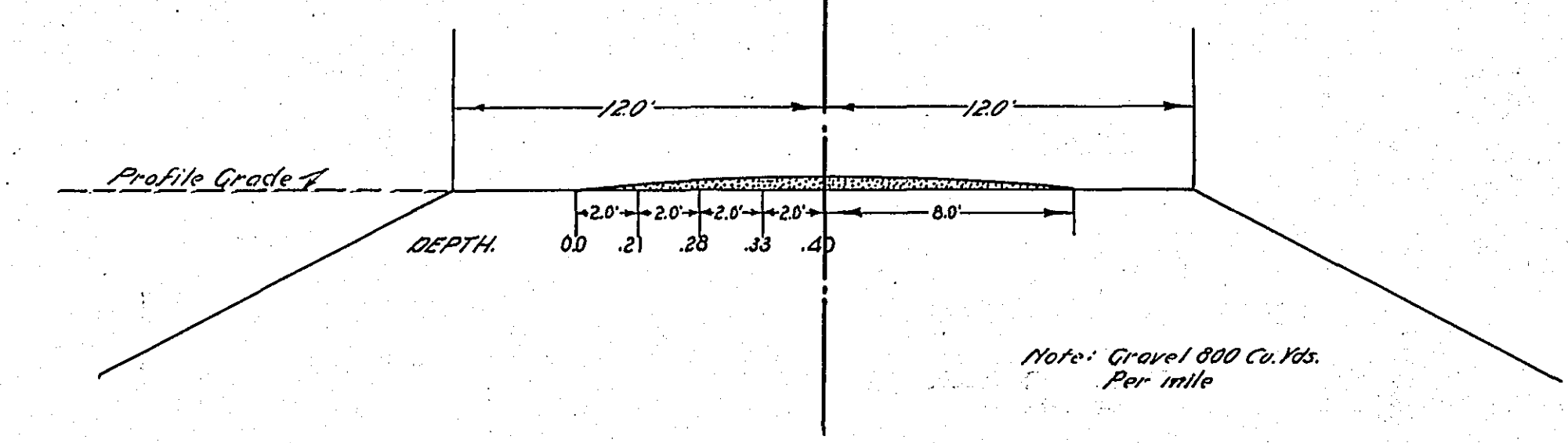
TYPICAL CROSS SECTIONS AND DETAILS

FED. ROAD DIST. No.	STATE	FED. AID PROJ. No.	SEC.	FISCAL YEAR	SHEET No.	TOTAL SHEETS
4	MINN.					

PROJ. 28-76
GRADING SECTION



GRAVEL SECTION



* NOTE: BRIDGE ITEMS LISTED UNDER BRIDGE NUMBERS IN MILE COLUMNS REGARDLESS OF LOCATION

5305