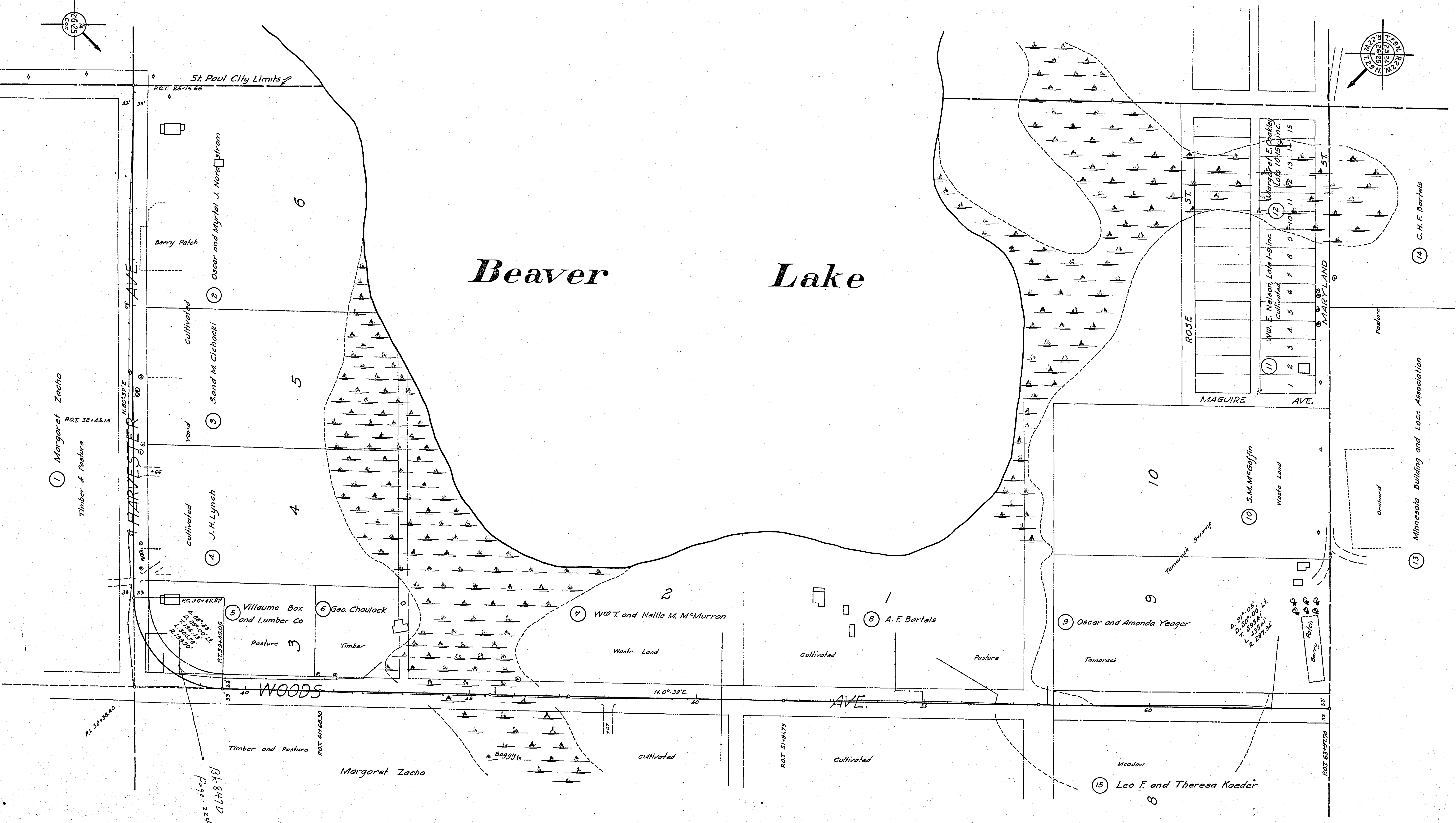


# Beaver Lake

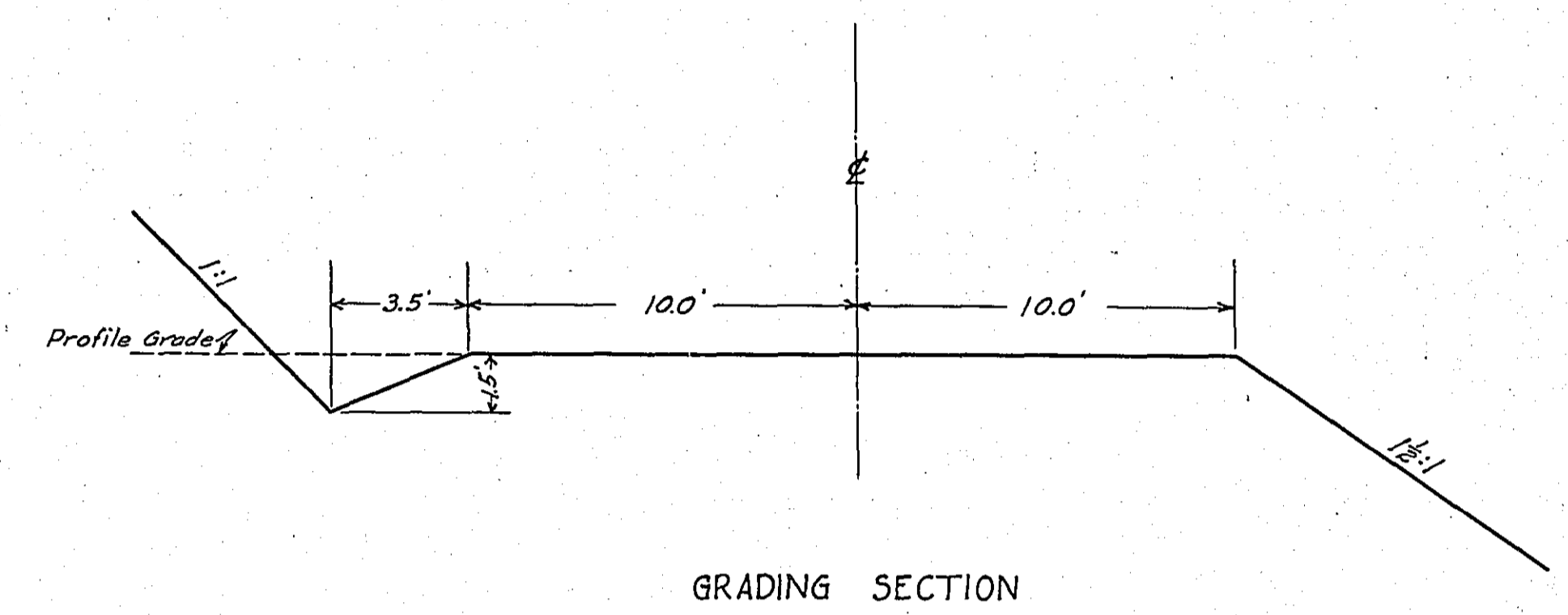


STATEMENT OF ESTIMATED QUANTITIES AND COSTS.

ITEM	UNIT	MILE		MILE		MILE		MILE		MILE		MILE		MILE		TOTAL ESTIMATED QUANTITIES	ESTIMATED UNIT PRICES	AMOUNTS	TOTALS
		Sta.	to Sta.	Sta.	to Sta.	Sta.	to Sta.	Sta.	to Sta.	Sta.	to Sta.	Sta.	to Sta.	Sta.	to Sta.				
1	Clearing	Acre																	
2	Clearing	Tree	74													74			
3	Grubbing	Acre																	
4	Grubbing	Tree	136													136			
5	Excavation - Earth	Cu. Yd.	6484													6484			
6	Excavation - Loose Rock	Cu. Yd.	30													30			
7	Excavation - Solid Rock	Cu. Yd.	15													15			
8	Excavation - Overhaul	Cu. Yd.	4749													4749			
9	Special Excavation	Lin. Ft.																	
10	Hand Ditching	Cu. Yd.	297													297			
11	Tile Drain	in. Lin. Ft.																	
12	Tile Drain	in. Lin. Ft.																	
13	Tile Drain	in. Lin. Ft.																	
14	Porous Back Fill Material	Cu. Yd.																	
15	Stone Rip - Rap	Cu. Yd.																	
16	Hauling Rip-Rap or Stone Drain Material	Cu. Yd. mile																	
17	Install 12" C.M.	Lin. Ft.	20													20			
18	Install 15" C.M.	Lin. Ft.	56													56			
19	Install 36" C.M.	Lin. Ft.	52													52			
20	Install	Lin. Ft.																	
21	Install	Lin. Ft.																	
22	Install	Lin. Ft.																	
23	Install	Lin. Ft.																	
24	Install	Lin. Ft.																	
25	Install 24" P <sub>3</sub>	Lin. Ft.																	
26	Install 30" P <sub>3</sub>	Lin. Ft.																	
27	Install 36" P <sub>3</sub>	Lin. Ft.																	
28	P <sub>1</sub> Culvert Haul	Ton Mile																	
29	P <sub>3</sub> Culvert Haul	Ton Mile																	
30	Rem. old Culv.	Lin. Ft.	82													82			
31	Rep. " "	" "	82													82			
32																			
TOTAL ESTIMATED COST OF GRADING (IN 'TOTALS' COLUMN)																			
33	C.M. Culv. Material 12"	Lin. Ft.	20													20			
34	C.M. Culv. Material 15"	Lin. Ft.	56													56			
35	C.M. Culv. Material 36"	Lin. Ft.	52													52			
36	Culv. Material	Lin. Ft.																	
37	Culv. Material	Lin. Ft.																	
38	Culv. Material	Lin. Ft.																	
39	P <sub>3</sub> Culv. Material 24"	Lin. Ft.																	
40	P <sub>3</sub> Culv. Material 30"	Lin. Ft.																	
41	P <sub>3</sub> Culv. Material 36"	Lin. Ft.																	
TOTAL ESTIMATED COST OF PORTABLE CULVERT MATERIAL (IN 'TOTALS' COLUMN)																			
42	Gravel Pit Stripping	Cu. Yd.																	
43	Screening	Cu. Yd.																	
44	Loading	Cu. Yd.																	
45	Hauling	Cu. Yd. Mile																	
46	Shaping & Compacting	Man Hour																	
47	Shaping & Compacting	Man & Team Hour																	
48																			
49																			
50																			
51																			
TOTAL ESTIMATED COST OF GRAVEL HAUL (IN 'TOTALS' COLUMN)																			
52	Gravel Material F. O. B. Pit	Cu. Yd.																	
53	Freight (If any)	Cu. Yd.																	
54	Unloading from Cars	Cu. Yd.																	
TOTAL ESTIMATED COST OF GRAVEL MATERIAL (IN 'TOTALS' COLUMN)																			
55	Fine Grading - Exc. & Emb.	Cu. Yd.																	
56	Shoulders - Earth	Cu. Yd.																	
57																			
58																			
59	Pavement	Sq. Yd.																	
60	Integral Curb (Concrete)	Lin. Ft.																	
61	Sloping Curb	Lin. Ft.																	
62	Surface Drain	Lin. Ft.																	
63	Surface Drain Basins	Basin																	
64	Bridge Approach Slabs (Square)	Slab																	
65	Bridge Approach Slabs (Kew)	Slab																	
66																			
67																			
68																			
TOTAL ESTIMATED COST OF PAVEMENT CONSTRUCTION (IN 'TOTALS' COLUMN)																			
69	Concrete	Cu. Yd.																	
70	Reinforcing Steel	Lb.																	
71	Excavation - Earth	Cu. Yd.																	
72	Excavation - Loose Rock	Cu. Yd.																	
73	Excavation - Solid Rock	Cu. Yd.																	
74	Bridge	* Bridge No.	Br. No.	Br. No.	Br. No.	Br. No.	Br. No.	Br. No.	Br. No.	Br. No.	Br. No.	Br. No.	Br. No.	Br. No.	Br. No.	Br. No.	Br. No.	Br. No.	Br. No.
75	Station																		
76	Concrete	Cu. Yd.																	
77	Reinforcing Steel	Lb.																	
78	Structural Steel	Lb.																	
79	Piling	Lin. Ft.																	
80	Temporary Crossing	Lump Sum																	
81	Removing old Bridge	Lump Sum																	
82	Bituminous Surface	Sq. Yd.																	
83																			
84																			
TOTAL ESTIMATED COST OF STRUCTURES (IN 'TOTALS' COLUMN)																			
85	Guard Rail	Lin. Ft.																	
86	Gutter	Lin. Ft.																	
87	Excavation for Gutter	Cu. Yd.																	
TOTAL ESTIMATED COST OF MISCELLANEOUS ITEMS (IN 'TOTALS' COLUMN)																			

TYPICAL CROSS SECTIONS AND DETAILS

FED. ROAD DIST. NO.	STATE	FED. AID PROJ. NO.	SEC.	FISCAL YEAR	SHEET NO.	TOTAL SHEETS
4	MINN.					

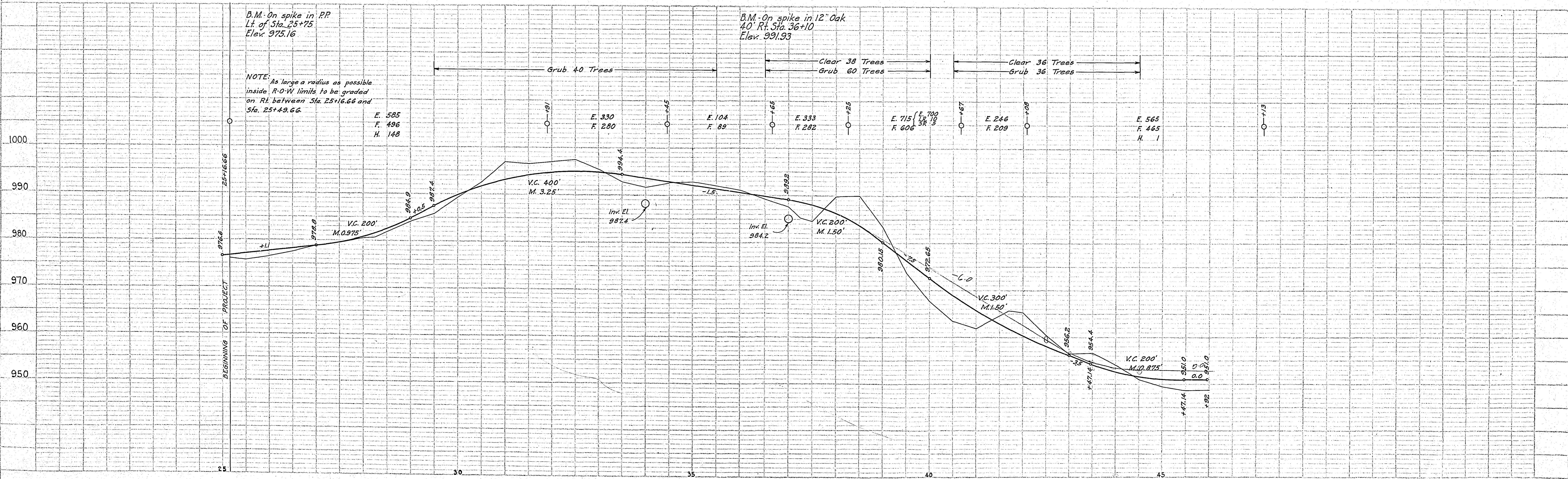
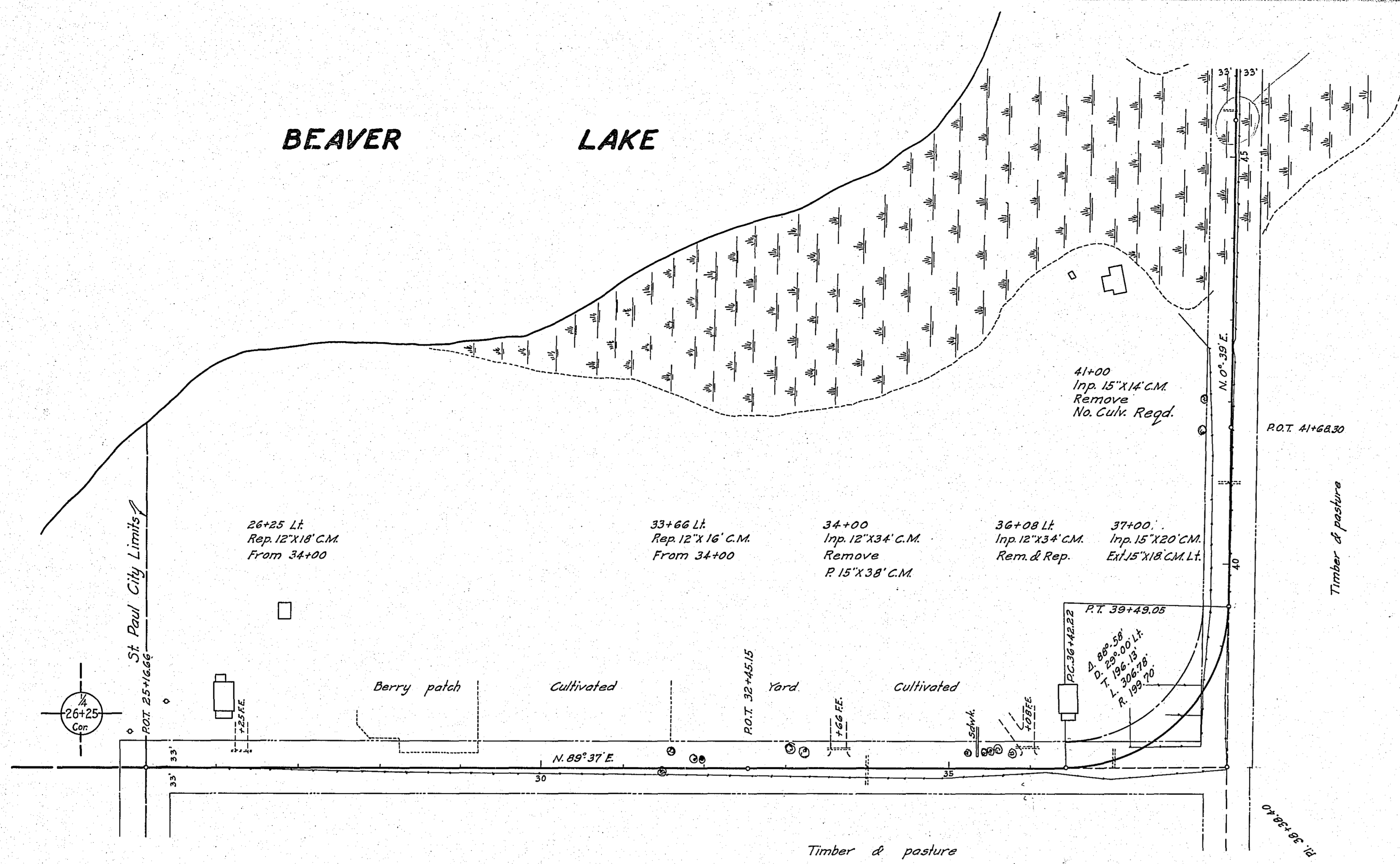


\* NOTE: BRIDGE ITEMS LISTED UNDER BRIDGE NUMBERS IN MILE COLUMNS REGARDLESS OF LOCATION

DATE	
BY	
PLANNED	
DESIGNED	
CHECKED	
APPROVED	
NO.	

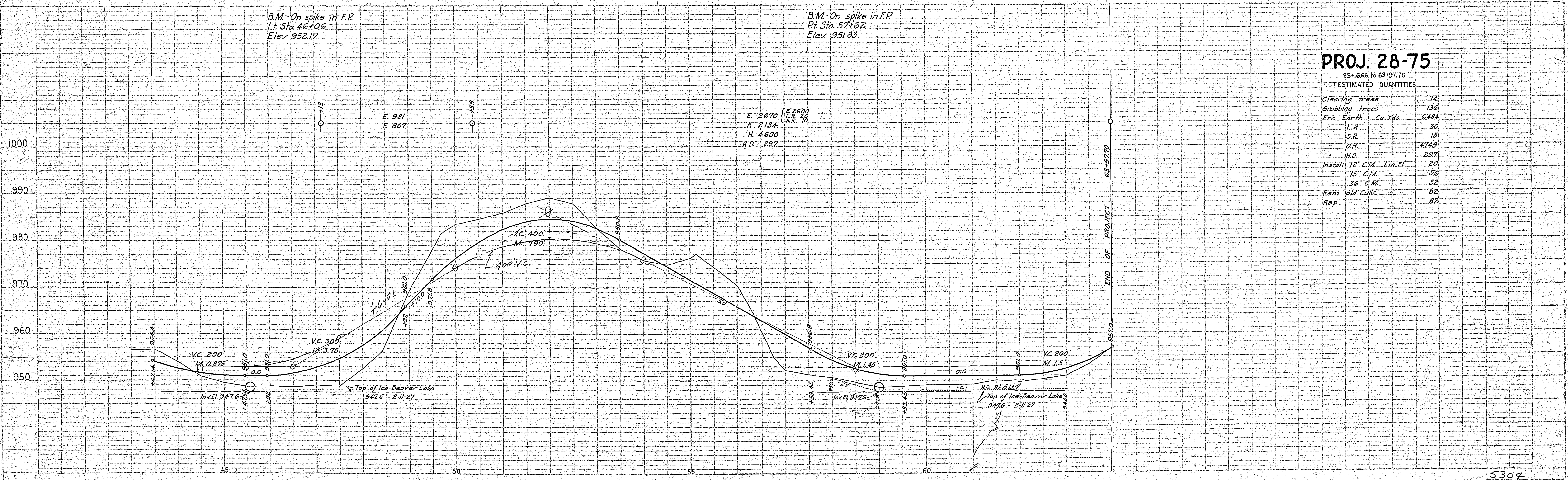
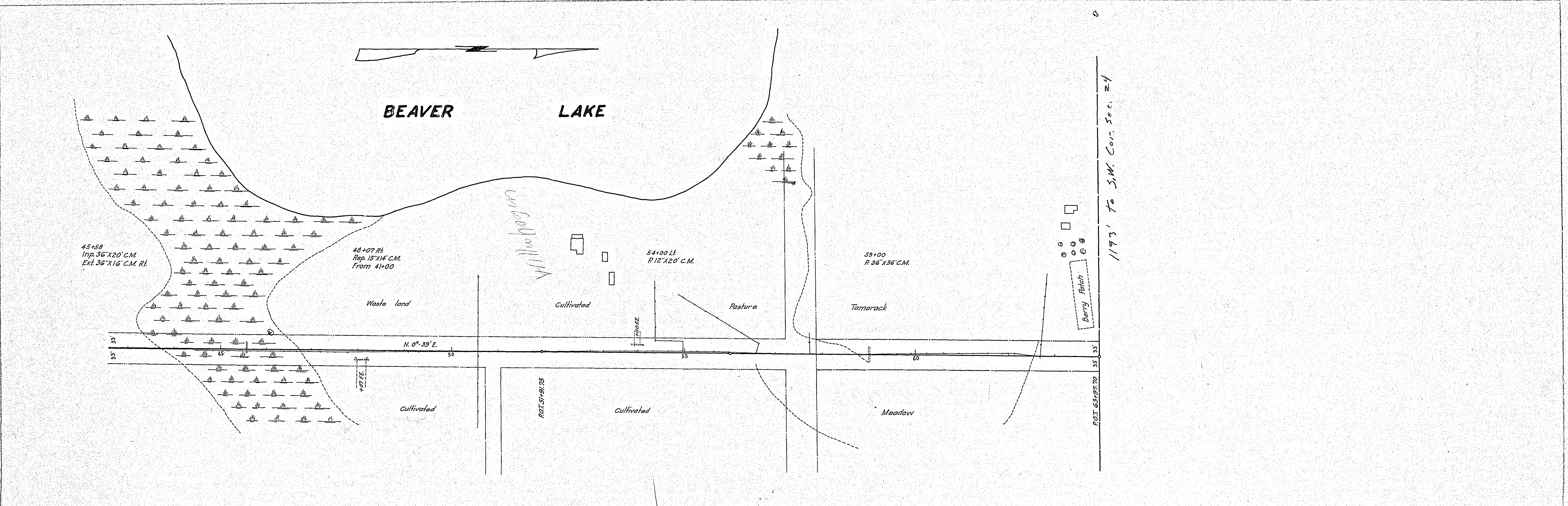
DATE	
BY	
PLANNED	
DESIGNED	
CHECKED	
APPROVED	
NO.	

# BEAVER LAKE



PLAN	DATE
NO.	
REVISIONS	
1. AS NOTED	
2. AS NOTED	
3. AS NOTED	
4. AS NOTED	
5. AS NOTED	
6. AS NOTED	
7. AS NOTED	
8. AS NOTED	
9. AS NOTED	
10. AS NOTED	

PROFILE	DATE
NO.	
REVISIONS	
1. AS NOTED	
2. AS NOTED	
3. AS NOTED	
4. AS NOTED	
5. AS NOTED	
6. AS NOTED	
7. AS NOTED	
8. AS NOTED	
9. AS NOTED	
10. AS NOTED	



**PROJ. 28-75**  
25+16.66 to 63+97.70

EST. ESTIMATED QUANTITIES

Clearing trees	74
Grubbing trees	136
Exc. Earth Cu. Yds.	6494
" L.R.	30
" S.R.	15
" O.H.	4749
" H.D.	297
Install. 12" C.M. Lin. Ft.	20
" 15" C.M.	56
" 36" C.M.	52
Rem. old Culv.	82
Rep. "	82