

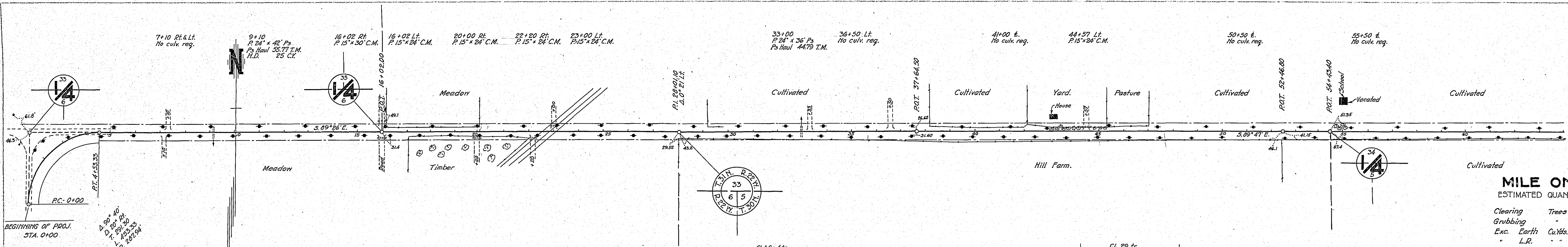
STATEMENT OF ESTIMATED QUANTITIES AND COSTS.

ITEM	UNIT	MILE 016		MILE 170		MILE		MILE		MILE		MILE		MILE		MILE		TOTAL ESTIMATED QUANTITIES	ESTIMATED UNIT PRICES	AMOUNTS	TOTALS
		Sta. 2102 to Sta. 63124	Sta. 63124 to Sta. 131534	Sta. to Sta.	Sta. to Sta.	Sta. to Sta.	Sta. to Sta.	Sta. to Sta.	Sta. to Sta.	Sta. to Sta.	Sta. to Sta.	Sta. to Sta.	Sta. to Sta.	Sta. to Sta.	Sta. to Sta.	Sta. to Sta.	Sta. to Sta.				
1	Clearing	Acre																			
2	Clearing	Tree	78	40																	126
3	Grubbing	Acre																			
4	Grubbing	Tree	123	58																	161
5	Excavation - Earth	Cu. Yd.	2833	8153																	17286
6	Excavation - Loose Rock	Cu. Yd.	50	50																	100
7	Excavation - Solid Rock	Cu. Yd.	25	25																	50
8	Excavation - Overhaul	Cu. Yd.	6235	3565																	9800
9	Special Excavation	Lin. Ft.																			
10	Hand Ditching	Cu. Yd.	25	15																	40
11	Title Drain	in. Lin. Ft.																			
12	Title Drain	in. Lin. Ft.																			
13	Title Drain	in. Lin. Ft.																			
14	Porous Back Fill Material	Cu. Yd.																			
15	Stone Rip - Rap	Cu. Yd.																			
16	Leaving Rip - Rap	Cu. Yd. mile																			
17	Install	Lin. Ft.																			
18	Install	Lin. Ft.																			
19	Install	Lin. Ft.																			
20	Install	Lin. Ft.																			
21	Install	Lin. Ft.																			
22	Install 15" C.M.	Lin. Ft.	150	120																	270
23	Install	Lin. Ft.																			
24	Install	Lin. Ft.																			
25	Install 24" P <sub>3</sub>	Lin. Ft.	78	174																	252
26	Install 30" P <sub>3</sub>	Lin. Ft.																			
27	Install 36" P <sub>3</sub>	Lin. Ft.																			
28	P <sub>1</sub> Culvert Haul	Ton Mile																			
29	P <sub>3</sub> Culvert Haul	Ton Mile	100.25	172.32																	272.57
30	Rem. old culv			34																	34
31																					
32																					
TOTAL ESTIMATED COST OF GRADING (IN 'TOTALS' COLUMN)																					
33	Culv. Material	Lin. Ft.																			
34	Culv. Material	Lin. Ft.																			
35	Culv. Material	Lin. Ft.																			
36	C.M. Culv. Material 15"	Lin. Ft.	150	120																	270
37	Culv. Material	Lin. Ft.																			
38	Culv. Material	Lin. Ft.																			
39	P <sub>3</sub> Culv. Material 24"	Lin. Ft.	78	174																	252
40	P <sub>3</sub> Culv. Material 30"	Lin. Ft.																			
41	P <sub>3</sub> Culv. Material 36"	Lin. Ft.																			
TOTAL ESTIMATED COST OF PORTABLE CULVERT MATERIAL (IN 'TOTALS' COLUMN)																					
42	Gravel Pit Stripping	Cu. Yd.																			600
43	Screening	Cu. Yd.	1440	1140																	2580
44	Loading	Cu. Yd.	1440	1140																	2580
45	Hauling	Cu. Yd. Mile	4322	2257																	6579
46	Shaping & Compacting	Man Hour	91	72																	163
47	Shaping & Compacting	Max. & Trans. Hour	212	167																	379
48																					
49																					
50																					
51																					
TOTAL ESTIMATED COST OF GRAVEL HAUL (IN 'TOTALS' COLUMN)																					
52	Gravel Material F. O. B. Pit	Cu. Yd.																			
53	Freight (If any)	Cu. Yd.																			
54	Unloading from Cars	Cu. Yd.																			
TOTAL ESTIMATED COST OF GRAVEL MATERIAL (IN 'TOTALS' COLUMN)																					
55	Fine Grading - Earth & Emb.	Cu. Yd.																			
56	Shoulders - Earth	Cu. Yd.																			
57																					
58																					
59	Preparation	Cu. Yd.																			
60	Loading Clay	Cu. Yd.	280	364																	644
61	Hauling "	C.M.	84	273																	357
62	Shaping & Compacting	M.H.	18	23																	41
63	Shaping & Compacting	M.A.T.H.	41	53																	94
64																					
65	Bridge Approach Slab	Slab																			
66																					
67																					
68																					
TOTAL ESTIMATED COST OF CLAYING & CONSTRUCTION (IN 'TOTALS' COLUMN)																					
69	Concrete	Cu. Yd.																			
70	Reinforcing Steel	Lb.																			
71	Excavation - Earth	Cu. Yd.																			
72	Excavation - Loose Rock	Cu. Yd.																			
73	Excavation - Solid Rock	Cu. Yd.																			
74	Bridge	* Bridge No.	Br. No.	Br. No.	Br. No.	Br. No.	Br. No.	Br. No.	Br. No.	Br. No.	Br. No.	Br. No.	Br. No.	Br. No.	Br. No.	Br. No.	Br. No.	Br. No.	Br. No.	Br. No.	Br. No.
75	Station																				
76	Concrete	Cu. Yd.																			
77	Reinforcing Steel	Lb.																			
78	Structural Steel	Lb.																			
79	Piling	Lin. Ft.																			
80	Temporary Crossing	Lump Sum																			
81	Removing old Bridge	Lump Sum																			
82	Bituminous Surface	Sq. Yd.																			
83																					
84																					
TOTAL ESTIMATED COST OF STRUCTURES (IN 'TOTALS' COLUMN)																					
85	Guard Rail	Lin. Ft.																			
86	Gutter	Lin. Ft.																			
87	Excavation for Gutter	Cu. Yd.																			
TOTAL ESTIMATED COST OF MISCELLANEOUS ITEMS (IN 'TOTALS' COLUMN)																					

TYPICAL CROSS SECTIONS AND DETAILS

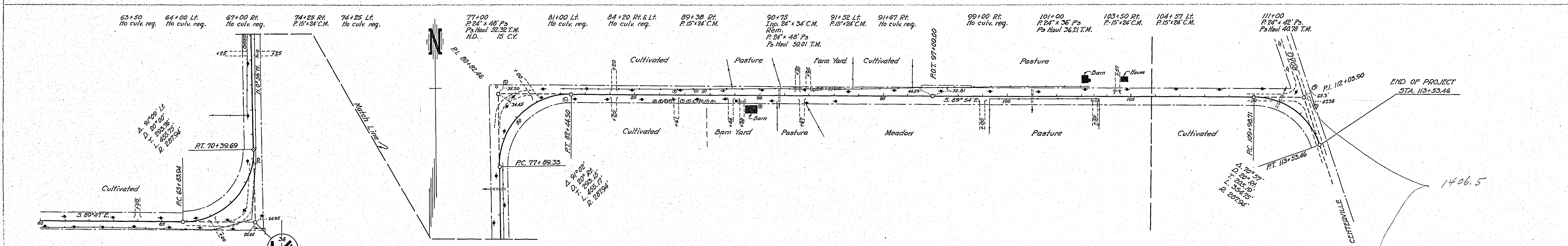
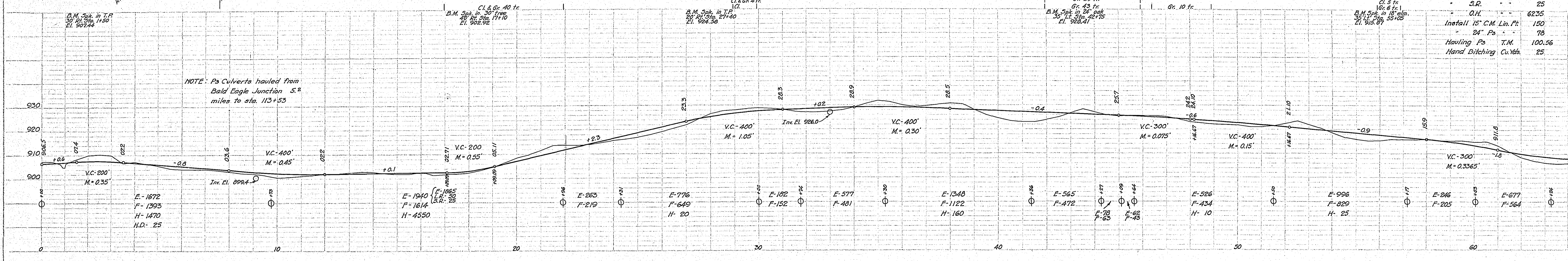
FED. ROAD DIST. NO.	STATE	FED. AID PROJ. NO.	SEC.	FISCAL YEAR	SHEET NO.	TOTAL
---------------------	-------	--------------------	------	-------------	-----------	-------





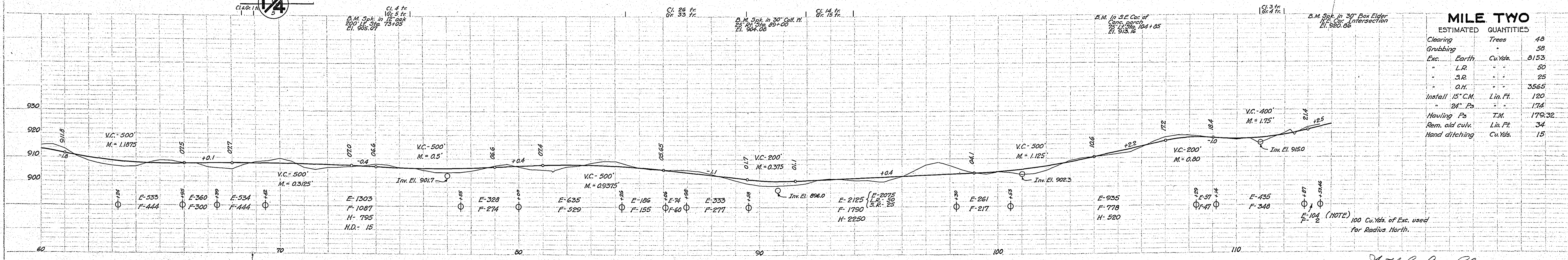
**MILE ONE**  
ESTIMATED QUANTITIES

Clearing	Trees	78
Grubbing		103
Exc. Earth	Cu.Yds.	9833
- L.R.		50
- S.R.		25
- O.H.		6235
Install 15" C.M. Lin. Ft.		150
- 24" Ps.		78
Hauling Ps	T.M.	100.56
Hand Ditching	Cu.Yds.	25



**MILE TWO**  
ESTIMATED QUANTITIES

Clearing	Trees	48
Grubbing		58
Exc. Earth	Cu.Yds.	8153
- L.R.		50
- S.R.		25
- O.H.		3565
Install 15" C.M. Lin. Ft.		120
- 24" Ps.		174
Hauling Ps	T.M.	179.32
Rem. old culv.	Lin. Ft.	34
Hand ditching	Cu.Yds.	15



PLAN  
DATE: 10/1/63  
BY: J. R. BROWN  
CHECKED: J. R. BROWN  
SCALE: AS SHOWN

PROFILE  
DATE: 10/1/63  
BY: J. R. BROWN  
CHECKED: J. R. BROWN  
SCALE: AS SHOWN