

Road Map  
Hodgson Road Connection  
From County Rd 62 To NE Cor. Sec 14

CONVENTIONAL SIGNS & ABBREVIATIONS

STATE LINE	-----	EXCAVATION	-----	E
COUNTY LINE	-----	EMBANKMENT	-----	F
TOWNSHIP LINE	-----	OVERHAUL	-----	H
SECTION LINE	-----	SURFACING	-----	S
CITY, VILLAGE, OR BOROUGH	-----	GUARD RAIL	-----	GR
FENCE LINE	-----	INTERSECTION ANGLE	-----	A
RIGHT-OF-WAY LINE	-----	RADIUS	-----	R
TRAVELLED WAY	-----	ELEVATION	-----	Ei
RAILROADS	-----	VERTICAL CURVE	-----	VC
RETAINING WALL	-----	BENCH MARK	-----	B.M.
BASE OR SURVEY LINE	-----	SECTIONAL CONCRETE CULVERT	-----	P.C.
LEVÉE	-----	CORRUGATED METAL CULVERT	-----	C.M.
GRAVEL PIT	-----	CULVERT HAUL	-----	P.L.H.
SAND PIT	-----	TON MILES	-----	T.M.
CLAY PIT	-----	PLACE	-----	P
ROCK QUARRY	-----	IN PLACE	-----	Imp
CULVERTS	-----	REPLACE	-----	Rep
PLAIN	-----	RIGHT	-----	R
WITH FACEWALLS	-----	LEFT	-----	L
WITH WINGWALLS	-----	HAND DITCHING	-----	H.D.
DROP INLET	-----	POINT OF CURVE	-----	P.C.
POWER POLE LINE	-----	POINT OF TANGENT	-----	P.T.
TELEPHONE OR TELEGRAPH LINE	-----	POINT OF INTERSECTION	-----	P.I.
MARSH	-----	SPECIAL EXCAVATION	-----	S.E.
HEDGE, BRUSH, OR TIMBER	-----	SPECIAL FLOWING	-----	S.P.
GROUND ELEVATION	-----	TELEPHONE POLE	-----	Tel.P.
GRADE ELEVATION	-----			

STATE HIGHWAY DEPARTMENT  
OF MINNESOTA  
Plan and Profile of State Road No.   1  

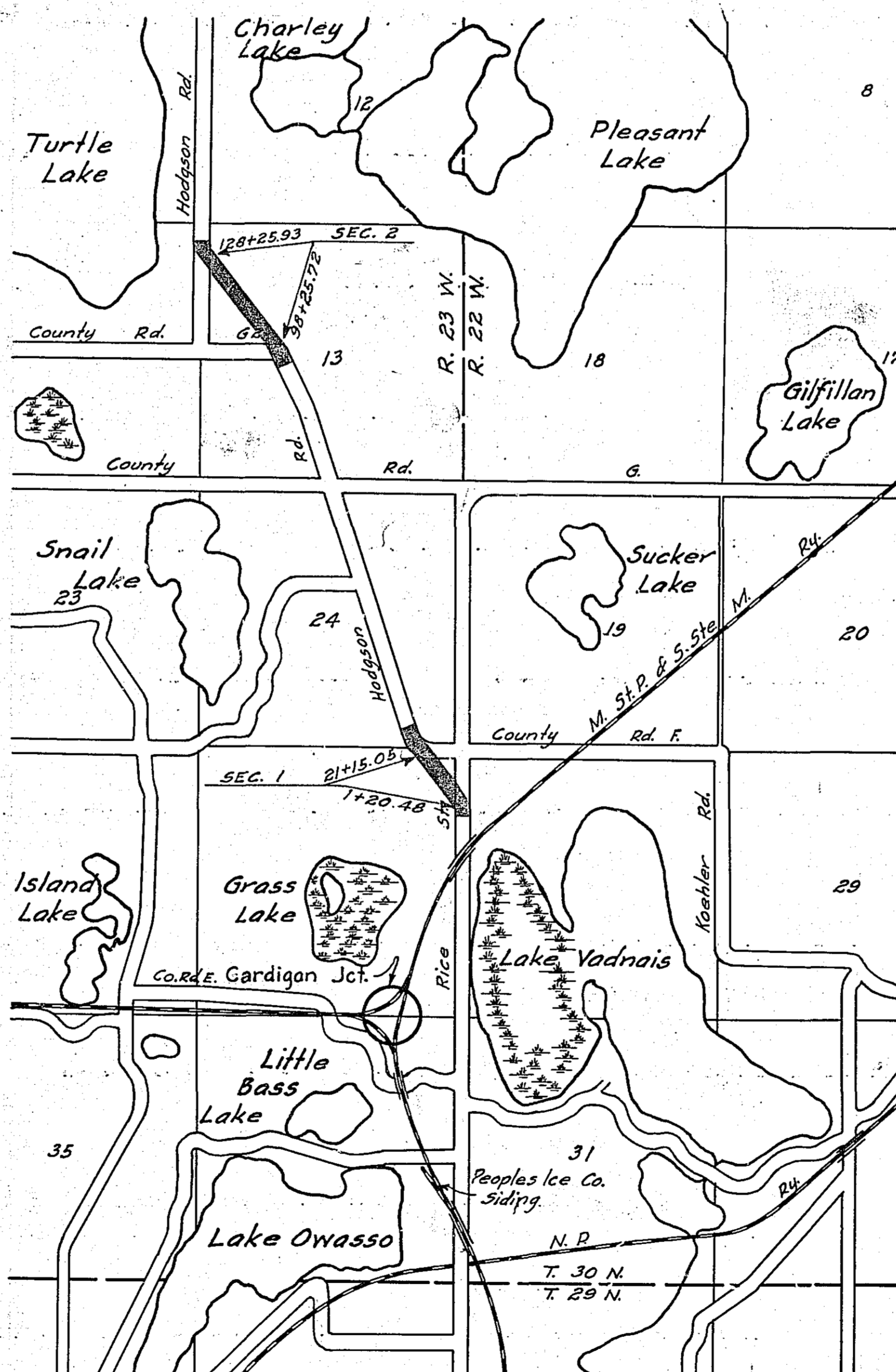
COUNTY OF   RAMSEY    
From A point 1132.63' So. of N.E. Cor. Sec. 25-30-23 To A point 1149.0' W. and 442' N. of N.E. Cor. Sec. 25-30-23  
Give proper reference to Sections, Township and Range

GROSS LENGTH <sup>Sec 1-1970.05</sup> ----- FEET <sup>0.35</sup> ----- MILES  
LENGTH OF EXCEPTIONS ----- FEET ----- MILES  
NET LENGTH 4870.26 FEET 0.22 MILES  
PLAN, 1 Inch = 100 Feet  
PROFILE, Horz. 1 Inch = 100 Feet. Vert. 1 Inch = 10 Feet  
WORKING PLANS (Horz. 1 Inch = 100 Feet. Vert. 1 Inch = 10 Feet)  
Cross-Sections, 1 Inch = 10 Feet

LAYOUT  
SCALE, 1 Inch = 2640 Feet

INDEX OF SHEETS

Sheet No. 1. Title Sheet and Layout Map  
" No. 2. Typical Cross-Sections and Statement   Sec. 1    
" No. 3. " " "   Sec 2    
" No. 4. Plan and Profile Sta. 1+20.48 to Sta. 21+15.05  
" No. 5. " " " 98+25.72 " 128+25.93  
" No. 6, 7, 8 Cross Sections.  
" No. 9 Cross Sections of clay pit.



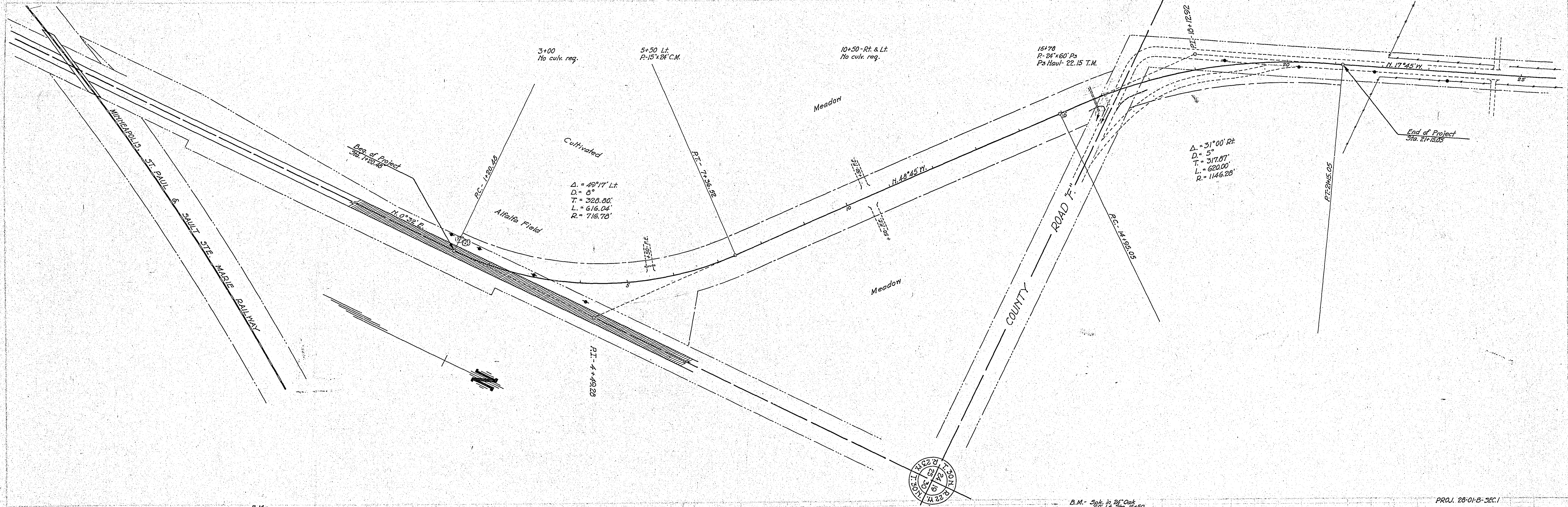
Clay hauled from road R.O.W. of County Road 'A', 1000 ft. West of Lexington Ave. 2.82 miles to Station 11+80 - Sec. 1. 2.44 miles to Station 113+25.82 - Sec. 2.

Gravel hauled from Indykiewicz pit on Hamline Ave. 1/2 mile south of County Road 1. 4.65 miles to Sta. 11+80 - Sec. 1. 4.27 miles to Sta. 113+26 Sec. 2.

RECEIVED FIRST	9/19/37	W.C.
RETURNED TO ENG'G		
RECEIVED SECOND		
TO DIVISION ENG'G		
APPROVED		
FROM OFFICE ENG'G		
FILED		

Planned by R.J. Wolfgang & Pro  
PRINCIPAL ASSISTANT ENGINEER FOR   RAMSEY   COUNTY.  
Recommended for Approval \_\_\_\_\_ DIVISION ENGINEER  
Recommended for Approval W.P. Chapman  
Asst. CONSTRUCTION ENGINEER  
Approved Mar 10 192 E.H. Peterson  
CHIEF ENGINEER & DEPUTY COMMISSIONER

T.H. 49

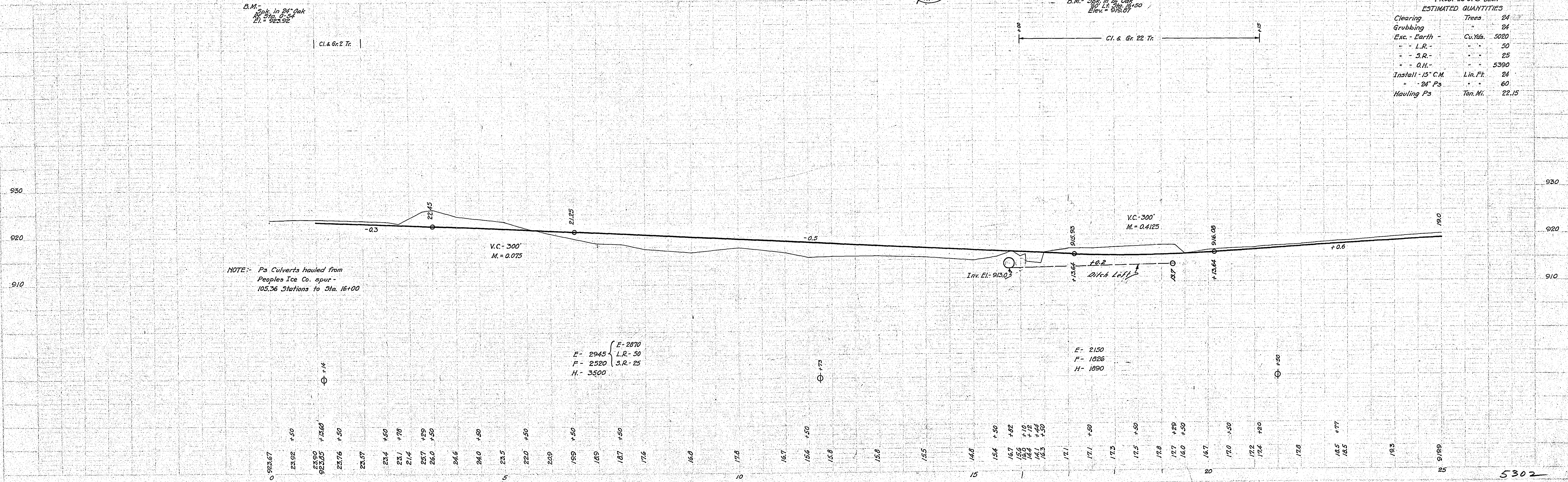


B.M. Spk. in 24" Oak  
Sta. 105.36  
Elev. = 925.92

B.M. Spk. in 24" Oak  
Sta. 105.36  
Elev. = 918.87

PROJ. 28-01-B-SEC.1  
ESTIMATED QUANTITIES

Clearing	Trees	24
Grubbing	"	24
Exc. - Earth	Cu. Yds.	5020
- L.R.	"	50
- S.R.	"	25
- O.H.	"	5390
Install - 15" C.M.	Lin. Ft.	24
- 24" Ps	"	60
Hauling Ps	Ton. Mi.	22.15



NOTE: Ps Culverts hauled from Peoples Ice Co. spur - 105.36 Stations to Sta. 16+00

E- 2945 L.R.- 50  
F- 2520 S.R.- 25  
H- 3500

E- 2150  
F- 1026  
H- 1890

STATEMENT OF ESTIMATED QUANTITIES AND COSTS.

ITEM	UNIT	MILE SEC. 1 Sta. 2+45 to Sta. 2+15.05	MILE		MILE		MILE		MILE		MILE		MILE		MILE		TOTAL ESTIMATED QUANTITIES	ESTIMATED UNIT PRICES	AMOUNTS	TOTALS
			Sta.	to Sta.	Sta.	to Sta.	Sta.	to Sta.	Sta.	to Sta.	Sta.	to Sta.	Sta.	to Sta.	Sta.	to Sta.				
1	Clearing	Acre																		
2	Clearing	Tree	24														24			
3	Grubbing	Acre																		
4	Grubbing	Tree	24														24			
5	Excavation - Earth	Cu. Yd.	5020														5020			
6	Excavation - Loose Rock	Cu. Yd.	50														50			
7	Excavation - Solid Rock	Cu. Yd.	25														25			
8	Excavation - Overhaul	Cu. Yd.	5390														5390			
9	Special Excavation	Lin. Ft.																		
10	Hand Ditching	Cu. Yd.																		
11	Tile Drain	in.																		
12	Tile Drain	in.																		
13	Tile Drain	in.																		
14	Porous Back Fill Material	Cu. Yd.																		
15	Stone Rip - Rap	Cu. Yd.																		
16	Heaving Rip-Rap or Stone Drain Material	Cu. Yd. mile																		
17	Install	Lin. Ft.																		
18	Install	Lin. Ft.																		
19	Install	Lin. Ft.																		
20	Install	Lin. Ft.																		
21	Install	Lin. Ft.																		
22	Install	Lin. Ft.																		
23	Install 15" C.M.	Lin. Ft.	24														24			
24	Install	Lin. Ft.																		
25	Install 24" P <sub>3</sub>	Lin. Ft.	60														60			
26	Install 30" P <sub>3</sub>	Lin. Ft.																		
27	Install 36" P <sub>3</sub>	Lin. Ft.																		
28	P <sub>1</sub> Culvert Haul	Ton Mile																		
29	P <sub>3</sub> Culvert Haul	Ton Mile	22 1/2														22 1/2			
30																				
31																				
32																				
TOTAL ESTIMATED COST OF GRADING (IN 'TOTALS' COLUMN)																				
33	Culv. Material	Lin. Ft.																		
34	Culv. Material	Lin. Ft.																		
35	Culv. Material	Lin. Ft.																		
36	C.M. Culv. Material 15"	Lin. Ft.	24														24			
37	Culv. Material	Lin. Ft.																		
38	Culv. Material 24"	Lin. Ft.																		
39	P <sub>3</sub> Culv. Material 24"	Lin. Ft.	60														60			
40	P <sub>3</sub> Culv. Material 30"	Lin. Ft.																		
41	P <sub>3</sub> Culv. Material 36"	Lin. Ft.																		
TOTAL ESTIMATED COST OF PORTABLE CULVERT MATERIAL (IN 'TOTALS' COLUMN)																				
42	Gravel Pit Stripping	Cu. Yd.	40														40			
43	Screening	Cu. Yd.	420														420			
44	Loading	Cu. Yd.	420														420			
45	Hauling	Cu. Yd. Mile	195.3														195.3			
46	Shaping & Compacting	Man Hour	27														27			
47	Shaping & Compacting	Man & Team Hour	62														62			
48																				
49																				
50																				
51																				
TOTAL ESTIMATED COST OF GRAVEL HAUL (IN 'TOTALS' COLUMN)																				
52	Gravel Material F. O. B. Pit	Cu. Yd.																		
53	Freight (if any)	Cu. Yd.																		
54	Unloading from Cars	Cu. Yd.																		
TOTAL ESTIMATED COST OF GRAVEL MATERIAL (IN 'TOTALS' COLUMN)																				
55	Fine Grading - Exc. & Emb.	Cu. Yd.																		
56	Shoulders - Earth	Cu. Yd.																		
57																				
58	Stripping Clay Pit	Cu. Yd.	65														65			
59	Loading Clay	Cu. Yd.	203														203			
60	Hauling Clay	Cu. Yd. Mile	2546.48														2546.48			
61	Shaping & Compacting	Man Hrs.	57.93														57.93			
62	Shaping & Compacting	Man & Team Hrs.	132.43														132.43			
63	Surface Drain Basins	Each																		
64	Bridge approach Slabs concrete	Slab																		
65	Bridge approach Slabs curb	Slab																		
66																				
67																				
68																				
TOTAL ESTIMATED COST OF PAVING CONSTRUCTION (IN 'TOTALS' COLUMN)																				
69	Concrete	Cu. Yd.																		
70	Reinforcing Steel	Lb.																		
71	Excavation - Earth	Cu. Yd.																		
72	Excavation - Loose Rock	Cu. Yd.																		
73	Excavation - Solid Rock	Cu. Yd.																		
74	Bridge	* Bridge No.	Br. No.	Br. No.	Br. No.	Br. No.	Br. No.	Br. No.	Br. No.	Br. No.	Br. No.	Br. No.	Br. No.	Br. No.	Br. No.	Br. No.				
75	Station																			
76	Concrete	Cu. Yd.																		
77	Reinforcing Steel	Lb.																		
78	Structural Steel	Lb.																		
79	Piling	Lin. Ft.																		
80	Temporary Crossing	Lump Sum																		
81	Removing old Bridge	Lump Sum																		
82	Bituminous Surface	Sq. Yd.																		
83																				
84																				
TOTAL ESTIMATED COST OF STRUCTURES (IN 'TOTALS' COLUMN)																				
85	Guard Rail	Lin. Ft.																		
86	Gutter	Lin. Ft.																		
87	Excavation for Gutter	Cu. Yd.																		
TOTAL ESTIMATED COST OF MISCELLANEOUS ITEMS (IN 'TOTALS' COLUMN)																				

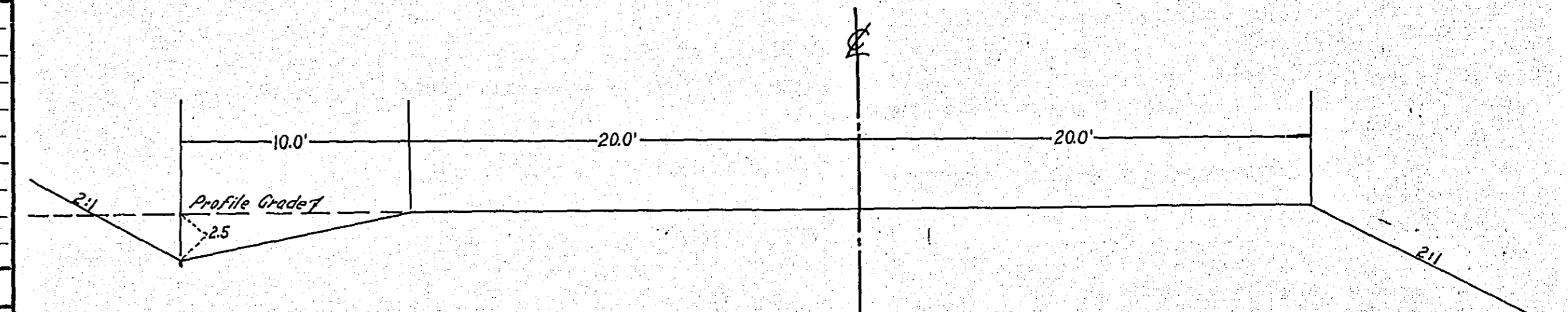
\* NOTE: BRIDGE ITEMS LISTED UNDER BRIDGE NUMBERS IN MILE COLUMNS REGARDLESS OF LOCATION

TYPICAL CROSS SECTIONS AND DETAILS

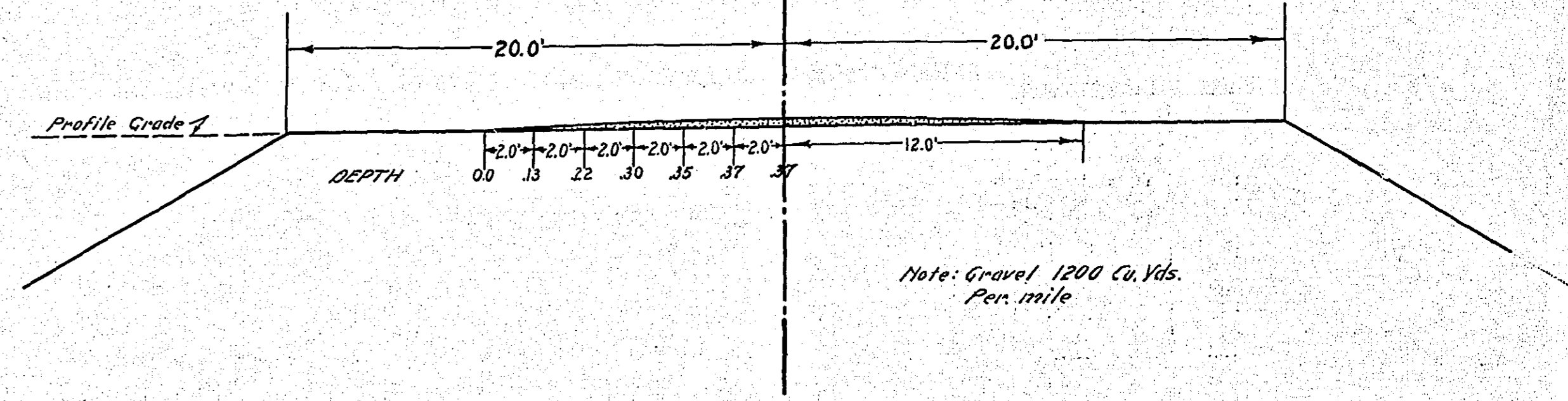
FED. ROAD DIST. NO.	STATE	FED. AID PROJ. NO.	REC.	FISCAL YEAR	SHEET NO.	TOTAL SHEETS
4	MINN.					

28-01-B - SEC. 1.

GRADING SECTION

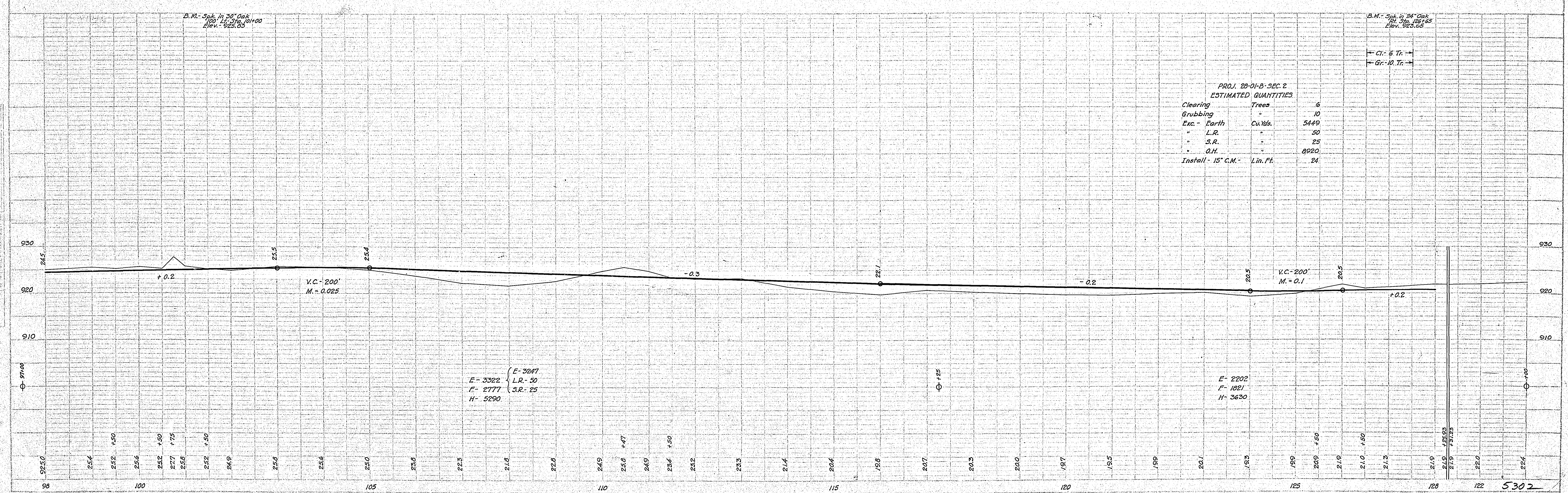
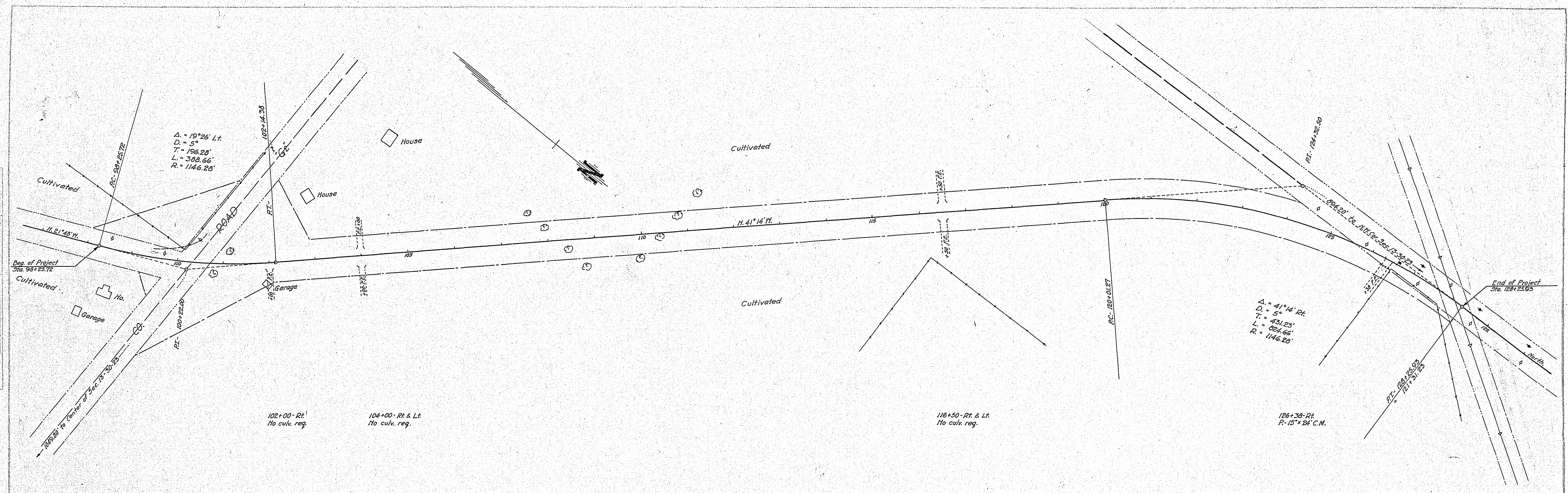


GRAVEL SECTION



PLAN  
 PROJECT: COUNTY ROAD 26  
 SHEET NO. 5 OF 8  
 DATE: 11/15/1955  
 DRAWN BY: J. W. HARRIS  
 CHECKED BY: J. W. HARRIS

PROFILE  
 PROJECT: COUNTY ROAD 26  
 SHEET NO. 5 OF 8  
 DATE: 11/15/1955  
 DRAWN BY: J. W. HARRIS  
 CHECKED BY: J. W. HARRIS



PROJ. 26-01-B-SEC. 2  
 ESTIMATED QUANTITIES

Clearing	Trees	6
Grubbing	"	10
Exc. - Earth	Cu. Yds.	5449
" L.R.	"	50
" S.R.	"	25
" O.H.	"	6920
Install - 15" C.M.	Lin. Ft.	24

E- 3322 { E- 3247  
 F- 2777 { L.R- 50  
 H- 5290 { S.R- 25

E- 2202  
 F- 1821  
 H- 3630