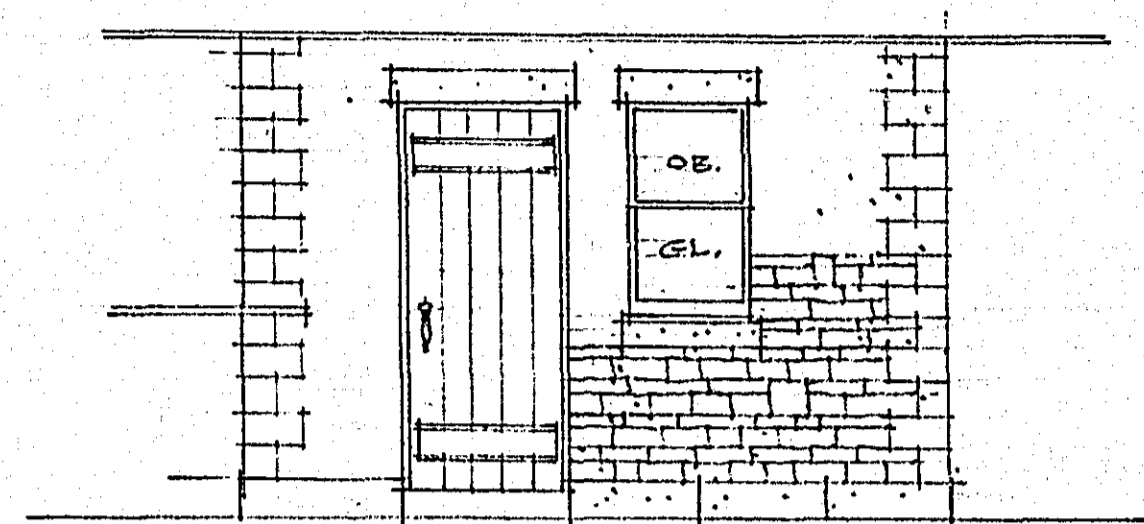
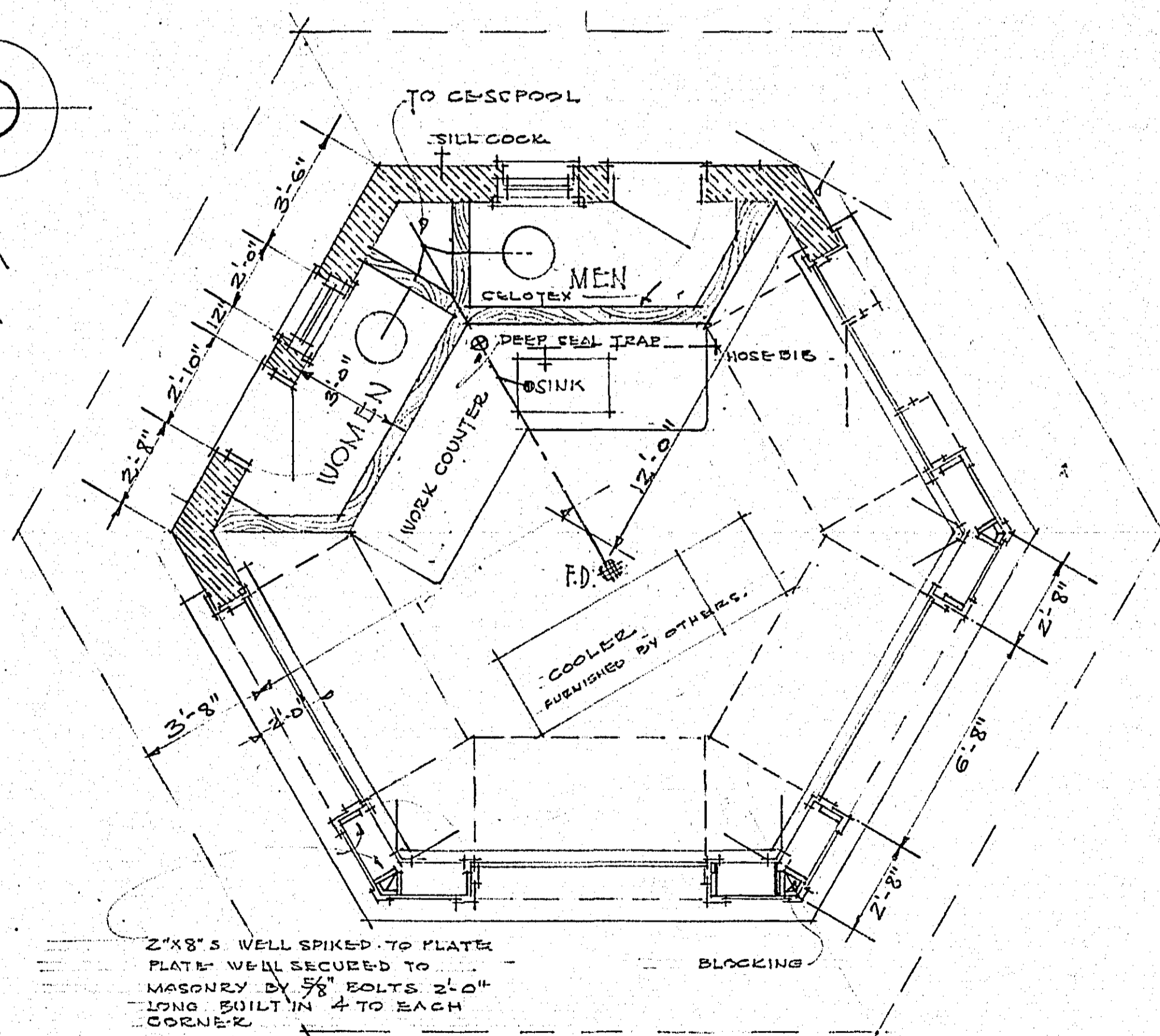
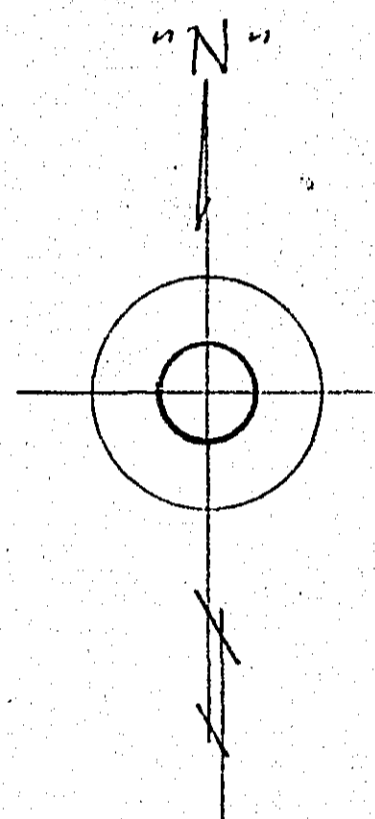


"ELEVATION"

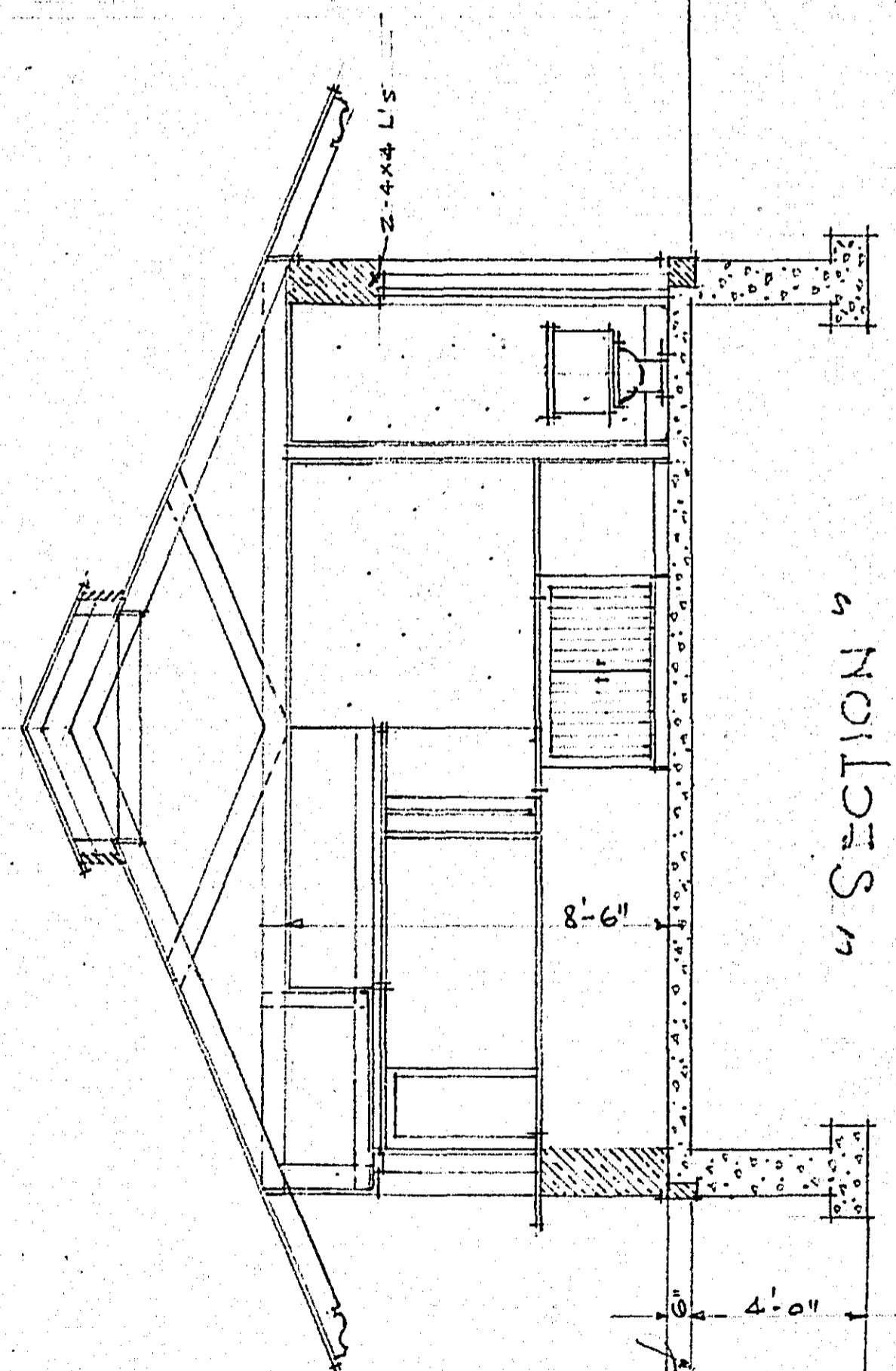


ELEV. OF ENTRANCE TO TOILET

NOTES DOUBLE HUNG SASH-OBSCURE GLASS.
1 3/4" DOOR ROUGH SAUN FACED.
HARDWARE COMPLETE INC. LOCK.



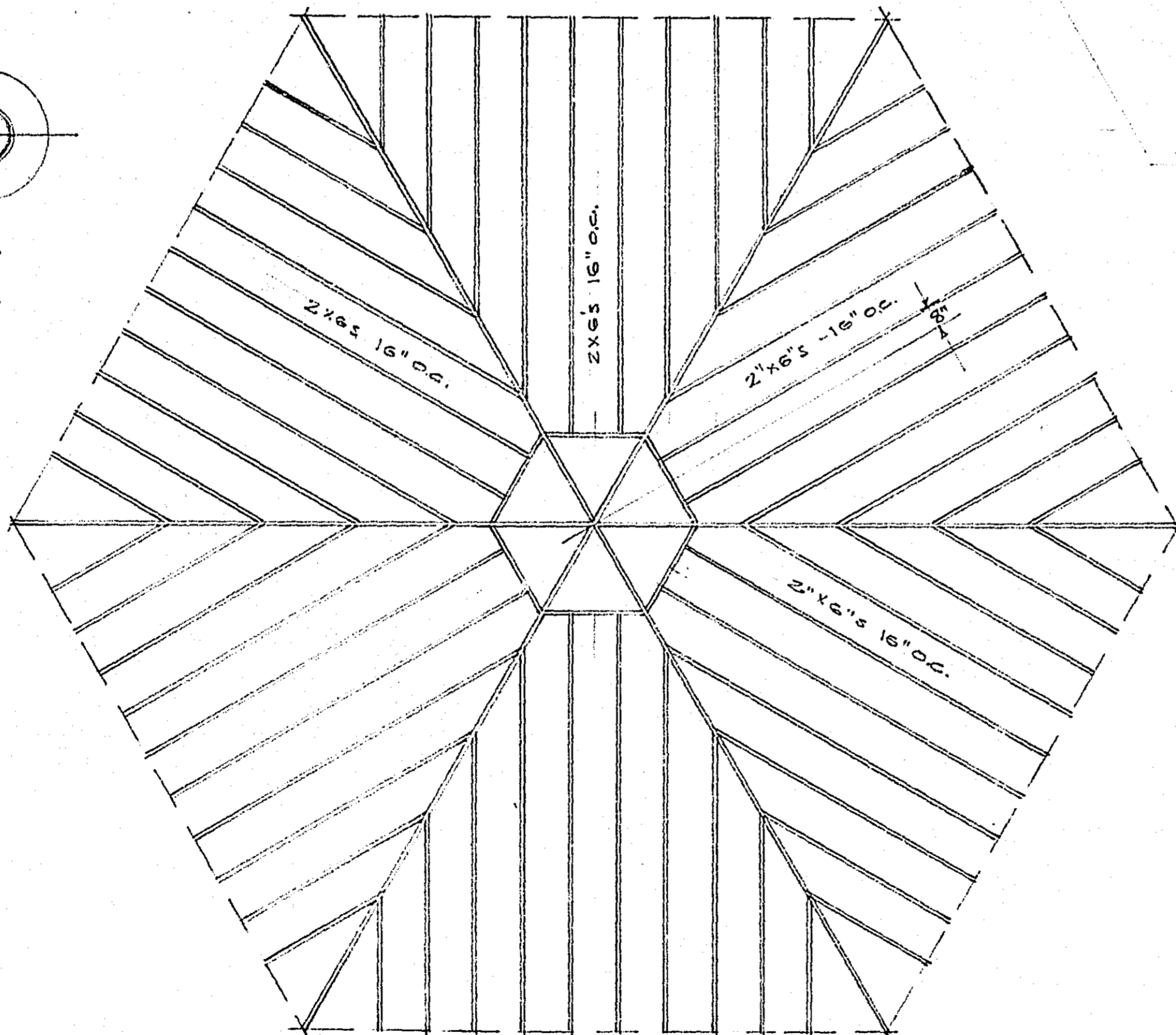
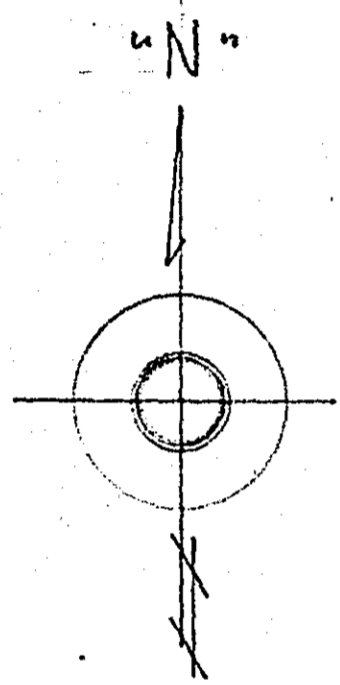
"FLOOR PLAN"
SCALE 1/4" = 1'-0"



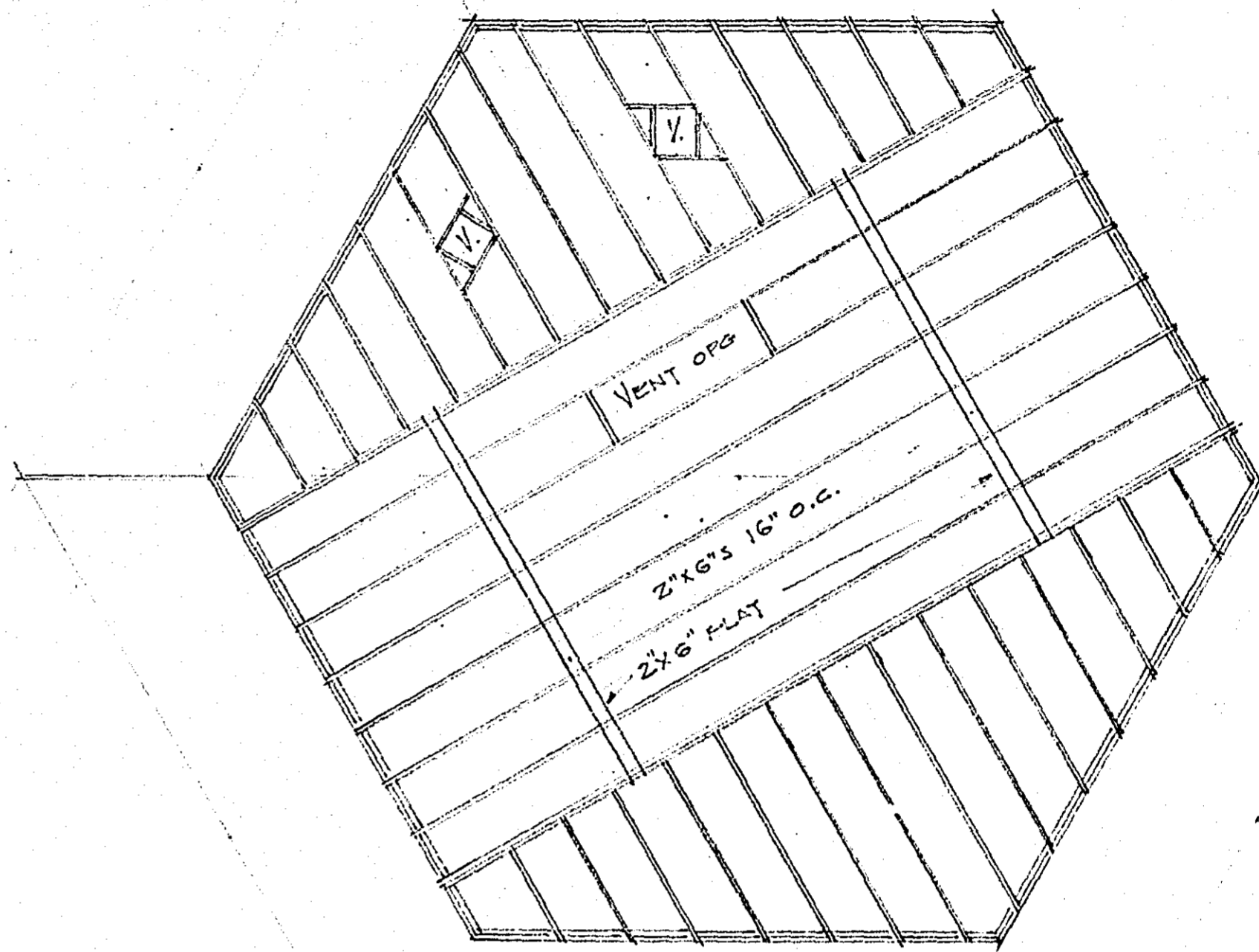
"SECTION"

REFRESHMENT STAND - KELLER COURSE
OFFICE OF COUNTY ENGINEER
D. N. COATES COUNTY ENGINEER
SEPT. 26-1934.

MICROFILMED
RAMSEY CO. ENGR.



" ROOF FRAMING PLAN "

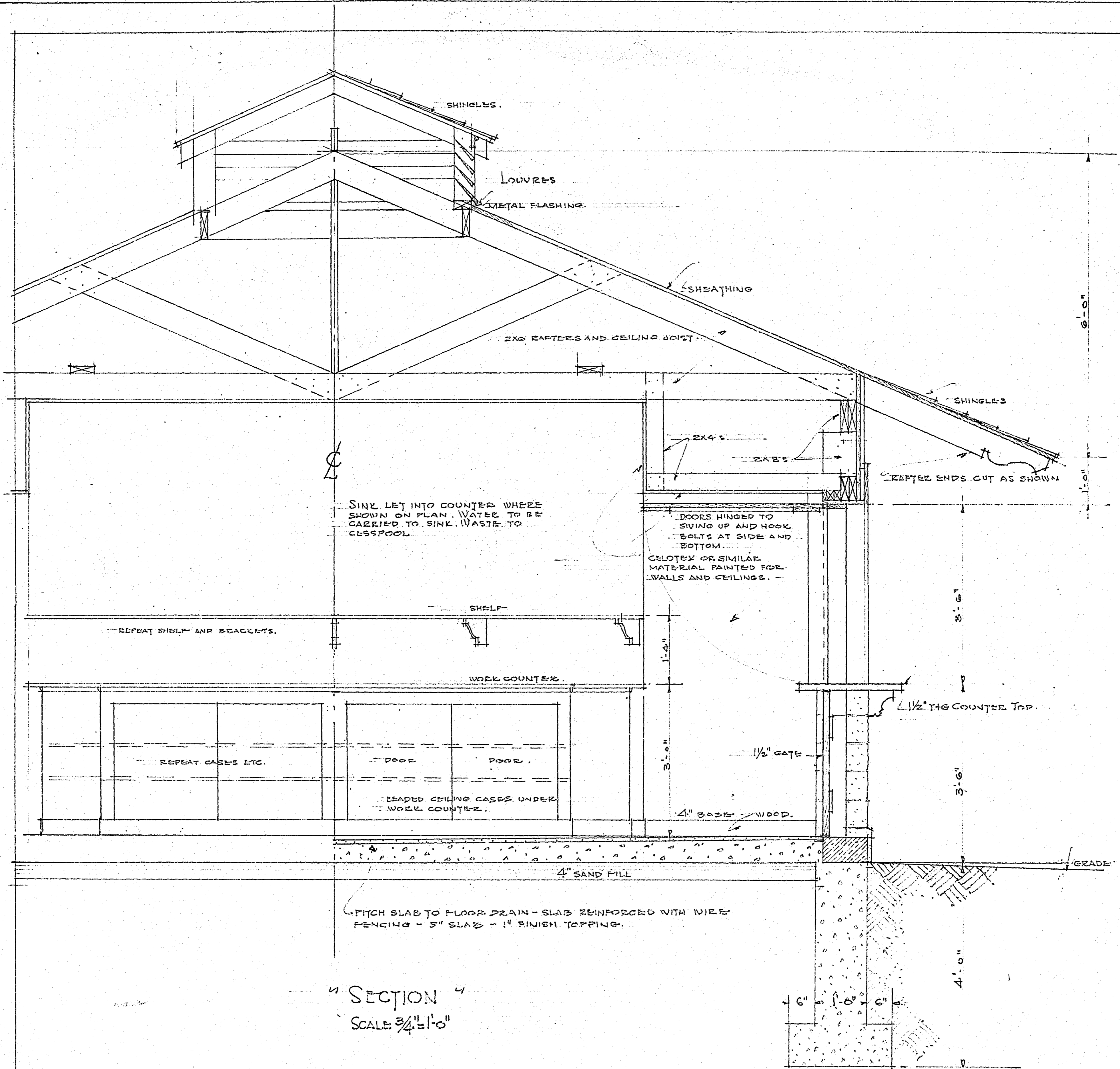


" CEILING FRAMING PLAN "

REFRESHMENT STAND - KELLER COURSE
OFFICE OF COUNTY ENGINEER
P.N. COATES COUNTY ENGINEER.
SEPT 26 - 1934.

MICROFILMED
RAMSEY CO. ENGR.

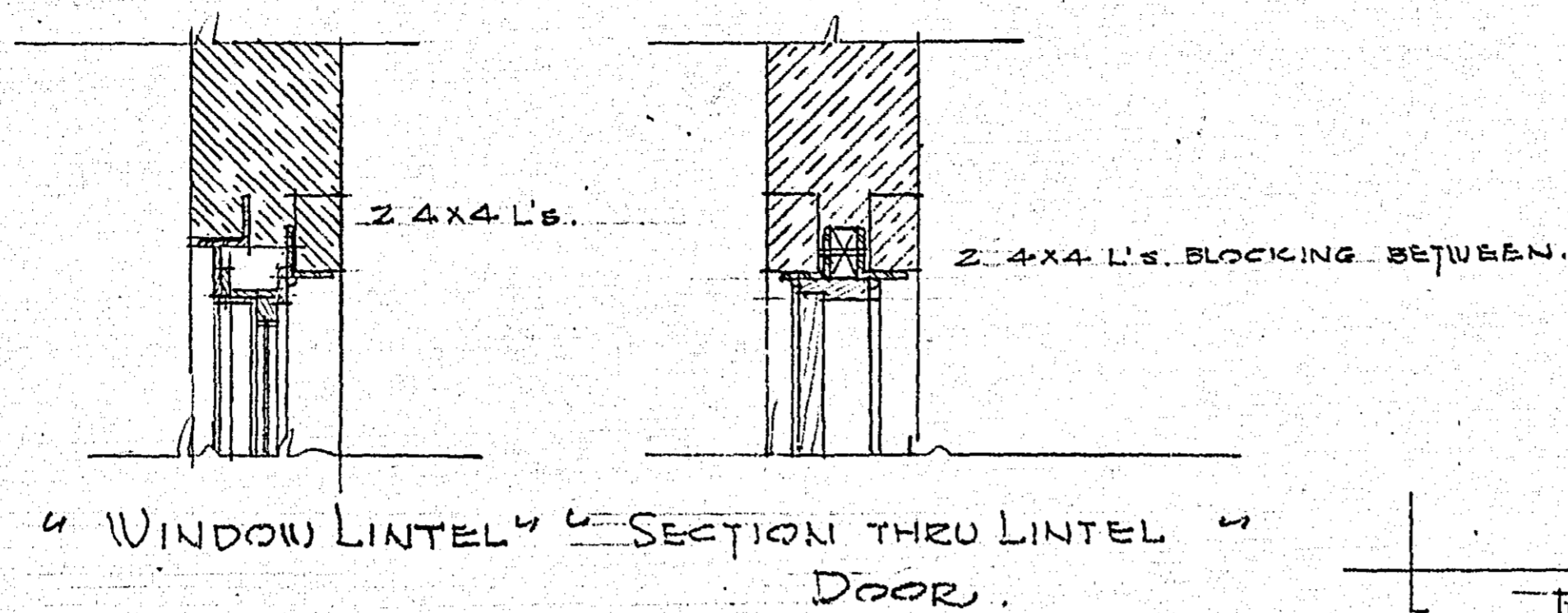
2



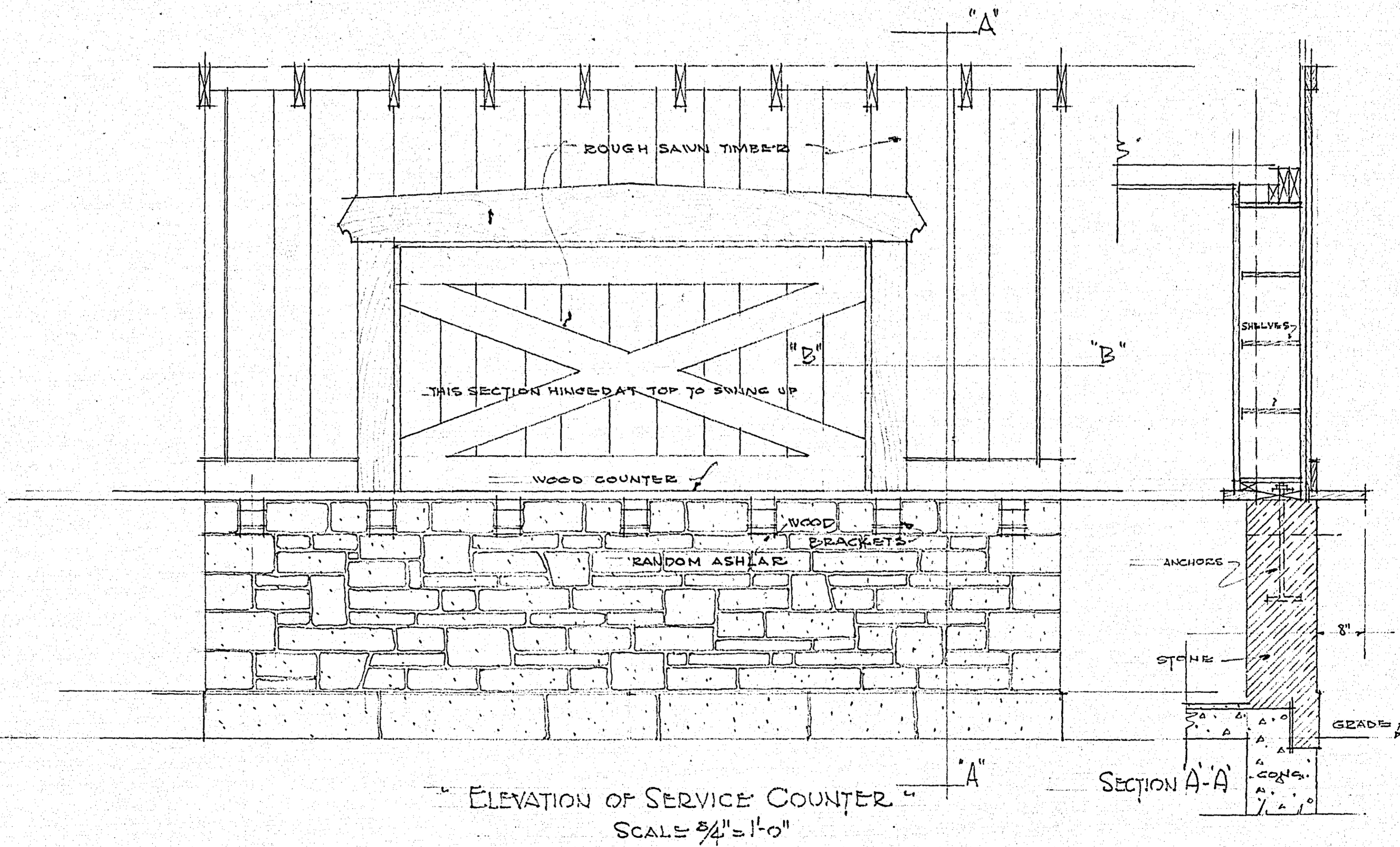
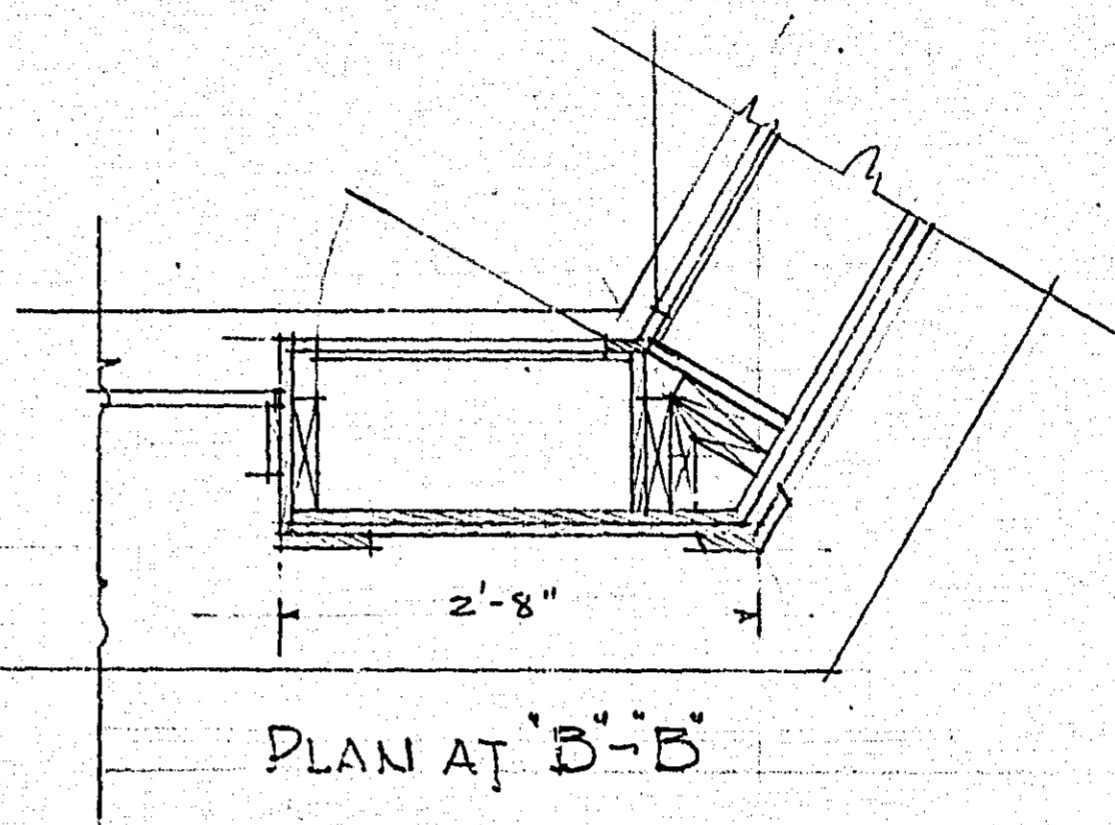
REFRESHMENT STAND - KELLER COURSE,
 OFFICE OF COUNTY ENGINEER,
 P. N. COATES COUNTY ENGINEER
 SEPT. 26-1934.

MICROFILMED
 RAMSEY CO. ENGR.

3



NOTE: INSIDE OF STONE WALL UNDER COUNTERS AND TOILETS POINTED



REFRESHMENT STAND - KELLER COURSE

OFFICE OF COUNTY ENGINEER.

D.N. COATES COUNTY ENGINEER.

SEPT 26-1934

MICROFILMED
RAMSEY CO. ENGR.