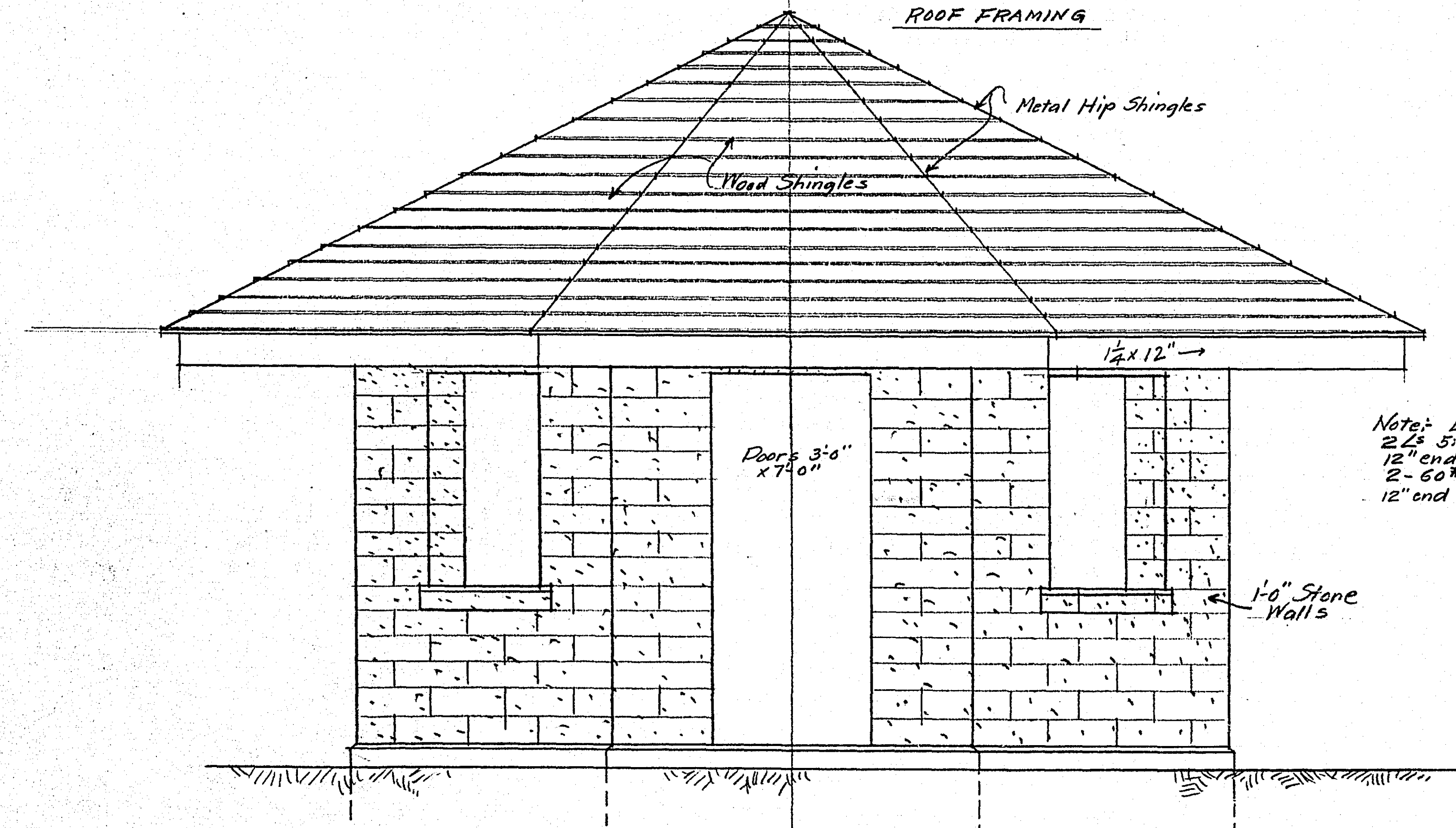
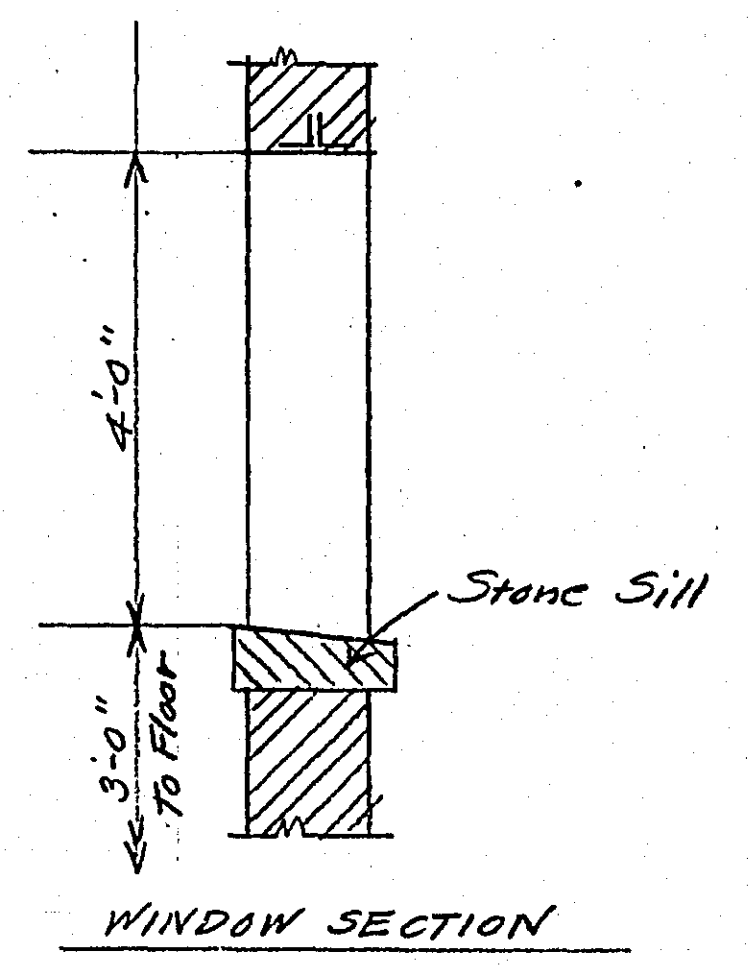


ROOF FRAMING

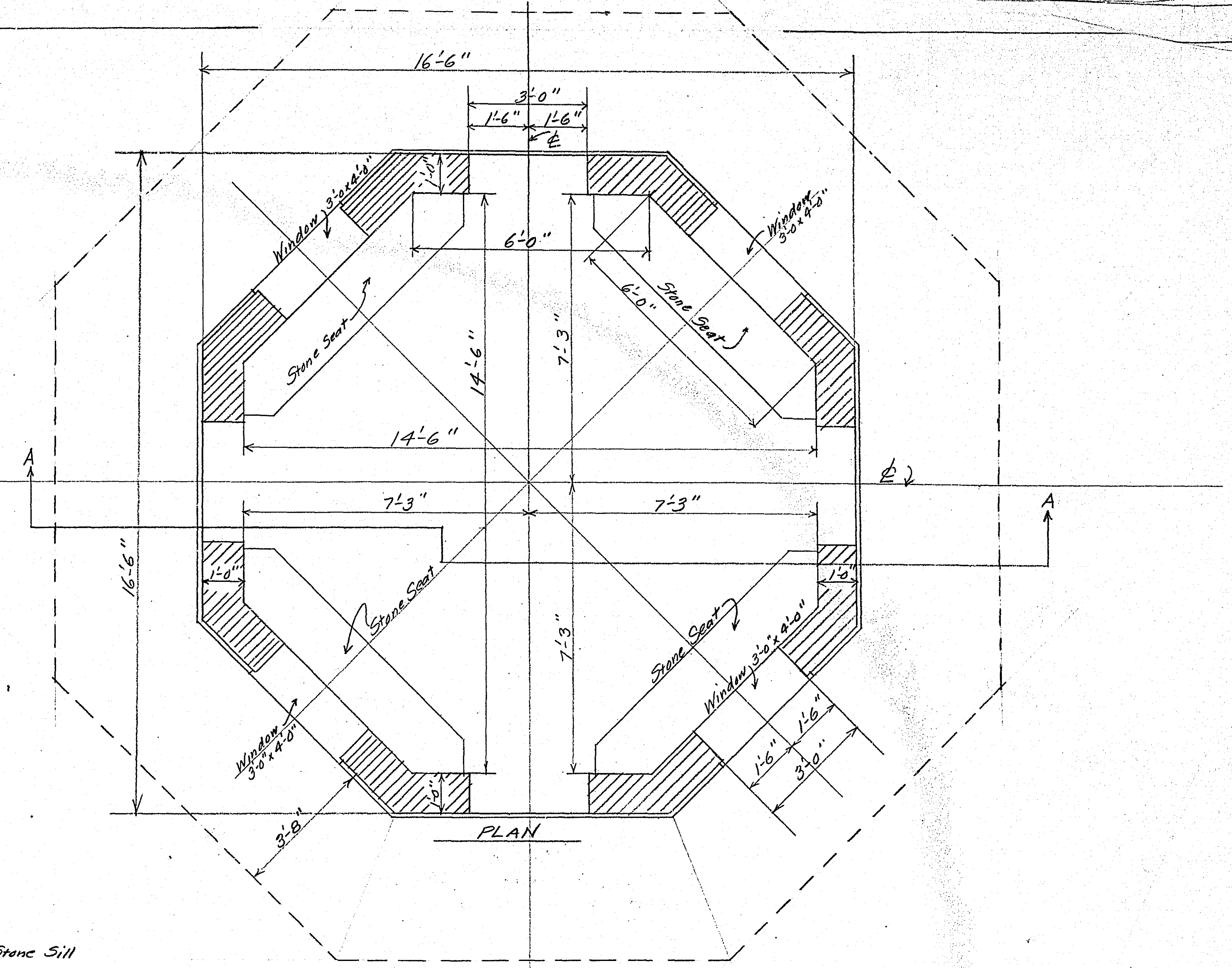


ELEVATION

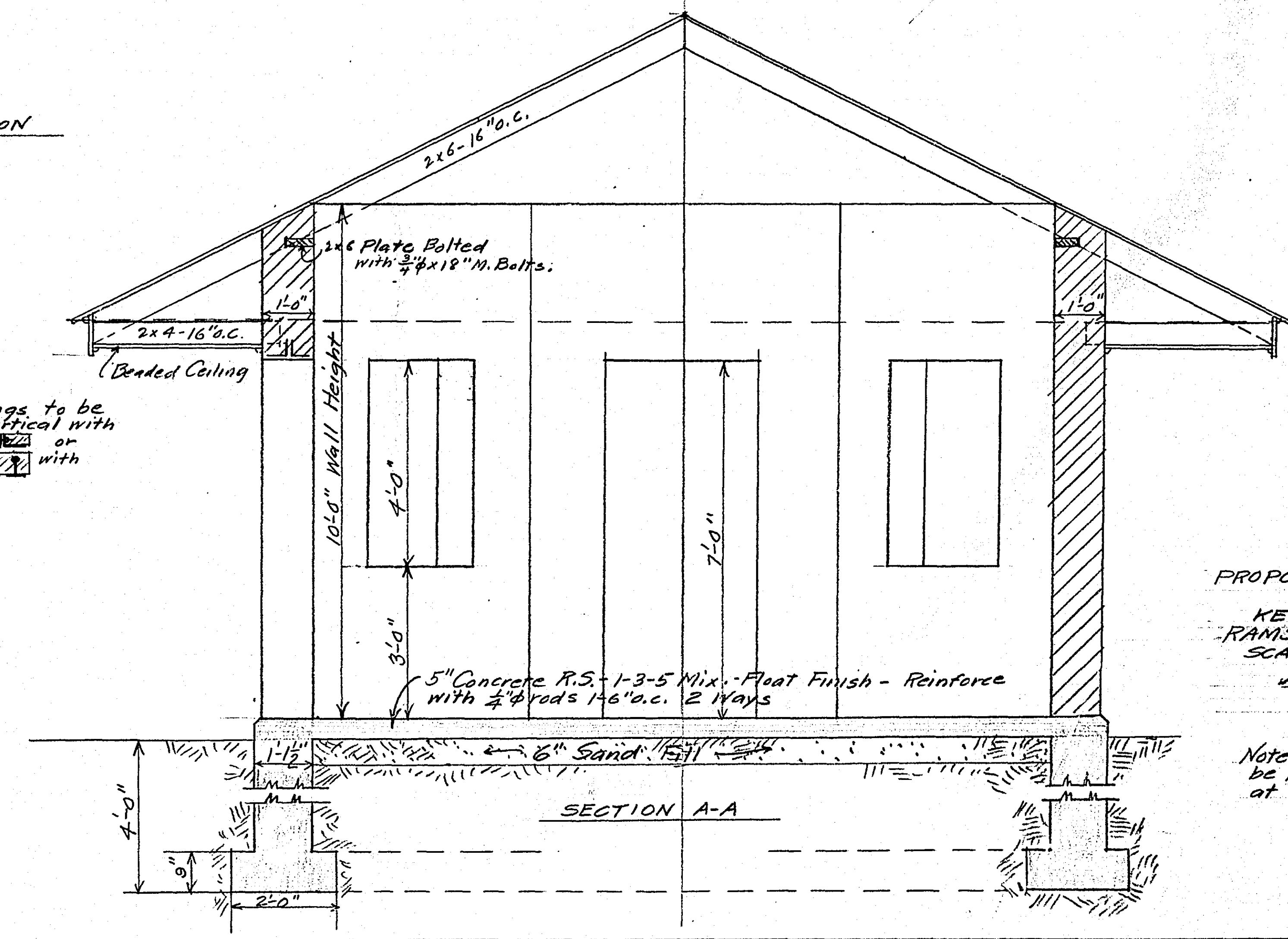
Note: Lintels for openings to be 2x5x4x3/4" short leg vertical with 12" end bearing thus or 2-60# rebar's thus with 12" end bearing



WINDOW SECTION



PLAN



SECTION A-A

PROPOSED SHELTER HOUSE FOR KELLER GOLF COURSE RAMSEY COUNTY, MINN. SCALE 1/2" = 1'-0" JUNE 1936  
*Edmund J. Ramsey*  
 COUNTY SURVEYOR

Note: One Building as shown to be built at Green #5 and one at Green #11