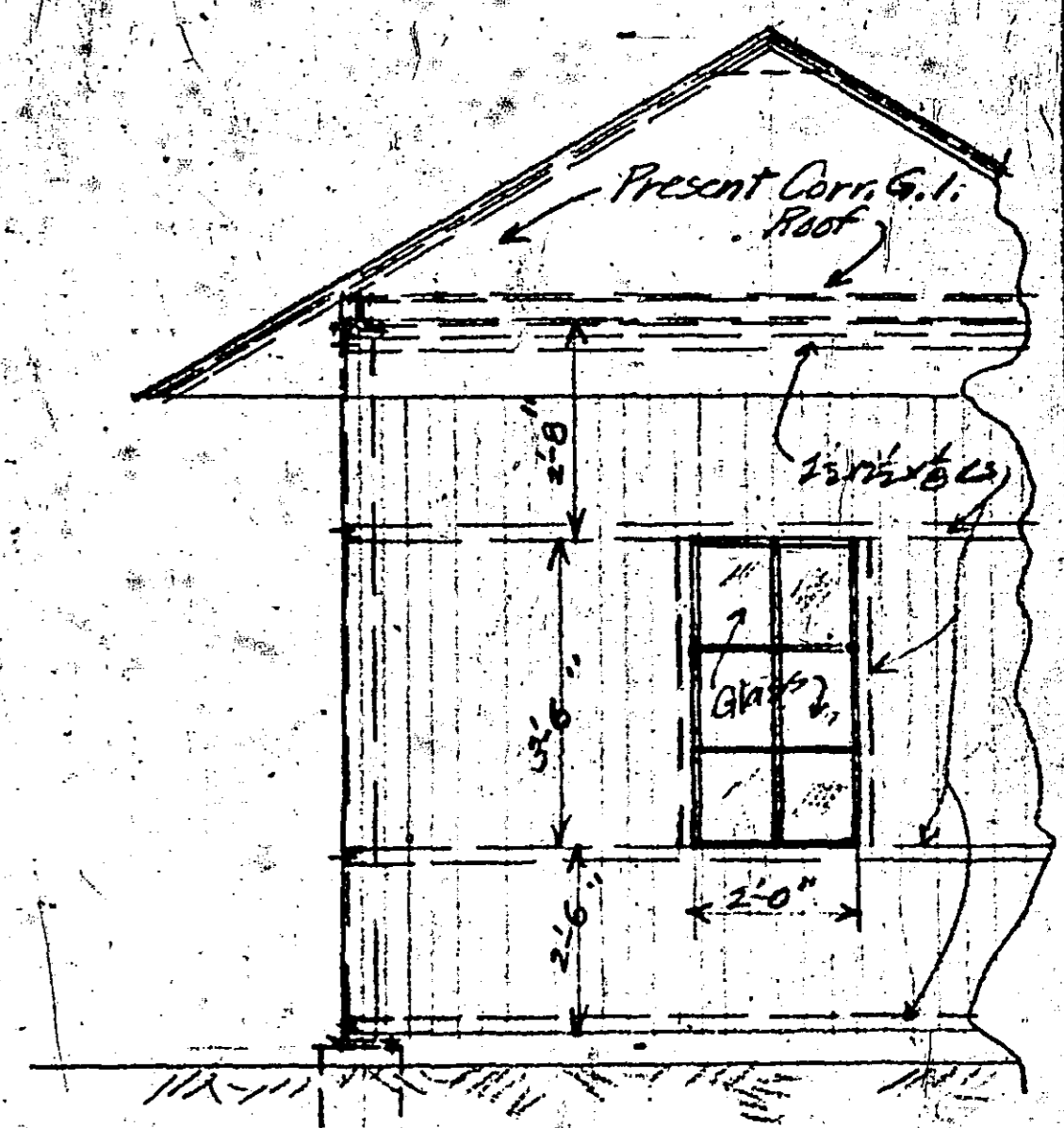
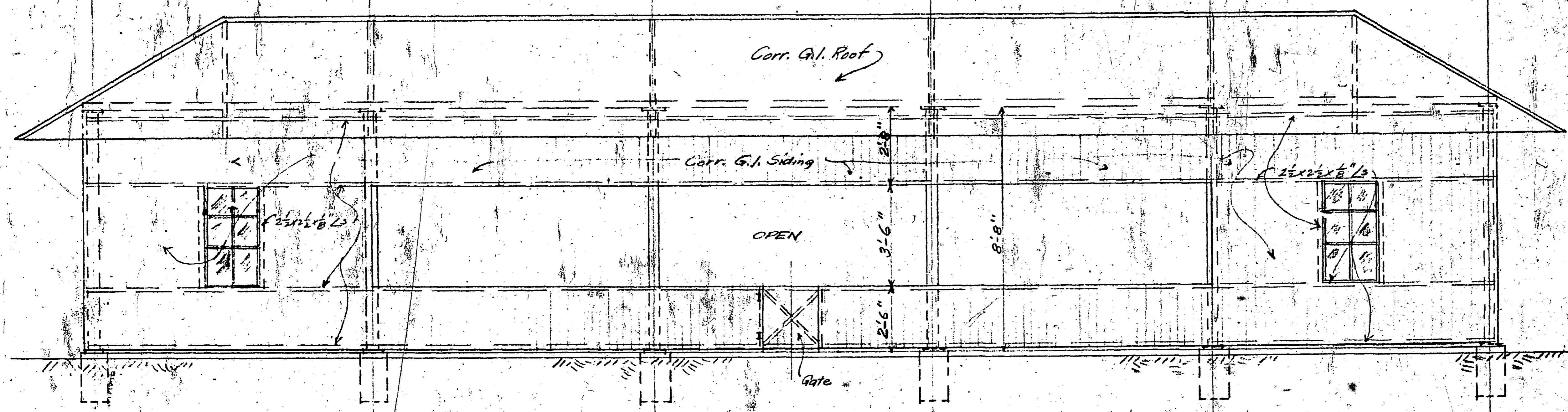


10'-0" 10'-0" 10'-0" 10'-0" 10'-0"

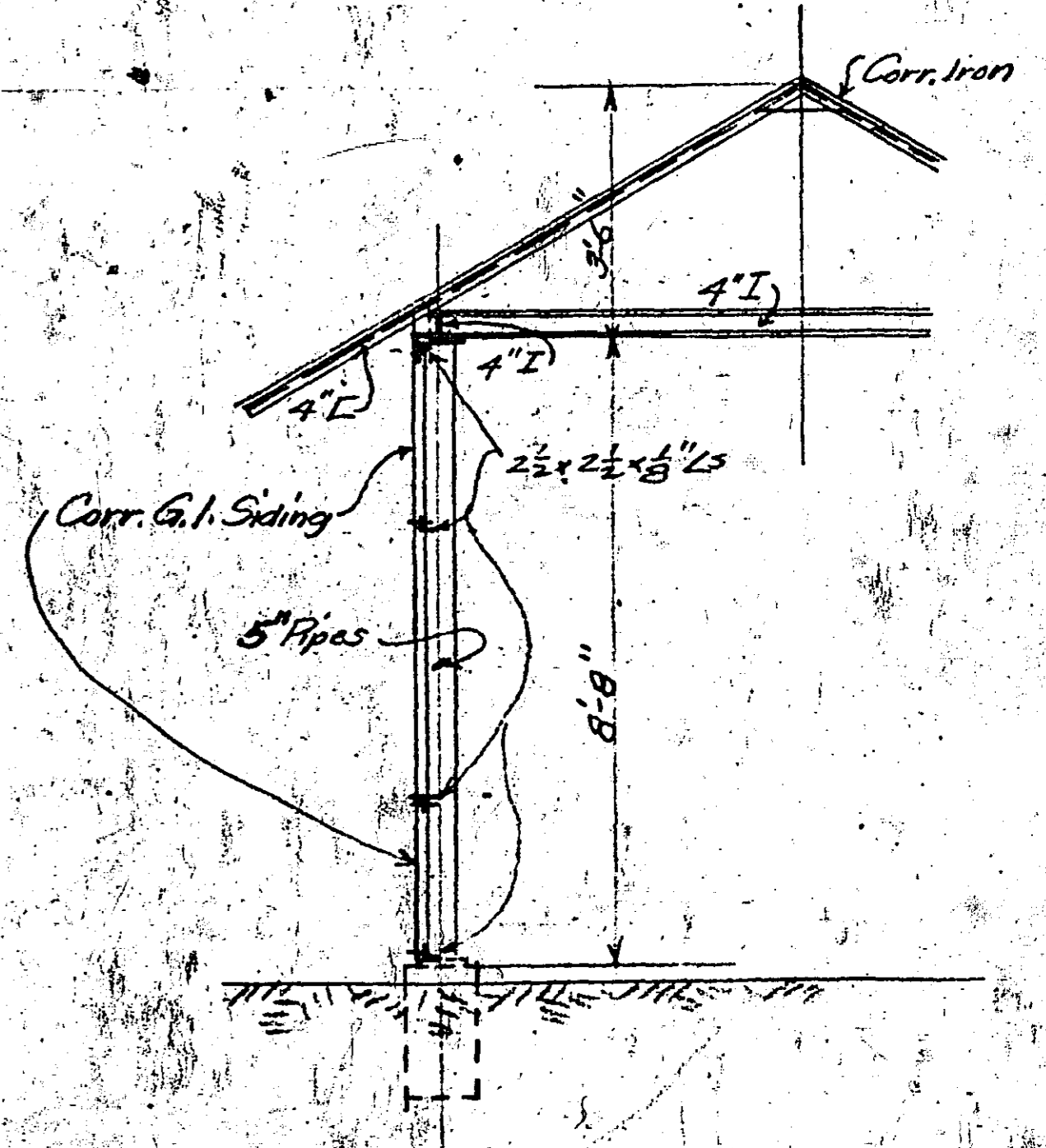
50'-0"



Note: Corrugated G.I. Siding to be wired to angle framing shown and be of same gauge as that now on roof.
Bolt angle framing to present pipe posts.

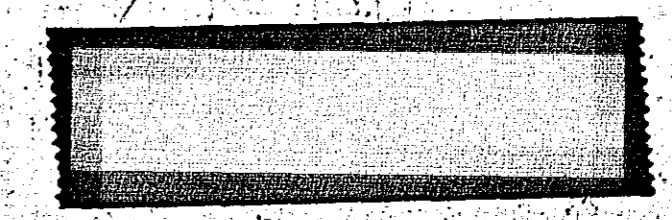


SIDE ELEVATION



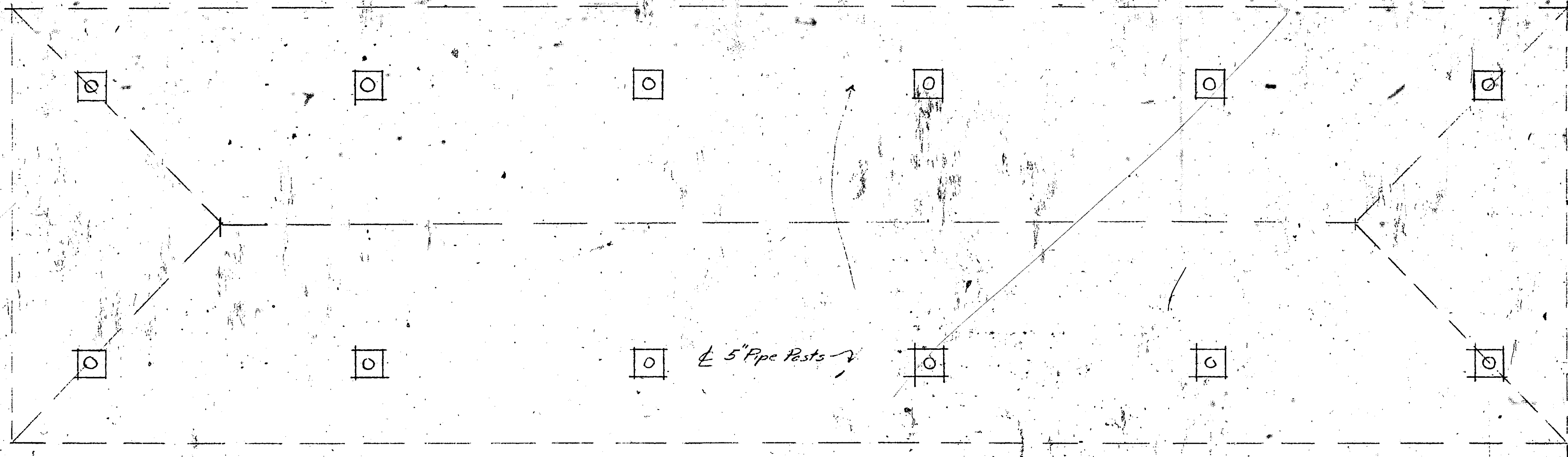
CROSS SECT.

REVISED ARRANGEMENT OF
CADDY SHELTER AT KELLER GOLF COURSE
EMIL H. SCHULZ, COUNTY SURVEYOR
ST. PAUL, MINN. - APRIL 1935 - SCALE 3/8" = 1'-0"



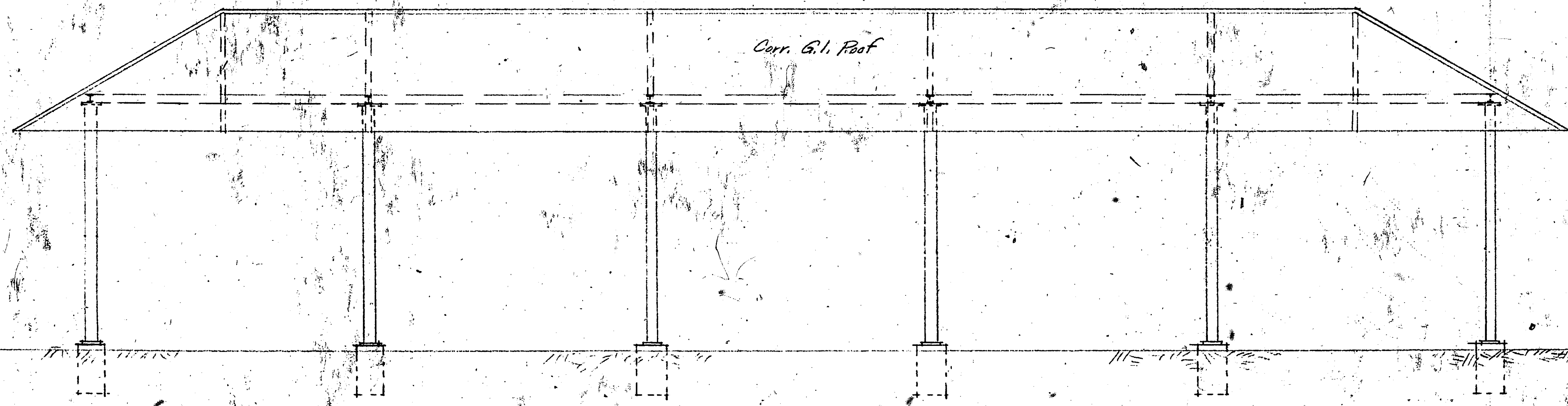
517

Sheet #2

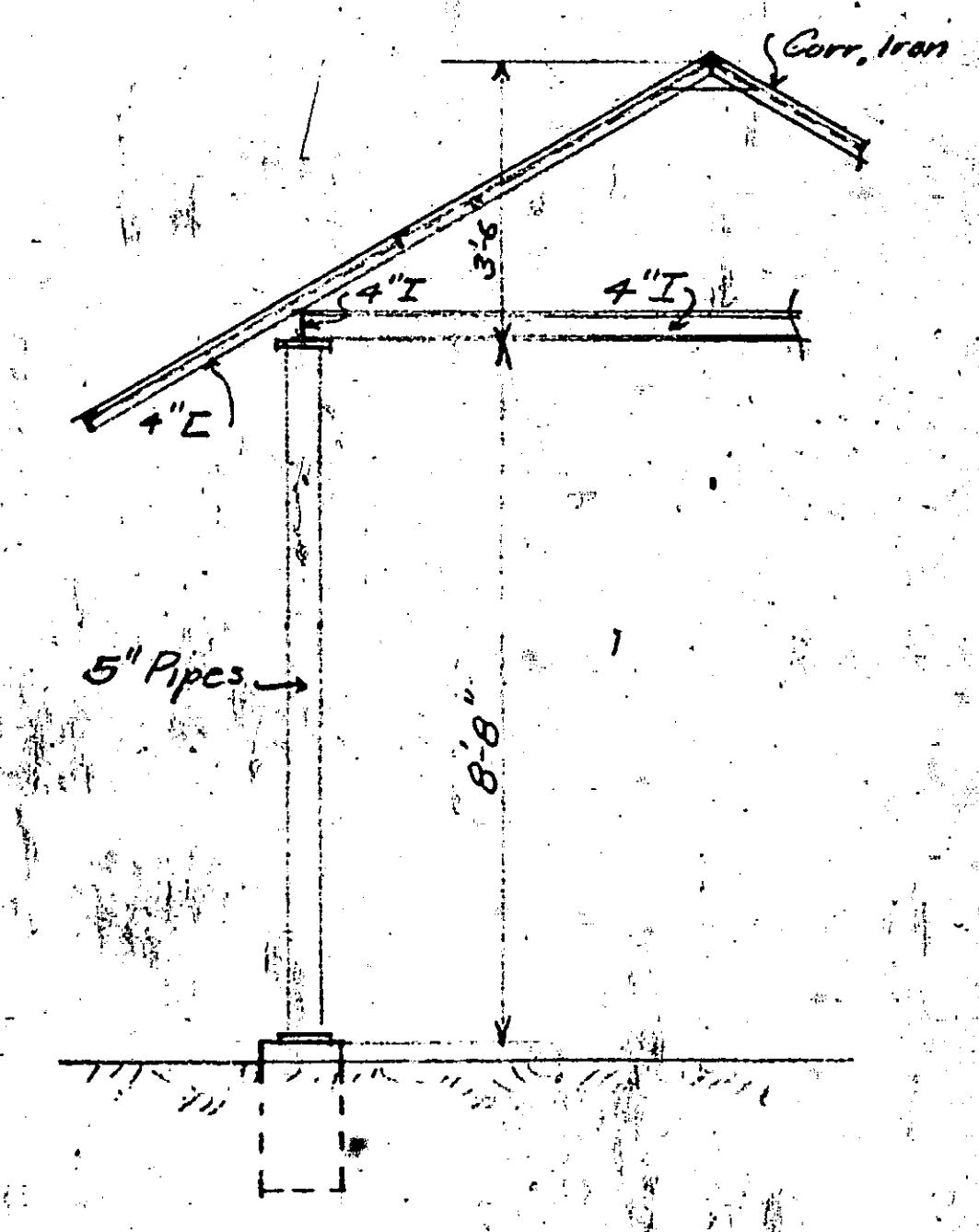


PLAN

50'-0"

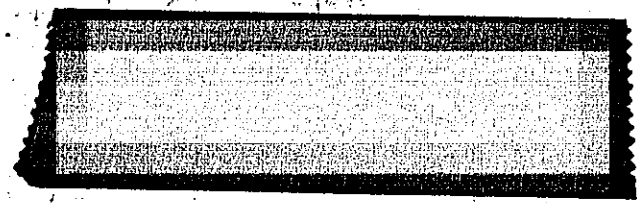


SIDE ELEV.



CROSS SECT.

PRESENT ARRANGEMENT OF
 CADDY SHELTER AT KELLER GOLF COURSE
 ERIC H. SCHULZ, COUNTY SURVEYOR
 ST. PAUL, MINN. - APRIL 1935 - SCALE $\frac{3}{8}$ "=1'-0"



517 Scale $\frac{3}{8}$ "=1'-0"

Sheet #1

Redmond