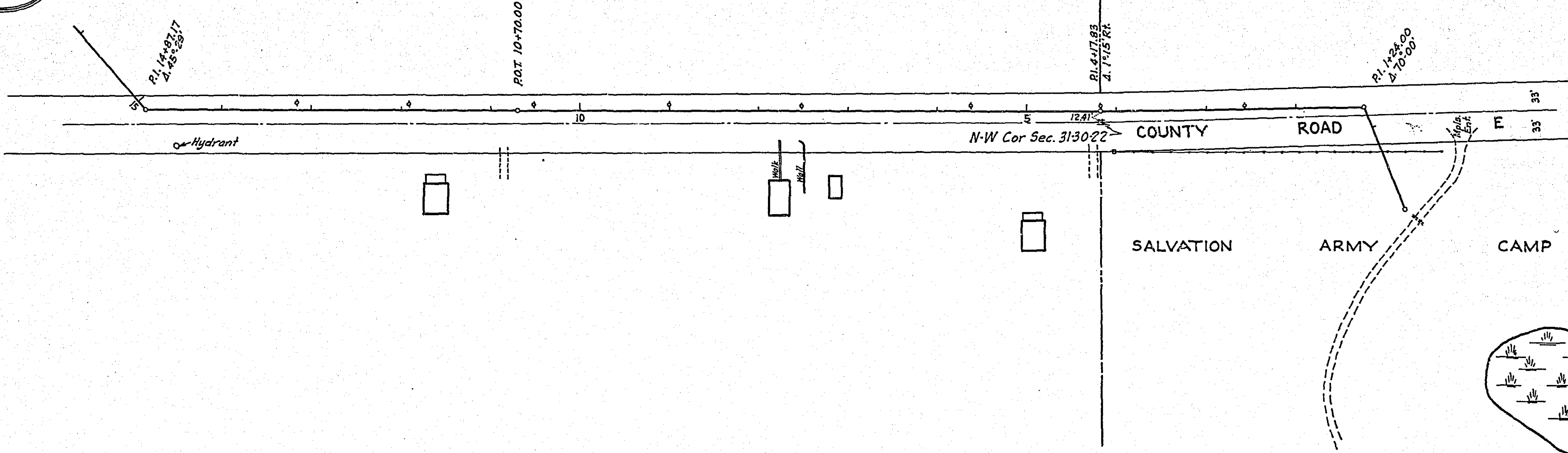


MINNEAPOLIS RESERVOIR

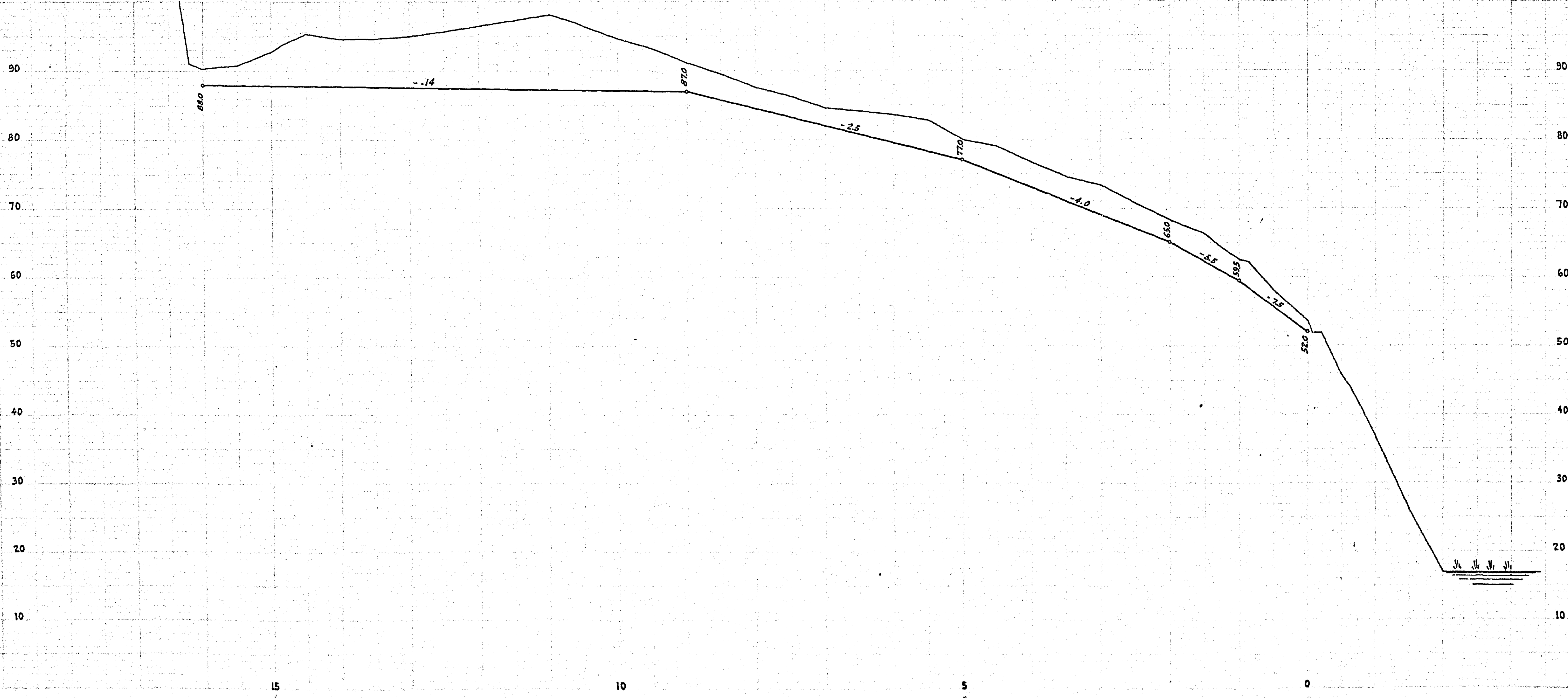
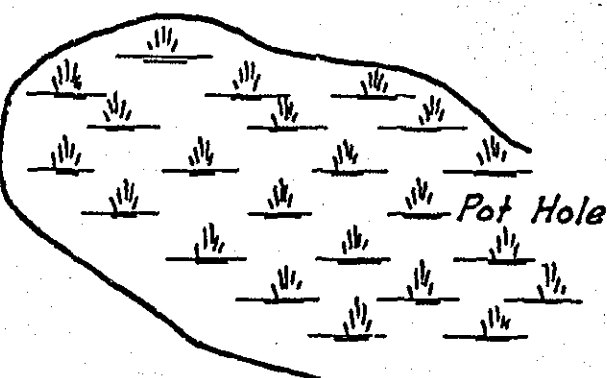
B.M. On Walk at Base of Rail on E  
Assumed Elev 100.00



ANOKA CO.  
RAMSEY CO.

COUNTY ROAD

SALVATION ARMY CAMP



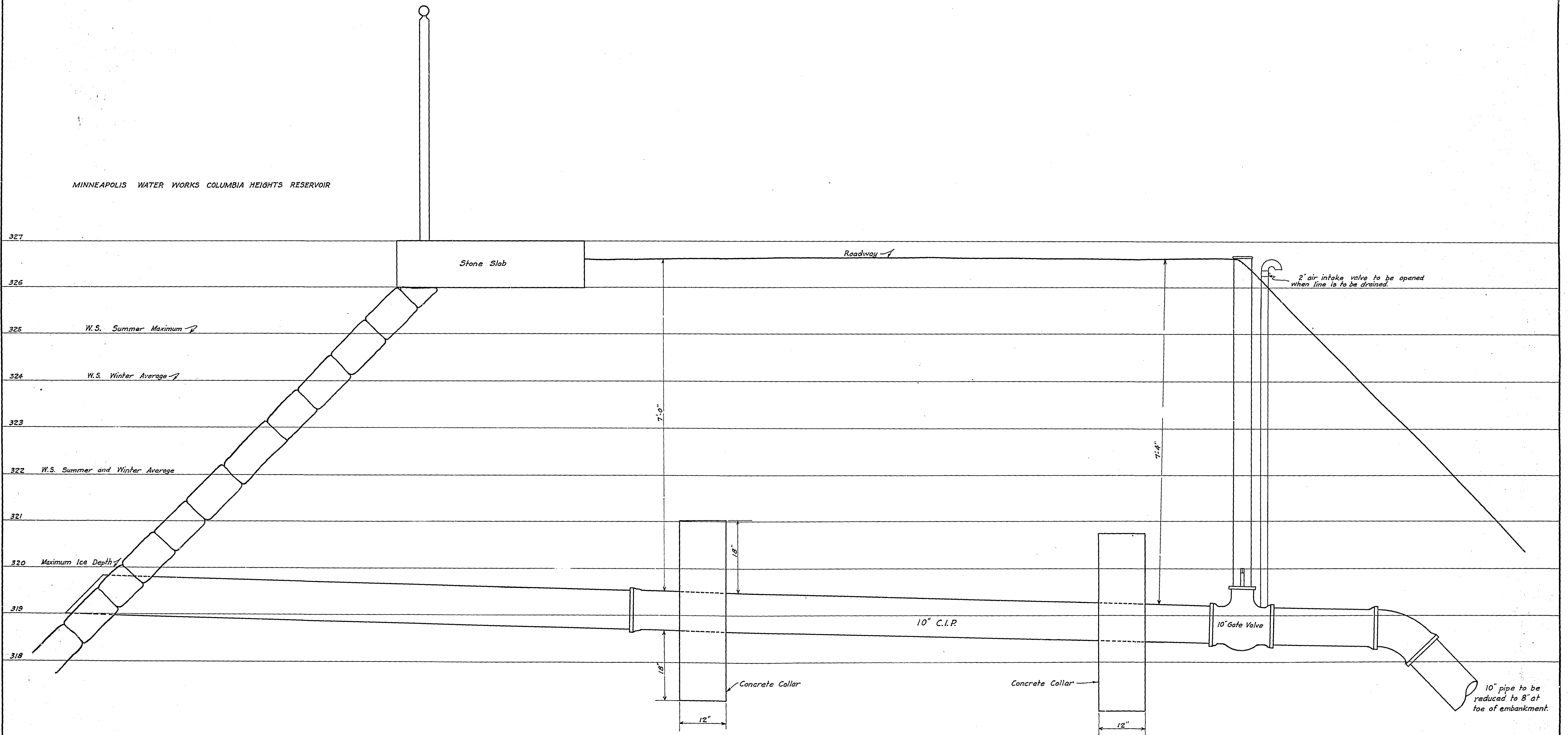
OFFICE OF COUNTY ENGINEER  
RAMSEY COUNTY, MINN.  
PAUL N. COATES  
COUNTY ENGINEER

PLAN AND PROFILE  
OF  
PIPE LINE FOR CONVEYING WATER  
FROM CITY OF MINNEAPOLIS RESERVOIR  
TO SILVER LAKE  
FOR  
LAKE LEVEL MAINTENANCE

SCALE { Hor. 1"=10'  
Vert. 1"=100'

MAY 1933

MINNEAPOLIS WATER WORKS COLUMBIA HEIGHTS RESERVOIR



PROPOSED RESERVOIR TAP  
FOR  
SILVER LAKE PIPE LINE

1'-1'-0"