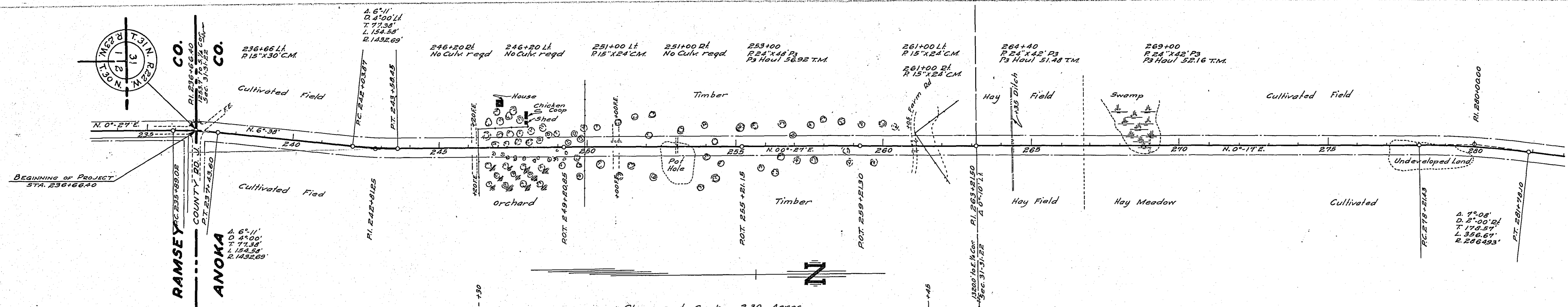






PLAN  
 PROFILE  
 SECTION  
 NOTES

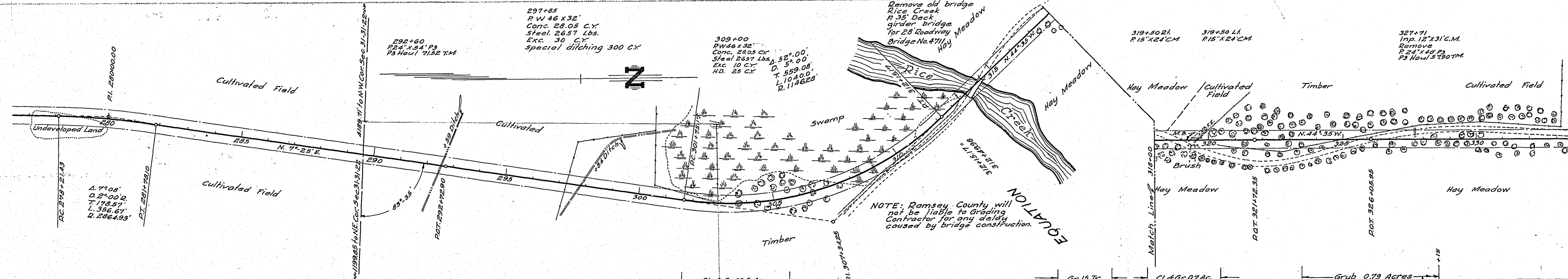
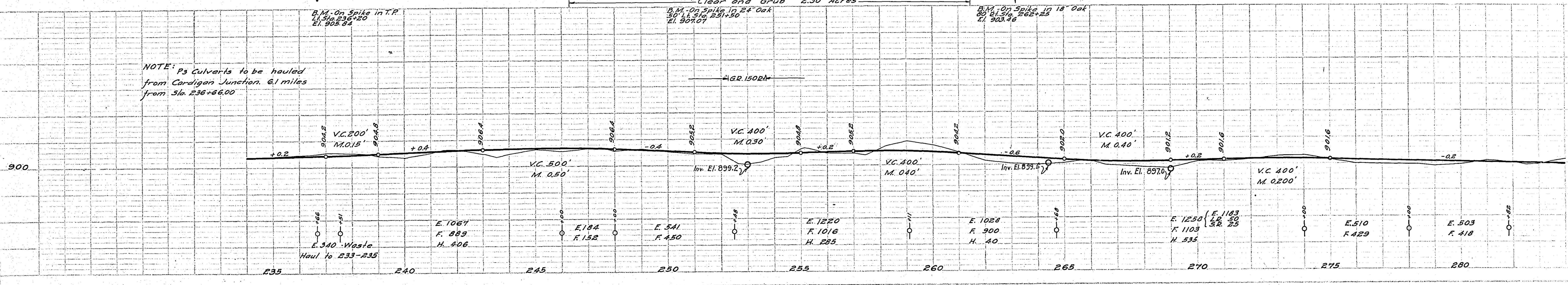
PROFILE  
 SECTION  
 NOTES



NOTE: P3 Culverts to be hauled from Cordigan Junction, 6.1 miles from Sta. 236+66.00

**MILE ONE**  
 ESTIMATED QUANTITIES  
 STA. 236+66.4 to STA. 281+82

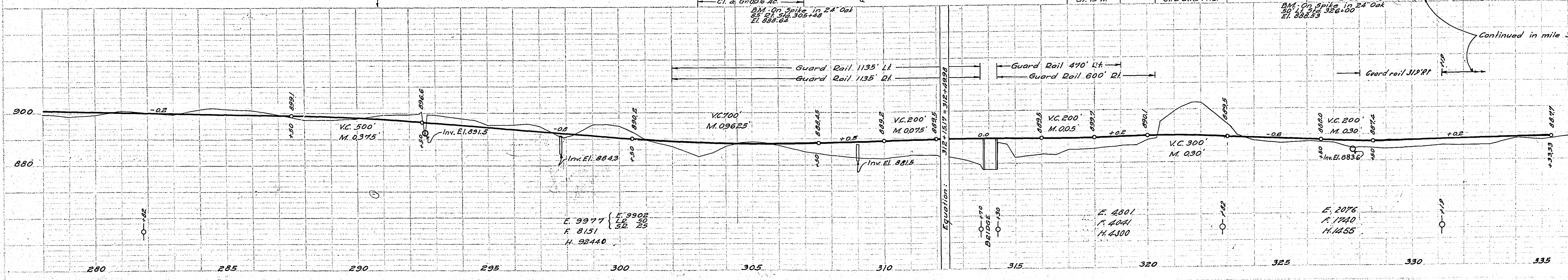
Clearing Acres	2.30
Grubbing "	2.30
Exc. Earth Cu Yds.	6576
L.R.	50
S.R.	25
O.H.	1266
Install 15" C.M. Lin.Ft.	102
24" P3 Lin.Ft.	132
P3 Haul T.M.	160.56
Guard Rail - Cable Lin.Ft.	150
" " Anchors Each	2



NOTE: Ramsey County will not be liable for Grading Contractor for any delays caused by bridge construction.

**MILE TWO**  
 ESTIMATED QUANTITIES  
 STA. 281+00 to STA. 331+12

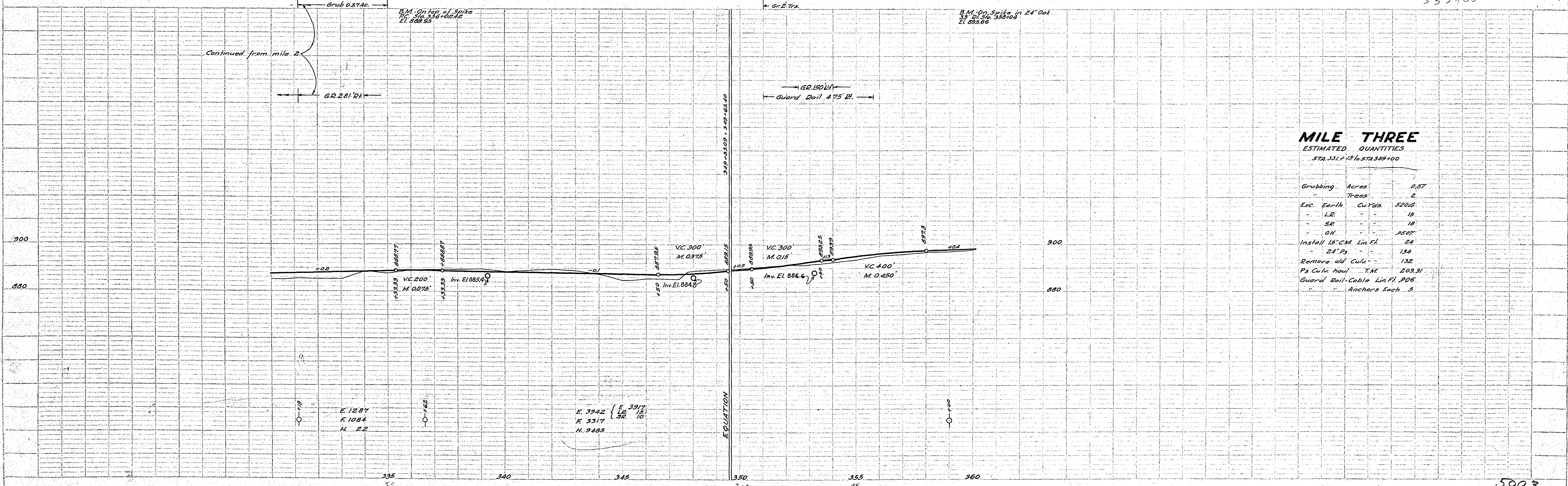
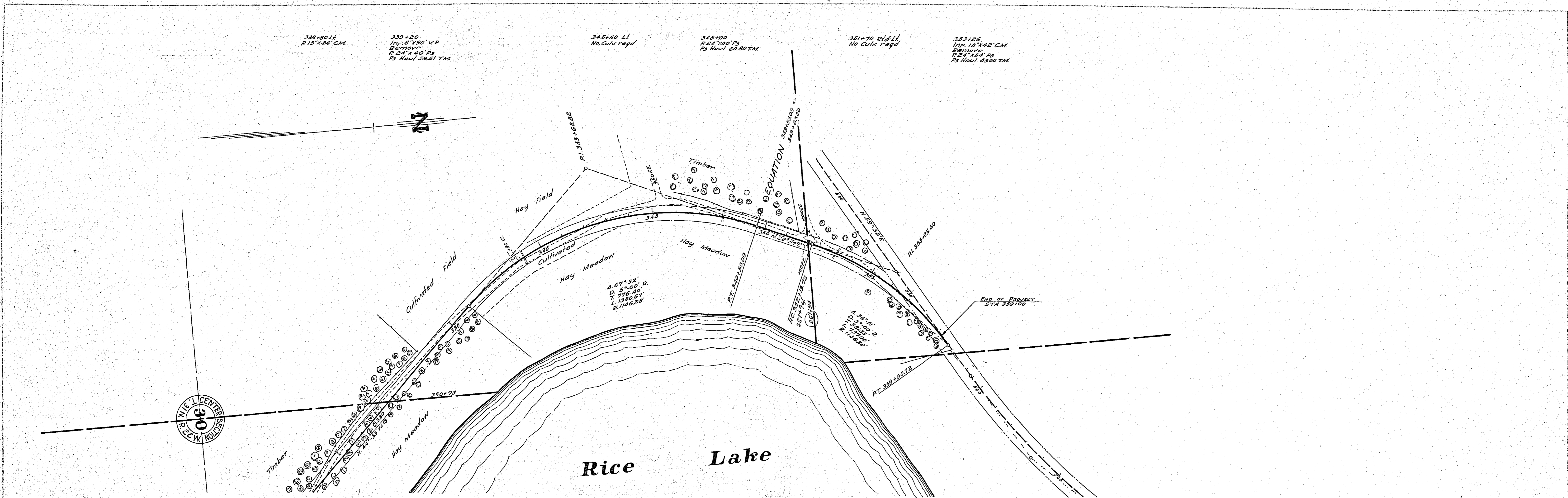
Clearing Acres	0.13
Grubbing "	2.00
Trees	15
Exc. Earth Cu Yds.	16770
L.R.	50
S.R.	25
O.H.	98135
Install 15" C.M. Lin.Ft.	48
24" P3	94
P3 Culk. Haul T.M.	129.42
Remove old Culk. Lin.Ft.	31
Guard Rail - Cable	355P
Anchors Each	9
Monolithic Culk. Conc. CX	56.10
Steel Lbs.	5314
Exc. CX	40
H.D.	25
Special ditching Cu Yds.	300



5003

PLAN	SURVEYED	DATE
	PLOTTED	
	NOTED	
	BY	
	DATE	

PROFILE	SURVEYED	DATE
	PLOTTED	
	NOTED	
	BY	
	DATE	



**MILE THREE**  
ESTIMATED QUANTITIES  
STA. 331+12.16 STA. 359+00

Grubbing Acres	0.57
Trees	2
Exc. Earth Cu Yds.	5202
LR	15
SR	18
OH	2502
Install 15' CM Lin. Fl.	24
24' Ps	134
Remove old Culk	132
Ps Culk haul TM	203.31
Guard Rail-Cable Lin. Fl.	206
Anchors Each	5