

CONVENTIONAL SIGNS & ABBREVIATIONS

STATE LINE	-----	EXCAVATION	F
COUNTY LINE	-----	EMBANKMENT	F
TOWNSHIP LINE	-----	OVERHAUL	H
SECTION LINE	-----	SURFACING	S
CITY, VILLAGE, OR BOROUGH	-----	GUARD RAIL	GR
FENCE LINE	-----	INTERSECTION ANGLE	A
RIGHT-OF-WAY LINE	-----	RADIUS	R
TRAVELLED WAY	-----	ELEVATION	E
RAILROADS	-----	VERTICAL CURVE	VC
RETAINING WALL	-----	BENCH MARK	B.M.
BASE OR SURVEY LINE	-----	SECTIONAL CONCRETE CULVERT	P1
LEVEE	-----	CORRUGATED METAL CULVERT	C.M.
GRAVEL PIT	CULVERT HAUL	P.H.
SAND PIT	TON MILES	T.M.
CLAY PIT	IN PLACE	INP.
ROCK QUARRY	REPLACE	REP.
CULVERTS	RIGHT	R
PLAIN	LEFT	L
WITH FACEWALLS	HAND DITCHING	H.D.
WITH WINGWALLS	POINT OF CURVE	P.C.
DROP INLET	POINT OF TANGENT	P.T.
POWER POLE LINE	POINT OF INTERSECTION	P.I.
TELEPHONE OR TELEGRAPH LINE	SPECIAL EXCAVATION	S.E.
MARSH	SPECIAL FLOWING	S.P.
HEDGE, BRUSH, OR TIMBER	TELEPHONE POLE	T.P.
GROUND ELEVATION			
GRADE ELEVATION			

STATE HIGHWAY DEPARTMENT
OF MINNESOTA

Plan and Profile of State Road No. 5

COUNTY OF RAMSEY

From a point 112.82' N. of the SE. Cor. Sec. 29-30-23 To N. 1/4 Cor. of S.E. 1/4 Sec. 29-30-23
Give proper reference to Sections, Township and Range

GROSS LENGTH 3502.45 FEET 0.663 MILES
LENGTH OF EXCEPTIONS FEET MILES
NET LENGTH 3502.45 FEET 0.663 MILES

PLAN, 1 Inch = 200 Feet
PROFILE, Horz. 1 Inch = 200 Feet. Vert. 1 Inch = 20 Feet
WORKING PLANS { Horz. 1 Inch = 100 Feet
 { Vert. 1 Inch = 10 Feet
 { Cross-Sections, 1 Inch = 10 Feet

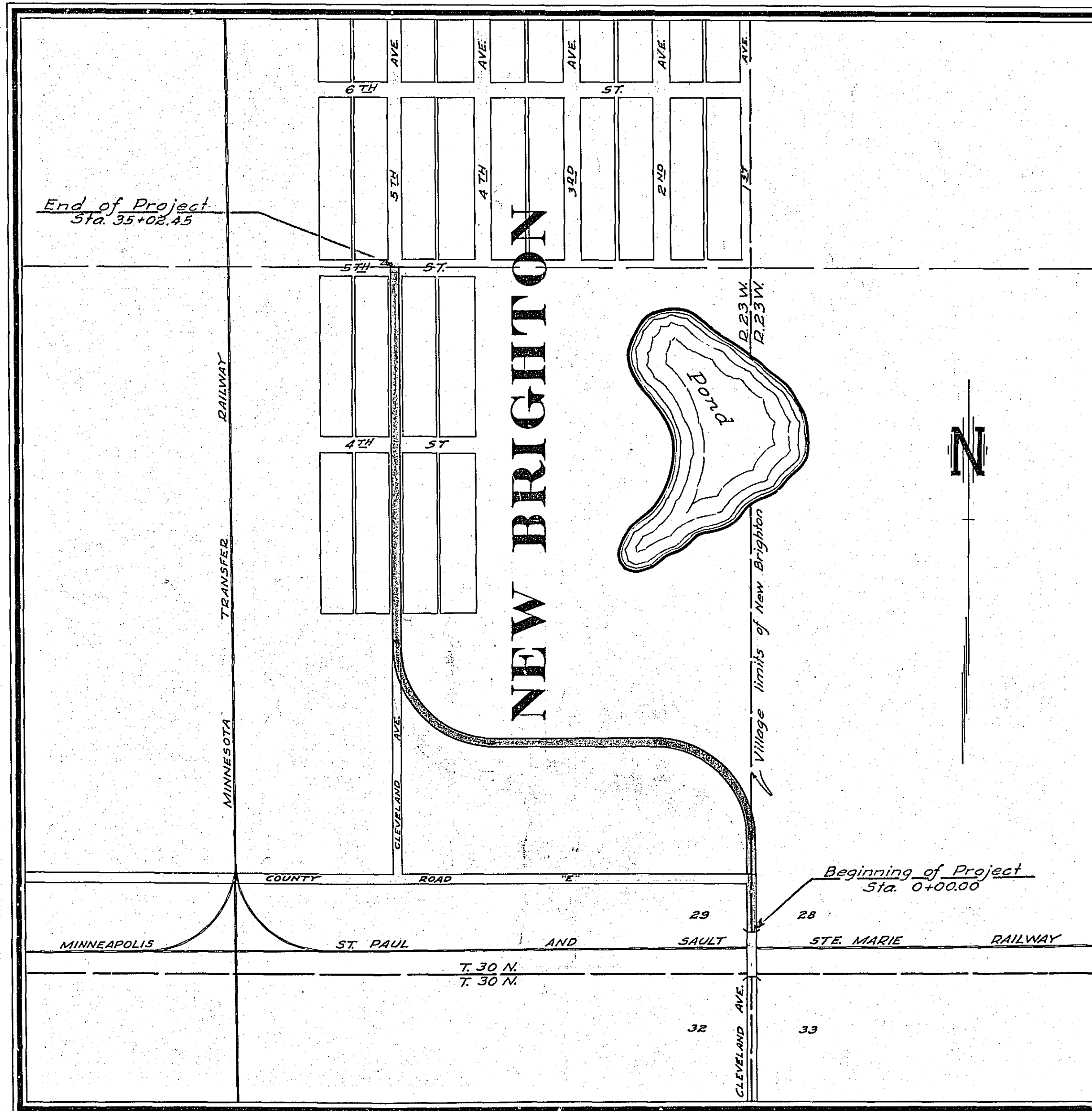
LAYOUT
SCALE, 1 Inch = 400 Feet

INDEX OF SHEETS

Sheet No. 1.	Title Sheet and Layout Map
" No. 2.	Typical Cross-Sections and Statement
" No. 3.	Plan and Profile, Sta. <u>0+00</u> to Sta. <u>35+02.45</u>
" No. 4.	Cross Sections

NOTE: Clay to be hauled from intersection of County Road 5 and Anoka Cutoff 2.26 miles from Sta. 35+02.45.

NOTE: Gravel to be furnished and loaded by Ramsey Co. Hauled from McMenemy which is approximately 8.75 miles from Sta. 0+00.



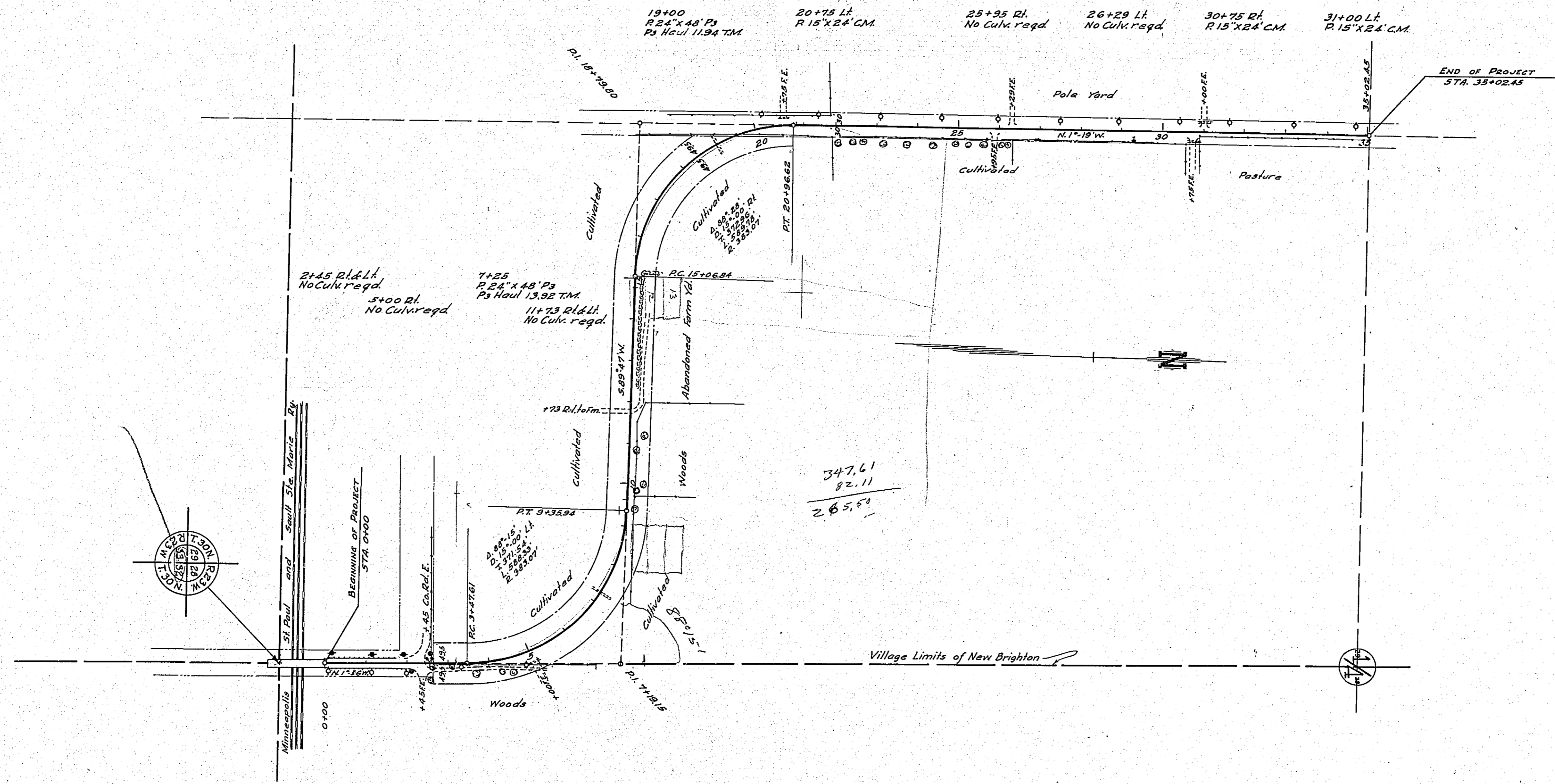
RECEIVED FIRST	4/30/27
RETURNED TO ENGR	
RECEIVED RECORD	
TO DIVISION ENGR	
APPROVED	
FIELD OFFICE ENGR	
FILED	

PLAN
27-141
INDEX

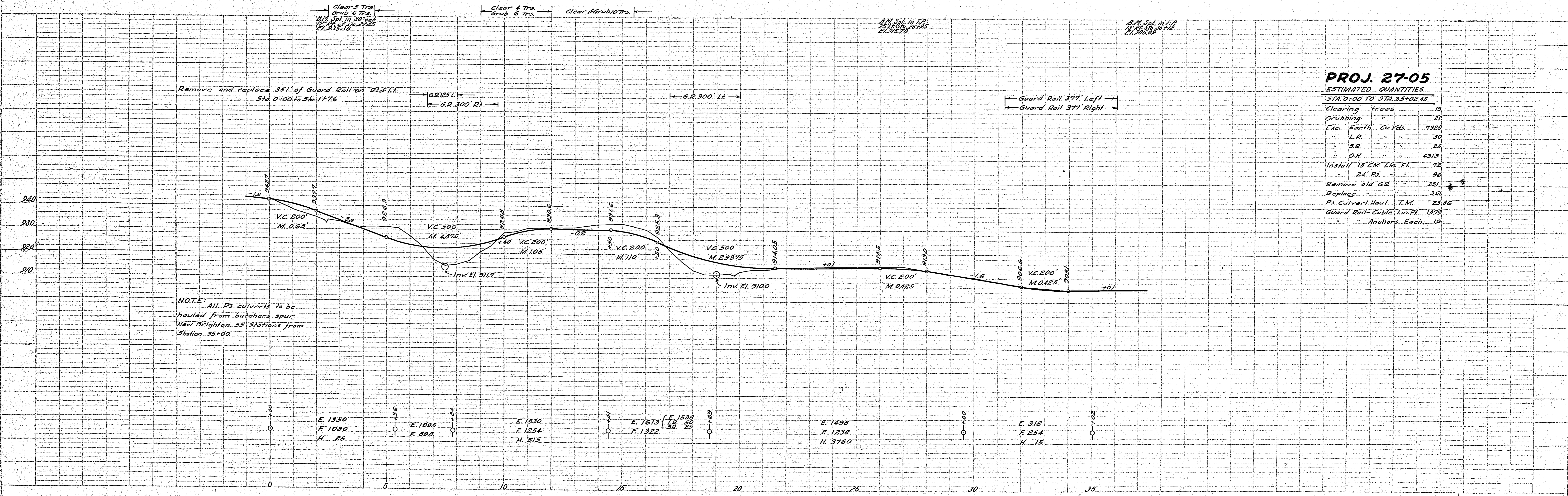
Planned by Paul Coates
HIGHWAY ENGINEER FOR _____ COUNTY.
Recommended for Approval J. J. Larson
DIVISION ENGINEER
Recommended for Approval H. A. Chapman
CONSTRUCTION ENGINEER
Approved Apr. 30, 1927 J. W. Ellison
CHIEF ENGINEER & DEPUTY COMMISSIONER

PLAN	SURVEYED	DATE
	PLOTTED	BY
	ALIGNED	
	CHECKED	
	BY	
	NO.	

PROFILE	SURVEYED	DATE
	PLOTTED	BY
	ALIGNED	
	CHECKED	
	BY	
	NO.	



$$\begin{array}{r} 112.82 \\ 719.15 \\ \hline 831.97 \\ 79.5 \\ \hline 881.47 \end{array}$$



NOTE: All P3 culverts to be hauled from butchers spur, New Brighton, 55 Stations from Station 35+00.

PROJ. 27-05
ESTIMATED QUANTITIES
STA. 0+00 TO STA. 35+02.45

Clearing trees	19
Grubbing	22
Exc. Earth, Cuts	7323
" L.R.	30
" S.R.	25
" O.H.	4315
Install 15" CM Lin. Fl.	72
" 24" Ps	96
Remove old G.R.	351
Replace	351
Ps Culvert Haul T.M.	25.06
Guard Rail-Cable Lin. Fl.	1479
" Anchors Each	10