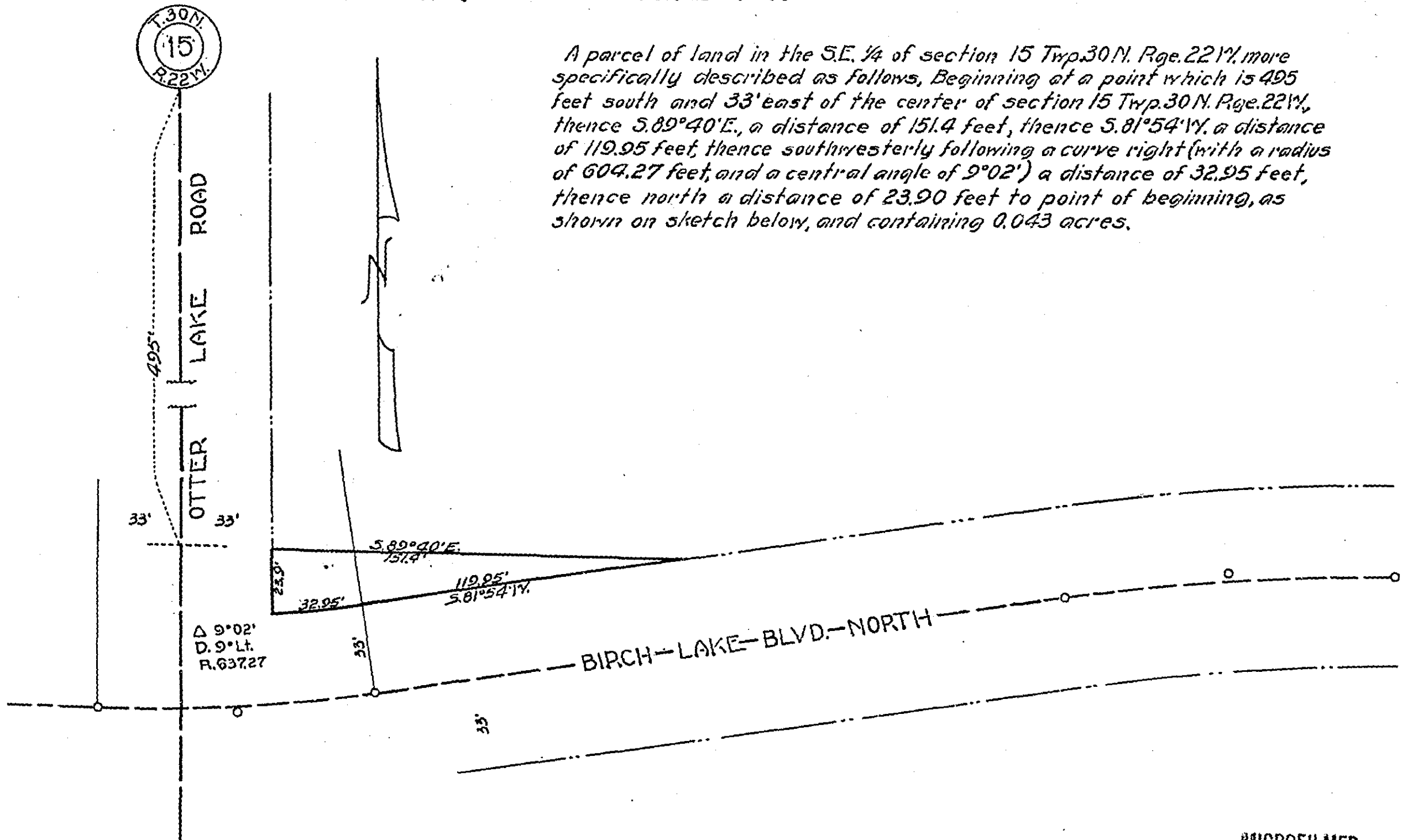


OFFICE OF
 RAMSEY COUNTY ENGINEER
 PROPERTY DEEDED TO
 RAMSEY COUNTY BY CLIFFORD E. LONG
 FOR BIRCH LAKE WELL
 SCALE 1" = 50'

A parcel of land in the S.E. 1/4 of section 15 Twp. 30 N. Rge. 22 W. more specifically described as follows, Beginning at a point which is 495 feet south and 33' east of the center of section 15 Twp. 30 N. Rge. 22 W., thence S. 89° 40' E., a distance of 151.4 feet, thence S. 81° 54' W., a distance of 119.95 feet, thence southwesterly following a curve right (with a radius of 604.27 feet, and a central angle of 9° 02') a distance of 32.95 feet, thence north a distance of 23.90 feet to point of beginning, as shown on sketch below, and containing 0.043 acres.



MICROFILMED
 RAMSEY CO. ENGR.