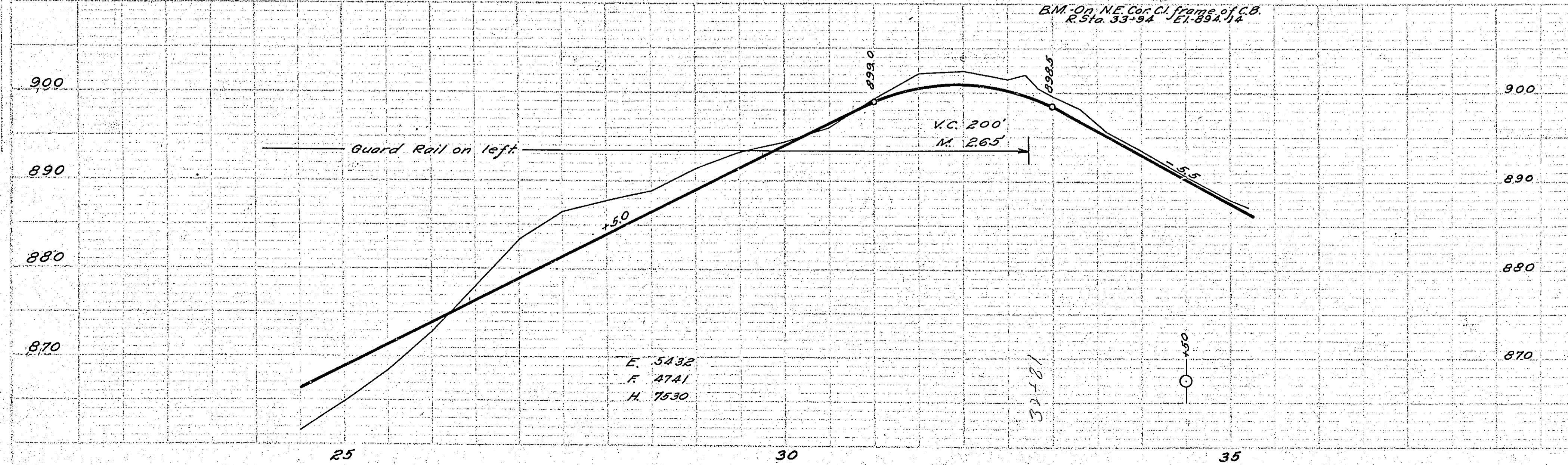
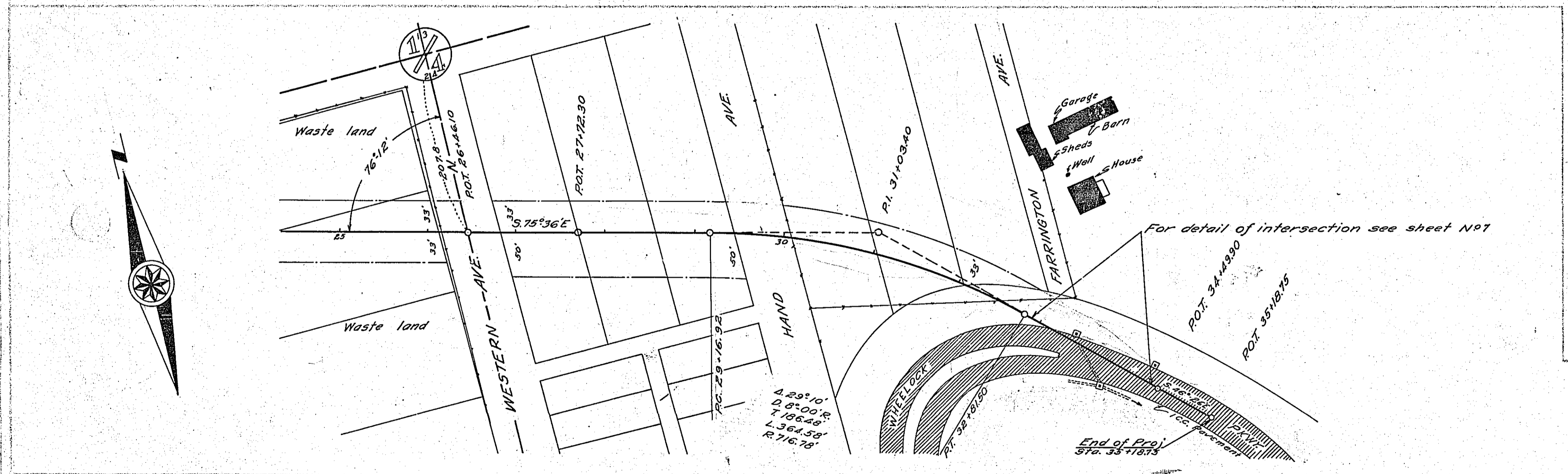
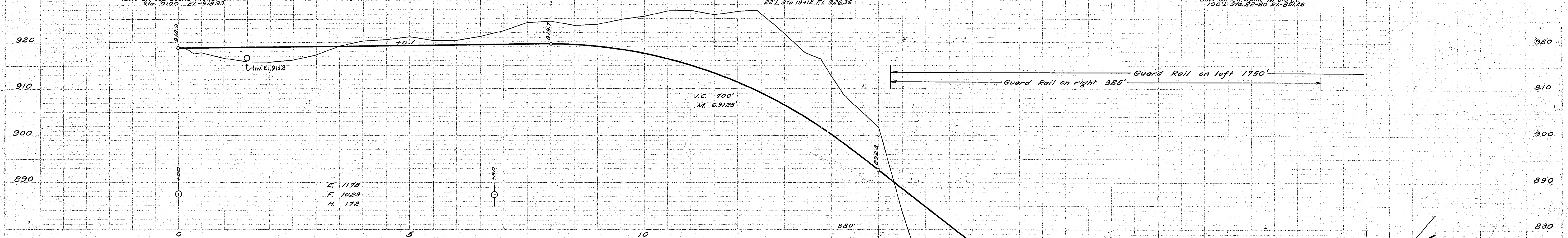
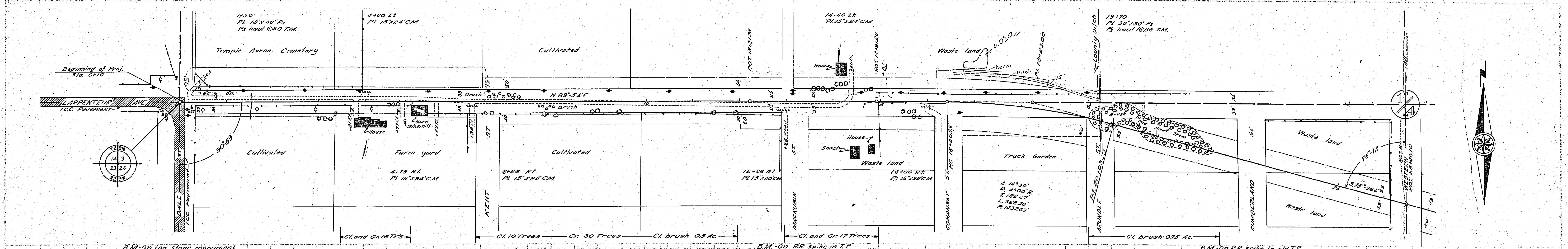


PLAN

DATE	NOV 1924
DRAWN BY	J. H. RAY
CHECKED BY	J. H. RAY
SCALE	AS SHOWN
PROJECT	RAMSEY COUNTY PROJ. NO. 2654
SHEET	NO. 7

PROFILE

DATE	NOV 1924
DRAWN BY	J. H. RAY
CHECKED BY	J. H. RAY
SCALE	AS SHOWN
PROJECT	RAMSEY COUNTY PROJ. NO. 2654
SHEET	NO. 7



ESTIMATED QUANTITIES  
STA. 0+00 TO STA. 35+18.33

Item	Unit	Quantity
Clearing	Trees	33
Grubbing	"	43
Clearing	Acres	1.25
Exc. Earth	Cu Yds.	311.81
- L.R.	"	50
- S.R.	"	25
- O.H.	"	175.52
Install 18" CM	Lin Ft.	168
- 10" CM	"	-
- 18" Ps	"	40
- 30" Ps	"	60
Haul Ps	T.M.	23.48
Remove old Curb	Lin Ft.	230
Combined curb & gutter - straight	Lin Ft.	115
- " " " " " 5' Radius	"	13
Remove catch basin	"	2
Replace catch basin	"	1
Guard rail - Cable	Lin Ft.	2675
- anchor blocks, Complete	"	4

CONVENTIONAL SIGNS & ABBREVIATIONS

STATE LINE	-----	EXCAVATION	-----	F
COUNTY LINE	-----	EMBANKMENT	-----	F
TOWNSHIP LINE	-----	OVERHAUL	-----	H
SECTION LINE	-----	SURFACING	-----	S
CITY, VILLAGE, OR BOROUGH	-----	GUARD RAIL	-----	GR
FENCE LINE	-----	INTERSECTION ANGLE	-----	A
RIGHT-OF-WAY LINE	-----	RADIUS	-----	R
TRAVELLED WAY	-----	ELEVATION	-----	EI
RAILROADS	-----	VERTICAL CURVE	-----	VC
RETAINING WALL	-----	BENCH MARK	-----	B.M.
BASE OR SURVEY LINE	-----	SECTIONAL CONCRETE CULVERT	-----	P.1
LEVEE	-----	CORRUGATED METAL CULVERT	-----	C.M.
GRAVEL PIT	-----	CULVERT HAUL	-----	P.H.
SAND PIT	-----	TON MILES	-----	T.M.
CLAY PIT	-----	IN PLACE	-----	P
ROCK QUARRY	-----	IN PLACE	-----	INP
CULVERTS	-----	REPLACE	-----	Rep
PLAIN	-----	RIGHT	-----	R
WITH FACEWALLS	-----	LEFT	-----	L
WITH WINGWALLS	-----	HAND DITCHING	-----	H.D.
DROP INLET	-----	POINT OF CURVE	-----	PC
POWER POLE LINE	-----	POINT OF TANGENT	-----	PT
TELEPHONE OR TELEGRAPH LINE	-----	POINT OF INTERSECTION	-----	P.I.
MARSH	-----	SPECIAL EXCAVATION	-----	SE
HEDGE, BRUSH, OR TIMBER	-----	SPECIAL FLOWING	-----	SP
GROUND ELEVATION	-----	TELEPHONE POLE	-----	Tel.P.
GRADE ELEVATION	-----			

OFFICE OF COUNTY ENGINEER  
RAMSEY COUNTY

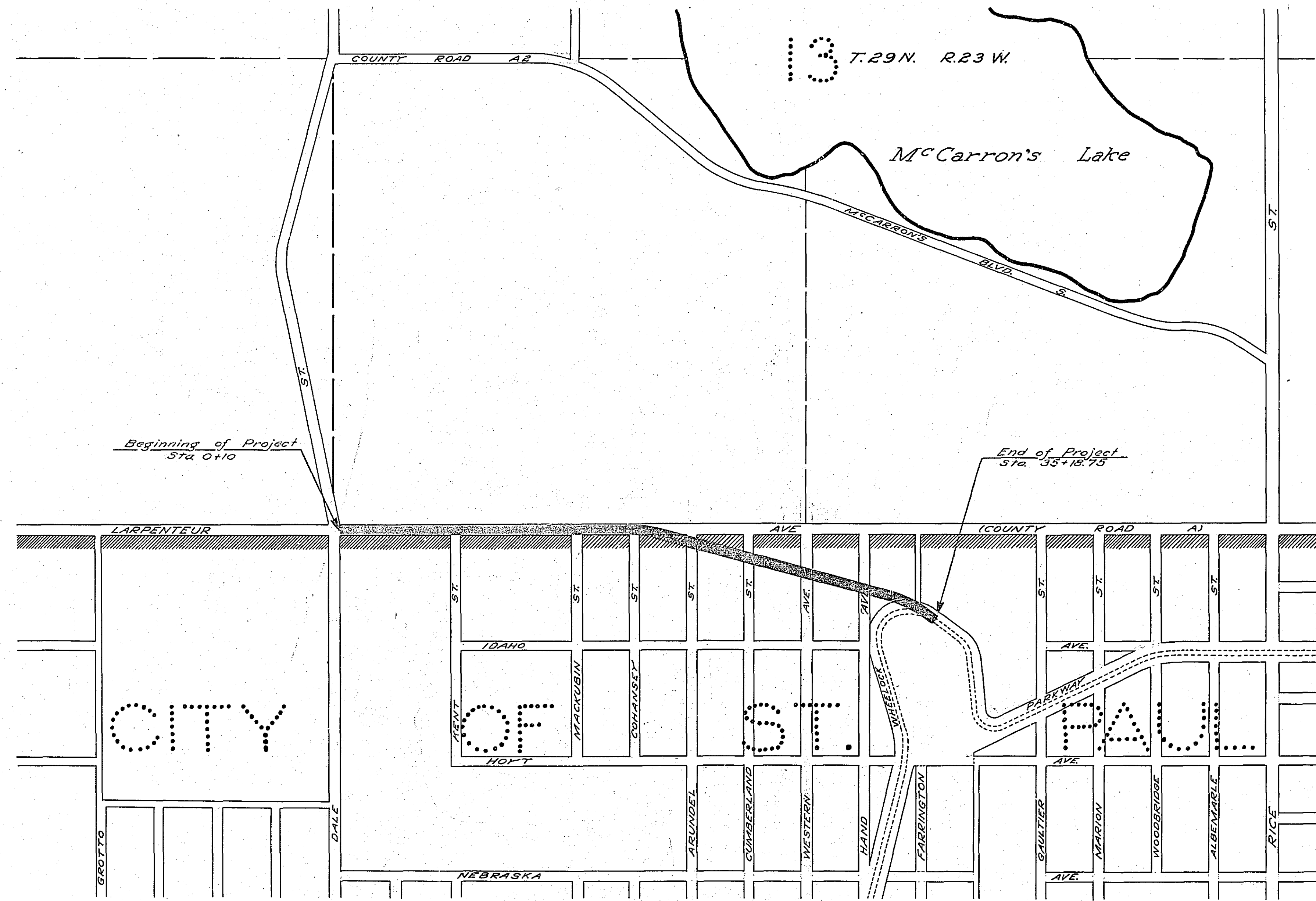
Plan and Profile of County Project No. 26-54

From S.W. cor. Sec. 13-29-R3 To A point approximately 700' east and 500' south of the S.W. cor. sec. 13-29-R3  
Give proper reference to Sections, Township and Range

GROSS LENGTH 3512.75 FEET 0.67 MILES  
LENGTH OF EXCEPTIONS FEET MILES  
NET LENGTH 3512.75 FEET 0.67 MILES  
PLAN, 1 Inch = 100 Feet  
PROFILE, Horz. 1 Inch = 100 Feet. Vert. 1 Inch = 10 Feet  
WORKING PLANS { Horz. 1 Inch = 100 Feet  
Vert. 1 Inch = 10 Feet  
Cross-Sections, 1 Inch = 10 Feet  
LAYOUT  
SCALE, 1 Inch = 500 Feet

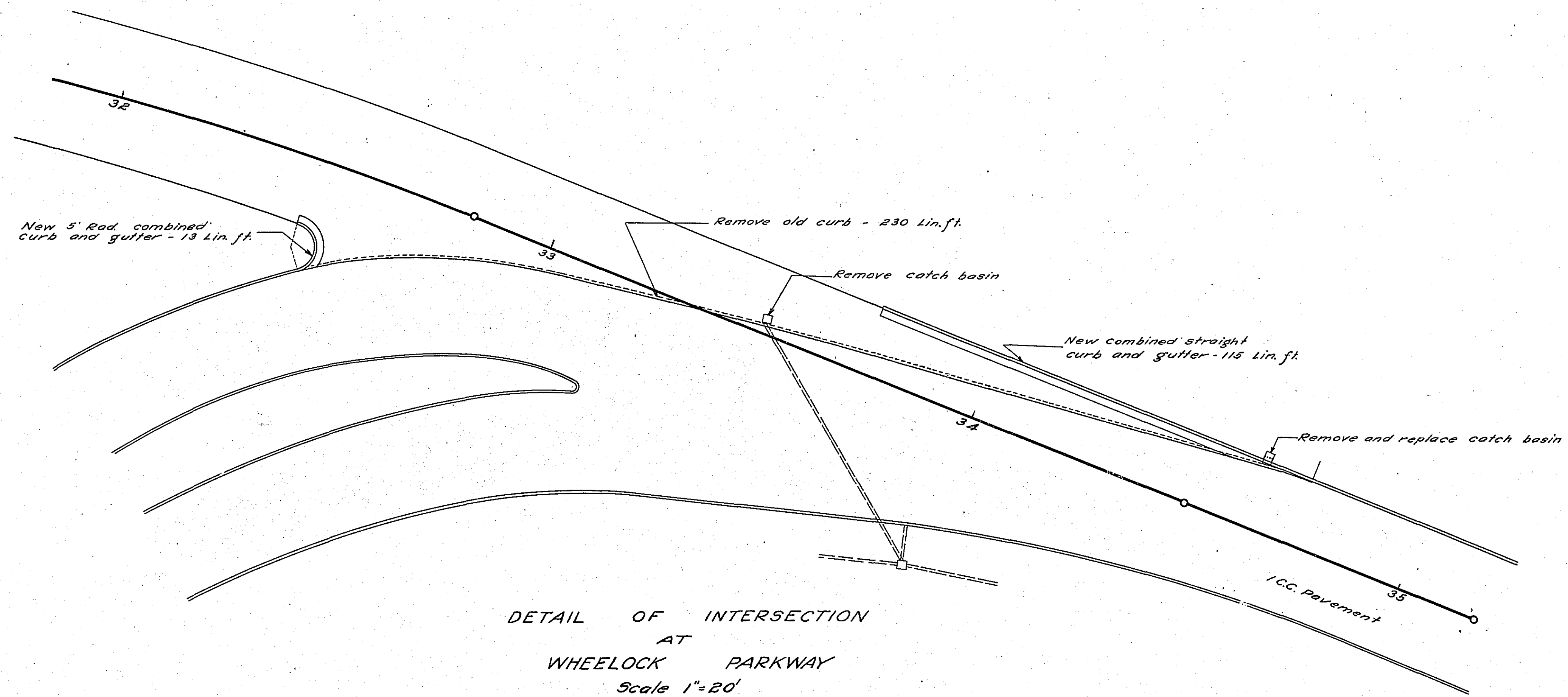
INDEX OF SHEETS

Sheet No. 1. Title Sheet and Layout Map  
" No. 2. Typical Cross-Sections and Statement  
" No. 3. Plan and Profile, Sta. 0+00 to Sta. 35+12.75  
" No. 4, 5, 6. Cross sections  
" No. 7 Details

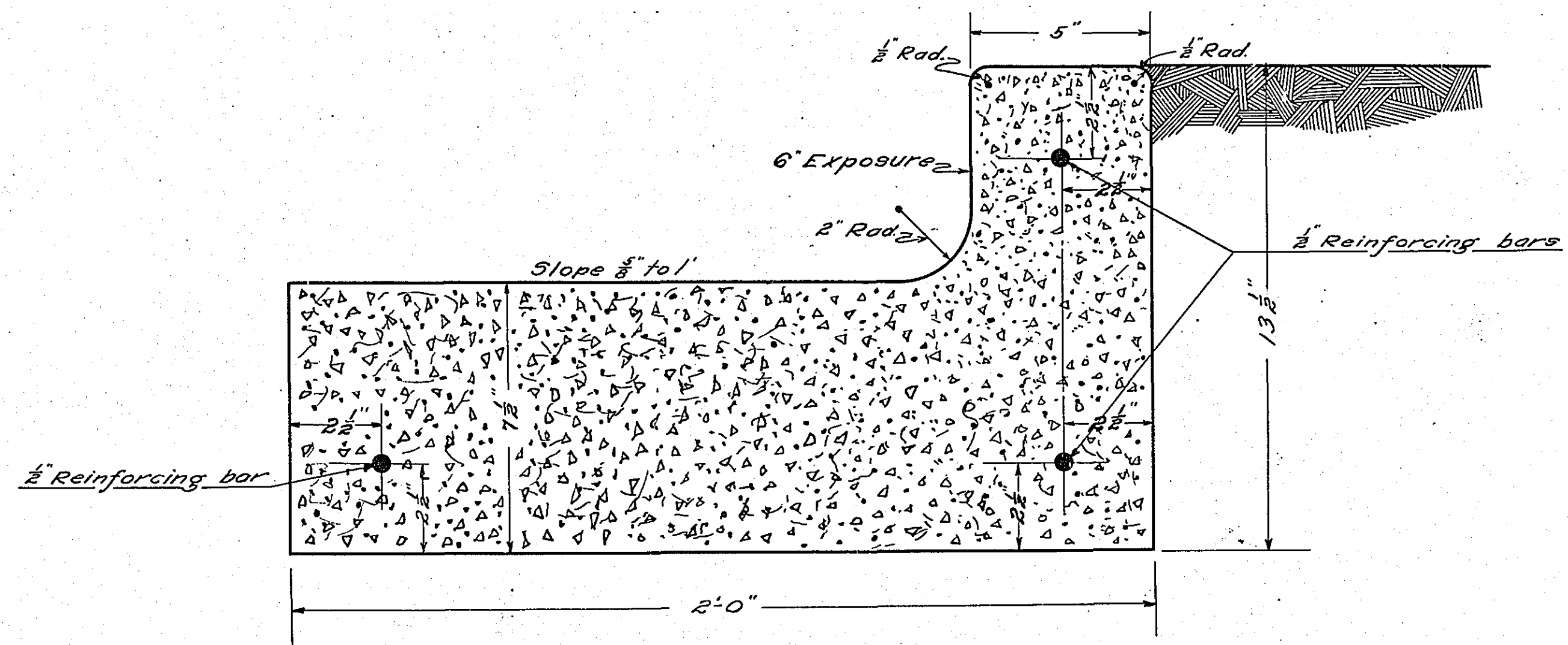


5-1-26  
"D" (Larpenfeur)

Date of Resolution for Preparation of Plans APRIL 21, 1925  
Planned by *A.B. Van Kleeven*  
DESIGNING HIGHWAY ENGINEER  
Recommended for Approval *Percy R. Branstetter*  
CONSTRUCTION ENGINEER  
Plans Approved and Recommended for Consideration *R.F. Willard*  
ACTING COUNTY SURVEYOR  
Approved by County Board 19 \_\_\_\_\_  
CHAIRMAN OF COUNTY BOARD



DETAIL OF INTERSECTION  
AT  
WHELOCK PARKWAY  
Scale 1"=20'



DETAIL OF COMBINED CURB AND GUTTER  
Scale 1/2"=1'

Opening in curb at catch basin  
to be same as original.

4901

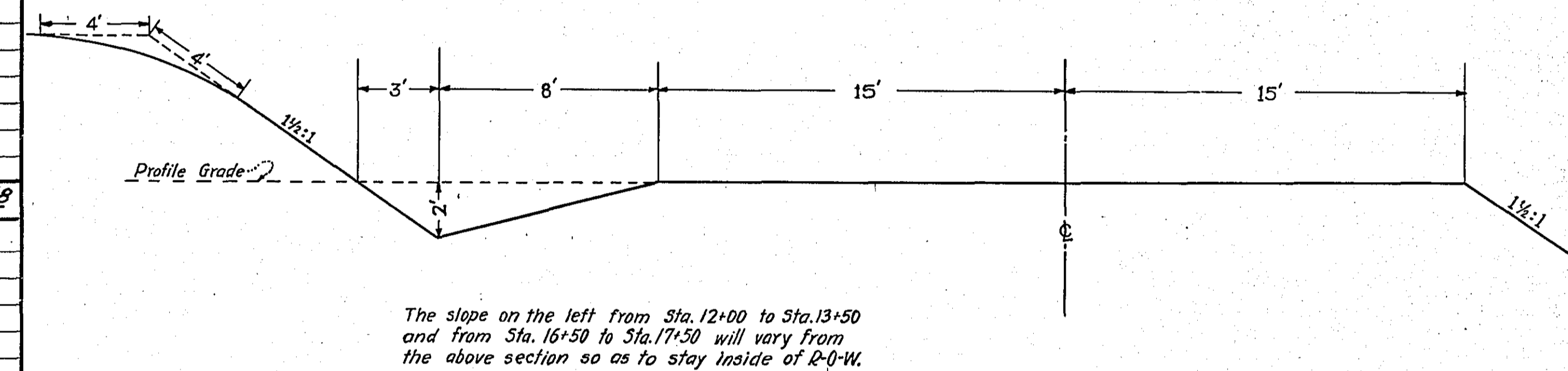
**DETAILS**

STATEMENT OF ESTIMATED QUANTITIES AND COSTS.

Table with columns: ITEM, UNIT, MILE, TOTAL ESTIMATED QUANTITIES, ESTIMATED UNIT PRICES, AMOUNTS, TOTALS. Includes sections for GRADING, PORTABLE CULVERTS, GRAVEL HAUL, GRAVEL MATERIAL, PAVEMENT CONSTRUCTION, STRUCTURES, and MISCELLANEOUS.

TYPICAL CROSS SECTIONS AND DETAILS

Small table with columns: FED. ROAD DIST. NO., STATE, FED. AID PROJ. NO., SEC., FISCAL YEAR, SHEET NO., TOTAL SHEETS.



The slope on the left from Sta. 12+00 to Sta. 13+50 and from Sta. 16+50 to Sta. 17+50 will vary from the above section so as to stay inside of P-Q-W.

GRAND TOTAL

\$ 12018 85

4901