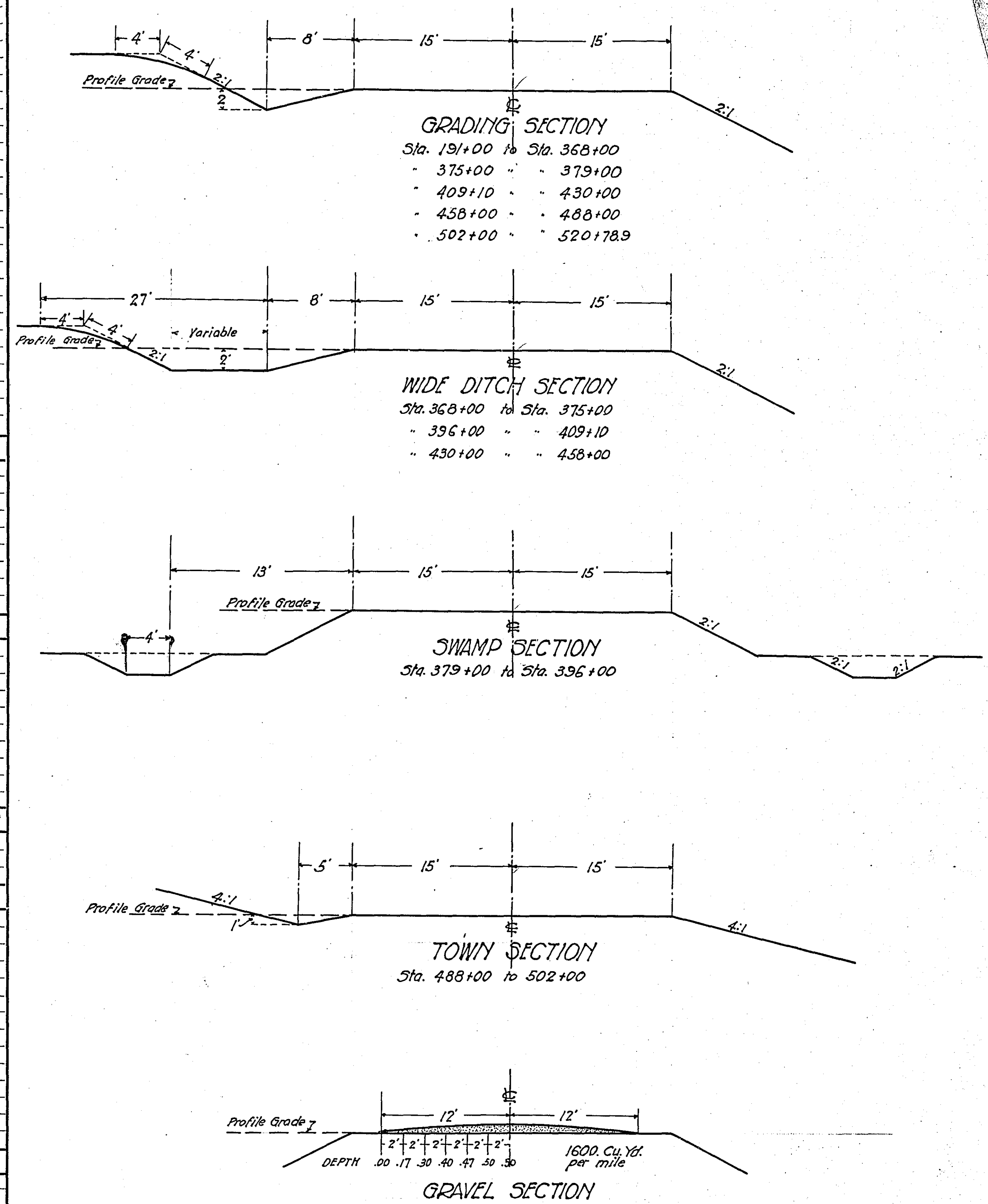


STATEMENT OF ESTIMATED QUANTITIES AND COSTS.

ITEM	UNIT	MILE 1		MILE 2		MILE 3		MILE 4		MILE 5		MILE 6		TOTAL ESTIMATED QUANTITIES	ESTIMATED UNIT PRICES	AMOUNTS	TOTALS
		Sta. 191+00 to Sta. 249+22	Sta. 249+22 to Sta. 304+00	Sta. 304+00 to Sta. 354+24	Sta. 354+24 to Sta. 410+25	Sta. 410+25 to Sta. 465+00	Sta. 465+00 to Sta. 520+78	Sta. 520+78 to Sta. 575+00	Sta. 575+00 to Sta. 630+00	Sta. 630+00 to Sta. 685+00	Sta. 685+00 to Sta. 740+00	Sta. 740+00 to Sta. 795+00	Sta. 795+00 to Sta. 850+00				
1	Clearing													0.78			
2	Clearing	15	218	104	55									397			
3	Grubbing													0.78			
4	Grubbing	190	282	169	40									686			
5	Excavation - Earth	12461	9410	14889	19148	16315	3018							75241			
6	Excavation - Loose Rock	50	50	50	50	1864	308							2372			
7	Excavation - Solid Rock	25	25	25	25	186	18							304			
8	Excavation - Overhaul	37893	7028	7463	36540	206654	27670							323248			
9	Exc. Channel change	300			200									500			
10	Hand Ditching													1038			
11	Clearing brush		0.21											0.25			
12	Special ext. gr. sep.													286			
13	Tile Drain																
14	Porous Back Fill Material																
15	Stone Rip-Rap																
16	Stone Rip-Rap																
17	Install																
18	Install																
19	Install																
20	Install																
21	Install																
22	Install																
23	Install C.M. 12"																
24	Install C.M. 15"																
25	Install 24" P3	120		40	60	40	40							40			
26	Install 24" P3	88	126	100	100	84	160							420			
27	Install 30" P3													498			
28	Install 36" P3													132			
29	P1 Culvert Haul	65.83	99.30	95.27	45.21	37.55											
30	P3 Culvert Haul																
31																	
32																	
TOTAL ESTIMATED COST OF GRADING (IN 'TOTALS' COLUMN)																\$ 34918 32	
33	Culv. Material																
34	Culv. Material																
35	Culv. Material																
36	Culv. Material																
37	C.M. Culv. Material 12"																
38	C.M. Culv. Material 15"	120		40	60	40	40							40			
39	P3 Culv. Material 24"	88	126	100	100	84	160							420			
40	P3 Culv. Material 30"													498			
41	P3 Culv. Material 36"													132			
TOTAL ESTIMATED COST OF PORTABLE CULVERT MATERIAL (IN 'TOTALS' COLUMN)																\$ 2471 18	
42	Gravel Pit Stripping																
43	Screening																
44	Loading																
45	Hauling	1760	1664	1520	1712	1632	1696							400			
46	Shaping & Compacting	2728	4360	5110	6215	7072	5885							9984			
47	Shaping & Compacting	111	105	96	108	103	107							31370			
48		259	244	223	251	240	249							630			
49														1466			
50																	
51																	
TOTAL ESTIMATED COST OF GRAVEL HAUL (IN 'TOTALS' COLUMN)																\$ 14,256. 30	
52	Gravel Material F. O. B. PIT																
53	Freight (If any)																
54	Unloading from Cars																
TOTAL ESTIMATED COST OF GRAVEL MATERIAL (IN 'TOTALS' COLUMN)																	
55	Fine Grading - Exc. & Emb.																
56	Shoulders - Earth																
57																	
58																	
59	Pavement																
60	Integral Curb																
61	Sloping Curb																
62	Surface Drain																
63	Surface Drain Basins																
64	Bridge Approach Slabs (Concrete)																
65	Bridge Approach Slabs (Steel)																
66																	
67																	
68																	
TOTAL ESTIMATED COST OF PAVEMENT CONSTRUCTION (IN 'TOTALS' COLUMN)																	
69	Concrete																
70	Reinforcing Steel																
71	Excavation - Earth																
72	Excavation - Loose Rock																
73	Excavation - Solid Rock																
74	Bridge																
75	Station																
76	Concrete																
77	Reinforcing Steel																
78	Structural Steel																
79	Piling																
80	Temporary Crossing																
81	Removing old Bridge																
82	Remove old conc. culv.																
83																	
84																	
TOTAL ESTIMATED COST OF STRUCTURES (IN 'TOTALS' COLUMN)																\$ 14933 00	
85	Guard Rail																
86	Guard rail anchor b/lks.																
87	Excavation for Gutter																
TOTAL ESTIMATED COST OF MISCELLANEOUS ITEMS (IN 'TOTALS' COLUMN)																\$ 1498 00	
GRAND TOTAL																\$ 68,076. 80	

TYPICAL CROSS SECTIONS AND DETAILS

FED. ROAD DIST. NO.	STATE	FED. AID PROJ. NO.	SEC.	FISCAL YEAR	SHEET NO.
4	MINN.				



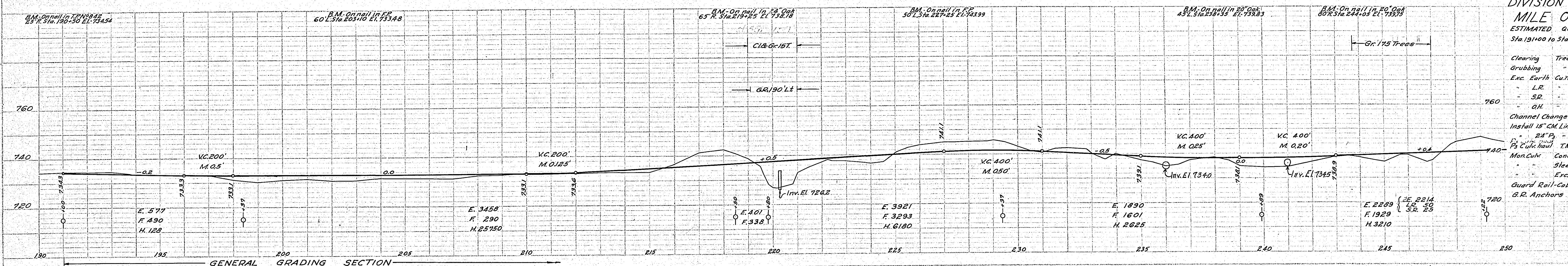
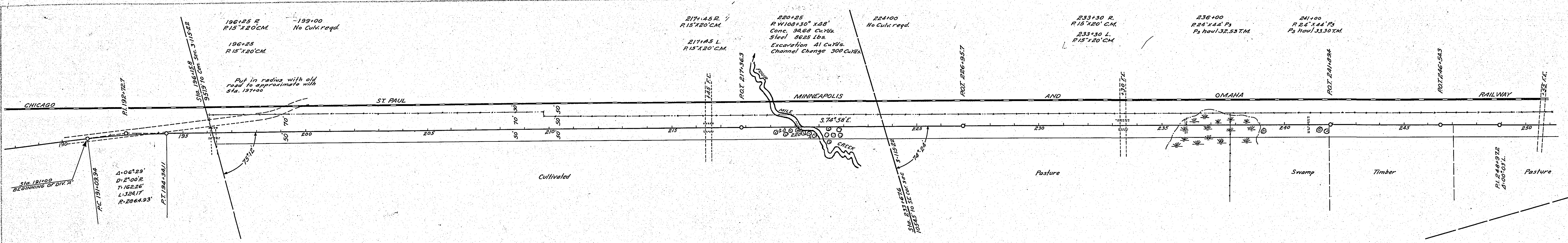
TYPICAL SECTIONS FOR DIVISION "A"

4805

* NOTE: BRIDGE ITEMS LISTED UNDER BRIDGE NUMBERS IN MILE COLUMNS REGARDLESS OF LOCATION

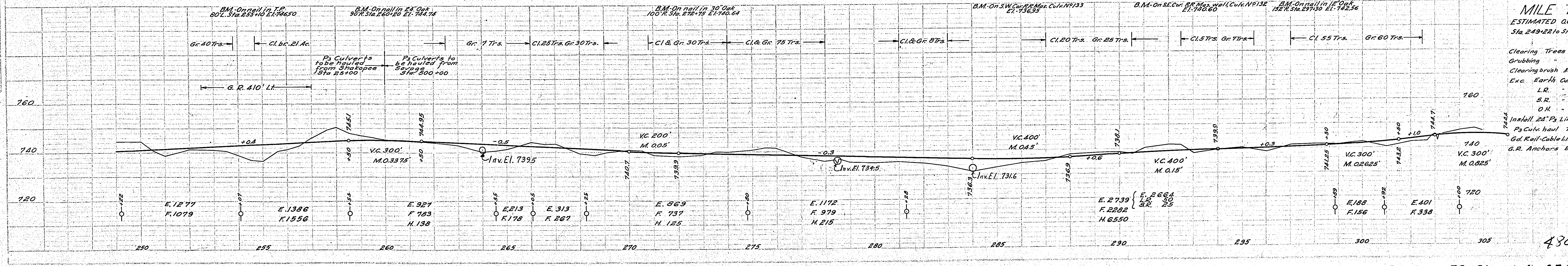
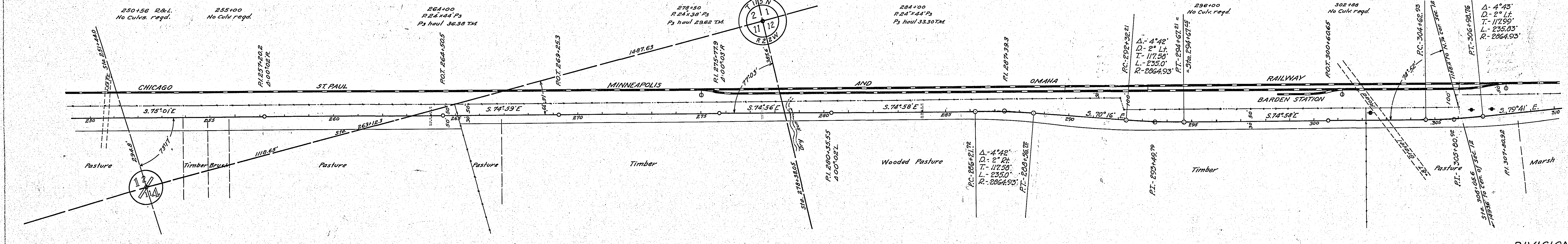
DATE	
BY	
CHECKED	
APPROVED	
REVISIONS	
1	
2	
3	
4	
5	
6	
7	
8	
9	
10	
11	
12	
13	
14	
15	
16	
17	
18	
19	
20	
21	
22	
23	
24	
25	
26	
27	
28	
29	
30	
31	
32	
33	
34	
35	
36	
37	
38	
39	
40	
41	
42	
43	
44	
45	
46	
47	
48	
49	
50	

DATE	
BY	
CHECKED	
APPROVED	
REVISIONS	
1	
2	
3	
4	
5	
6	
7	
8	
9	
10	
11	
12	
13	
14	
15	
16	
17	
18	
19	
20	
21	
22	
23	
24	
25	
26	
27	
28	
29	
30	
31	
32	
33	
34	
35	
36	
37	
38	
39	
40	
41	
42	
43	
44	
45	
46	
47	
48	
49	
50	



DIVISION "A"
MILE ONE
ESTIMATED QUANTITIES
Sta 191+00 to Sta 249+22

Clearing Trees	15
Grubbing "	190
Exc. Earth Cu Yds	18481
L.R.	50
S.R.	25
O.H.	37893
Channel Change C.Ys	300
Install 15" CM Lin Ft	180
24" P's	88
P's Culk haul T.M.	65.33
Mon. Culk Conc. C.Y.	94.68
Steel Lbs 0625	
Exc. C.Y.	41
Guard Rail-Cable Lin Ft	190
G.R. Anchors Each	2



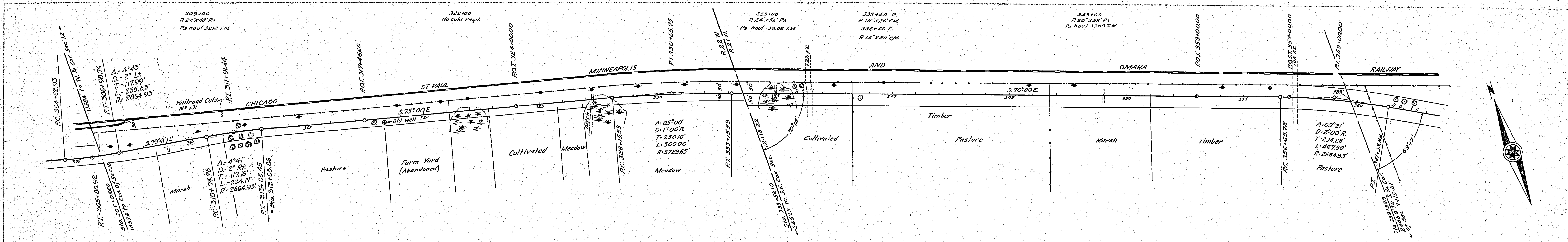
DIVISION "A"
MILE TWO
ESTIMATED QUANTITIES
Sta 249+22 to Sta 304+00

Clearing Trees	218
Grubbing "	282
Clearing brush Acres	2.21
Exc. Earth Cu Yds	9410
L.R.	50
S.R.	25
O.H.	10288
Install 24" P's Lin Ft	126
P's Culk haul T.M.	93.30
G.R. Cable Lin Ft	410
G.R. Anchors Each	2

4305

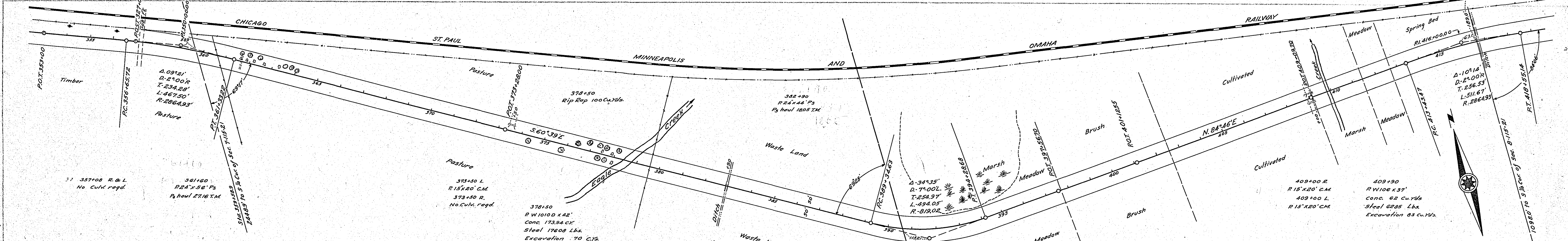
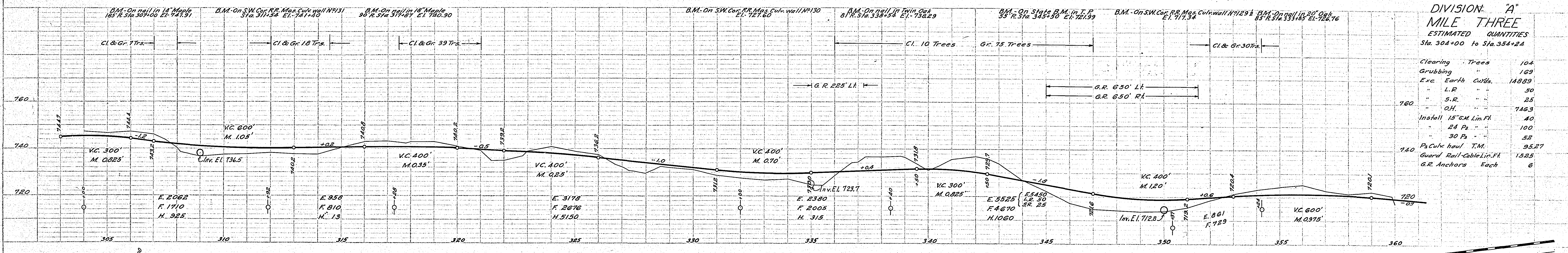
PLAN	DATE
ESTIMATED QUANTITIES	
NOTE: BECK ALIGNMENT CHECKED	
BY: [Signature]	
DATE: [Date]	

PROFILE	DATE
ESTIMATED QUANTITIES	
NOTE: BECK ALIGNMENT CHECKED	
BY: [Signature]	
DATE: [Date]	



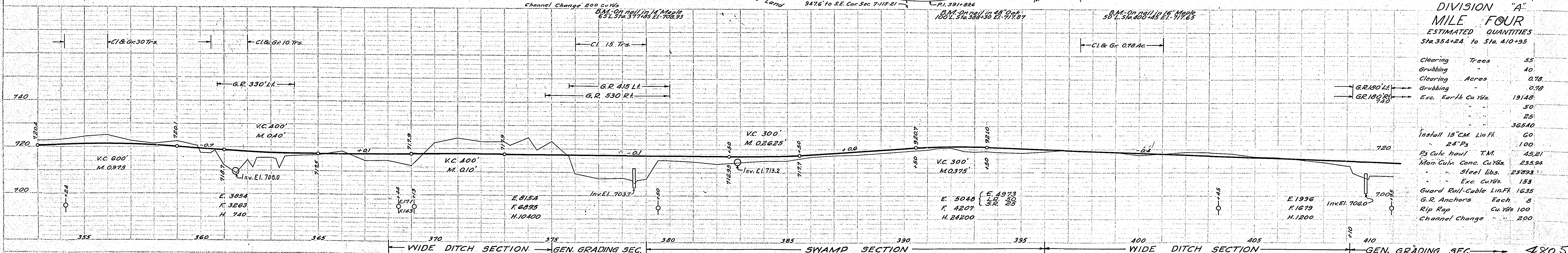
DIVISION "A" MILE THREE
ESTIMATED QUANTITIES
Sta. 304+00 to Sta. 354+24

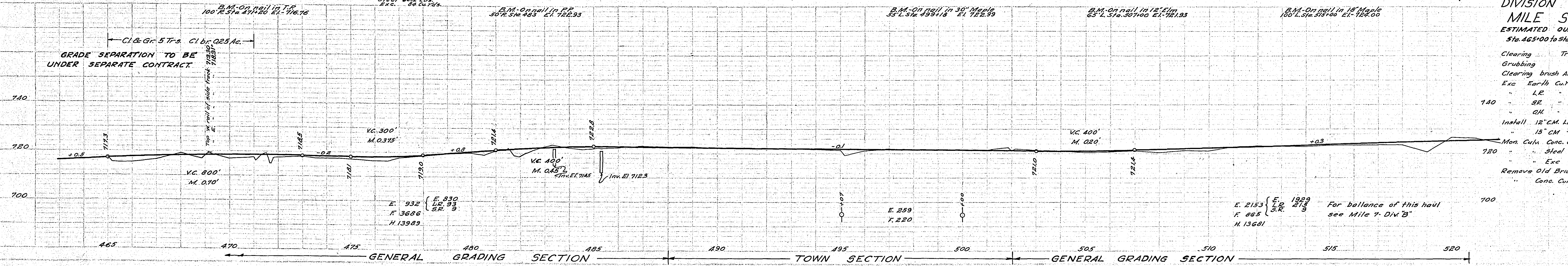
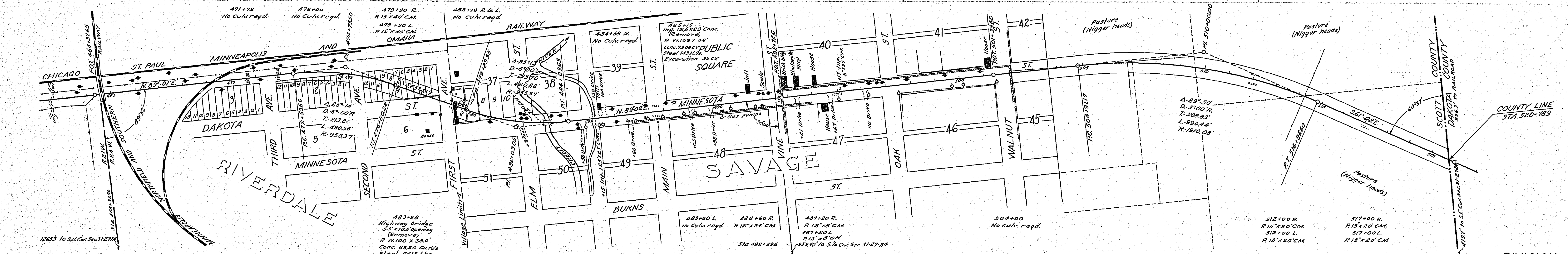
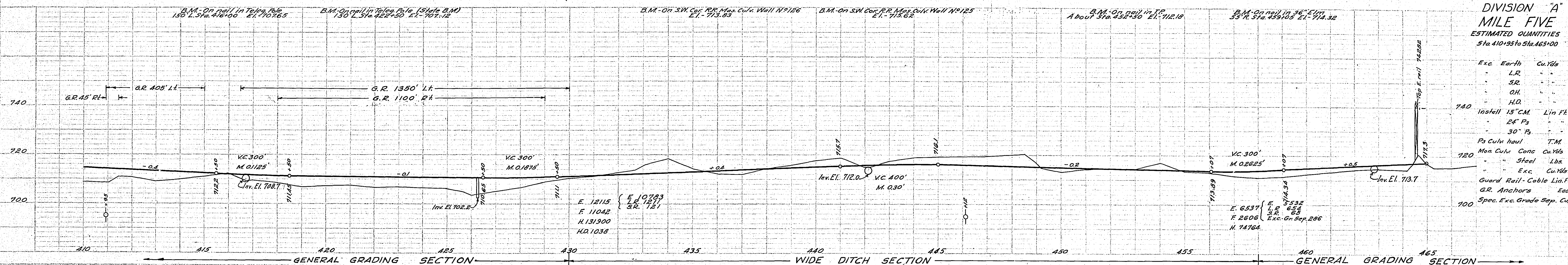
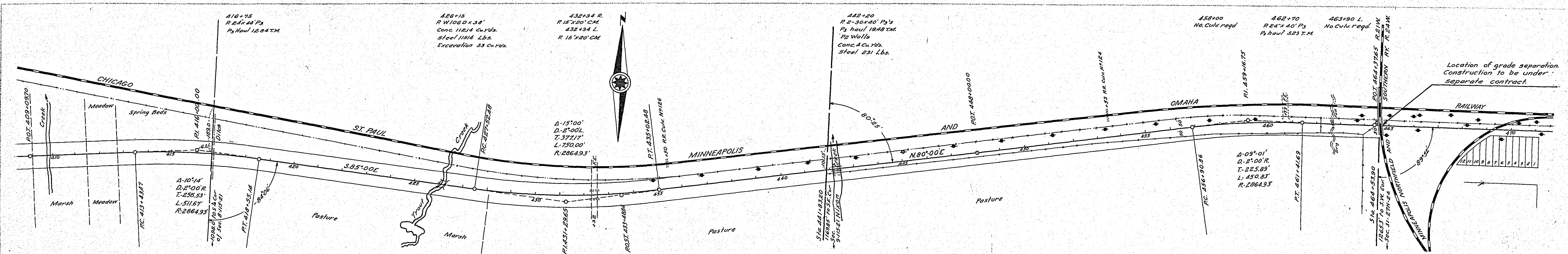
Clearing	Trees	104
Grubbing	"	189
Exc.	Earth Cu Yds.	14839
L.R.	"	50
S.R.	"	25
O.H.	"	7463
Install	15" CM Lin. Ft.	40
	24" Ps	100
	30 Ps	52
	Ps Culk haul T.M.	95.27
	Guard Rail-Cable Lin. Ft.	1325
	G.R. Anchors Each	6



DIVISION "A" MILE FOUR
ESTIMATED QUANTITIES
Sta. 354+24 to Sta. 410+95

Clearing	Trees	55
Grubbing	"	40
Clearing	Acres	0.78
Grubbing	"	0.78
Exc.	Earth Cu Yds.	19148
L.R.	"	50
S.R.	"	25
O.H.	"	36540
Install	15" CM Lin. Ft.	60
	24" Ps	100
	Ps Culk haul T.M.	45.81
	Mon. Culk Conc. Cu Yds.	235.94
	Steel Libs.	23293
	Exc. Cu Yds.	153
	Guard Rail-Cable Lin. Ft.	1635
	G.R. Anchors Each	8
	Rip Rap Cu Yds	100
	Channel Change	200





PLAN
 CHECKED BY
 DATE

PROFILE
 CHECKED BY
 DATE

PLAN	SURVEYED	PLANNED	CHECKED
NO.	DATE	BY	BY
10	1932	J. H. WILSON	J. H. WILSON
NOTE: BOOKS, PLANS, AND INSTRUMENTS CHECKED BY J. H. WILSON			

PROFILE	SURVEYED	PLANNED	CHECKED
NO.	DATE	BY	BY
10	1932	J. H. WILSON	J. H. WILSON
NOTE: BOOKS, PLANS, AND INSTRUMENTS CHECKED BY J. H. WILSON			

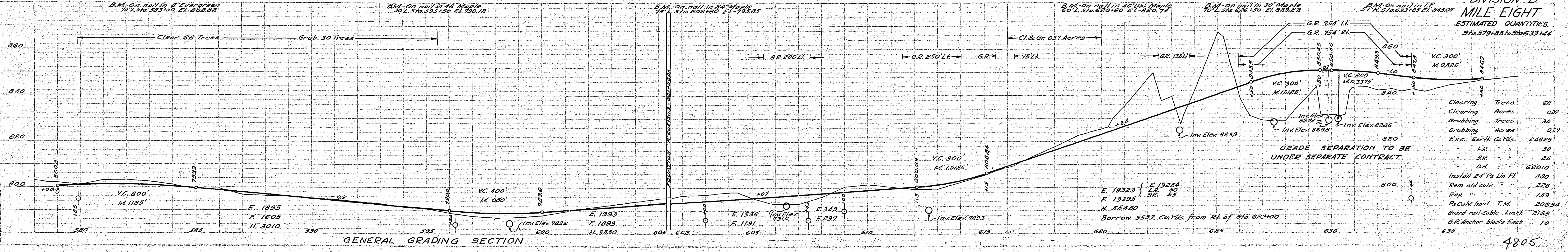
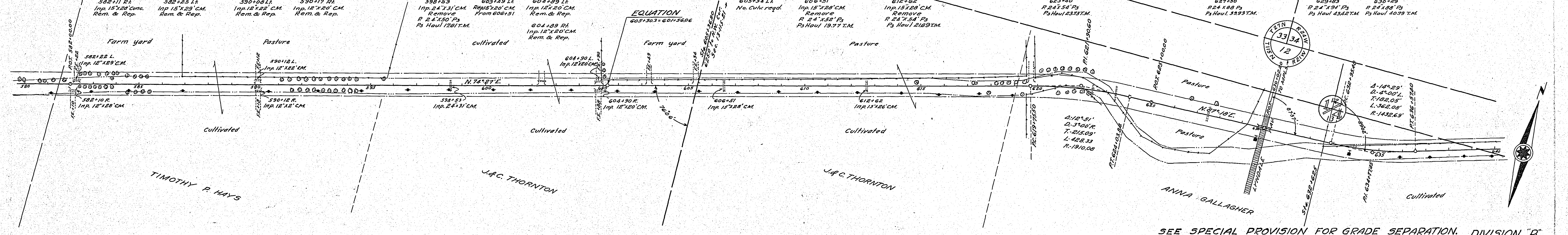
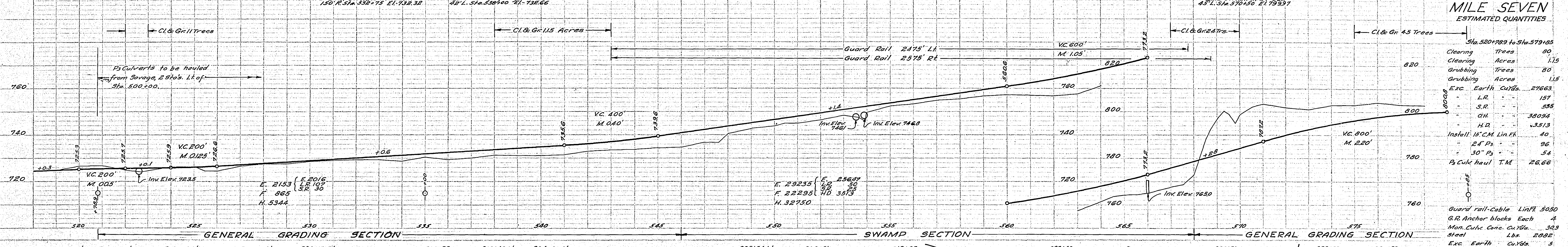
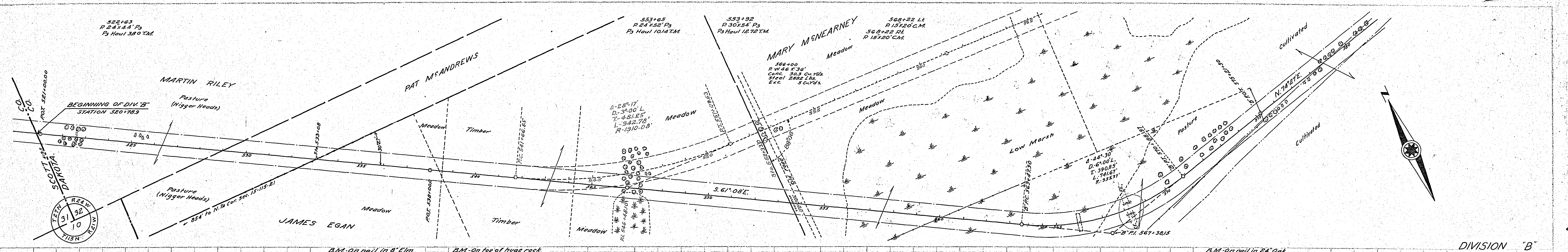
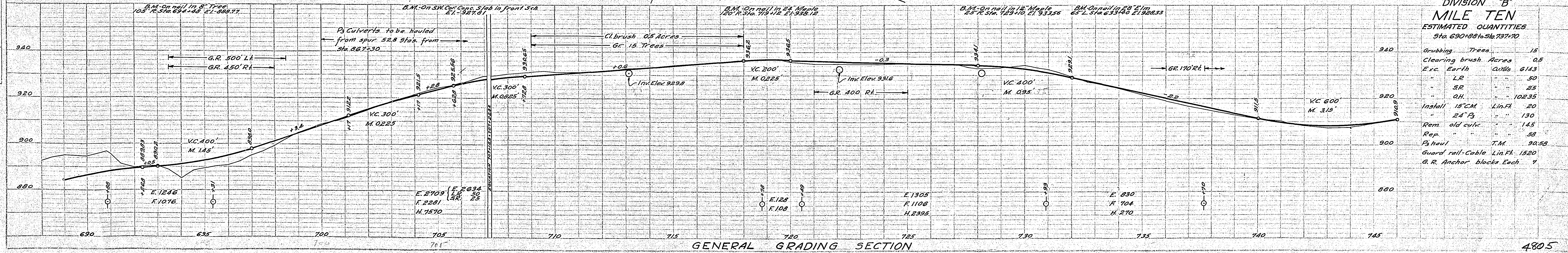
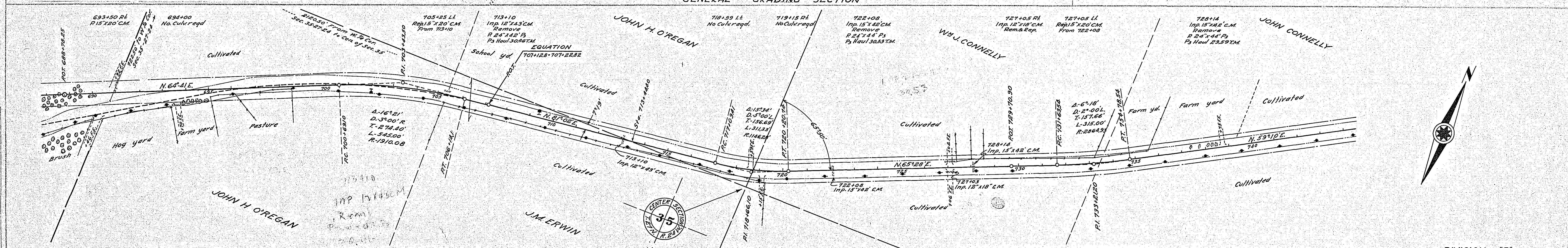
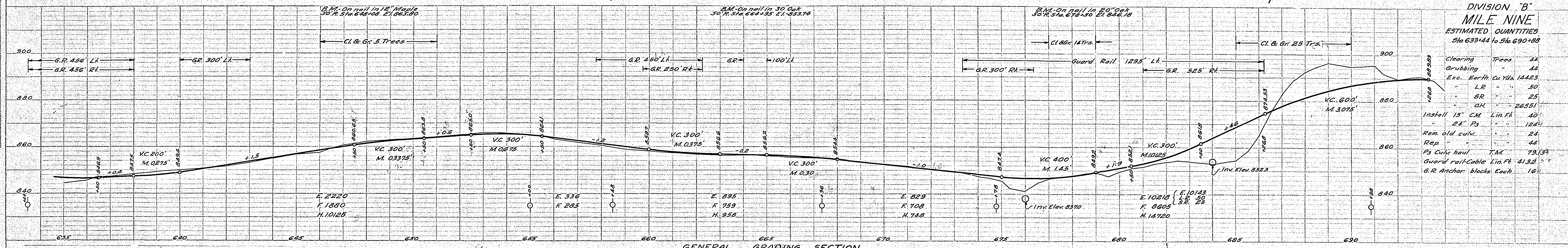
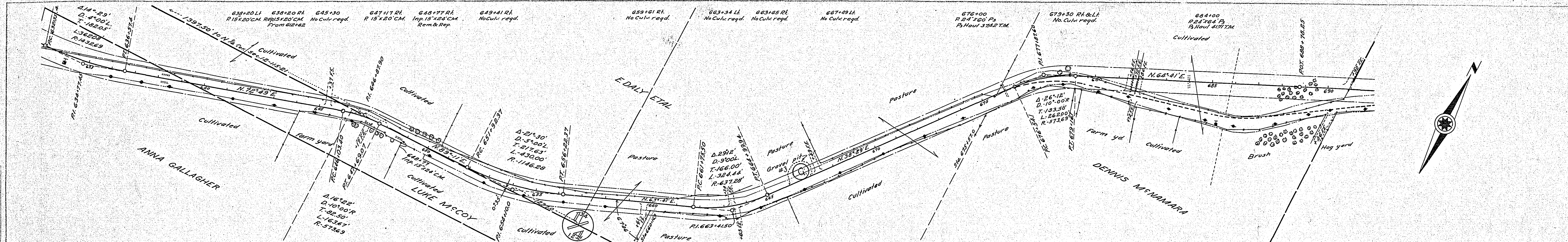


PLATE 2-PLAN-PROFILE 6, 7, 8 & 9 STANDARDS
 REPAIRED BY SEVER COMPANY, NEW YORK

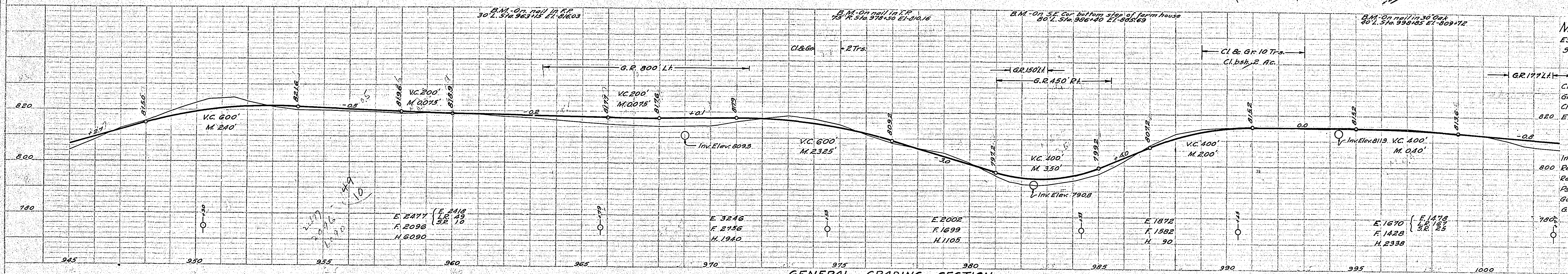
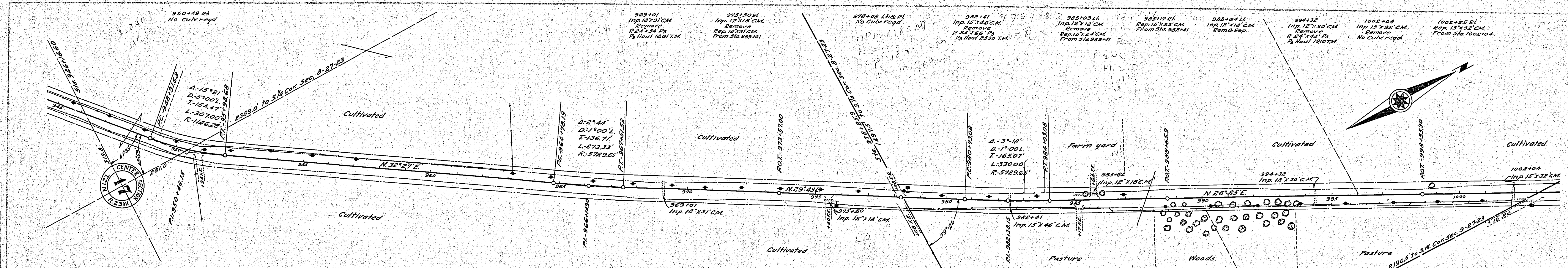
PLAN	DATE	BY
SURVEYED		
NOTE BOOK		
ALIGNED CHECKED		
ST. OF WAY CHECKED		

PROFILE	DATE	BY
SURVEYED		
NOTE BOOK		
ALIGNED CHECKED		
ST. OF WAY CHECKED		



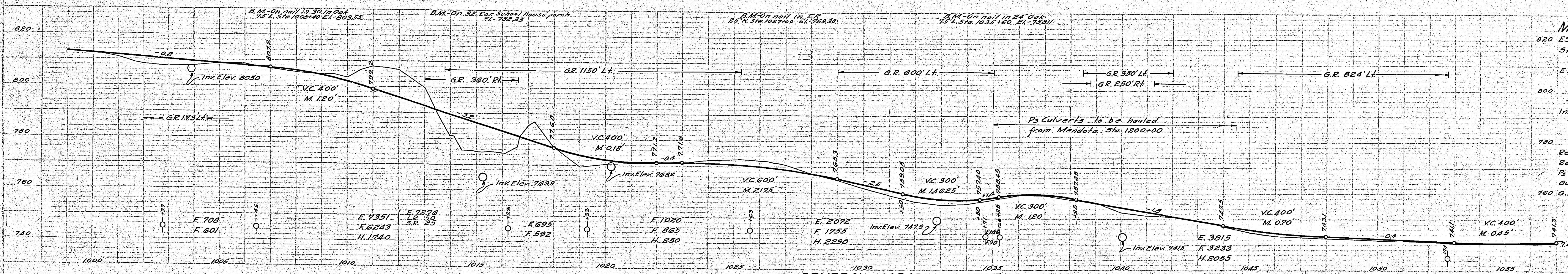
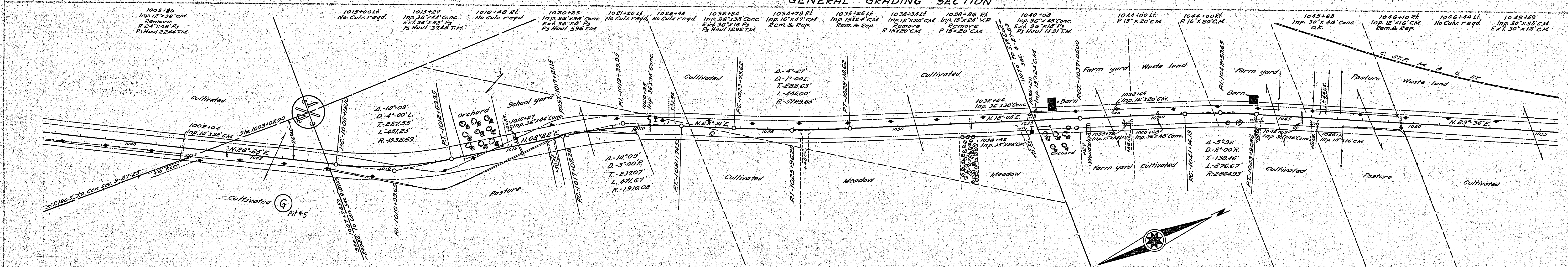
DATE	
BY	
REVISION	
NOTED	
NOTE BOOK	
ALIGNMENT CHECKED	
FT. OF WALL CHECKED	
NO.	

DATE	
BY	
REVISION	
NOTED	
NOTE BOOK	
ALIGNMENT CHECKED	
FT. OF WALL CHECKED	
NO.	



DIVISION "B"
MILE FIFTEEN
ESTIMATED QUANTITIES
Sta. 950+30 to Sta. 1002+77

Clearing Trees	12
Grubbing	12
Clear. bsh Acres	0.2
Exc. Earth Cu Yds	11016
LR	216
SR	35
OH	11563
Install 24" Ps Lin.Ft	164
Rem. old Culk	193
Rep	127
Ps Culk haul T.M	63.61
Guard rail Lin.Ft	1597
GR Anchors Each	7

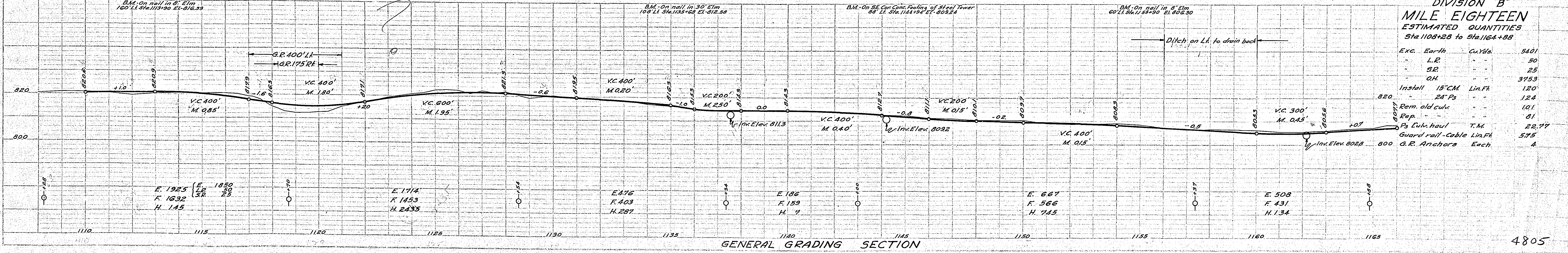
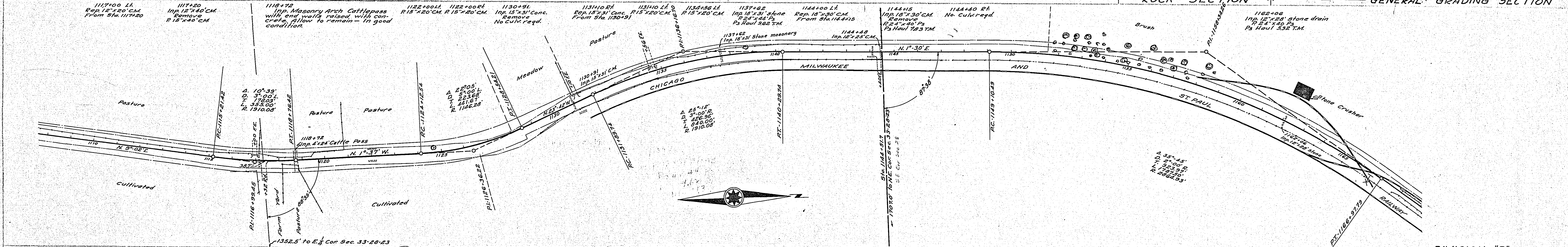
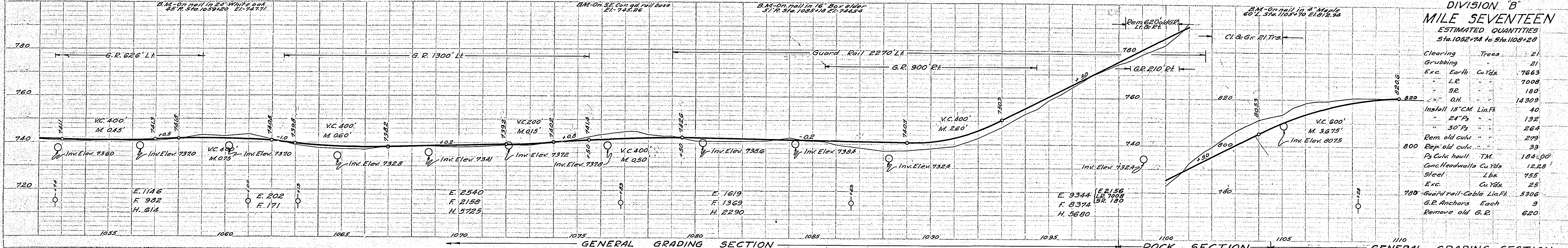
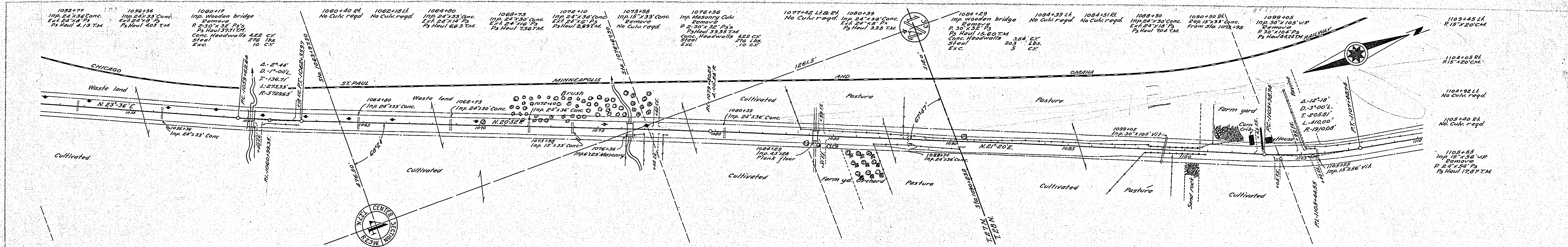


DIVISION "B"
MILE SIXTEEN
ESTIMATED QUANTITIES
Sta. 1002+77 to Sta. 1052+72

Exc. Earth Cu Yds	15692
LR	50
SR	25
OH	6335
Install 18" CM Lin.Ft	80
30" CM	12
24" Ps	48
36" Ps	94
Rem. old Culk	167
Rep	87
Ps Culk haul T.M	93.08
Guard rail-Cable Lin.Ft	3701
160 GR Anchors Each	12

PLAN	BY	DATE
DESIGNED		
CHECKED		
NOTED		
NOTE BOOK		
FLIGHT		
NO.		
BY		
DATE		

PROFILE	BY	DATE
DESIGNED		
CHECKED		
NOTED		
NOTE BOOK		
FLIGHT		
NO.		
BY		
DATE		



1180+30 L.H.
R.15°40' C.M.
1187+00
Imp. 2x2 Masonry Drain
F. 1.28 2x18 P.S.
F. 1.41 2x18 T.M.

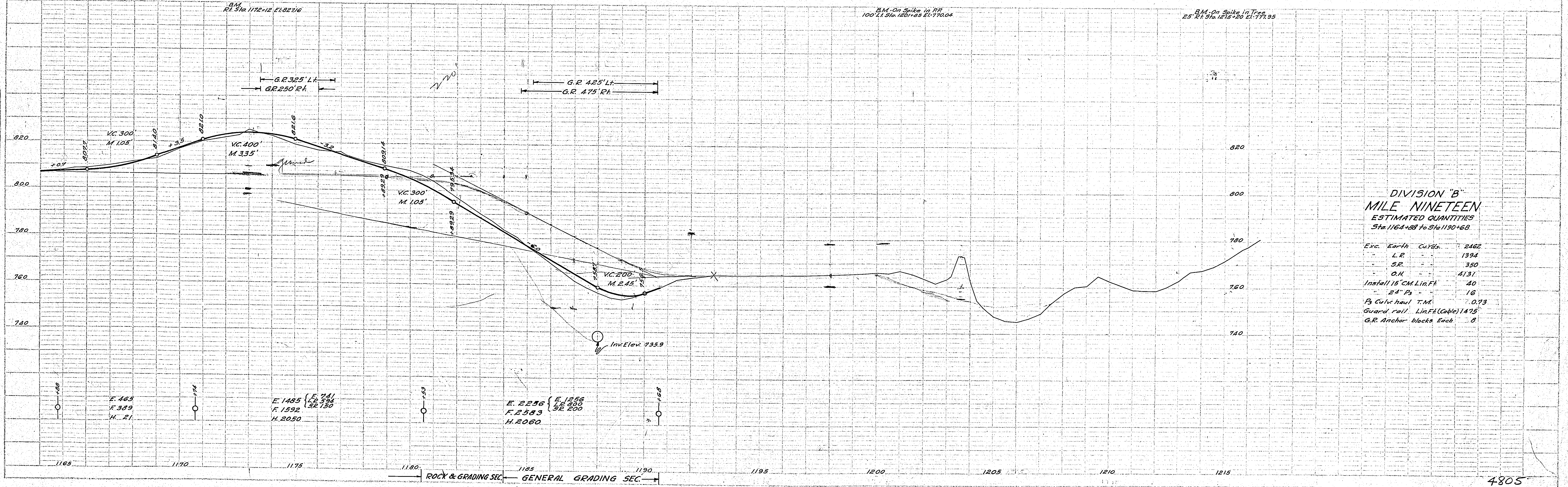
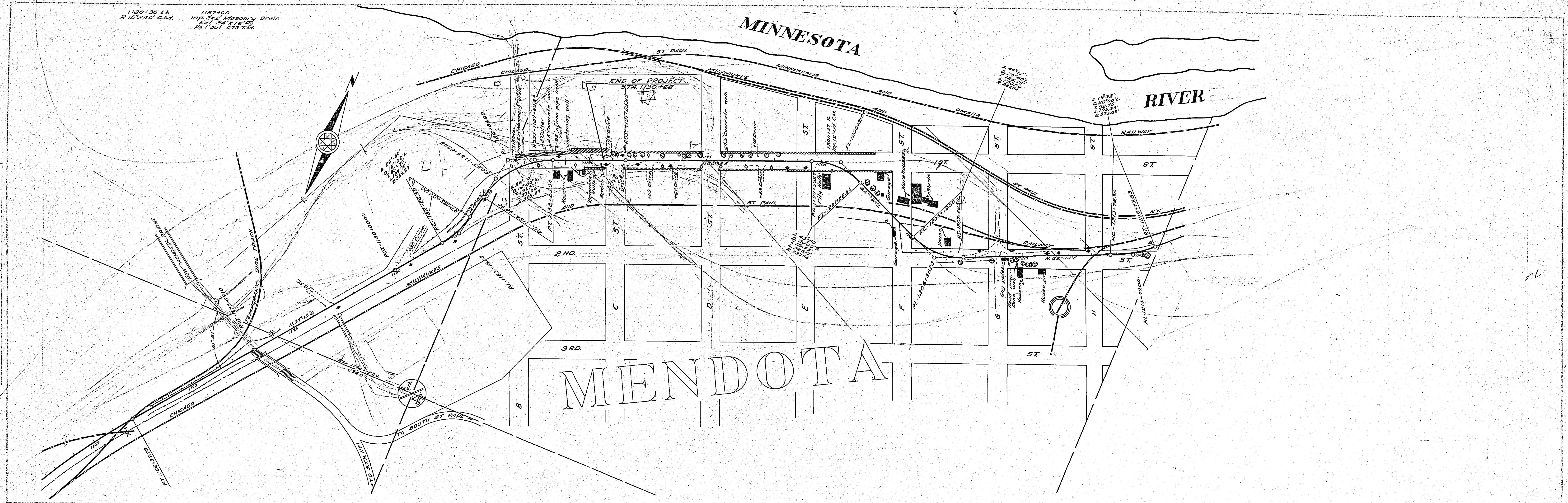
MINNESOTA

RIVER

MENDOTA

PLAN
DATE: 11/15/1913
BY: J. W. H. C. S.
CHECKED: J. W. H. C. S.
APPROVED: J. W. H. C. S.

PROFILE
DATE: 11/15/1913
BY: J. W. H. C. S.
CHECKED: J. W. H. C. S.
APPROVED: J. W. H. C. S.



DIVISION "B"
MILE NINETEEN
ESTIMATED QUANTITIES
Sta. 1164+88 to Sta. 1190+68

Exc. Earth CuYds.	2462
L.R.	1394
S.R.	350
O.H.	4131
Install 15" CH Lin.F.F.	40
24" P ₂	16
P ₃ Cuts haul T.M.	0.73
Guard rail Lin.F.F. (Cable) 1475'	
G.R. Anchor blocks Each	0

CONVENTIONAL SIGNS & ABBREVIATIONS

STATE LINE	-----	EXCAVATION	-----	E
COUNTY LINE	-----	EMBANKMENT	-----	F
TOWNSHIP LINE	-----	OVERHAUL	-----	H
SECTION LINE	-----	SURFACING	-----	S
CITY, VILLAGE, OR BOROUGH	-----	GUARD RAIL	-----	GR
FENCE LINE	-----	INTERSECTION ANGLE	-----	A
RIGHT-OF-WAY LINE	-----	RADIUS	-----	R
TRAVELLED WAY	-----	ELEVATION	-----	E1
RAILROADS	-----	VERTICAL CURVE	-----	KC
RETAINING WALL	-----	BECKH MARK	-----	B.M.
BASE OF SURVEY LINE	-----	SECTIONAL CONCRETE CULVERT	-----	P.C.
LEVEE	-----	CORRUGATED METAL CULVERT	-----	C.M.
GRAVEL PIT	-----	CULVERT HAUL	-----	P.H.
SAND PIT	-----	TON MILES	-----	T.M.
CLAY PIT	-----	IN PLACE	-----	INP.
ROCK QUARRY	-----	REPLACE	-----	REP.
CULVERTS	-----	RIGHT	-----	R
PLAIN	-----	LEFT	-----	L
WITH FACEWALLS	-----	HAND DITCHING	-----	H.D.
WITH WINGWALLS	-----	POINT OF CURVE	-----	P.C.
DROP INLET	-----	POINT OF TANGENT	-----	P.T.
POWER POLE LINE	-----	POINT OF INTERSECTION	-----	P.I.
TELEPHONE OR TELEGRAPH LINE	-----	SPECIAL EXCAVATION	-----	S.E.
MARSH	-----	SPECIAL FLOWING	-----	S.P.
HEDGE, BUSH, OR TIMBER	-----	TELEPHONE POLE	-----	TEL.P.
GROUND ELEVATION	-----			
GRADE ELEVATION	-----			

OFFICE OF COUNTY ENGINEER
RAMSEY COUNTY

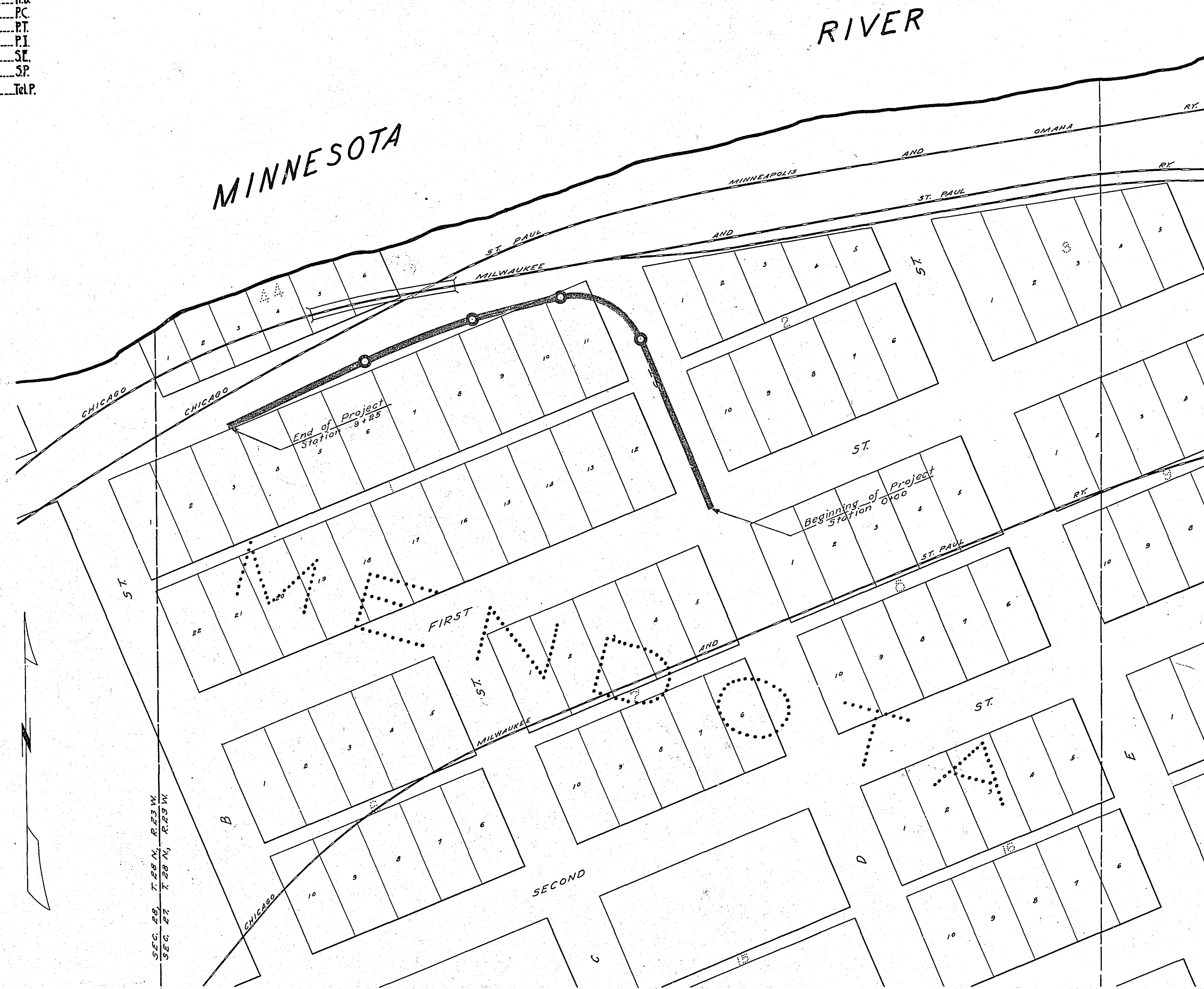
Plan and Profile of County Project No. 26-53-C

From Sec. 24 of T. 25 N. R. 23 W. Sec. 24 To A point 10.5M. A.P.M. of N.E. Sec. of Lot 3, Bk. 1 - Mendota
Give proper reference to Sections, Township and Range

GROSS LENGTH 925 FEET .18 MILES
LENGTH OF EXCEPTIONS FEET MILES
NET LENGTH 925 FEET .18 MILES
PLAN, 1 Inch = 50 Feet
PROFILE, Horz. 1 Inch = 50 Feet. Vert. 1 Inch = .5 Feet
WORKING PLANS Horz. 1 Inch = 50 Feet
 Vert. 1 Inch = .5 Feet
 Cross-Sections, 1 Inch = 10 Feet
LAYOUT
SCALE, 1 Inch = .100 Feet

INDEX OF SHEETS

Sheet No. 1.	Title Sheet and Layout Map
" No. 2.	Typical Cross-Sections and Statement
" No. 3.	Plan and Profile, Sta. <u>0+00</u> to Sta. <u>9+25</u>
" No. 4.	Cross Sections



Plans approved J. Swan
Dakota County Engineer
Approved by Dakota County Board April 26 1926
W.G. Beecher
Chairman of Board
Date of Resolution for Preparation of Plans July 1st 1925
Planned by A.D. Van Kesteren
DESIGNING HIGHWAY ENGINEER
Recommended for Approval Percy R. Benoit
CONSTRUCTION ENGINEER
Plans Approved and Recommended for Consideration R.F. Walbridge
ACTING COUNTY SURVEYOR
Approved by County Board 19
CHAIRMAN OF COUNTY BOARD

4-15-26
" (26-53-C)

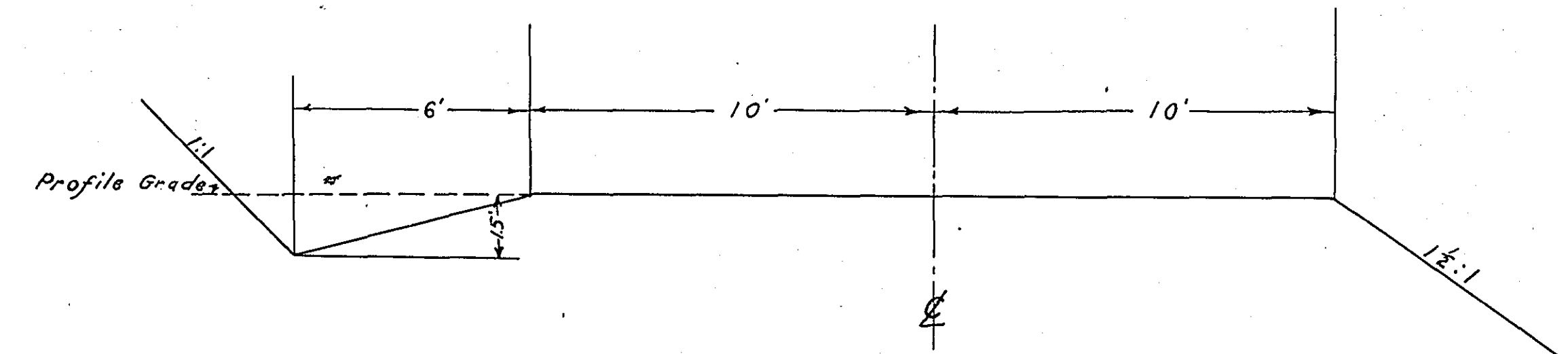
STATEMENT OF ESTIMATED QUANTITIES AND COSTS.

ITEM	UNIT	MILE		MILE		MILE		MILE		MILE		MILE		MILE		TOTAL ESTIMATED QUANTITIES	ESTIMATED UNIT PRICES	AMOUNTS	TOTALS
		Sta. 0+00 to Sta. 2+55	Sta. to Sta.	Sta. to Sta.	Sta. to Sta.	Sta. to Sta.	Sta. to Sta.	Sta. to Sta.	Sta. to Sta.	Sta. to Sta.	Sta. to Sta.	Sta. to Sta.	Sta. to Sta.	Sta. to Sta.					
1	Clearing - brush	Acre	0.25													0.25			
2	Clearing	Tree	6													6			
3	Grubbing	Acre																	
4	Grubbing	Tree	6													6			
5	Excavation - Earth	Cu. Yd.	812													812			
6	Excavation - Loose Rock	Cu. Yd.	300													300			
7	Excavation - Solid Rock	Cu. Yd.	200													200			
8	Excavation - Overhaul	Cu. Yd.	426													426			
9	Special Excavation	Lin. Ft.																	
10	Hand Ditching	Cu. Yd.																	
11	Tile Drain	in. Lin. Ft.																	
12	Tile Drain	in. Lin. Ft.																	
13	Tile Drain	in. Lin. Ft.																	
14	Porous Back Fill Material	Cu. Yd.																	
15	Stone Rip - Rap	Cu. Yd.																	
16	Stone Rip - Rap	Cu. Yd. mile																	
17	Install 12" CM	Lin. Ft.	90													90			
18	Install 24" CM	Lin. Ft.	40													40			
19	Install	Lin. Ft.																	
20	install	Lin. Ft.																	
21	Install	Lin. Ft.																	
22	Install	Lin. Ft.																	
23	Install	Lin. Ft.																	
24	Install	Lin. Ft.																	
25	Install 24" P ₃	Lin. Ft.																	
26	Install 30" P ₃	Lin. Ft.																	
27	Install 36" P ₃	Lin. Ft.																	
28	P ₁ Culvert Haul	Ton Mile																	
29	P ₃ Culvert Haul	Ton Mile																	
30	Reinforcing Steel	Lbs.	152													152			
31	Reinforcing Steel	Lbs.																	
32																			
TOTAL ESTIMATED COST OF GRADING (IN 'TOTALS' COLUMN)																			\$ 962.58
33	CM Culv. Material 12"	Lin. Ft.	90													90			
34	CM Culv. Material 24"	Lin. Ft.	40													40			
35	Culv. Material	Lin. Ft.																	
36	Culv. Material	Lin. Ft.																	
37	Culv. Material	Lin. Ft.																	
38	Culv. Material	Lin. Ft.																	
39	P ₃ Culv. Material 24"	Lin. Ft.																	
40	P ₃ Culv. Material 30"	Lin. Ft.																	
41	P ₃ Culv. Material 36"	Lin. Ft.																	
TOTAL ESTIMATED COST OF PORTABLE CULVERT MATERIAL (IN 'TOTALS' COLUMN)																			\$ 162.12
42	Gravel Pit Stripping	Cu. Yd.																	
43	Screening	Cu. Yd.																	
44	Loading	Cu. Yd.																	
45	Hauling	Cu. Yd. Mile																	
46	Shaping & Compacting	Man Hour																	
47	Shaping & Compacting	Man & Team Hour																	
48																			
49																			
50																			
51																			
TOTAL ESTIMATED COST OF GRAVEL HAUL (IN 'TOTALS' COLUMN)																			
52	Gravel Material F. O. B. Pit	Cu. Yd.																	
53	Freight (If any)	Cu. Yd.																	
54	Unloading from Cars	Cu. Yd.																	
TOTAL ESTIMATED COST OF GRAVEL MATERIAL (IN 'TOTALS' COLUMN)																			
55	Fine Grading - Exc. & Emb.	Cu. Yd.																	
56	Shoulders - Earth	Cu. Yd.																	
57																			
58																			
59	Pavement	Sq. Yd.																	
60	Integral Curb (One Course Concrete)	Lin. Ft.																	
61	Sloping Curb	Lin. Ft.																	
62	Surface Drain	Lin. Ft.																	
63	Surface Drain Basins	Basin																	
64	Bridge Approach Slabs (Square)	Slab																	
65	Bridge Approach Slabs (Rect)	Slab																	
66																			
67																			
68																			
TOTAL ESTIMATED COST OF PAVEMENT CONSTRUCTION (IN 'TOTALS' COLUMN)																			
69	Concrete	Cu. Yd.																	
70	Reinforcing Steel	Lb.																	
71	Excavation - Earth	Cu. Yd.																	
72	Excavation - Loose Rock	Cu. Yd.																	
73	Excavation - Solid Rock	Cu. Yd.																	
74	Bridge	* Bridge No. Br. No.																	
75	Station																		
76	Concrete	Cu. Yd.																	
77	Reinforcing Steel	Lb.																	
78	Structural Steel	Lb.																	
79	Piling	Lin. Ft.																	
80	Temporary Crossing	Lump Sum																	
81	Removing old Bridge	Lump Sum																	
82	Bituminous Surface	Sq. Yd.																	
83																			
84																			
TOTAL ESTIMATED COST OF STRUCTURES (IN 'TOTALS' COLUMN)																			
85	Guard Rail	Lin. Ft.																	
86	Gutter	Lin. Ft.																	
87	Excavation for Gutter	Cu. Yd.																	
TOTAL ESTIMATED COST OF MISCELLANEOUS ITEMS (IN 'TOTALS' COLUMN)																			
GRAND TOTAL																			\$ 1124.68

TYPICAL CROSS SECTIONS AND DETAILS

FED. ROAD DIST. NO.	STATE	FED. AID PROJ. NO.	SEC.	FISCAL YEAR	SHEET NO.	TOTAL SHEETS
4	MINN.					

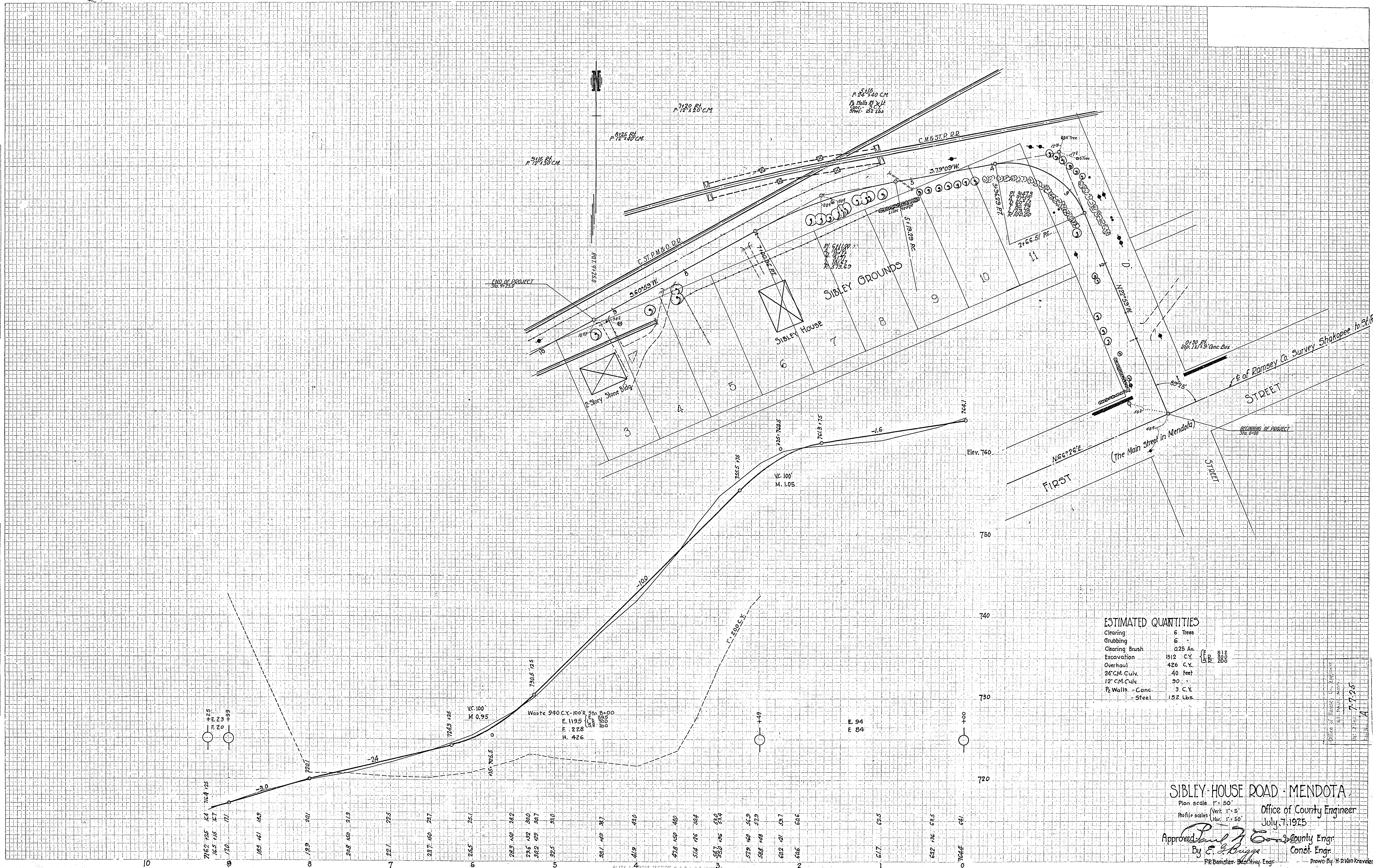
GENERAL GRADING SECTION



* NOTE: BRIDGE ITEMS LISTED UNDER BRIDGE NUMBERS IN MILE COLUMNS REGARDLESS OF LOCATION

FINAL SURVEY PLOTTED
 NOTE BOOK NO. _____
 AREAS CHECKED _____

ORIGINAL SURVEY PLOTTED
 NOTE BOOK NO. _____
 AREAS CHECKED _____



ESTIMATED QUANTITIES

Clearing	6 Trees
Grubbing	6
Clearing Brush	0.25 Ac.
Excavation	1312 C.Y.
Overhaul	426 C.Y.
24" C.M. Culk.	.40 Feet
12" C.M. Culk.	.90
P ₂ Walls - Conc.	3 C.Y.
- Steel	132 Lbs.

SIBLEY HOUSE ROAD - MENDOTA
 Plan scale 1" = 50'
 Profile scales (vert. 1" = 5', Hor. 1" = 50')
 Office of County Engineer
 July 7-1925
 Approved *E. E. Briggs* County Engr.
 By *E. E. Briggs* Const. Engr.
 P. R. Damster, Assoc. Engr.
 Drawn by H. D. Van Krevelen