

CONVENTIONAL SIGNS & ABBREVIATIONS

STATE LINE	-----	EXCAVATION	-----	E
COUNTY LINE	-----	EMBANKMENT	-----	F
TOWNSHIP LINE	-----	OVERHAUL	-----	H
SECTION LINE	-----	SURFACING	-----	S
CITY, VILLAGE, OR BOROUGH	-----	GUARD RAIL	-----	GR
FENCE LINE	-----	INTERSECTION ANGLE	-----	A
RIGHT-OF-WAY LINE	-----	RADIUS	-----	R
TRAVELLED WAY	-----	ELEVATION	-----	EI
RAILROADS	-----	VERTICAL CURVE	-----	VC
RETAINING WALL	-----	BENCH MARK	-----	B.M.
BASE OR SURVEY LINE	-----	SECTIONAL CONCRETE CULVERT	-----	P.C.
LEVEE	-----	CORRUGATED METAL CULVERT	-----	C.M.
GRAVEL PIT	-----	CULVERTY HAUL	-----	P.H.
SAND PIT	-----	TON MILES	-----	T.M.
CLAY PIT	-----	PLACE	-----	P
ROCK QUARRY	-----	IN PLACE	-----	Inv
CULVERTS	-----	REPLACE	-----	Rep
PLAIN	-----	RIGHT	-----	R
WITH FACEWALLS	-----	LEFT	-----	L
WITH WINGWALLS	-----	HAND DITCHING	-----	H.D.
DROP INLET	-----	POINT OF CURVE	-----	P.C.
POWER POLE LINE	-----	POINT OF TANGENT	-----	P.T.
TELEPHONE OR TELEGRAPH LINE	-----	POINT OF INTERSECTION	-----	P.I.
MARSH	-----	SPECIAL EXCAVATION	-----	SE
HEDGE, BRUSH, OR TIMBER	-----	SPECIAL PLOWING	-----	SP
GROUND ELEVATION	-----	TELEPHONE POLE	-----	Tel P.
GRADE ELEVATION	-----			

OFFICE OF COUNTY ENGINEER  
RAMSEY COUNTY

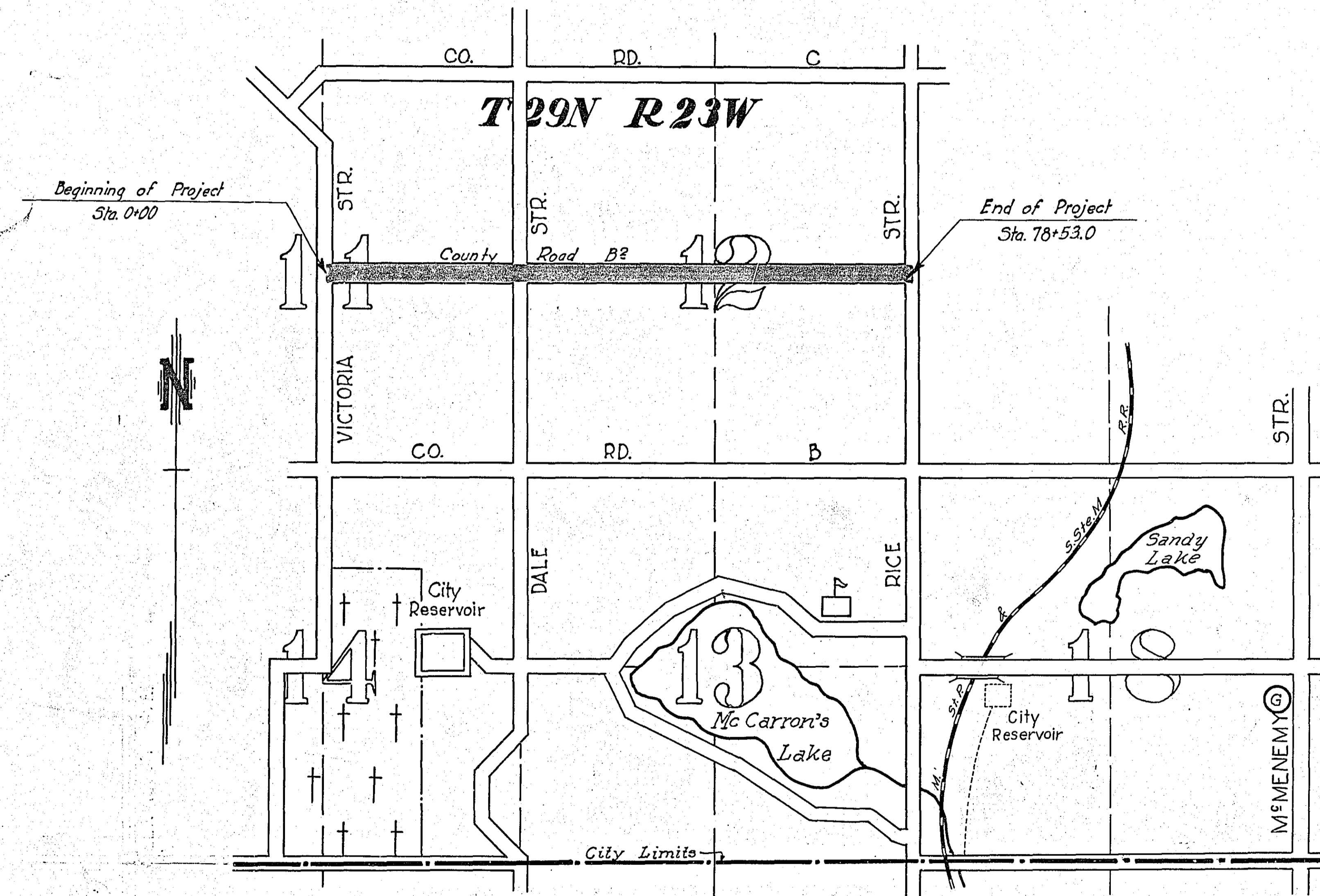
Plan and Profile of County Project No. 26-50

From Center Sec. 11, T29N, R23W To East 1/4 Cor. Sec. 12, T29N, R23W

GROSS LENGTH... 7853.0 FEET... 1.49 MILES  
 LENGTH OF EXCEPTIONS... FEET... MILES  
 NET LENGTH... 7853.0 FEET... 1.49 MILES  
 PLAN, 1 Inch = 100 Feet  
 PROFILE, Horz. 1 Inch = 100 Feet. Vert. 1 Inch = 10 Feet  
 WORKING PLANS  
 Horz. 1 Inch = 100 Feet  
 Vert. 1 Inch = 10 Feet  
 Cross-Sections, 1 Inch = 10 Feet  
 LAYOUT  
 SCALE, 1 Inch = 1320 Feet

INDEX OF SHEETS

Sheet No. 1.	Title Sheet and Layout Map
" No. 2.	Typical Cross-Sections and Statement
" No. 3.	Plan and Profile, Sta. 0+00 to Sta. 52+00
" No. 4.	" " " " " 52+00 " " 78+53
" No. 5, 6, 7.	Cross Sections



Note: Gravel to be hauled from County Pit on McMenemy St 2.25 miles from Sta 78+53. To be loaded with County equipment. Haul 1.75 miles over gravel road, and 0.50 miles over pavement.

Office of Ramsey County Engineer  
ST. PAUL, MINN.  
Plan No. 3-25-26  
Sheet No. "B"

Date of Resolution for Preparation of Plans APRIL 6TH 1925

Planned by *A. B. Van Pelt*  
DESIGNING HIGHWAY ENGINEER

Recommended for Approval *Percy R. Bonister*  
CONSTRUCTION ENGINEER

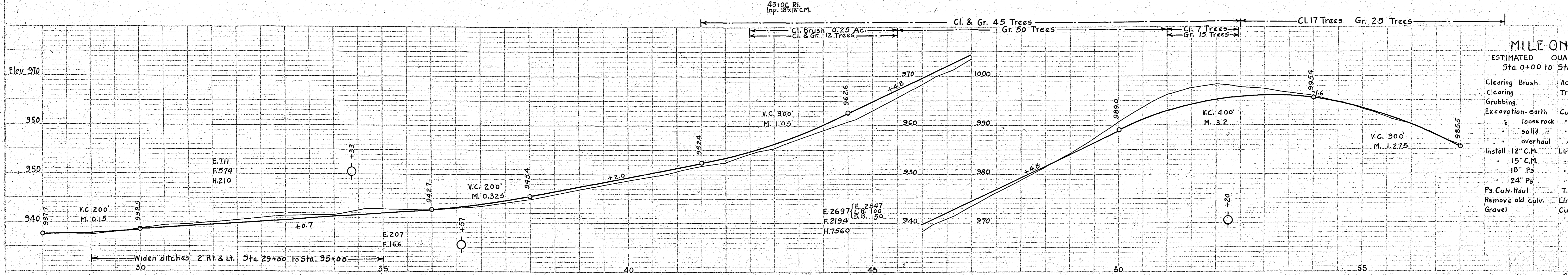
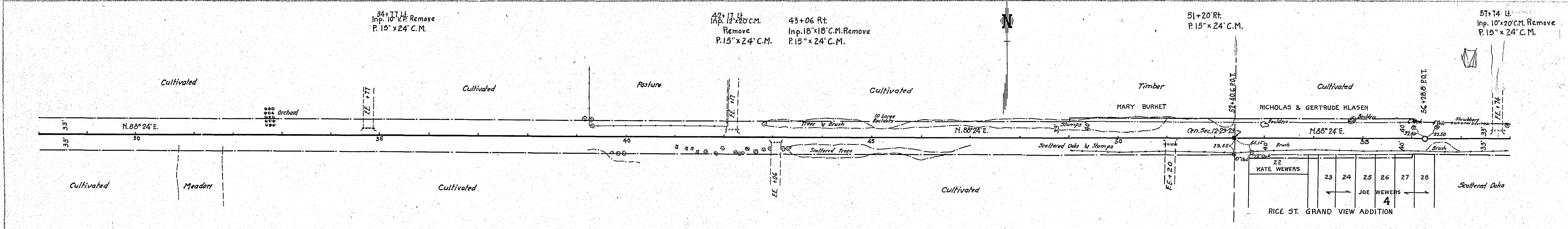
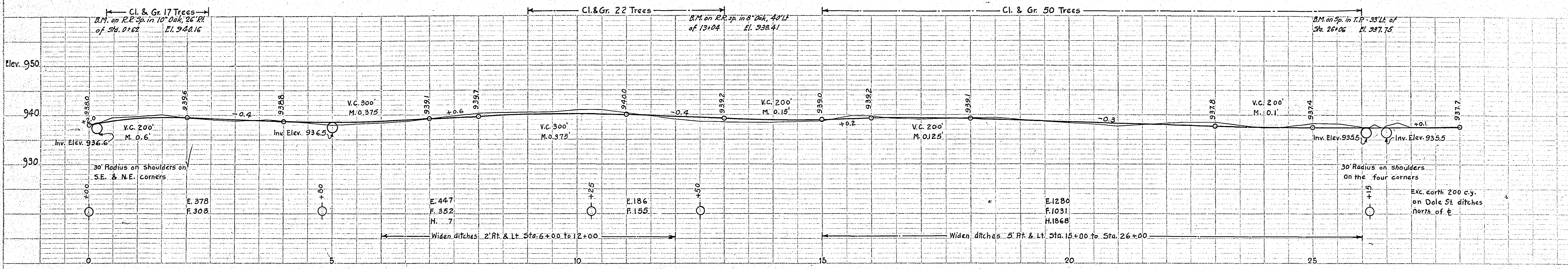
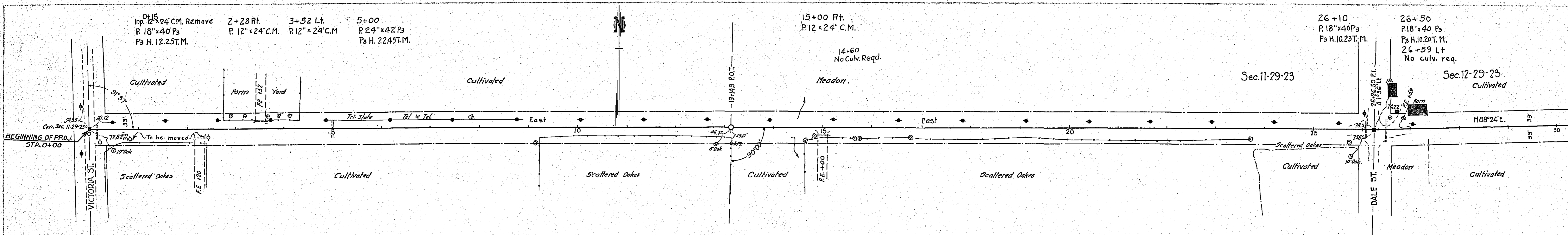
Plans Approved and Recommended for Consideration *P. J. McMenemy*  
COUNTY SURVEYOR

Approved by County Board 19 CHAIRMAN OF COUNTY BOARD



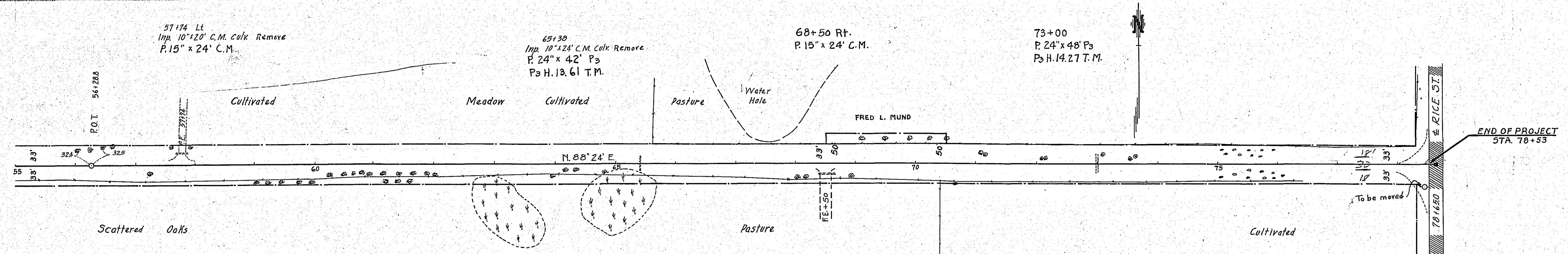
PLAN	DATE
REVISIONS	BY
NOTED	
NOTED	
NOTED	
NO.	

PROFILE	DATE
REVISIONS	BY
NOTED	
NOTED	
NOTED	
NO.	



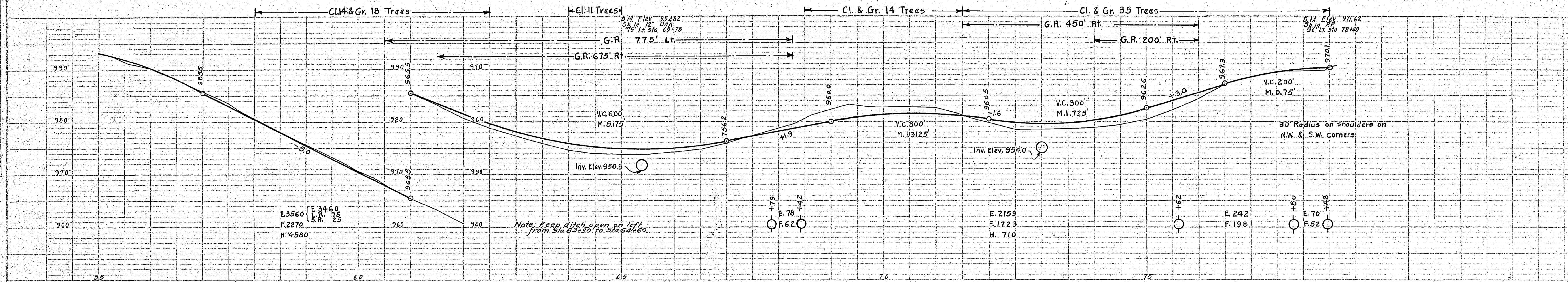
**MILE ONE**  
ESTIMATED QUANTITIES  
Sta. 0+00 to 52+00

Clearing Brush	Acres	0.25
Clearing	Trees	153
Grubbing	"	211
Excavation-earth	Cu. Yd.	5956
loose rock	"	100
solid	"	50
overhaul	"	9645
Install 12" C.M.	Lin. Ft.	72
15" C.M.	"	96
18" Pa	"	120
24" Pa	"	42
Pa Culv. Haul	T.M.	55.17
Remove old culv.	Lin. Ft.	82
Gravel	Cu. Yd.	1186



PLAN	SURVEYED	DATE
NO.	BY	
NOTE: BACK SIGHTS CHECKED BY CIVIL ENGINEER		

PROFILE	SURVEYED	DATE
NO.	BY	
NOTE: BACK SIGHTS CHECKED BY CIVIL ENGINEER		



**MILE TWO**

ESTIMATED	QUANTITIES
Sta. 52+20 to Sta. 78+53	
Clearing	Trees 91
Grubbing	" 92
Excavation earth	Cu. Yd. 6009
" loose rock	" 75
" solid	" 25
" overhaul	15290
Install 15" C.M.	Lin. Ft. 48
" 24" Ps	" 90
Ps Culv. Haul	T.M. 27.88
Remove old culv.	Lin. Ft. 44
Gravel	Cu. Yd. 601
Guard Rail Cable	Lin. Ft. 2100
Guard Rail Anchor Blocks	Complete 8