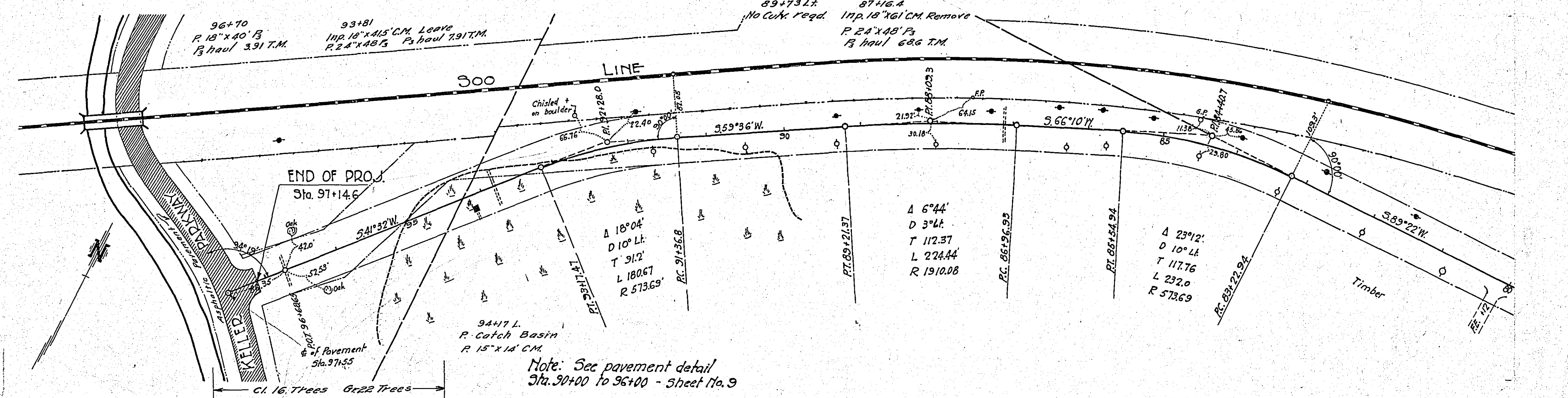
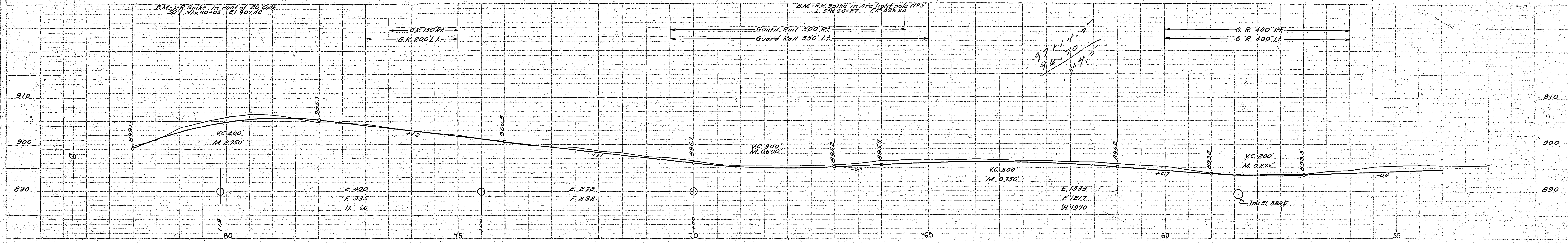
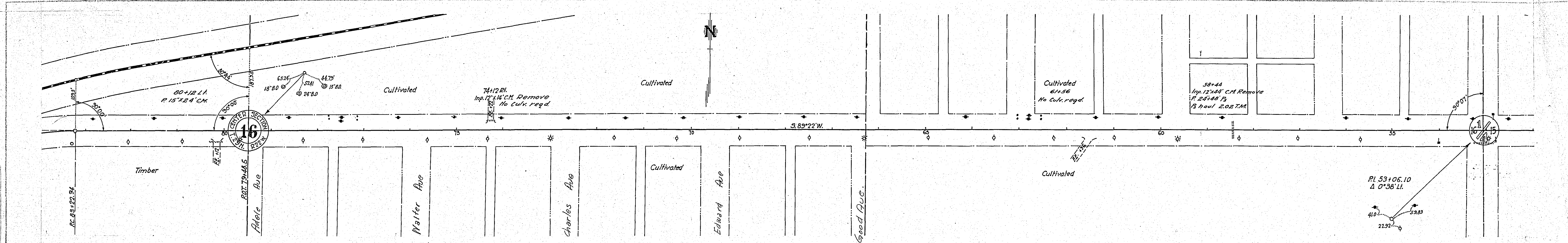


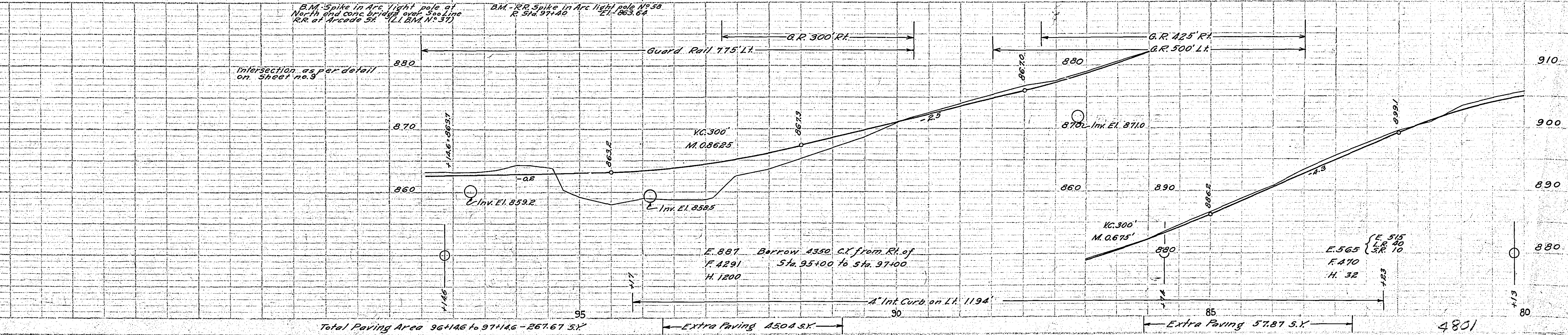
DATE	
BY	
PLAN	APPROVED
	FLATTED
	NOTE BOOK ALIGNED CHECKED
	REF. OF WAY CHECKED
NO.	

DATE	
BY	
PROFILE	APPROVED
	FLATTED
	NOTE BOOK (CHANGE CHECK)
	3. ALL NOTED
NO.	
	STRUCTURE, ELEVATION AND S.W.K.



MILE-TWO
ESTIMATED QUANTITIES
Sta. 49+60 to Sta. 97+146

Clearing	16
Grubbing	27
Excavation	361.9
Embankment	40
Install	3200
15' CM Culverts	118
48' B	42
R. Culvert	1,237.0
Remove	170
Guard Rail	1400
Anchor Blocks Complete	532
Shoulders	10611.91
Pavement	1194
14' CM Basins	30
4' x 10' Hoop	30
4' x 10' Hoop	30
Raking and Seeding	100 S.Y.
	153.92



STATEMENT OF ESTIMATED QUANTITIES AND COSTS.

ITEM	UNIT	MILE 1		MILE 2		MILE 3		MILE 4		MILE 5		MILE 6		MILE 7		MILE 8		TOTAL ESTIMATED QUANTITIES	ESTIMATED UNIT PRICES	AMOUNTS	TOTALS		
		Sta. 0+12 to Sta. 49+60	Sta. 49+60 to Sta. 97+14.6	Sta. to Sta.	Sta. to Sta.	Sta. to Sta.	Sta. to Sta.	Sta. to Sta.	Sta. to Sta.	Sta. to Sta.	Sta. to Sta.	Sta. to Sta.	Sta. to Sta.	Sta. to Sta.	Sta. to Sta.	Sta. to Sta.	Sta. to Sta.						
1	Clearing	Acre																					
2	Clearing	Tree		16																			
3	Grubbing	Acre																					
4	Grubbing	Tree		22																			
5	Excavation - Earth	Cu. Yd.	6375	3619																			
6	Excavation - Loose Rock	Cu. Yd.	75	40																			
7	Excavation - Solid Rock	Cu. Yd.	25	10																			
8	Excavation - Overhaul	Cu. Yd.	16854	3208																			
9	Special Excavation	Lin. Ft.																					
10	Hand Ditching	Cu. Yd.																					
11	Tile Drain	in.																					
12	Tile Drain	in.																					
13	Tile Drain	in.																					
14	Porous Back Fill Material	Cu. Yd.																					
15	Stone Rip - Rap	Cu. Yd.																					
16	Heating Rip - Rap	Cu. Yd. mile																					
17	Install 12" CM	Lin. Ft.	64																				
18	Install 15" CM	Lin. Ft.	274	118																			
19	Install	Lin. Ft.																					
20	Install	Lin. Ft.																					
21	Install	Lin. Ft.																					
22	Install	Lin. Ft.																					
23	Install	Lin. Ft.																					
24	Install 18" Ps	Lin. Ft.	96	40																			
25	Install 24" Ps	Lin. Ft.	180	144																			
26	Install 30" Ps	Lin. Ft.																					
27	Install 36" Ps	Lin. Ft.																					
28	P. Culvert Haul	Ton Mile																					
29	P. Culvert Haul	Ton Mile	3082	2070																			
30	Remove C.M. Culv.	Lin. Ft.	435	119																			
31	Replace C.M. Culv.	Lin. Ft.	29																				
32																							
TOTAL ESTIMATED COST OF GRADING (IN 'TOTALS' COLUMN)																							\$4438.64
33	CM Culv. Material 12"	Lin. Ft.	64																				
34	CM Culv. Material 15"	Lin. Ft.	274	118																			
35	Culv. Material	Lin. Ft.																					
36	Culv. Material	Lin. Ft.																					
37	Culv. Material	Lin. Ft.																					
38	P. Culv. Material 18"	Lin. Ft.	96	40																			
39	P. Culv. Material 24"	Lin. Ft.	180	144																			
40	P. Culv. Material 30"	Lin. Ft.																					
41	P. Culv. Material 36"	Lin. Ft.																					
TOTAL ESTIMATED COST OF PORTABLE CULVERT MATERIAL (IN 'TOTALS' COLUMN)																							\$1717.18
42	Gravel Pit Stripping	Cu. Yd.																					
43	Screening	Cu. Yd.																					
44	Loading	Cu. Yd.																					
45	Hauling	Cu. Yd. Mile																					
46	Shaping & Compacting	Man Hour																					
47	Shaping & Compacting	Man & Team Hour																					
48																							
49																							
50																							
51																							
TOTAL ESTIMATED COST OF GRAVEL HAUL (IN 'TOTALS' COLUMN)																							
52	Gravel Material F. O. B. Pit	Cu. Yd.																					
53	Freight (If any)	Cu. Yd.																					
54	Unloading from Cars	Cu. Yd.																					
TOTAL ESTIMATED COST OF GRAVEL MATERIAL (IN 'TOTALS' COLUMN)																							
55	Fine Grading - Exc. & Emb.	Cu. Yd.																					
56	Shoulders - Earth	Sq. Yd.	5493	5232																			
57																							
58																							
59	Pavement I.C.C.	Sq. Yd.	11116.56	10611.91																			
60	Integral Curb 2"	Lin. Ft.	2840																				
61	Integral Curb 4"	Lin. Ft.		1194																			
62	Surface Drain	Lin. Ft.																					
63	Surface Drain Basins	Basin																					
64	Bridge Approach Slabs (Square)	Slab																					
65	Bridge Approach Slabs (Rect)	Slab																					
66	Catch Basin	Complete	2	1																			
67	Fir Header 3"x10"	Lin. Ft.	350	80																			
68	Bit Filled Joint	Lin. Ft.	120	32																			
TOTAL ESTIMATED COST OF PAVEMENT CONSTRUCTION (IN 'TOTALS' COLUMN)																							\$49551.13
69	Concrete	Cu. Yd.																					
70	Reinforcing Steel	Lb.																					
71	Excavation - Earth	Cu. Yd.																					
72	Excavation - Loose Rock	Cu. Yd.																					
73	Excavation - Solid Rock	Cu. Yd.																					
74	Bridge	* Bridge No.	Br. No.	Br. No.	Br. No.	Br. No.	Br. No.	Br. No.	Br. No.	Br. No.	Br. No.	Br. No.	Br. No.	Br. No.	Br. No.	Br. No.	Br. No.	Br. No.	Br. No.	Br. No.	Br. No.		
75		Station																					
76	Concrete	Cu. Yd.																					
77	Reinforcing Steel	Lb.																					
78	Structural Steel	Lb.																					
79	Piling	Lin. Ft.																					
80	Temporary Crossing	Lump Sum																					
81	Removing old Bridge	Lump Sum																					
82	Bituminous Surface	Sq. Yd.																					
83																							
84																							
TOTAL ESTIMATED COST OF STRUCTURES (IN 'TOTALS' COLUMN)																							
85	Guard Rail Cable	Lin. Ft.	2640	4200																			
86	Guard Rail Anchor Blocks	Complete	14	20																			
87	Grading and Seeding	100 Sq. Yd.	145.22	153.92																			
TOTAL ESTIMATED COST OF MISCELLANEOUS ITEMS (IN 'TOTALS' COLUMN)																							\$1910.21
GRAND TOTAL																							

CONVENTIONAL SIGNS & ABBREVIATIONS

STATE LINE	-----	EXCAVATION	-----	F
COUNTY LINE	-----	EMBANKMENT	-----	F
TOWNSHIP LINE	-----	OVERHAUL	-----	H
SECTION LINE	-----	SURFACING	-----	S
CITY, VILLAGE, OR BOROUGH	-----	GRADE RAIL	-----	GR
FENCE LINE	-----	INTERSECTION ANGLE	-----	A
RIGHT-OF-WAY LINE	-----	RADIUS	-----	R
TRAVELLED WAY	-----	ELEVATION	-----	E
RAILROADS	-----	VERTICAL CURVE	-----	VC
RETAINING WALL	-----	BECKH MARK	-----	B.M.
BASE OR SURVEY LINE	-----	SECTIONAL CONCRETE CULVERT	-----	P.C.
LEVEE	-----	CORRUGATED METAL CULVERT	-----	C.M.
GRAVEL PIT	-----	CULVERT HAUL	-----	P.H.
SAND PIT	-----	TON MILES	-----	T.M.
CLAY PIT	-----	PLACE	-----	P
ROCK QUARRY	-----	IN PLACE	-----	INP
CULVERTS	-----	REPLACE	-----	REP
PLAIN	-----	RIGHT	-----	R
WITH FACEWALLS	-----	LEFT	-----	L
WITH WINGWALLS	-----	HAND DITCHING	-----	H.D.
DROP INLET	-----	POINT OF CURVE	-----	P.C.
POWER POLE LINE	-----	POINT OF TANGENT	-----	P.T.
TELEPHONE OR TELEGRAPH LINE	-----	POINT OF INTERSECTION	-----	P.I.
MARSH	-----	SPECIAL EXCAVATION	-----	S.E.
HEDGE, BRUSH, OR TIMBER	-----	SPECIAL FLOWING	-----	S.F.
GROUND ELEVATION	-----	TELEPHONE POLE	-----	Tel.P.
GRADE ELEVATION	-----			

STATE HIGHWAY DEPARTMENT
OF MINNESOTA
Plan and Profile of State Road No. 10

COUNTY OF RAMSEY

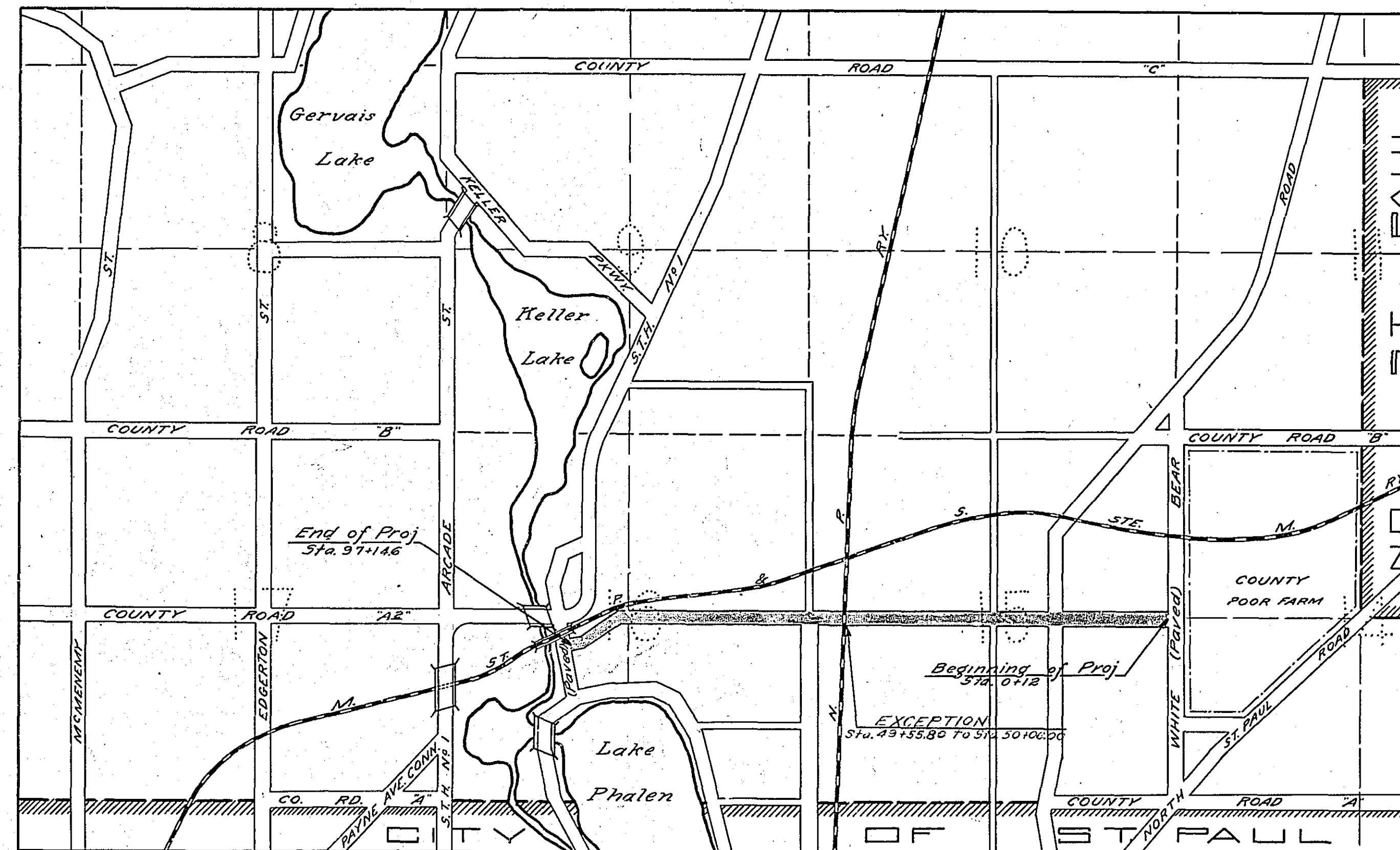
From E. 1/4 Cor. Sec. 15, T. 29, R. 22 To A point 1490 ft. W. and 690 ft. S. of con. sec. 16
Give proper reference to Sections, Township and Range

GROSS LENGTH 9702.6 FEET 1.84 MILES
LENGTH OF EXCEPTIONS 502 FEET .01 MILES
NET LENGTH 9652.4 FEET 1.83 MILES
PLAN, 1 Inch = 100 Feet
PROFILE, Horz. 1 Inch = 100 Feet. Vert. 1 Inch = 10 Feet
SCALES WORKING PLANS (Horz. 1 Inch = 100 Feet
Vert. 1 Inch = 10 Feet
Cross-Sections, 1 Inch = 10 Feet

LAYOUT
SCALE, 1 Inch = 3322 Feet

INDEX OF SHEETS

Sheet No. 1. Title Sheet and Layout Map
" No. 2. Typical Cross-Sections and Statement
" No. 3. Plan and Profile, Sta. 0+12 to Sta. 49+62
" No. 4. " " " 49+60 " " 97+146
" No. 5.-8. Cross Sections
" No. 9. Details
" No. 10. Pavement Construction Details
" No. 11. Miscellaneous Standards

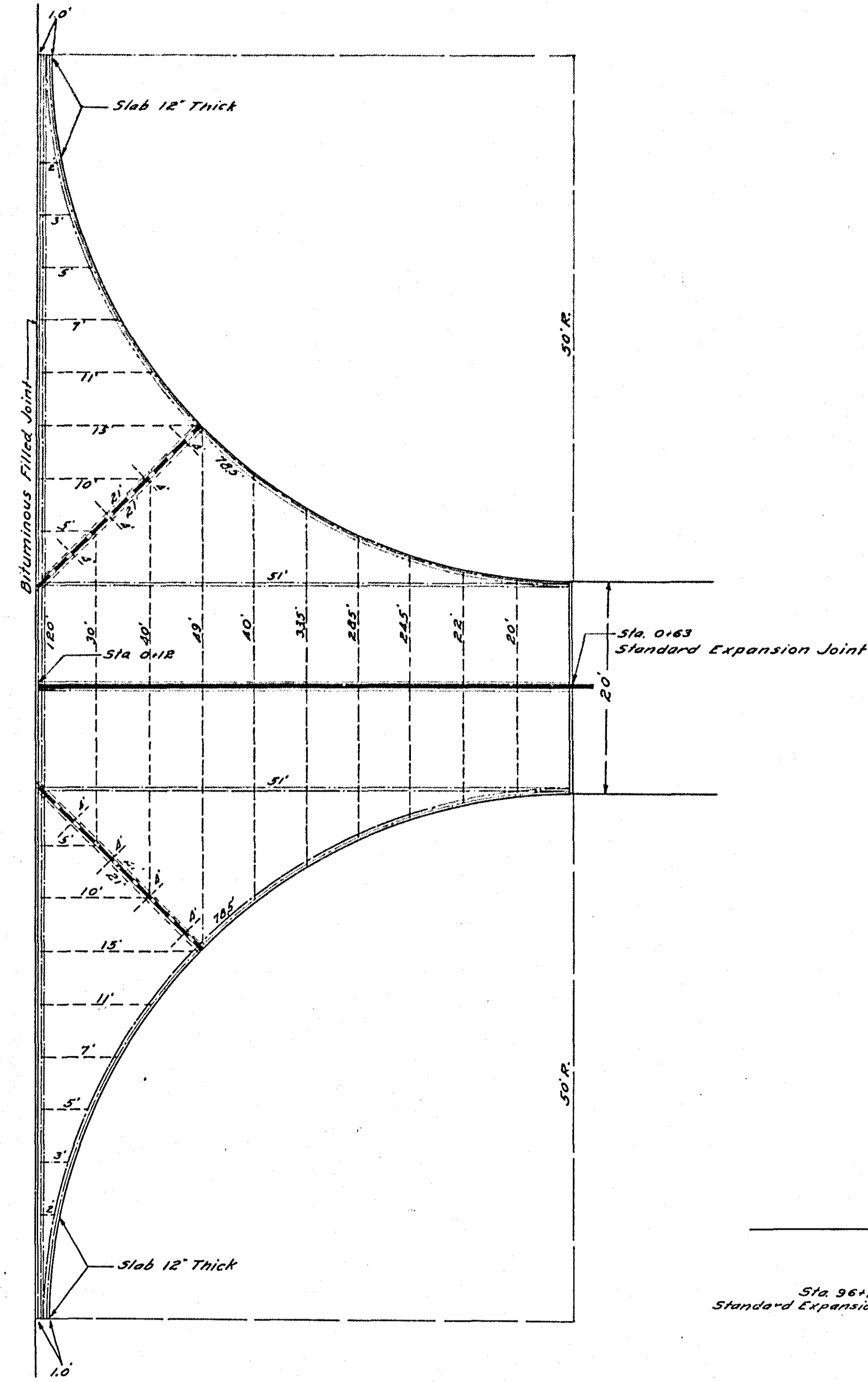


4/5/26
"B"

Planned by R. J. McLaughlin
Acting HIGHWAY ENGINEER FOR Ramsey COUNTY.
Recommended for Approval H. Starnes DIVISION ENGINEER
Recommended for Approval J. H. Schramm ASSISTANT CONSTRUCTION ENGINEER
Approved Apr. 1 1926 J. H. Schramm CHIEF ENGINEER & DEPUTY COMMISSIONER

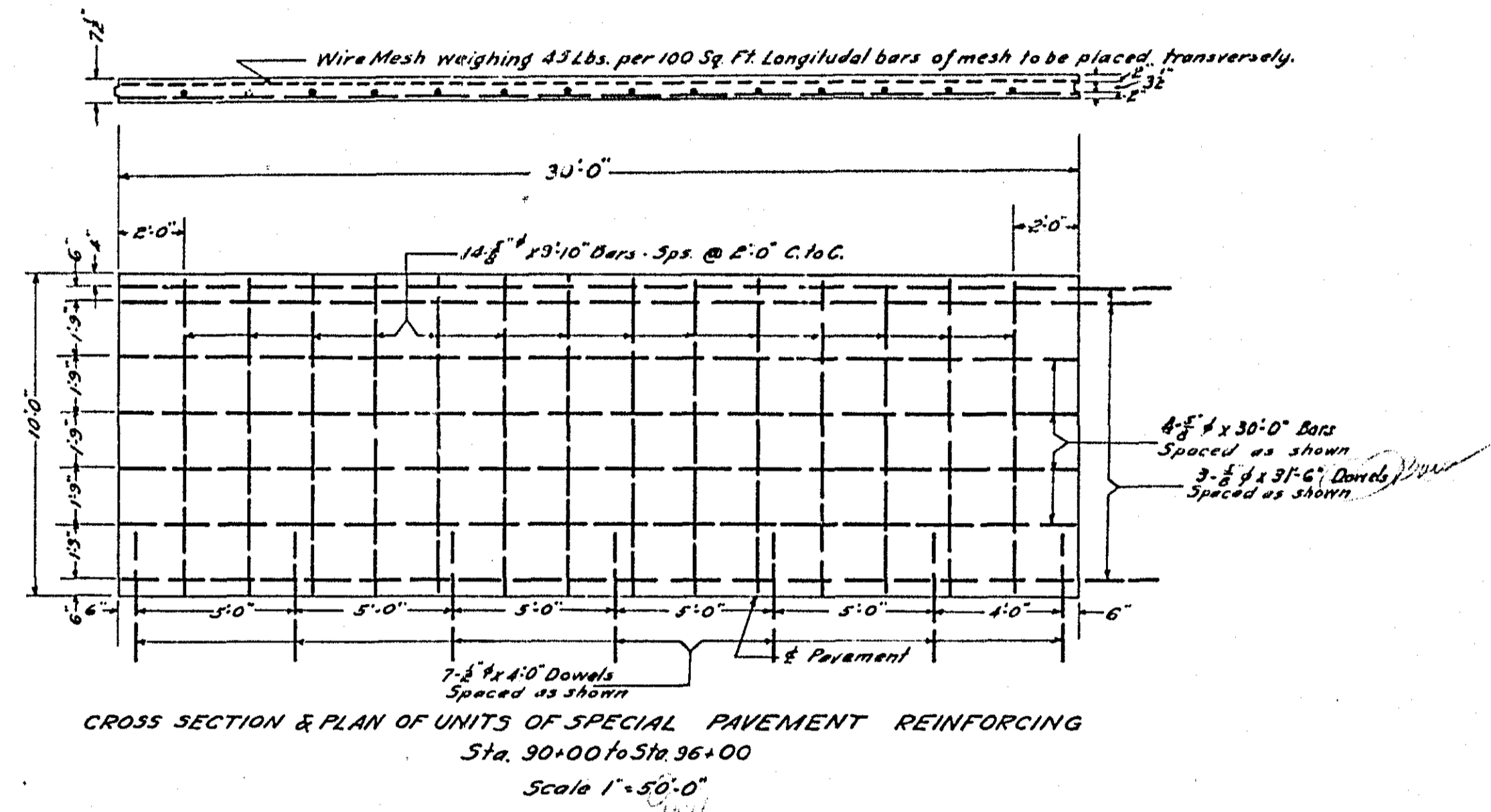
CONCRETE WALL
Concrete Gutter

COUNTY PROJECT 23-52
One Course Concrete Pavement

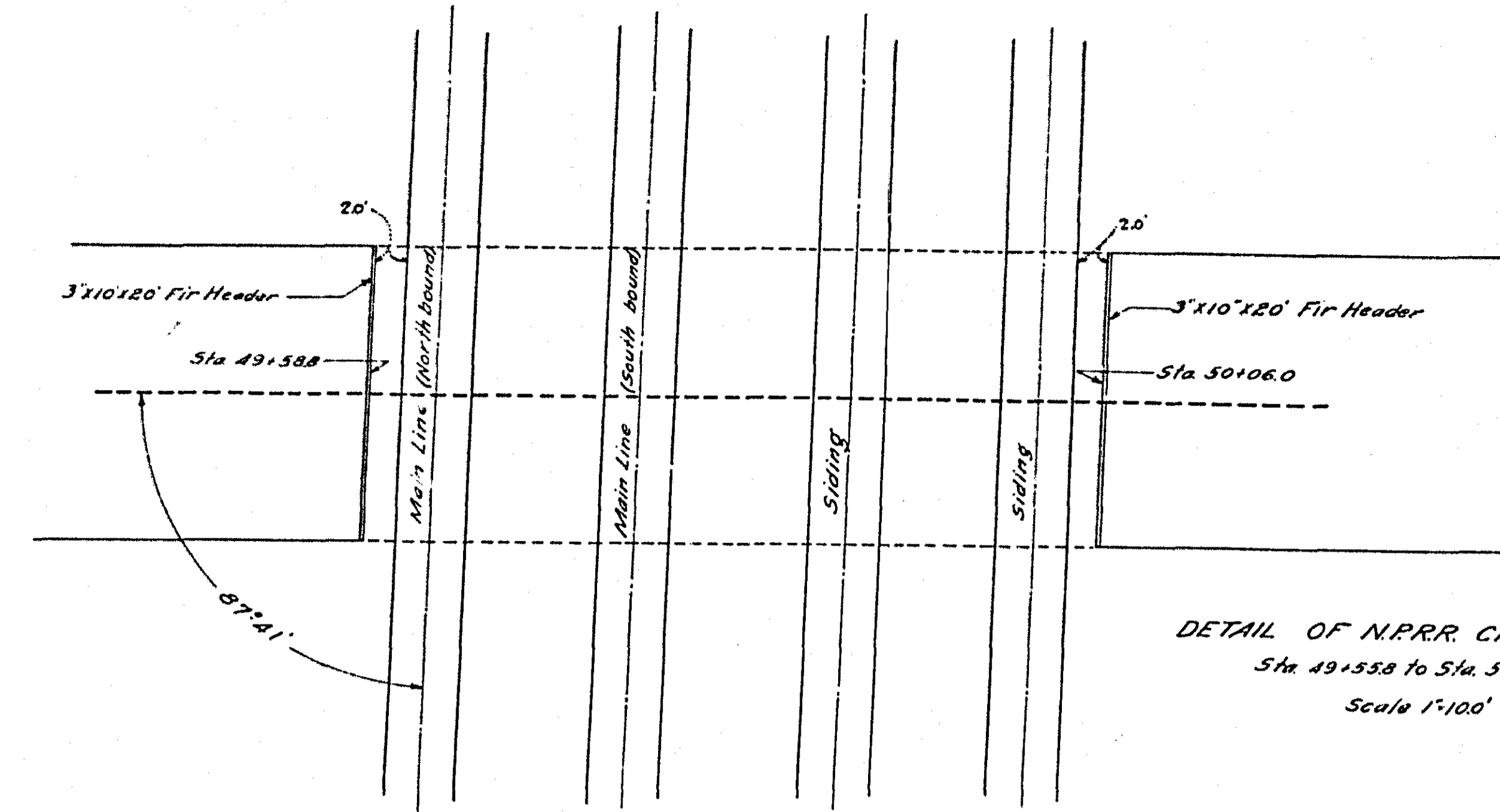


DETAIL OF INTERSECTION
Sta. 0+12 to Sta. 0+63
Total Area 243.67 SQ.
Scale 1"=100'

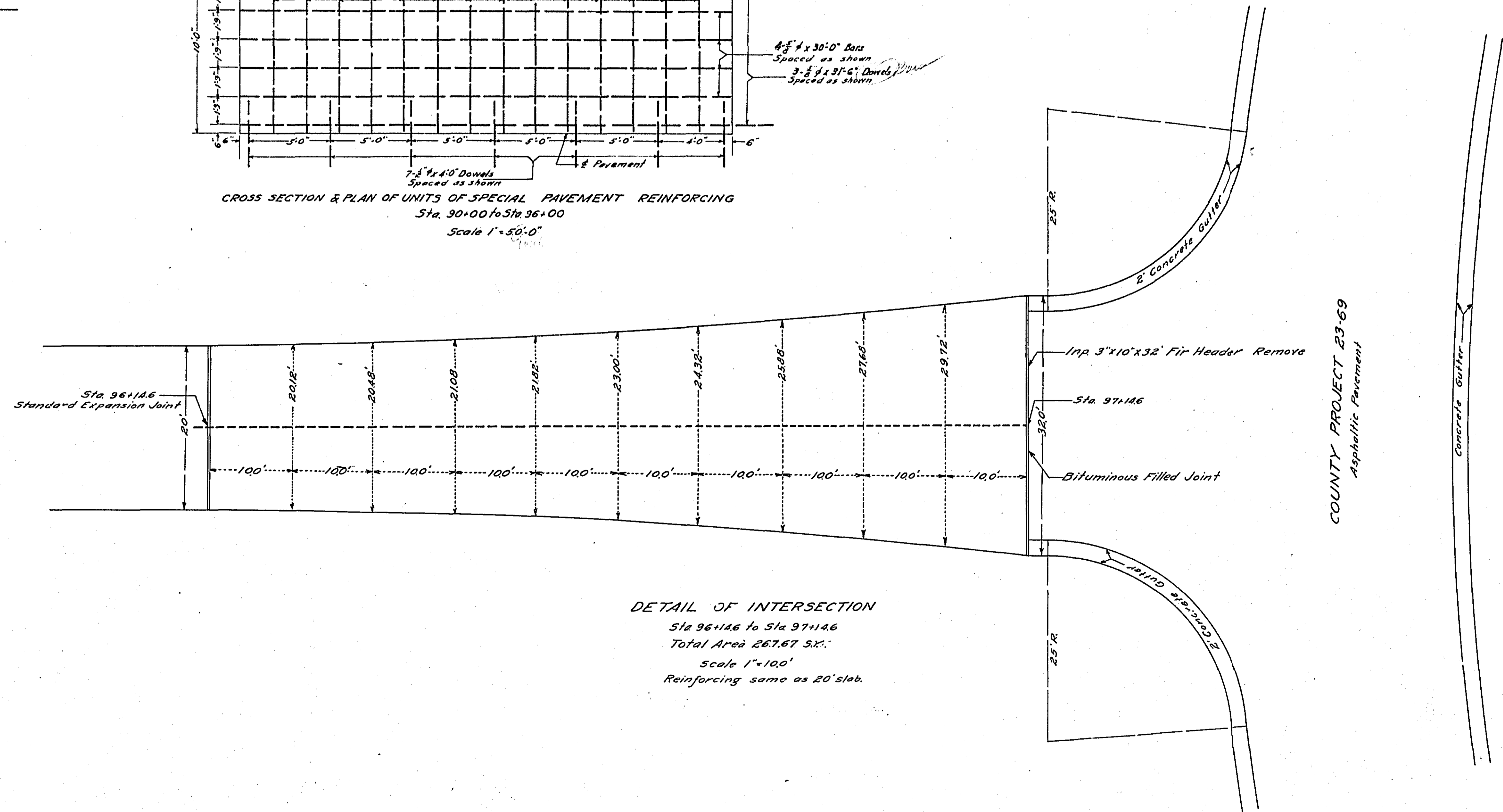
REINFORCING:
 Bituminous Filled Joint
 Concealed Contraction Joint
 Open Contraction Joint
 1/2" Reinforcing Bars
 3/8" Reinforcing Bars



CROSS SECTION & PLAN OF UNITS OF SPECIAL PAVEMENT REINFORCING
Sta. 30+00 to Sta. 36+00
Scale 1"=20'-0"



DETAIL OF N.P.R.R. CROSSING
Sta. 49+538 to Sta. 50+060
Scale 1"=100'



DETAIL OF INTERSECTION
Sta. 96+146 to Sta. 97+146
Total Area 267.67 SQ.
Scale 1"=100'
Reinforcing same as 20' slab.

COUNTY PROJECT 23-69
Asphaltic Pavement

CONCRETE WALL
Concrete Gutter

DETAILS