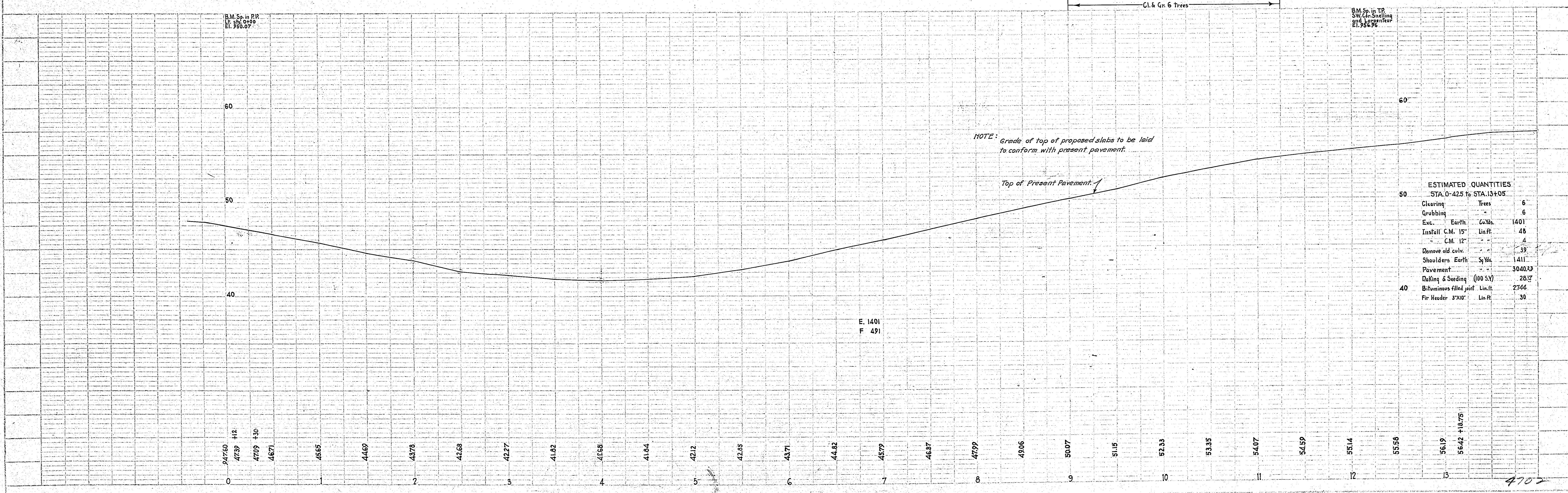
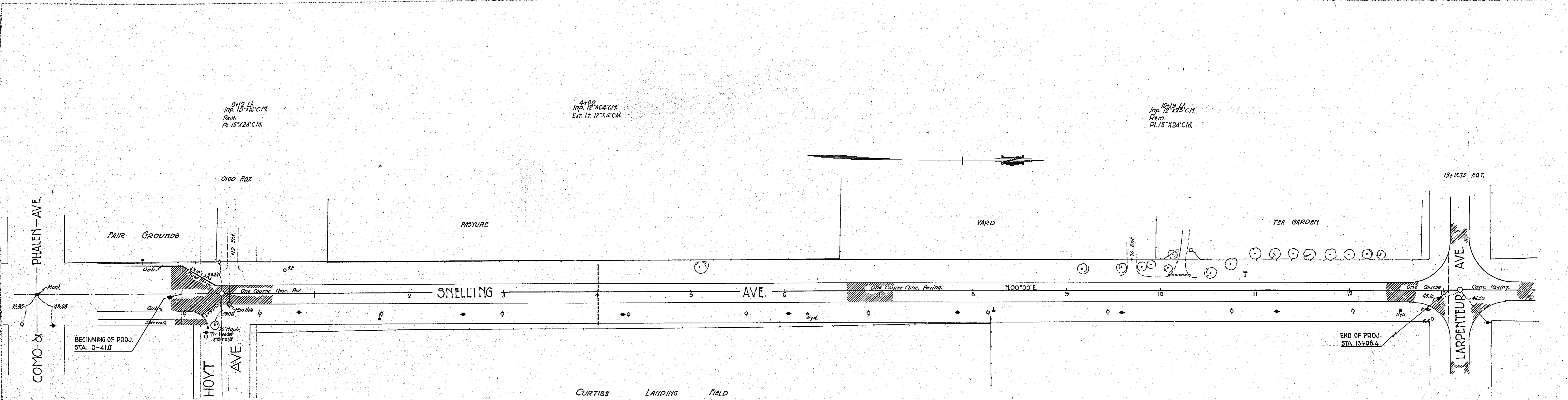


DATE	
BY	
REVISION	
NO.	
DESCRIPTION	
DATE	
BY	
REVISION	
NO.	
DESCRIPTION	
DATE	
BY	
REVISION	
NO.	
DESCRIPTION	

DATE	
BY	
REVISION	
NO.	
DESCRIPTION	
DATE	
BY	
REVISION	
NO.	
DESCRIPTION	
DATE	
BY	
REVISION	
NO.	
DESCRIPTION	



ESTIMATED QUANTITIES  
STA. 0+42.5 TO STA. 13+08.4

Clearing	Trees	6
Grubbing		6
Exc.	Earth	1401
Inst'fall	C.M. 15"	48
	C.M. 12"	4
Remove old culv.		39
Shoulders	Earth	1411
Pavement		3040.23
Rolling & Seeding	(100 S.Y.)	28.17
Bituminous filled joint	Lin. ft.	2744
Fir Header	3"x10"	30

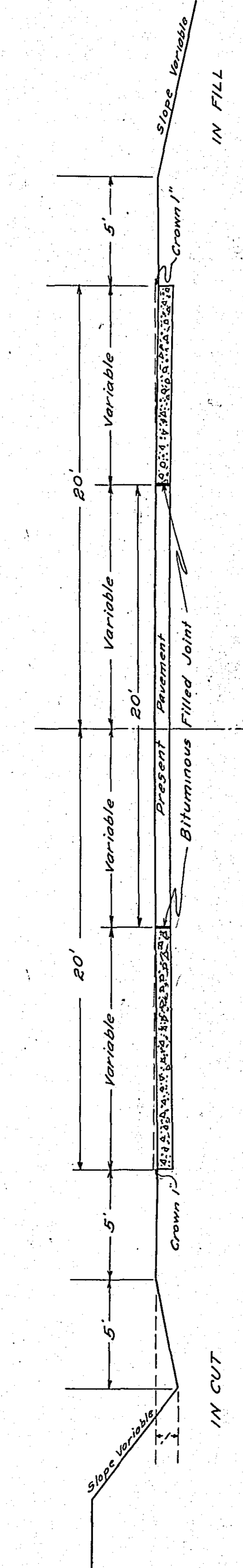
STATEMENT OF ESTIMATED QUANTITIES AND COSTS.

TYPICAL CROSS SECTIONS AND DETAILS

FED. ROAD DIST. NO.	STATE	FED. AID PROJ. NO.	SEC.	FISCAL YEAR	SHEET NO.	TOTAL SHEETS
4	MINN.					

ITEM	UNIT	MILE																TOTAL ESTIMATED QUANTITIES	ESTIMATED UNIT PRICES	AMOUNTS	TOTALS
		Sta. 0+01 to Sta. 1+00	Sta. 1+00 to Sta. 2+00	Sta. 2+00 to Sta. 3+00	Sta. 3+00 to Sta. 4+00	Sta. 4+00 to Sta. 5+00	Sta. 5+00 to Sta. 6+00	Sta. 6+00 to Sta. 7+00	Sta. 7+00 to Sta. 8+00	Sta. 8+00 to Sta. 9+00	Sta. 9+00 to Sta. 10+00	Sta. 10+00 to Sta. 11+00	Sta. 11+00 to Sta. 12+00	Sta. 12+00 to Sta. 13+00	Sta. 13+00 to Sta. 14+00	Sta. 14+00 to Sta. 15+00	Sta. 15+00 to Sta. 16+00				
1	Clearing	Acre																			
2	Clearing	Tree																6			
3	Grubbing	Acre																			
4	Grubbing	Tree																6			
5	Excavation - Earth	Cu. Yd.																1401			
6	Excavation - Loose Rock	Cu. Yd.																			
7	Excavation - Solid Rock	Cu. Yd.																			
8	Excavation - Overhaul	Cu. Yd.																			
9	Special Excavation	Lin. Ft.																			
10	Hand Ditching	Cu. Yd.																			
11	Tile Drain	in.																			
12	Tile Drain	in.																			
13	Tile Drain	in.																			
14	Porous Back Fill Material	Cu. Yd.																			
15	Stone Rip - Rip	Cu. Yd.																			
16	Stone Rip - Rip	Cu. Yd. mile																			
17	Install	12" C.M.																			
18	Install	15" C.M.																4			
19	Install	in.																48			
20	Install	in.																			
21	Install	in.																			
22	Install	in.																			
23	Install	in.																			
24	Install	in.																			
25	Install	24" P <sub>3</sub>																			
26	Install	30" P <sub>3</sub>																			
27	Install	36" P <sub>3</sub>																			
28	P <sub>1</sub> Culvert Haul	Ton Mile																			
29	P <sub>2</sub> Culvert Haul	Ton Mile																			
30	Remove Old Cuv.	Lin. Ft.																39			
31																					
32																					
<b>TOTAL ESTIMATED COST OF GRADING (IN 'TOTALS' COLUMN)</b>																			\$ 674.80		
33	C.M. Culv. Material 12"	Lin. Ft.																4			
34	C.M. Culv. Material 15"	Lin. Ft.																48			
35	Culv. Material	Lin. Ft.																			
36	Culv. Material	Lin. Ft.																			
37	Culv. Material	Lin. Ft.																			
38	Culv. Material	Lin. Ft.																			
39	P <sub>3</sub> Culv. Material 24"	Lin. Ft.																			
40	P <sub>3</sub> Culv. Material 30"	Lin. Ft.																			
41	P <sub>3</sub> Culv. Material 36"	Lin. Ft.																			
<b>TOTAL ESTIMATED COST OF PORTABLE CULVERT MATERIAL (IN 'TOTALS' COLUMN)</b>																			\$ 568.4		
42	Gravel Pit Stripping	Cu. Yd.																			
43	Screening	Cu. Yd.																			
44	Loading	Cu. Yd.																			
45	Hauling	Cu. Yd. Mile																			
46	Shaping & Compacting	Man Hour																			
47	Shaping & Compacting	Man & Team Day																			
48																					
49																					
50																					
51																					
<b>TOTAL ESTIMATED COST OF GRAVEL HAUL (IN 'TOTALS' COLUMN)</b>																			\$		
52	Gravel Material F. O. B. Pit	Cu. Yd.																			
53	Freight (If any)	Cu. Yd.																			
54	Unloading from Cars	Cu. Yd.																			
<b>TOTAL ESTIMATED COST OF GRAVEL MATERIAL (IN 'TOTALS' COLUMN)</b>																			\$		
55	Fine Grading - Exc. & Emb.	Cu. Yd.																			
56	Shoulders - Earth	Sq. Yd.																1411			
57																					
58																					
59	Pavement	Sq. Yd.																304223			
60	Integral Curb	Lin. Ft.																			
61	Sloping Curb	Lin. Ft.																			
62	Surface Drain	Lin. Ft.																			
63	Surface Drain Basins	Basin																			
64	Bridge Approach Slabs (Square)	Slab																			
65	Bridge Approach Slabs (Rect.)	Slab																			
66	Bituminous Filled Joint	Lin. Ft.																2744			
67	Flt. Header 3"x10"	Lin. Ft.																30			
68																					
<b>TOTAL ESTIMATED COST OF PAVEMENT CONSTRUCTION (IN 'TOTALS' COLUMN)</b>																			\$ 8135.08		
69	Concrete	Cu. Yd.																			
70	Reinforcing Steel	Lb.																			
71	Excavation - Earth	Cu. Yd.																			
72	Excavation - Loose Rock	Cu. Yd.																			
73	Excavation - Solid Rock	Cu. Yd.																			
74	Bridge	* Bridge No. Br. No. Br. No. Br. No. Br. No. Br. No. Br. No. Br. No. Br. No. Br. No. Br. No. Br. No. Br. No.																			
75	Station																				
76	Concrete	Cu. Yd.																			
77	Reinforcing Steel	Lb.																			
78	Structural Steel	Lb.																			
79	Piling	Lin. Ft.																			
80	Temporary Crossing	Lump Sum																			
81	Removing old Bridge	Lump Sum																			
82	Bituminous Surface	Sq. Yd.																			
83																					
84																					
<b>TOTAL ESTIMATED COST OF STRUCTURES (IN 'TOTALS' COLUMN)</b>																			\$		
85	Guard Rail	Lin. Ft.																			
86	Raking & Seeding	100 Sq. Yd.																2817			
87	Excavation for Gutter	Cu. Yd.																			
<b>TOTAL ESTIMATED COST OF MISCELLANEOUS ITEMS (IN 'TOTALS' COLUMN)</b>																			\$ 42.88		
<b>GRAND TOTAL</b>																			\$ 8908.68		

GENERAL GRADING & PAVING SECTION



Pavement 7 1/2" Uniform Thickness and Subgrade to be Crowned as shown

\* NOTE: BRIDGE ITEMS LISTED UNDER BRIDGE NUMBERS IN MILE COLUMNS REGARDLESS OF LOCATION

CONVENTIONAL SIGNS & ABBREVIATIONS

STATE LINE	-----	EXCAVATION	-----	F
COUNTY LINE	-----	EMBANKMENT	-----	F
TOWNSHIP LINE	-----	OVERHAUL	-----	H
SECTION LINE	-----	SURFACING	-----	S
CITY, VILLAGE, OR BOROUGH	-----	GUARD RAIL	-----	GR
FENCE LINE	-----	INTERSECTION ANGLE	-----	A
RIGHT-OF-WAY LINE	-----	RADIUS	-----	R
TRAVELLED WAY	-----	ELEVATION	-----	EI
RAILROADS	-----	VERTICAL CURVE	-----	VC
RETAINING WALL	-----	BENCH MARK	-----	B.M.
BASE OR SURVEY LINE	-----	SECTIONAL CONCRETE CULVERT	-----	P.1
LEVEE	-----	CORRUGATED METAL CULVERT	-----	C.M.
GRAVEL PIT	-----	CULVERT HAUL	-----	P.H.
SAND PIT	-----	TOW MILES	-----	T.M.
CLAY PIT	-----	IN PLACE	-----	P
ROCK QUARRY	-----	IN PLACE	-----	Imp
CULVERTS	-----	REPLACE	-----	Rep
PLAIN	-----	RIGHT	-----	R
WITH FACEWALLS	-----	LEFT	-----	L
WITH WINDWALLS	-----	HAND DITCHING	-----	H.D.
DROP INLET	-----	POINT OF CURVE	-----	P.C.
POWER POLE LINE	-----	POINT OF TANGENT	-----	P.T.
TELEPHONE OR TELEGRAPH LINE	-----	POINT OF INTERSECTION	-----	P.I.
MARSH	-----	SPECIAL EXCAVATION	-----	S.E.
HERD, BUSH, OR TIMBER	-----	SPECIAL PLOWING	-----	S.P.
GROUND ELEVATION	-----	TELEPHONE POLE	-----	Te.P.
GRADE ELEVATION	-----			

STATE HIGHWAY DEPARTMENT  
OF MINNESOTA

Plan and Profile of State Road No. S.T.H. No 62

COUNTY OF RAMSEY

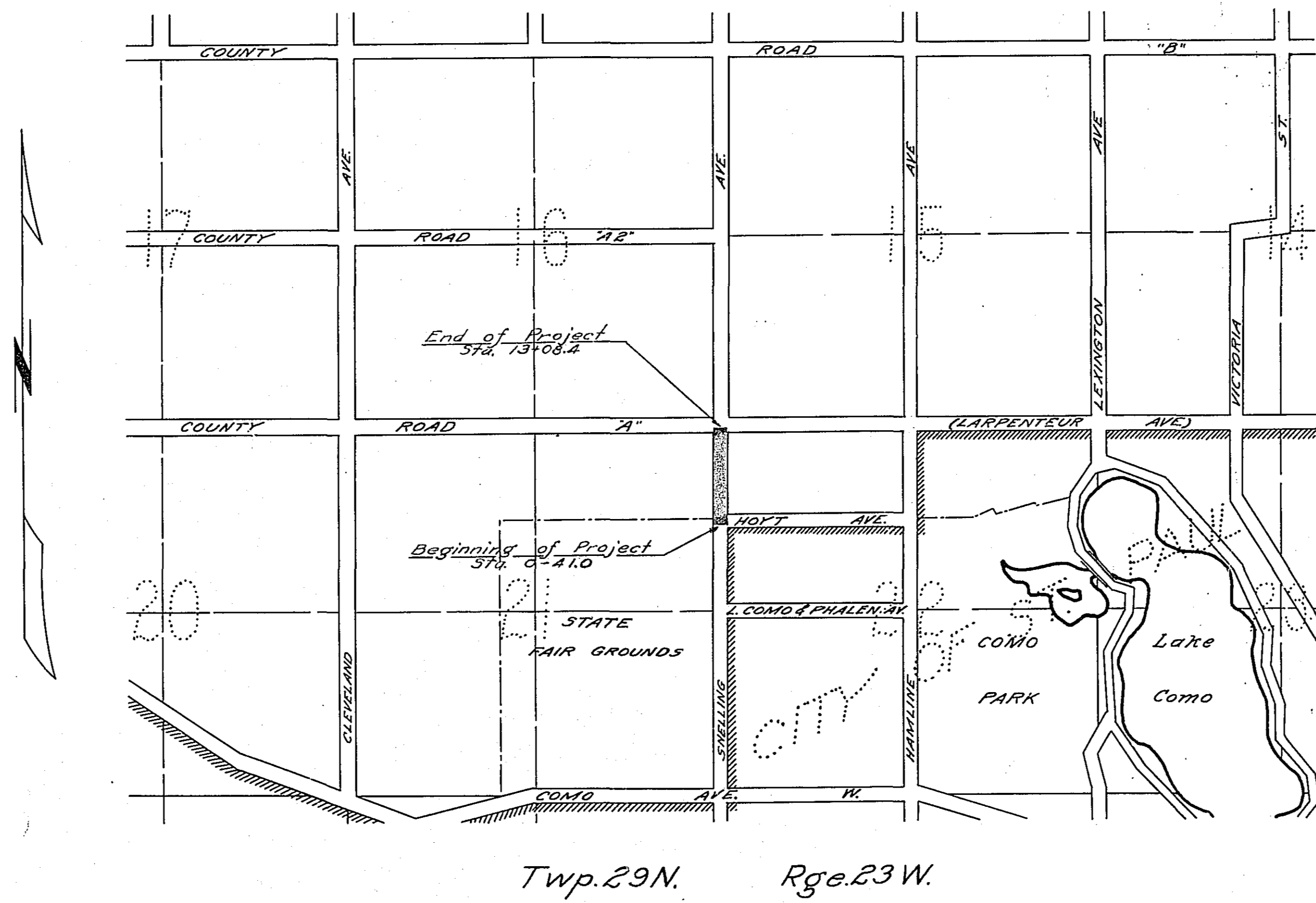
From SE. Cor. of NE. 1/4 Sec. 21, Twp. 29, Rge. 23 To NE. Cor. Sec. 21, Twp. 29, Rge. 23  
Give proper reference to Sections, Township and Range

GROSS LENGTH 1,349.4 FEET .26 MILES  
LENGTH OF EXCEPTIONS          FEET          MILES  
NET LENGTH 1,349.4 FEET .26 MILES  
PLAN, 1 Inch = 50 Feet  
PROFILE, Horz. 1 Inch = 50 Feet. Vert. 1 Inch = 5 Feet  
SCALES WORKING PLANS { Horz. 1 Inch = 50 Feet  
Vert. 1 Inch = 5 Feet  
Cross-Sections, 1 Inch = 5 Feet

LAYOUT  
SCALE, 1 Inch = .1760 Feet

INDEX OF SHEETS

Sheet No. 1. Title Sheet and Layout Map  
" No. 2. Typical Cross-Sections and Statement  
" No. 3. Plan and Profile, Sta. 0+00 to Sta. 13+00.00  
" No. 4, 5. Cross Sections  
" No. 6. Intersection Details and Reinforcing Details



4/19/26  
"D"

Planned by R. J. Koffangle  
HIGHWAY ENGINEER FOR Ramsey COUNTY.  
Recommended for Approval G. G. Glavin  
DIVISION ENGINEER  
Recommended for Approval H. H. Chapman  
CHIEF CONSTRUCTION ENGINEER  
Approved Apr. 17 1926 G. W. Beason  
CHIEF ENGINEER & DEPUTY COMMISSIONER