

CONVENTIONAL SIGNS & ABBREVIATIONS

STATE LINE	-----	EXCAVATION	-----	E
COUNTY LINE	-----	EMBANKMENT	-----	F
TOWNSHIP LINE	-----	OVERHAUL	-----	H
SECTION LINE	-----	SURFACING	-----	S
CITY, VILLAGE, OR BOROUGH	-----	GUARD RAIL	-----	G.R.
FENCE LINE	-----	INTERSECTION ANGLE	-----	A
RIGHT-OF-WAY LINE	-----	RADIUS	-----	R
TRAVELLED WAY	-----	ELEVATION	-----	E.I.
RAILROADS	-----	VERTICAL CURVE	-----	V.C.
RETAINING WALL	-----	BENCH MARK	-----	B.M.
BASE OR SURVEY LINE	-----	SECTIONAL CONCRETE CULVERT	-----	P.I.
LEVEE	-----	CORRUGATED METAL CULVERT	-----	C.M.
GRAVEL PIT	-----	CULVERT HAUL	-----	P.H.
SAND PIT	-----	TON MILES	-----	T.M.
CLAY PIT	-----	PLACE	-----	P
ROCK QUARRY	-----	IN PLACE	-----	Imp.
CULVERTS	-----	REPLACE	-----	Rep.
PLAIN	-----	RIGHT	-----	R
WITH FACE WALLS	-----	LEFT	-----	L
WITH WING WALLS	-----	HAND DITCHING	-----	H.D.
DROP INLET	-----	POINT OF CURVE	-----	P.C.
POWER POLE LINE	-----	POINT OF TANGENT	-----	P.T.
TELEPHONE OR TELEGRAPH LINE	-----	POINT OF INTERSECTION	-----	P.I.
MARSH	-----	SPECIAL EXCAVATION	-----	S.E.
HEDGE, BRUSH, OR TIMBER	-----	SPECIAL FLOWING	-----	S.P.
GROUND ELEVATION	-----	TELEPHONE POLE	-----	Tel.P.
GRADE ELEVATION	-----			

OFFICE OF COUNTY ENGINEER

RAMSEY COUNTY

Plan and Profile of County Project No. 25-54

From a point 1016.5 ft. S. & 1710.6 ft. W. of Cen. Sec. 19. To a point 582.5 ft. N. of E. & Cor. Sec. 19: T27N: R22W.
Give proper reference to Sections, Township and Range

GROSS LENGTH 4795.2 FEET 0.908 MILES
 LENGTH OF EXCEPTIONS FEET MILES
 NET LENGTH 4795.2 FEET 0.908 MILES
 PLAN, 1 Inch = 200 Feet
 PROFILE, Horz. 1 Inch = 200 Feet. Vert. 1 Inch = 20 Feet
 WORKING PLANS { Horz. 1 Inch = 100 Feet
 Vert. 1 Inch = 10 Feet
 Cross-Sections, 1 Inch = 10 Feet

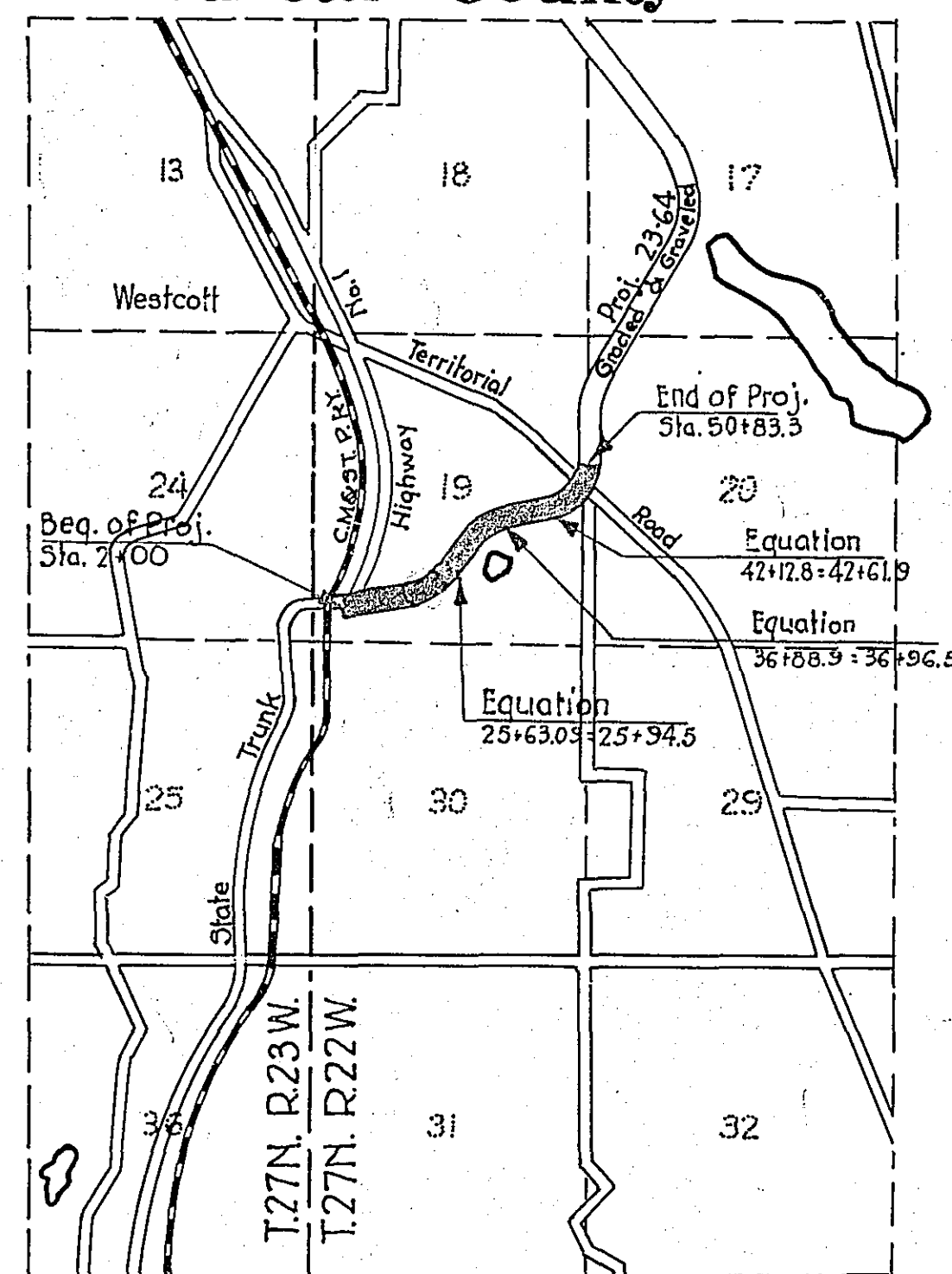
LAYOUT

SCALE, 1 Inch = .3520 Feet

INDEX OF SHEETS

- Sheet No. 1. Title Sheet and Layout Map
- " No. 2. Typical Cross-Sections and Statement
- " No. 3. Plan and Profile, Sta. 2+00 to Sta. 50+83.3
- " No. 4. to 8. incl. Cross-Sections
- " No. 9. Right-of-way Map

Dakota County



NOTE

GRAVEL SURFACING MATERIAL TAKEN FROM WITHIN RIGHT-OF-WAY LIMITS.
 CENTER OF PIT COMPUTED AT STATION 22+50.

12-29-24
 "B"

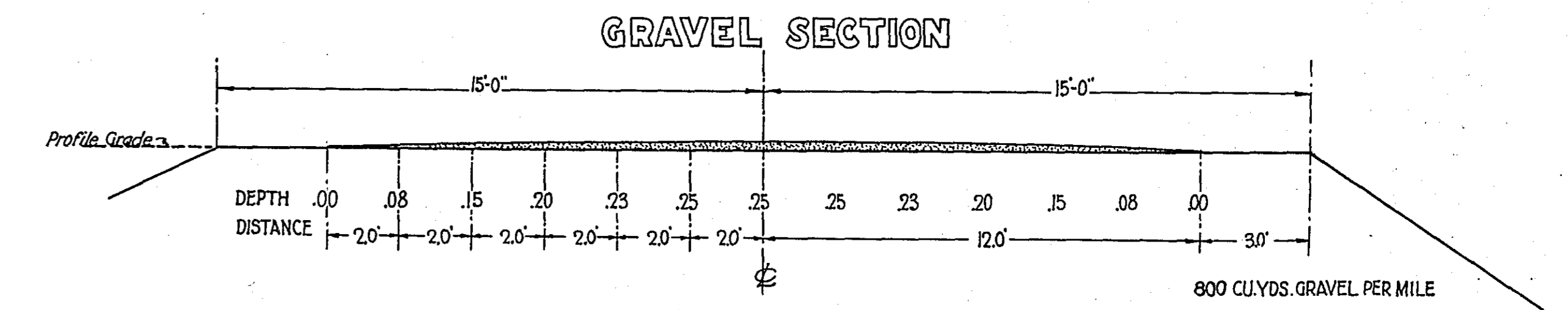
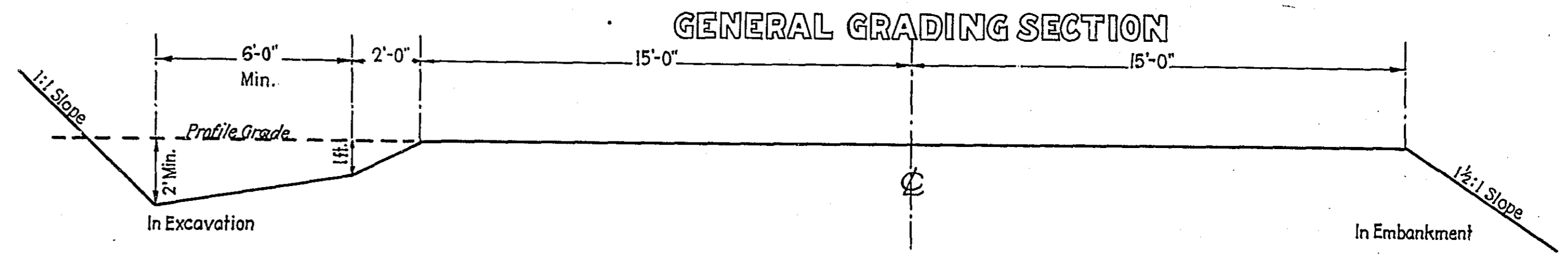
Date of Resolution for Preparation of Plans Aug 19 24
 Planned by R. J. Hollenale DESIGNING HIGHWAY ENGINEER
 Recommended for Approval E. J. Briggs CONSTRUCTION ENGINEER
 Plans Approved and Recommended for Consideration Paul H. Carter COUNTY SURVEYOR
 Approved by County Board _____ 19 _____ CHAIRMAN OF COUNTY BOARD

STATEMENT OF ESTIMATED QUANTITIES AND COSTS.

ITEM	UNIT	MILE ONE	MILE	MILE	MILE	MILE	MILE	MILE	MILE	MILE	MILE	TOTAL ESTIMATED QUANTITIES	ESTIMATED UNIT PRICES	AMOUNTS	TOTALS
		Sta. 2+00 to Sta. 50+183.9	Sta. to Sta.	Sta. to Sta.	Sta. to Sta.	Sta. to Sta.	Sta. to Sta.	Sta. to Sta.	Sta. to Sta.	Sta. to Sta.	Sta. to Sta.				
1	Clearing	Acre	1.70									1.70			
2	Clearing	Trees	43									43			
3	Clearing Brush	Acre	0.25									0.25			
4	Grubbing	Acre	1.70									1.70			
5	Grubbing	Trees	43									43			
6	Excavation - Earth	Cu. Yd.	49,285									49,285			
7	Excavation - Loose Rock	Cu. Yd.	300									300			
8	Excavation - Solid Rock	Cu. Yd.	100									100			
9	Excavation-Overhaul	Cu. Yd.	178,060									178,060			
10	Special Plowing	Lin. Ft.													
11	Special Excavation	Cu. Yd.													
12	Hand Ditching	Cu. Yd.	329									329			
13	Tile Drain	in. Lin. Ft.													
14	Tile Drain	in. Lin. Ft.													
15	Tile Drain	in. Lin. Ft.													
16	Tile Outlet Headwalls	Headwall													
17	Porous Backfill Material	Cu. Yd.													
18	Stone Drains	Lin. Ft.													
19	Stone Rip Rap	Cu. Yd.													
20	Heating Rip Rap or Stone Drain Material	Cu. Yd. Mile													
21	Concrete End Walls	Cu. Yd.													
22	Install and Haul 15" C. M.	Lin. Ft.	144									144			
23	Install and Haul " C. M.	Lin. Ft.													
24	Install 18" Ps	Lin. Ft.	108									108			
25	Install	Lin. Ft.													
26	Install 24" Ps	Lin. Ft.	402									402			
27	Install	Lin. Ft.													
28	Install " Pr	Lin. Ft.													
29	Install " Pr	Lin. Ft.													
30	Pr Culvert Haul	Ton Miles	128.57									128.57			
31	Guard Rail (wood)	Lin. Ft.	3890									3890			
32															
33															
TOTAL ESTIMATED COST OF GRADING (IN 'TOTALS' COLUMN)															22,469.53
34	C. M. Culv. Material	Lin. Ft.													
35	C. M. Culv. Material 15"	Lin. Ft.	144									144			
36	Culv. Material	Lin. Ft.													
37	Ps Culv. Material 18"	Lin. Ft.	108									108			
38	Culv. Material	Lin. Ft.													
39	Ps Culv. Material 24"	Lin. Ft.	402									402			
40	Culv. Material	Lin. Ft.													
41	Pr Culv. Material	Lin. Ft.													
42	Pr Culv. Material	Lin. Ft.													
TOTAL ESTIMATED COST OF PORTABLE CULVERT MATERIAL (IN 'TOTALS' COLUMN)															1,570.20
43	Gravel Pit Stripping	Cu. Yd.													
44	Screening	Cu. Yd.	727									727			
45	Load & Haul—0 to 1/2 Mile	Cu. Yd.	711									711			
46	Load & Haul—1/2 to 1 Mile	Cu. Yd.	16									16			
47	Load & Haul—1 Mile Point	Cu. Yd.													
48	Additional Haul Beyond 1 Mi.	Cu. Yd. Mile													
49	Shaping & Compacting	Man Hour	45									45			
50	Shaping & Compacting	Man & Team Hour	107									107			
51															
TOTAL ESTIMATED COST OF GRAVEL HAUL (IN 'TOTALS' COLUMN)															576.95
52	Gravel Material F. O. B. Pit	Cu. Yd.													
53	Freight (if any)	Cu. Yd.													
54	Unloading from Cars	Cu. Yd.													
TOTAL ESTIMATED COST OF GRAVEL MATERIAL (IN 'TOTALS' COLUMN)															
55	Fine Grading - Exc. & Emb.	Cu. Yd.													
56	Shoulder's - Earth	Cu. Yd.													
57	Overhaul - Earth Shoulders	Cu. Yd.													
58	Pavement	Sq. Yd.													
59	Integral Curb (one course concrete)	Lin. Ft.													
60															
61															
TOTAL ESTIMATED COST OF PAVEMENT CONSTRUCTION (IN 'TOTALS' COLUMN)															
62	Concrete	Cu. Yd.	27.70									27.70			
63	Reinforcing Steel	Lb.	1459									1459			
64	Structural Steel	Lb.													
65	Excavation - Earth	Cu. Yd.	5									5			
66	Excavation - Loose Rock	Cu. Yd.													
67	Excavation - Solid Rock	Cu. Yd.													
BRIDGES															
	Bridge	Bridge No. * Br. No.	Br. No.	Br. No.	Br. No.	Br. No.	Br. No.	Br. No.	Br. No.	Br. No.	Br. No.				
68	Concrete	Cu. Yd.													
69	Reinforcing Steel	Lb.													
70	Structural Steel	Lb.													
71	Piling	Lin. Ft.													
72	Temporary Crossing	Lump Sum													
73	Remove Old Bridge	Lump Sum													
74	Bituminous Surface	Sq. Yd.													
75															
TOTAL ESTIMATED COST OF STRUCTURES (IN 'TOTALS' COLUMN)															770.45
76	Guard Rail - Wood	Lin. Ft.													
77	Guard Rail - Concrete	Lin. Ft.													
78	Gutter - Plain Rubble	Sq. Yd.													
79	Gutter - Grouted Rubble	Sq. Yd.													
80	Excavation for Rubble Gutter	Cu. Yd.													
81	Gutter - Concrete	Lin. Ft.													
82	Curbing - Concrete	Lin. Ft.													
83															
84															
TOTAL ESTIMATED COST OF MISCELLANEOUS ITEMS (IN 'TOTALS' COLUMN)															25,387.13

TYPICAL CROSS-SECTIONS AND DETAILS.

FED. ROAD DIST. No.	STATE	FED. AID PROJ. No.	FISCAL YEAR	SHEET No.	TOTAL SHEETS
4	MINN.				

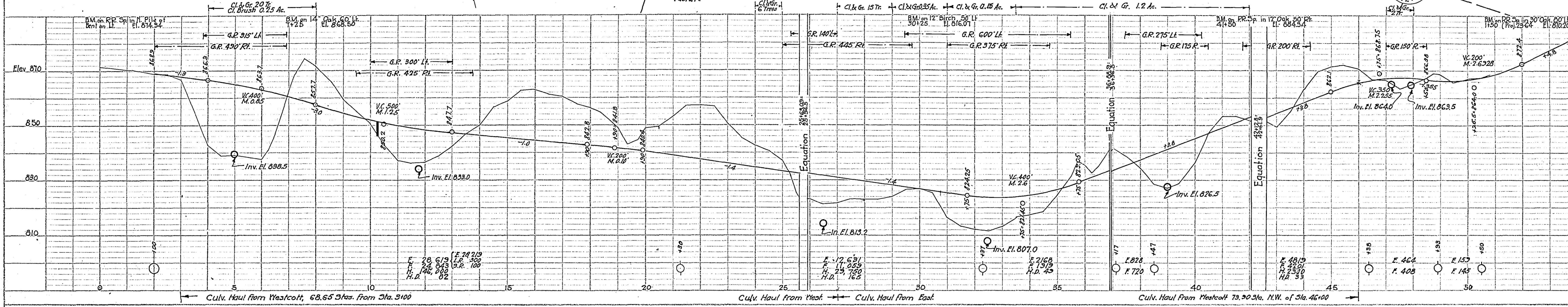
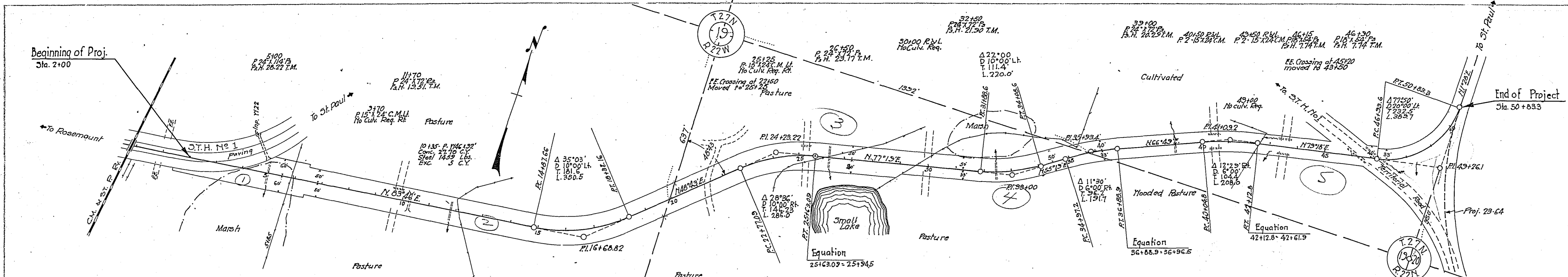


NOTE: BRIDGE ITEMS LISTED UNDER BRIDGE NUMBERS IN MILE COLUMNS REGARDLESS OF LOCATION

4601

DATE
BY
SUPERVISED
CHECKED
ALIGNED
NOTED
NO.

DATE
BY
SUPERVISED
CHECKED
NOTED
NO.



ESTIMATED QUANT.
STA. 2+00 to STA. 5+83.3

Cl.	43	Trees
Cl. G.F.	170	Acres
Cl. Brush	49	Acres
Exc.	49	C.Y.
S.P.	100	
H.D.	178	600
15' C.M.	144	Fl.
12' C.M.	106	
8' C.M.	126	Fl.
G.R.	3850	P.E.
Gravel Surfacing	270	C.Y.
Mon. Culv.	1458	600
Str.	1458	600
Exc.	1458	600