

CONVENTIONAL SIGNS & ABBREVIATIONS

STATE LINE	-----	EXCAVATION	-----	F
COUNTY LINE	-----	EMBANKMENT	-----	F
TOWNSHIP LINE	-----	OVERHAUL	-----	H
SECTION LINE	-----	SURFACING	-----	S
CITY, VILLAGE, OR BOROUGH	-----	GUARD RAIL	-----	GR
FENCE LINE	-----	INTERSECTION ANGLE	-----	A
RIGHT-OF-WAY LINE	-----	RADIUS	-----	R
TRAVELLED WAY	-----	ELEVATION	-----	EL
RAILROADS	-----	VERTICAL CURVE	-----	VC
RETAINING WALL	-----	BENCH MARK	-----	B.M.
BACK OR SURVEY LINE	-----	SECTIONAL CONCRETE CULVERT	-----	P.1
LEVEE	-----	CORRUGATED METAL CULVERT	-----	C.M.
GRAVEL PIT	-----	CULVERT HAUL	-----	P.H.
SAND PIT	-----	TON MILES	-----	T.M.
CLAY PIT	-----	PLACE	-----	P
ROCK QUARRY	-----	IN PLACE	-----	Inp
CULVERTS	-----	REPLACE	-----	Rep
PLAIN	-----	RIGHT	-----	R
WITH FACEWALLS	-----	LEFT	-----	L
WITH WINGWALLS	-----	HAND DITCHING	-----	H.D.
DROP INLET	-----	POINT OF CURVE	-----	P.C.
POWER POLE LINE	-----	POINT OF TANGENT	-----	P.T.
TELEPHONE OR TELEGRAPH LINE	-----	POINT OF INTERSECTION	-----	P.I.
MARSH	-----	SPECIAL EXCAVATION	-----	S.E.
HEDGE, BRUSH, OR TIMBER	-----	SPECIAL FLOWING	-----	S.P.
GROUND ELEVATION	-----	TELEPHONE POLE	-----	Te.P.
GRADE ELEVATION	-----			

STATE HIGHWAY DEPARTMENT
OF MINNESOTA
Plan and Profile of State Road No. 5

COUNTY OF RAMSEY

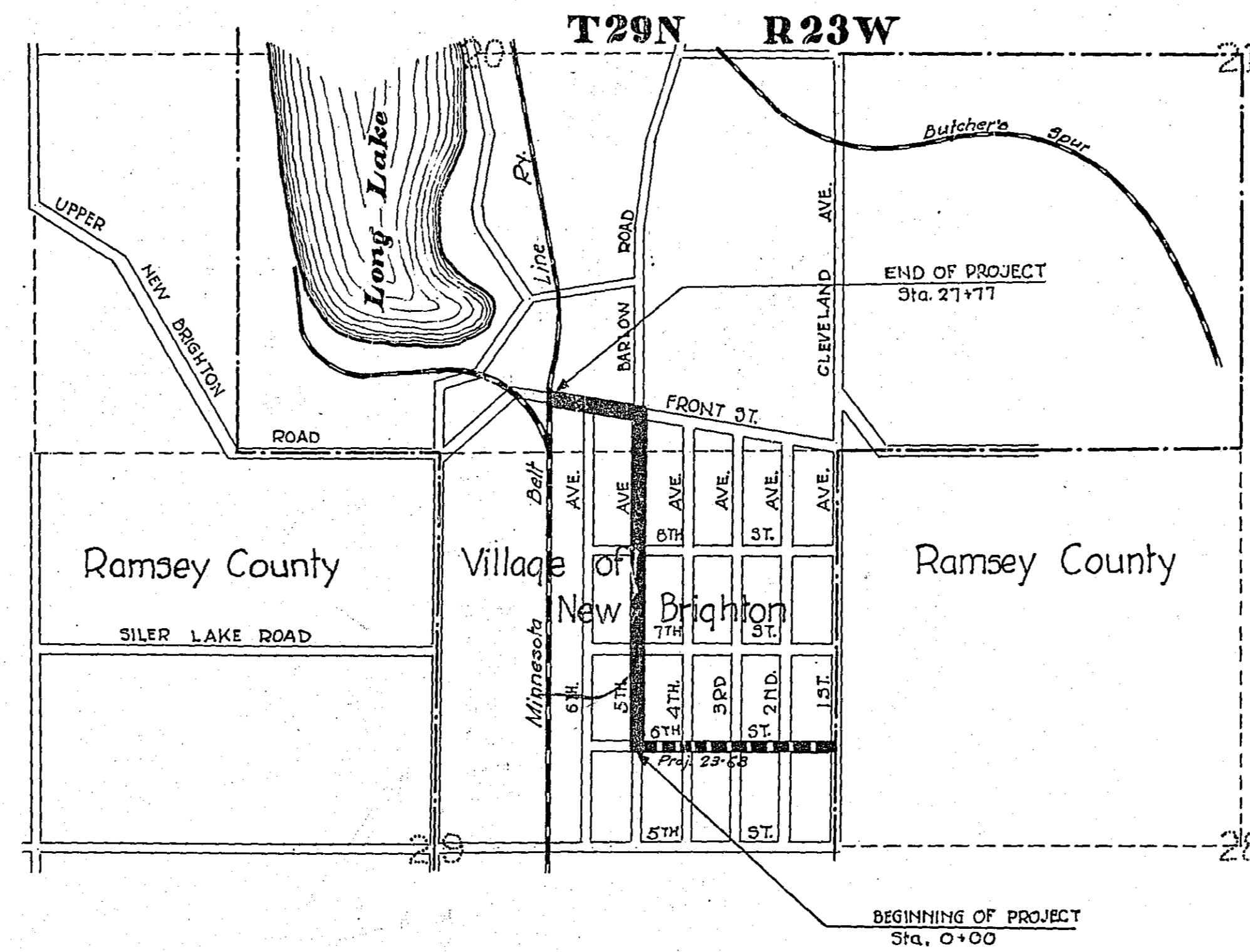
From a point 1309.36 ft. W. & 658.72 ft. N. of Cor. Sec. 29-30-23 To a point 1872.17 ft. W. & 512.15 ft. N. of SE. Cor. Sec. 20-30-23
Give proper reference to Sections, Township and Range

GROSS LENGTH - 2777 FEET 0.526 MILES
LENGTH OF EXCEPTIONS - FEET MILES
NET LENGTH - 2777 FEET 0.526 MILES
PLAN, 1 Inch = 100 Feet
PROFILE, Horz. 1 Inch = 100 Feet. Vert. 1 Inch = 10 Feet
WORKING PLANS { Horz. 1 Inch = 100 Feet
Vert. 1 Inch = 10 Feet
Cross-Sections, 1 Inch = 10 Feet

LAYOUT
SCALE, 1 Inch = 1000 Feet

INDEX OF SHEETS

- Sheet No. 1. Title Sheet and Layout Map
- " No. 2. Typical Cross-Sections and Statement
- " No. 3. Plan and Profile, Sta. 0+00 to Sta. 27+77
- " No. 4 & 5 Cross-Sections, Sta. 0+00 to Sta. 27+77
- " No. 6 Details of Intersections
- " No. 7 Details of Paving Construction



RECEIVED FIRST	FILED
RETURNED TO ENG'G	
RECEIVED SECOND	
TO DISTRICT ENG'G	
APPROVED	
FROM OFFICE ENG'G	
FILED	

Planned by Paul H. Coates
HIGHWAY ENGINEER FOR Ramsey COUNTY.
Recommended for Approval M. A. Chapman
DIVISION ENGINEER
Recommended for Approval O. L. Kipp
CONSTRUCTION ENGINEER
Approved 11-22-1924 John H. Miller
CHIEF ENGINEER & DEPUTY COMMISSIONER
4501

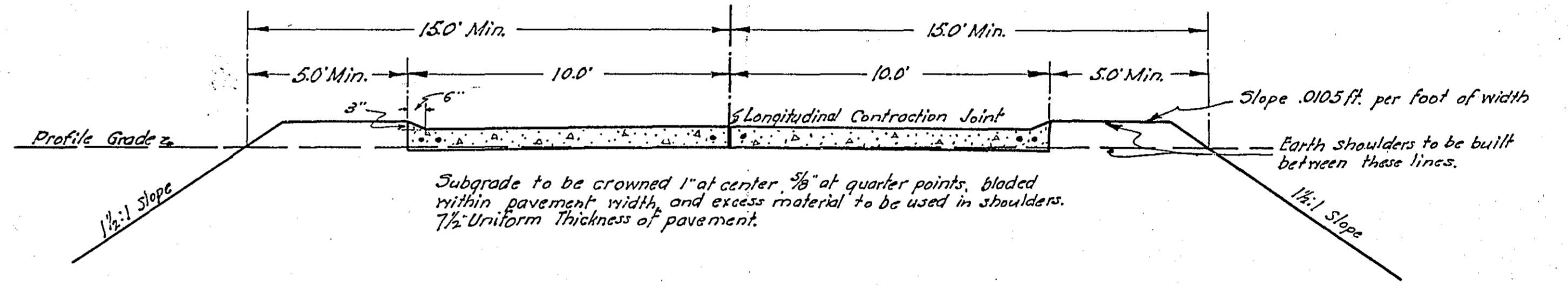
Portion of Co. Rd. F.

STATEMENT OF ESTIMATED QUANTITIES AND COSTS.

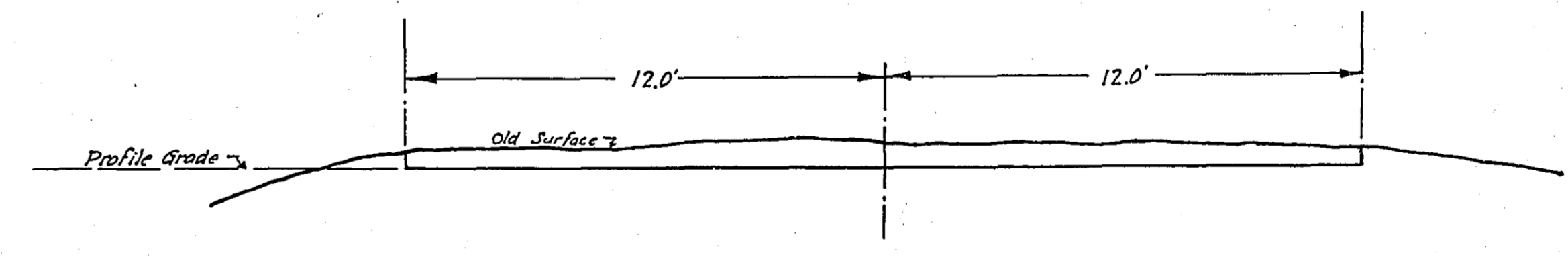
Main table with columns: ITEM, UNIT, MILE ONE, MILE TWO, MILE THREE, MILE FOUR, MILE FIVE, MILE SIX, MILE SEVEN, MILE EIGHT, MILE NINE, MILE TEN, TOTAL ESTIMATED QUANTITIES, ESTIMATED UNIT PRICES, AMOUNTS, TOTALS. Includes sub-sections for GRADING, PORTABLE CULVERTS, GRAVEL HAUL, GRAVEL MATERIAL, PAVEMENT CONSTRUCTION, STRUCTURES, and MISCELLANEOUS.

TYPICAL CROSS-SECTIONS AND DETAILS.

Table with columns: FED. ROAD DIST. NO., STATE, FED. AID PROJ. NO., FISCAL YEAR, SHEET NO., TOTAL SHEETS. Values: 4, MINN., , , 4, 7.



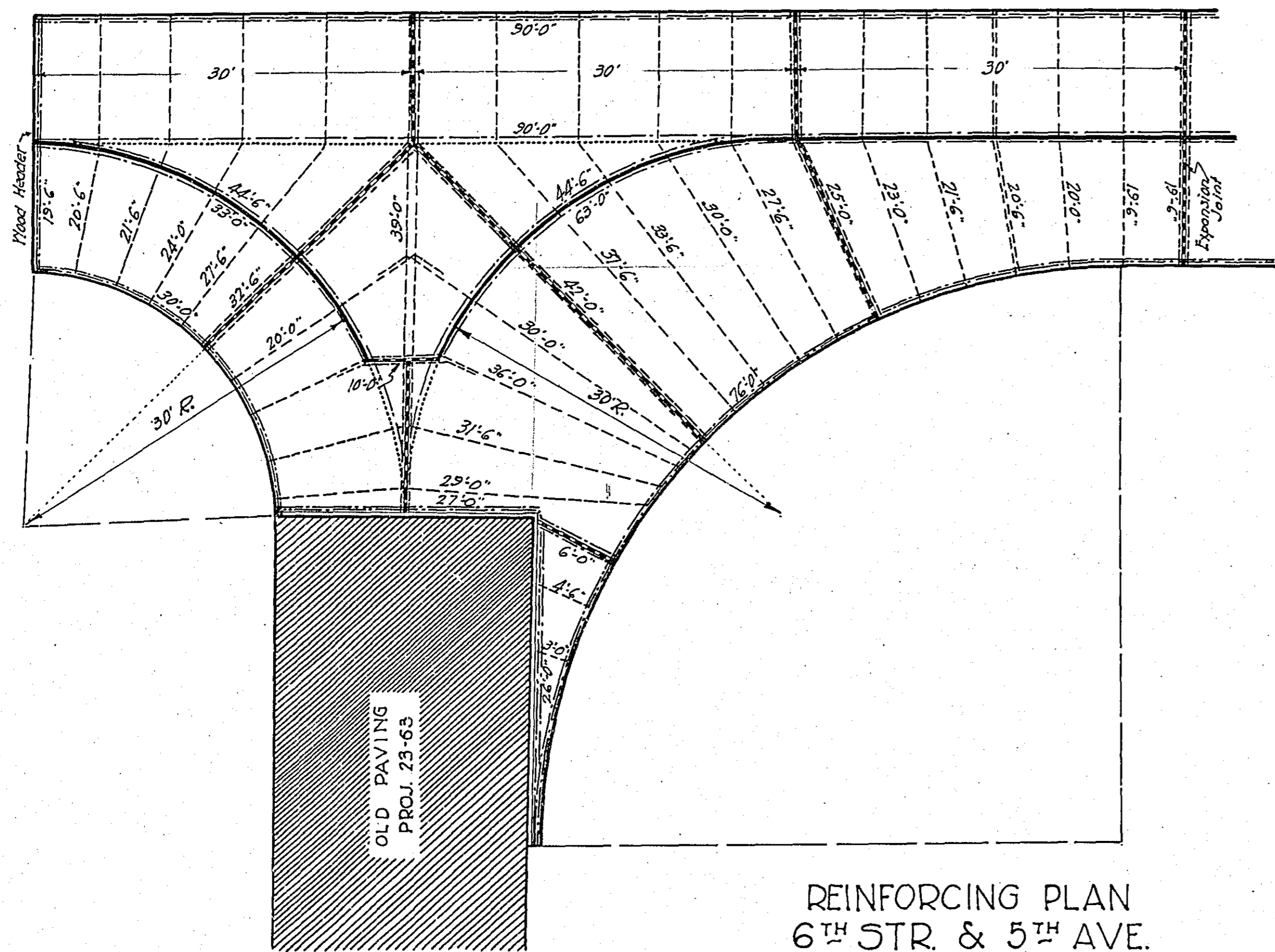
ONE COURSE CONCRETE PAVEMENT



TYPICAL EXCAVATION SECTION

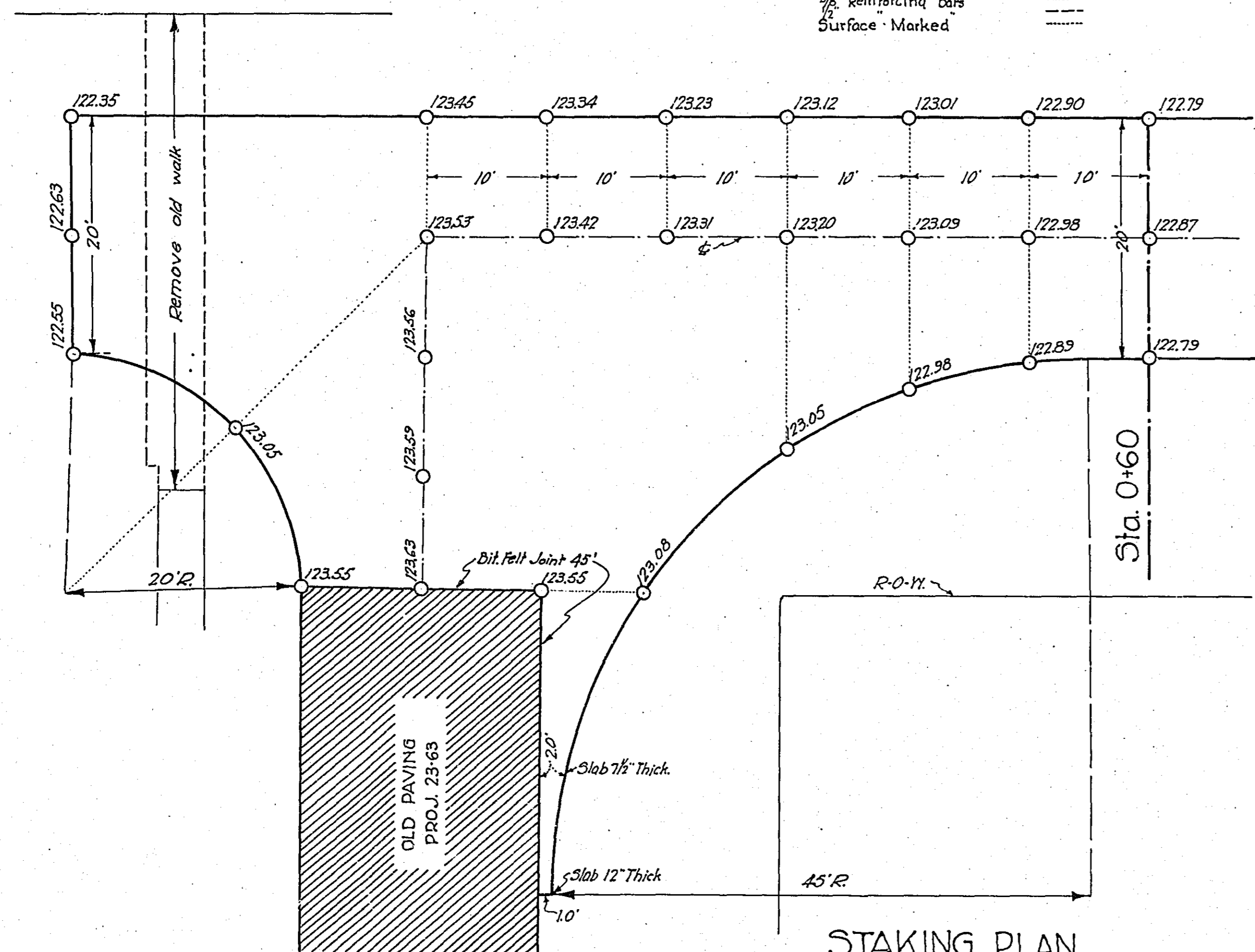
* NOTE: BRIDGE ITEMS LISTED UNDER BRIDGE NUMBERS IN MILE COLUMNS REGARDLESS OF LOCATION

4501



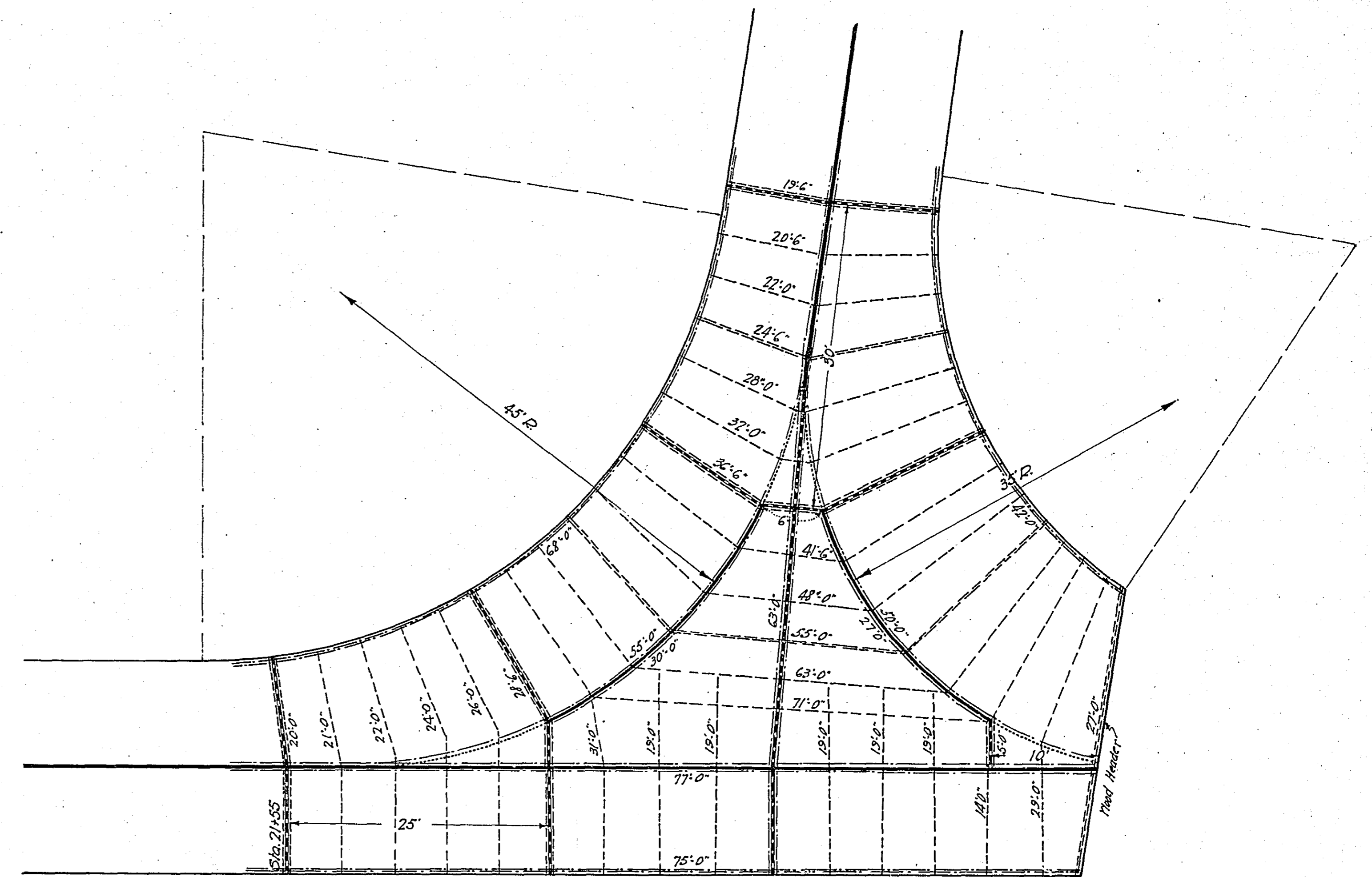
REINFORCING PLAN
6TH STR. & 5TH AVE.
Scale 1"=10'

Exposed Contraction Joint
Concealed
Reinforcing Bars
Surface - Marked



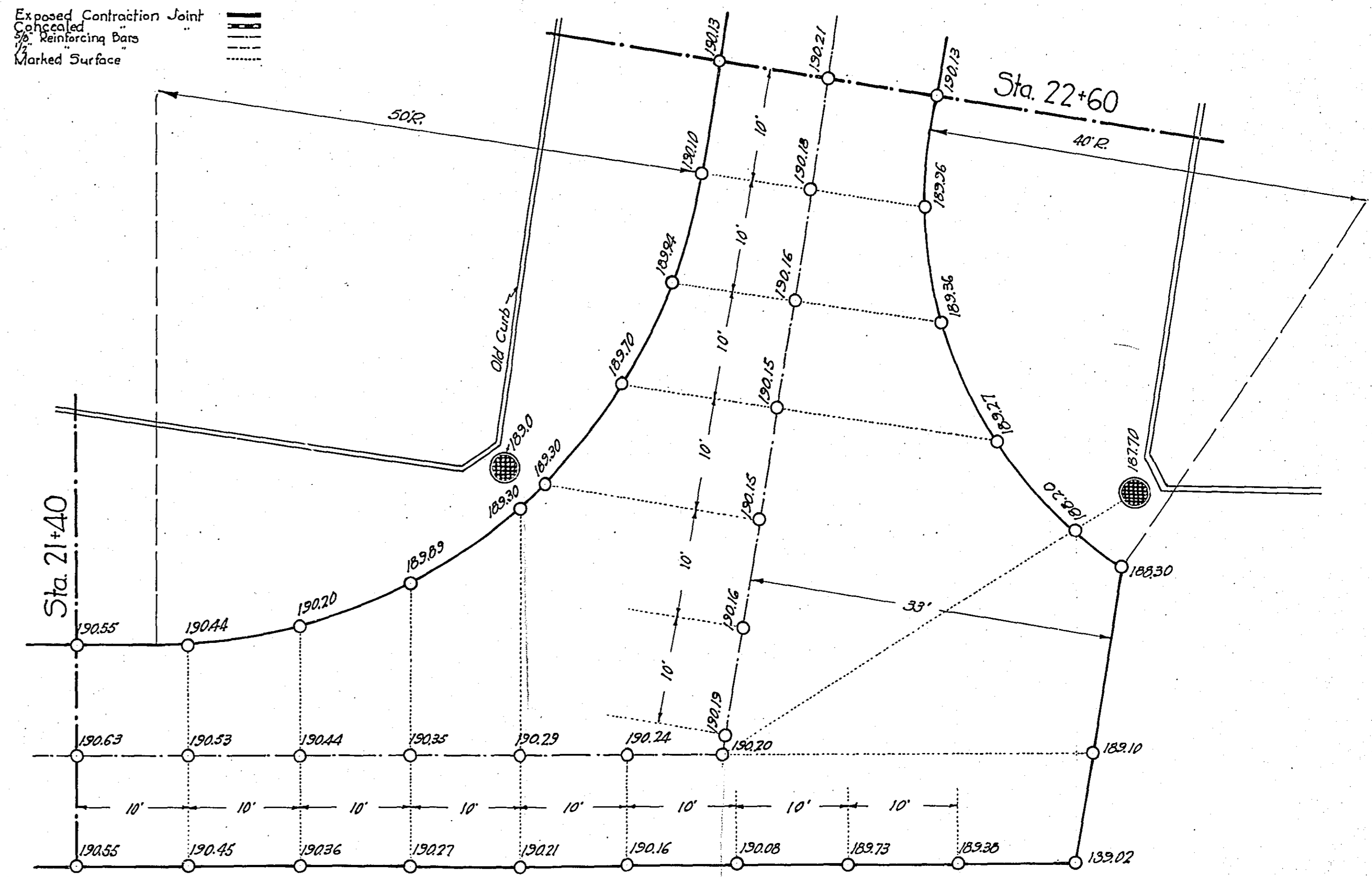
STAKING PLAN
6TH STR. & 5TH AVE.
Scale 1"=10'

Pavement area Sta. 0+00 to Sta. 0+60
305.77 S.Y.



REINFORCING PLAN
5TH AVE. & FRONT STR.
Scale 1"=10'

Exposed Contraction Joint
Concealed
Reinforcing Bars
Marked Surface



STAKING PLAN
5TH AVE. & FRONT ST.
Scale 1"=10'

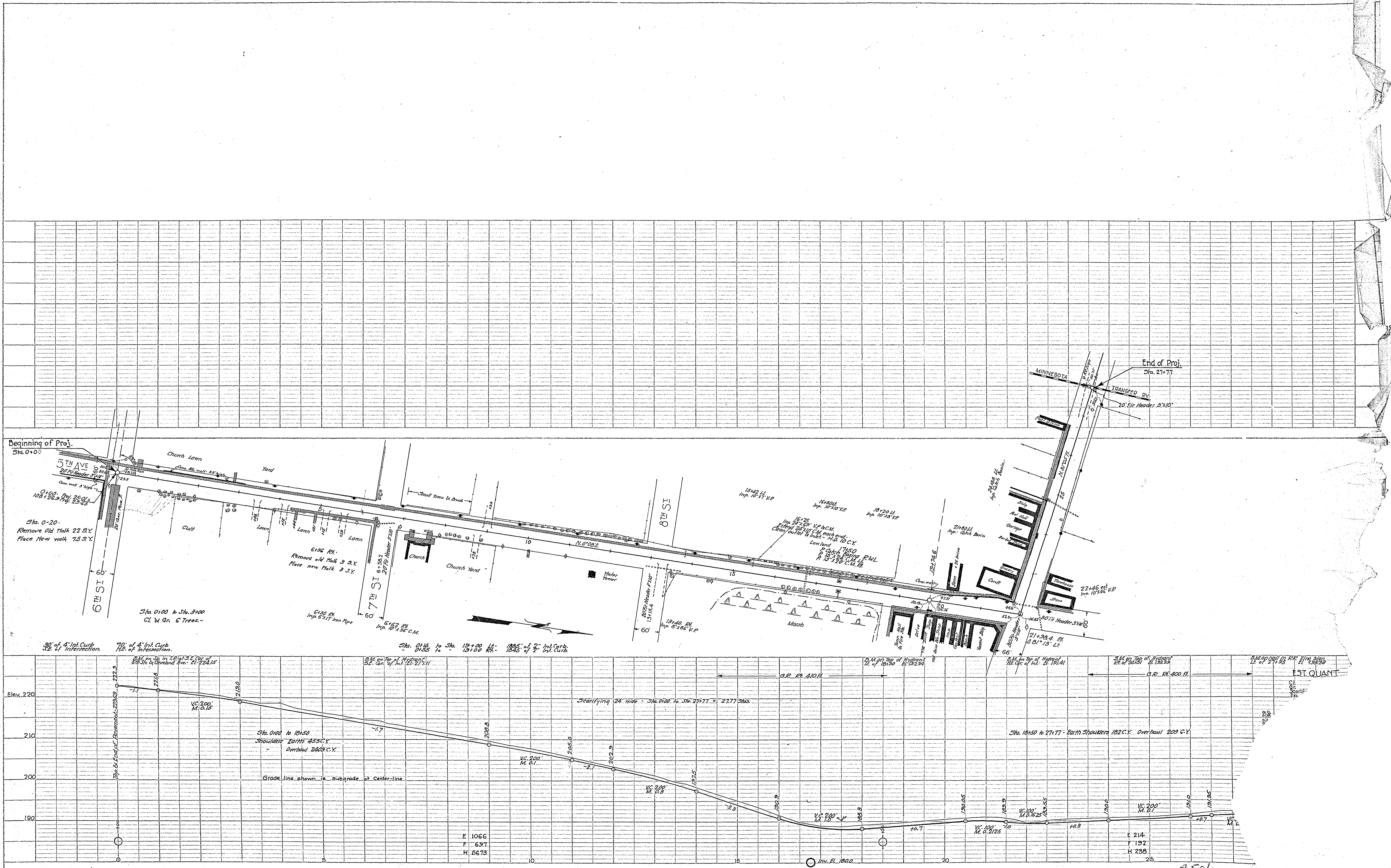
Pavement Area Sta. 21+40 to Sta. 22+60
407.33 S.Y.

DETAILS OF INTERSECTIONS

4501 HDVK

PLAN	SURVEYED	DATE
NOTE BOOK	NO.	
PLOTTED	BY	
CHECKED	BY	
DATE		

PROFILE	SURVEYED	DATE
NOTE BOOK	NO.	
PLOTTED	BY	
CHECKED	BY	
DATE		



E 1066
F 637
H 5673

E 214
F 192
H 238