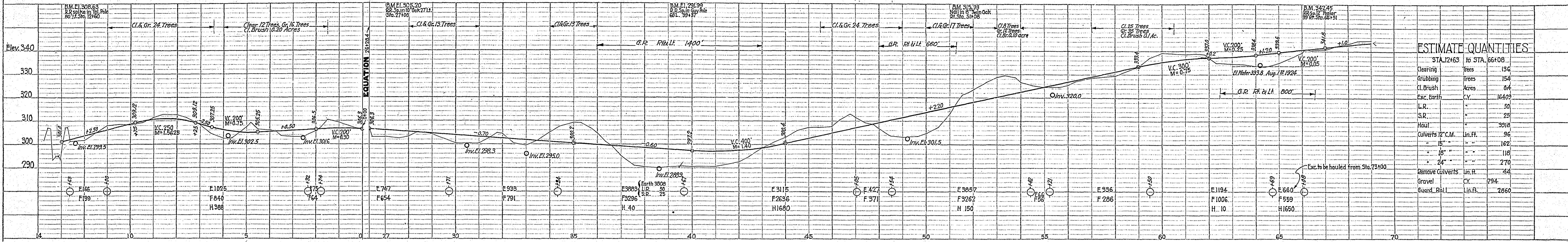
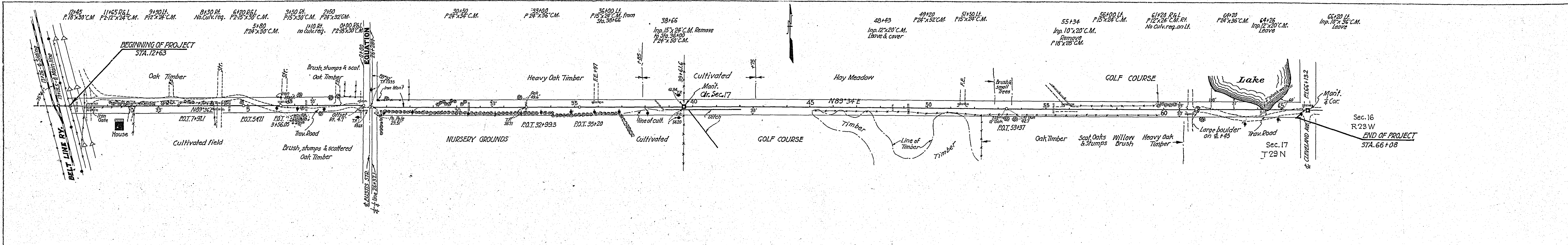


PLAN SURVEYED
 PLOTTED
 NOTE BOOK
 ALIGNMENT CHECKED
 NO. OF STAKES CHECKED

PROFILE SURVEYED
 PLOTTED
 NOTE BOOK
 GRADES CHECKED
 STRUCTURE NOTATIONS CHECKED



ESTIMATE QUANTITIES

STA. 12+63 to STA. 66+08

Clearing	Trees	130
Grubbing	Trees	154
Cl. Brush	Acres	84
Exc. Earth	C.Y.	16409
L.R.		50
S.R.		25
Haul		3018
Curverts 12' C.M.	lin. ft.	96
" 15' "	" "	162
" 18' "	" "	118
" 24' "	" "	270
Remove Curverts	lin. ft.	44
Gravel	C.Y.	794
Guard Rail	lin. ft.	2860

CONVENTIONAL SIGNS & ABBREVIATIONS

STATE LINE	-----	EXCAVATION	-----	F
COUNTY LINE	-----	EMBANKMENT	-----	F
TOWNSHIP LINE	-----	OVERHAUL	-----	H
SECTION LINE	-----	SURFACING	-----	S
CITY, VILLAGE, OR BOROUGH	-----	GUARD RAIL	-----	GR
FENCE LINE	-----	INTERSECTION ANGLE	-----	A
RIGHT-OF-WAY LINE	-----	RADIUS	-----	R
TRAVELLED WAY	-----	ELEVATION	-----	EL
RAILROADS	-----	VERTICAL CURVE	-----	VC
RETAINING WALL	-----	BENCH MARK	-----	B.M.
BASE OR SURVEY LINE	-----	SECTIONAL CONCRETE CULVERT	-----	P.C.
LEVEE	-----	CORRUGATED METAL CULVERT	-----	C.M.
GRAVEL PIT	-----	CULVERT HAUL	-----	P.H.
SAND PIT	-----	TOW MILES	-----	T.M.
CLAY PIT	-----	PLACE	-----	P
ROCK QUARRY	-----	IN PLACE	-----	INP.
CULVERTS	-----	REPLACE	-----	REP.
PLAIN	-----	RIGHT	-----	R
WITH FACEWALLS	-----	LEFT	-----	L
WITH WINGWALLS	-----	HAND DITCHING	-----	H.D.
DROP INLET	-----	POINT OF CURVE	-----	P.C.
POWER POLE LINE	-----	POINT OF TANGENT	-----	P.T.
TELEPHONE OR TELEGRAPH LINE	-----	POINT OF INTERSECTION	-----	P.I.
MARSH	-----	SPECIAL EXCAVATION	-----	S.E.
HEDGE, BRUSH, OR TIMBER	-----	SPECIAL FLOWING	-----	S.P.
GROUND ELEVATION	-----	TELEPHONE POLE	-----	Tel.P.
GRADE ELEVATION	-----			

OFFICE OF COUNTY ENGINEER

RAMSEY COUNTY

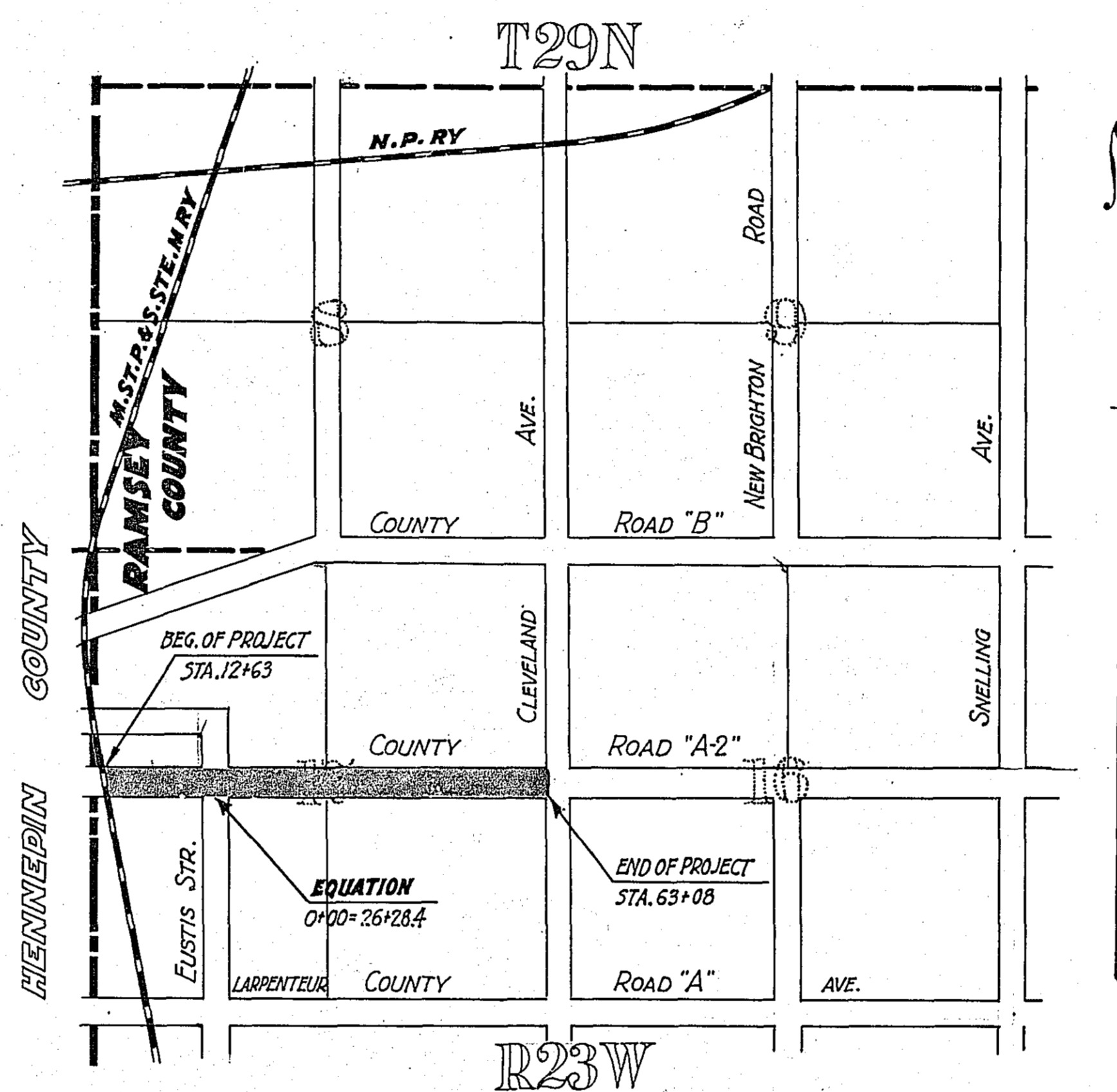
Plan and Profile of County Project No. 24-57

From a point 2596.2' W. & 4.7' N. of the Ctr. Sec. 17 T29N-R23W To a point 5.2' W. of the $\frac{1}{4}$ Cor. bet. Secs. 16-17 T29N-R23W

GROSS LENGTH... 5242.6 FEET... .993 MILES
 LENGTH OF EXCEPTIONS... FEET... MILES
 NET LENGTH... 5242.6 FEET... .993 MILES
 PLAN, 1 Inch = 200 Feet; Vert. 1 Inch = 20 Feet
 PROFILE, Horz. 1 Inch = 200 Feet; Vert. 1 Inch = 20 Feet
 SCALES WORKING PLANS { Horz. 1 Inch = 100 Feet
 Vert. 1 Inch = 10 Feet
 Cross-Sections, 1 Inch = Feet

LAYOUT

SCALE, 1 Inch = .1760 Feet



INDEX OF SHEETS

- Sheet No. 1. Title Sheet and Layout Map
- " No. 2. Typical Cross-Sections and Statement
- " No. 3. Plan and Profile, Sta. 12+63 to Sta. 66+08
- " No. 4 to 5. CROSS SECTIONS

Date of Resolution for Preparation of Plans Aug. 11, 1924

Planned by R. J. Maloney DESIGNING HIGHWAY ENGINEER

Recommended for Approval E. J. Briggs CONSTRUCTION ENGINEER

Plans Approved and Recommended for Consideration Paul M. Coates COUNTY SURVEYOR

Approved by County Board _____ 19 _____ CHAIRMAN OF COUNTY BOARD

