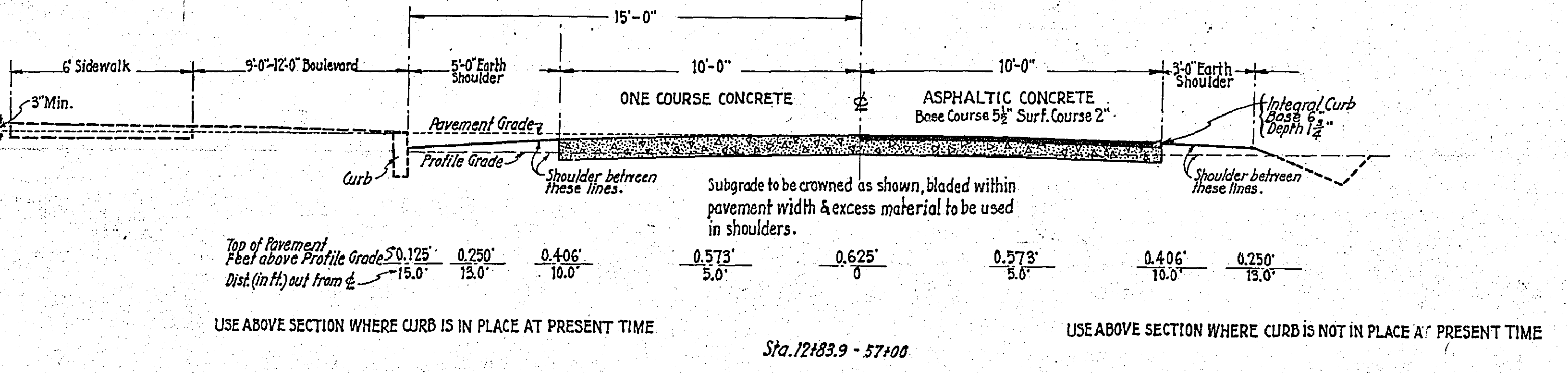
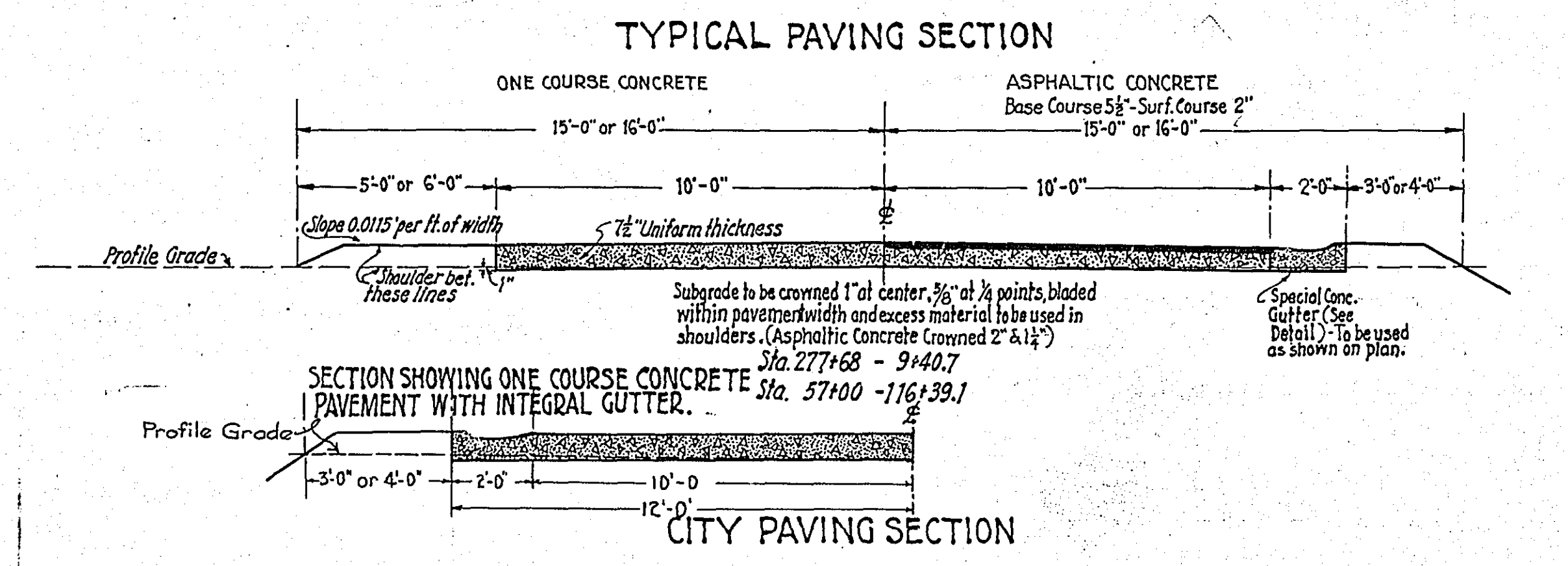
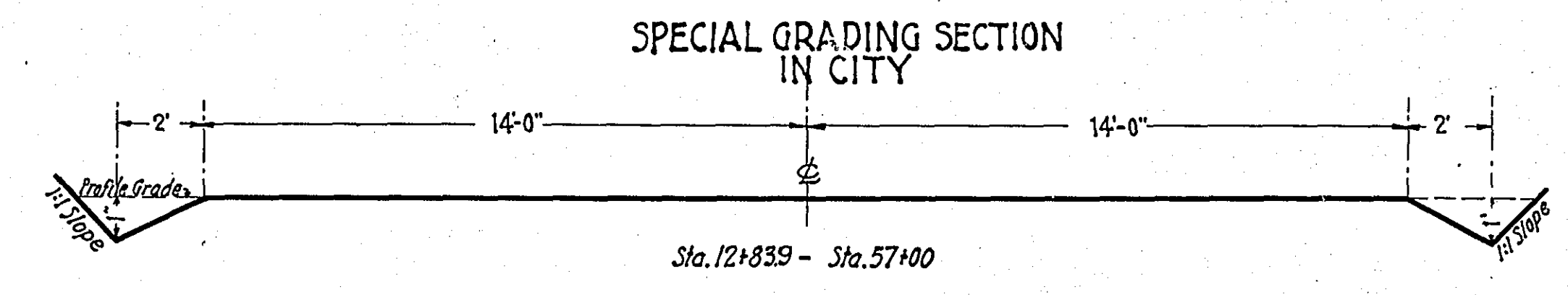
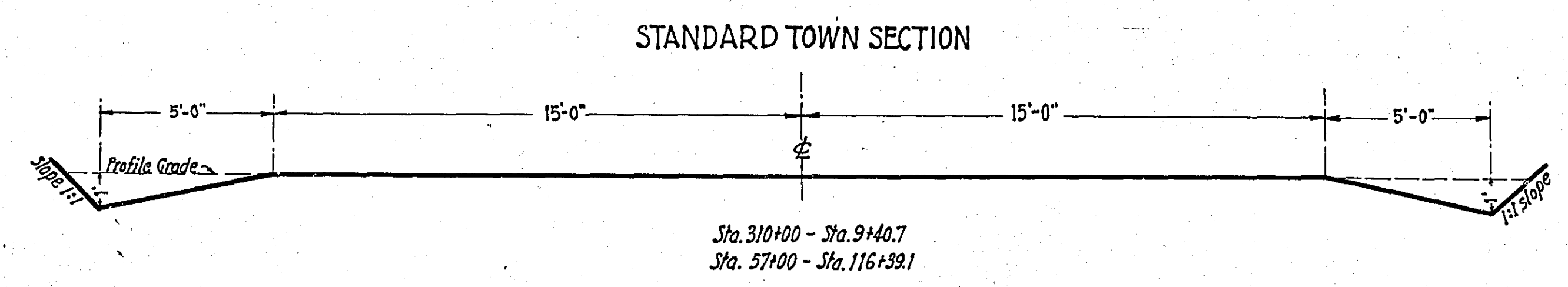
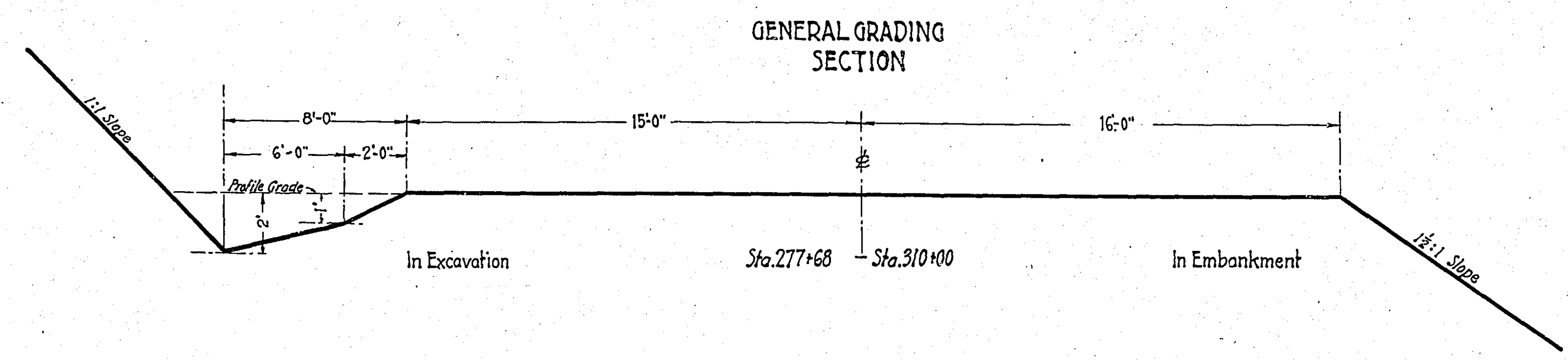


STATEMENT OF ESTIMATED QUANTITIES AND COSTS.

ITEM	UNIT	MILE ONE	MILE TWO	MILE THREE	MILE	MILE	MILE	MILE	MILE	MILE	MILE	TOTAL ESTIMATED QUANTITIES	ESTIMATED UNIT PRICES	AMOUNTS	TOTALS
		Sta. 277+68 to Sta. 314+37	Sta. 12+839 to Sta. 66+100	Sta. 44+100 to Sta. 116+391	Sta. to Sta.	Sta. to Sta.	Sta. to Sta.	Sta. to Sta.	Sta. to Sta.	Sta. to Sta.	Sta. to Sta.				
1	Clearing	Acres													
2	Clearing	Trees	17		36							53			
3	Clearing Brush	Acres	0.1									0.1			
4	Grubbing	Acres													
5	Grubbing	Trees	17		36							53			
6	Excavation - Earth	Cu. Yd.	3610	5238	3096							11,944			
7	Excavation - Loose Rock	Cu. Yd.	30									30			
8	Excavation - Solid Rock	Cu. Yd.	30									30			
9	Excavation - Overhaul	Cu. Yd.	2045	128,540	36							130,621			
10	Special Plowing	Lin. Ft.													
11	Scarifying	Sta. to Sta.	54.90	53.17	50.79							158.85			
12	Hand Ditching	Cu. Yd.			20							20			
13	15" Vit. Sewer Pipe (Complete in place)	Lin. Ft.		186								186			
14	Tile Drain	in. Lin. Ft.													
15	Tile Drain	in. Lin. Ft.													
16	Tile Outlet Headwalls	Headwall													
17	Porous Backfill Material	Cu. Yd.													
18	Stone Drains	Lin. Ft.													
19	Stone Rip Rap	Cu. Yd.													
20	Hauling Rip Rap or Stone from Site	Cu. Yd. Mile													
21	Concrete End Walls	Cu. Yd.													
22	Install and Haul 12" C. M.	Lin. Ft.	302	462	176							940			
23	Install and Haul 15" C. M.	Lin. Ft.	224	106								330			
24	Install " 18" "	Lin. Ft.	46									46			
25	Install " 48" "	Lin. Ft.			8							8			
26	Install	Lin. Ft.													
27	Install	Lin. Ft.													
28	Install 24" P.	Lin. Ft.	132		156							288			
29	Install P.	Lin. Ft.													
30	P. Culvert Haul	Ton Miles	2222		33.00							62.22			
31	Guard Rail	Lin. Ft.			580.0							580.0			
32	Removing C.M.	" "	20									20			
33	Replacing C.M.	" "	20									20			
TOTAL ESTIMATED COST OF GRADING (IN 'TOTALS' COLUMN)															13,121.84
34	C. M. Culv. Material 12"	Lin. Ft.	302	462	176							940			
35	C. M. Culv. Material 15"	Lin. Ft.	224	106								330			
36	C. M. Culv. Material 18"	Lin. Ft.	46									46			
37	C. M. Culv. Material 48"	Lin. Ft.			8							8			
38	Culv. Material	Lin. Ft.													
39	Culv. Material	Lin. Ft.													
40	Culv. Material	Lin. Ft.													
41	P. Culv. Material 24"	Lin. Ft.	132		156							288			
42	P. Culv. Material	Lin. Ft.													
TOTAL ESTIMATED COST OF PORTABLE CULVERT MATERIAL (IN 'TOTALS' COLUMN)															2767.50
43	Gravel Pit Stripping	Cu. Yd.													
44	Screening	Cu. Yd.													
45	Load & Haul - 0 to 1/2 Mile	Cu. Yd.													
46	Load & Haul - 1/2 to 1 Mile	Cu. Yd.													
47	Load & Haul - 1 Mile Point	Cu. Yd.													
48	Additional Haul Beyond 1 Mi.	Cu. Yd. Mile													
49	Shaping & Compacting	Man Hour													
50	Shaping & Compacting	Man & Team Hour													
51															
TOTAL ESTIMATED COST OF GRAVEL HAUL (IN 'TOTALS' COLUMN)															
52	Gravel Material F. O. B. Pit	Cu. Yd.													
53	Freight (If any)	Cu. Yd.													
54	Unloading from Cars	Cu. Yd.													
TOTAL ESTIMATED COST OF GRAVEL MATERIAL (IN 'TOTALS' COLUMN)															
55	Shoulders - Earth	Cu. Yd.													
56	Shoulders - Earth	Cu. Yd.	1377	1060	1219							3656			
57	Overhaul - Earth Shoulders	Cu. Yd.	2397	1080	921							4398			
58	Pavement - Plain One Course	Sq. Yd.	10,206.73	11,921.98	11,349.98							33,478.69			
59	Pavement with Int. Gutter	" "	4,173.72									4,173.72			
60	Concrete Gutter	Lin. Ft.	3190.3	156.1								3346.40			
61	Integral Curb	" "	2,237.8		6.617							2898.20			
TOTAL ESTIMATED COST OF PAVEMENT CONSTRUCTION (IN 'TOTALS' COLUMN)															98,509.35
62	Concrete	Cu. Yd.													
63	Reinforcing Steel	Lb.													
64	Structural Steel	Lb.													
65	Excavation - Earth	Cu. Yd.													
66	Excavation - Loose Rock	Cu. Yd.													
67	Excavation - Solid Rock	Cu. Yd.													
		Bridge No. *	Br. No.	Br. No.	Br. No.	Br. No.	Br. No.	Br. No.	Br. No.	Br. No.	Br. No.				
		Station No.													
68	Concrete	Cu. Yd.													
69	Reinforcing Steel	Lb.													
70	Structural Steel	Lb.													
71	Piling	Lin. Ft.													
72	Temporary Crossing	Lump Sum													
73	Remove Old Bridge	Lump Sum													
74	Bituminous Surface	Sq. Yd.													
75															
TOTAL ESTIMATED COST OF STRUCTURES (IN 'TOTALS' COLUMN)															
76	P. Walls - Concrete	Cu. Yds.	2.51		9.65							12.16			
77	Steel Reinforcing	Lbs.	154		293							447			
78	Gutter - Plain Rubble	Sq. Yd.													
79	Gutter - Grouted Rubble	Sq. Yd.													
80	Excavation for Rubble Gutter	Cu. Yd.													
81	Gutter - Concrete	Lin. Ft.													
82	Curbing - Concrete	Lin. Ft.													
83	Catch Basins (Complete)	Each	11	3	3							17			
84	Seeding Shoulders & Slopes	100 Sq. Yds.	159.21	154.19	147.26							460.66			
TOTAL ESTIMATED COST OF MISCELLANEOUS ITEMS (IN 'TOTALS' COLUMN)															1430.53
GRAND TOTAL ESTIMATED COST															115,829.22

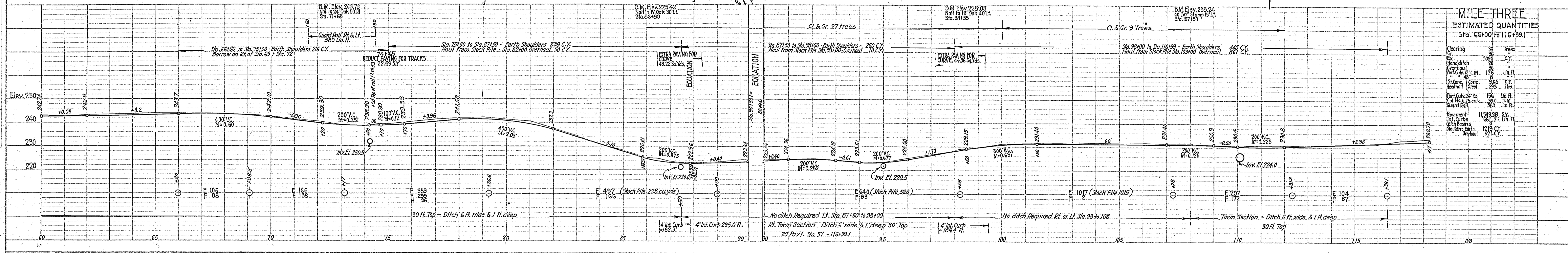
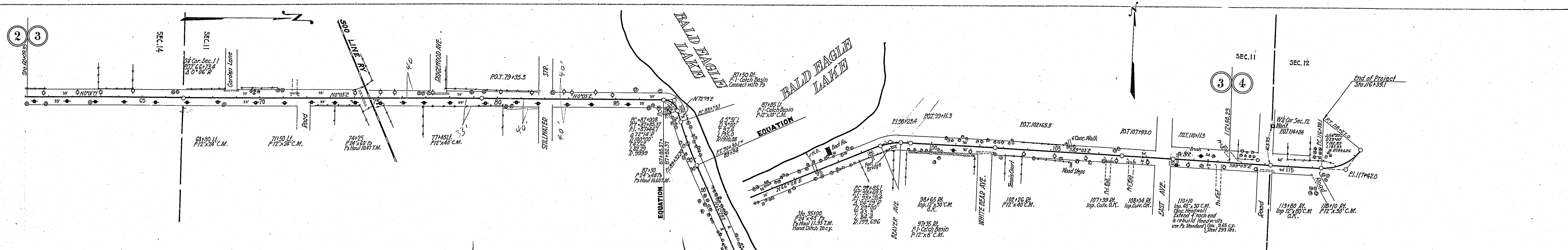
TYPICAL CROSS-SECTIONS AND DETAILS.

FED. ROAD DIST. NO.	STATE	FED. AID PROJ. NO.	REG. PROJ. NO.	SHEET NO.	TOTAL SHEETS



* NOTE: BRIDGE ITEMS LISTED UNDER BRIDGE NUMBERS IN MILE COLUMNS REGARDLESS OF LOCATION

4301



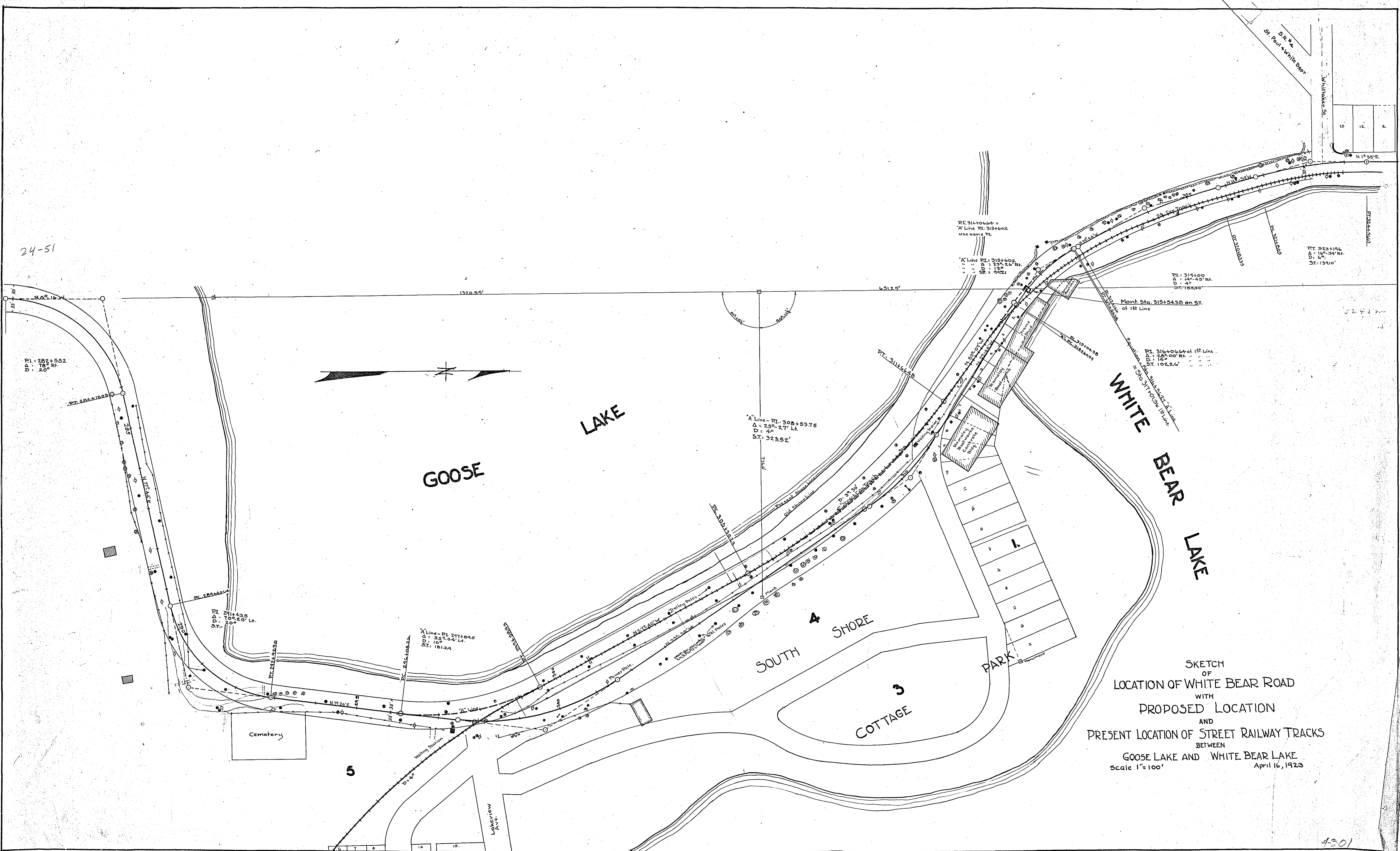
MILE THREE ESTIMATED QUANTITIES
Sta. 66+00 to 116+39.1

Clearing	8	Trees	3
Gravel	305	C.Y.	
Hand Ditch	305	C.Y.	
Prop. Gravel	175	Lin. Ft.	
Prop. Gravel	35	C.Y.	
Prop. Gravel	25	Lin. Ft.	
Prop. Gravel	15	Lin. Ft.	
Prop. Gravel	35	T.M.	
Prop. Gravel	50	Lin. Ft.	
Prop. Gravel	12.5	C.Y.	
Prop. Gravel	61.7	Lin. Ft.	
Prop. Gravel	11,359.99	SY	
Prop. Gravel	12.5	C.Y.	
Prop. Gravel	92.7	C.Y.	

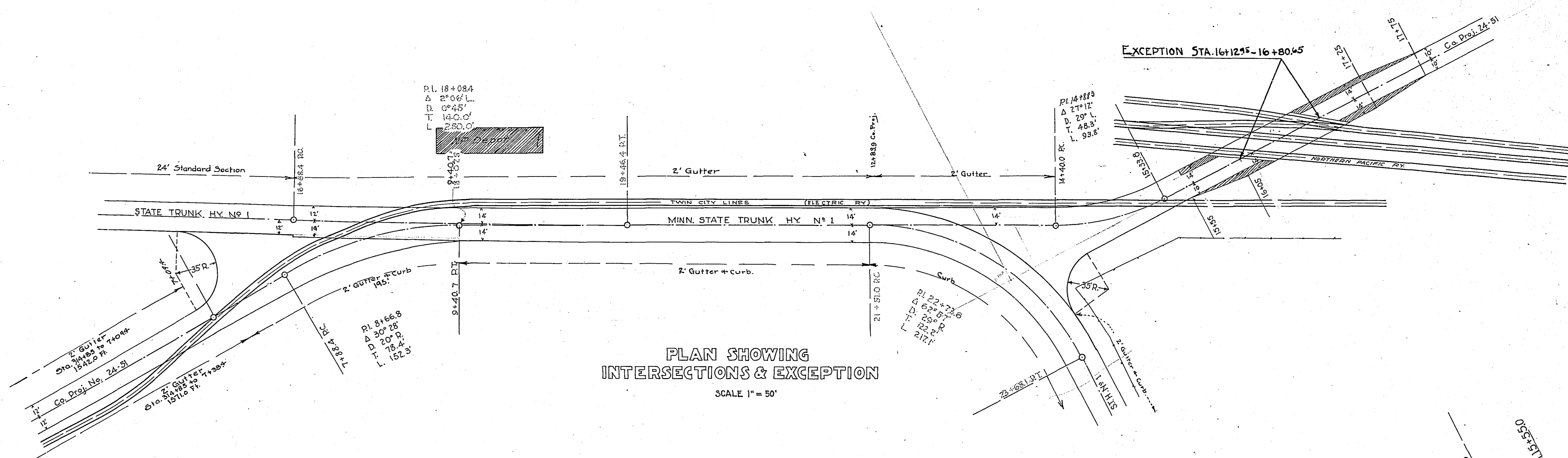
PLAN
SURVEYED BY: _____
DATE: _____
NOTE BOOK NO.: _____
CHECKED BY: _____
DATE: _____

PROFILE
SURVEYED BY: _____
DATE: _____
NOTE BOOK NO.: _____
CHECKED BY: _____
DATE: _____

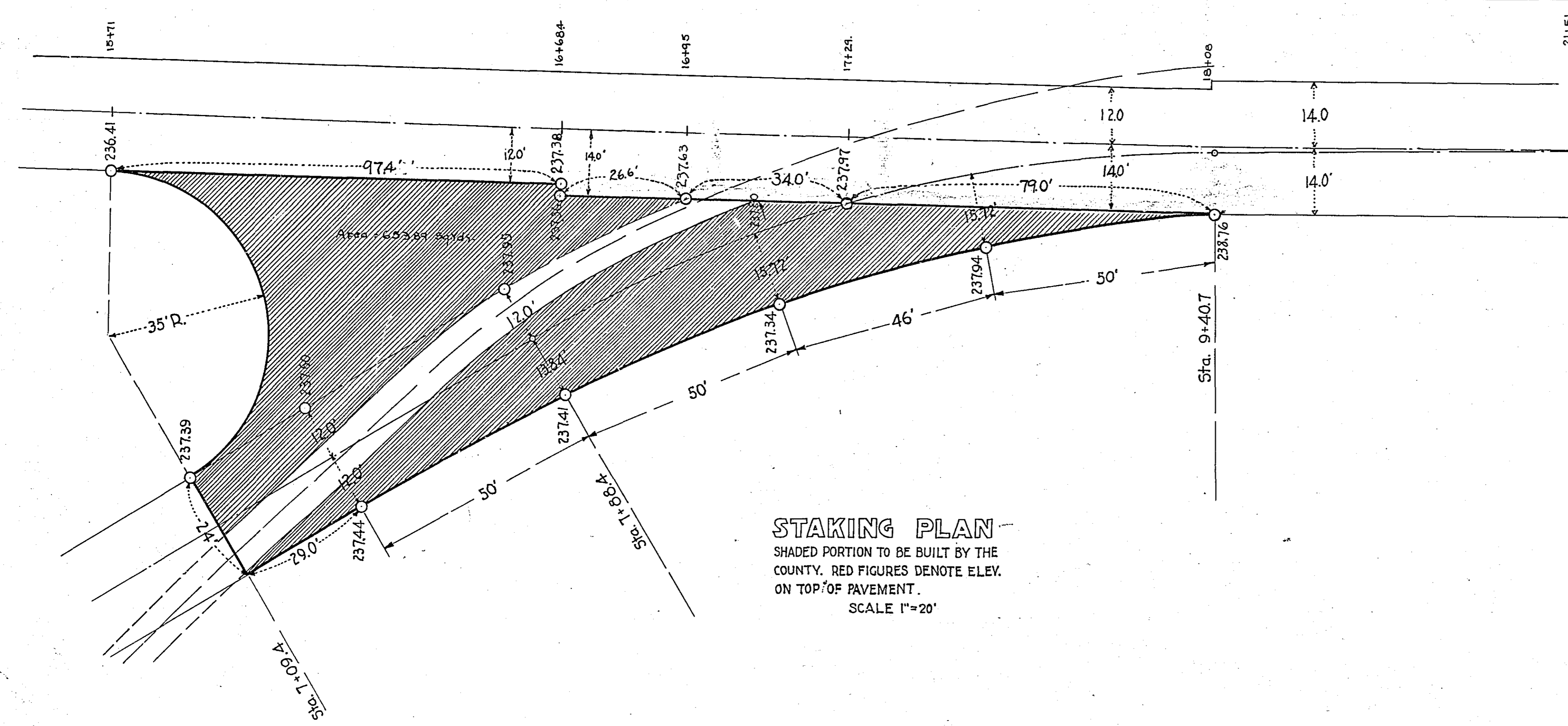
24-51



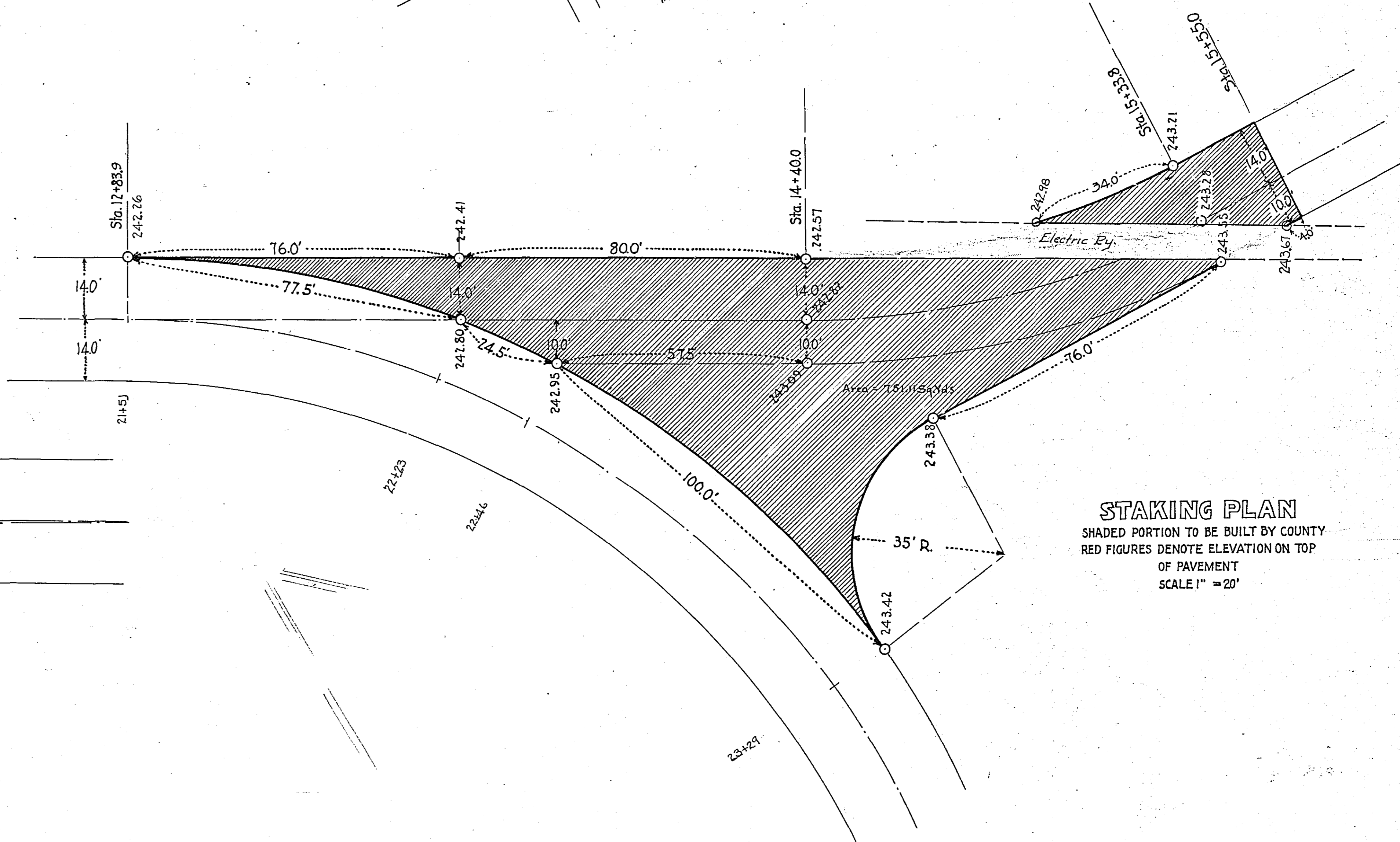
SKETCH
OF
LOCATION OF WHITE BEAR ROAD
WITH
PROPOSED LOCATION
AND
PRESENT LOCATION OF STREET RAILWAY TRACKS
BETWEEN
GOOSE LAKE AND WHITE BEAR LAKE
Scale 1"=100'
April 16, 1923



PLAN SHOWING INTERSECTIONS & EXCEPTION
SCALE 1" = 50'

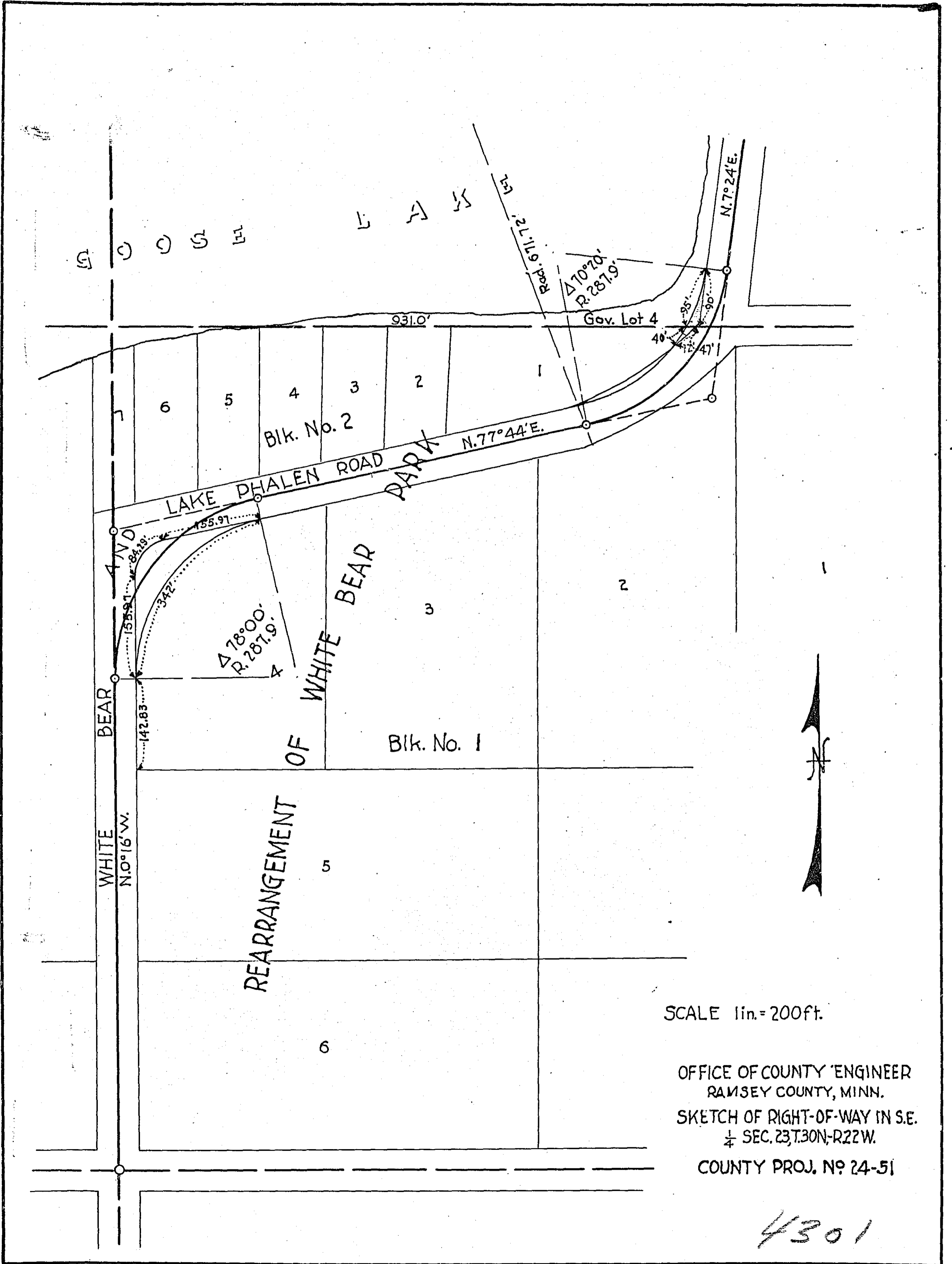


STAKING PLAN
SHADED PORTION TO BE BUILT BY THE COUNTY. RED FIGURES DENOTE ELEV. ON TOP OF PAVEMENT.
SCALE 1" = 20'



STAKING PLAN
SHADED PORTION TO BE BUILT BY COUNTY. RED FIGURES DENOTE ELEVATION ON TOP OF PAVEMENT.
SCALE 1" = 20'

DETAILS OF EXCEPTION & INTERSECTIONS WITH STATE TRUNK HIGHWAY NO. 1



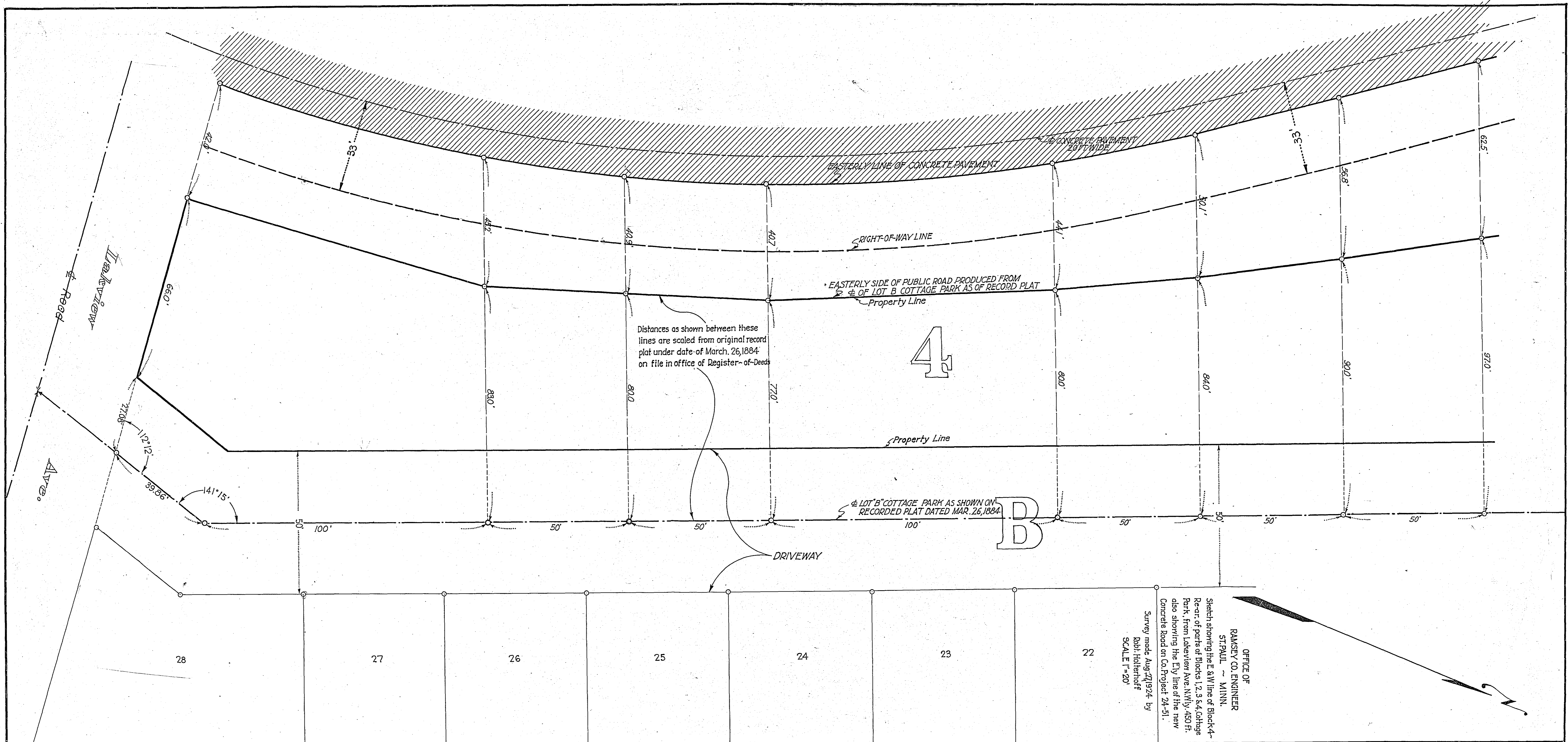
SCALE 1 in. = 200 ft.

OFFICE OF COUNTY ENGINEER
RAMSEY COUNTY, MINN.

SKETCH OF RIGHT-OF-WAY IN S.E.
¼ SEC. 23, T.30N., R.22W.

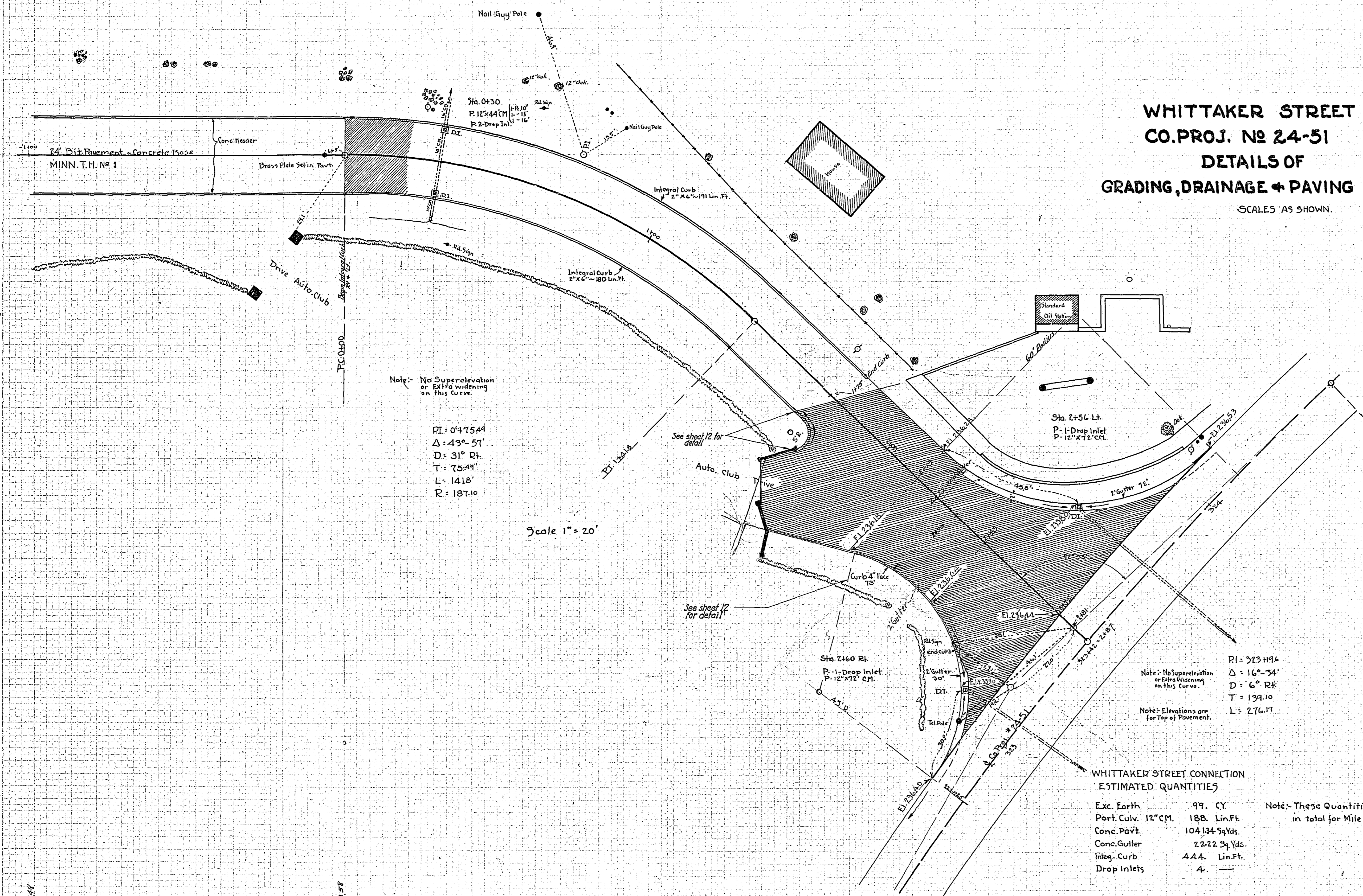
COUNTY PROJ. NO 24-51

4301



24-51

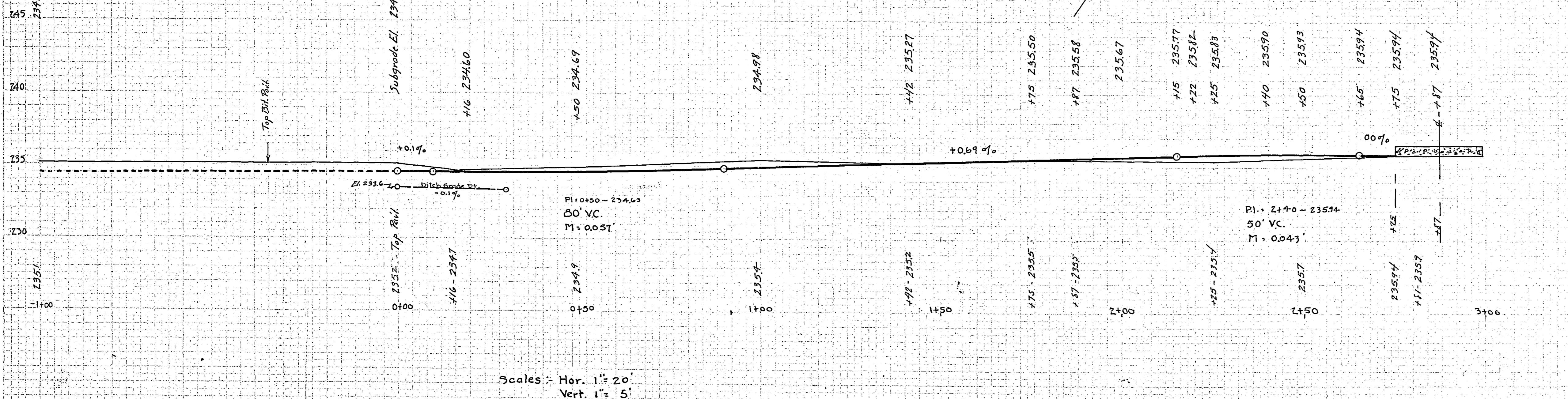
**WHITTAKER STREET
 CO. PROJ. NO 24-51
 DETAILS OF
 GRADING, DRAINAGE & PAVING**
 SCALES AS SHOWN.



**WHITTAKER STREET CONNECTION
 ESTIMATED QUANTITIES**

Exc. Earth	99. CY
Part. Culv. 12" CM.	188. Lin. Ft.
Conc. Pavt.	104,134 Sq. Yds.
Conc. Gutter	2,222 Sq. Yds.
Integ. Curb	444. Lin. Ft.
Drop Inlets	4.

Note: These Quantities included in total for Mile One.



2481	235.4	99	2.0
2450	236.1	4	8
2425	235.4	2	16
1487	235.5	4	15
1475	235.5	2	7
1442	235.2	5	21
1400	235.4	7	17
0+50	234.4	13	7
0+16	234.7	13	1
0+00	235.2	10	0
-1+00	235.1	31	0
-2+00	234.2		

Scale 1" = 10'