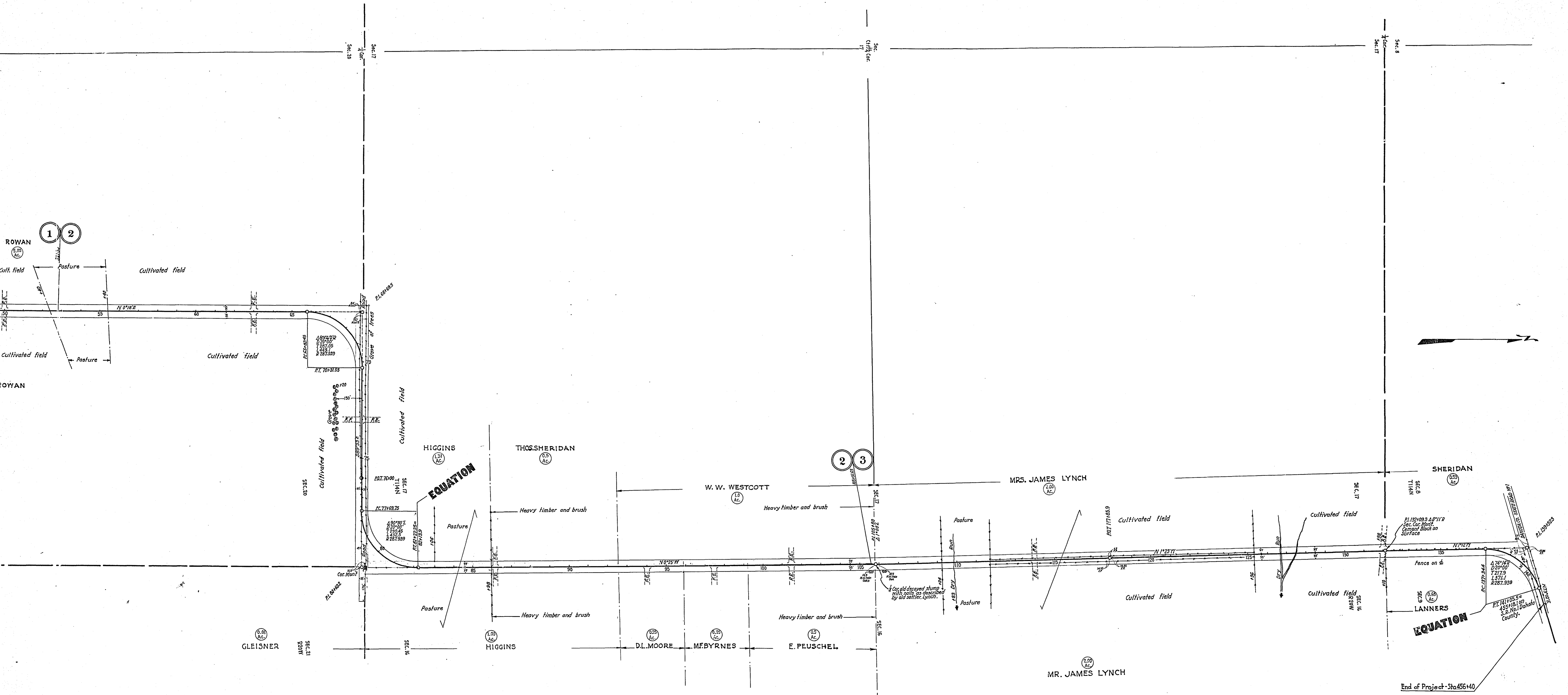


RAMSEY COUNTY ENGINEER'S OFFICE
 RIGHT-OF-WAY MAP
 RAMSEY COUNTY PROJ. 24-02 (DAKOTA COUNTY PROJ. 24-01)
 LAKEVILLE CONNECTION
 FROM LAKEVILLE TO ROSEMOUNT.
 S.R. No. 1 IN DAKOTA COUNTY
 Scale 1" = 200'

MICROFILMED
 RAMSEY CO. ENGR.

GLEISNER



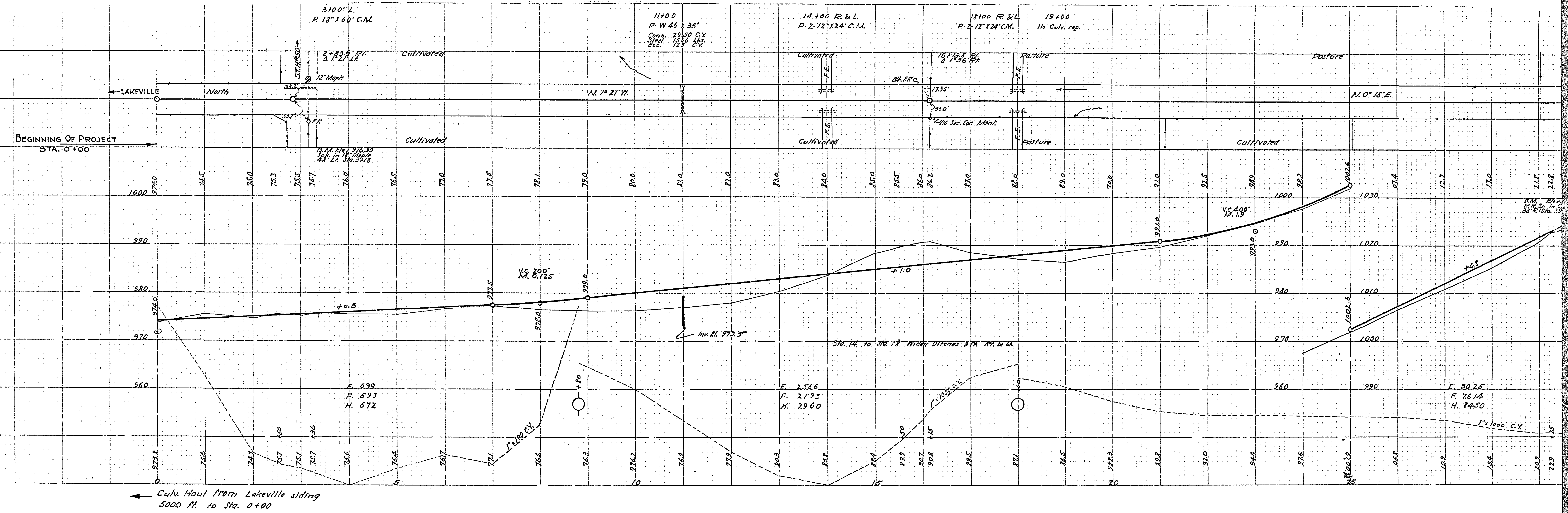
End of Project - Sta 456+40

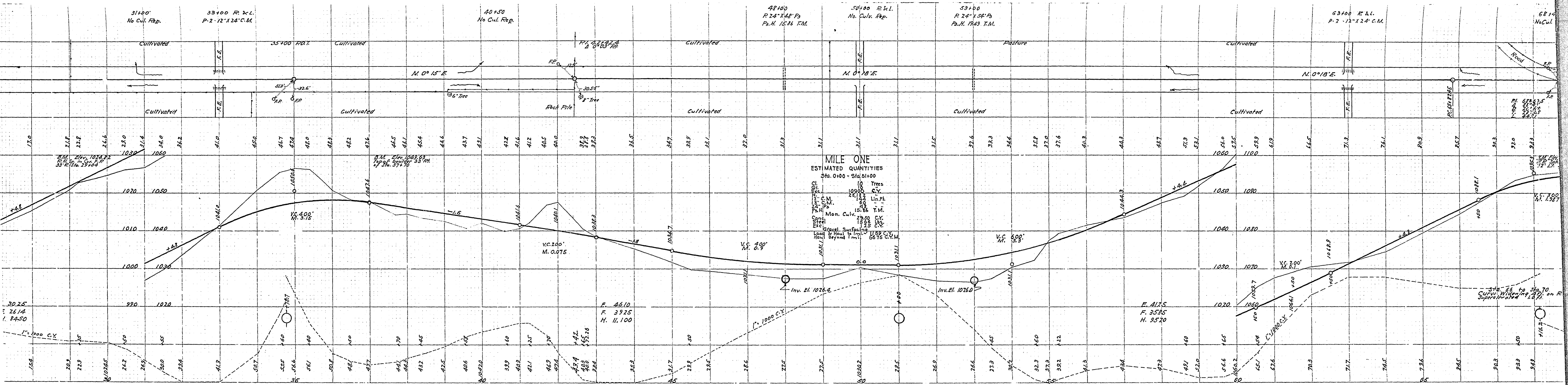
(24-01)(24-02)

MICROFILMED
RAMSEY CO. ENGR.

**Y COUNTY ENGINEER'S OFFICE
CONSTRUCTION PROFILE
Co. Proj 24-02 Dakota Co. Proj 24-01
LAKEVILLE CONNECTION**

MICROFILMED
RAMSEY CO. ENGR.





D.M. Elev. 1024.82
 F.P. Sp. in Cor. F.P.
 33° 15' 29" 29+04

D.M. Elev. 1049.63
 Top of Boulder 33' R.P.
 of Sta. 37+70

MILE ONE
 ESTIMATED QUANTITIES
 Sta. 0+00 - Sta. 5+00

10	Trees
10900	C.Y.
2312	Lin. Ft.
600	Mon. Culv.
1586	T.M.
2850	C.Y.
1550	C.Y.
125	C.Y.
1159	C.Y.
6676	C.Y.M.

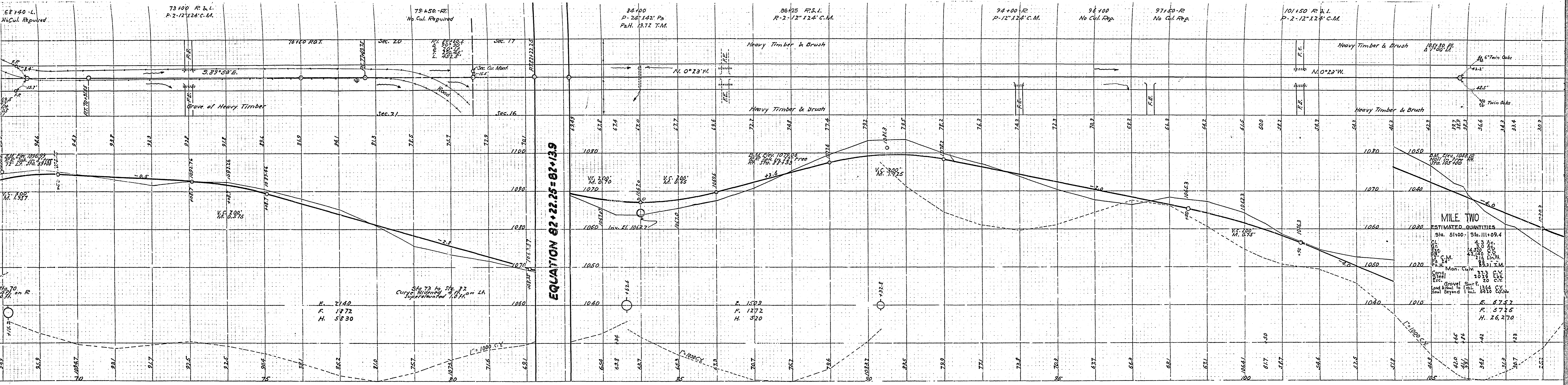
Gravel Surfacing
 Load & Haul Beyond

F. 4610
 F. 3925
 H. 11,100

F. 4175
 F. 3585
 H. 9520

Sta. 66 to Sta. 70
 Curve Widening 20' on R.
 Super-elevated 1.0 ft.

1/2" = 100' V.C.
 1/2" = 20' H.



68+40 - L.
No Cul. Required.

73+00 R & L.
P-2-12" X 24" C.M.

79+50 - R.
No Cul. Required

84+00
P-22" X 42" P.
Pa.H. 19.72 T.M.

86+25 R & L.
P-2-12" X 24" C.M.

94+00 - R.
P-12" X 24" C.M.

96+00
No Cul. Req.

97+50 - R.
No Cul. Req.

101+50 R & L.
P-2-12" X 24" C.M.

105+80 P.
P-12" X 24" C.M.

EQUATION 82+22.25 = 82+13.9

F. 2140
F. 1972
H. 5830

Sta. 73 to Sta. 82
Curve Widened 4 ft. on R.
Super-elevated 1.0 ft.

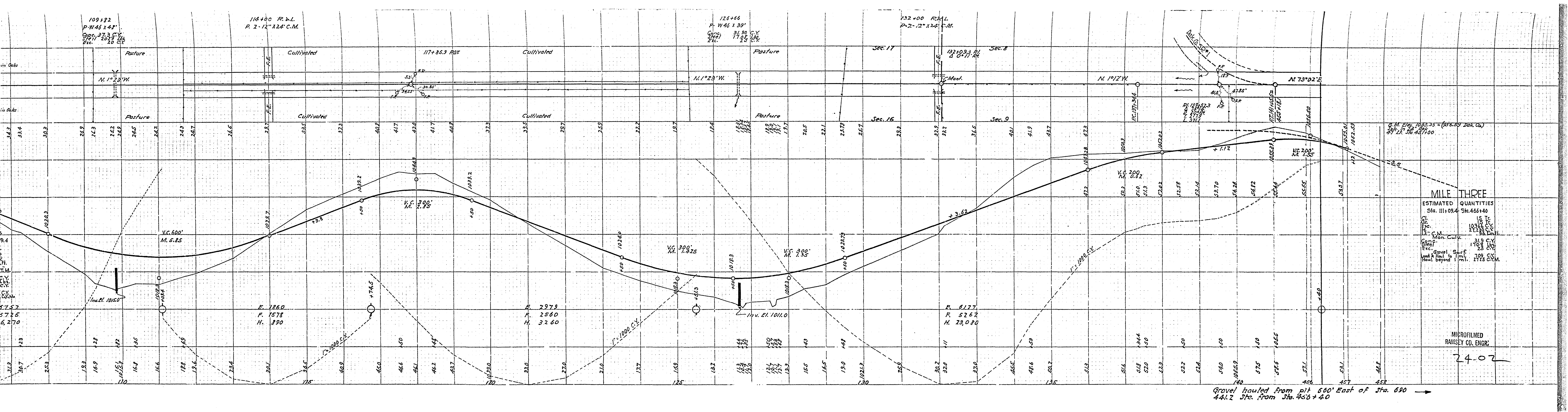
F. 1503
F. 1272
H. 520

MILE TWO

ESTIMATED QUANTITIES

Sta. 51+00	Sta. 111+09.4
Cl. 4.3	Ac.
Exc. 4.3	Ac.
Gravel 2.16	Lin. Ft.
Surf. 2.16	Lin. Ft.
Load Haul to 1 mi. Beyond	1364
	8420
	CY
	CY
	CY

F. 6757
F. 5725
H. 26,270



109+82
P-W 46 x 48'
Conc. 37.3 C.Y.
Steel 2029 lbs
Exc. 20 C.Y.

114+00 R.R.L.
P. 2-12" x 24' C.M.

126+66
P-W 46 x 39'
Conc. 31.90 C.Y.
Steel 1768 lbs
Exc. 25 C.Y.

132+00 R.R.L.
P-2-12" x 24' C.M.

132+09.3 R.L.
D 0-17' R.L.

B.M. Elev. 1063.33 = (556.39 Dak. Co.)
274' x 56' 45" x 100'

MILE THREE

ESTIMATED QUANTITIES	
Sta. 111+09.4	Sta. 145+40
Cl. Tr.	15 Tr.
Exc.	10360 C.Y.
Exc. C.M.	21230 C.Y.
Exc. C.M.	36 C.Y.
Mon. Culv.	31.9 C.Y.
Gravel Surf.	1708 lbs
Exc.	23 C.Y.
Lead & Haul to 1 mi.	709 C.Y.
Haul beyond 1 mi.	2725 C.Y.M.

MICROFILMED
RAMSEY CO. ENGR.

2402

Gravel hauled from pit 600' East of Sta. 690
441.2 Sta. from Sta. 456+40 →