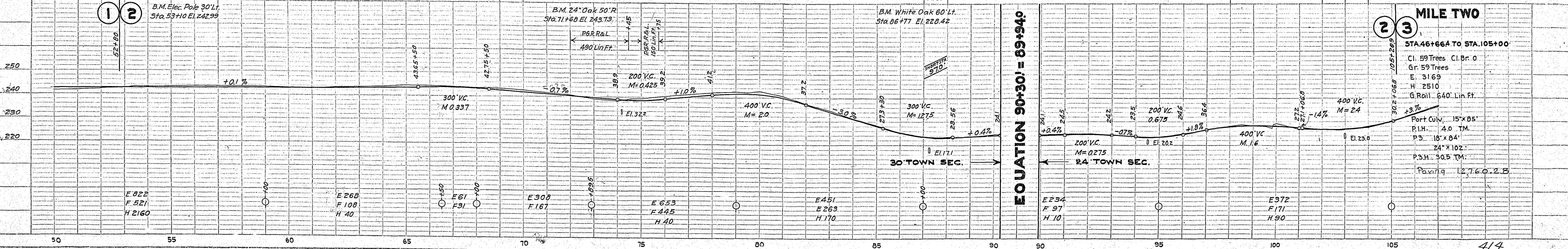
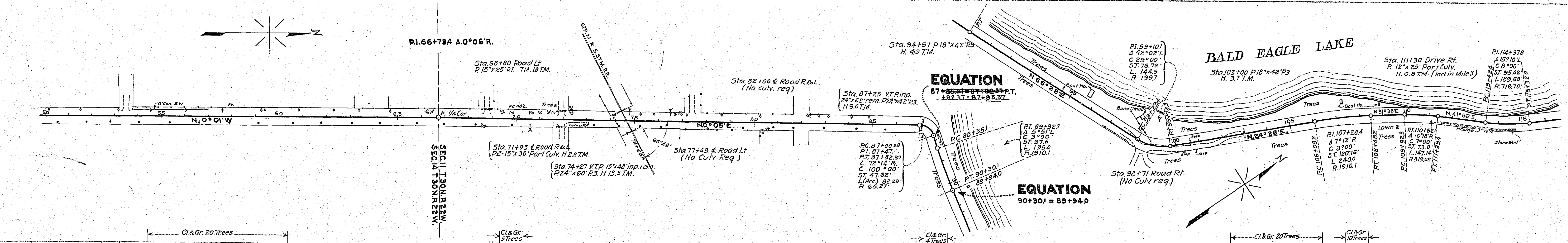


**MILE ONE**  
 STA. 0+00 TO STA. 46+66.4  
 Cl. 0 Cl.Br. 0  
 Gr. 0  
 E. 2311  
 H. 3530  
 Pav. Port Culv. 15'x40' VTP



**MILE TWO**  
 STA. 46+66.4 TO STA. 105+00  
 Cl. 59 Trees Cl.Br. 0  
 Gr. 59 Trees  
 E. 3169  
 H. 2510  
 G. Rail. 640' Lin. Ft.  
 Port Culv. 15'x05'  
 P.L.H. 4.0 TM.  
 P3. 18'x04'  
 24'x102'  
 P3.H. 30.5 TM.  
 Pav. 12.760.25

**PLAN**  
 SURVEYED  
 PLOTTED  
 CHECKED  
 DATE  
 BY  
 NO.

**PROFILE**  
 SURVEYED  
 PLOTTED  
 CHECKED  
 DATE  
 BY  
 NO.







CONVENTIONAL SIGNS & ABBREVIATIONS

STATE LINE	EXCAVATION	E
COUNTY LINE	EMBANKMENT	F
TOWNSHIP LINE	OVERHAUL	H
SECTION LINE	SURFACING	S
CITY, VILLAGE, OR BOROUGH	GUARD RAIL	GR
FENCE LINE	INTERSECTION ANGLE	A
RIGHT-OF-WAY LINE	RADIUS	R
TRAVELLED WAY	ELEVATION	EI
RAILROADS	VERTICAL CURVE	VC
RETAINING WALL	BENCH MARK	B.M.
BASE OR SURVEY LINE	SECTIONAL CONCRETE CULVERT	P.C.
LEVEE	CORRUGATED METAL CULVERT	C.M.
GRAVEL PIT	CULVERT HAUL	P.H.
SAND PIT	TON MILES	T.M.
CLAY PIT	IN PLACE	P
ROCK QUARRY	IN PLACE	INP.
CULVERTS	REPLACE	Rep.
PLAIN	RIGHT	R
WITH FACEWALLS	LEFT	L
WITH WINGWALLS	HAND DITCHING	H.D.
DROP INLET	POINT OF CURVE	P.C.
POWER POLE LINE	POINT OF TANGENT	P.T.
TELEPHONE OR TELEGRAPH LINE	POINT OF INTERSECTION	P.I.
MARSH	SPECIAL EXCAVATION	S.E.
HEDGE, BRUSH, OR TIMBER	SPECIAL FLOWING	S.F.
GROUND ELEVATION	TELEPHONE POLE	TEL.P.
GRADE ELEVATION		

OFFICE OF COUNTY ENGINEER

RAMSEY COUNTY

Plan and Profile of County Project No. 23-57

From A.P. 13241 So. & 2904 W. of N. 1/4 Cor. Sec. 23 T.30N. R.22W. To A.P. 345.86 So. & 1226.24 W. of N. 1/4 Cor. Sec. 12 T.30N. R.22 W.

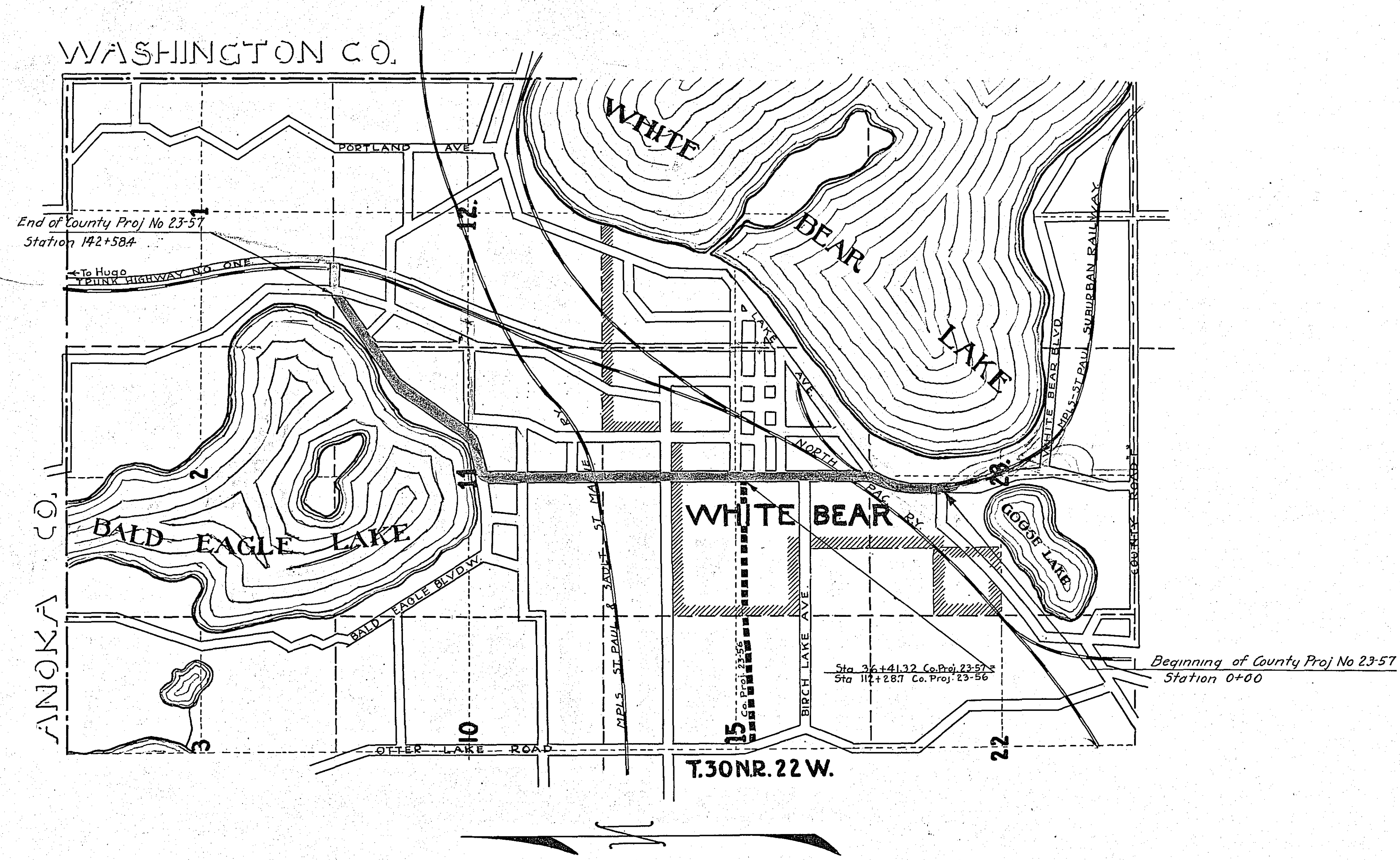
GROSS LENGTH 14,225.5 FEET 2.694 MILES  
 LENGTH OF EXCEPTIONS 0 FEET 0 MILES  
 NET LENGTH 14,225.5 FEET 2.694 MILES  
 PLAN, 1 Inch = 200 Feet  
 PROFILE, Horz. 1 Inch = 200 Feet. Vert. 1 Inch = 20 Feet  
 WORKING PLANS { Horz. 1 Inch = 100 Feet  
 Vert. 1 Inch = 10 Feet  
 Cross-Sections, 1 Inch = 10 Feet

LAYOUT

SCALE, 1 Inch = 1760 Feet

INDEX OF SHEETS

Sheet No. 1.	Title Sheet and Layout Map
" No. 2.	Typical Cross-Sections and Statement
" No. 3.	Plan and Profile, Sta. 0+00 to Sta. 105+00
" No. 4.	105+00 " " 142+58.4
" 5-7	Cross Sections.
" 8	Detail of Curve Widening, Sta 14+87.95
" 9	" " " Sta 87+47.7



Date of Resolution for preparation of plans \_\_\_\_\_ 19\_\_

Planned by \_\_\_\_\_ DESIGNING HIGHWAY ENGINEER

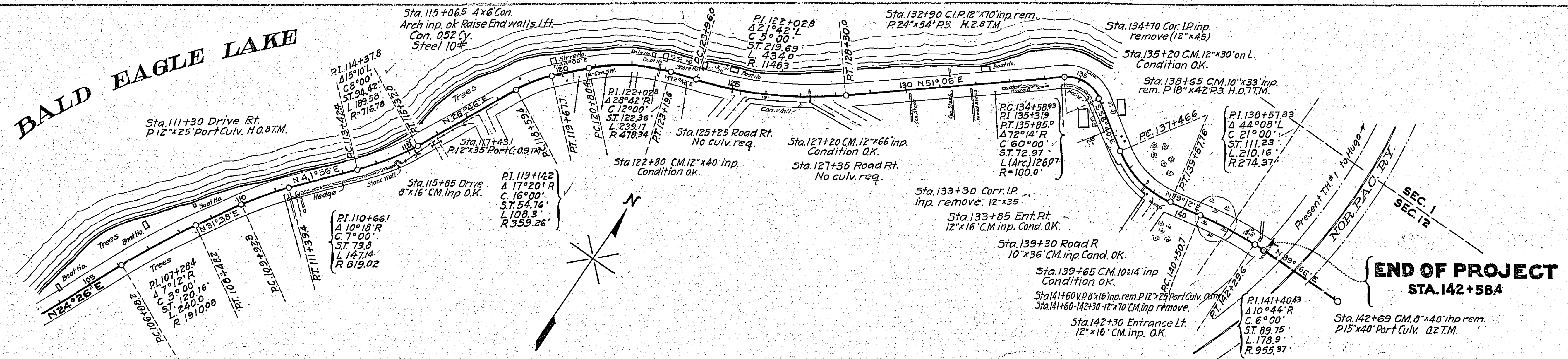
Recommended for approval \_\_\_\_\_ CONSTRUCTION ENGINEER

Plans Approved and Recommended for consideration \_\_\_\_\_ COUNTY ENGINEER

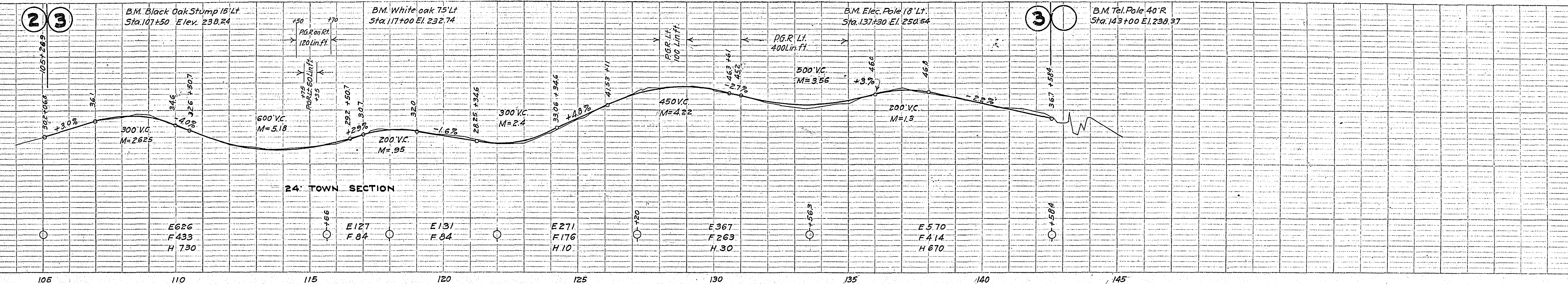
Approved by County Board \_\_\_\_\_ CHAIRMAN OF COUNTY BOARD



# BALD EAGLE LAKE



PLAN  
 SURVEYED BY: \_\_\_\_\_ DATE: \_\_\_\_\_  
 PLOTTED BY: \_\_\_\_\_  
 NOTE BOOK NO. \_\_\_\_\_  
 ALIGNED CHECKED BY: \_\_\_\_\_  
 GRADES CHECKED BY: \_\_\_\_\_  
 STRUCTURE NOTATIONS CH. AD.



**MILE THREE**  
 STA. 105+00 TO STA. 142+58.4

Cl. 0	GR. 0
Cl. Br. 0	
E. 2092	
H. 1440	
Guard Rail 680 Lin Ft.	
Tile	
Port Culv. 12' x 8.5' 15' x 4.0'	
P.I.H. 2.0 T.M.	
P.S. 16' x 4.5' 24' x 5.4'	
P3.H. 3.5 T.M.	
Con. 52 Cy.	
Steel 10 #	
Rem. 12' x 150 Ft.	
Paving 1815.73 Sq Yds.	

PROFILE  
 SURVEYED BY: \_\_\_\_\_ DATE: \_\_\_\_\_  
 PLOTTED BY: \_\_\_\_\_  
 NOTE BOOK NO. \_\_\_\_\_  
 GRADES CHECKED BY: \_\_\_\_\_  
 STRUCTURE NOTATIONS CH. AD.