

CONVENTIONAL SIGNS & ABBREVIATIONS

STATE LINE.....	EXCAVATION.....	F
COUNTY LINE.....	EMBANKMENT.....	H
TOWNSHIP LINE.....	OVERHAUL.....	H
SECTION LINE.....	SURFACING.....	S
CITY, VILLAGE, OR BOROUGH.....	GUARD RAIL.....	GR
FENCE LINE.....	INTERSECTION ANGLE.....	A
RIGHT-OF-WAY LINE.....	RADIUS.....	R
TRAVELLED WAY.....	ELEVATION.....	EL
RAILROADS.....	VERTICAL CURVE.....	V.C.
RETAINING WALL.....	BECKH MARK.....	B.M.
BASE OR SURVEY LINE.....	SECTIONAL CONCRETE CULVERT.....	P.1
LEVEE.....	CORRUGATED METAL CULVERT.....	C.M.
GRAVEL PIT.....	CULVERT HAUL.....	P.H.
SAND PIT.....	TON MILES.....	T.M.
CLAY PIT.....	PLACE.....	P
ROCK QUARRY.....	IN PLACE.....	Imp.
CULVERTS.....	REPLACE.....	Rep.
PLAIN.....	RIGHT.....	R
WITH FACEWALLS.....	LEFT.....	L
WITH WINGWALLS.....	HAND DITCHING.....	H.D.
DROP INLET.....	POINT OF CURVE.....	P.C.
POWER POLE LINE.....	POINT OF TANGENT.....	P.T.
TELEPHONE OR TELEGRAPH LINE.....	POINT OF INTERSECTION.....	P.I.
MARSH.....	SPECIAL EXCAVATION.....	S.E.
EDGE, BRUSH, OR TIMBER.....	SPECIAL PLOWING.....	S.P.
GROUND ELEVATION.....	TELEPHONE POLE.....	Tel.P.

STATE HIGHWAY DEPARTMENT
OF MINNESOTA

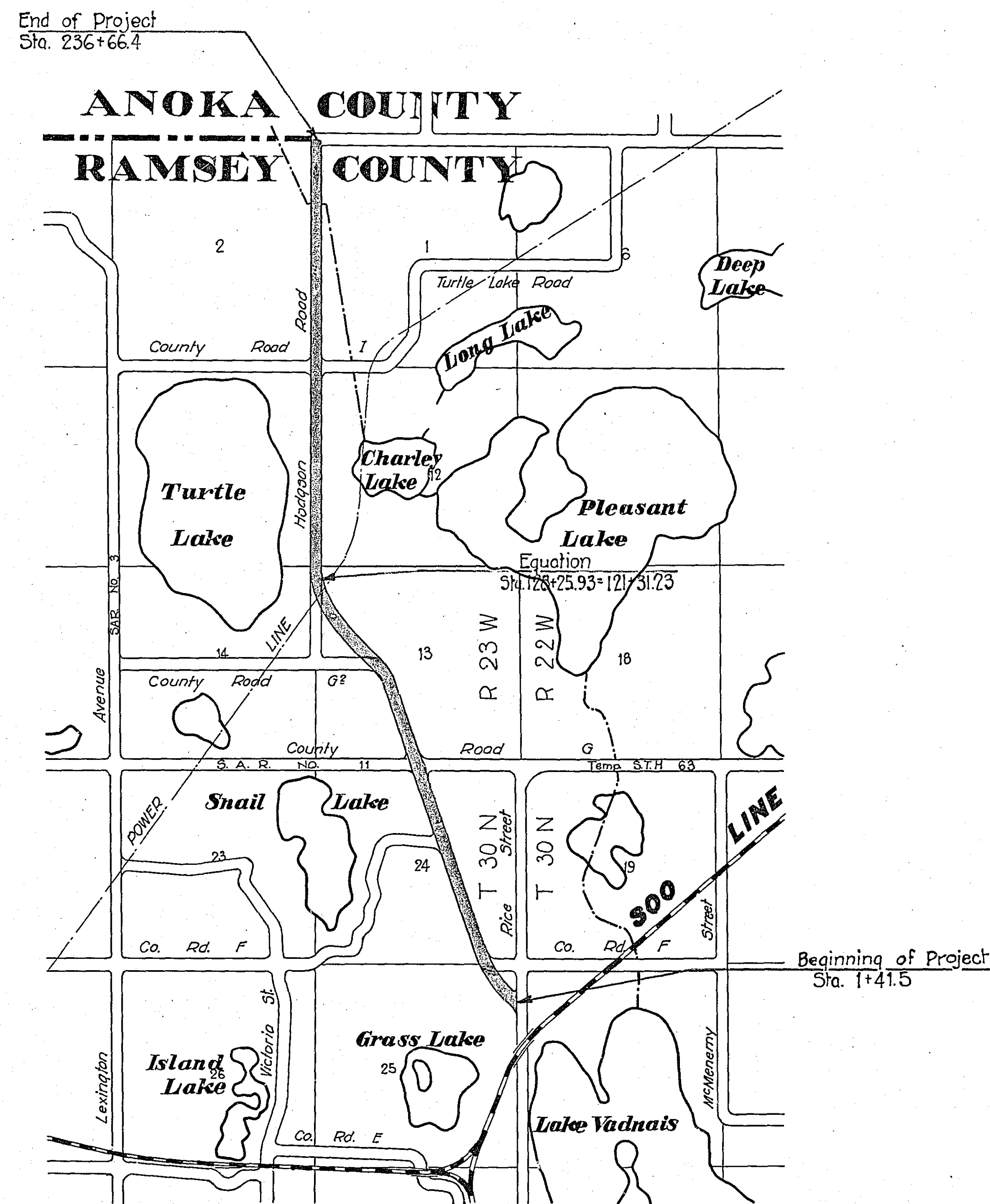
Plan and Profile of State Road No. 1

COUNTY OF **RAMSEY**
a point 1130.0 Ft. So. & 120 Ft. W. of
From N.E. Cor. Sec. 25 T.30N. R.23W. To N.W. Cor. Sec. 1 T.30N. R.23W.
Give proper reference to Sections, Township and Range

GROSS LENGTH 24,219.6 FEET 4.587 MILES
LENGTH OF EXCEPTIONS FEET MILES
NET LENGTH 24,219.6 FEET 4.587 MILES
PLAN, 1 Inch = 200 Feet
PROFILE, Horiz. 1 Inch = 200 Feet. Vert. 1 Inch = 20 Feet
WORKING PLANS Horiz. 1 Inch = 100 Feet
Vert. 1 Inch = 10 Feet
Cross-Sections, 1 Inch = 10 Feet
LAYOUT
SCALE, 1 Inch = 2640. Feet

INDEX OF SHEETS

Sheet No. 1.	Title Sheet and Layout Map
" No. 2.	Typical Cross-Sections and Statement
" No. 3.	Plan and Profile, Sta. 1+41.5 to Sta. 107+24
" No. 4.	107+24 206+00
" No. 5.	206+00 236+66.4
" No. 6.	to 10 (incl) Cross Sections
" No. 7.	
" No. 8.	

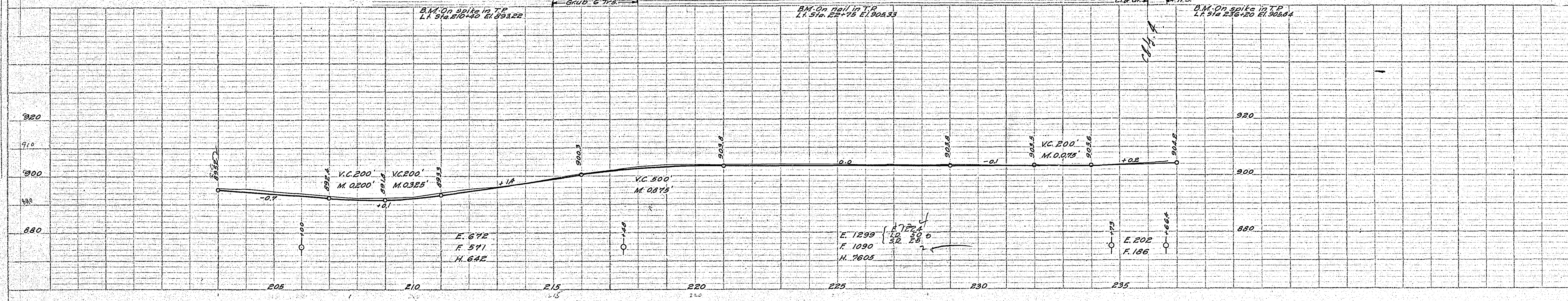
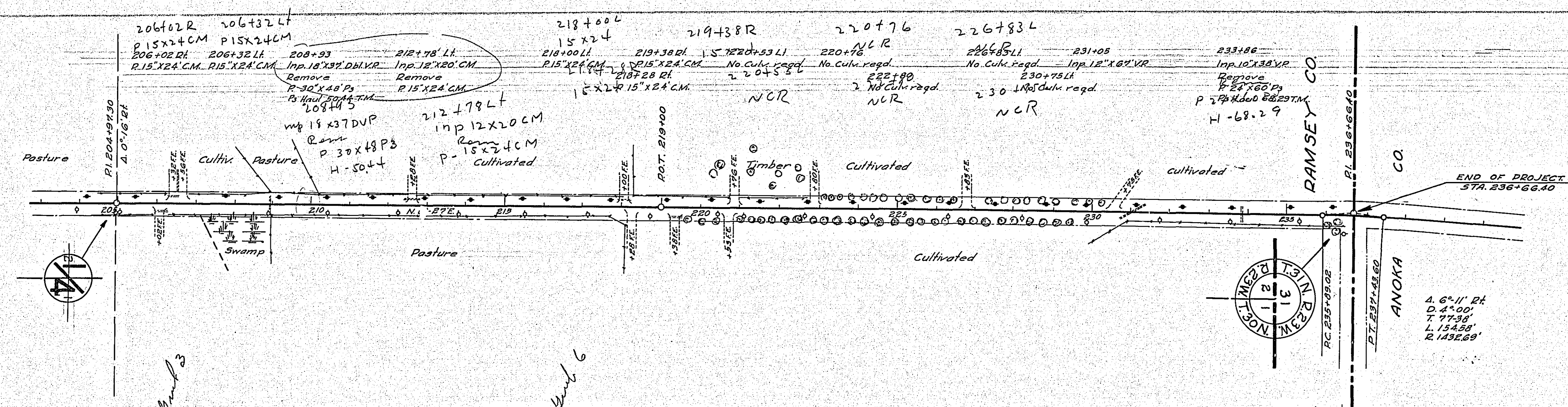


PLAN
27-131
INDEX

Planned by _____
HIGHWAY ENGINEER FOR _____ COUNTY.
Recommended for Approval _____ DIVISION ENGINEER
Recommended for Approval _____ CONSTRUCTION ENGINEER
Approved _____ 192 CHIEF ENGINEER & DEPUTY COMMISSIONER

PLAN SURVEYED BY DATE
 NOTE BOOK ALIGNMENT CHECKED
 RT. OF WAY CHECKER
 P.S.

PROFILE SURVEYED BY DATE
 NOTE BOOK ADJUSTED
 DATE LOCAL & STATE
 NO. STRUCTURE NOTATION CHAS

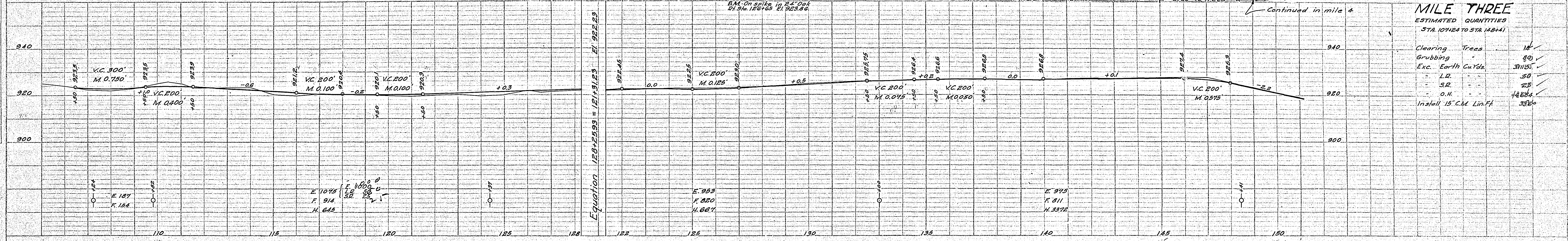
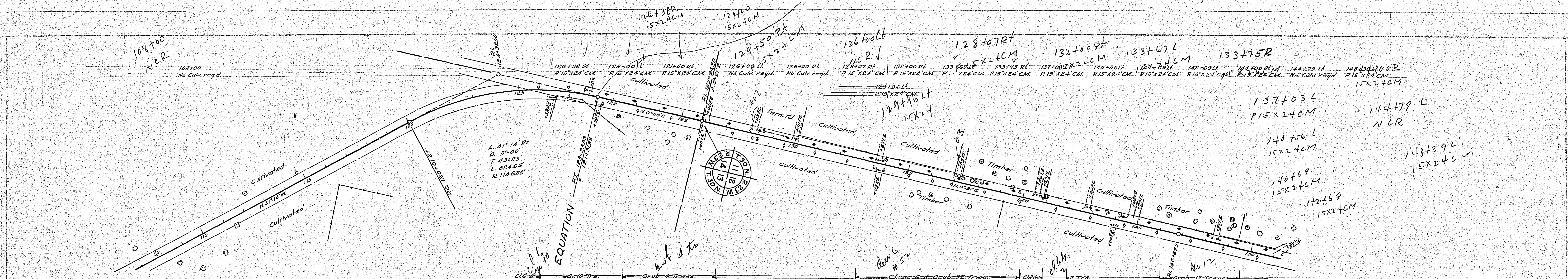


MILE FIVE
 ESTIMATED QUANTITIES
 STA. 206+00 TO STA. 230+66.40

Clearing Trees	10
Grubbing	10
Exc. Earth Cu Yds	2098
" 12	50
" 30	25
" 48	2247
Install 18" CM. Lin. P.	144
" 24" P.	60
" 30" P.	152
P3 Culvert Haul TM	118.73
Remove old Culvert Lin. P.	1322

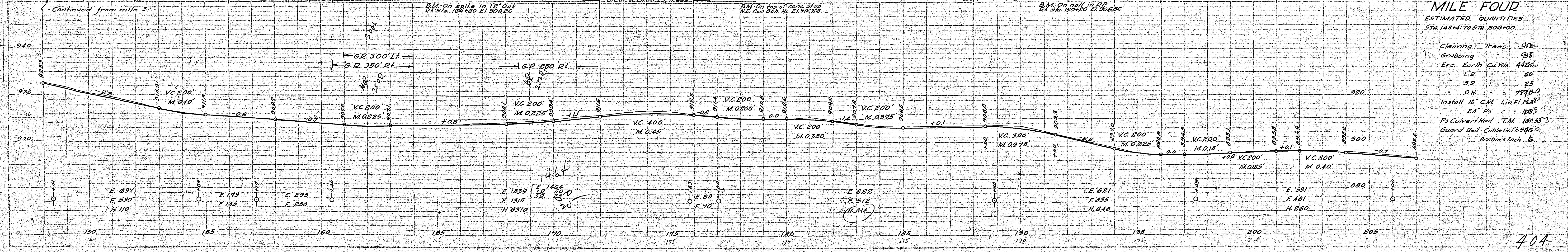
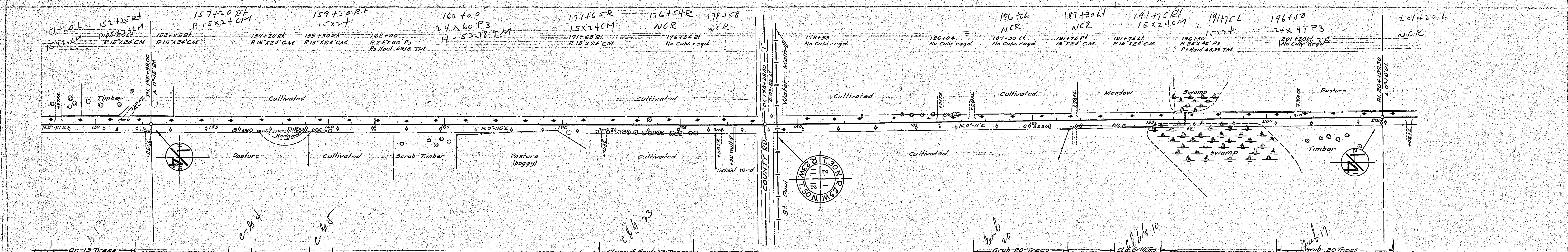
PLAN	SURVEYED	BY	DATE
	NOTED		
	BOOK		
	ALIGNED		
	CHECKED		
	BY		
	DATE		

PROFILE	SURVEYED	BY	DATE
	NOTED		
	BOOK		
	ALIGNED		
	CHECKED		
	BY		
	DATE		



MILE THREE
ESTIMATED QUANTITIES
STA 108+00 TO STA 148+00

Clearing Trees	18
Grubbing	90
Exc. Earth Cu Yds.	3915
L.R.	50
S.R.	25
O.H.	14864
Install 15' C.M. Lin.Ft.	3360

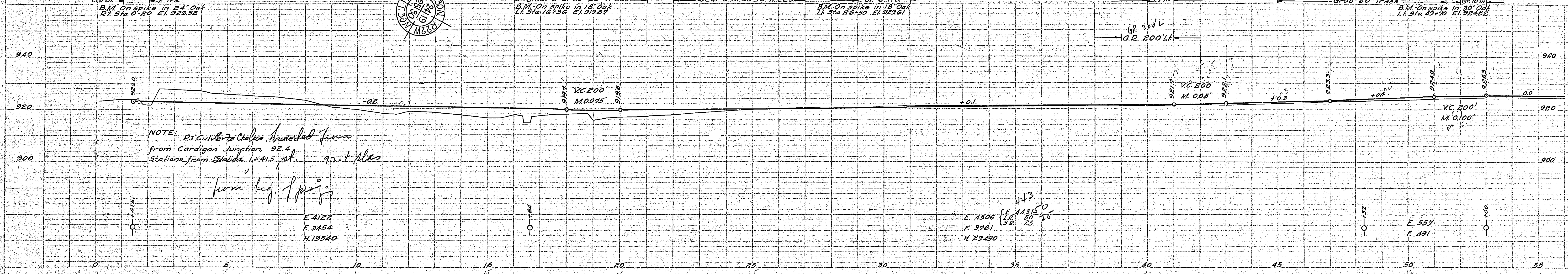
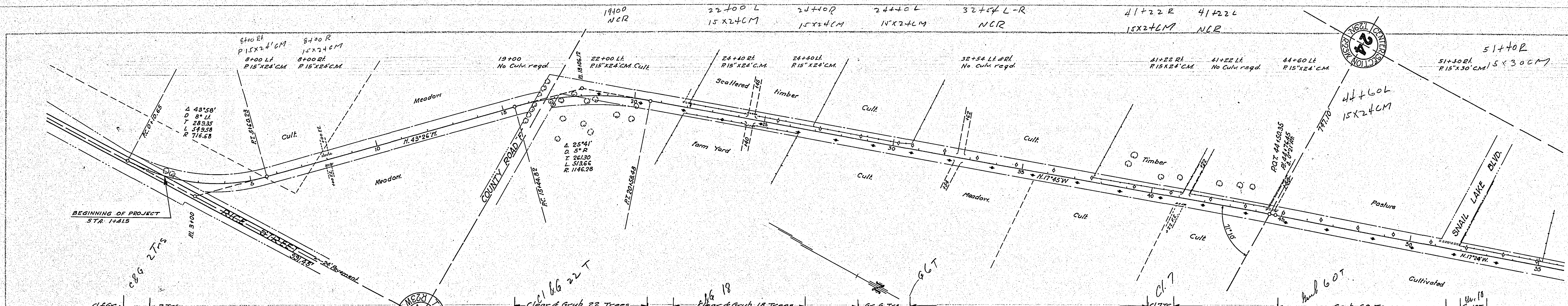


MILE FOUR
ESTIMATED QUANTITIES
STA 151+20 TO STA 201+00

Clearing Trees	18
Grubbing	90
Exc. Earth Cu Yds.	4126
L.R.	50
S.R.	25
O.H.	17740
Install 15' C.M. Lin.Ft.	1083
Ps Culver-Houl T.M.	10153
Guard Rail Cable Lin.Ft.	9000
Anchors Each	6

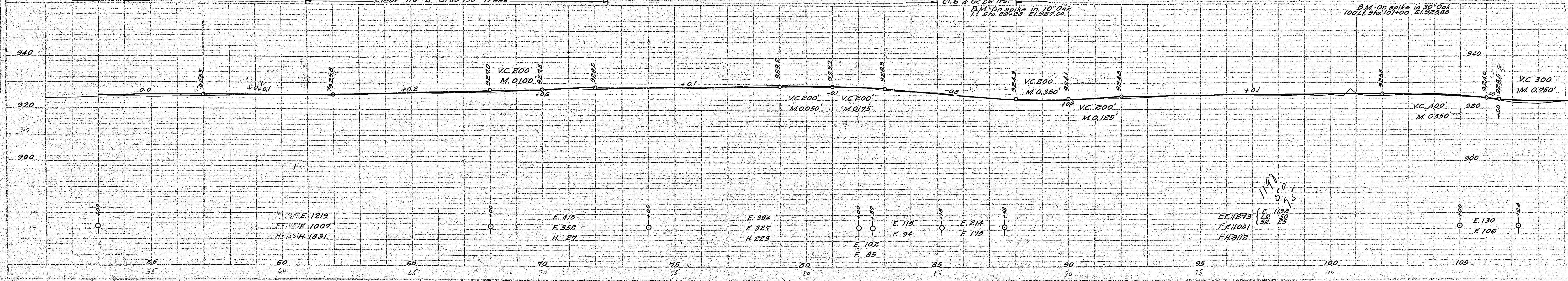
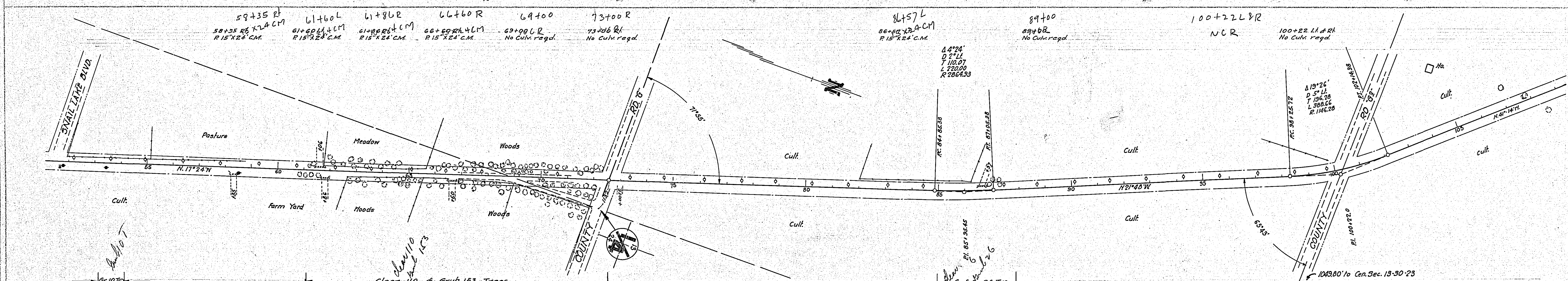
DATE	
BY	
PROJECT	
DESIGNED BY	
CHECKED BY	
IN CHARGE	
NOTED	
APPROVED	
DATE	

DATE	
BY	
PROJECT	
DESIGNED BY	
CHECKED BY	
IN CHARGE	
NOTED	
APPROVED	
DATE	



MILE ONE
ESTIMATED QUANTITIES
STA. 1+01.5 TO STA. 51+00

Clearing Trees	49.49
Grubbing	118.18
Exc. Earth Cu. Yds.	9119.10
L.R.	50.50
S.R.	25.25
O.H.	49038.030
Install 15' C.M. Lin. Ft.	100.198
Guard Rail Cable	200.200
Anchors Each	2.2



MILE TWO
ESTIMATED QUANTITIES
STA. 59+00 TO STA. 101+24

Clearing Trees	116
Grubbing	189
Exc. Earth Cu. Yds.	3788.7
L.R.	50
S.R.	25
O.H.	51589.3
Install 15' C.M. Lin. Ft.	100