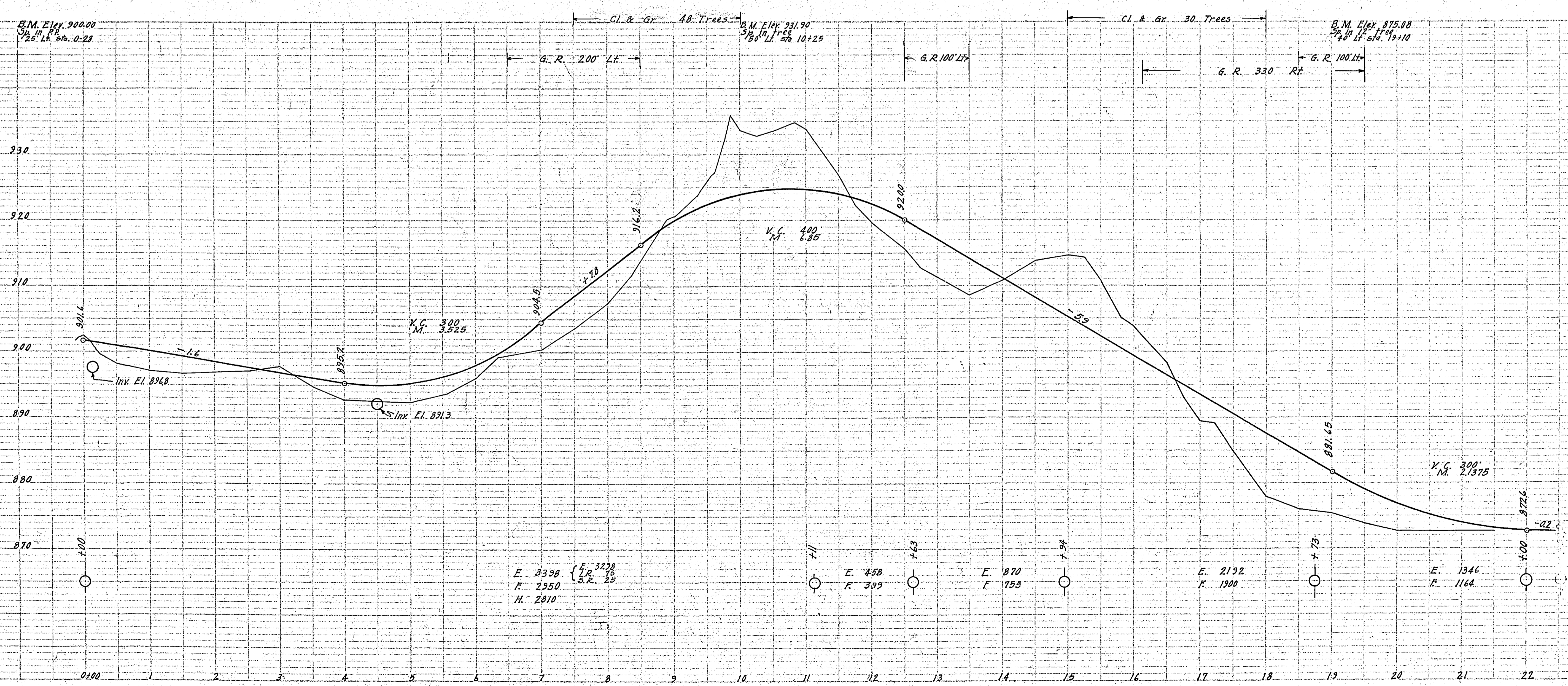
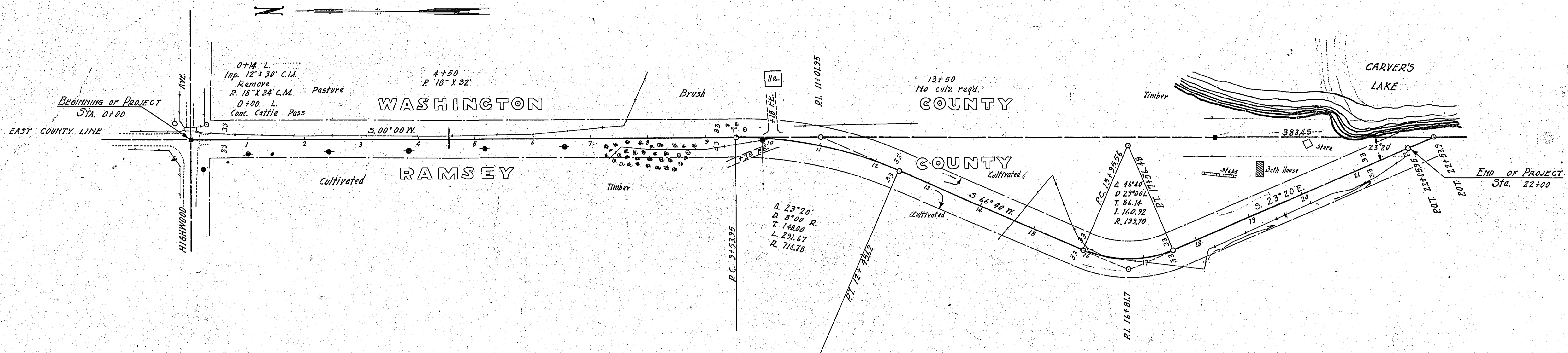


PLAN  
 SURVEYED  
 BY  
 DATE  
 NOTE BOOK EXAMINED CHECKED  
 BY  
 DATE  
 STRUCTURE POSITIONS CHECKED  
 BY  
 DATE

PROFILE  
 SURVEYED  
 BY  
 DATE  
 NOTE BOOK EXAMINED CHECKED  
 BY  
 DATE  
 STRUCTURE POSITIONS CHECKED  
 BY  
 DATE



ESTIMATED QUANTITIES  
 Sta. 0+00 to Sta. 22+00

Clearing	Trees	78
Grubbing		78
Excavation - Earth	C.Y.	814
- Loose Rock		25
- Solid		25
- Overhaul		2810
Install 18" C.M. Culverts	Lin. Ft.	66
Remove Old		30
Guard Rail Cable		1730
Anchor Blocks	Each	8



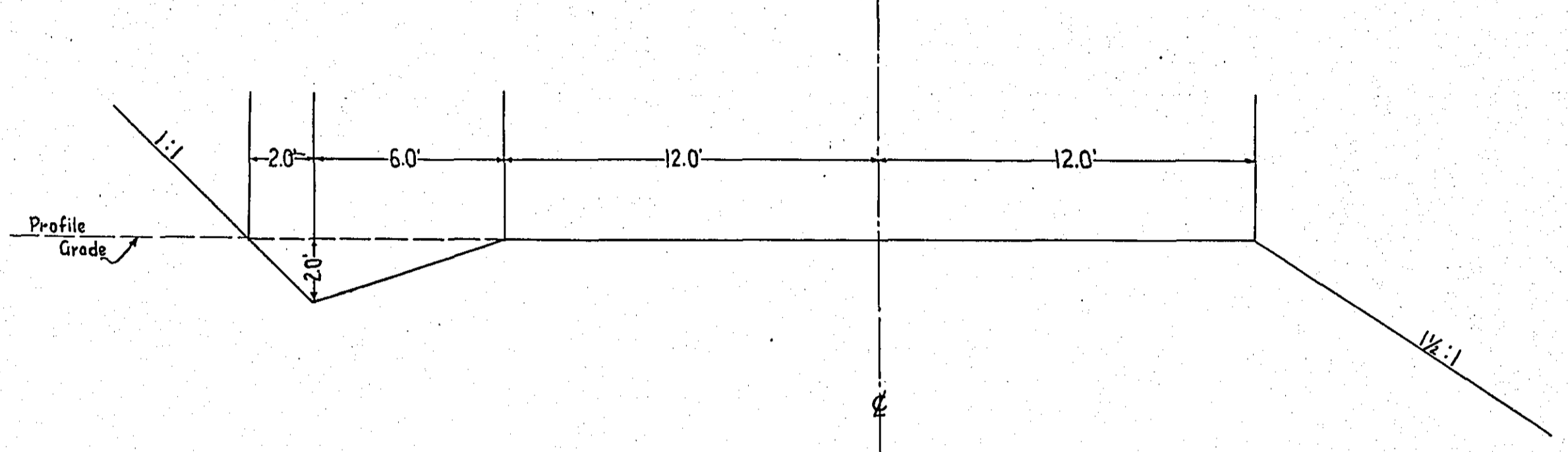
STATEMENT OF ESTIMATED QUANTITIES AND COSTS.

ITEM	UNIT	MILE	MILE	MILE	MILE	MILE	MILE	MILE	MILE	MILE	MILE	MILE	MILE	MILE	MILE	TOTAL ESTIMATED QUANTITIES	ESTIMATED UNIT PRICES	AMOUNTS	TOTALS
		Sta. 0+00 to Sta. 22+00	Sta. to Sta.	Sta. to Sta.	Sta. to Sta.	Sta. to Sta.	Sta. to Sta.	Sta. to Sta.	Sta. to Sta.	Sta. to Sta.	Sta. to Sta.	Sta. to Sta.	Sta. to Sta.	Sta. to Sta.	Sta. to Sta.				
1	Clearing	Acre																	
2	Clearing	Tree	78													78			
3	Grubbing	Acre																	
4	Grubbing	Tree	78													78			
5	Excavation - Earth	Cu. Yd.	8164													8164			
6	Excavation - Loose Rock	Cu. Yd.	75													75			
7	Excavation - Solid Rock	Cu. Yd.	25													25			
8	Excavation - Overhaul	Cu. Yd.	2610													2610			
9	Special Excavation	Lin. Ft.																	
10	Hand Ditching	Cu. Yd.																	
11	Tile Drain	in. Lin. Ft.																	
12	Tile Drain	in. Lin. Ft.																	
13	Tile Drain	in. Lin. Ft.																	
14	Porous Back Fill Material	Cu. Yd.																	
15	Stone Rip - Rap	Cu. Yd.																	
16	Gravel Rip - Rap or Stone Drain Material	Cu. Yd. mile																	
17	Install 18" C.M.	Lin. Ft.	66													66			
18	Install	Lin. Ft.																	
19	Install	Lin. Ft.																	
20	Install	Lin. Ft.																	
21	Install	Lin. Ft.																	
22	Install	Lin. Ft.																	
23	Install	Lin. Ft.																	
24	Install	Lin. Ft.																	
25	Install 24" P <sub>3</sub>	Lin. Ft.																	
26	Install 30" P <sub>3</sub>	Lin. Ft.																	
27	Install 36" P <sub>3</sub>	Lin. Ft.																	
28	P <sub>1</sub> Culvert Haul	Ton Mile																	
29	P <sub>3</sub> Culvert Haul	Ton Mile																	
30	Remove old Culverts	Lin. Ft.	30													30			
TOTAL ESTIMATED COST OF GRADING (IN 'TOTALS' COLUMN)																			\$3,072.67
33	Culv. Material	Lin. Ft.																	
34	C.M. Culv. Material 18"	Lin. Ft.	66													66			
35	Culv. Material	Lin. Ft.																	
36	Culv. Material	Lin. Ft.																	
37	Culv. Material	Lin. Ft.																	
38	Culv. Material	Lin. Ft.																	
39	P <sub>3</sub> Culv. Material 24"	Lin. Ft.																	
40	P <sub>3</sub> Culv. Material 30"	Lin. Ft.																	
41	P <sub>3</sub> Culv. Material 36"	Lin. Ft.																	
TOTAL ESTIMATED COST OF PORTABLE CULVERT MATERIAL (IN 'TOTALS' COLUMN)																			\$67.78
42	Gravel Pit Stripping	Cu. Yd.																	
43	Screening	Cu. Yd.																	
44	Loading	Cu. Yd.																	
45	Hauling	Cu. Yd. Mile																	
46	Shaping & Compacting	Man Hour																	
47	Shaping & Compacting	Man Hour																	
48																			
49																			
50																			
51																			
TOTAL ESTIMATED COST OF GRAVEL HAUL (IN 'TOTALS' COLUMN)																			
52	Gravel Material F. O. B. Pit	Cu. Yd.																	
53	Freight (If any)	Cu. Yd.																	
54	Unloading from Cars	Cu. Yd.																	
TOTAL ESTIMATED COST OF GRAVEL MATERIAL (IN 'TOTALS' COLUMN)																			
55	Fine Grading - Exc. & Emb.	Cu. Yd.																	
56	Shoulders - Earth	Cu. Yd.																	
57																			
58																			
59	Pavement	Sq. Yd.																	
60	Integral Curb	Lin. Ft.																	
61	Stopping Curb	Lin. Ft.																	
62	Surface Drain	Lin. Ft.																	
63	Surface Drain Basins	Basin																	
64	Bridge Approach Slabs (Sewer)	Slab																	
65	Bridge Approach Slabs (Sewer)	Slab																	
66																			
67																			
68																			
TOTAL ESTIMATED COST OF PAVEMENT CONSTRUCTION (IN 'TOTALS' COLUMN)																			
69	Concrete	Cu. Yd.																	
70	Reinforcing Steel	Lb.																	
71	Excavation - Earth	Cu. Yd.																	
72	Excavation - Loose Rock	Cu. Yd.																	
73	Excavation - Solid Rock	Cu. Yd.																	
74	Bridge	* Bridge No.	Br. No.	Br. No.	Br. No.	Br. No.	Br. No.	Br. No.	Br. No.	Br. No.	Br. No.	Br. No.	Br. No.	Br. No.	Br. No.	Br. No.	Br. No.	Br. No.	Br. No.
75	Station																		
76	Concrete	Cu. Yd.																	
77	Reinforcing Steel	Lb.																	
78	Structural Steel	Lb.																	
79	Piling	Lin. Ft.																	
80	Temporary Crossing	Lump Sum																	
81	Removing old Bridge	Lump Sum																	
82	Bituminous Surface	Sq. Yd.																	
83																			
84																			
TOTAL ESTIMATED COST OF STRUCTURES (IN 'TOTALS' COLUMN)																			
85	Guard Rail Cable	Lin. Ft.	730													730			
86	Gutter	Lin. Ft.																	
87	Guard rail Anchor Blocks	Each	8													8			
TOTAL ESTIMATED COST OF MISCELLANEOUS ITEMS (IN 'TOTALS' COLUMN)																			\$168.00
GRAND TOTAL COST																			\$3328.45

TYPICAL CROSS SECTIONS AND DETAILS

FED. ROAD DIST. NO.	STATE	FED. AID PROJ. NO.	SEC.	FISCAL YEAR	SHEET NO.	TOTAL SHEETS
4	MINN.					

GENERAL GRADING SECTION



\* NOTE: BRIDGE ITEMS LISTED UNDER BRIDGE NUMBERS IN MILE COLUMNS REGARDLESS OF LOCATION

CONVENTIONAL SIGNS & ABBREVIATIONS

STATE LINE	-----	EXCAVATION	-----	E
COUNTY LINE	-----	EMBANKMENT	-----	F
TOWNSHIP LINE	-----	OVERHAUL	-----	H
SECTION LINE	-----	SURFACING	-----	S
CITY, VILLAGE, OR BOROUGH	-----	GUARD RAIL	-----	GR
FENCE LINE	-----	INTERSECTION ANGLE	-----	Δ
RIGHT-OF-WAY LINE	-----	RADIUS	-----	R
TRAVELLED WAY	-----	ELEVATION	-----	EI
RAILROADS	-----	VERTICAL CURVE	-----	VC
RETAINING WALL	-----	BENCH MARK	-----	B.M.
BASE OR SURVEY LINE	-----	SECTIONAL CONCRETE CULVERT	-----	P.C.
LEVEE	-----	CORRUGATED METAL CULVERT	-----	C.M.
GRAVEL PIT	-----	CULVERT HAUL	-----	P.H.
SAND PIT	-----	TON MILES	-----	T.M.
CLAY PIT	-----	PLACE	-----	P
ROCK QUARRY	-----	IN PLACE	-----	Imp.
CULVERTS	-----	REPLACE	-----	Rep.
PLAIN	-----	RIGHT	-----	R
WITH FACEWALLS	-----	LEFT	-----	L
WITH WINGWALLS	-----	HAND DITCHING	-----	H.D.
DROP INLET	-----	POINT OF CURVE	-----	P.C.
POWER POLE LINE	-----	POINT OF TANGENT	-----	P.T.
TELEPHONE OR TELEGRAPH LINE	-----	POINT OF INTERSECTION	-----	P.I.
MARSH	-----	SPECIAL EXCAVATION	-----	S.E.
HEDGE, BRUSH, OR TIMBER	-----	SPECIAL FLOWING	-----	S.F.
GROUND ELEVATION	-----	TELEPHONE POLE	-----	Tel.P.
GRADE ELEVATION	-----			

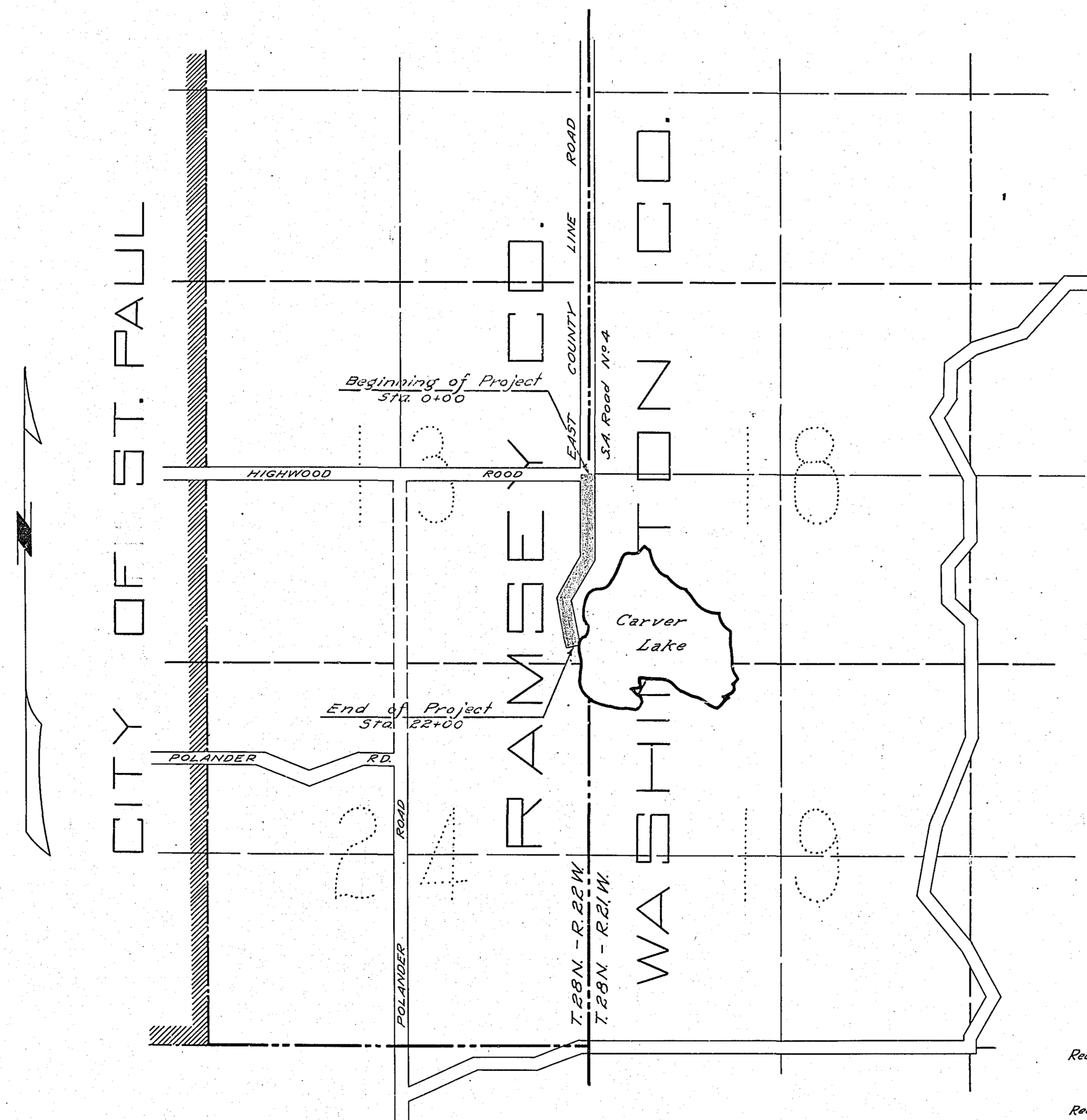
OFFICE OF COUNTY SURVEYOR  
RAMSEY COUNTY

Plan and Profile of County Project No. 26-06

From *E. 1/4 Sec. 13, T.28N., R.21W.* To a point 160' north of the S.E. Cor. Sec. 13-28-22  
Give proper reference to Sections, Township and Range

GROSS LENGTH 2200 FEET .42 MILES  
LENGTH OF EXCEPTIONS FEET MILES  
NET LENGTH 2200 FEET .42 MILES  
PLAN, 1 Inch = 100 Feet  
PROFILE, Horz. 1 Inch = 100 Feet. Vert. 1 Inch = 10 Feet  
SCALES WORKING PLANS { Horz. 1 Inch = 100 Feet  
Vert. 1 Inch = 10 Feet  
Cross-Sections, 1 Inch = 10 Feet  
LAYOUT  
SCALE, 1 Inch = 1320 Feet

INDEX OF SHEETS  
Sheet No. 1. Title Sheet and Layout Map  
" No. 2. Typical Cross-Sections and Statement  
" No. 3. Plan and Profile, Sta. 0+00 to Sta. 22+00.  
" No. 4, 5 Cross Sections



4/3/26  
"B" (26-06)

Date of Resolution for Preparation of Plans July 22 1925

Planned by *H.B. Van Hevelen*  
DESIGNING HIGHWAY ENGINEER

Recommended for Approval *J.P. Barua*  
DIVISION ENGINEER

Recommended for Approval *Percy R. Partridge*  
CONSTRUCTION ENGINEER

Recommended for Approval *H. Chapman*  
CONSTRUCTION ENGINEER

Plans Approved and Recommended for Consideration *A.J. Nordlund*  
COUNTY SURVEYOR

Approved Apr. 1, 1926 *J. O. Reiman*  
CHIEF ENGINEER

Approved by County Board 19  
CHAIRMAN OF COUNTY BOARD