

CONVENTIONAL SIGNS & ABBREVIATIONS

STATE LINE.....	EXCAVATION.....	F
COUNTY LINE.....	EMBANKMENT.....	F
TOWNSHIP LINE.....	OVERHAIL.....	H
SECTION LINE.....	SURFACING.....	S
CITY, VILLAGE, OR BOROUGH.....	GUARD RAIL.....	GR
FENCE LINE.....	INTERSECTION ANGLE.....	A
RIGHT-OF-WAY LINE.....	RADIUS.....	R
TRAVELLED WAY.....	ELEVATION.....	EL
RAILROADS.....	VERTICAL CURVE.....	V.C.
RETAINING WALL.....	BENCH MARK.....	B.M.
BASE OR SURVEY LINE.....	SECTIONAL CONCRETE CULVERT.....	P.1
LEYER.....	CORRUGATED METAL CULVERT.....	C.M.
GRAVEL PIT.....	CULVERT HAUL.....	P.L.H.
SAND PIT.....	TON MILES.....	T.M.
CLAY PIT.....	PLACE.....	P
ROCK QUARRY.....	IN PLACE.....	INP.
CULVERTS.....	REPLACE.....	Rep.
PLAIN.....	RIGHT.....	R
With FACEWALLS.....	LEFT.....	L
With WINGWALLS.....	HAND DITCHING.....	H.D.
DROP INLET.....	POINT OF CURVE.....	P.C.
POWER POLE LINE.....	POINT OF TANGENT.....	P.T.
TELEPHONE OR TELEGRAPH LINE.....	POINT OF INTERSECTION.....	P.I.
MARSH.....	SPECIAL EXCAVATION.....	S.E.
HERDGE, BUSH, OR TIMBER.....	SPECIAL FLOWING.....	S.P.
GROUND ELEVATION.....	TELEPHONE POLE.....	T.E.P.
GRADE ELEVATION.....		

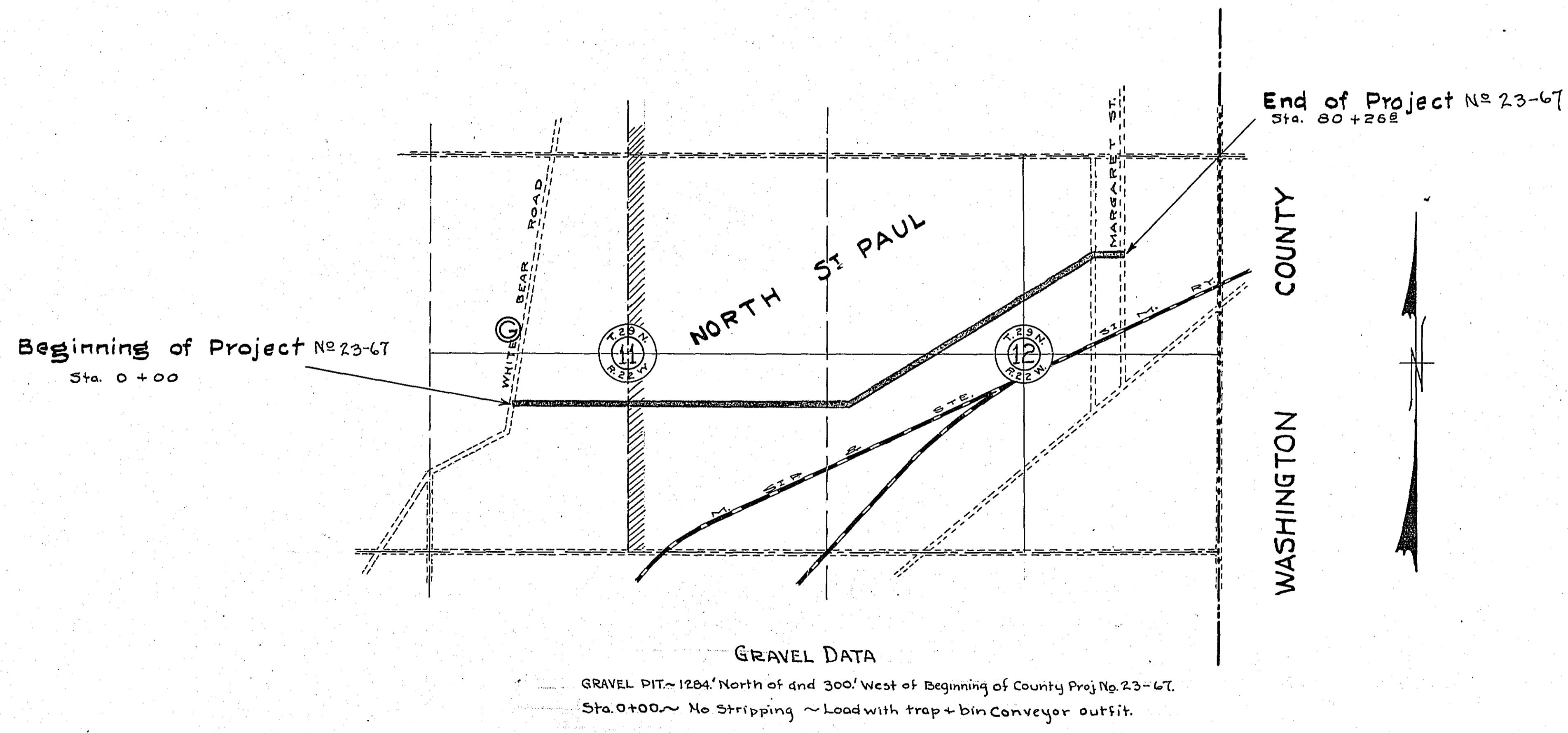
OFFICE OF COUNTY SURVEYOR  
RAMSEY COUNTY  
Plan and Profile of County Project No. 23-67

From 660' S. & 1545' W. of Cen. Sec. 11-29-22 To 958' N. & 703' E. of Cen. Sec. 12-29-22  
Give proper reference to Sections, Township and Range

GROSS LENGTH.....7995.0 FEET 1.514 MILES  
LENGTH OF EXCEPTIONS..... FEET MILES  
NET LENGTH.....7995.0 FEET 1.514 MILES  
PLAN, 1 Inch = 200 Feet  
PROFILE, Horz. 1 Inch = 200 Feet, Vert. 1 Inch = 20 Feet  
SCALES (WORKING PLANS) Horz. 1 Inch = 100 Feet, Vert. 1 Inch = 10 Feet, Cross-Sections, 1 Inch = 10 Feet  
LAYOUT SCALE, 1 Inch = 1320 Feet

INDEX OF SHEETS

Sheet No. 1. Title Sheet and Layout Map  
" No. 2. Typical Cross-Sections and Statement  
" No. 3. Plan and Profile, Sta. 0+00 to Sta. 80+26.8  
" No. 4. & 5 Cross-Sections, Sta 0+00 to 80+26.8

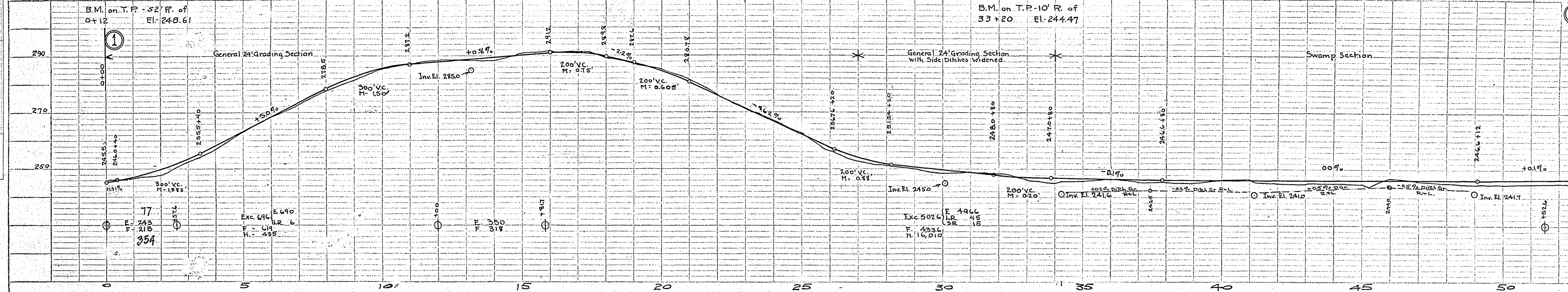
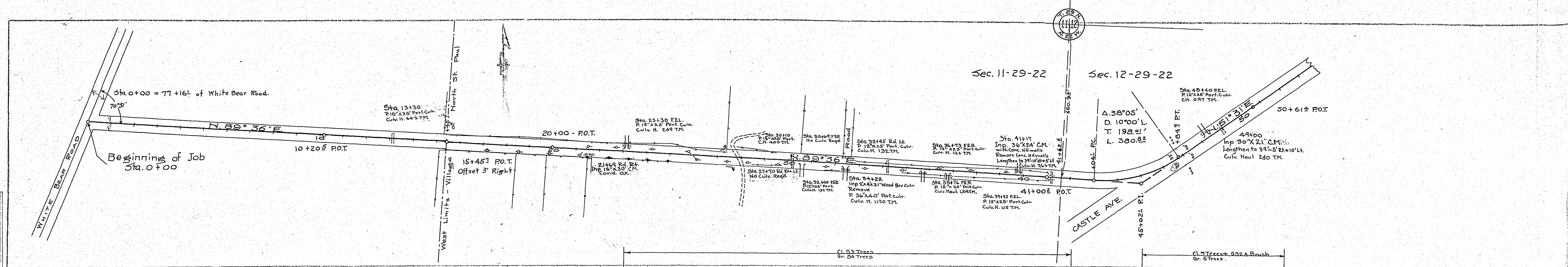


Date of Resolution for preparation of plans Mar. 5, 1923  
Planned by R. J. Hollander DESIGNING HIGHWAY ENGINEER  
Recommended for Approval E. J. Bligh CONSTRUCTION ENGINEER  
Plans Approved and Recommended for Consideration Paul J. Coates COUNTY SURVEYOR  
Approved by County Board \_\_\_\_\_ 19 \_\_\_\_\_ CHAIRMAN OF COUNTY BOARD



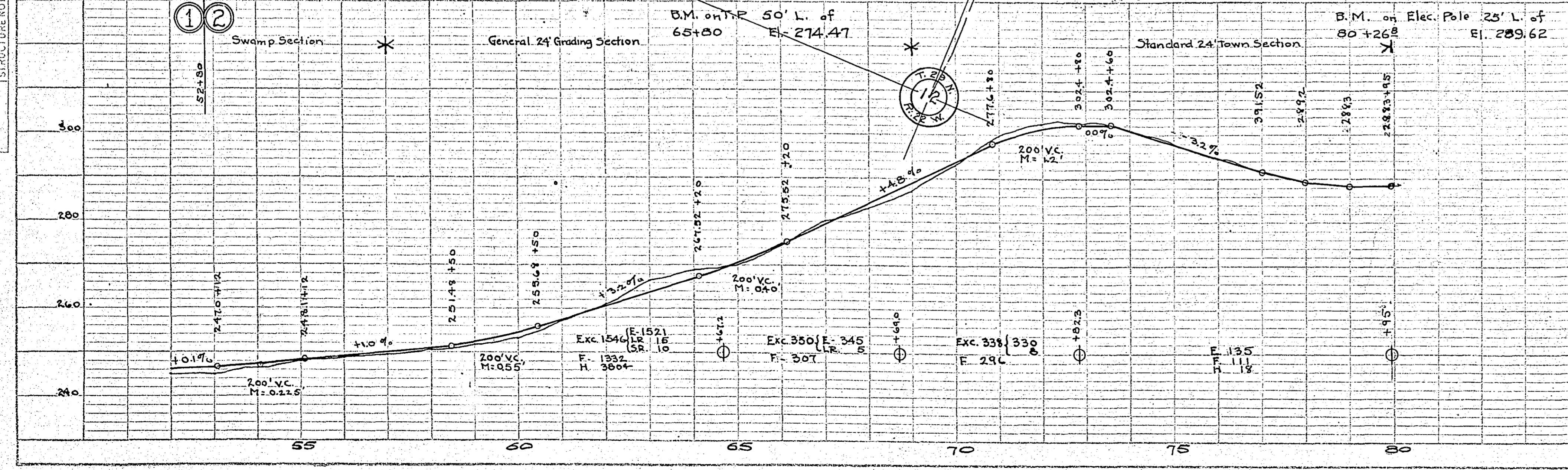
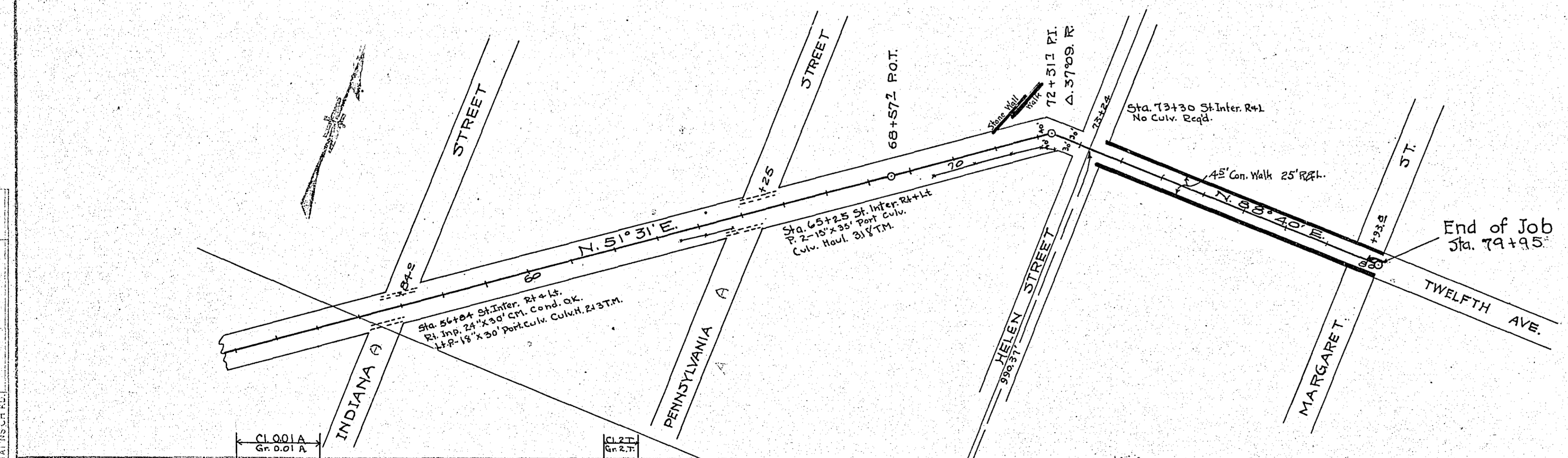
PLAN SURVEYED BY DATE  
 PLOTTED BY  
 NOTE BOOK NO. CHECKED BY  
 STRUCTURE NOTATION CHECKED BY

PROFILE SURVEYED BY DATE  
 PLOTTED BY  
 NOTE BOOK NO. CHECKED BY  
 STRUCTURE NOTATION CHECKED BY



ESTIMATED QUANTITIES  
 Sta. 0+00 to Sta. 51+52.6

CI	58	Trees	
Gr	58	Trees	
CL Brush	9.82	Acres	
Exc.	E	6249	CY
	LR	51	CY
	SR	15	CY
H	16445	CY Sta	
Port. Culv.	15"	150	Lin. Ft.
	18"	75	Lin. Ft.
	30"	15	Lin. Ft.
	36"	55	Lin. Ft.
PI. H.	3598	T.M.	
Gravel Surfacing	0-1 Mile	240	CY
	1-1 Mile	600	CY
	Over 1 Mile Pt.	231	CY
Over 1 Mile Pt.	46	CY Miles	



ESTIMATED QUANTITIES  
 Sta. 51+52.6 to Sta. 79+95

CI	2	Trees	
Gr	2	Trees	
CI	0.01	A.	
Gr	0.01	A.	
Exc.	E	2331	CY
	LR	28	CY
	SR	10	CY
H	3822	Sta Yds.	
Port. Culv.	15"	10	Lin. Ft.
	18"	30	"
PI. Culv. Haul	531	T.M.	
Gravel Surfacing	0-1 Mile Pt.	647	CY
	Over 1 Mile Pt.	352	CY Miles