

MILE 3-B
Sta. 121+00 to Sta. 137+91

E	1522	Cu. Yds.
H	395	
Port. Curb	12"	55 Lin. Ft.
	15"	30 "
Pi. Haul	3.24	T.M.
Scarifying	16.91	Sq. Yds.
Paving	3903.36	Sq. Yds.
Integral Curb	278	Lin. Ft.
Surface Drains	1	

PLAN SURVEYED BY DATE
 NOTE BOOK ALIGNMENT CHECKED
 RT. OF WAY CHECKED
 NO.

PROFILE SURVEYED BY DATE
 NOTE BOOK GRADES CHECKED
 B.M.'S NOTED
 STRUCTURE NOTED IN CH.

3803

CONVENTIONAL SIGNS & ABBREVIATIONS

STATE LINE	-----	EXCAVATION	E
COUNTY LINE	-----	EMBANKMENT	F
TOWNSHIP LINE	-----	OVERHAUL	H
SECTION LINE	-----	SURFACING	S
CITY, VILLAGE, OR BOROUGH	-----	GUARD RAIL	GR
FENCE LINE	-----	INTERSECTION ANGLE	A
RIGHT-OF-WAY LINE	-----	RADIUS	R
TRAVELLED WAY	-----	ELEVATION	EL
RAILROADS	-----	VERTICAL CURVE	KC
RETAINING WALL	-----	BENCH MARK	B.M.
BASE OR SURVEY LINE	-----	SECTIONAL CONCRETE CULVERT	P.C.
LEVEE	-----	CORRUGATED METAL CULVERT	C.M.
GRAVEL PIT	⊙	CULVERT HAUL	P.H.
SAND PIT	⊙	TON MILES	T.M.
CLAY PIT	⊙	PLACE	P
ROCK QUARRY	⊙	IN PLACE	Imp.
CULVERTS	-----	REPLACE	Rep.
PLAIN	-----	RIGHT	R
WITH FACE WALLS	-----	LEFT	L
WITH WING WALLS	-----	HAND DITCHING	H.D.
DROP INLET	-----	POINT OF CURVE	P.C.
POWER POLE LINE	-----	POINT OF TANGENT	P.T.
TELEPHONE OR TELEGRAPH LINE	-----	POINT OF INTERSECTION	P.I.
MARSH	-----	SPECIAL EXCAVATION	S.E.
HEDGE, BRUSH, OR TIMBER	-----	SPECIAL FLOWING	S.F.
GROUND ELEVATION	-----	TELEPHONE POLE	TEL.P.
GRADE ELEVATION	-----		

OFFICE OF COUNTY ENGINEER
RAMSEY COUNTY

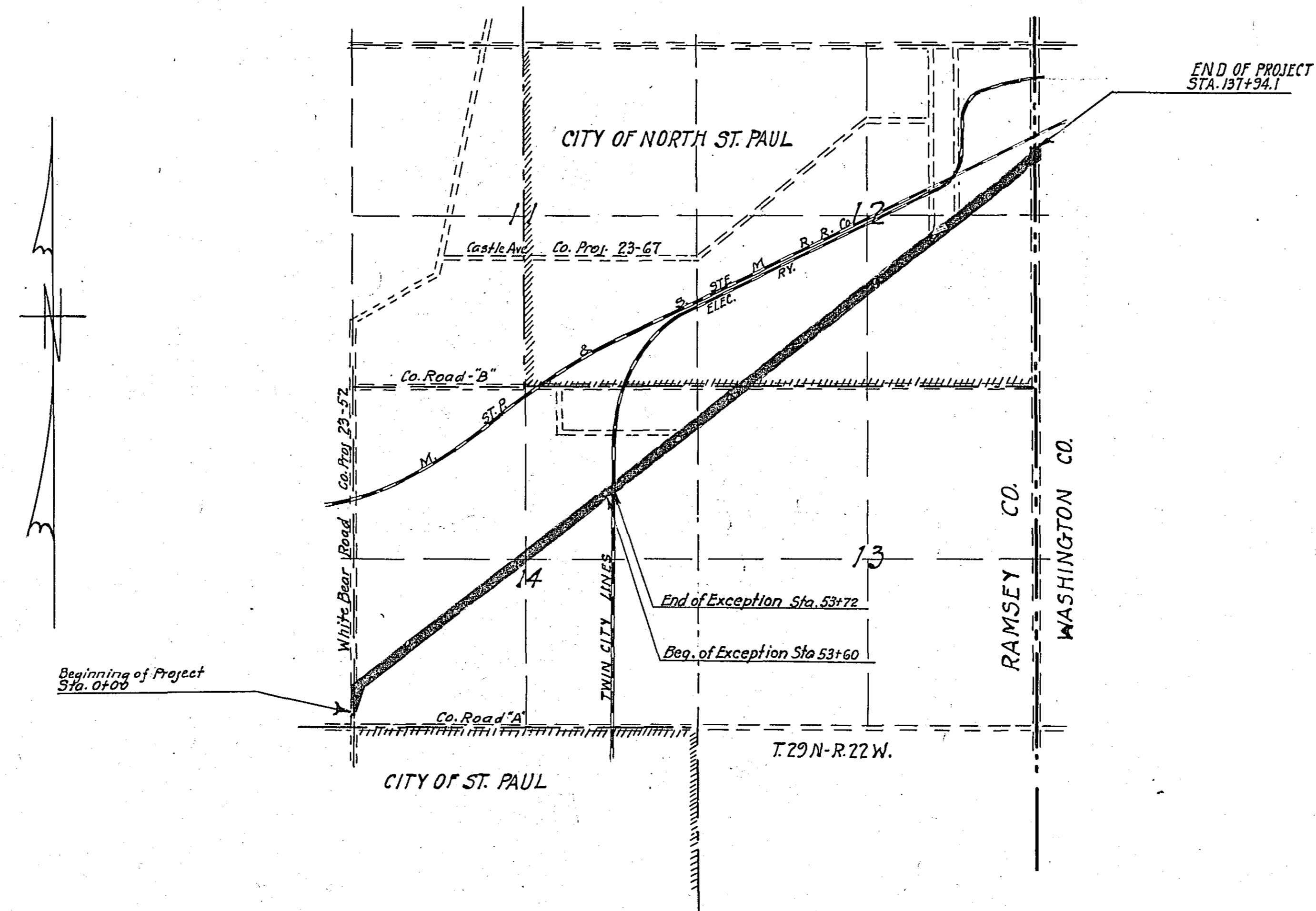
Plan and Profile of County Project No. 23-54

From 1718' No. of SW. Cor. of Sec. 14, T29N-R22W To 987.5' No. of the East 1/4 Cor. Sec. 12, T29N-R22W

GROSS LENGTH 13791.4 FEET 2.610 MILES
 LENGTH OF EXCEPTIONS 12 FEET .002 MILES
 NET LENGTH 13779.4 FEET 2.608 MILES
 PLAN, 1 Inch = 200 Feet
 PROFILE, Horiz. 1 Inch = 200 Feet, Vert. 1 Inch = 20 Feet
 WORKING PLANS
 Horiz. 1 Inch = 100 Feet
 Vert. 1 Inch = 10 Feet
 Cross-Sections, 1 Inch = 10 Feet
 LAYOUT
 SCALE, 1 Inch = 1760 Feet

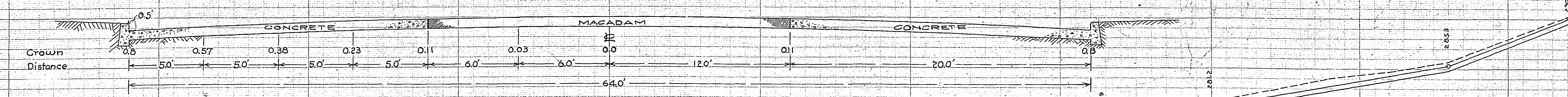
INDEX OF SHEETS

Sheet No. 1.	Title Sheet and Layout Map
" No. 2.	Typical Cross-Sections and Statement
" No. 3.	Plan and Profile, Sta. 0+00 to Sta. 105
" No. 4.	" " " 105 " " 137+91.4
" No. 5.	Special Plan & Profile Sta. 95 " " 121
" No. 6.	to 9 incl. Cross Sections Sta. 0+00 to Sta. 137+91.4
" No. 10.	Detail of Curve at Sta. 0+00 & Street Intersections
" No. 11.	Standard Curve Details
" No. 12.	Special Pavement Details & Tile Outlet



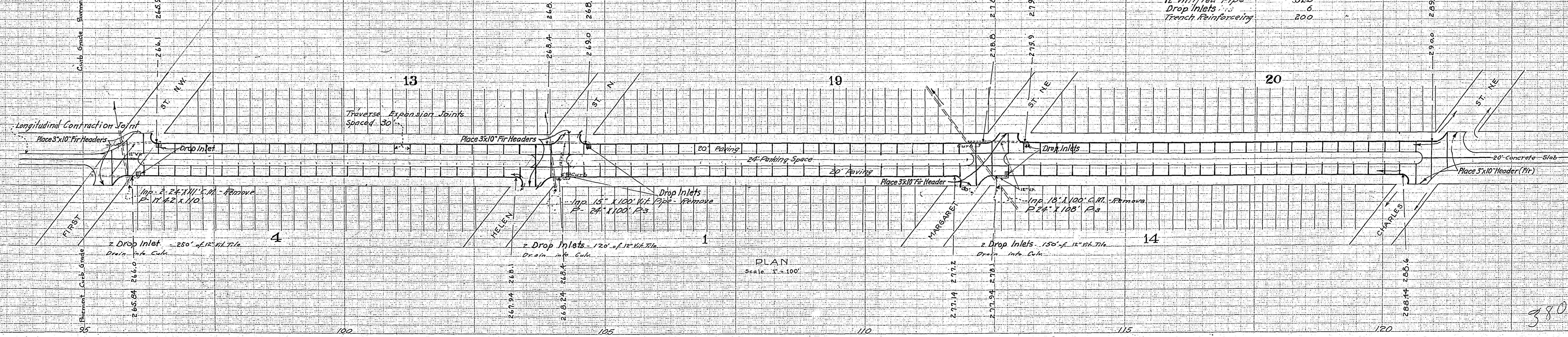
Date of Resolution for Preparation of Plans Jan 19 23
 Planned by P.J. W. [Signature] SIGNING HIGHWAY ENGINEER
 Recommended for Approval E. [Signature] CONSTRUCTION ENGINEER
 Plans Approved and Recommended for Consideration [Signature] COUNTY ENGINEER
 Approved by County Board 19 [Signature] CHAIRMAN OF COUNTY BOARD

3803



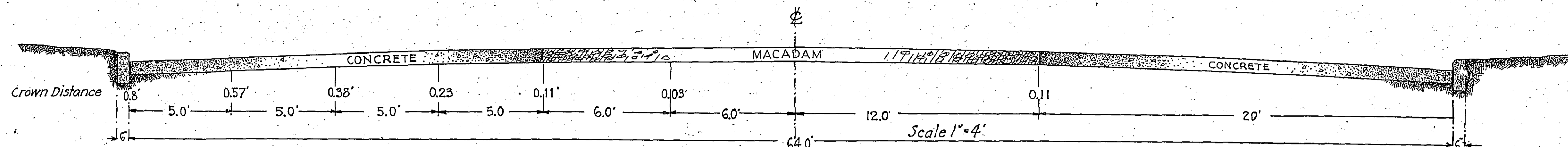
Estimated Quantities
 95 + 00 to Sta. 121 + 00
 Excavation 3500 Cu.Yds. to be deposited at direction of Engineer
 Free Haul Limit 1000 Ft.

Total Paving	13,212.49 Sq. Yds.
20" Highway Slab	5,255.55
12" Radius Slab	7,256.02
Straight Curb	4,739.4 Lin. Ft.
12" Radius Curb	40.2 "
25" "	34.2 "
12" Vitrified Pipe	320 "
Drop Inlets	6 "
Trench Reinforcing	200 "

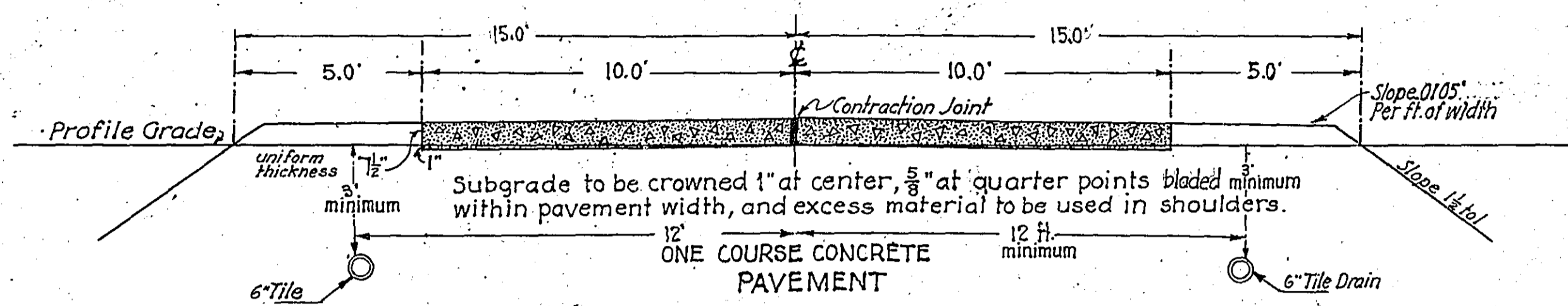


3803

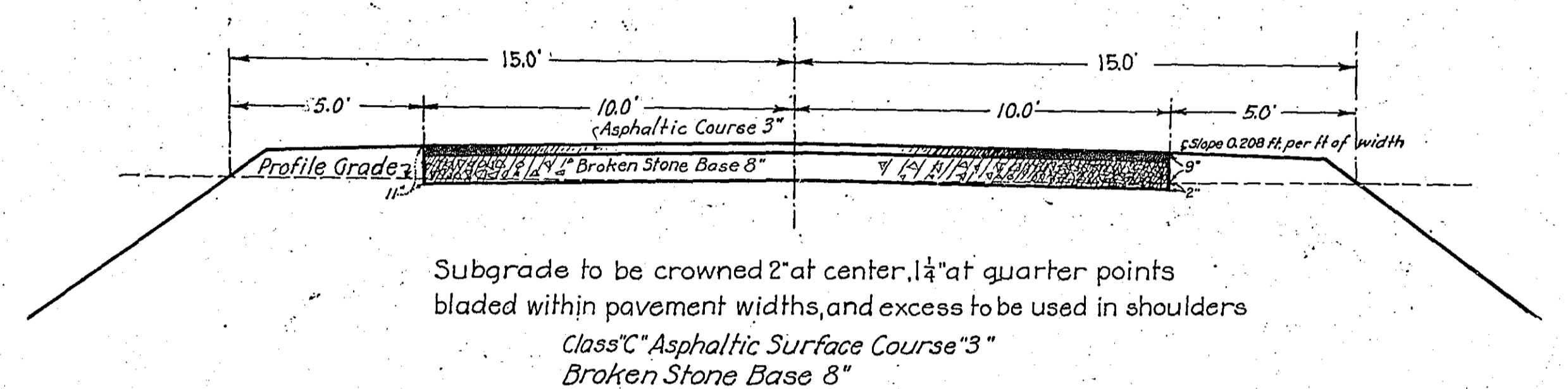
TYPICAL CROSS-SECTIONS AND DETAILS.



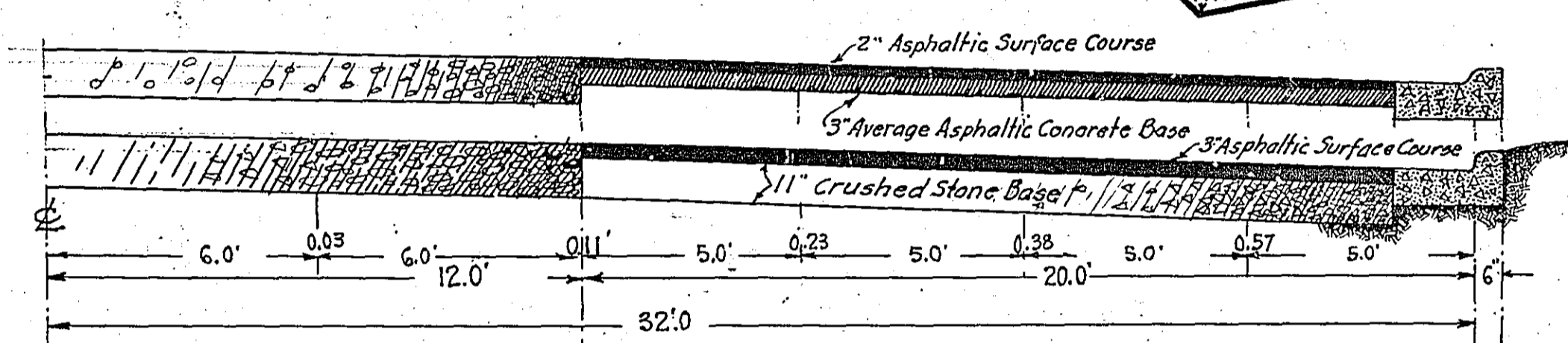
CITY PAVING SECTION
Sta. 95+00 to 121+00



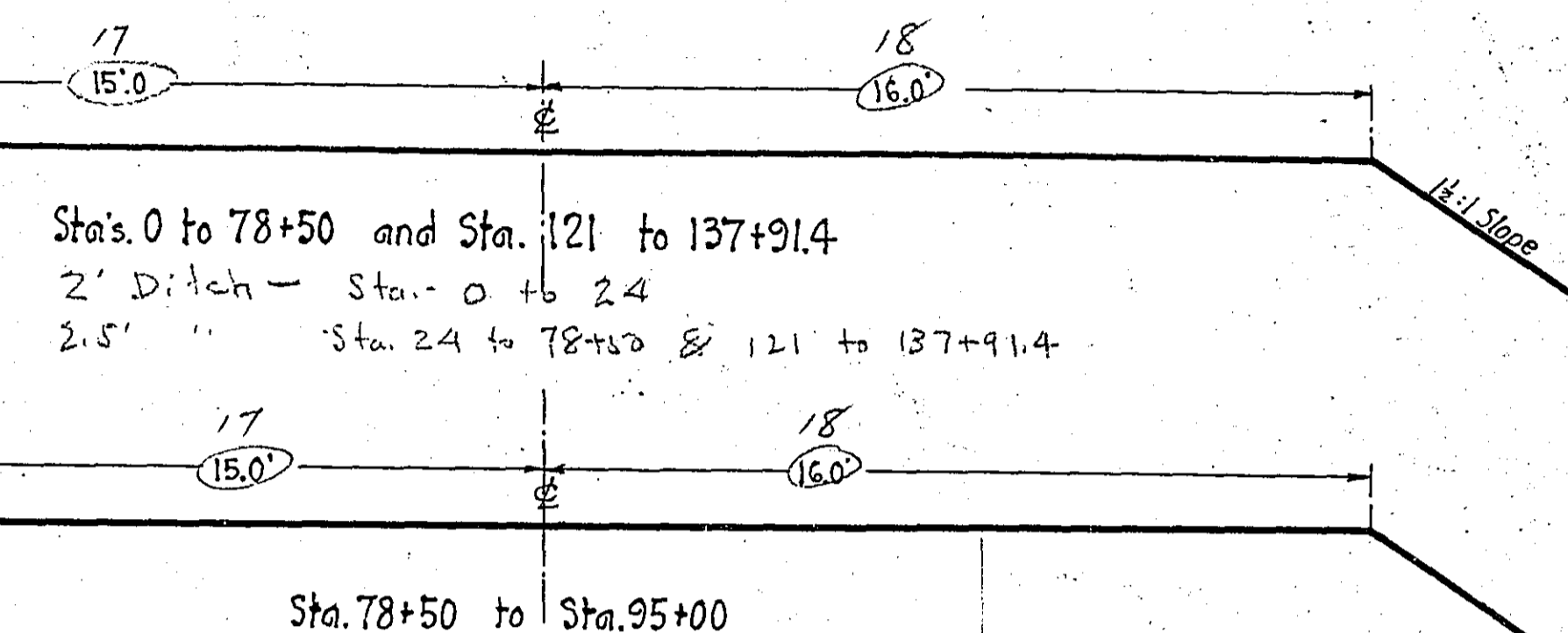
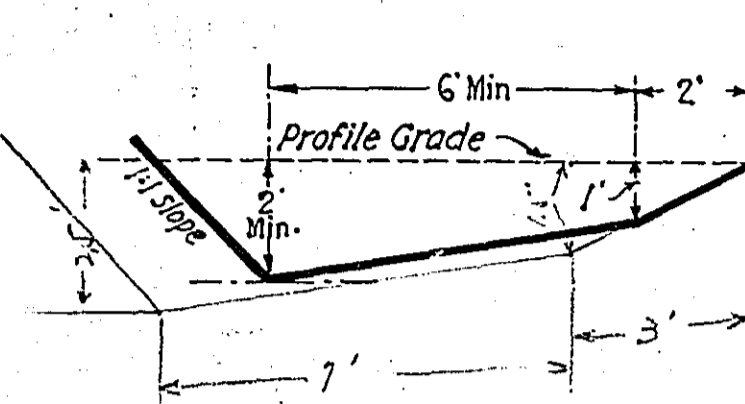
Sta. 0+00 to Sta. 95+00 and Sta. 121+00 to Sta. 137+91.4



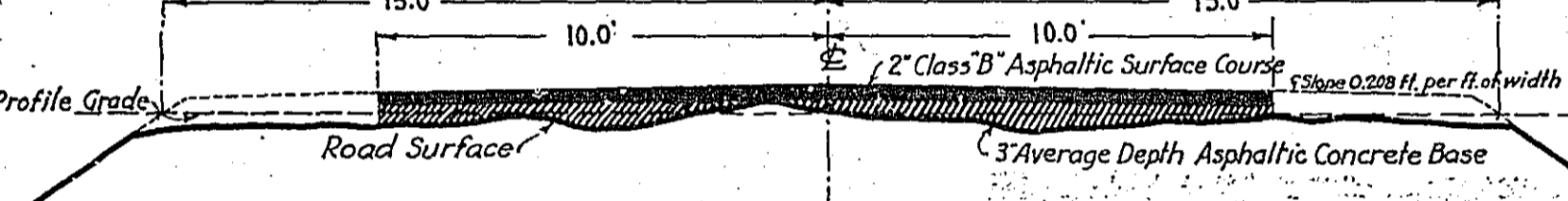
ALTERNATE SECTION-ASPHALTIC SURFACE
BROKEN STONE BASE



HALF ALTERNATE CITY PAVING SECTIONS
Sta. 95+00 to 121+00



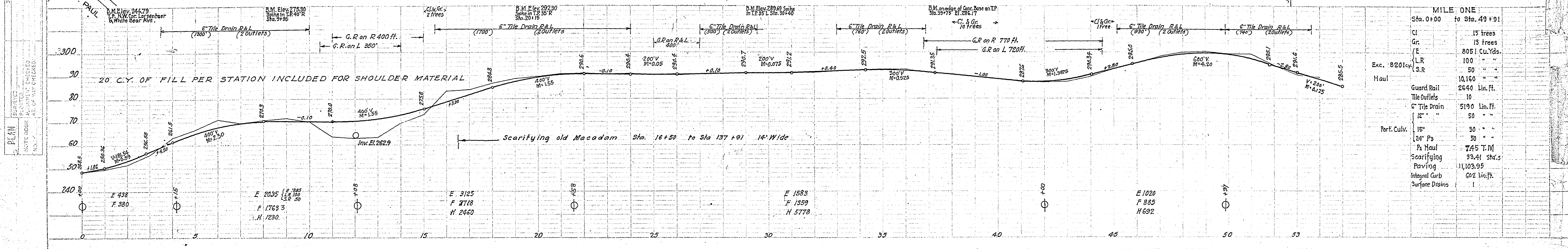
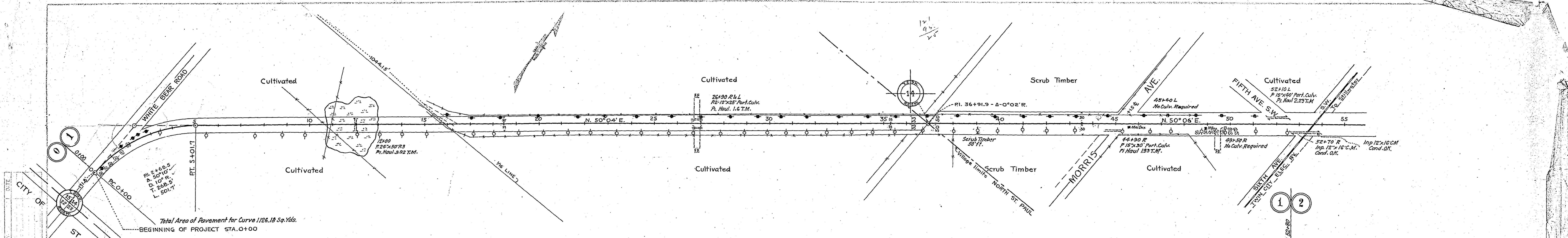
Sta. 78+50 to Sta. 95+00



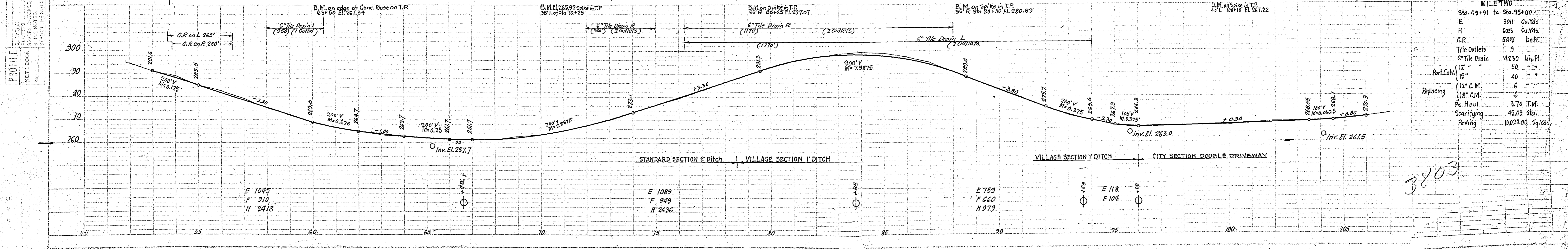
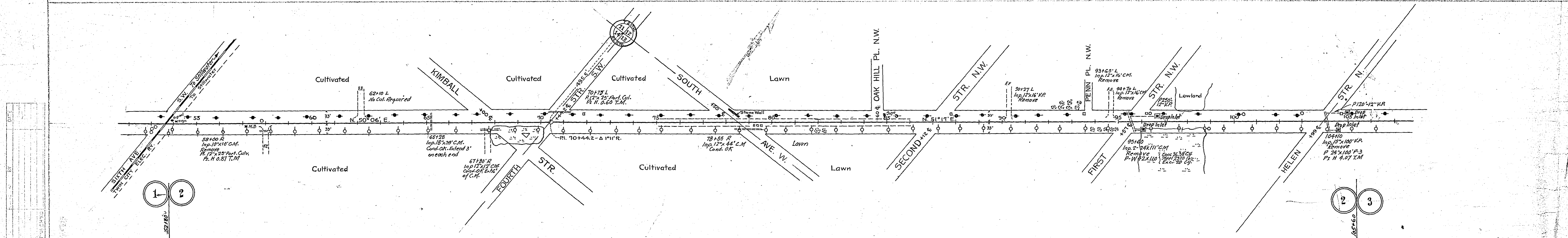
ALTERNATE SECTION-ASPHALTIC COURSE
ASPHALTIC CONCRETE BASE

STATEMENT OF ESTIMATED QUANTITIES AND COSTS.

SHEET NO.	STATION TO STATION	CLEARING TREES	GRUBBING TREES	EXCAVATION CU. YDS.										GRADING ITEMS						TOTAL COST GRADING	PAVING SQ. YDS.	INTEGRAL CURB.	DRAINS	DROP INLETS	PAVING ITEMS					TOTAL COST PAVING	BRIDGES & CULVERTS					TOTAL COST STRUCTURES	ESTIMATED COST GRAND TOTAL																					
				EARTH	LOOSE ROCK	SOLID ROCK	HAND DITCH	OVER HAUL	GUARD RAIL	SCARIFYING	VITRIFIED PIPE	TILE OUTLETS	SCARIFYING	TILE DRAIN LIN. FT.	PORTABLE CULVERTS	REPLACING C.M.	HAULING CULVERTS	CITY CURB	TRENCH REINFORCEMENT						CU. YDS. CONCRETE	POUNDS REIN. STEEL	POUNDS STRUCTURAL STEEL	PILING LIN. FEET	TEMPORARY CROSSING		EXCAVATION CU. YDS.																											
Est. Quantities	3 0+00 89+91	13	13	8051	100	50					10160	2640	33.41	10	5190	50	30	50			7.45	11,033.95	602	1																																		
"	3 89+91 95+00			3011							6033	545	45.09	9	4230	50	40			6	3.70	10,020.00																																				
"	4 95+00 121+00			3526														208				11.52	13,212.44		6	4739.4	34.2	40.2	10	1000																												
"	4 121+00 137+91			1522													55	30				3.74	3,903.38	278	1																																	
Total Est. Quant.	Ca. Project No 23-54	13	13	16,110	100	50					16,588	3,185	95.41	19	9,420	155	100	258		6	6 29.91	38,239.82	880	2	6 4739.4	34.2	40.2	10	1000				20																									
Est. Unit Costs																																																										
Total Est. Costs	Ca. Project No 23-54																					19,621.86														1,095.40	111,200.71																					
QUANTITIES FOR VILLAGE OF NORTH ST. PAUL																																																										
Est. Quantities	3 95+00 121+00			2468											520						6102																																					
Unit Costs																																																										
Total Est. Costs	VILLAGE OF NORTH ST. PAUL																																																									
QUANTITIES FOR RAMSEY COUNTY																																																										
Est. Quantities	3 0+00 89+91	13	13	8051	100	50					10160	2640	33.41	10	5190	50	30	50			7.45	11,033.95	602	1																																		
"	3 89+91 95+00			3011							6033	545	45.09	9	4230	50	40			6	3.70	10,020.00																																				
"	4 95+00 121+00			1058																		5,355.55																																				
"	4 121+00 137+91			1522													55	30				3.24	3,903.38	278	1																																	
Total Est. Quant.	RAMSEY Co.	13	13	13,642	100	50					16,588	3,185	95.41	19	9,420	155	100	50		6	6 19.39	30,982.88	880	2																																		
Unit Costs																																																										
Total Est. Costs	RAMSEY Co.																																																									



MILE ONE	
Sta. 0+00	to Sta. 49+91
Cl	15 trees
Gr	13 trees
E	8051 Cu.Yds.
L.R	100 "
Exc. 18201	3.R
	50 "
	10,160 "
	2640 Lin.Ft.
	10 "
	5190 Lin.Ft.
	50 "
	15 "
	30 "
	24" Pa
	745 T.M
	33.41 Sta's
	11,103.95
	602 Lin.Ft.
	1



MILE TWO	
Sta. 49+91	to Sta. 95+00
E	3011 Cu.Yds.
H	6033 Cu.Yds.
G.R	5475 Lin.Ft.
	9
	4230 Lin.Ft.
	50 "
	40 "
	6 "
	3.70 T.M.
	45.09 Sta.
	10,020.00 Sq.Yds.

PLAN
 DRAWN BY: [Name]
 CHECKED BY: [Name]
 DATE: [Date]

PROFILE
 DRAWN BY: [Name]
 CHECKED BY: [Name]
 DATE: [Date]

3803