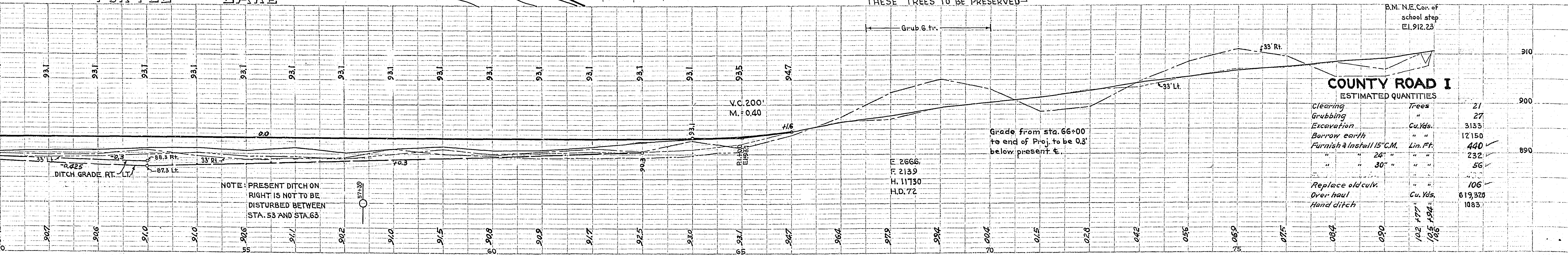
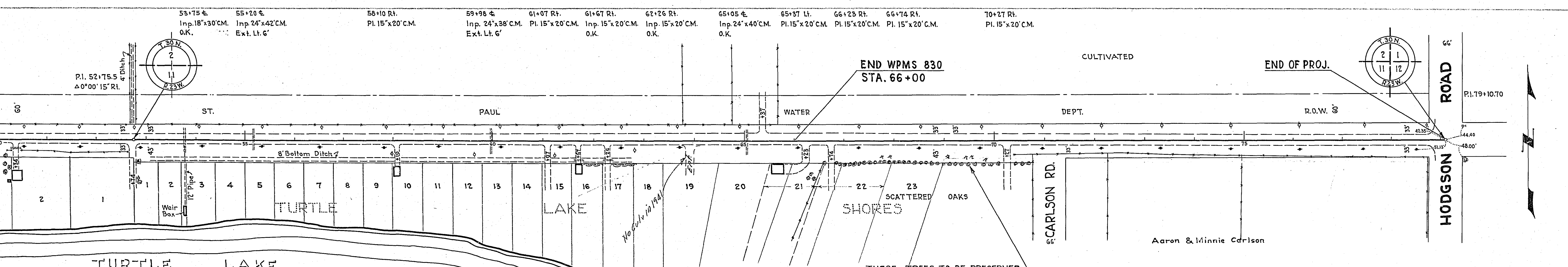
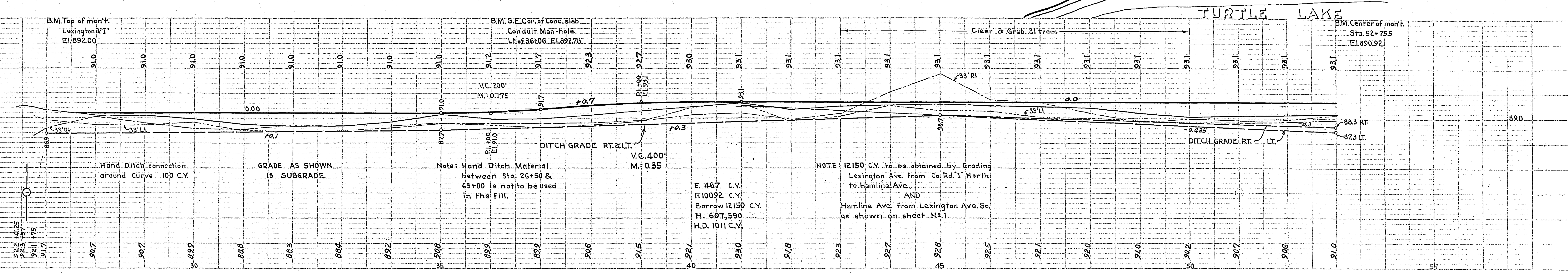
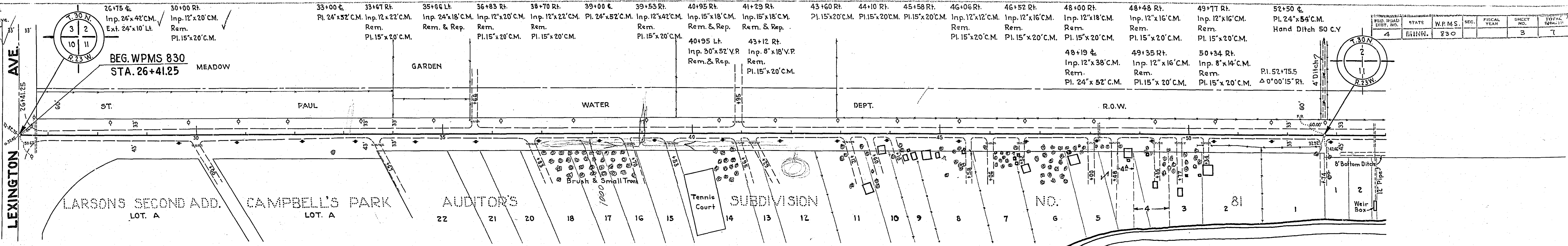


Note: 20' x 42' V.P. Culv. thru Lexington Ave. 950' S of Co. Rd. 'I' to be removed. Pl. 30' x 56' C.M.



COUNTY ROAD I ESTIMATED QUANTITIES		
Clearing	Trees	21
Grubbing	"	27
Excavation	Cu. Yds.	3133
Borrow earth	"	12150
Furnish & Install 15" C.M.	Lin. Ft.	440
" " 24" " " "	"	232
" " 30" " " "	"	56
Replace old culv.	"	106
Over haul	Cu. Yds.	619,320
Hand ditch	"	1083

CONVENTIONAL SIGNS & ABBREVIATIONS

STATE LINE.....	EXCAVATION.....	E
COUNTY LINE.....	EMBANKMENT.....	F
TOWNSHIP LINE.....	OVERHAUL.....	H
SECTION LINE.....	SURFACING.....	S
CITY, VILLAGE, OR BOROUGH.....	GUARD RAIL.....	G.R.
FENCE LINE.....	INTERSECTION ANGLE.....	Δ
RIGHT-OF-WAY LINE.....	RADIUS.....	R
TRAVELLED WAY.....	ELEVATION.....	EL.
RAILROADS.....	VERTICAL CURVE.....	V.C.
DETAINING WALL.....	BENCH MARK.....	B.M.
BASE OR SURVEY LINE.....	SECTIONAL CONCRETE CULVERT.....	P.C.
LEVEE.....	CORRUGATED METAL CULVERT.....	C.M.
GRAVEL PIT.....	CULVERT HAUL.....	P.H.
SAND PIT.....	TON MILES.....	T.M.
CLAY PIT.....	IN PLACE.....	Imp.
ROCK QUARRY.....	REPLACE.....	Rep.
CULVERTS.....	RIGHT.....	R
PLAIN.....	LEFT.....	L
WITH FACE WALLS.....	HAND DITCHING.....	H.D.
WITH WING WALLS.....	POINT OF CURVE.....	P.C.
DROP INLET.....	POINT OF TANGENT.....	P.T.
POWER POLE LINE.....	POINT OF INTERSECTION.....	P.I.
TELEPHONE OR TELEGRAPH LINE.....	SPECIAL EXCAVATION.....	S.E.
MARSH.....	SPECIAL FLOWING.....	S.F.
HEDGE, BRUSH, OR TIMBER.....	TELEPHONE POLE.....	Tel.P.
GROUND ELEVATION.....		
GRADE ELEVATION.....		

OFFICE OF COUNTY SURVEYOR
 RAMSEY COUNTY
 Plan and Profile of County Road "I"

From the N.W. Cor. Sec. 11-30-23 To the N.E. Cor. Sec. 11-30-23

GROSS LENGTH 5269.45 FEET 1.01 MILES
 LENGTH OF EXCEPTIONS FEET MILES
 NET LENGTH 5269.45 FEET 1.01 MILES

PLAN, 1 Inch = 100 Feet
 PROFILE, Horz. 1 Inch = 100 Feet. Vert. 1 Inch = 10 Feet
 WORKING PLANS { Horz. 1 Inch = 100 Feet
 Vert. 1 Inch = 10 Feet
 Cross-Sections, 1 Inch = 10 Feet

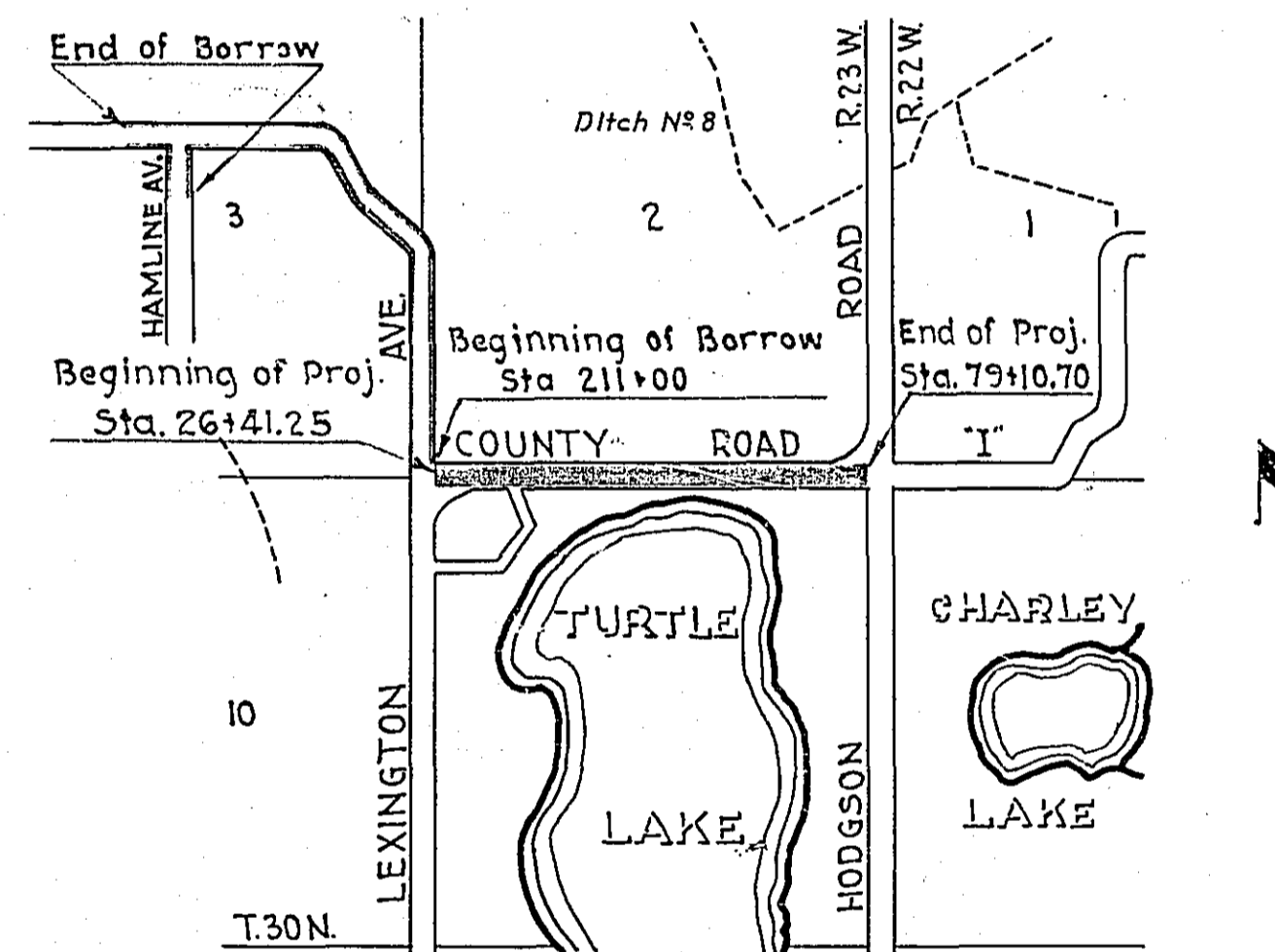
LAYOUT
 SCALE, 1 Inch = 2640 Feet

MINNESOTA W.P.M.S. 830

NOTE: Specifications approved by the Chief of Bureau Oct. 3, 1929 with revisions approved Sept. 13, 1933 to govern.

INDEX OF SHEETS

- Sheet No. 1. Title Sheet and Layout Map
- " No. 2. Typical Cross-Sections and Statement
- " No. 3. Plan and Profile, Sta. 26+41.25 to Sta. 79+10.70
- " No. 4, 5, 6 & 7 Cross Sections



NOTE: Binder soil to be hauled from a cut on S.T.H. No. 96 0.2 Mi. west of Lexington Ave. Dead haul 2.5 Mi.
 Gravel to be hauled from the Ramsey Co. Pit at the University Farm. Dead haul 11.5 Mi.

Recommended for Approval _____ District Engineer B. of P.R.
 Recommended for Approval _____ Chief Engineer B. of P.R.
 Approved _____ Director B. of P.R.
 Planned by *Ernest K. Schulz*
 County Surveyor of **RAMSEY** COUNTY
 Approved by County Board *Wm. H. Lehman* CHAIRMAN OF COUNTY BOARD
 Approved *6/1* 1936 *J.P. Erickson* CHIEF ENGINEER MINN. STATE HIGHWAY DEPT.

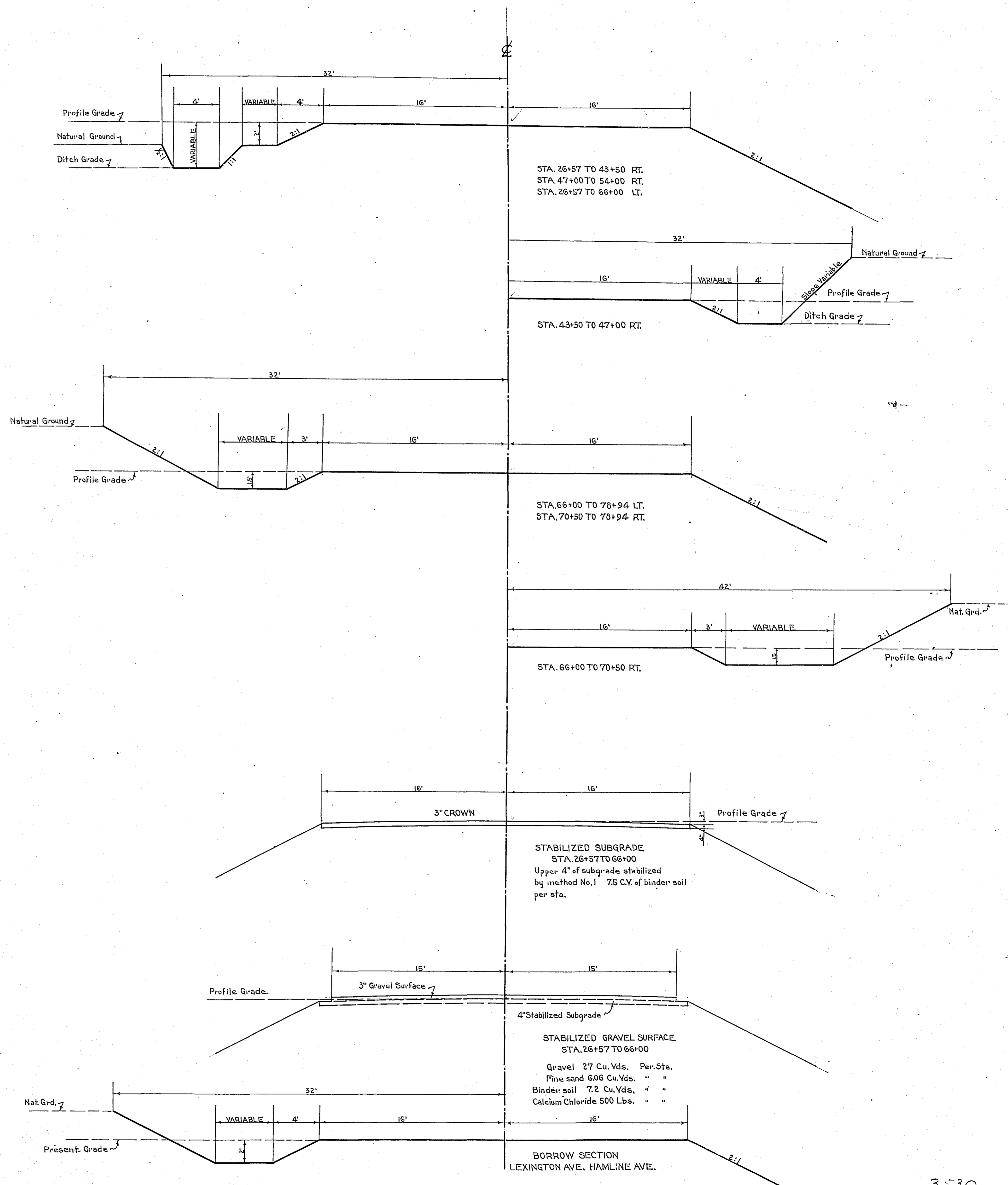
PROJECT No. 62-01

STATEMENT OF ESTIMATED QUANTITIES

CLASS	ITEM	UNIT	MILE From To	MILE From To	MILE From To	MILE From To	MILE From To	MILE From To	MILE From To	MILE From To	MILE From To	MILE From To	TOTAL ESTIMATED QUANTITIES
GRADING	1	Clearing	Trees	21									21
	2	Grubbing	Trees	27									27
	3	Clearing	Acres										
	4	Grubbing	Acres										
	5	Excavation - Earth	Cu. Yds.	3133									3133
	6	Excavation - Borrow	Cu. Yds.	12150									12150
	7	Excavation Solid Rock	Cu. Yds.										
	8	Excavation Overhaul	Cu. Yds.	619320									619320
	9	Excavation Special	Cu. Yds.										
	10	Excavation Hand Ditch	Cu. Yds.	1083									1083
	11	Install 12" C.M.	Lin. Ft.										
	12	Install 15" C.M.	Lin. Ft.	440									440
	13	Install 18" C.M.	Lin. Ft.										
	14	Install 24" C.M.	Lin. Ft.	232									232
	15	Install 30" C.M.	Lin. Ft.	56									56
	16	Install	Lin. Ft.										
	17	Install 18" Ps	Lin. Ft.										
	18	Install 24" Ps	Lin. Ft.										
	19	Install 30" Ps	Lin. Ft.										
	20	Install 36" Ps	Lin. Ft.										
	21	Install	Lin. Ft.										
	22	Install	Lin. Ft.										
	23	Remove Old Culvert	Lin. Ft.										
	24	Relay Culvert	Lin. Ft.	106									106
	25	Finishing and Seeding	100 Sq.Yds.										
	26	Rubble Gutter	Cu. Yds.										
	27	Headwall Concrete	Cu. Yds.										
	28	Headwall Steel	Lbs.										
	29												
	30												
	31												
	32												
C.M. CULVERTS	41	Furnish 12" C.M.	Lin. Ft.										
	42	Furnish 15" C.M.	Lin. Ft.	440									440
	43	Furnish 18" C.M.	Lin. Ft.										
	44	Furnish 24" C.M.	Lin. Ft.	232									232
	45	Furnish 24" C.M.	Lin. Ft.										
	46	Furnish 30" C.M.	Lin. Ft.	56									56
	47	Furnish 24" C.M. Band	Each										
	48	Furnish 15" C.M. Band	Each										
49													
P ₃ CULVERTS	51	Furnish 18" P ₃	Lin. Ft.										
	52	Furnish 24" P ₃	Lin. Ft.										
	53	Furnish 30" P ₃	Lin. Ft.										
	54	Furnish 36" P ₃	Lin. Ft.										
	55												
	56												
GUARD RAIL	61	Guard Rail - Cable	Lin. Ft.										
	62	Guard Rail Anchors	Each										
	63	Dummy Posts	Each										
	64												
SIDEWALKS AND CURBING	71	Concrete Curb - Straight	Lin. Ft.										
	72	Concrete Curb - Radius	Lin. Ft.										
	73	Remove Old Curb	Lin. Ft.										
	74	Remove Old Curb and Gutter	Lin. Ft.										
	75	Remove Old Sidewalk	Sq. Ft.										
	76	Replace Old Sidewalk	Sq. Ft.										
	77	Construct New Sidewalk	Sq. Ft.										
	78	Curb Inlet	Each										
	79	Catch Basin Complete	Each										
	80												
SEWER	81	12" Vitrified Sewer Pipe	Lin. Ft.										
	82	15" Vitrified Sewer Pipe	Lin. Ft.										
	83	18" Vitrified Sewer Pipe	Lin. Ft.										
	84	20" Vitrified Sewer Pipe	Lin. Ft.										
	85	24" Vitrified Sewer Pipe	Lin. Ft.										
	86	Manhole Complete	Each										
	87	Catch Basin Complete	Each										
	88												
	89												
	90												
SUBGRADE STABILIZING	91	Loading binder soil	Cu. Yds.	296									296
	92	Hauling binder soil	Cu. Yd. Mi.	740									740
	93	Stabilization of subgrade	Sq. Yds.	14020									14020
	94												
	95												
	96												
	97												
	98												
STABILIZED GRAVEL SURFACE	101	Screen & Load Gravel	Cu. Yds.	1066									1066
	102	Hauling Gravel	C.Y.M.	12259									12259
	103	Calcium Chloride (Applied)	Ton	9.85									9.85
	104	Loading binder soil	Cu. Yds.	284									284
	105	Hauling binder soil	C.Y.M.	710									710
	106												
	107	Loading sand	Cu. Yds.	240									240
	108	Hauling sand	C.Y.M.	300									300
	109	Stabilization of Surface Course - Method #2	Cy. Yds.	1590									1590
	110	Shape & Maintain Subgrade	Trk Gr. Hrs.	12									12

DETAILS

STATE	W.P.M.S.	PROJECT	SHEET	DATE
MINN.	330		2	7



PROJECT No 62-01