

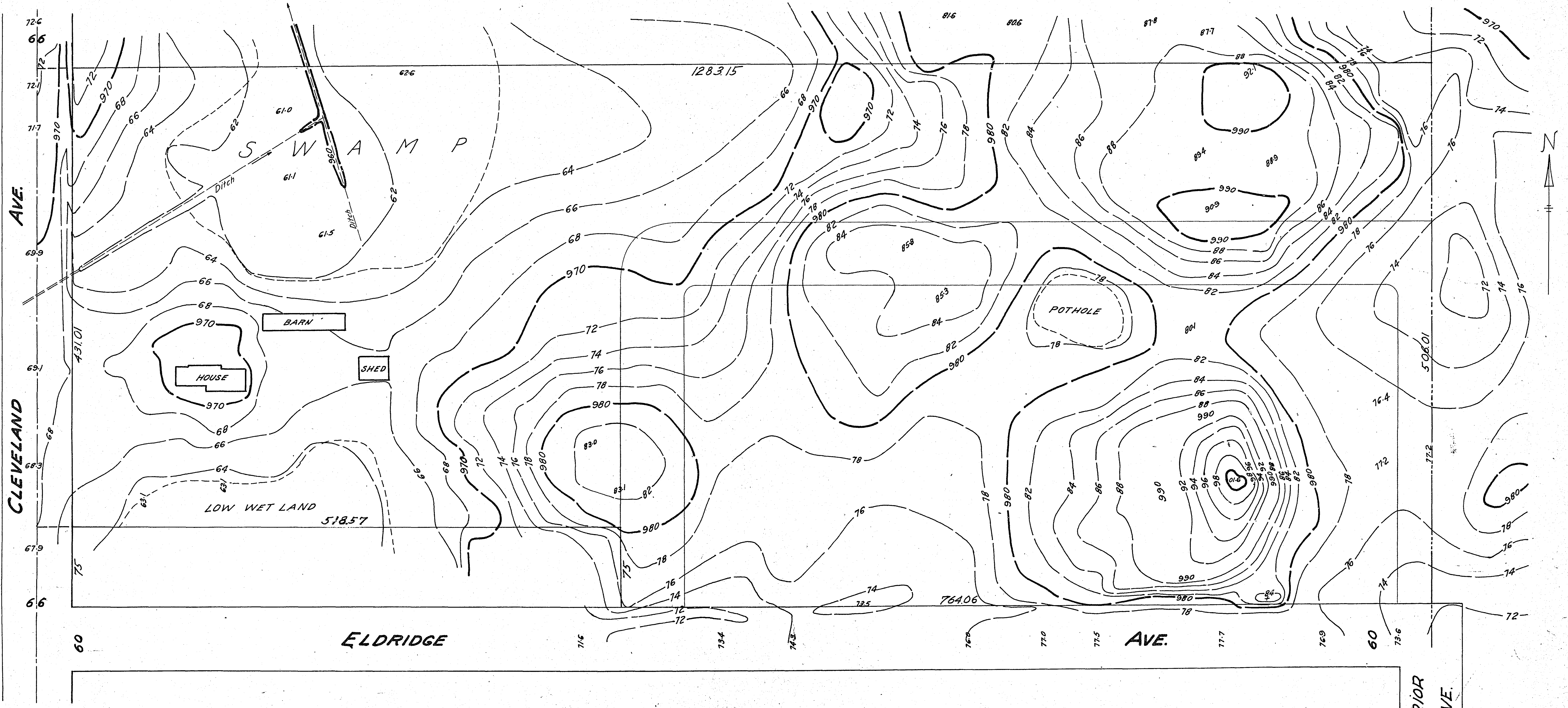
TOPOGRAPHICAL MAP
PART OF N.W. ¼ OF N.W. ¼ SEC. 16, T.29N, R.23W.

APRIL 16, 1954

SCALE-1 INCH=50 FEET

R.C. WOLFGAM

SURVEYOR



PROPOSED PLATTING
OF
SHARONDALE ADDITION No. 2
ROSEVILLE, MINN.

SCALE - 1" = 50 FT.
OCT. 8, 1956.

Gage
R.C. WOLFFRAM
SURVEYOR.

