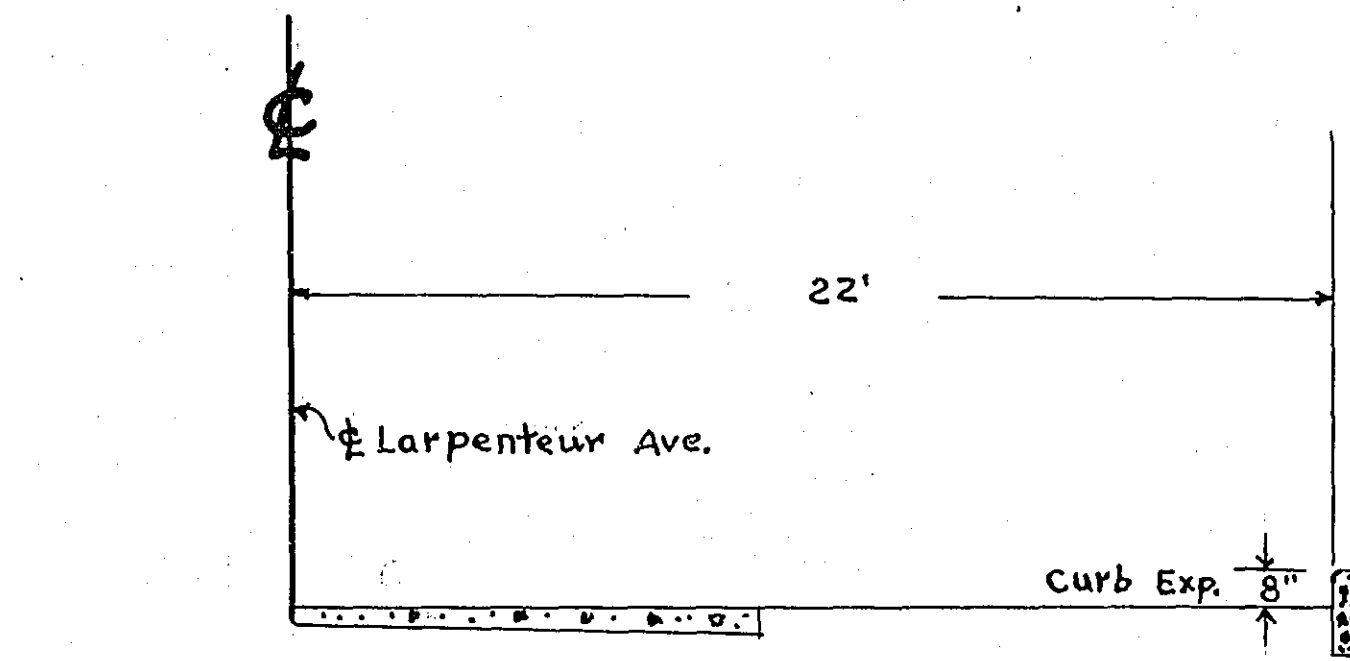
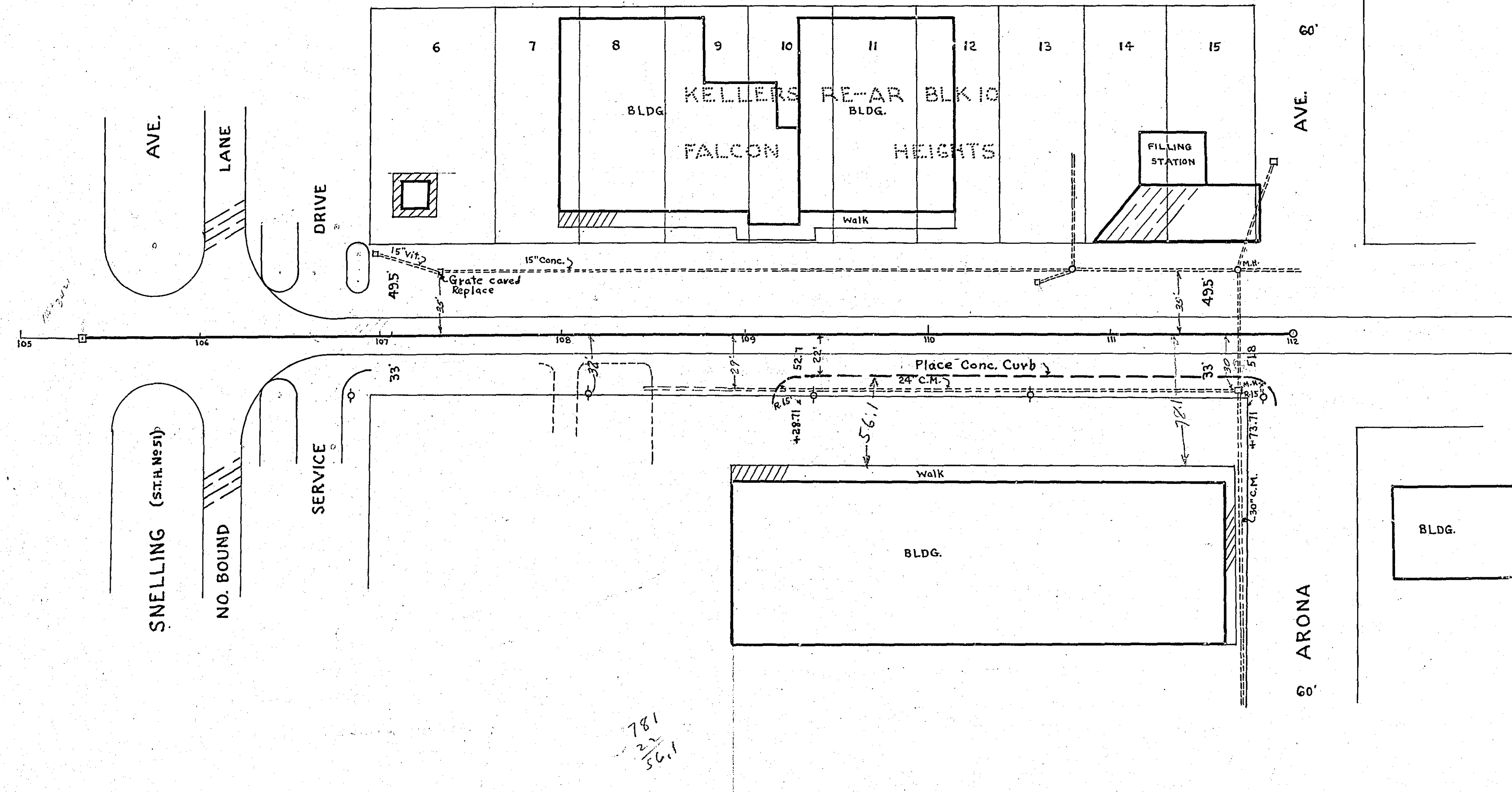


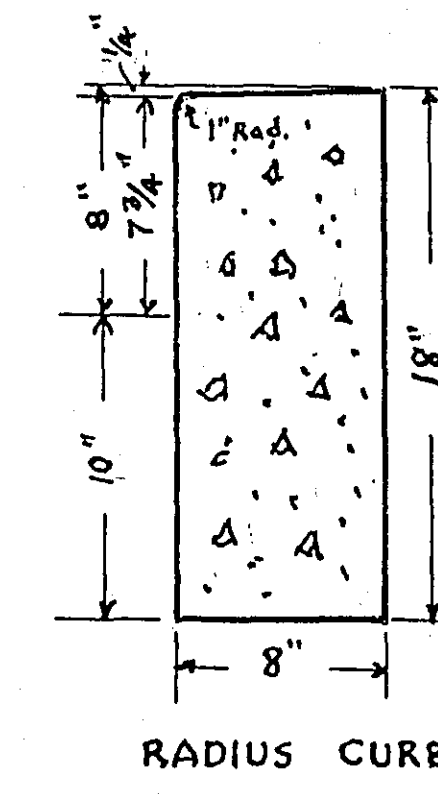
109+13.71 Rt. to 109+28.71 Rt.  
Pl. 23.56 Lin. Ft. Radius Curb

109+28.71 Rt. to 111+73.71 Rt.  
Pl. 24.5 Lin. Ft. Straight Curb

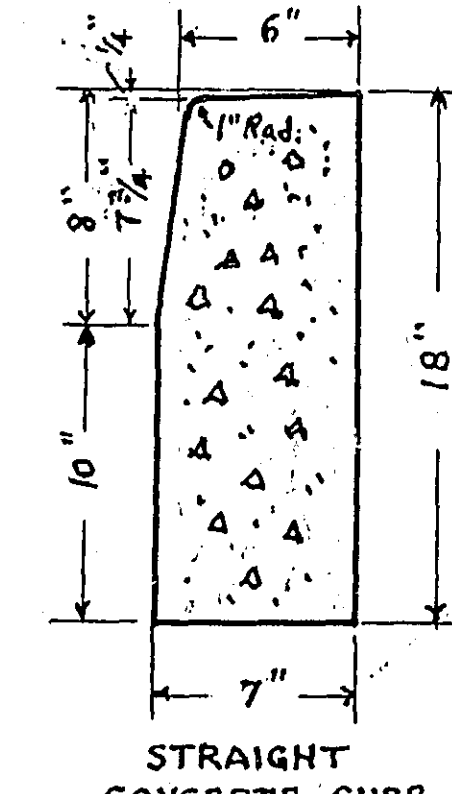
111+73.71 Rt. to 111+88.71 Rt.  
Pl. 23.56 Lin. Ft. Radius Curb



TYPICAL SECTION  
RT.  
Sta. 109+28.71 to Sta. 111+73.71



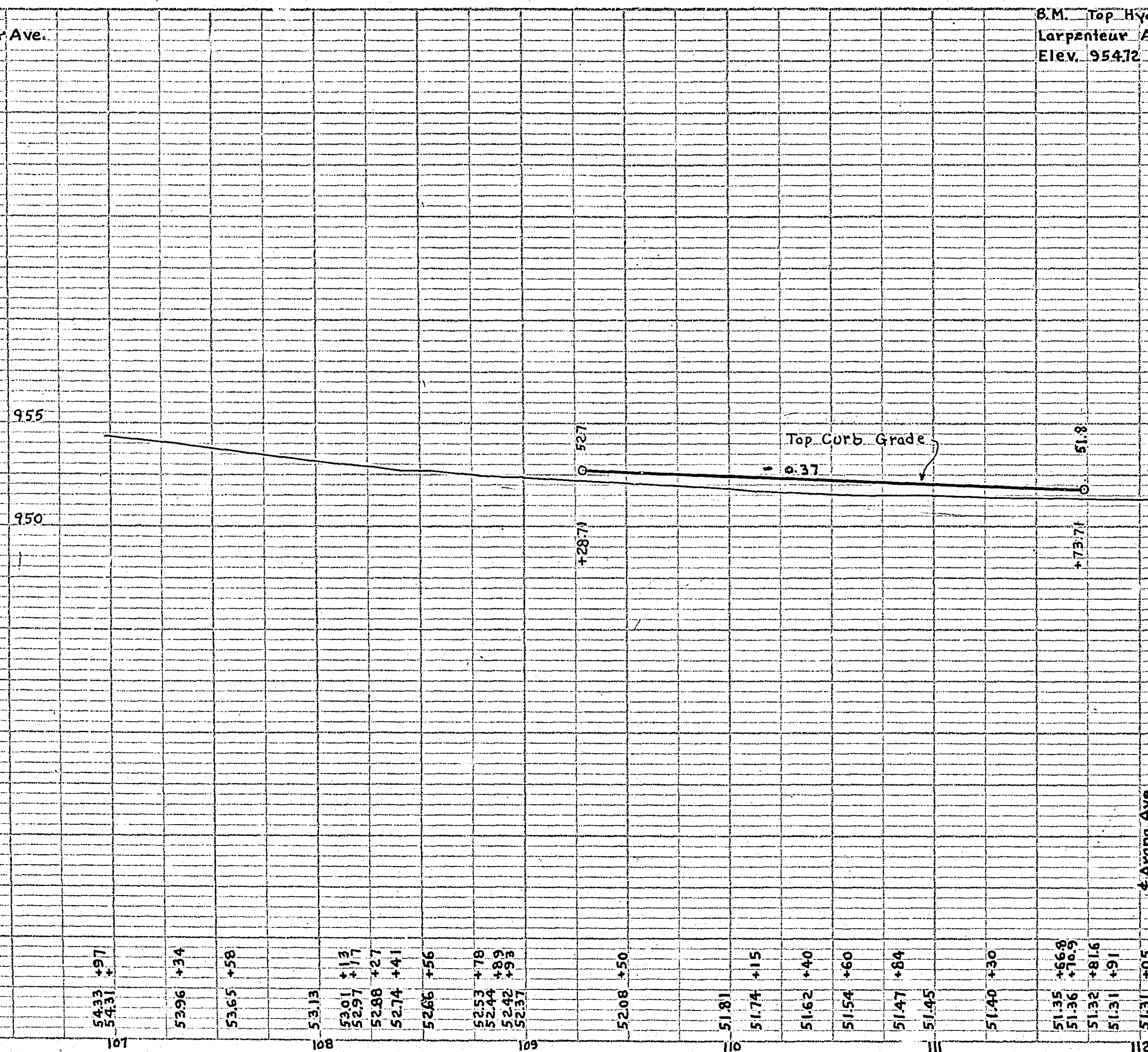
RADIUS CURB



STRAIGHT  
CONCRETE CURB

B.M. Top Hyd.  
Snelling Ave. & Larpenteur Ave.  
Elev. 958.05

B.M. Top Hyd. N.E. Cor.  
Larpenteur Ave. & Arona Ave.  
Elev. 954.72



ESTIMATED QUANTITIES

CONSTRUCT	STRAIGHT CURB	LIN. FT.	245
CONSTRUCT	RADIUS CURB	LIN. FT.	47

OFFICE OF  
RAMSEY COUNTY SURVEYOR  
HARRY S. BRONSON  
CURBING PLAN  
**LARPENTEUR AVENUE**  
SOUTH SIDE FROM ARONA AVE. TO 300' W.  
MAR. 1948 SCALE AS SHOWN

APPROVED *Harry S. Bronson*  
COUNTY ENGINEER

NO. OF HOLES CHECKED	DATE
HOLE BOOK	BY
BY	DATE

NO. OF HOLES CHECKED	DATE
HOLE BOOK	BY
BY	DATE

Sta. 108+44 Rt. 28.5' to Sta. 111+71 Rt. 31' Inp. 24" x 327' C.M. Remove

Sta. 108+80 Lt. 31.5' Const. C.B. Type No.1

Sta. 109+15 Rt. 31.5' Const. C.B. Type No.1

Sta. 109+15 Rt. 31.5' to Sta. 111+50 Rt. 31.5' F. & I. 15" x 230' C.M.

Sta. 110+60 Lt. 28' Remove Side Drain

Sta. 110+60 Lt. 28' to Sta. 110+80 Lt. 35' Remove Pipe Sewer

Sta. 112+47 Move Hyd. to 3' S. of Sidewalk

Sta. 113+88 Rt. 28' Inp. 12" x 8' Vit.

Sta. 114+57 Rt. 28' Inp. 12" x 8' Vit.

Sta. 115+84 Rt. 28' Inp. 15" x 7' Vit.

Sta. 106+90 Lt. Rem. Conc. Curb Around Island.

Sta. 107+845-0' to 9' Lt. Remove Signal Pressure Plate Reset at 4 1/2 to 12 1/2 Lt. Hwy. Dept. will rewire.

Sta. 110+75 Lt. 31.5' Const. C.B. Type No.1

Sta. 111+50 Rt. 31.5' Const. C.B. Type No.1

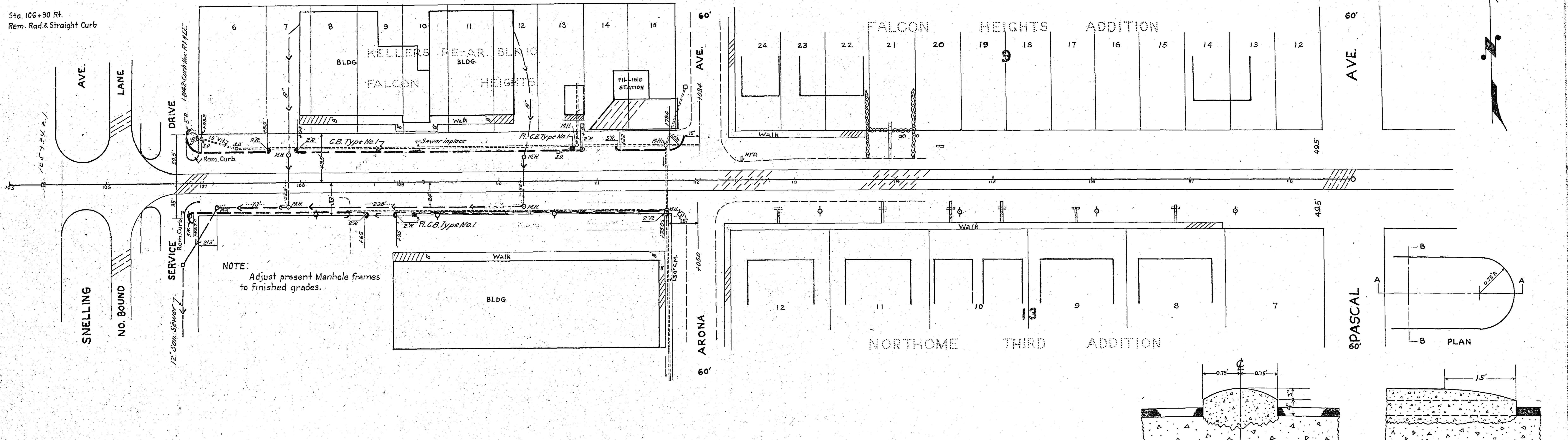
Sta. 111+50 Rt. 31.5' to Sta. 111+71 Rt. 31.5' F. & I. 15" x 18" C.M.

Sta. 112+83 Rt. 28' Inp. 15" x 8' Vit.

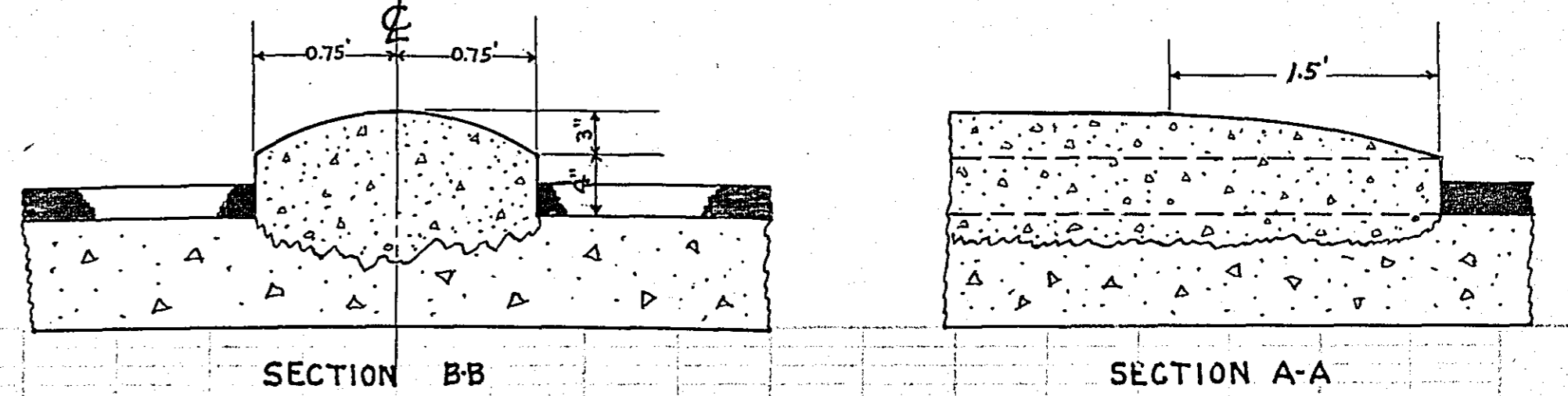
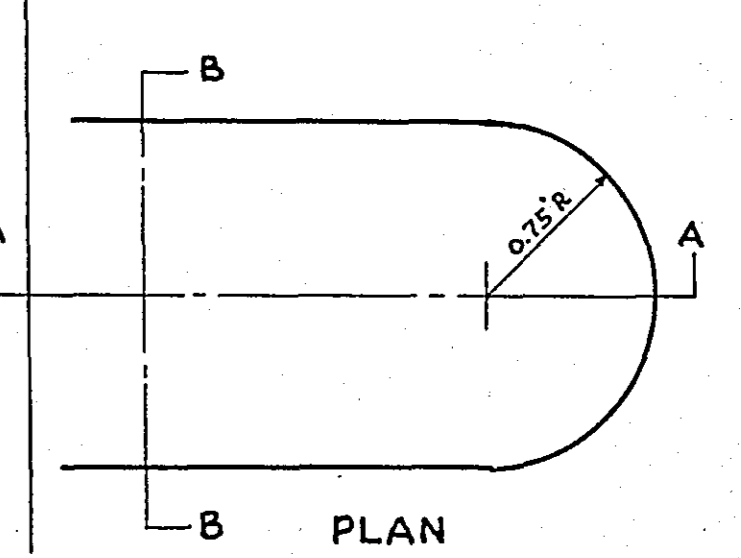
Sta. 114+46 Lt. 34' Inp. 12" x 8' Conc. Pipe

Sta. 115+08 Rt. 28' Inp. 12" x 8' Vit.

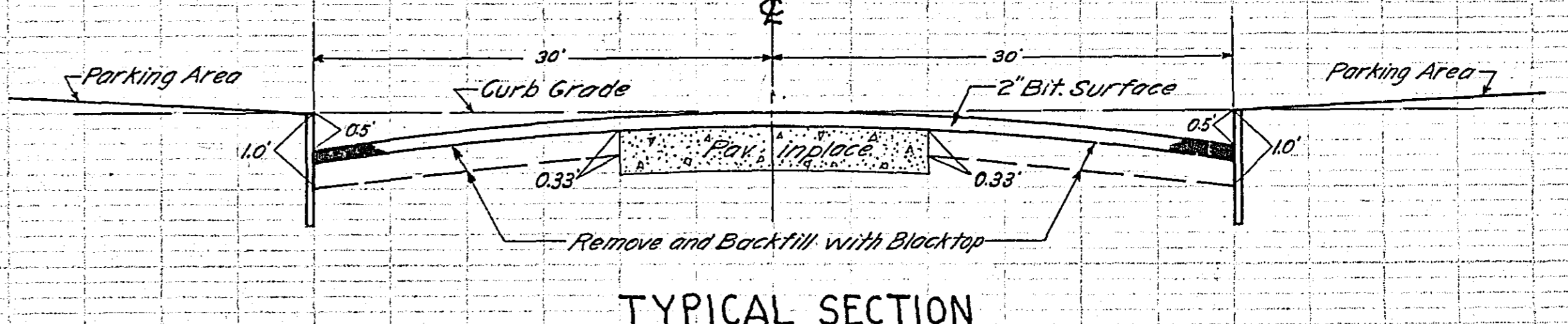
Sta. 116+84 Rt. 28' Inp. 15" x 7' Vit.



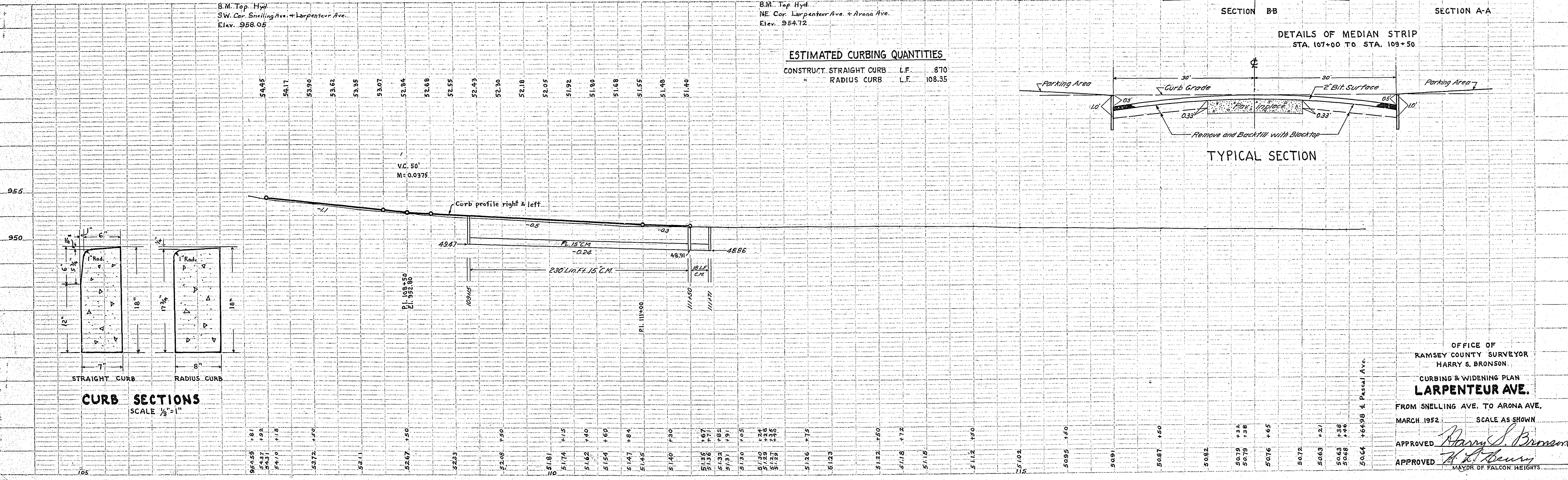
NOTE:  
Adjust present Manhole frames to finished grades.



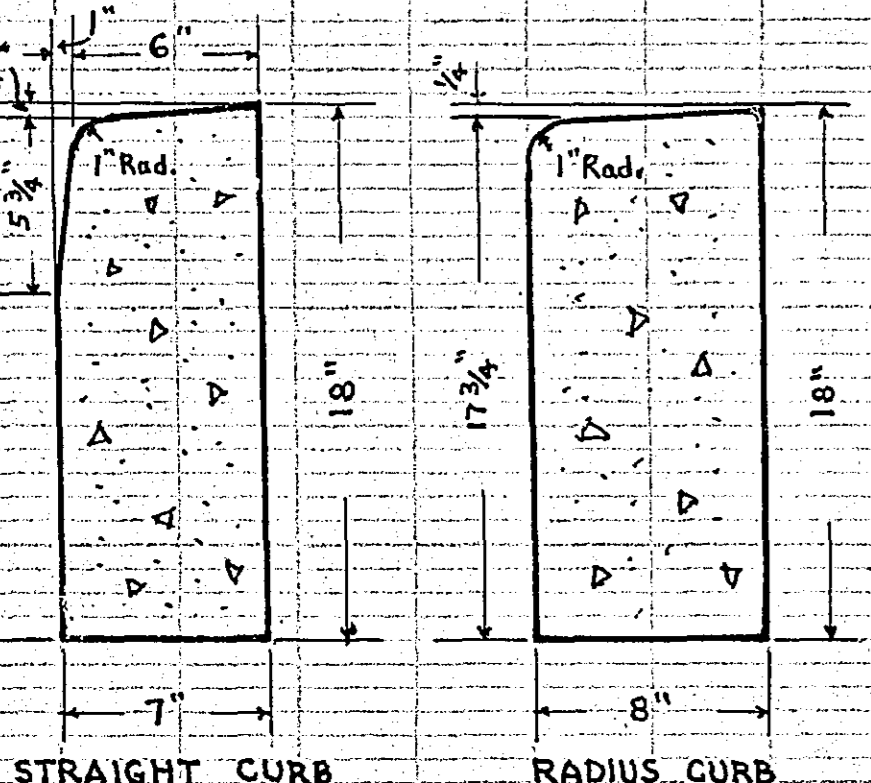
DETAILS OF MEDIAN STRIP  
STA. 107+00 TO STA. 109+50



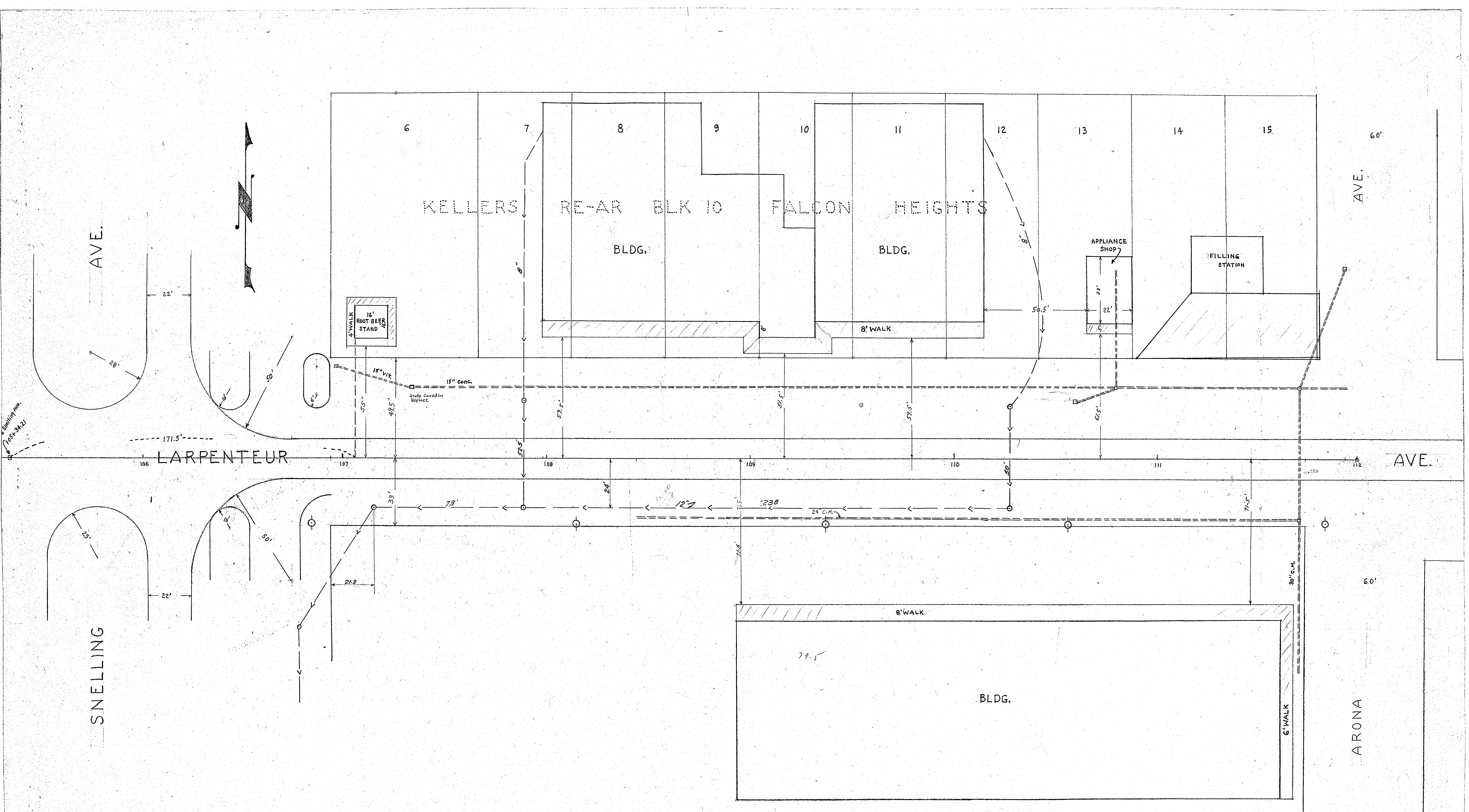
ESTIMATED CURBING QUANTITIES  
CONSTRUCT. STRAIGHT CURB L.F. 870  
RADIUS CURB L.F. 108.35



CURB SECTIONS  
SCALE 1/8" = 1"



OFFICE OF  
RAMSEY COUNTY SURVEYOR  
HARRY S. BRONSON  
CURBING & WIDENING PLAN  
**LARPENTEUR AVE.**  
FROM SNELLING AVE. TO ARONA AVE.  
MARCH 1952 SCALE AS SHOWN  
APPROVED *Harry S. Bronson*  
APPROVED *H. P. Burns*  
MAYOR OF FALCON HEIGHTS



OFFICE OF  
 RAMSEY COUNTY ENGINEER  
 HARRY S. BRONSON  
 LAYOUT MAP OF  
**LARPENTEUR AVE.**  
 FROM SNELLING AVE. TO ARONA AVE.  
 JUNE 1950 SCALE 1"=20'