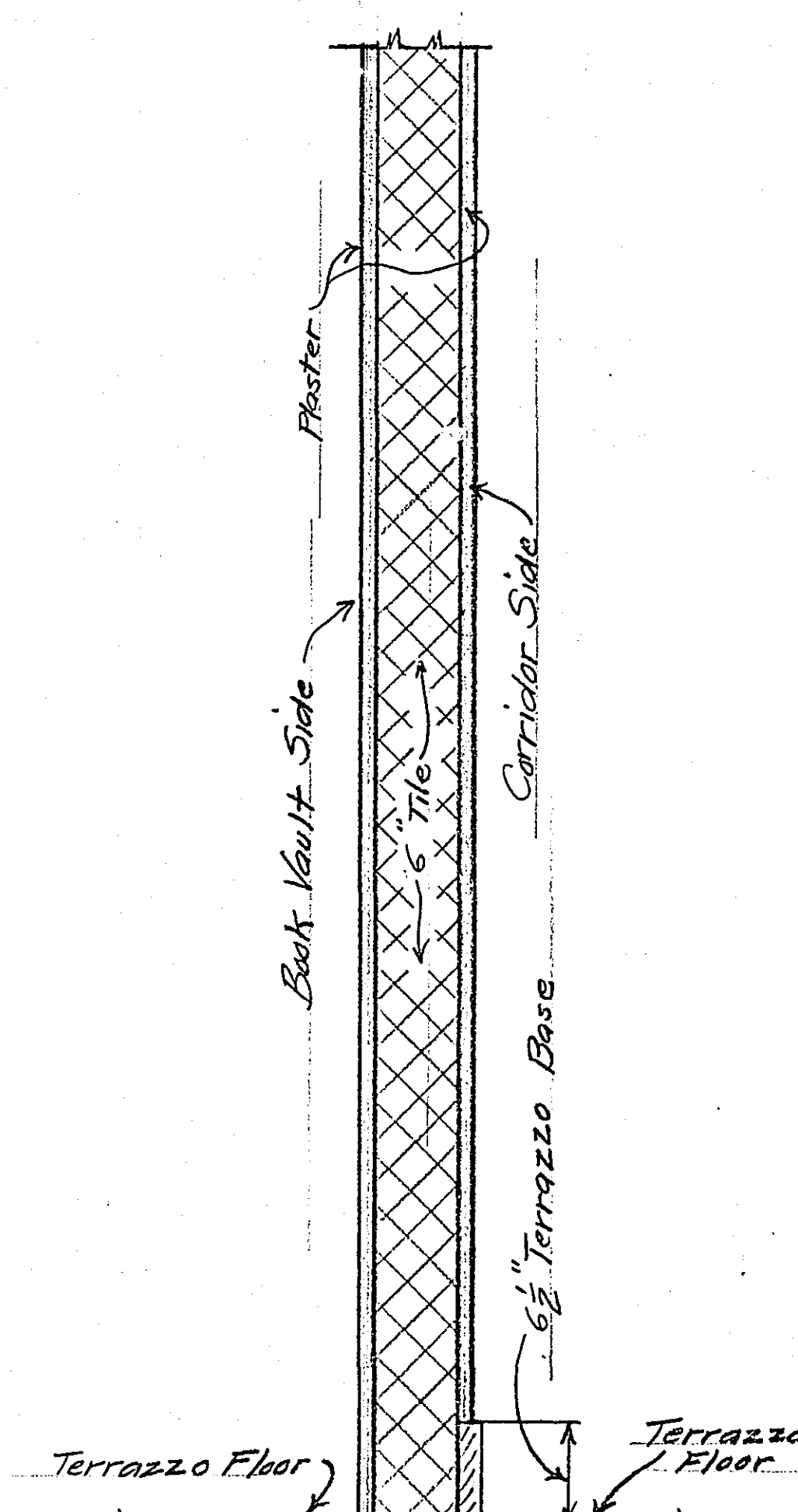
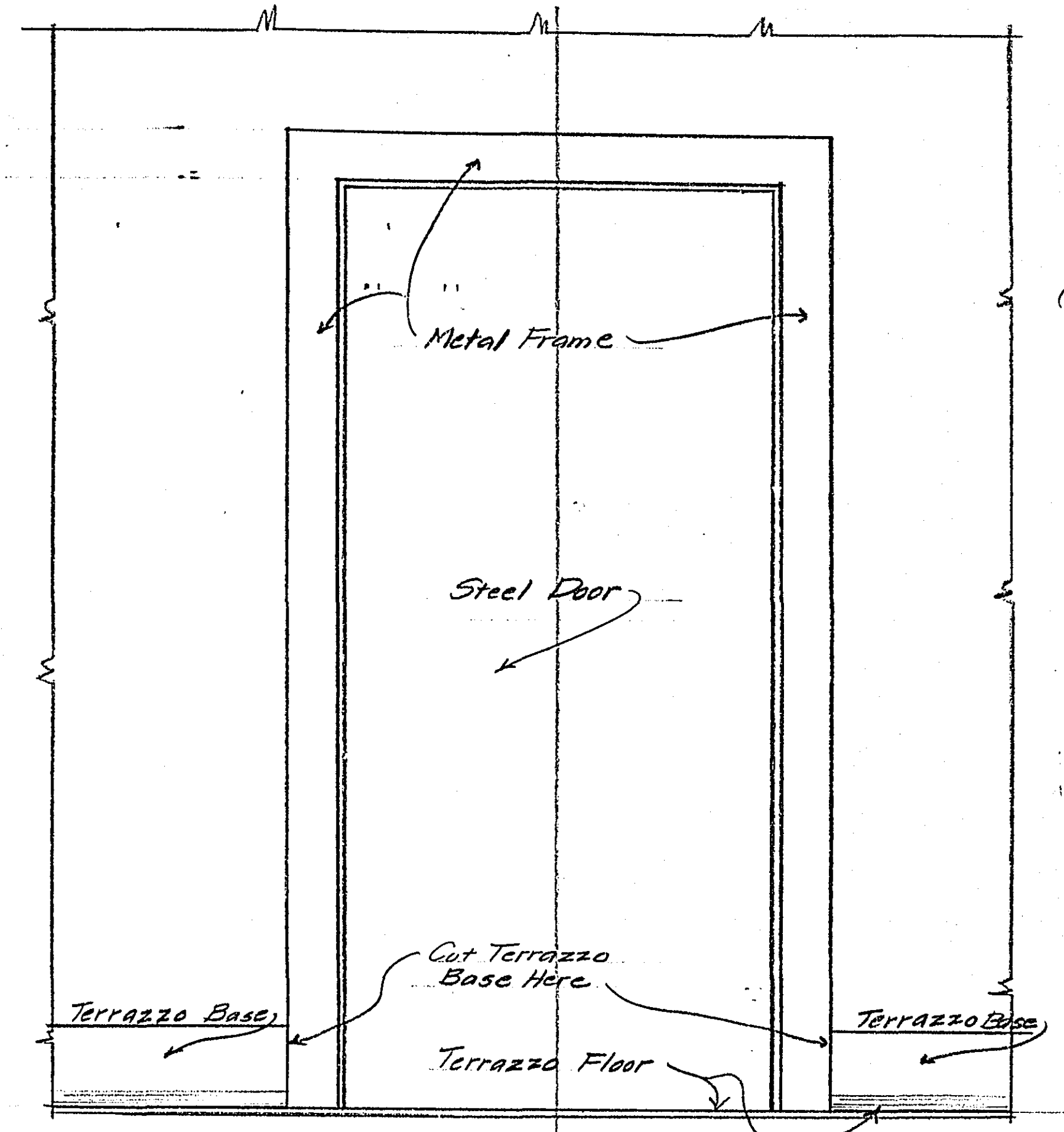


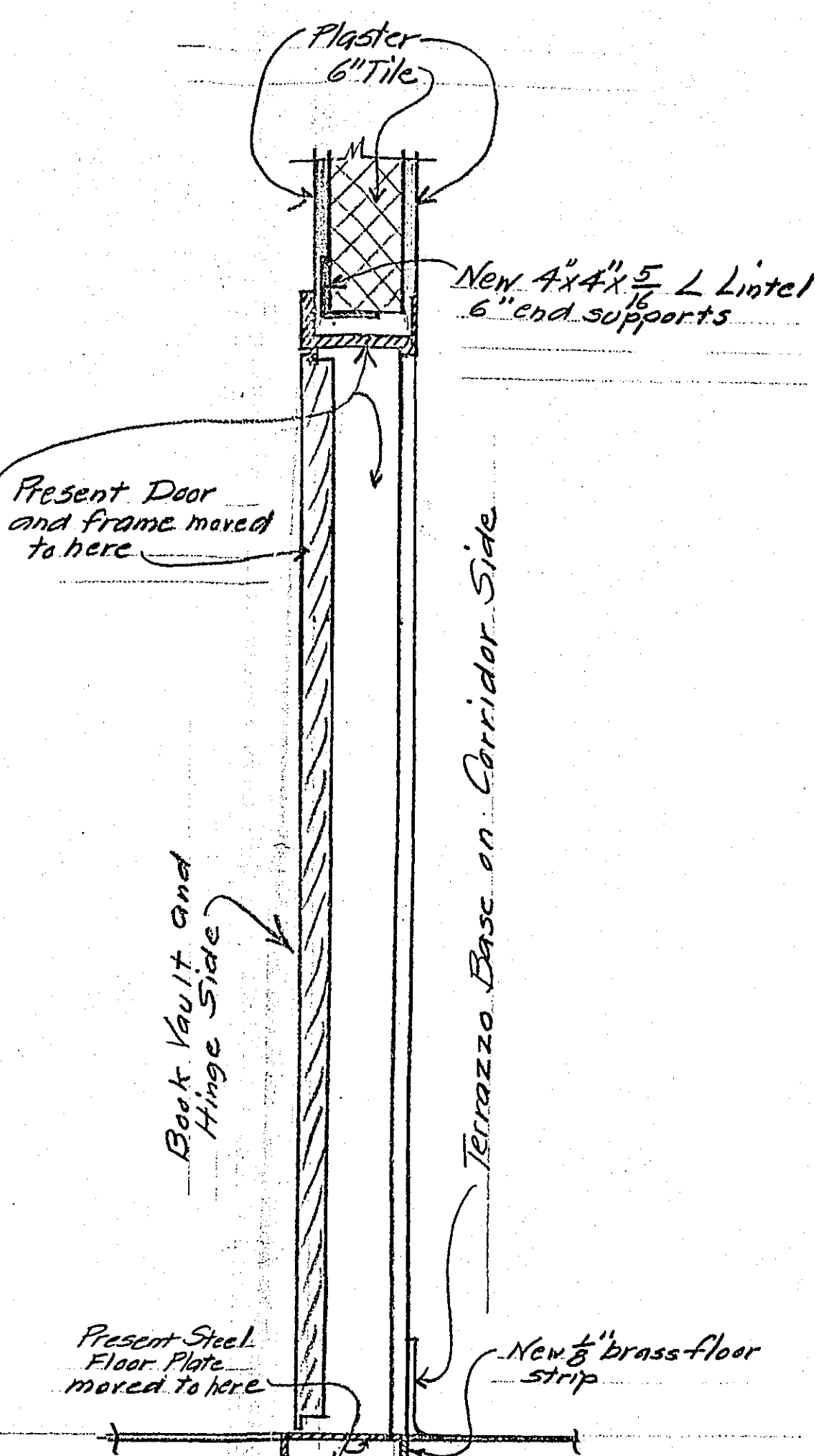
BASEMENT FLOOR PLAN SHOWING NEW LOCATION OF DOOR - SCALE 1/4"=1'-0"



PRESENT CONSTRUCTION OF PARTITION INTO WHICH NEW OPENING WILL BE CUT - VERTICAL SECTION - SCALE 1 1/2"=1'-0"



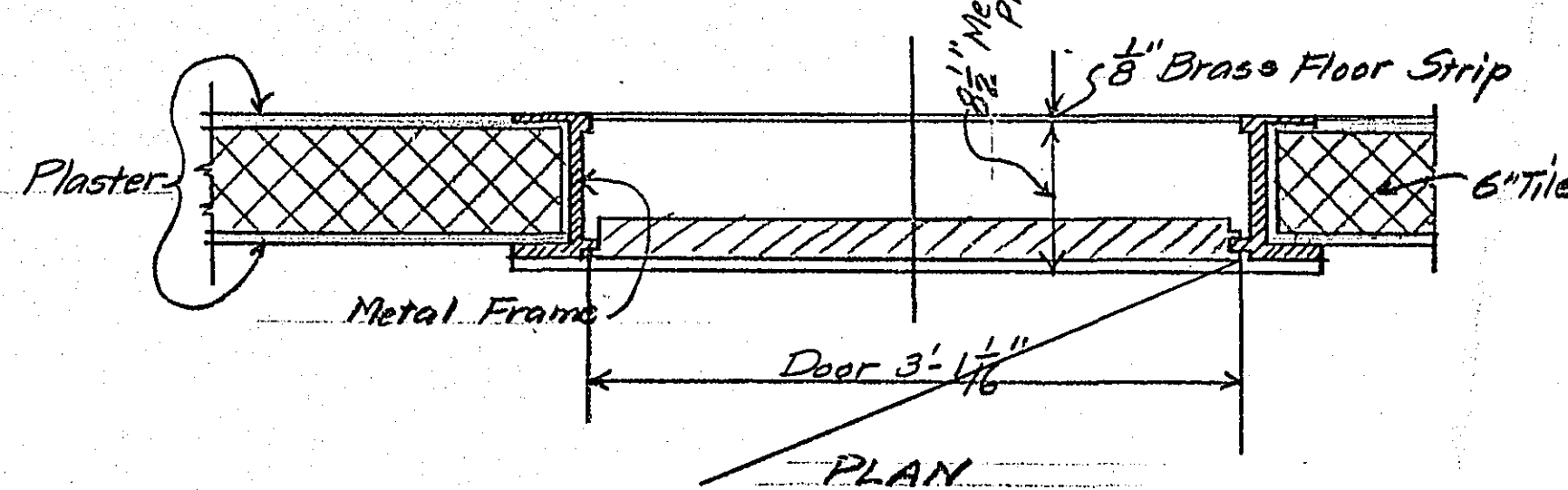
CORRIDOR ELEVATION OF DOOR AND FRAME AT NEW LOCATION



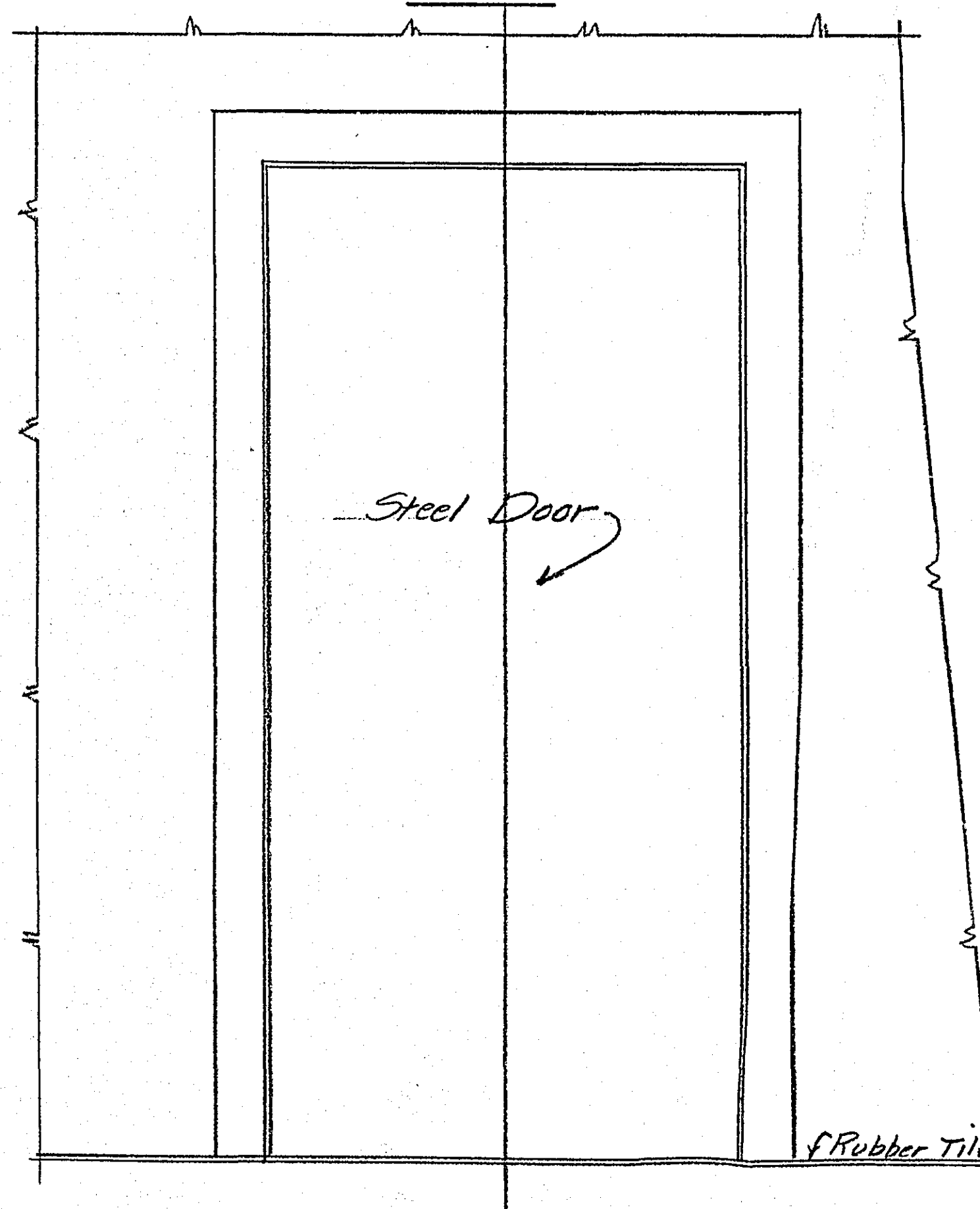
VERTICAL SECTION

Note: Elevation of Door and Frame on Book Vault and Hinge side is same as shown in Lower Left Hand Corner of this Sheet.  
Plan view of door in new location is same as shown in Lower Left Hand corner of this Sheet.

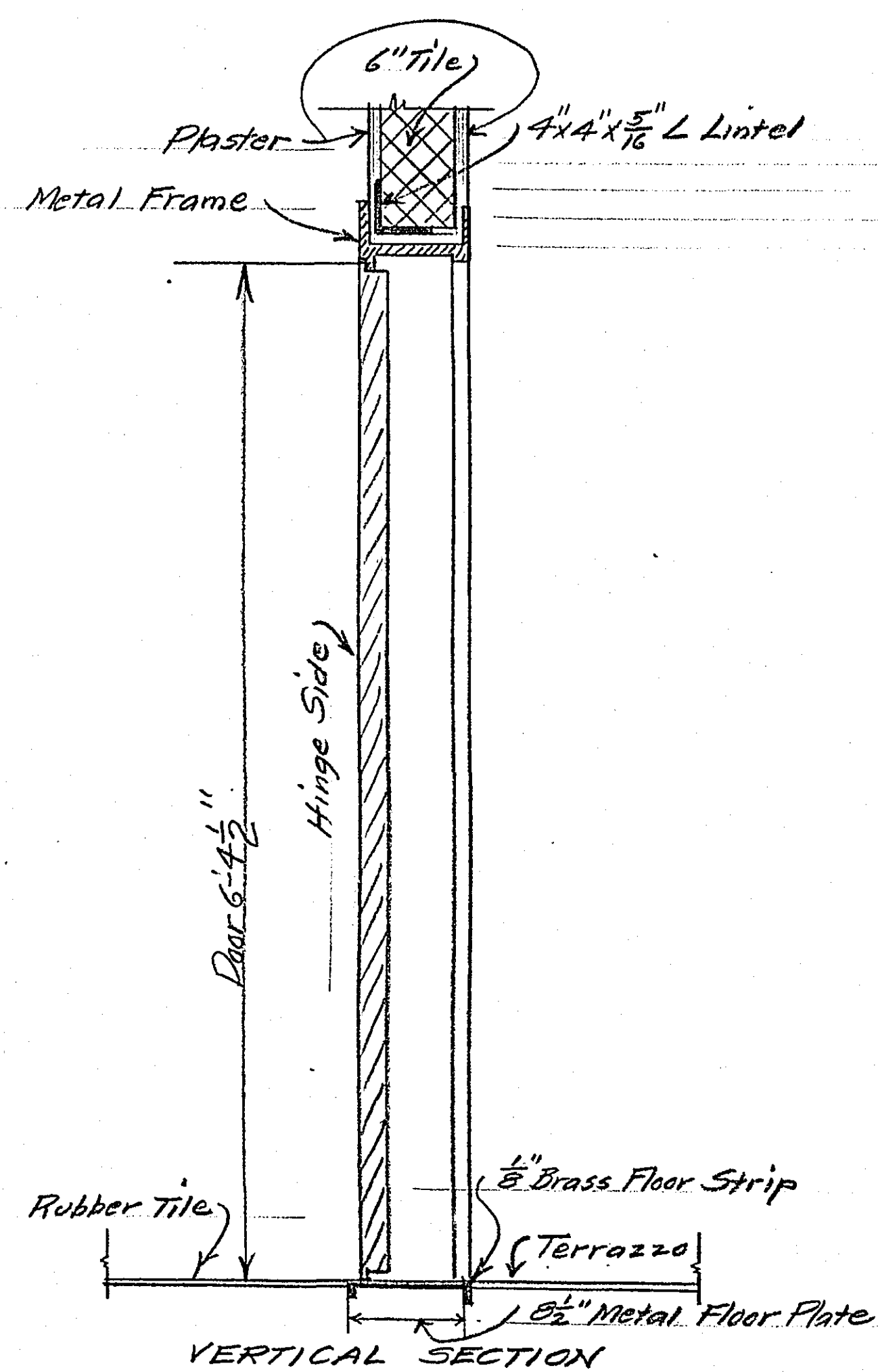
DETAILS OF DOOR AND FRAME IN NEW LOCATION - SCALE 1 1/2"=1'-0"



PLAN



ELEVATION ON HINGE SIDE



VERTICAL SECTION

DETAIL OF PRESENT FIRST FLOOR DOOR WHICH WILL BE TAKEN OUT AND MOVED TO NEW LOCATION IN BASEMENT - SCALE 1 1/2"=1'-0"

SPECIFICATIONS

WORK TO BE DONE:

Take out present steel door and frame from its present location on 1st floor at City Hall and Court House in Office of County Register of Deeds and place same in a new opening to be cut into partition between Corridor and Register of Deeds Book Vault in basement.

DETAIL COVERING PRESENT LOCATION ON 1ST FLOOR:

Remove present steel door and steel frame, including steel floor plate. Leave 3/8" brass floor strip in place. Leave present steel angle lintel in place. Make a plaster opening with a flat, horizontal head, with width of opening as near as possible to what it is at present. Wrap head and side jambs with metal lath and apply a 3 coat plaster job to head and side jambs. Do all necessary plaster patching so that new plaster will match present adjacent plaster on both sides of partition. Finish coat will be same as adjacent plaster. Install standard metal corner beads in all exposed corners. Patch floor after steel floor plate is removed and carry present rubber tile flooring into opening up to brass floor strip.  
Do not do any painting.

DETAIL COVERING NEW LOCATION IN BASEMENT:

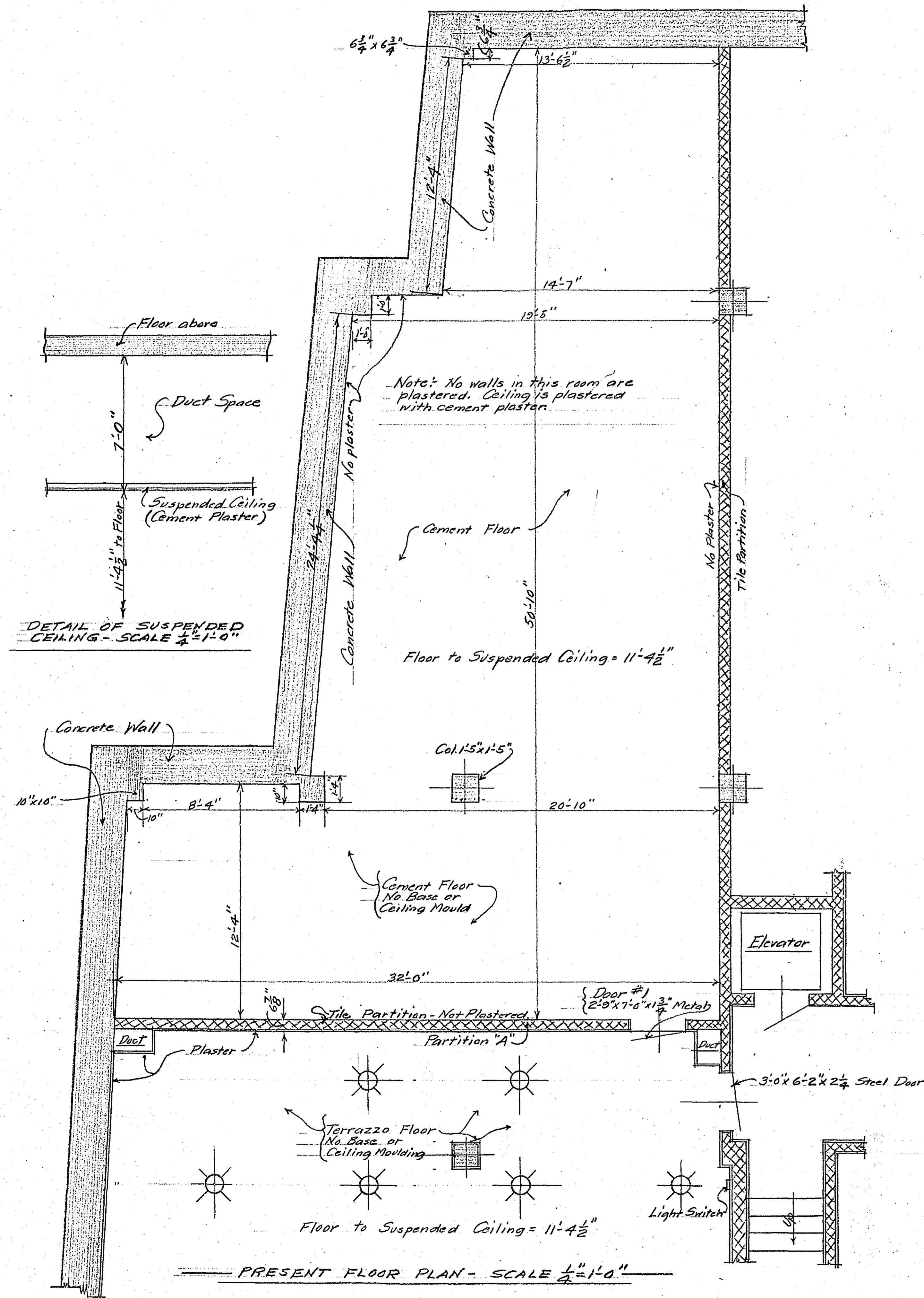
Where shown and noted on this sheet, cut a new opening in the present 6" tile and plastered basement partition and install therein the steel door, frame and floor plate taken from the 1st floor. All as shown and noted on this sheet. Install a new 4x4x5/8" angle lintel above opening and a new brass floor strip as shown and noted. Patch all plaster on both sides of partition, with finish coat matching present adjacent plaster. Cut off present terrazzo base on corridor side as shown on this sheet and patch terrazzo.  
Do not do any painting.

LOCATION:

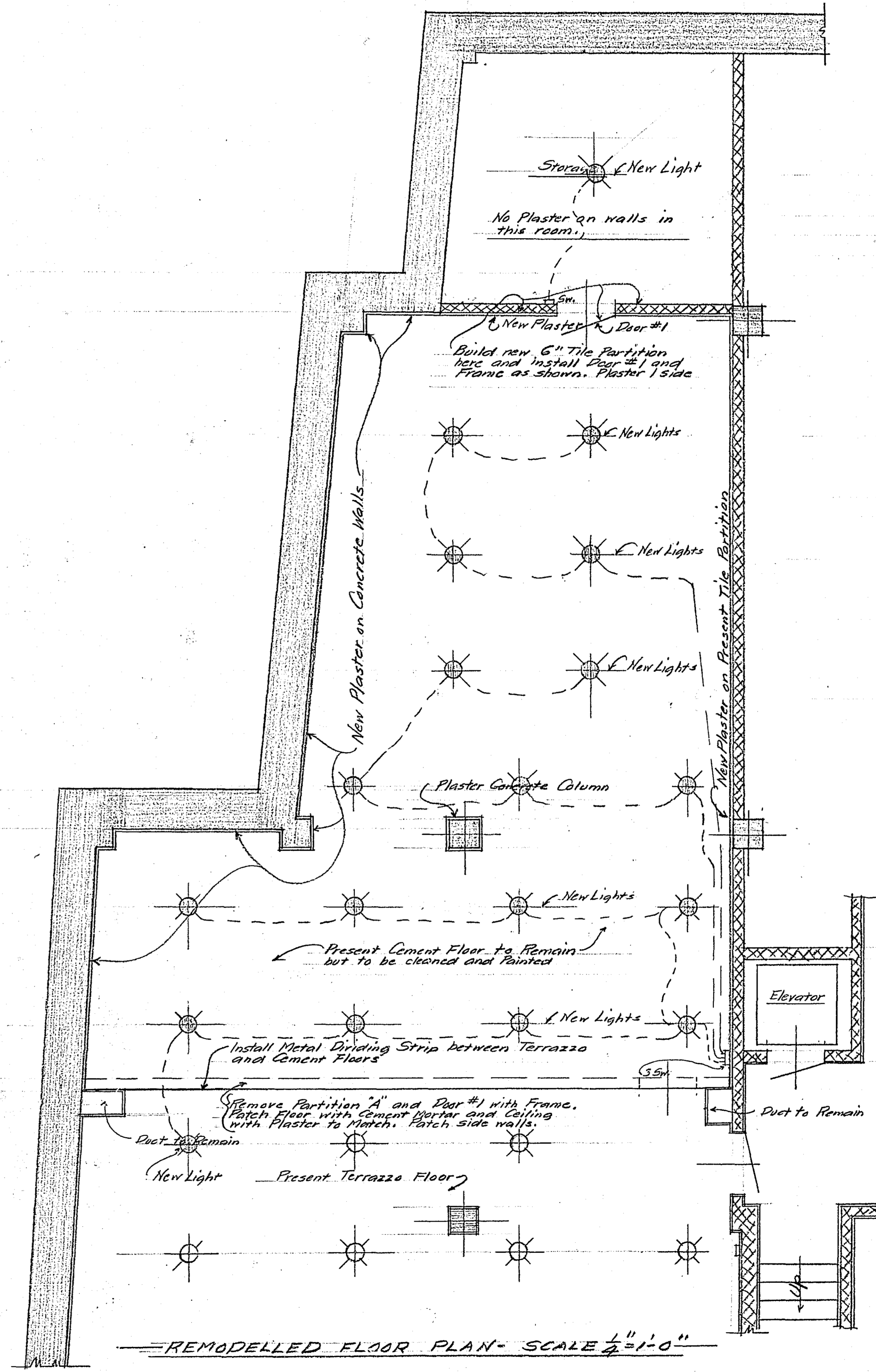
The approximate location of the new basement opening is shown on this sheet and this may be varied a short distance if necessary to miss any piping which may be present in the partition. However, the location will be as close as possible to midway between book case (A) and Wall (2). See plan on this sheet where 5'-0" dimension is shown.

PLAN AND DETAILS COVERING RE-LOCATION OF DOOR IN OFFICE OF RAMSEY COUNTY REGISTER OF DEEDS

Plans by H.S. Branson  
County Engineer - Reg. 818.  
St. Paul, Minn July 1952  
Scales Noted



PRESENT FLOOR PLAN - SCALE  $\frac{1}{4}''=1'-0''$



REMODELLED FLOOR PLAN - SCALE  $\frac{1}{4}''=1'-0''$

**WORK TO BE DONE**  
 Remove Tile Partition, "A" and Door #1 with Frame and patch Floor, Walls and Ceiling.  
 Install Metal Floor Strip between Terrazzo and Cement.  
 Plaster Walls as shown.  
 Frame around two Vent. Ducts and Plaster.  
 Install New Tile Partition where shown and install Door #1 therein.  
 Paint present Cement Floor.  
 Paint plaster walls and Ceiling to match present Office Partition.  
 Install New Lights on Ceiling where shown with wattage and fixtures same as in present Office Partition.

PLANS COVERING REMODELLING  
 WORK TO BE DONE IN BASEMENT  
 OF OFFICE OF REGISTER OF DEEDS,  
 COURT HOUSE AND CITY HALL  
 ST. PAUL, MINN.  
 JANUARY 1947 - SCALE  $\frac{1}{4}''=1'-0''$   
 H. S. BRONSON, COUNTY ENGINEER, DEL.