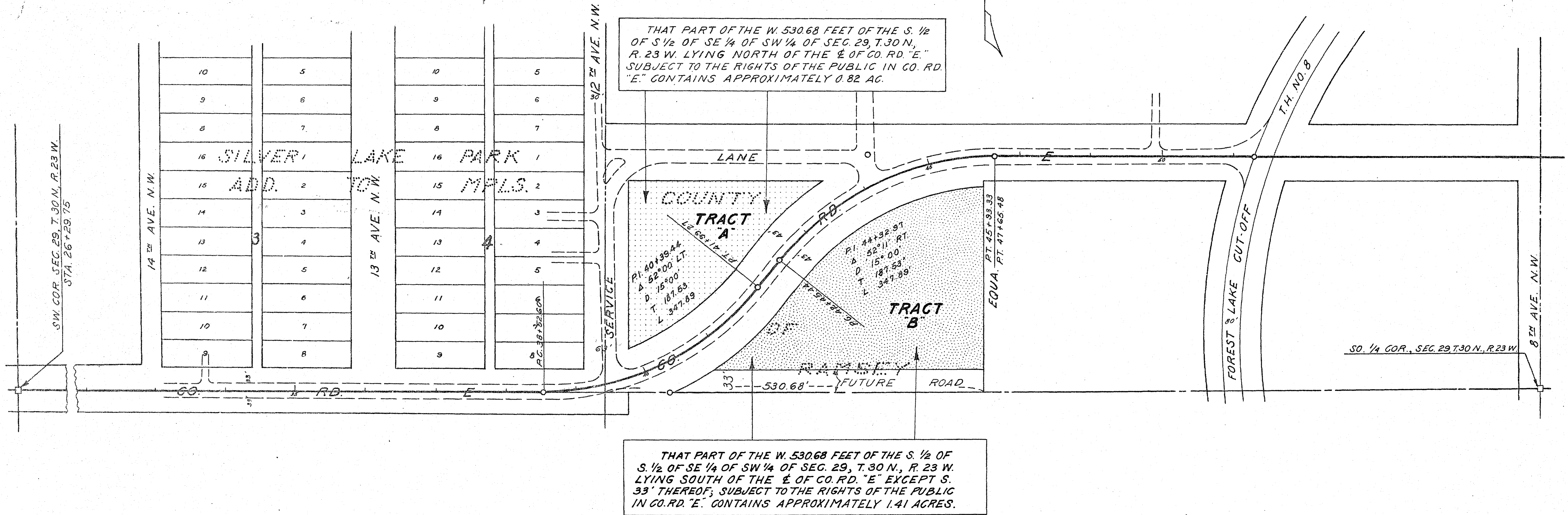


OFFICE OF
 RAMSEY COUNTY ENGINEER
 DEANE R. ANKLAN, COUNTY ENGINEER
RAMSEY COUNTY PROPERTY (NIXON PROPERTY)
CO. RD. "E" - WEST OF FOREST LAKE CUT-OFF (T.H. 8)
 SCALE: 1" = 100'
 JULY, 1962



THAT PART OF THE W. 530.68 FEET OF THE S. 1/2 OF S. 1/2 OF SE 1/4 OF SW 1/4 OF SEC. 29, T. 30 N., R. 23 W. LYING NORTH OF THE E. OF CO. RD. "E." SUBJECT TO THE RIGHTS OF THE PUBLIC IN CO. RD. "E." CONTAINS APPROXIMATELY 0.82 AC.

THAT PART OF THE W. 530.68 FEET OF THE S. 1/2 OF S. 1/2 OF SE 1/4 OF SW 1/4 OF SEC. 29, T. 30 N., R. 23 W. LYING SOUTH OF THE E. OF CO. RD. "E" EXCEPT S. 33' THEREOF; SUBJECT TO THE RIGHTS OF THE PUBLIC IN CO. RD. "E." CONTAINS APPROXIMATELY 1.41 ACRES.