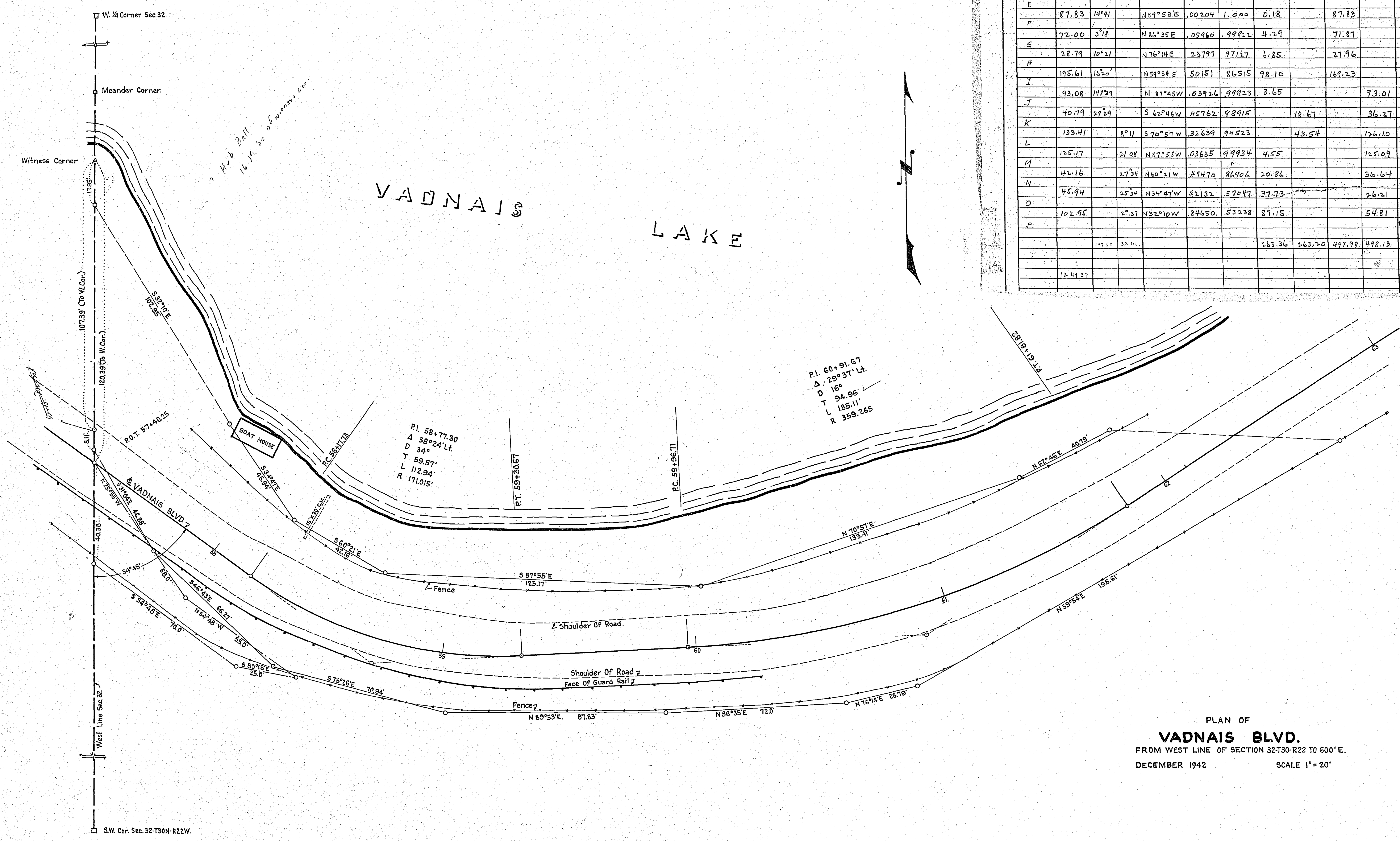


Vadna's Blvd.

LATITUDE & DEPARTURE CHART

Sta.	Dist.	Deflection		Course	Natural Functions		Latitude		Departure		Totals	
		L	R		Cosine	Sine	+N	-S	+E	-W	Latitude	Departure
A	97.55	0	0	S 0° 00' E	1.000	0.000	97.55	0			97.55	0
B	46.88	31 04		S 31° 04' E	.85657	.51604	40.16	24.19			137.71	24.19
C	66.27	15 39		S 46° 43' E	.68561	.72797	45.44	48.24			183.15	72.43
D	70.94	28 43		S 75° 26' E	.25151	.96786	17.84	68.66			200.99	141.09
E	87.83	14 41		N 89° 53' E	.00204	1.000	0.18	87.83			200.81	228.92
F	72.00	3 18		N 86° 35' E	.05960	.99822	4.29	71.87			196.52	300.79
G	28.79	10 21		N 76° 14' E	.23797	.97127	6.85	27.96			189.67	328.75
H	195.61	16 30		N 59° 54' E	.50151	.86515	98.10	169.23			91.57	497.98
I	93.08	147 29		N 87° 45' W	.03926	.99923	3.65		93.01		87.92	404.97
J	40.79	29 29		S 62° 46' W	.45762	.88915		18.67		36.27	106.59	368.70
K	133.41	8 11		S 70° 57' W	.32639	.94523		43.54		126.10	150.13	242.60
L	125.17	21 08		N 87° 55' W	.03635	.99934	4.55		125.09		145.58	117.51
M	42.16	27 34		N 60° 21' W	.49470	.86906	20.86		36.64		124.72	80.87
N	45.94	25 34		N 34° 47' W	.82132	.57047	37.73		26.21		86.99	54.66
O	102.95	2 37		N 32° 10' W	.84650	.53238	87.15		54.81		0.16	-0.15
P												
								263.36	263.20	497.98	498.13	
	124.37											



PLAN OF  
**VADNA'S BLVD.**  
 FROM WEST LINE OF SECTION 32-T30-R22 TO 600' E.  
 DECEMBER 1942 SCALE 1" = 20'