

CONVENTIONAL SIGNS & ABBREVIATIONS

STATE LINE	-----	EXCAVATION	-----	F
COUNTY LINE	-----	EMBANKMENT	-----	F
TOWNSHIP LINE	-----	OVERHAUL	-----	H
SECTION LINE	-----	SURFACING	-----	S
CITY, VILLAGE, OR BOROUGH	-----	GUARD RAIL	-----	GR
FENCE LINE	-----	INTERSECTION ANGLE	-----	A
RIGHT-OF-WAY LINE	-----	RADIUS	-----	R
TRAVELLED WAY	-----	ELEVATION	-----	EI
RAILROADS	-----	VERTICAL CURVE	-----	VC
RETAINING WALL	-----	BENCH MARK	-----	B.M.
BASE OR SURVEY LINE	-----	SECTIONAL CONCRETE CULVERT	-----	P.C.
LEVEE	-----	CORRUGATED METAL CULVERT	-----	C.M.
GRAVEL PIT	-----	CULVERT HAUL	-----	P.H.
SAND PIT	-----	TEN MILES	-----	T.M.
CLAY PIT	-----	PLACE	-----	P
ROCK QUARRY	-----	IN PLACE	-----	INP
CULVERTS	-----	REPLACE	-----	REP
PLAIN	-----	RIGHT	-----	R
WITH FACE WALLS	-----	LEFT	-----	L
WITH WING WALLS	-----	HAND DITCHING	-----	H.D.
DROP INLET	-----	POINT OF CURVE	-----	P.C.
POWER POLE LINE	-----	POINT OF TANGENT	-----	P.T.
TELEPHONE OR TELEGRAPH LINE	-----	POINT OF INTERSECTION	-----	P.I.
MARSH	-----	SPECIAL EXCAVATION	-----	S.E.
HERD, BUSH, OR TIMBER	-----	SPECIAL FLOWING	-----	S.P.
GROUND ELEVATION	-----	TELEPHONE POLE	-----	TEL.P.
GRADE ELEVATION	-----			

OFFICE OF COUNTY SURVEYOR

RAMSEY COUNTY

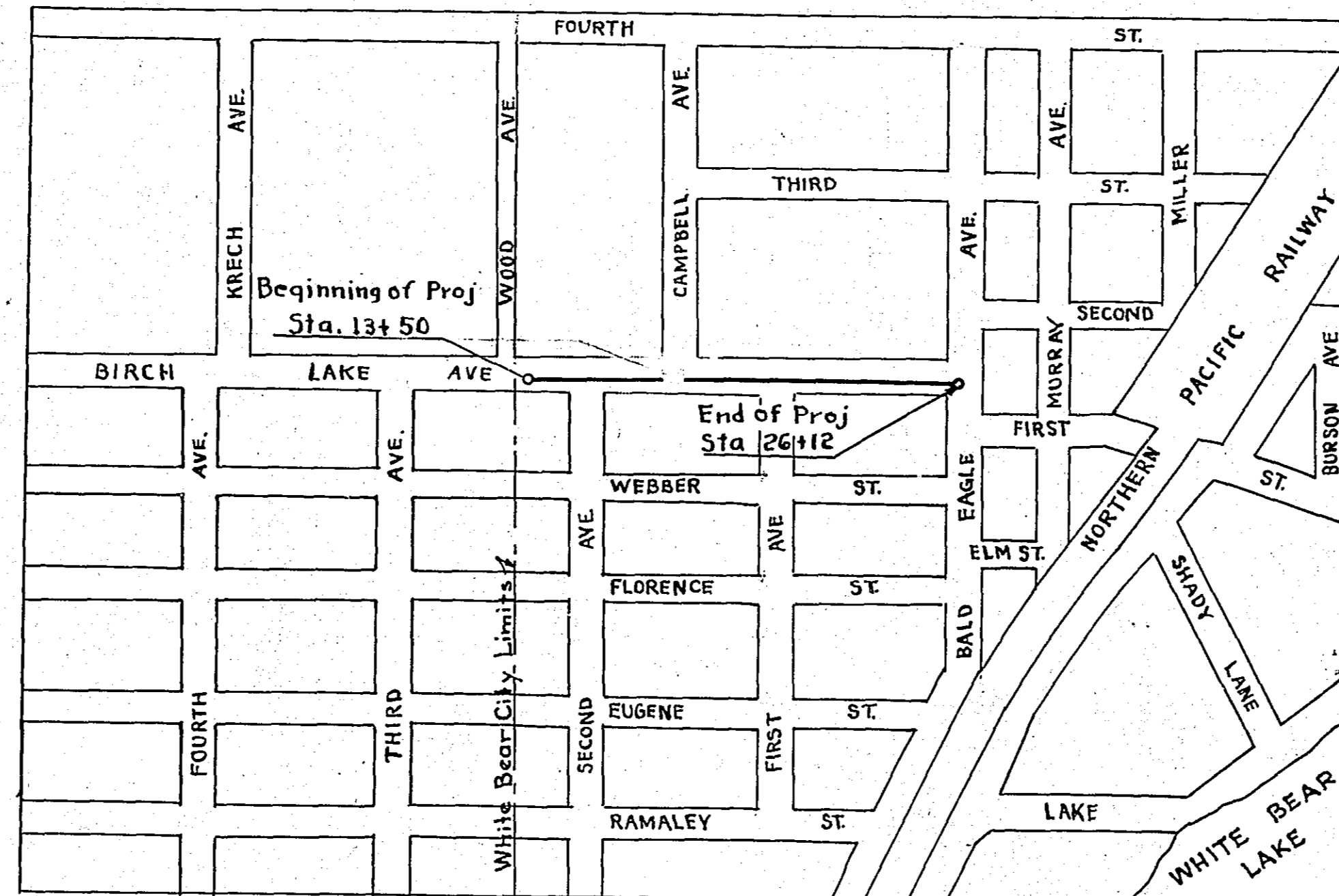
Plan and Profile of County Project No. 47-W.B.1

From Wood Avenue To Bald Eagle Ave.

GROSS LENGTH 1262 FEET 0.24 MILES
 LENGTH OF EXCEPTIONS 0 FEET 0 MILES
 NET LENGTH 1262 FEET 0.24 MILES
 PLAN, 1 inch = 50 Feet
 PROFILE, Horz. 1 inch = 50 Feet, Vert. 1 inch = 5 Feet
 WORKING PLANS { Horz. 1 inch = 100 Feet
 Vert. 1 inch = 10 Feet
 Cross-Sections, 1 inch = Feet
 LAYOUT
 SCALE, 1 inch = 450 Feet

INDEX OF SHEETS

Sheet No. 1. Title Sheet and Layout Map
 " No. 2. Typical Cross-Sections and Statement
 " No. 3. Plan and Profile, Sta. 13+50 to Sta. 26+12
 " No. 4. Manhole and Catch Basin Details



CITY OF WHITE BEAR LAKE

Date of Resolution for Preparation of Plans August 12 1942

Planned by A.D. Crampton ASSISTANT ENGINEER

Recommended for Approval J.P. McLeod ASSISTANT ENGINEER

Plans Approved and Recommended for Consideration [Signature] COUNTY SURVEYOR

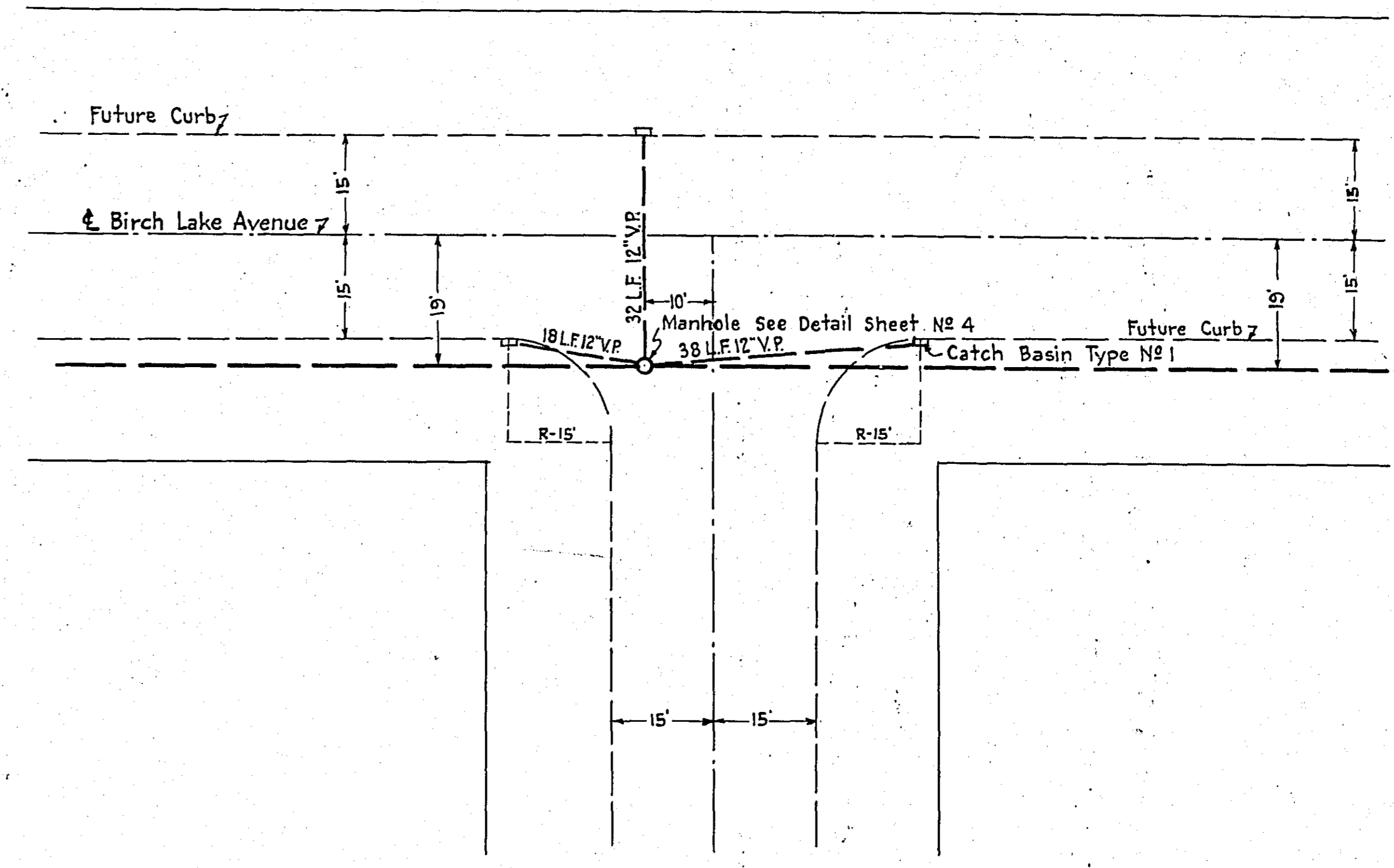
Approved [Signature] 1942 MAYOR CITY OF WHITE BEAR LAKE

Approved by County Board [Signature] CHAIRMAN OF COUNTY BOARD

STATEMENT OF ESTIMATED QUANTITIES

CLASS	ITEM	UNIT	MILE From To	MILE From To	MILE From To	MILE From To	MILE From To	MILE From To	MILE From To	MILE From To	MILE From To	MILE From To	TOTAL ESTIMATED QUANTITIES
GRADING	1	Clearing	Trees										
	2	Grubbing	Trees										
	3	Clearing	Acres										
	4	Grubbing	Acres										
	5	Excavation Earth	Cu. Yds.										
	6	Excavation Loose Rock	Cu. Yds.										
	7	Excavation Solid Rock	Cu. Yds.										
	8	Excavation Overhaul	Cu. Yds.										
	9	Excavation Special	Cu. Yds.										
	10	Excavation Hand Ditch	Cu. Yds.										
	11	Install 12" C.M.	Lin. Ft.										
	12	Install 15" C.M.	Lin. Ft.										
	13	Install 18" C.M.	Lin. Ft.										
	14	Install 24" C.M.	Lin. Ft.										
	15	Install	Lin. Ft.										
	16	Install	Lin. Ft.										
	17	Install 18" Ps	Lin. Ft.										
	18	Install 24" Ps	Lin. Ft.										
	19	Install 30" Ps	Lin. Ft.										
	20	Install 36" Ps	Lin. Ft.										
	21	Install	Lin. Ft.										
	22	Install	Lin. Ft.										
	23	Remove Old Culvert	Lin. Ft.										
	24	Replace Old Culvert	Lin. Ft.										
	25	Finishing and Seeding	100 Sq.Yds.										
	26	Rubble Gutter	Cu. Yds.										
	27	Headwall Concrete	Cu. Yds.										
	28	Headwall Steel	Lbs.										
	29												
	30												
	31												
	32												
C.M. CULVERTS	1	Furnish 12" C.M.	Lin. Ft.										
	2	Furnish 15" C.M.	Lin. Ft.										
	3	Furnish 18" C.M.	Lin. Ft.										
	4	Furnish 24" C.M.	Lin. Ft.										
	5	Furnish	Lin. Ft.										
	6	Furnish	Lin. Ft.										
	7	Furnish 12" C.M. Band	Each										
	8	Furnish 15" C.M. Band	Each										
	9												
	10												
P3 CULVERTS	1	Furnish 18" P3	Lin. Ft.										
	2	Furnish 24" P3	Lin. Ft.										
	3	Furnish 30" P3	Lin. Ft.										
	4	Furnish 36" P3	Lin. Ft.										
	5												
GUARD RAIL	1	Guard Rail - Cable	Lin. Ft.										
	2	Guard Rail Anchors	Each										
	3	Dummy Posts	Each										
	4												
SIDEWALKS AND CURBING	1	Concrete Curb - Straight	Lin. Ft.										
	2	Concrete Curb - Radius	Lin. Ft.										
	3	Remove Old Curb	Lin. Ft.										
	4	Remove Old Curb and Gutter	Lin. Ft.										
	5	Remove Old Sidewalk	Sq. Ft.										
	6	Replace Old Sidewalk	Sq. Ft.										
	7	Construct New Sidewalk	Sq. Ft.										
	8	Curb Inlet	Each										
	9	Catch Basin Complete	Each										
	10												
	11												
	12												
SEWER	1	Furn. & Install 12" Vit. Sewer Pipe	Lin. Ft.	370									
	2	Furn. & Install 15" Vit. Sewer Pipe	Lin. Ft.	1242									
	3	18" Vitrified Sewer Pipe	Lin. Ft.										
	4	20" Vitrified Sewer Pipe	Lin. Ft.										
	5	24" Vitrified Sewer Pipe	Lin. Ft.										
	6	Manhole Complete	Each	6									
	7	Catch Basin Complete Type 1	Each	15									
	8												
	9												
	10												
SURFACE	1	Loading Gravel	Cu. Yds.										
	2	Hauling Gravel	C.Y. Mi.										
	3	Shaping & Compacting	Cu. Yds.										
	4	Oil	Gal.										
	5	Cut-back	Sq. Yds.										
	6												
	7												
	8												
STRUCTURES	1	Concrete	Cu. Yds.										
	2	Reinforcing Steel	Lbs.										
	3	Excavation	Cu. Yds.										
	4	Piling	Lin. Ft.										
	5												
	6												
	7												
	8												
	9												
	10												

DETAILS

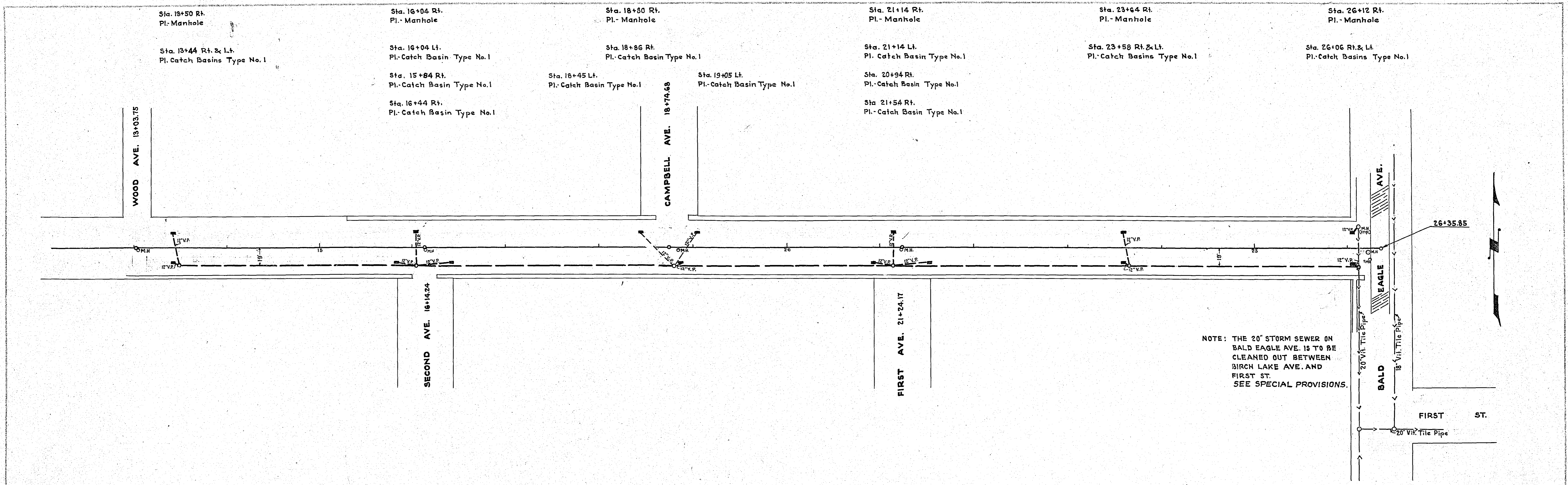


TYPICAL STREET INTERSECTION
Scale 1"=20'

3327

PLAN	DESIGNED	DATE
	EXAMINED	
NOTE BOOK	APPROVED	
NO.	BY	

PROFILE	DESIGNED	DATE
	EXAMINED	
NOTE BOOK	APPROVED	
NO.	BY	



NOTE: THE 20" STORM SEWER ON BALD EAGLE AVE. IS TO BE CLEANED OUT BETWEEN BIRCH LAKE AVE. AND FIRST ST. SEE SPECIAL PROVISIONS.

