

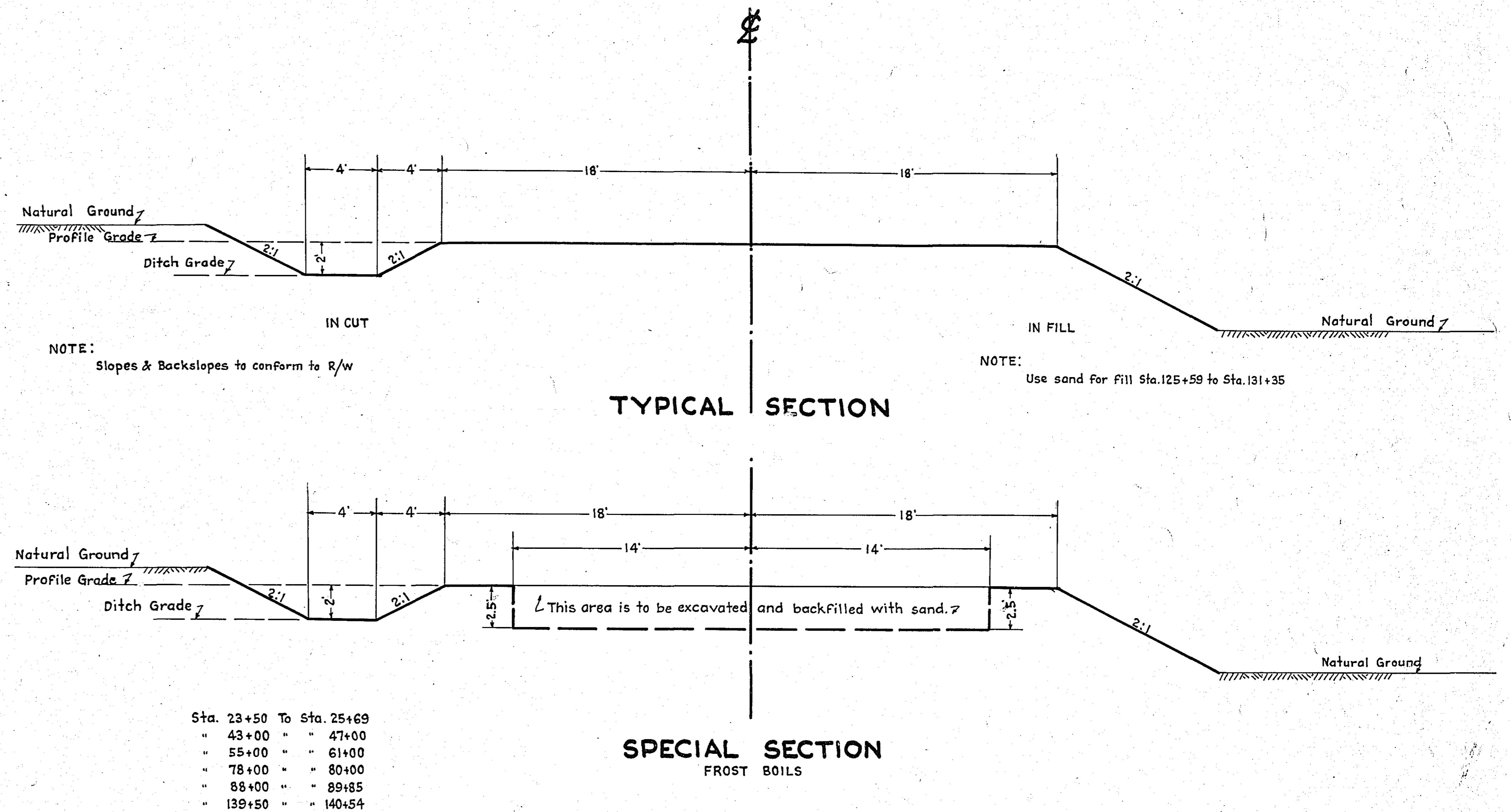
PLAN SURVEYED BY DATE  
 NOTE BOOK ACCURACY CHECKED BY OF WAY APPROVED BY

PROFILE SURVEYED BY DATE  
 NOTE BOOK ACCURACY CHECKED BY OF WAY APPROVED BY

STATEMENT OF ESTIMATED QUANTITIES

CLASS	ITEM	UNIT	MILE From To	MILE From To	MILE From To	MILE From To	MILE From To	MILE From To	MILE From To	MILE From To	MILE From To	MILE From To	TOTAL ESTIMATED QUANTITIES
GRADING	1	Clearing	Trees	6									
	2	Grubbing	Trees	6									
	3	Clearing	Acres										
	4	Grubbing	Acres										
	5	Excavation Earth	Cu. Yds.	11,329									
	6	Excavation Borrow	Cu. Yds.	7,656									
	7	Excavation Solid Rock	Cu. Yds.										
	8	Excavation Overhaul	Cu. Yds.										
	9	Excavation Special	Cu. Yds.										
	10	Excavation Hand Ditch	Cu. Yds.										
	11	Install 12" C.M.	Lin. Ft.										
	12	Install 15" C.M.	Lin. Ft.	620									
	13	Install 18" C.M.	Lin. Ft.										
	14	Install 24" C.M.	Lin. Ft.	20									
	15	Install 30" P3	Lin. Ft.										
	16	Install 36" P3	Lin. Ft.										
	17	Install 18" P3	Lin. Ft.										
	18	Install 24" P3	Lin. Ft.										
	19	Install 30" P3	Lin. Ft.										
	20	Install 36" P3	Lin. Ft.										
	21	Install	Lin. Ft.										
	22	Install	Lin. Ft.										
	23	Remove Old Culvert	Lin. Ft.	988									
	24	Replace Old Culvert	Lin. Ft.	906									
	25	Finishing	Sq. Yds.	160,000									
	26	Rubble Gutter	Cu. Yds.										
	27	Headwall Concrete	Cu. Yds.										
	28	Headwall Steel	Lbs.										
	29	Remove Old Fence	Lin. Ft.	4325									
	30	Replace Old Fence	Lin. Ft.	4230									
	31												
	32												
C.M. CULVERTS	1	Furnish 12" C.M.	Lin. Ft.										
	2	Furnish 15" C.M.	Lin. Ft.	620									
	3	Furnish 18" C.M.	Lin. Ft.										
	4	Furnish 24" C.M.	Lin. Ft.	20									
	5	Furnish	Lin. Ft.										
	6	Furnish	Lin. Ft.										
	7	Furnish 12" C.M. Band	Each										
	8	Furnish 15" C.M. Band	Each										
P3 CULVERTS	1	Furnish 18" P3	Lin. Ft.										
	2	Furnish 24" P3	Lin. Ft.										
	3	Furnish 30" P3	Lin. Ft.										
	4	Furnish 36" P3	Lin. Ft.										
	5												
	6												
GUARD RAIL	1	Guard Rail - Cable	Lin. Ft.	9130									
	2	Guard Rail - Cable - Remove	Lin. Ft.	492									
	3	Guard Rail Cable Replace	Lin. Ft.	492									
	4												
SIDEWALKS AND CURBING	1	Concrete Curb - Straight	Lin. Ft.										
	2	Concrete Curb - Radius	Lin. Ft.										
	3	Remove Old Curb	Lin. Ft.										
	4	Remove Old Curb and Gutter	Lin. Ft.										
	5	Remove Old Sidewalk	Sq. Ft.										
	6	Replace Old Sidewalk	Sq. Ft.										
	7	Construct New Sidewalk	Sq. Ft.										
	8	Curb Inlet	Each										
	9	Catch Basin Complete	Each										
	10												
	11												
	12												
SEWER	1	12" Vitrified Sewer Pipe	Lin. Ft.										
	2	15" Vitrified Sewer Pipe	Lin. Ft.										
	3	18" Vitrified Sewer Pipe	Lin. Ft.										
	4	20" Vitrified Sewer Pipe	Lin. Ft.										
	5	24" Vitrified Sewer Pipe	Lin. Ft.										
	6	Manhole Complete	Each										
	7	Catch Basin Complete	Each										
SURFACE	1	Loading Gravel	Cu. Yds.										
	2	Hauling Gravel	C.Y. Mi.										
	3	Shaping & Compacting	Cu. Yds.										
	4	Oil	Gal.										
	5	Cut-back	Sq. Yds.	63,900									
	6												
	7												
	8												
STRUCTURES	1	Concrete	Cu. Yds.										
	2	Reinforcing Steel	Lbs.										
	3	Excavation	Cu. Yds.										
	4	Piling	Lin. Ft.										
	5												
	6												
	7												
	8												
	9												
	10												

DETAILS



*Not constructed  
7/11/42*

OFFICE OF  
RAMSEY COUNTY SURVEYOR  
HARRY S. BRONSON  
GRADING PLAN OF  
*4 mi. S. of* CLEVELAND AVE.  
FROM LARPEUR AVE. TO 380 FT. SOUTH OF COUNTY RD. E.  
MAY 1942 SCALE AS SHOWN

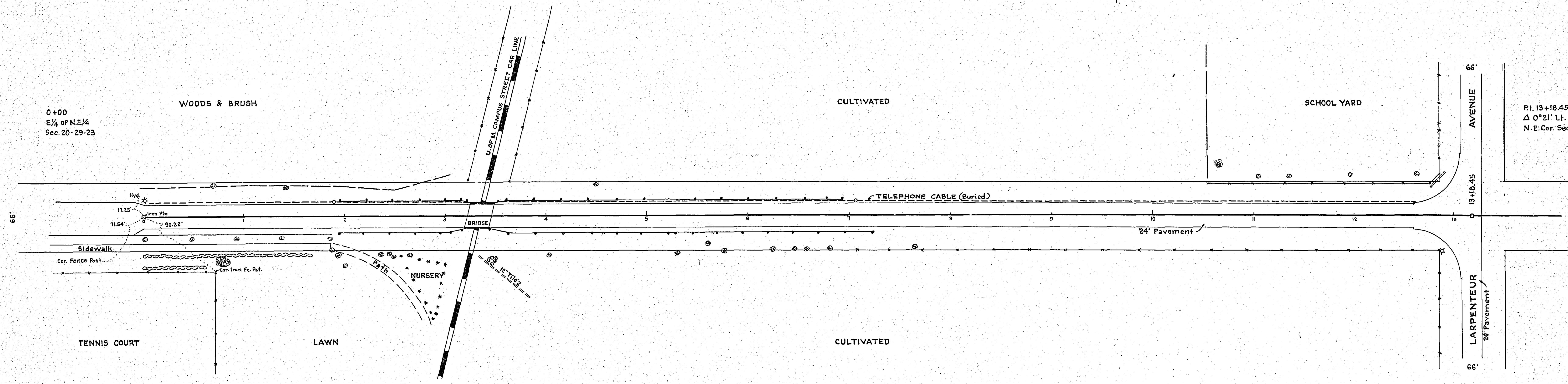
PLANNED BY \_\_\_\_\_ ASSISTANT ENGINEER

PLANS APPROVED \_\_\_\_\_ 1942 ACTING COUNTY SURVEYOR

APPROVED \_\_\_\_\_ 1942 CHAIRMAN RAMSEY COUNTY BOARD

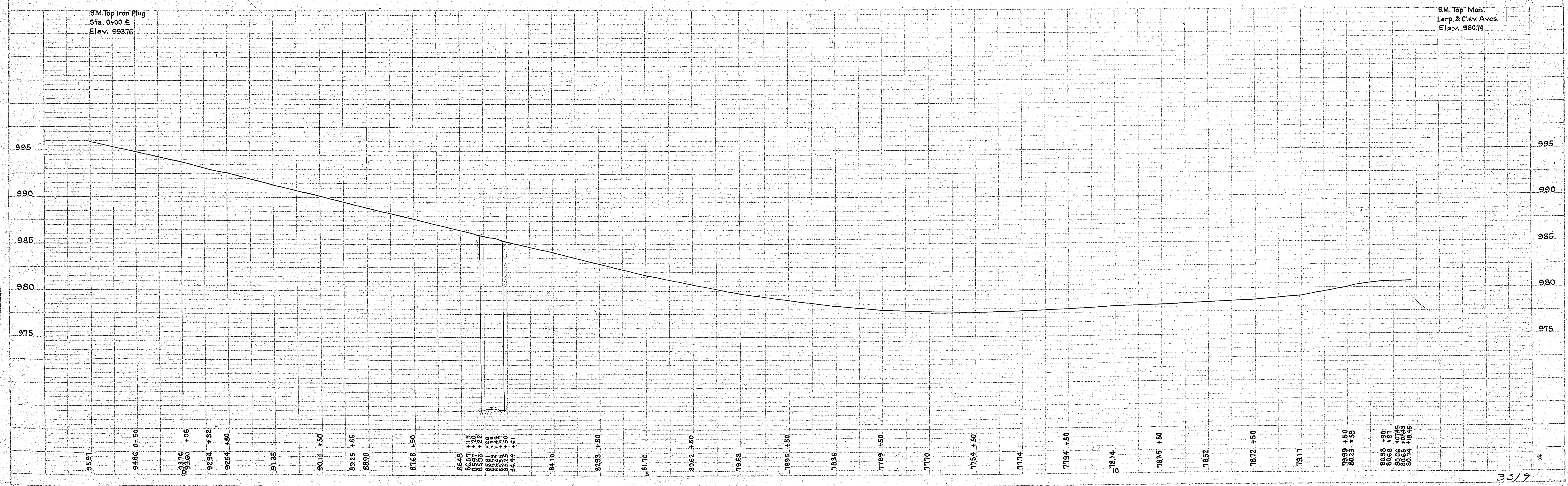


PLAN	SUBMITTED	DATE
NOTED	BY	
ROUTE BOOK	NO.	
NO.		



P.I. 13+18.45  
Δ 0°21' Lt.  
N.E. Cor. Sec. 20-T29N-R23W.

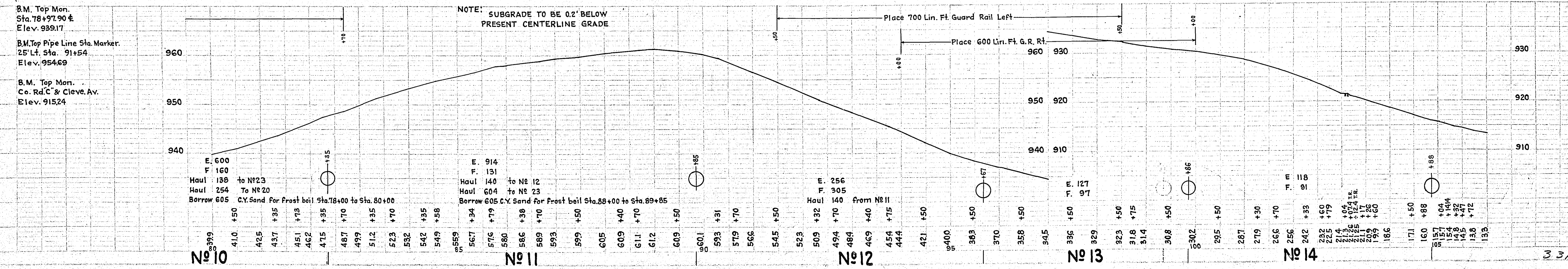
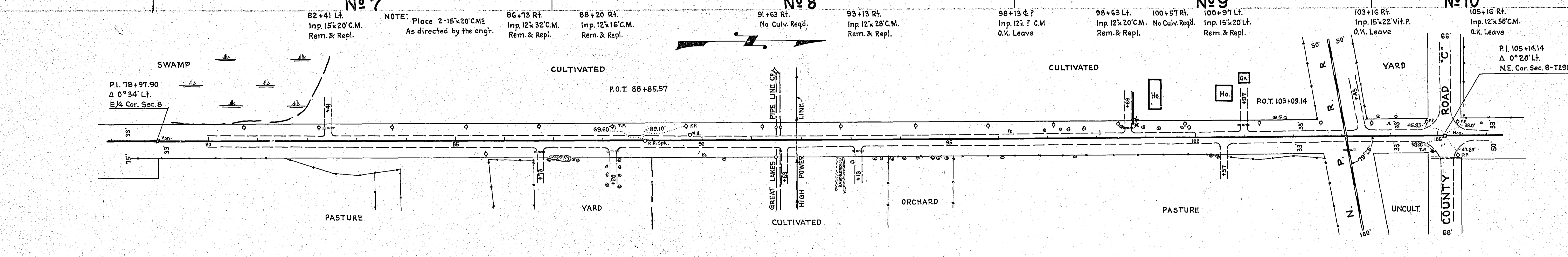
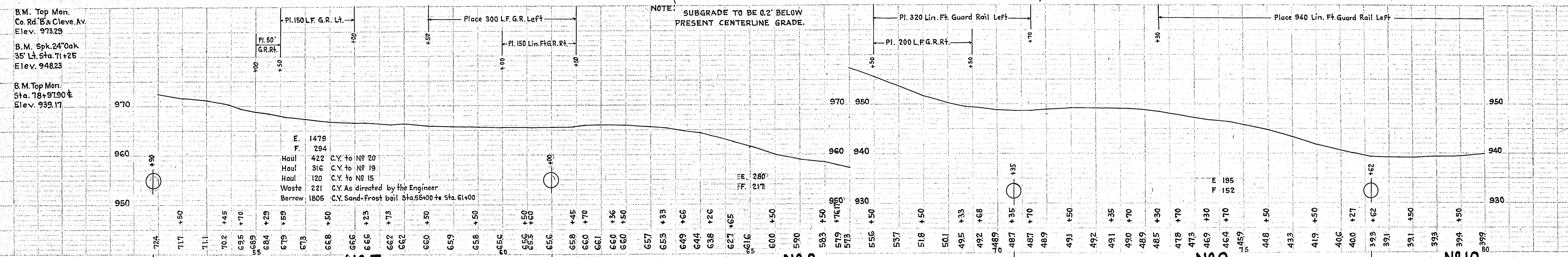
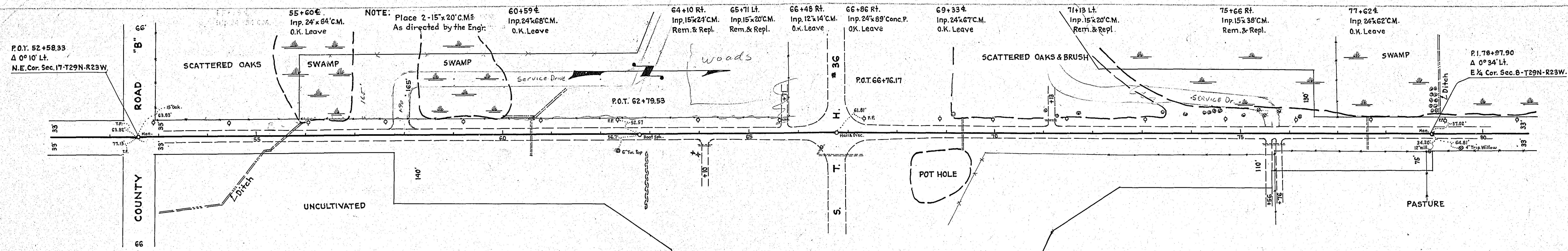
PROFILE	SUBMITTED	DATE
NOTED	BY	
ROUTE BOOK	NO.	
NO.		



B.M. Top Iron Plug  
Sta. 0+00 E  
Elev. 993.76

B.M. Top Mon.  
Larp. & Clev. Aves.  
Elev. 980.74



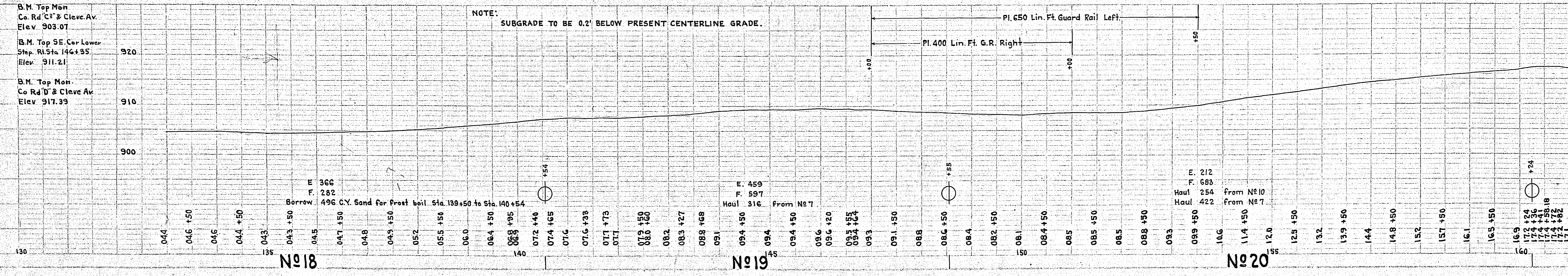
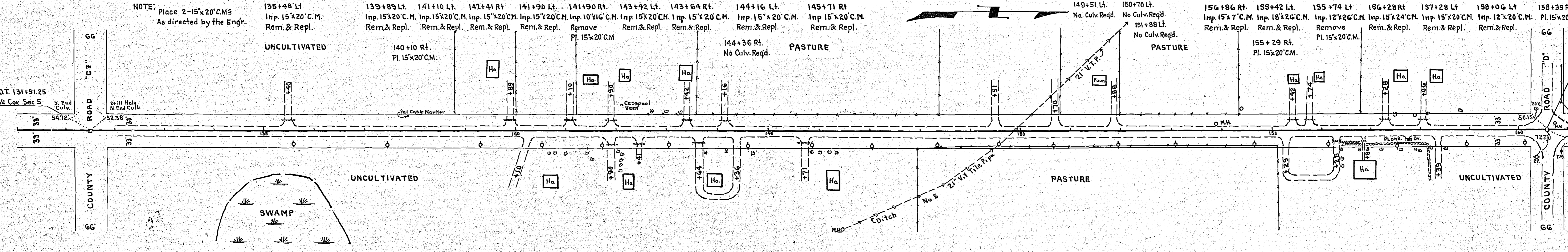
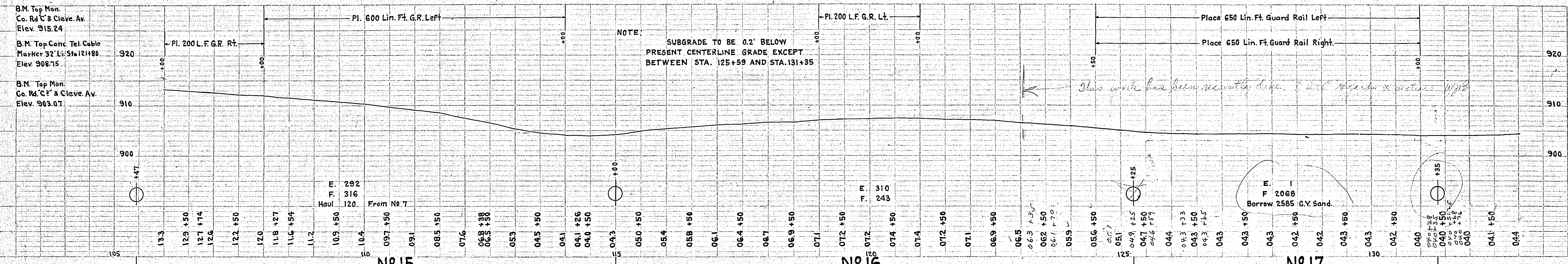
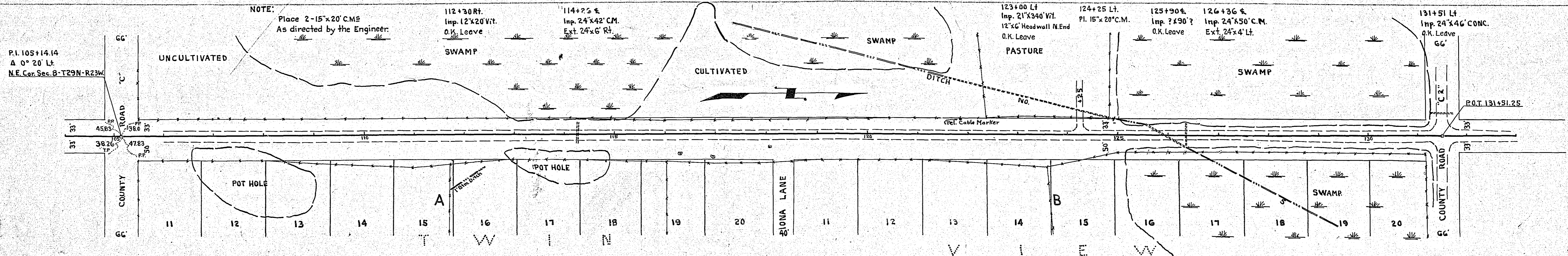


PLAN  
 NOTE: SEE PLACEMENT CHECKS  
 OF THIS SHEET

PROFILE  
 NOTE: SEE PLACEMENT CHECKS  
 OF THIS SHEET

B.M. Top Mon.  
 Co. Rd. B & Cleve. Av.  
 Elev. 973.29  
 B.M. Spk. 24" Oak  
 35' Lt. Sta. 71+25  
 Elev. 948.23  
 B.M. Top Mon.  
 Sta. 78+97.90  
 Elev. 939.17

B.M. Top Mon.  
 Sta. 78+97.90  
 Elev. 939.17  
 B.M. Top Pipe Line Sta. Marker.  
 25' Lt. Sta. 91+54  
 Elev. 954.69  
 B.M. Top Mon.  
 Co. Rd. C & Cleve. Av.  
 Elev. 915.24



PLAN SHEET  
 DATE  
 SCALE  
 DRAWN BY  
 CHECKED BY  
 APPROVED BY

PROFILE SHEET  
 DATE  
 SCALE  
 DRAWN BY  
 CHECKED BY  
 APPROVED BY

PLATE 1-PLAN AND PROFILE