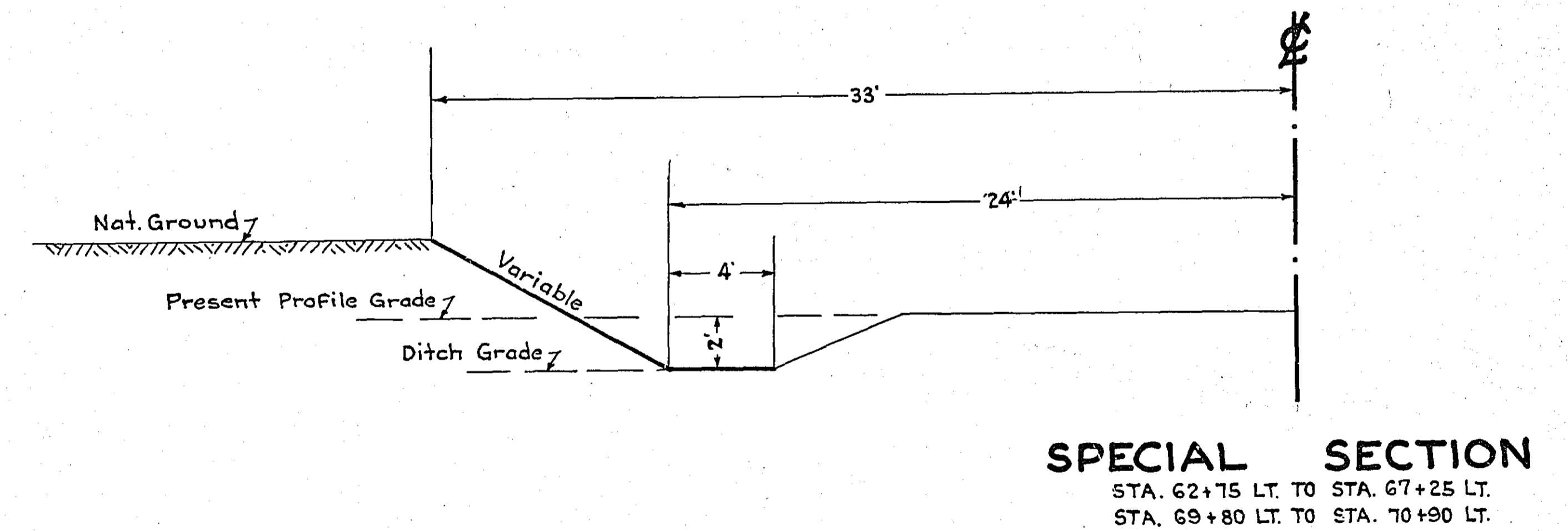
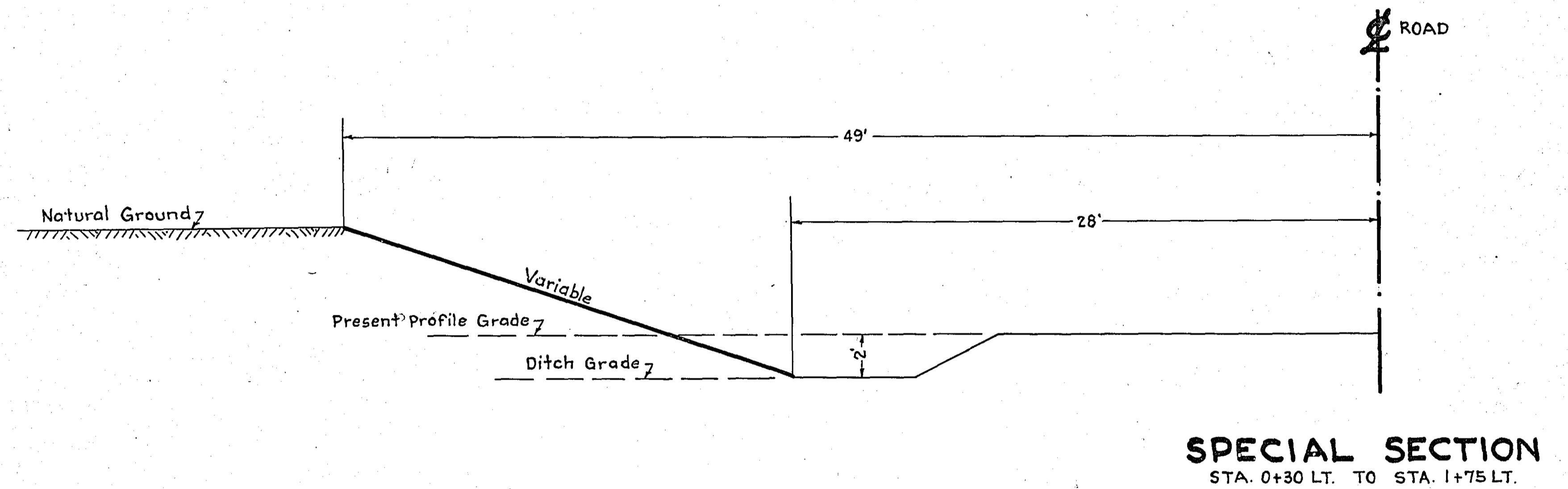
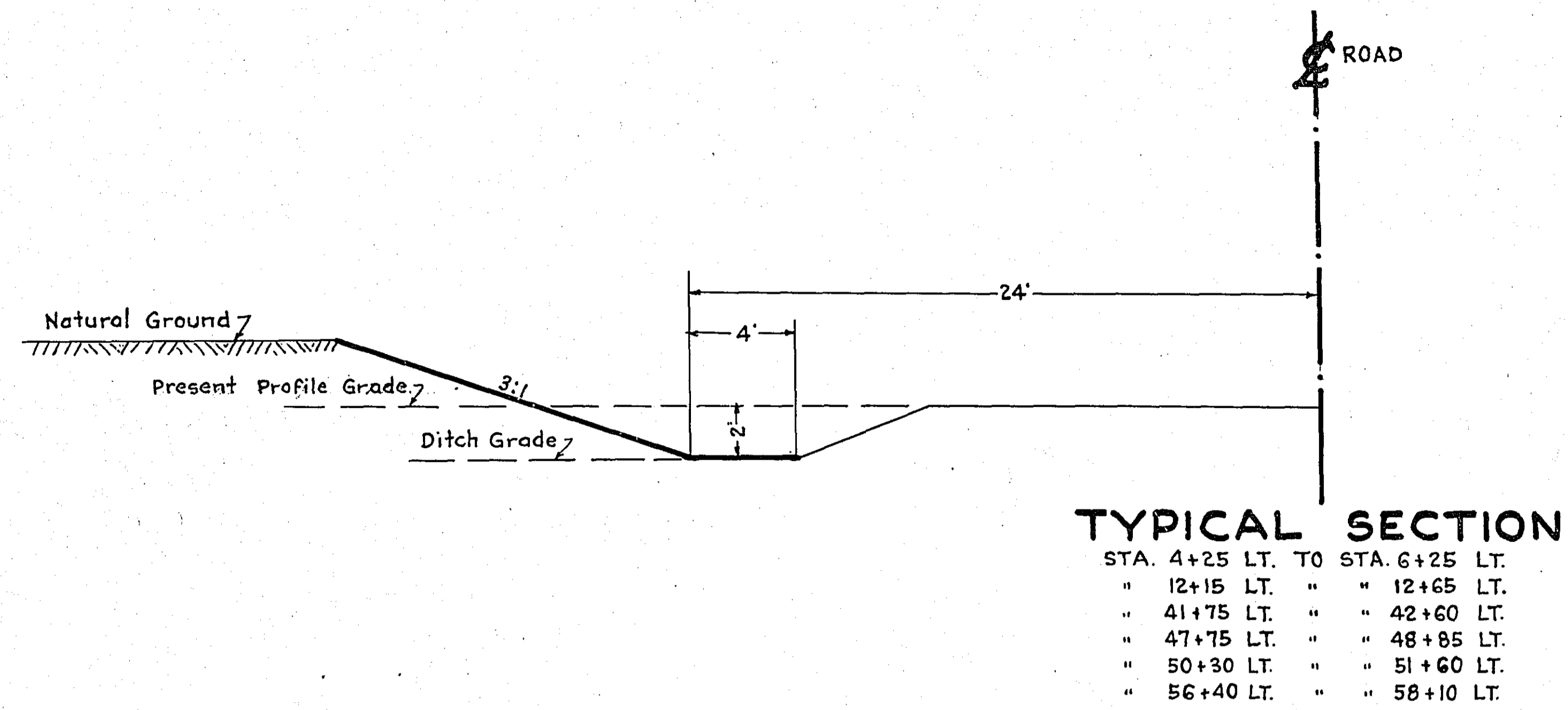


STATEMENT OF ESTIMATED QUANTITIES

CLASS	ITEM	UNIT	MILE From To	MILE From To	MILE From To	MILE From To	MILE From To	MILE From To	MILE From To	MILE From To	MILE From To	MILE From To	MILE From To	TOTAL ESTIMATED QUANTITIES
GRADING	1	Clearing	Trees											
	2	Grubbing	Trees											
	3	Clearing	Acres											
	4	Grubbing	Acres											
	5	Excavation Earth	Cu. Yds.	1298										
	6	Excavation Loose Rock	Cu. Yds.											
	7	Excavation Solid Rock	Cu. Yds.											
	8	Excavation Overhaul	Cu. Yds.											
	9	Excavation Special	Cu. Yds.											
	10	Excavation Hand Ditch	Cu. Yds.											
	11	Install 12" C.M.	Lin. Ft.											
	12	Install 15" C.M.	Lin. Ft.											
	13	Install 18" C.M.	Lin. Ft.											
	14	Install 24" C.M.	Lin. Ft.											
	15	Install	Lin. Ft.											
	16	Install	Lin. Ft.											
	17	Install 18" Ps	Lin. Ft.											
	18	Install 24" Ps	Lin. Ft.											
	19	Install 30" Ps	Lin. Ft.											
	20	Install 36" Ps	Lin. Ft.											
	21	Install	Lin. Ft.											
	22	Install	Lin. Ft.											
	23	Remove Old Culvert	Lin. Ft.											
	24	Replace Old Culvert	Lin. Ft.											
	25	Finishing and Seeding	100 Sq.Yds.											
	26	Rubble Gutter	Cu. Yds.											
	27	Headwall Concrete	Cu. Yds.											
	28	Headwall Steel	Lbs.											
	29													
	30													
	31													
	32													
C.M. CULVERTS	1	Furnish 12" C.M.	Lin. Ft.											
	2	Furnish 15" C.M.	Lin. Ft.											
	3	Furnish 18" C.M.	Lin. Ft.											
	4	Furnish 24" C.M.	Lin. Ft.											
	5	Furnish	Lin. Ft.											
	6	Furnish	Lin. Ft.											
	7	Furnish 12" C.M. Band	Each											
	8	Furnish 15" C.M. Band	Each											
	9													
	10													
Ps CULVERTS	1	Furnish 18" Ps	Lin. Ft.											
	2	Furnish 24" Ps	Lin. Ft.											
	3	Furnish 30" Ps	Lin. Ft.											
	4	Furnish 36" Ps	Lin. Ft.											
	5													
	6													
GUARD RAIL	1	Guard Rail - Cable	Lin. Ft.											
	2	Guard Rail Anchors	Each											
	3	Dummy Posts	Each											
	4													
SIDEWALKS AND CURBING	1	Concrete Curb - Straight	Lin. Ft.											
	2	Concrete Curb - Radius	Lin. Ft.											
	3	Remove Old Curb	Lin. Ft.											
	4	Remove Old Curb and Gutter	Lin. Ft.											
	5	Remove Old Sidewalk	Sq. Ft.											
	6	Replace Old Sidewalk	Sq. Ft.											
	7	Construct New Sidewalk	Sq. Ft.											
	8	Curb Inlet	Each											
	9	Catch Basin Complete	Each											
	10													
	11													
	12													
SEWER	1	12" Vitrified Sewer Pipe	Lin. Ft.											
	2	15" Vitrified Sewer Pipe	Lin. Ft.											
	3	18" Vitrified Sewer Pipe	Lin. Ft.											
	4	20" Vitrified Sewer Pipe	Lin. Ft.											
	5	24" Vitrified Sewer Pipe	Lin. Ft.											
	6	Manhole Complete	Each											
	7	Catch Basin Complete	Each											
	8													
	9													
	10													
SURFACE	1	Loading Gravel	Cu. Yds.											
	2	Hauling Gravel	C.Y. Mt.											
	3	Shaping & Compacting	Cu. Yds.											
	4	Oil	Gal.											
	5	Cut-back	Sq. Yds.											
	6													
	7													
	8													
STRUCTURES	1	Concrete	Cu. Yds.											
	2	Reinforcing Steel	Lbs.											
	3	Excavation	Cu. Yds.											
	4	Piling	Lin. Ft.											
	5													
	6													
	7													
	8													
	9													
	10													

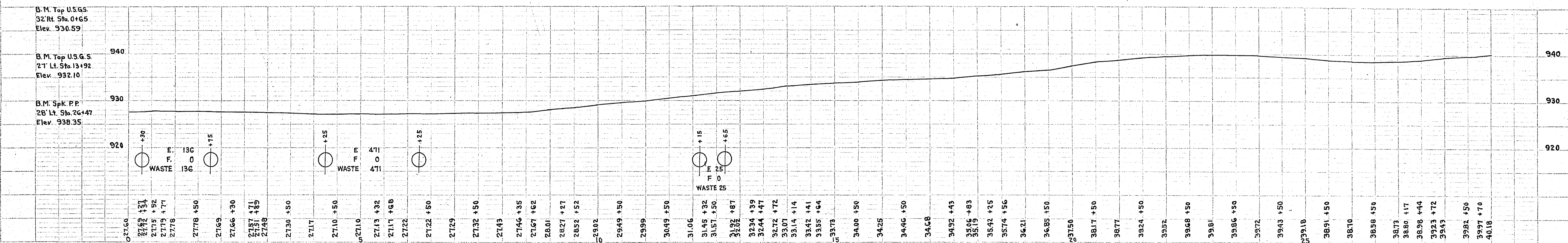
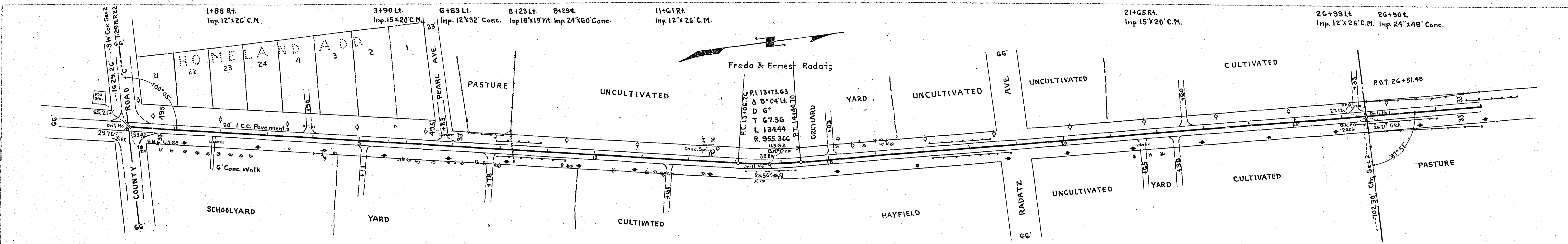
DETAILS



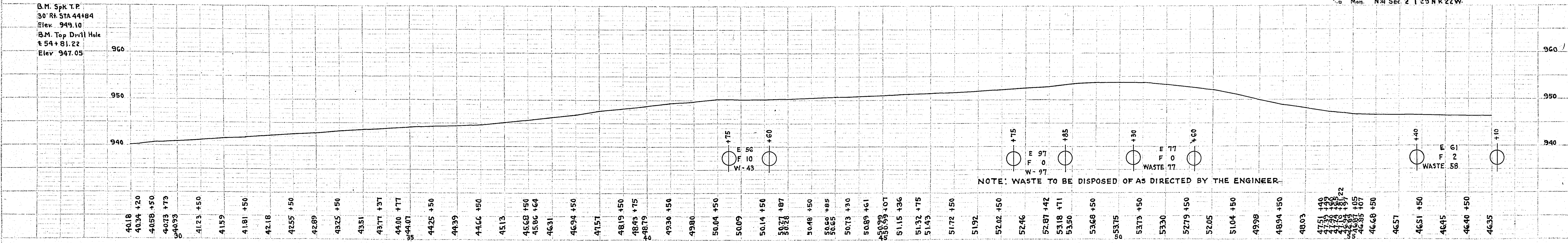
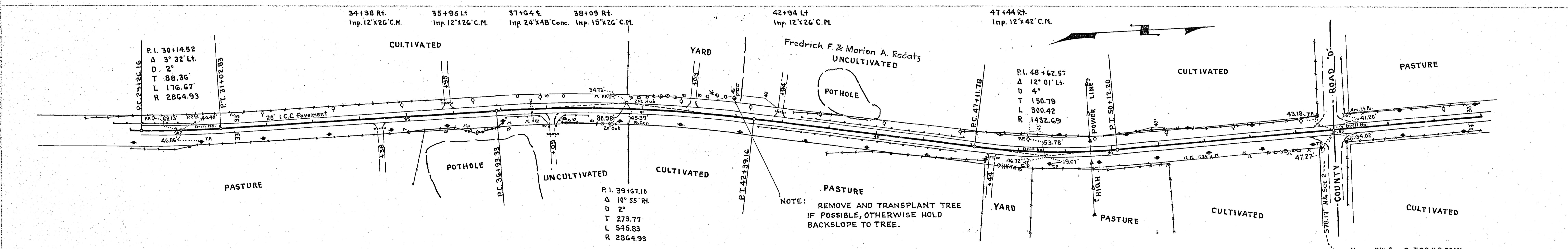
OFFICE OF  
 RAMSEY COUNTY SURVEYOR  
 HARRY S. BRONSON  
 GRADING PLAN OF  
**WHITE BEAR AVE.**  
 FROM COUNTY ROAD "C" TO ORCHARD LANE.  
 SEPT. 1941 SCALE AS SHOWN

PLANNED BY *A.D. Cranton*  
 ASSISTANT ENGINEER  
 PLANS APPROVED *10/6 1941* *Wm. Carley*  
 ACTING COUNTY SURVEYOR  
 APPROVED *10/6 1941* *J.D. MacCaughey*  
 CHAIRMAN OF COUNTY BOARD

PLAN  
 DATE: 10/15/54  
 DRAWN BY: J. W. BROWN  
 CHECKED BY: J. W. BROWN  
 TITLE: ROADWAY IMPROVEMENT

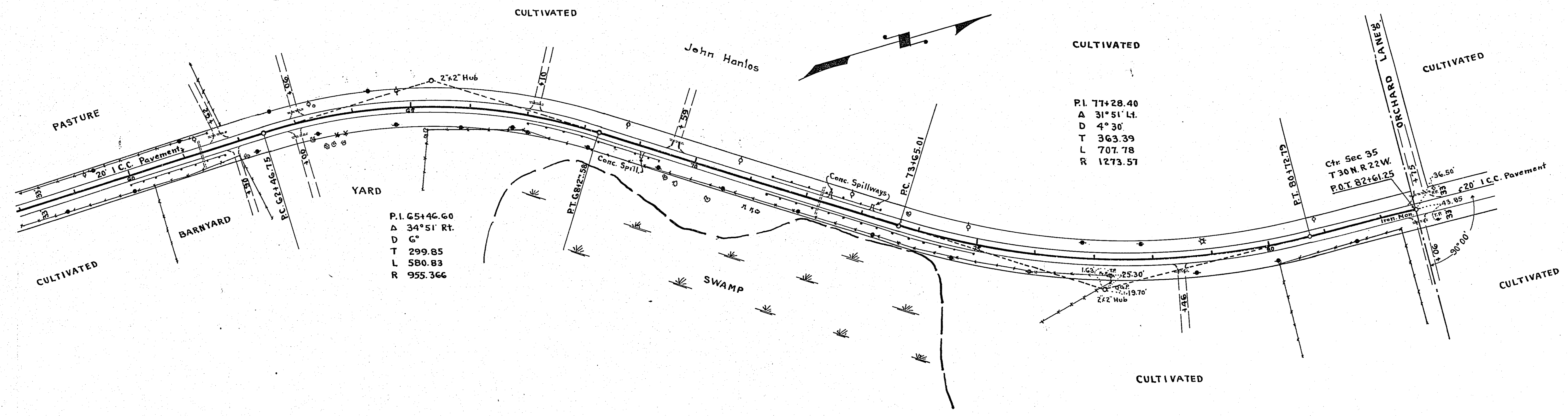


PROFILE  
 DATE: 10/15/54  
 DRAWN BY: J. W. BROWN  
 CHECKED BY: J. W. BROWN  
 TITLE: ROADWAY IMPROVEMENT



NOTE: WASTE TO BE DISPOSED OF AS DIRECTED BY THE ENGINEER.

61+29 ± G1+62 Lt. G2+00 Rt. G3+06 Lt. G7+10 Lt. G9+59 Lt. 72+25 ± 78+46 Rt. 82+66 Rt. 82+75 Lt.  
 Inp. 24"x50" Conc. Inp. 15"x32" C.M. Inp. 12"x38" C.M. Inp. 12"x24" C.M. Inp. 12"x18" Vit. Inp. 12"x24" Vit. Inp. 24"x50" Conc. Inp. 12"x26" C.M. Inp. 12"x36" C.M. Inp. 12"x24" C.M.



PLAN  
 SOURCE: SURVEY  
 PLOTTED: [ ]  
 CHECKED: [ ]  
 DATE: [ ]  
 NO. [ ]

PROFILE  
 SOURCE: SURVEY  
 PLOTTED: [ ]  
 CHECKED: [ ]  
 DATE: [ ]  
 NO. [ ]

