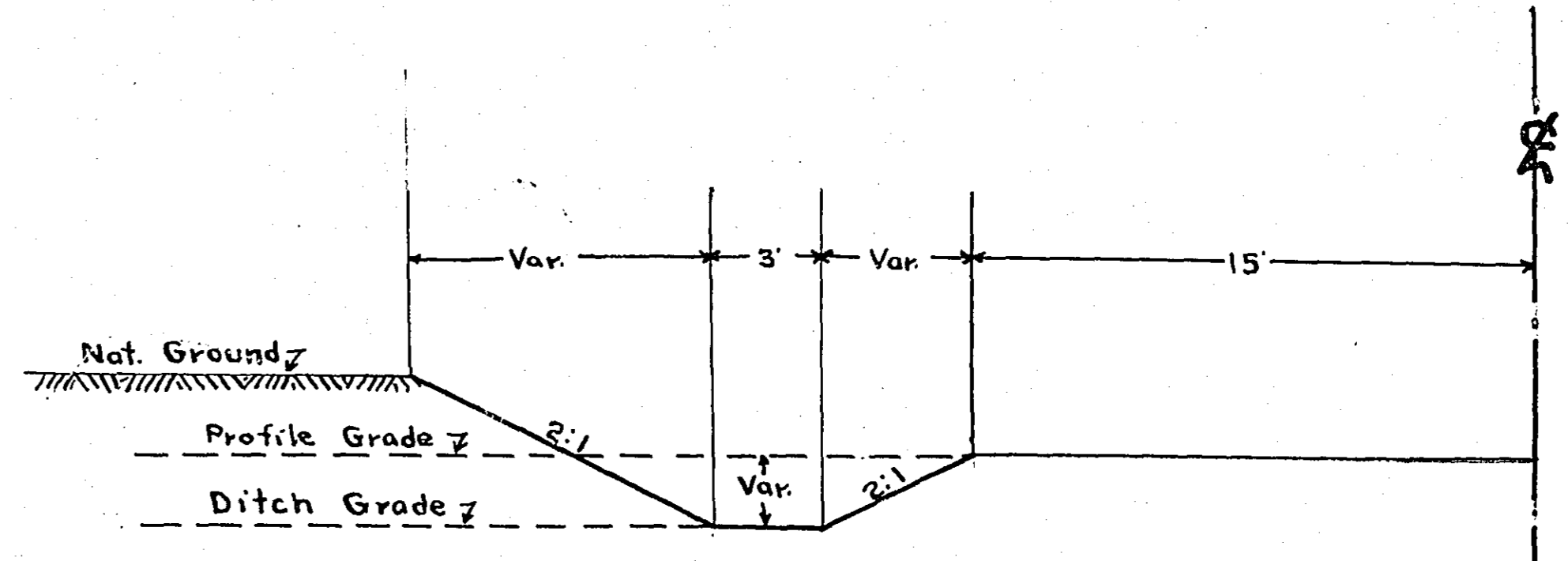
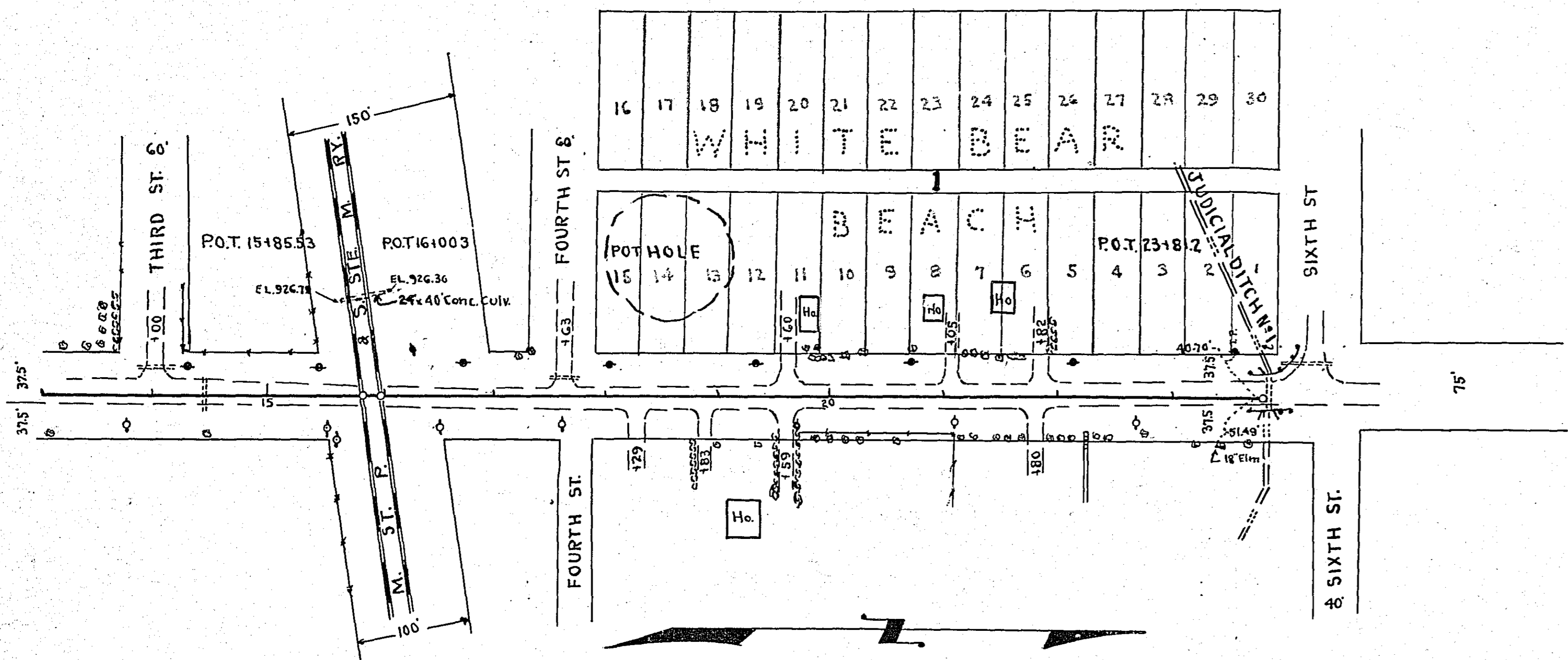


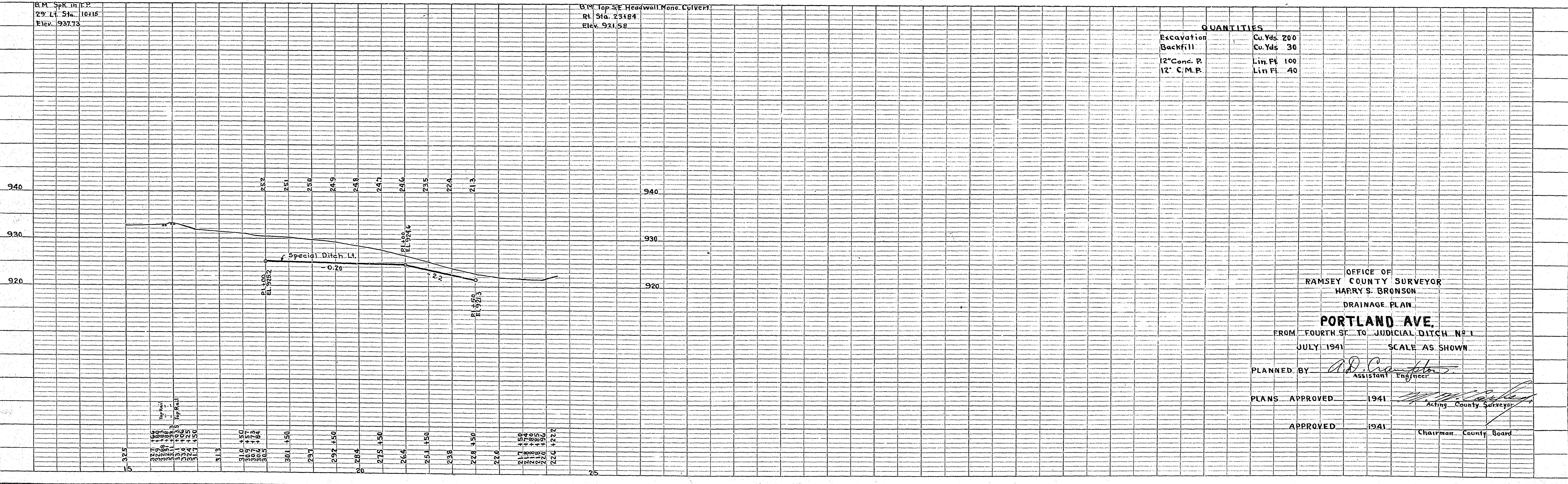
14+00 L₄ 14+43 L₄ 17+63 L₁ 19+50 TO 20+50 L₁ 21+05 L₁ 21+82 L₁ 23+84 L₄ 24+17 L₁
 Inp. 12"x32" C.M. Inp. 12"x30" C.M. Inp. 12"x36" C.M. Pl. 12"x100' Conc. P. Pl. 12"x20" C.M. Pl. 12"x20" C.M. Inp. 6" Wide x 7' Depth x 30' Long Monolithic Conc. Culvert With 8' Wing Walls 10' Wide At Mouth Inp. 10"x48" C.M.



TYPICAL SECTION
 STA 18+00 TO STA 19+50 L₁
 STA 20+50 TO STA 22+00 L₁

PLAN	DATE
SURVEYED	BY
PLOTTED	
NOTE BOOK	
ALIGNED CHECKED	
RT. OF WAY CHECKED	
NO.	

PROFILE	DATE
SURVEYED	BY
PLOTTED	
NOTE BOOK	
GRADES CHECKED	
ST. BE. LINES NOTAT HIS CH'G.	
NO.	



QUANTITIES

Excavation	Cu. Yds. 200
Backfill	Cu. Yds. 30
12" Conc. P.	Lin. Ft. 100
12" C.M.P.	Lin. Ft. 40

OFFICE OF
 RAMSEY COUNTY SURVEYOR
 HARRY S. BRONSON
 DRAINAGE PLAN
PORTLAND AVE.
 FROM FOURTH ST. TO JUDICIAL DITCH NO. 1
 JULY 1941 SCALE AS SHOWN
 PLANNED BY *A.D. Crumpler* Assistant Engineer
 PLANS APPROVED 1941 *[Signature]* Acting County Surveyor
 APPROVED 1941 *[Signature]* Chairman County Board