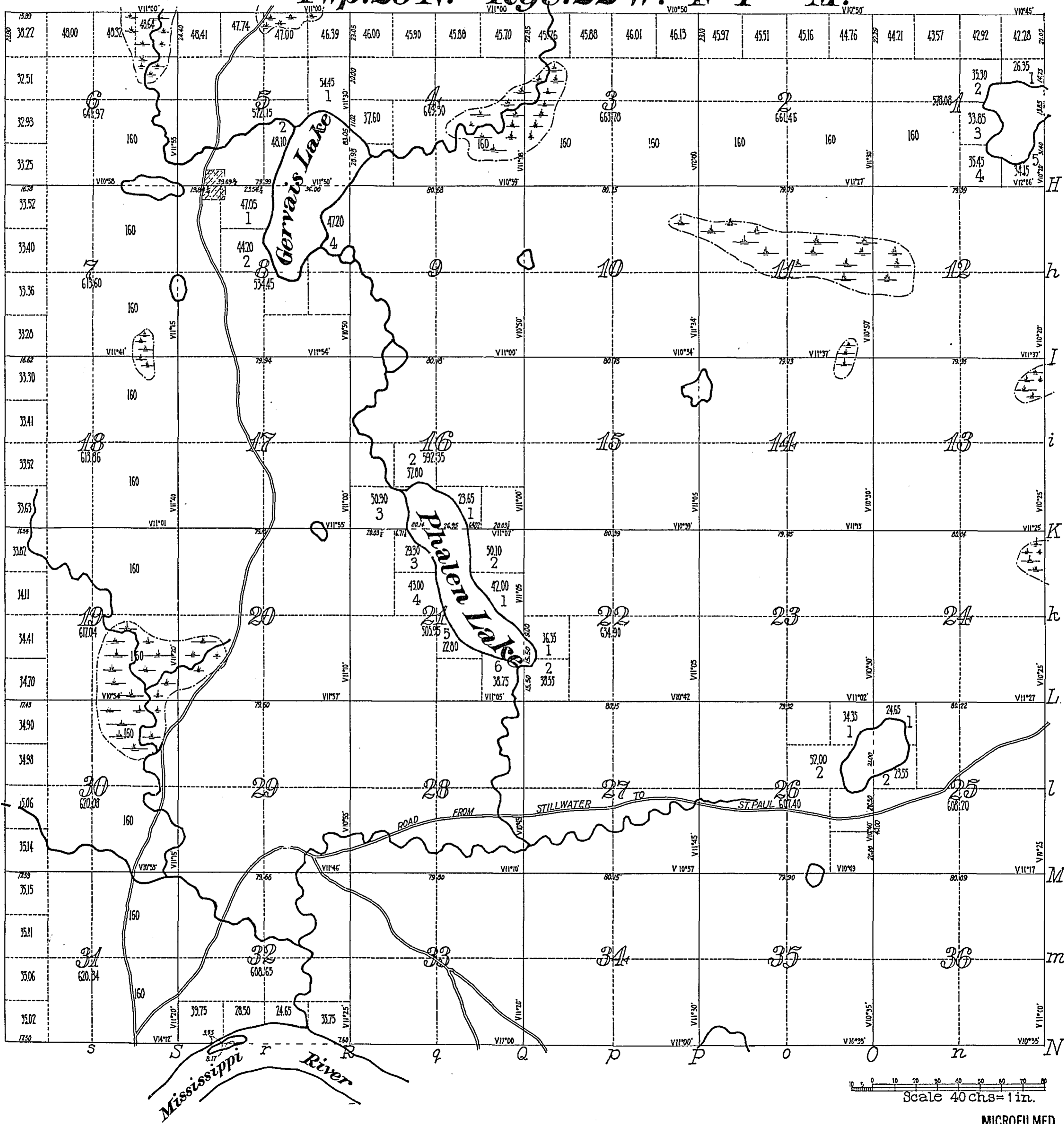


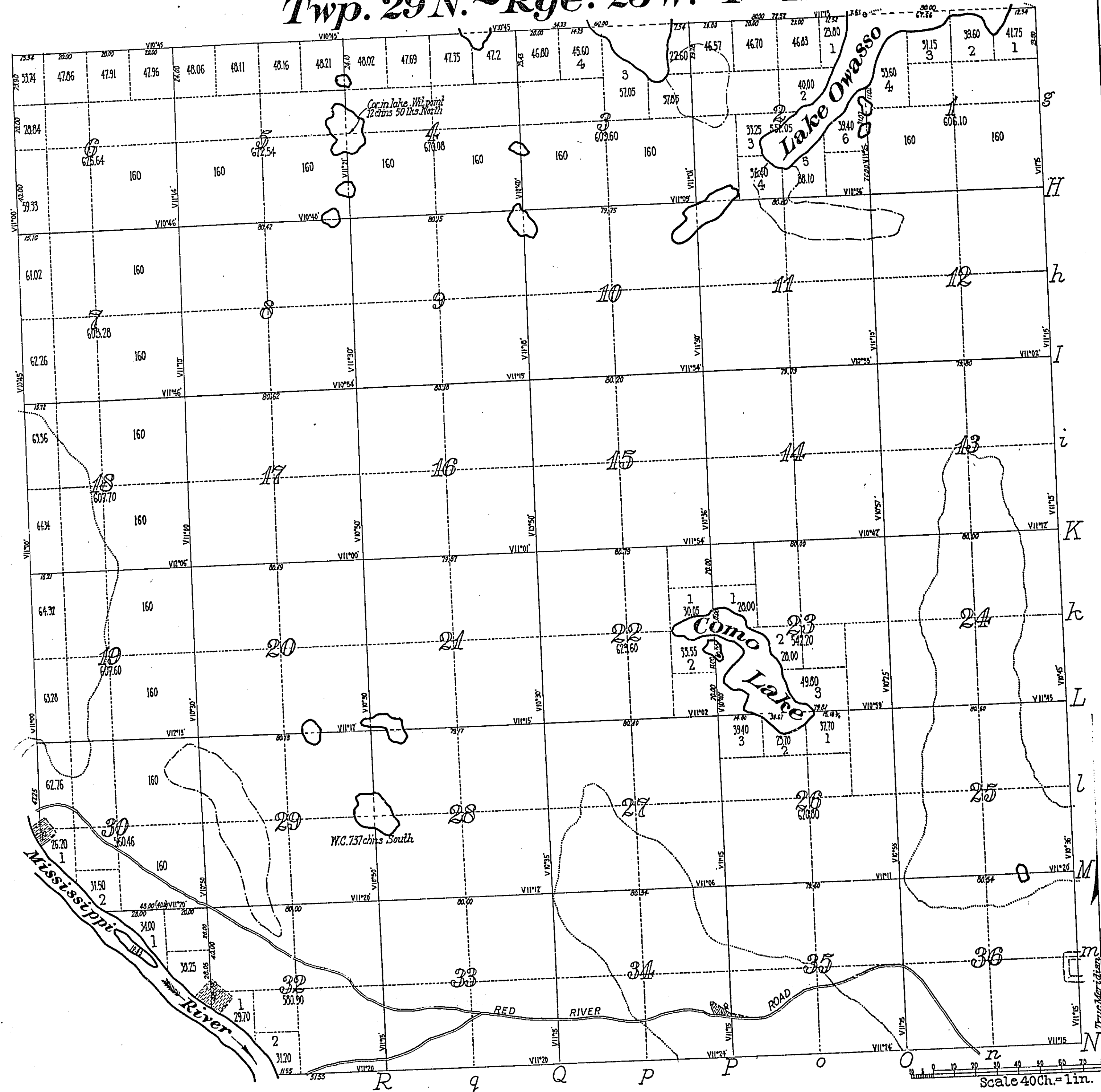
# Twp. 29 N. - Rge. 22 W. 4<sup>th</sup> Prin. M.



Scale 40 chs = 1 in.

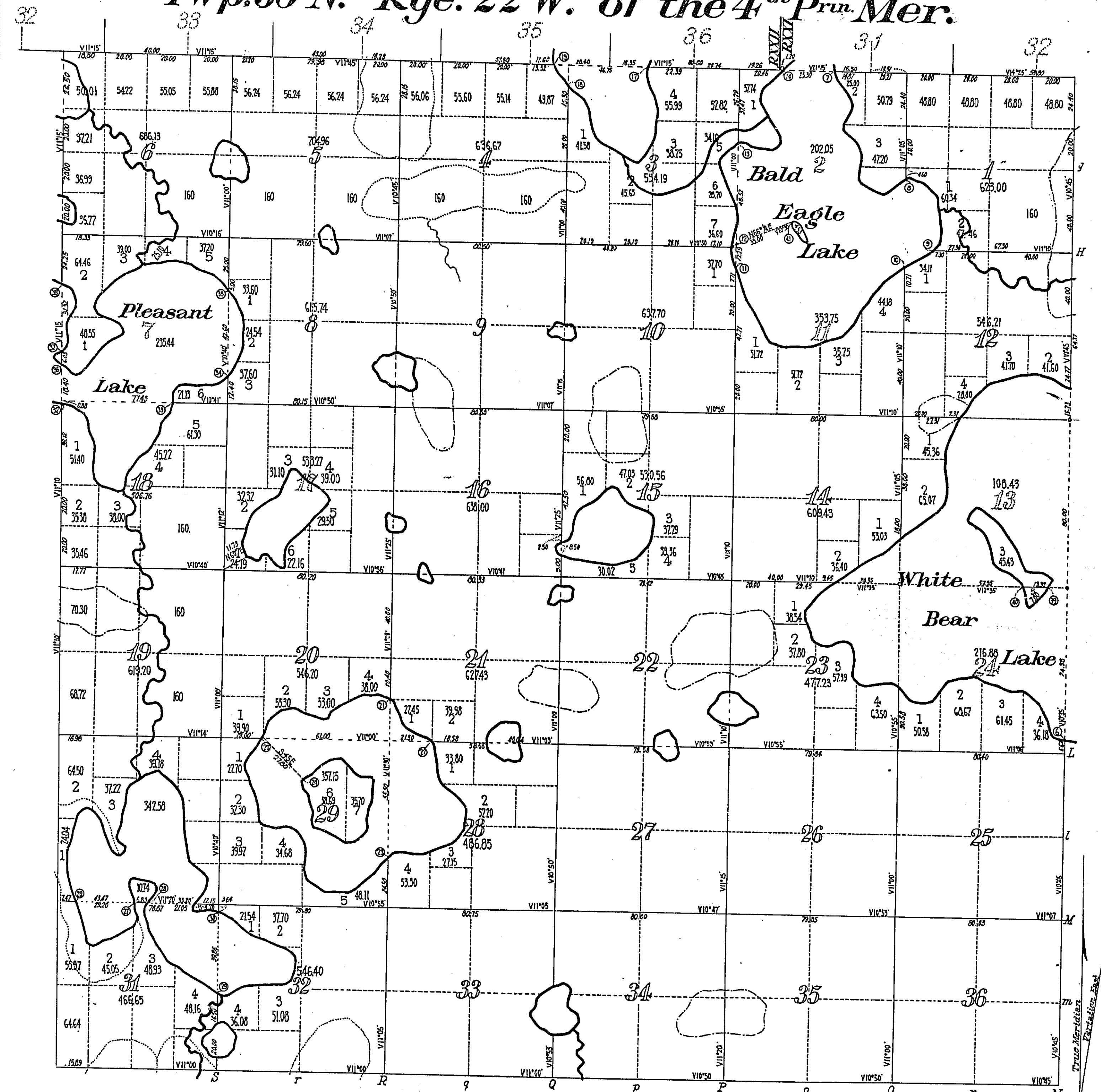
MICROFILMED  
RAMSEY CO. ENGR'

Twp. 29 N. ~ Rge. 23 W. 4<sup>th</sup> Mer.



MICROFILMED  
RAMSEY CO. ENGR.

Twp. 30 N. ~ Rge. 22 W. of the 4<sup>th</sup> Prin. Mer.



N. Twp. Line surveyed by Henry Wiltze  
S.E. & W. Twp. Lines " " James N. Marsh  
Subdivided by Higbee

Drawn Mar. 15, 1848

George W. Jones, Sur. Genl.  
MICROFILMED  
RAMSEY CO. ENGR.