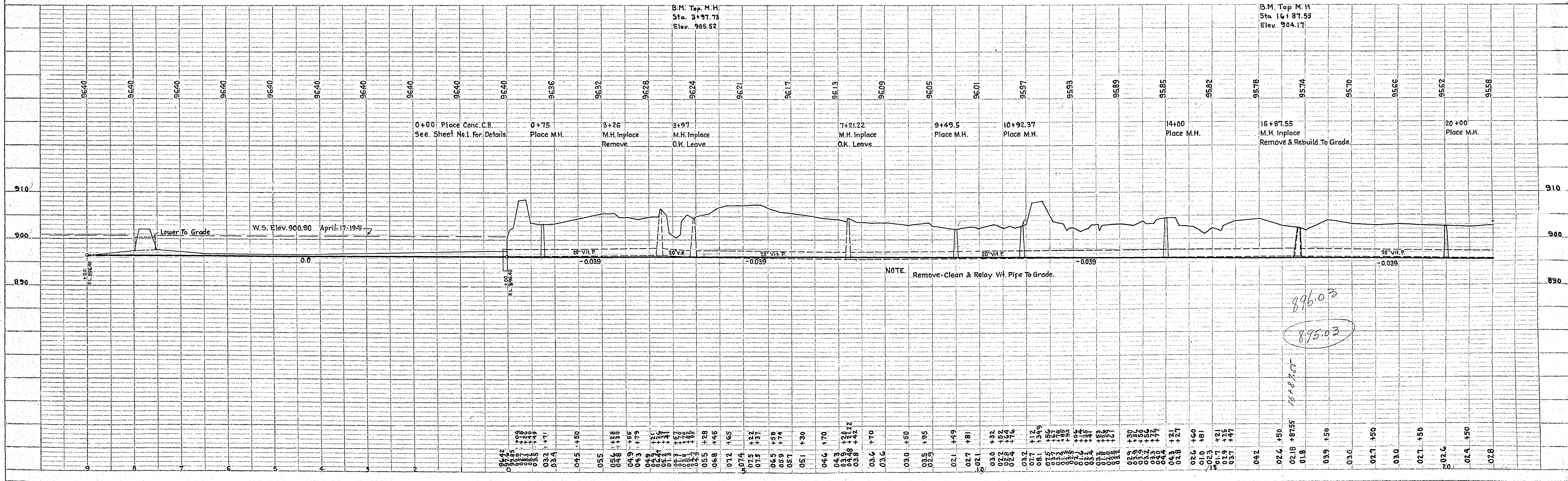
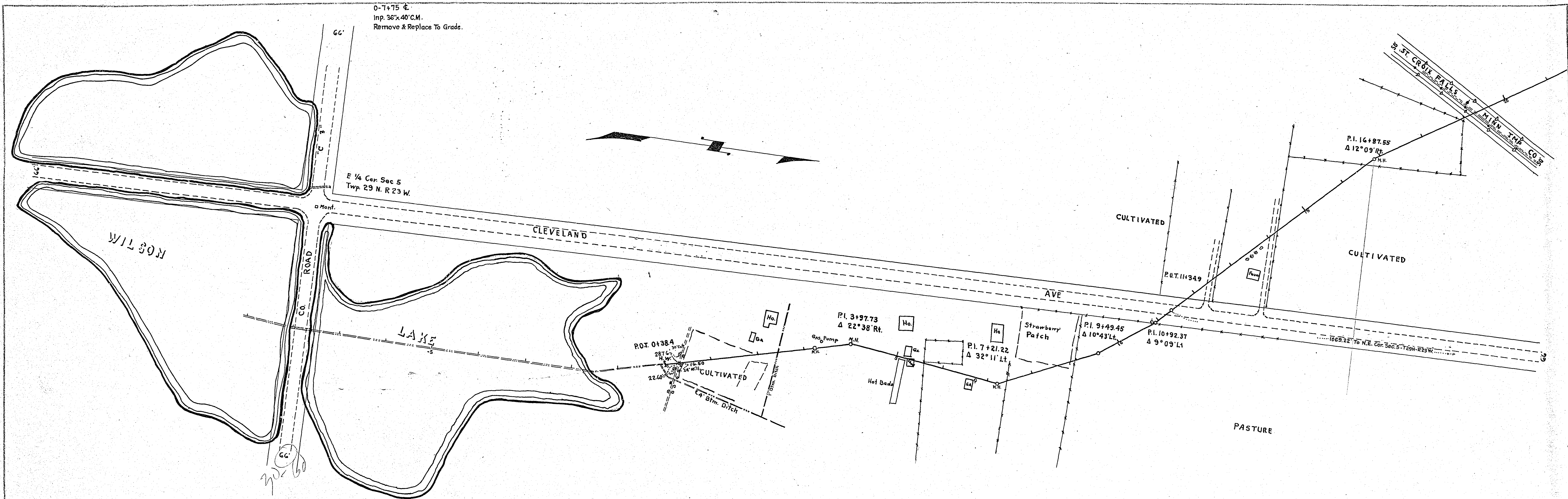


PLAN	DATE
SUBMITTED	BY
REVISIONS	
NOTED	
NOTE BOOK	
PLANNING CHECKED	
BY	
DATE	
NO.	

PROFILE	DATE
SURVEYED	BY
ALIGNED	
NOTED	
NOTE BOOK	
PLANNING CHECKED	
BY	
DATE	
NO.	



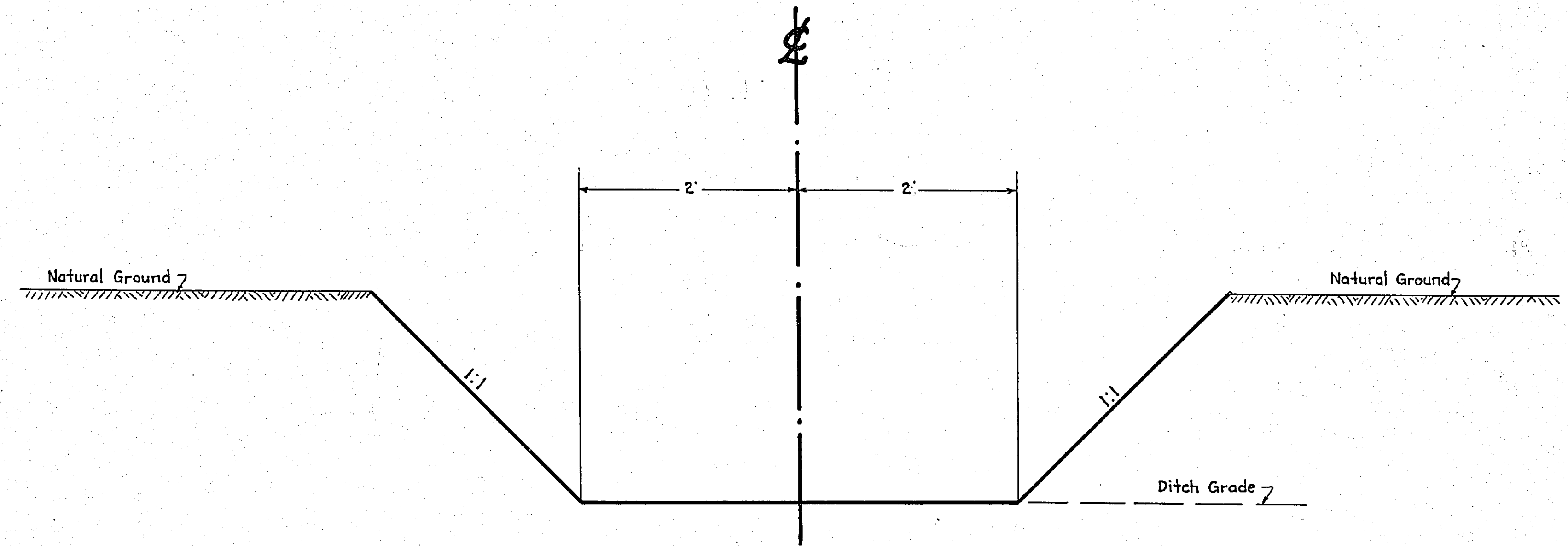
896.03  
895.03



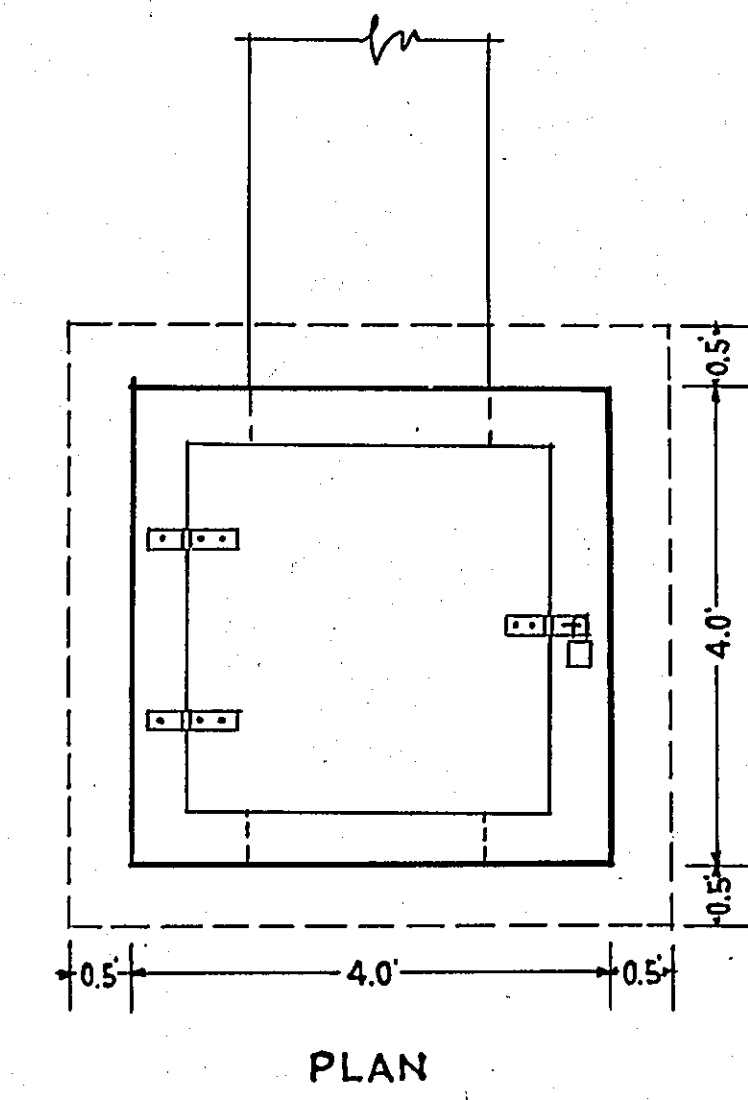
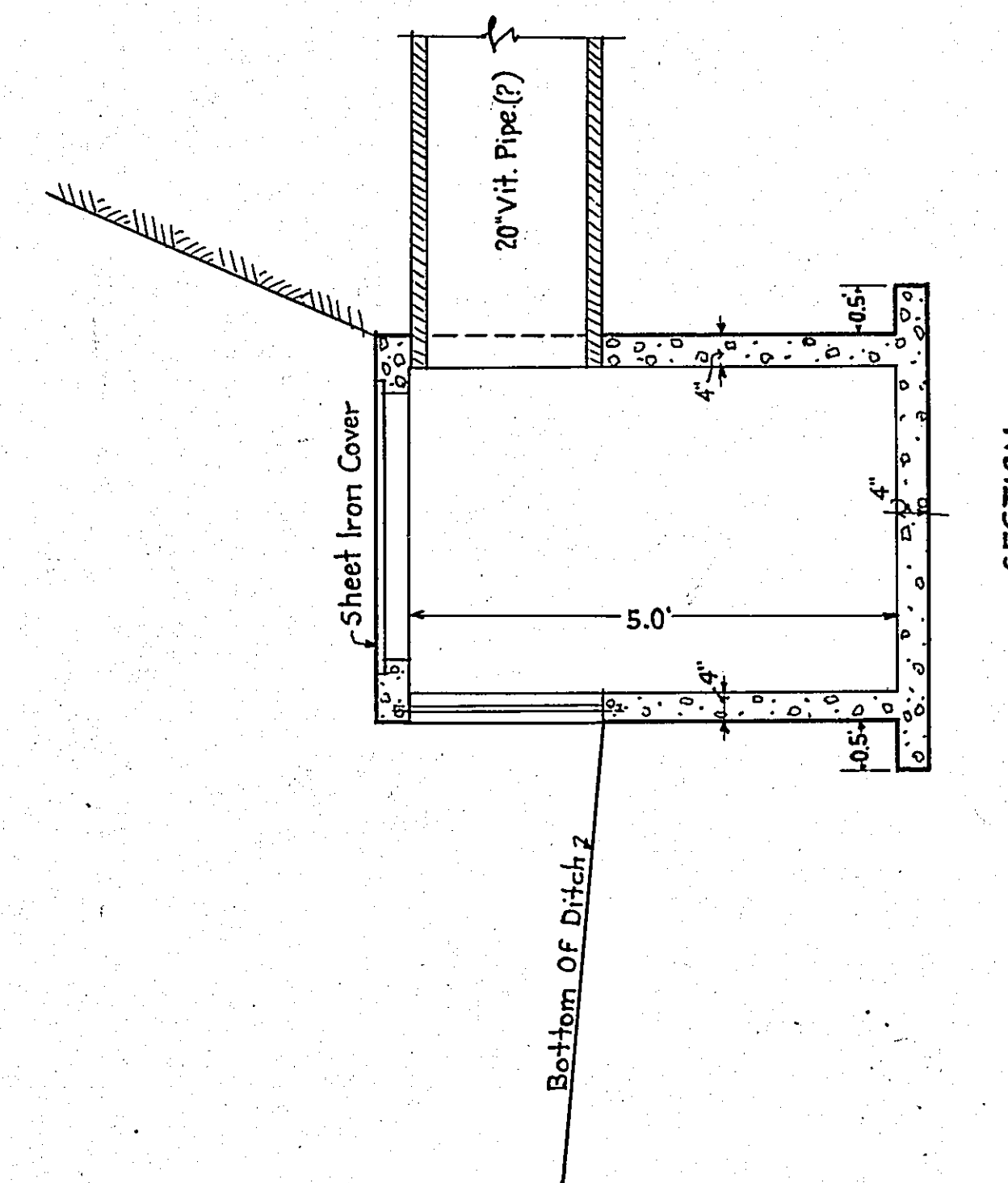
STATEMENT OF ESTIMATED QUANTITIES

CLASS	ITEM	UNIT	MILE From To	MILE From To	MILE From To	MILE From To	MILE From To	MILE From To	MILE From To	MILE From To	MILE From To	MILE From To	TOTAL ESTIMATED QUANTITIES
GRADING	1	Clearing	Trees										
	2	Grubbing	Trees										
	3	Clearing	Acres										
	4	Grubbing	Acres										
	5	Excavation (Trench)	Cu. Yds.	15,500									
	6	Backfill	Cu. Yds.	15,500									
	7	Excavation Solid Rock	Cu. Yds.										
	8	Excavation Overhaul	Cu. Yds.										
	9	Excavation Special	Cu. Yds.										
	10	Excavation Hand Ditch	Cu. Yds.	1,500									
	11	Install 12" C.M.	Lin. Ft.										
	12	Install 15" C.M.	Lin. Ft.										
	13	Install 18" C.M.	Lin. Ft.										
	14	Install 24" C.M.	Lin. Ft.										
	15	Install	Lin. Ft.										
	16	Install	Lin. Ft.										
	17	Install 18" Ps	Lin. Ft.										
	18	Install 24" Ps	Lin. Ft.										
	19	Install 30" Ps	Lin. Ft.										
	20	Install 36" Ps	Lin. Ft.										
	21	Install	Lin. Ft.										
	22	Install	Lin. Ft.										
	23	Remove Old Culvert	Lin. Ft.										
	24	Replace Old Culvert	Lin. Ft.										
	25	Finishing and Seeding	100 Sq.Yds.										
	26	Rubble Gutter	Cu. Yds.										
	27	Headwall Concrete	Cu. Yds.										
	28	Headwall Steel	Lbs.										
	29												
	30												
	31												
	32												
C.M. CULVERTS	1	Furnish 12" C.M.	Lin. Ft.										
	2	Furnish 15" C.M.	Lin. Ft.										
	3	Furnish 18" C.M.	Lin. Ft.										
	4	Furnish 24" C.M.	Lin. Ft.										
	5	Furnish	Lin. Ft.										
	6	Furnish	Lin. Ft.										
	7	Furnish 12" C.M. Band	Each										
	8	Furnish 15" C.M. Band	Each										
	9												
	10												
P <sub>3</sub> CULVERTS	1	Furnish 18" Ps	Lin. Ft.										
	2	Furnish 24" Ps	Lin. Ft.										
	3	Furnish 30" Ps	Lin. Ft.										
	4	Furnish 36" Ps	Lin. Ft.										
	5												
	6												
GUARD RAIL	1	Guard Rail - Cable	Lin. Ft.										
	2	Guard Rail Anchors	Each										
	3	Dummy Posts	Each										
	4												
SIDEWALKS AND CURBING	1	Concrete Curb - Straight	Lin. Ft.										
	2	Concrete Curb - Radius	Lin. Ft.										
	3	Remove Old Curb	Lin. Ft.										
	4	Remove Old Curb and Gutter	Lin. Ft.										
	5	Remove Old Sidewalk	Sq. Ft.										
	6	Replace Old Sidewalk	Sq. Ft.										
	7	Construct New Sidewalk	Sq. Ft.										
	8	Curb Inlet	Each										
	9	Catch Basin Complete	Each										
	10												
	11												
	12												
SEWER	1	12" Vitrified Sewer Pipe	Lin. Ft.										
	2	15" Vitrified Sewer Pipe	Lin. Ft.										
	3	18" Vitrified Sewer Pipe	Lin. Ft.										
	4	20" Vitrified Sewer Pipe	Lin. Ft.	200									
	5	24" Vitrified Sewer Pipe	Lin. Ft.										
	6	Manhole Complete	Each	9									
	7	Catch Basin Complete	Each	1									
	8	Remove Manhole	Each	2									
	9												
	10												
SURFACE	1	Loading Gravel	Cu. Yds.										
	2	Hauling Gravel	C.Y. Mi.										
	3	Shaping & Compacting	Cu. Yds.										
	4	Oil	Gal.										
	5	Cut-back	Sq. Yds.										
	6												
	7												
	8												
STRUCTURES	1	Concrete	Cu. Yds.										
	2	Reinforcing Steel	Lbs.										
	3	Excavation	Cu. Yds.										
	4	Piling	Lin. Ft.										
	5												
	6												
	7												
	8												
	9												
	10												

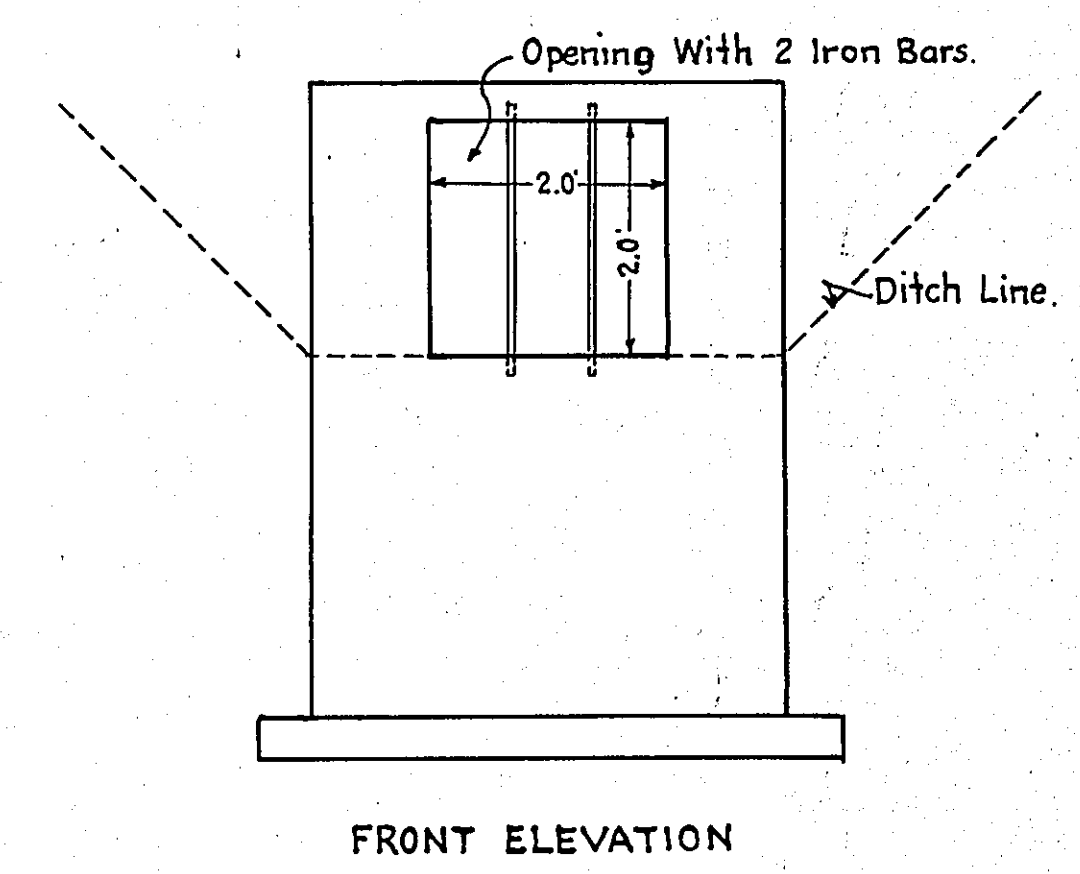
DETAILS



TYPICAL DITCH SECTION  
 STA. 0+00 TO STA. 0+9+00  
 STA. 37+74.56 TO STA. 59+00



DETAILS OF CATCH BASIN  
 STA. 0+00  
 Scale 1/2" = 1'-0"



FRONT ELEVATION

OFFICE OF  
 RAMSEY COUNTY SURVEYOR  
 HARRY S. BRONSON  
 DRAINAGE PLAN OF  
**DITCH No 5**  
 FROM WILSON LAKE TO JONES LAKE.  
 MAY 1941 SCALE AS SHOWN.

PLANNED BY *A.D. Crawford*  
 ASSISTANT ENGINEER

PLANS APPROVED 1941 *Harry S. Bronson*  
 COUNTY SURVEYOR

APPROVED 1941 *John J. McLaughlin*  
 CHAIRMAN COUNTY BOARD

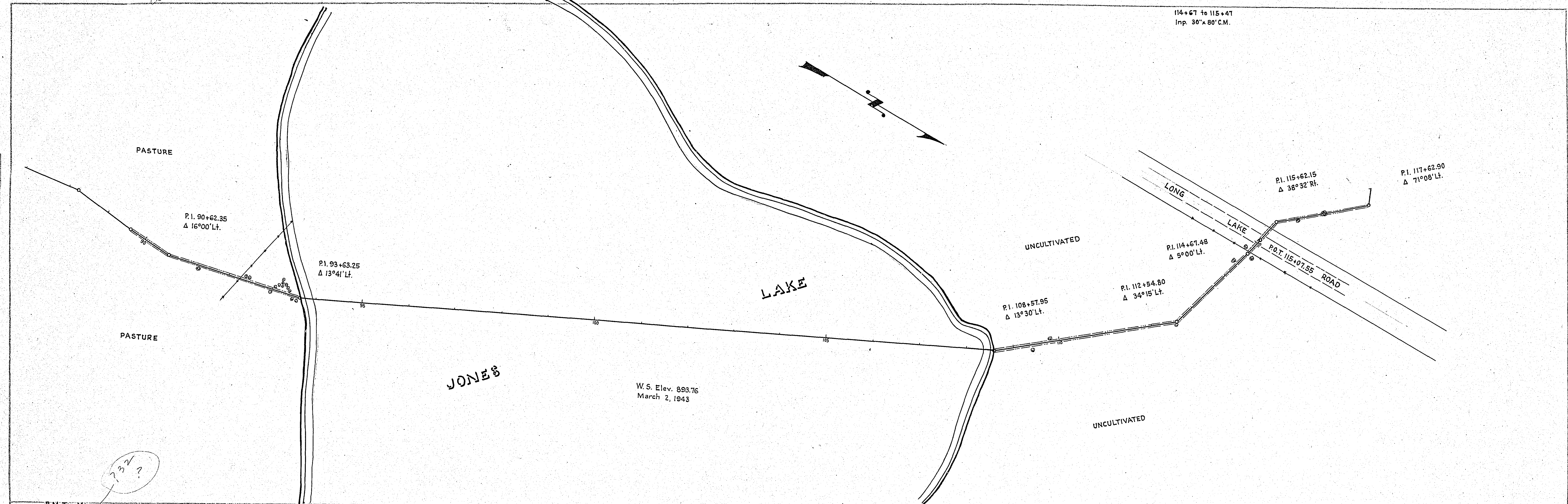
*also from Co. P.C.C. to  
 with Co. P.C.C. 1943  
 attached to rear of this  
 set.*



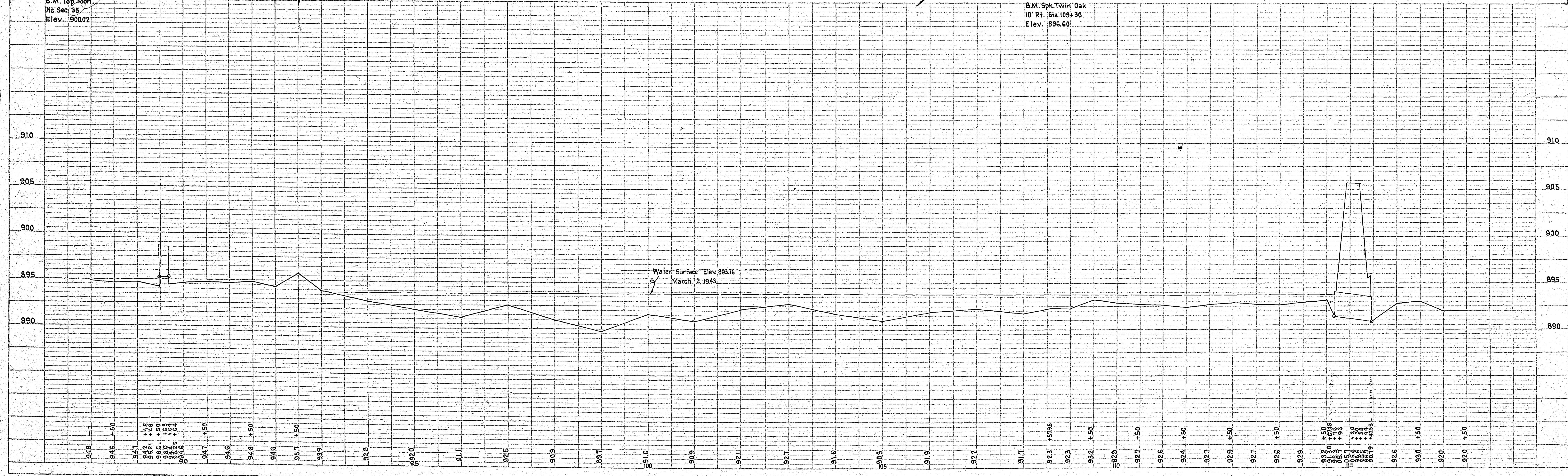
89+50?  
Curb?

114+67 to 115+47  
Inp. 30"x80" C.M.

PLAN	SURVEYED	DATE
	NOTED	BY
NOTE BOOK	ALIGNED	NO.
	CHECKED	
RT. OF WAY CHECKED		



PROFILE	SURVEYED	DATE
	NOTED	BY
NOTE BOOK	ALIGNED	NO.
	CHECKED	
STRUCTURE RATINGS CHECKED		



Printed in U.S.A.  
On Imperial Tracing Cloth

PLATE I-PLAN-PROFILE © P. R. STANDARD  
EUGENE DIEZGEN CO. CHICAGO-NEW YORK

Printed in U.S.A.  
Imperial Tracing Cloth

10 3207

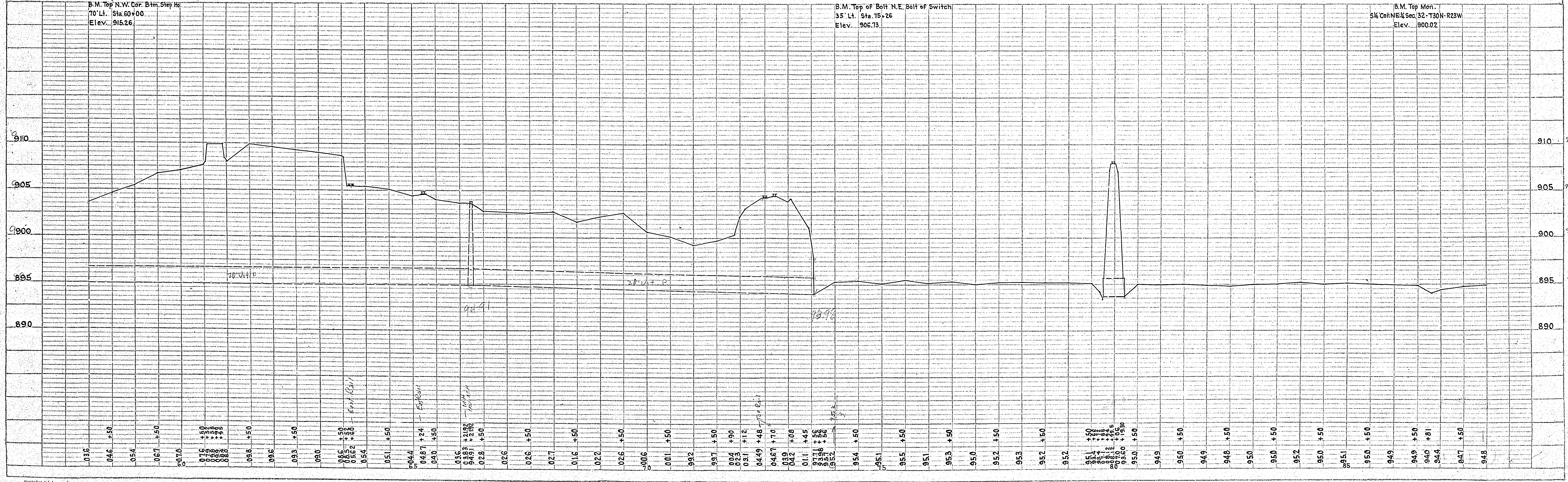
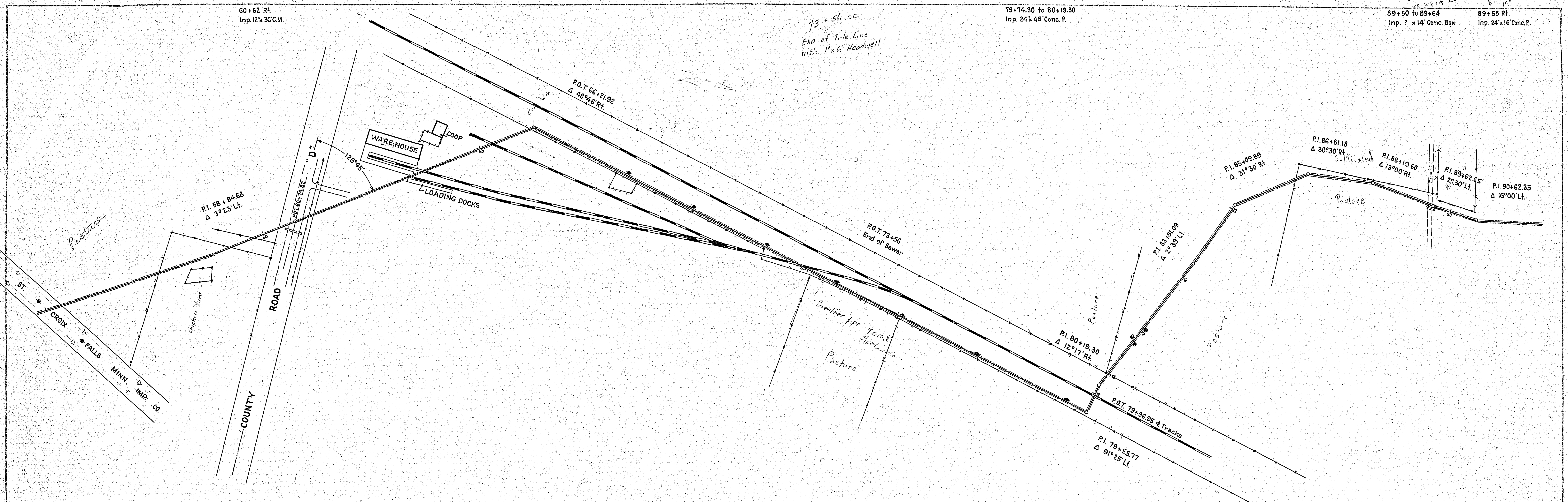






PLAN	SURVEYED	DATE
	PLOTTED	
	GRADES CHECKED	
	BY	
	NO.	

PROFILE	SURVEYED	DATE
	PLOTTED	
	GRADES CHECKED	
	BY	
	NO.	

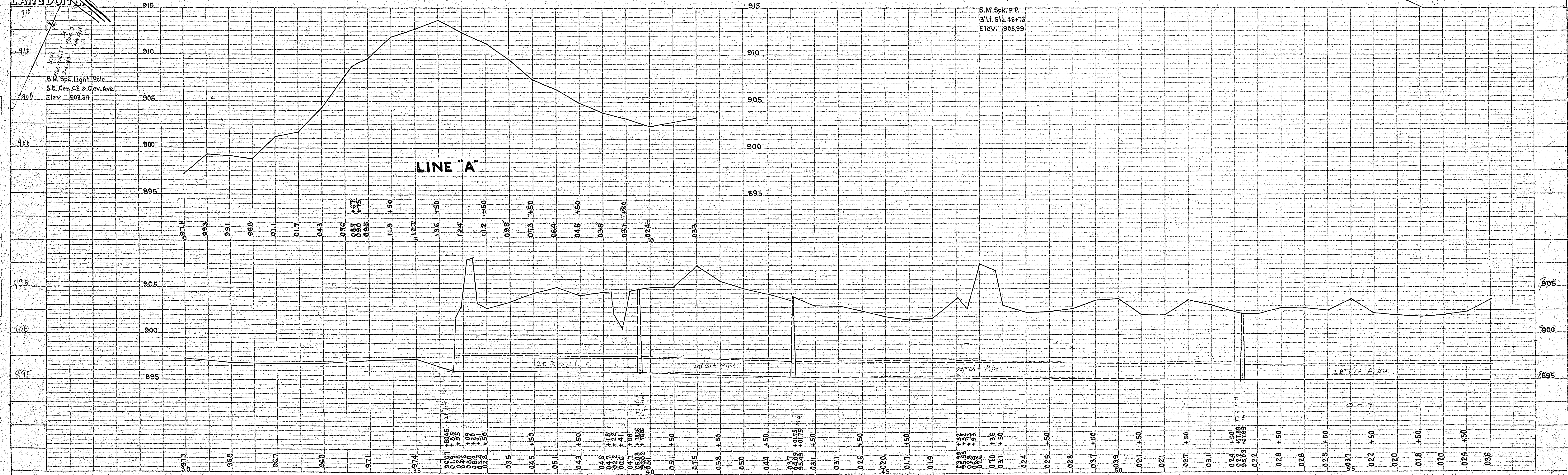
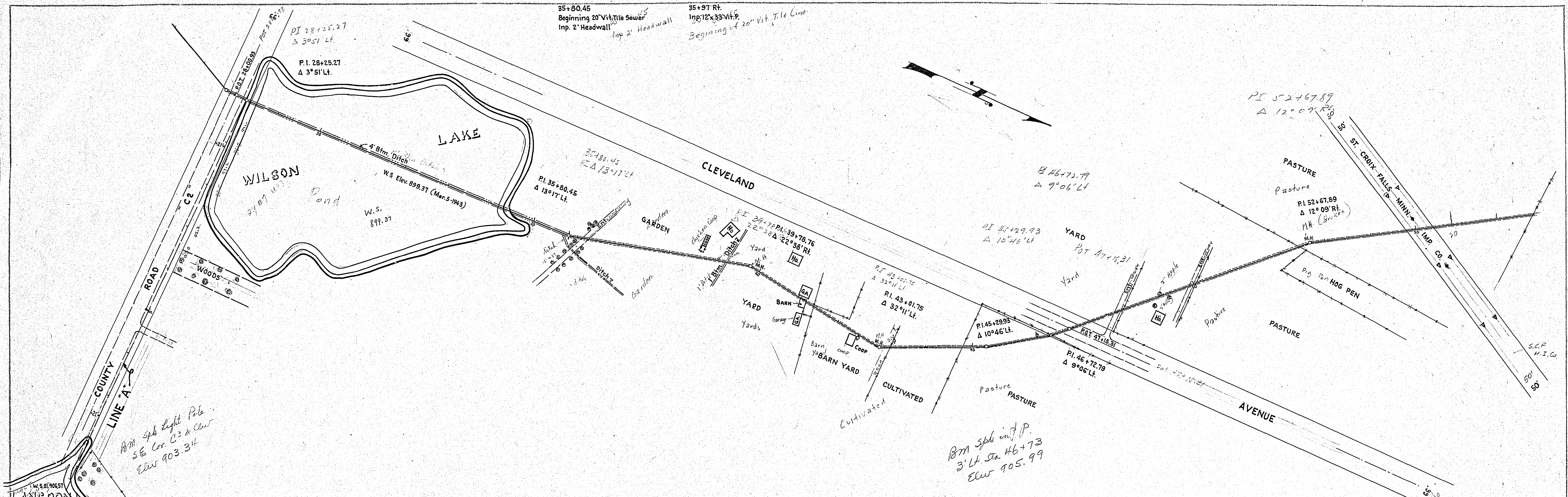


910 to 895



DATE	
BY	
PLAN	
NO.	
NOTE BOOK	
NO.	
ALIGNED CHECKED	
PLANNED	
DATE	

DATE	
BY	
PROFILE	
NO.	
NOTE BOOK	
NO.	
ALIGNED CHECKED	
PLANNED	
DATE	



895 to 910

Produced in U.S.A.  
By IMPERIAL Trading Club

PLATE I-PLAN-PROFILE S. P. R. STANDARD  
EUGENE BREYER CO. Chicago, New York

Produced in U.S.A.  
By IMPERIAL Trading Club



0+42 to 0+47  
 Imp. 24" x 89" Conc. P.

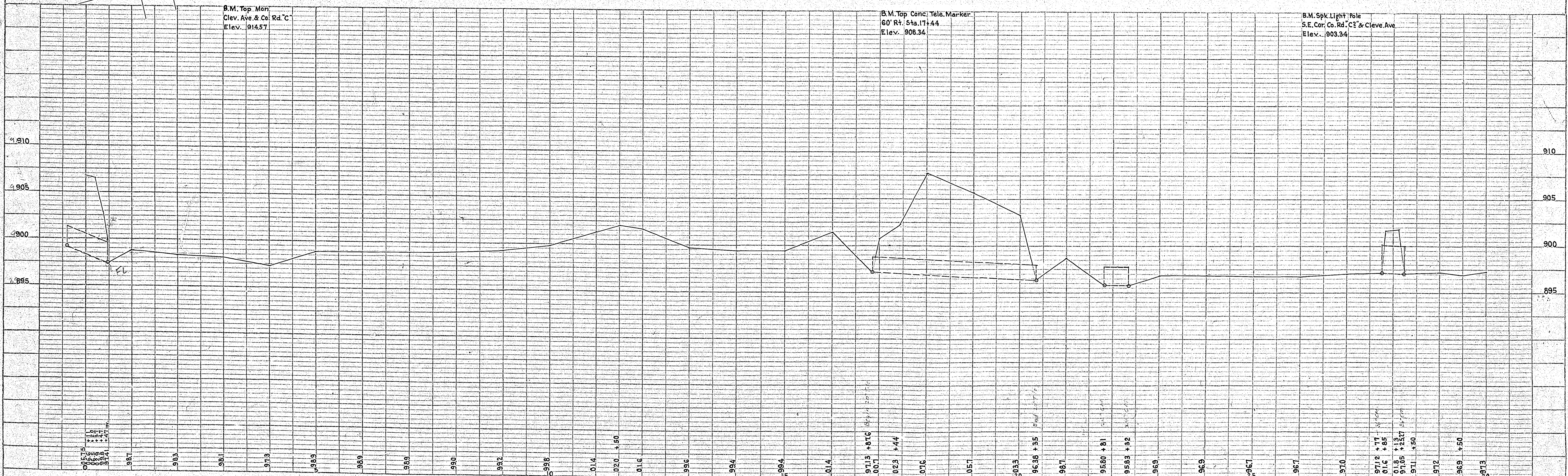
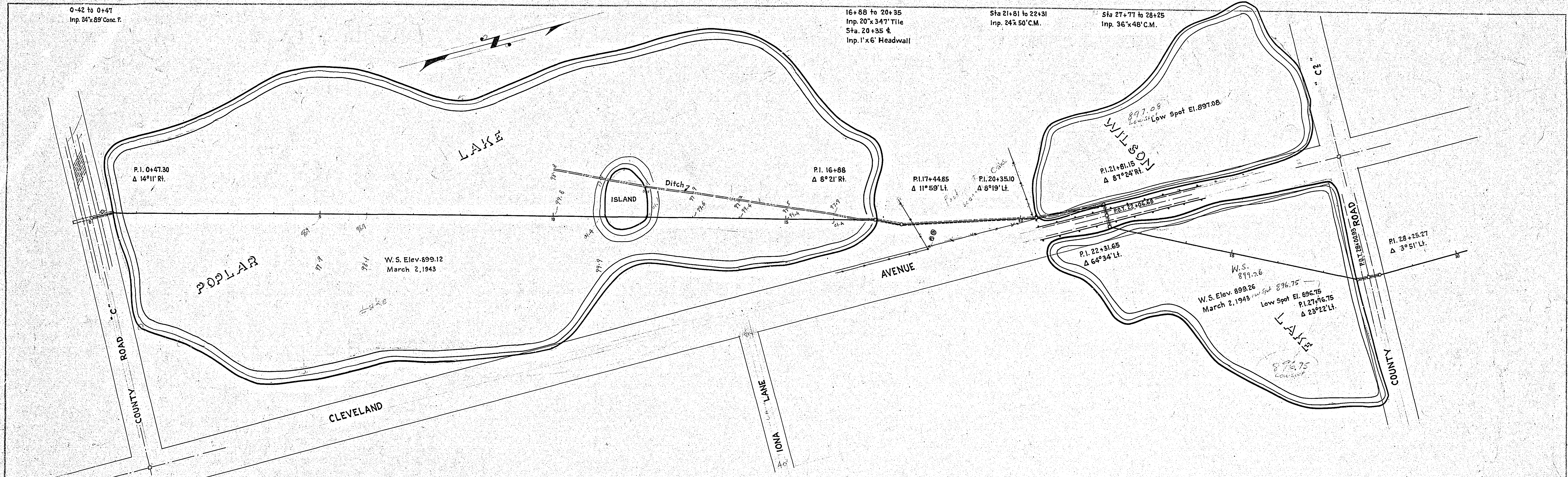
16+88 to 20+35  
 Imp. 20" x 34" Tile  
 Sta. 20+35  $\epsilon$   
 Imp. 1' x 6' Headwall

Sta 21+81 to 22+31  
 Imp. 24" x 50" C.M.

Sta 27+77 to 28+25  
 Imp. 36" x 48" C.M.

PLAN	SURVEYED	DATE
	PLOTTED	
	CHECKED	
	REVISIONS	
	BY	
	DATE	
	NO.	

PROFILE	SURVEYED	DATE
	PLOTTED	
	CHECKED	
	REVISIONS	
	BY	
	DATE	
	NO.	

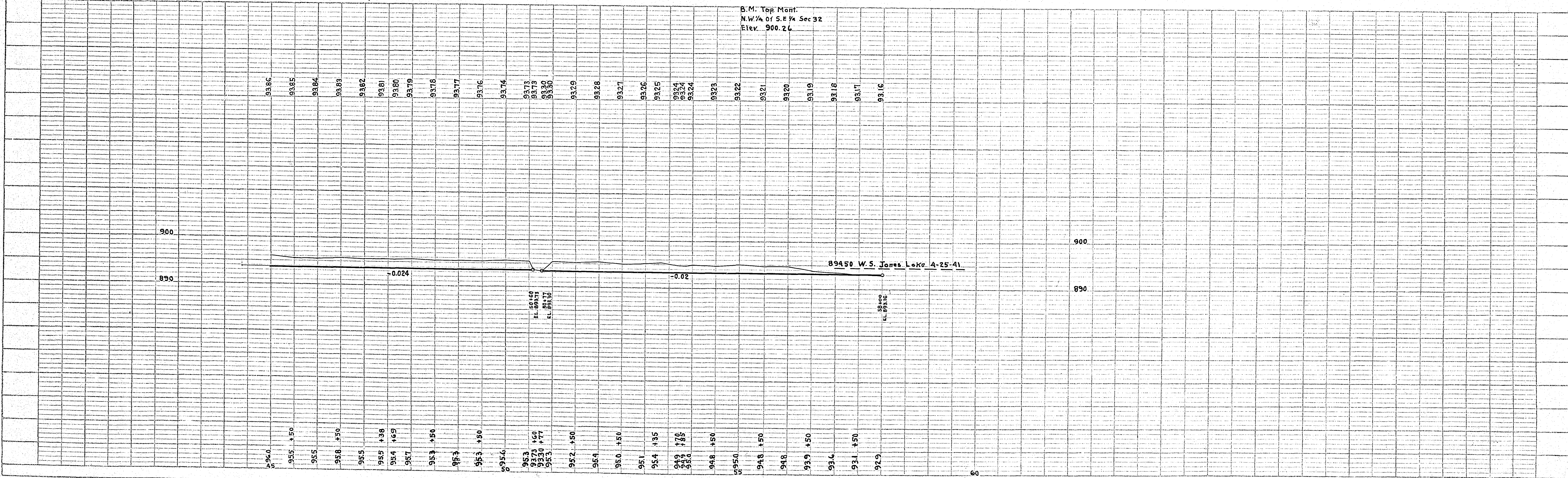
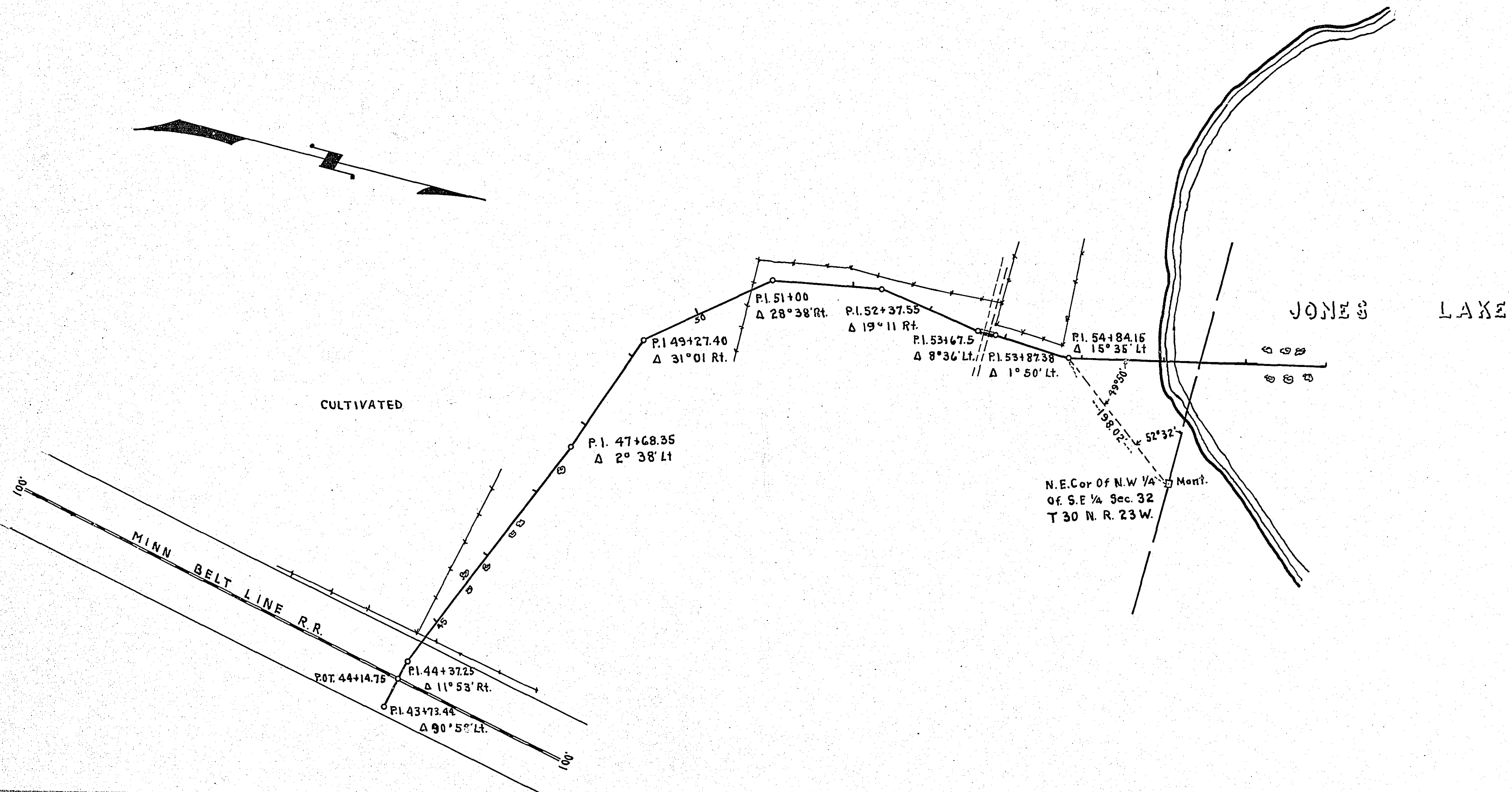


875 to 970



DATE	
BY	
PLAN	SURVEYED
	PLOTTED
	ALIGNED
	CHECKED
	BY
	NO.

DATE	
BY	
PROFILE	SURVEYED
	PLOTTED
	CHECKED
	BY
	NO.



Printed in U.S.A.  
 GO IMPERIAL Printing Co.

PLATE I-PLAN-PROFILE BY P. R. STANGARD  
 EUGENE DIEZGEN CO. CHICAGO, ILL.



