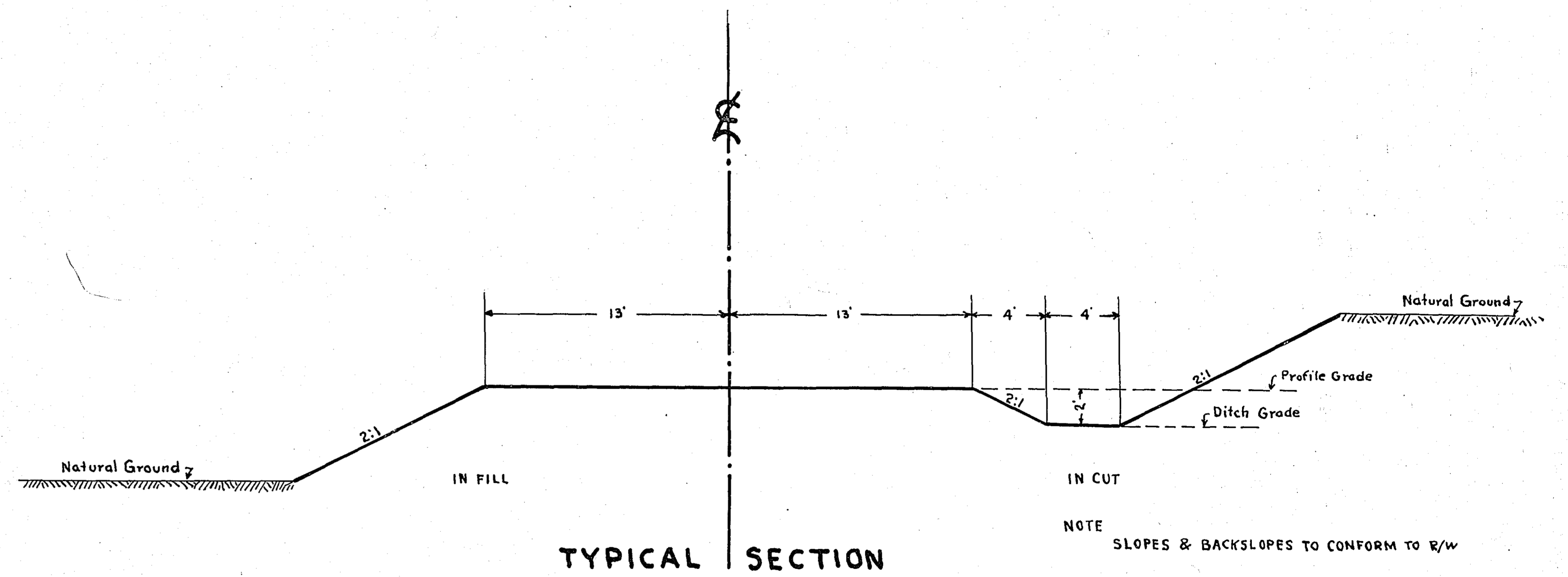


STATEMENT OF ESTIMATED QUANTITIES

CLASS	ITEM	UNIT	MILE From To	MILE From To	MILE From To	MILE From To	MILE From To	MILE From To	MILE From To	MILE From To	MILE From To	MILE From To	TOTAL ESTIMATED QUANTITIES
GRADING	1	Clearing	Trees	75									
	2	Grubbing	Trees	79									
	3	Clearing	Acres	0.12									
	4	Grubbing	Acres	0.12									
	5	Excavation Earth	Cu. Yds.	4120									
	6	Excavation Loose Rock	Cu. Yds.										
	7	Excavation Solid Rock	Cu. Yds.										
	8	Excavation Overhaul	Cu. Yds.										
	9	Excavation Special	Cu. Yds.										
	10	Excavation Hand Ditch	Cu. Yds.										
	11	Install 12" C.M.	Lin. Ft.										
	12	Install 15" C.M.	Lin. Ft.	154									
	13	Install 18" C.M.	Lin. Ft.	90									
	14	Install 24" C.M.	Lin. Ft.										
	15	Install	Lin. Ft.										
	16	Install	Lin. Ft.										
	17	Install 18" P3	Lin. Ft.										
	18	Install 24" P3	Lin. Ft.										
	19	Install 30" P3	Lin. Ft.										
	20	Install 36" P3	Lin. Ft.										
	21	Install	Lin. Ft.										
	22	Install	Lin. Ft.										
	23	Remove Old Culvert	Lin. Ft.										
	24	Replace Old Culvert	Lin. Ft.										
	25	Finishing	Sq. Yds.	20,000									
	26	Rubble Gutter	Cu. Yds.										
	27	Headwall Concrete	Cu. Yds.										
	28	Headwall Steel	Lbs.										
	29	Remove Fence	Lin. Ft.	257									
	30	Replace Fence	Lin. Ft.	185									
	31												
	32												
C.M. CULVERTS	1	Furnish 12" C.M.	Lin. Ft.										
	2	Furnish 15" C.M.	Lin. Ft.	154									
	3	Furnish 18" C.M.	Lin. Ft.	90									
	4	Furnish 24" C.M.	Lin. Ft.										
	5	Furnish	Lin. Ft.										
	6	Furnish	Lin. Ft.										
	7	Furnish 12" C.M. Band	Each										
	8	Furnish 15" C.M. Band	Each										
	9												
	10												
P3 CULVERTS	1	Furnish 18" P3	Lin. Ft.										
	2	Furnish 24" P3	Lin. Ft.										
	3	Furnish 30" P3	Lin. Ft.										
	4	Furnish 36" P3	Lin. Ft.										
	5												
	6												
GUARD RAIL	1	Guard Rail - Cable	Lin. Ft.	450									
	2	Guard Rail Anchors	Each										
	3	Dummy Posts	Each										
	4												
SIDEWALKS AND CURBING	1	Concrete Curb - Straight	Lin. Ft.										
	2	Concrete Curb - Radius	Lin. Ft.										
	3	Remove Old Curb	Lin. Ft.										
	4	Remove Old Curb and Gutter	Lin. Ft.										
	5	Remove Old Sidewalk	Sq. Ft.										
	6	Replace Old Sidewalk	Sq. Ft.										
	7	Construct New Sidewalk	Sq. Ft.										
	8	Curb Inlet	Each										
	9	Catch Basin Complete	Each										
	10												
	11												
	12												
SEWER	1	12" Vitrified Sewer Pipe	Lin. Ft.										
	2	15" Vitrified Sewer Pipe	Lin. Ft.										
	3	18" Vitrified Sewer Pipe	Lin. Ft.										
	4	20" Vitrified Sewer Pipe	Lin. Ft.										
	5	24" Vitrified Sewer Pipe	Lin. Ft.										
	6	Manhole Complete	Each										
	7	Catch Basin Complete	Each										
	8												
	9												
	10												
SURFACE	1	Loading Gravel	Cu. Yds.										
	2	Hauling Gravel	C.Y. Mi.										
	3	Shaping & Compacting	Cu. Yds.										
	4	Oil Stabilization	Sq. Yds.	6,500									
	5	Cut-back	Sq. Yds.										
	6	Gravel On Site	Cu. Yds.	250									
	7												
	8												
STRUCTURES	1	Concrete	Cu. Yds.										
	2	Reinforcing Steel	Lbs.										
	3	Excavation	Cu. Yds.										
	4	Piling	Lin. Ft.										
	5												
	6												
	7												
	8												
	9												
	10												

DETAILS



OFFICE OF
 RAMSEY COUNTY SURVEYOR
 HARRY S. BRONSON
 GRADING PLAN OF
COUNTY ROAD "B"
 FROM LEXINGTON AVE. TO VICTORIA ST.
 MAY 1941 SCALE AS SHOWN

PLANNED BY *A.D. Crumpton*
 ASSISTANT ENGINEER

PLANS APPROVED _____ 1941 _____ COUNTY SURVEYOR
 APPROVED _____ 1941 _____ CHAIRMAN COUNTY BOARD
 APPROVED _____ 1941 _____ CHAIRMAN ROSE TOWNSHIP BOARD

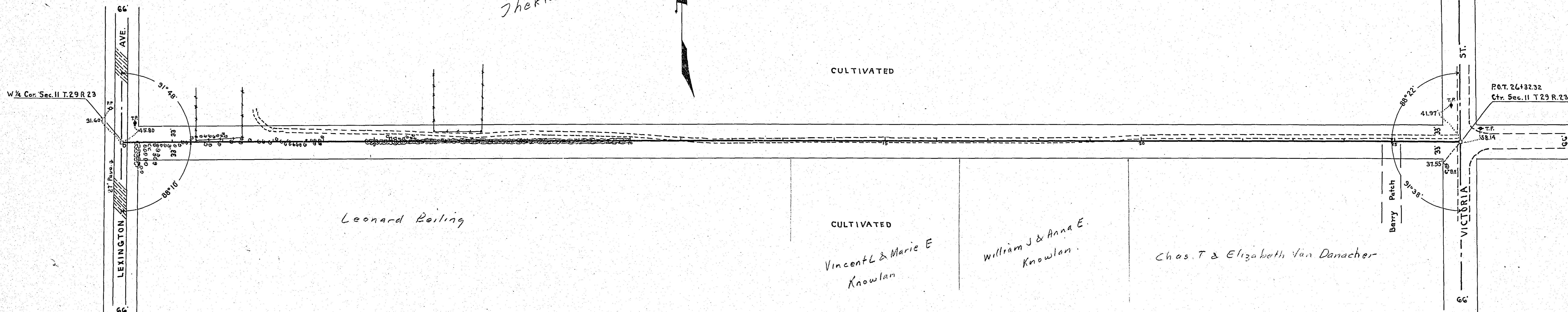
0+25 E.
Pl. 18" x 34' C.M.

NOTE:
Place G - 15" x 20' C.M.
As directed by the engineer

21+00 E.
Pl. 18" x 56' C.M.

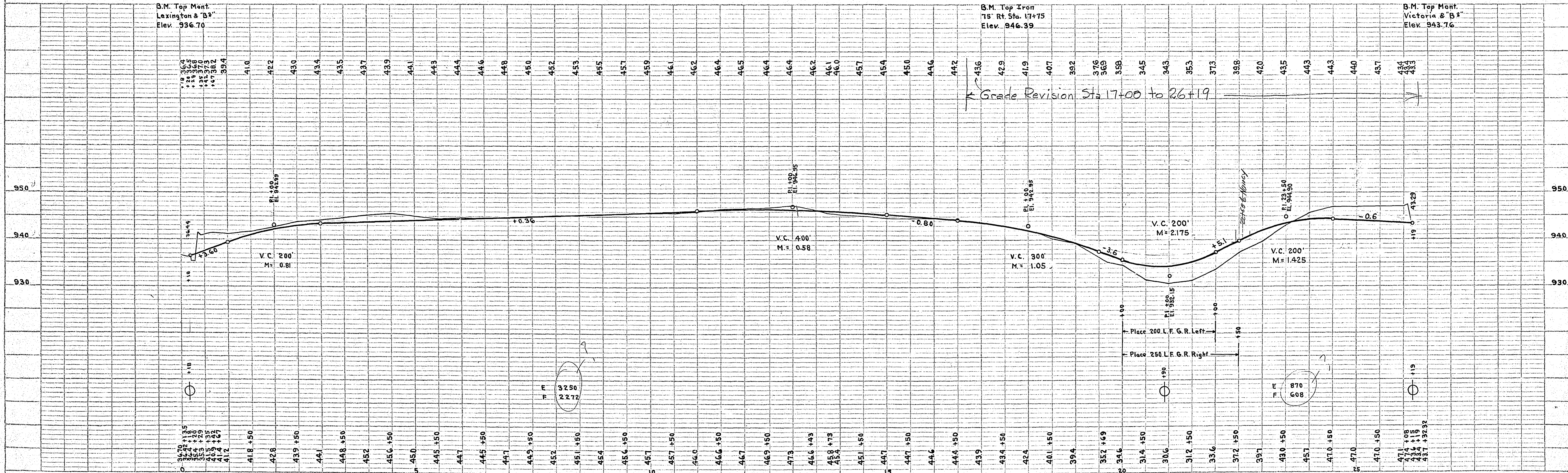
26+19 E.
Pl. 15" x 34' C.M.

Jhekla Bertha Haas



DATE	
BY	
REVISIONS	
NO.	
DATE	
BY	
REVISIONS	
NO.	
DATE	
BY	
REVISIONS	
NO.	

DATE	
BY	
REVISIONS	
NO.	
DATE	
BY	
REVISIONS	
NO.	
DATE	
BY	
REVISIONS	
NO.	



Printed in U.S.A.
OR INTERIOR Trading Club

PLATE I-PLAN-PROFILE D. P. H. STANDARD
ENGINEERS INC. - Chicago, New York

Co. R. D. B.

SHEET 2 OF 4 SHEETS