

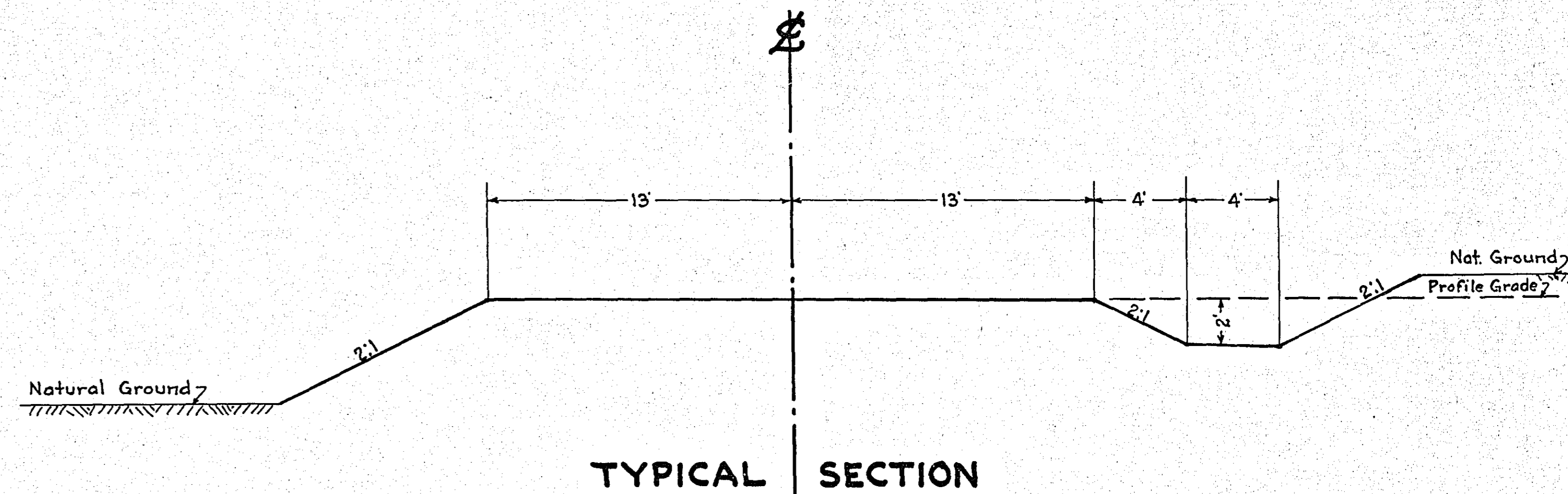
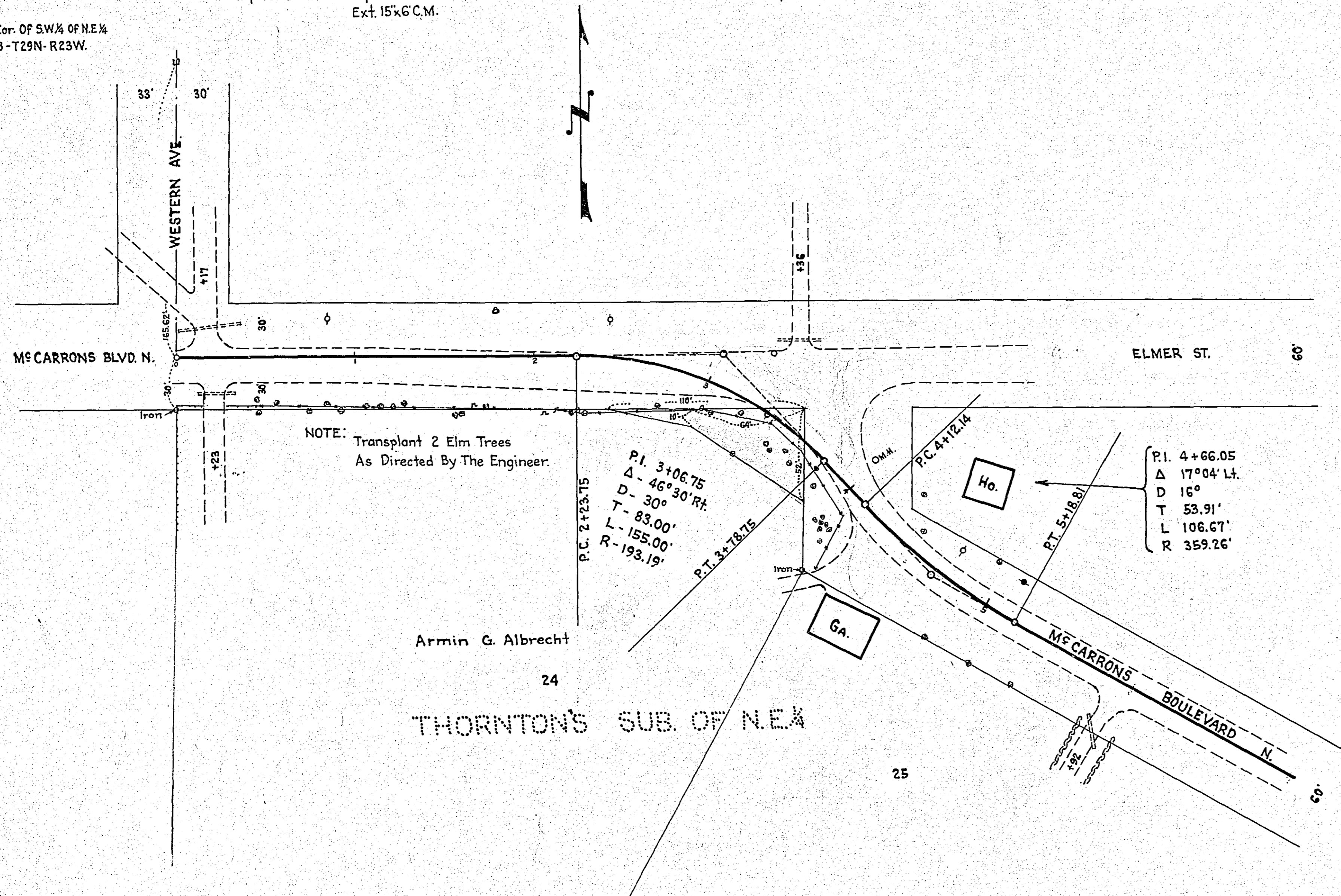
Mon. N.W. Cor. Of SW 1/4 OF N.E. 1/4  
Sec. 19-T29N-R23W.

0+17 L.T.  
Imp. 15'x36' C.M.

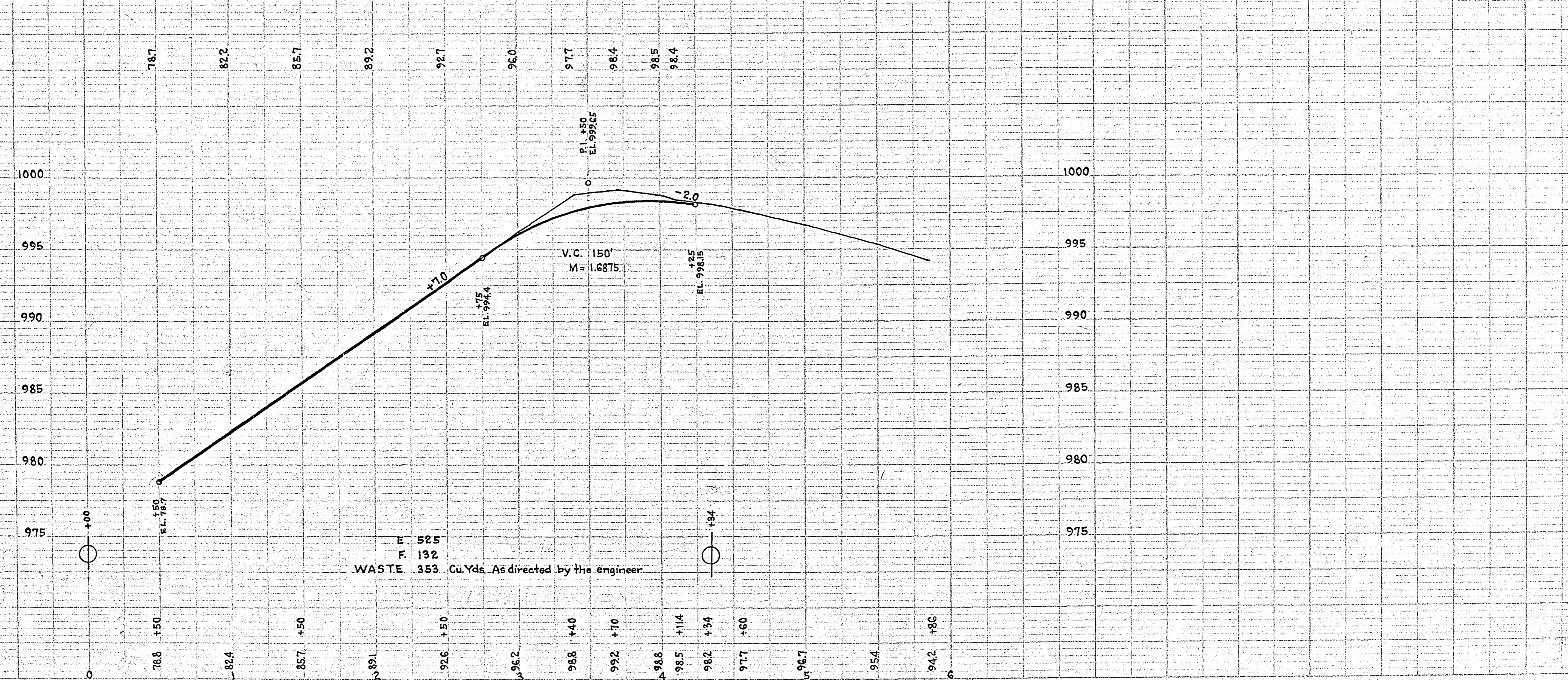
0+23 R.T.  
Imp. 15'x20' C.M.  
Ext. 15'x6' C.M.

3+36 L.T.  
Imp. 24'x24' C.M.

5+92 R.T.  
Imp. 12'x20' C.M.



B.M. Spk. 20' Oak  
33' Lt. Sta. 0-02  
Elev. 877.64



**ESTIMATED QUANTITIES**

Clearing	Trees	15
Grubbing	Trees	15
Excavation	Cu.Yds.	525
Finishing	Sq.Yds.	1500
Blacktop (1/2 Lease)	Sq.Yds.	1155
Furnish 15' C.M.	Lin. Ft.	6
Gravel On Site	Cu.Yds.	38
Oil Stabilization	Sq.Yds.	1000
Remove Fence	Lin. Ft.	400
Replace Fence	" "	350
Place 15' C.M.	" "	6

OFFICE OF  
RAMSEY COUNTY SURVEYOR  
HARRY S. BRONSON  
GRADING PLAN OF  
**MCCARRONS BLVD. NO.**  
AT ELMER ST.

JUNE 1940 SCALE AS SHOWN

PLANNED BY *A.D. Cranston*  
ASSISTANT ENGINEER

PLANS APPROVED 10/21 1940 *Harry S. Bronson*  
COUNTY SURVEYOR

APPROVED 10/21 1940 *J. S. ...*  
CHAIRMAN COUNTY BOARD