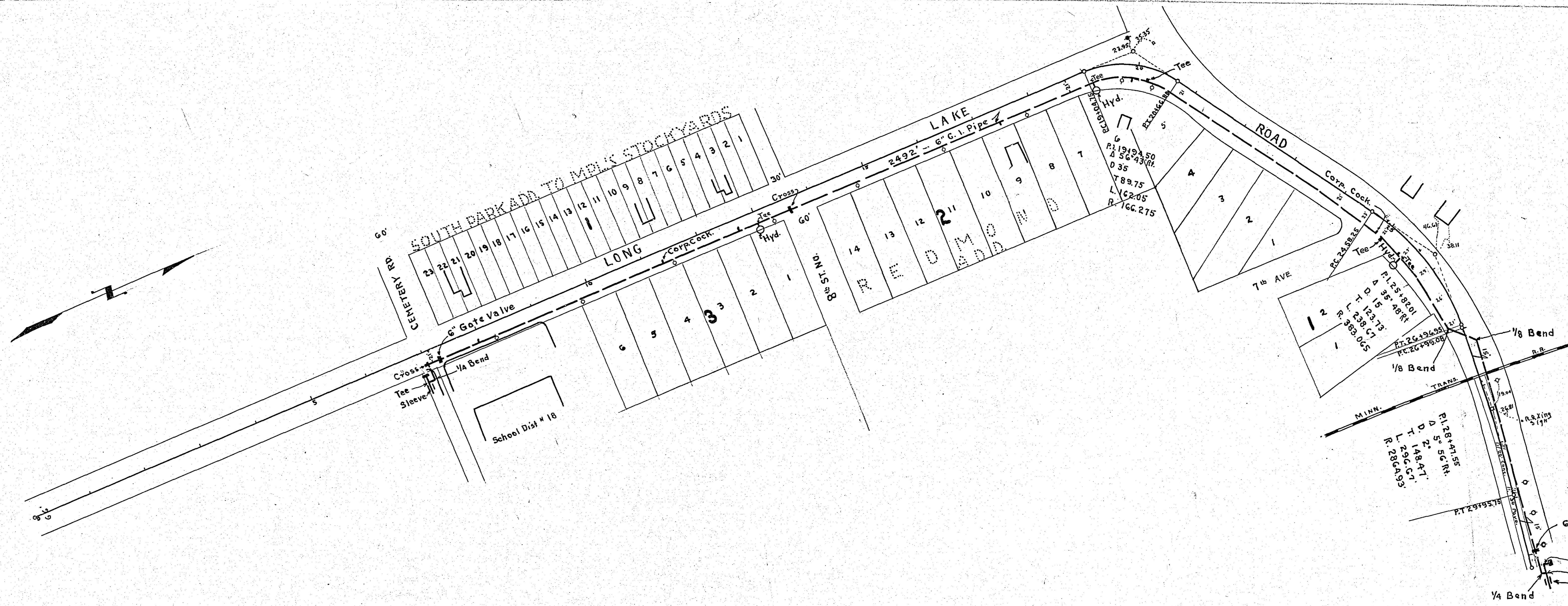


DATE	
BY	
PLAN	
REVISIONS	
NOTED	
NOT CHECKED	
NO. OF WAY CHECKED	
NO.	



DATE	
BY	
PROFILE	
REVISIONS	
NOTED	
NOT CHECKED	
NO. OF WAY CHECKED	
NO.	

B.M. Top Water Table
Schoolhouse
Elev. 906.48

B.M. Top Hyd.
24' Lt. Sta. 31+22
Elev. 887.10

ESTIMATED QUANTITIES

6" C.I. Water Pipe	Class 150	Lin. Ft.	2492
6" C.I. Sleeve	" " D"	Each	2
6" C.I. Tee	" " D"	"	7
6" Gate Valve	" 150"	"	2
6" Box Complete		"	2
6" C.I. 1/8 Bends Bell Spigot Class "D"		"	3
6" C.I. 1/8 Bends " " " " D"		"	2
Hydrant Complete		"	3
Drip Box Wooden		"	3
1" Corporation Cocks		"	8
6" C.I. Cross	Class "D"	Ea	2
Lead		Lbs	2500
Caulking Yarn		"	100
6" C.I. Plugs		Each	6
Trenching		Cu. Yds	2700
Backfilling		Cu. Yds	2700

GENERAL NOTE: WATER MAINS TO BE LAID
7 1/2 FT. BELOW NATURAL GROUND

OFFICE OF
RAMSEY COUNTY SURVEYOR
HARRY S. BRONSON
PLAN OF PROPOSED WATER MAIN
VILLAGE OF NEW BRIGHTON
LONG LAKE ROAD

SEPT. 1940 SCALE AS SHOWN

PLANNED BY *A. D. Casper*
ASSISTANT ENGINEER
PLANS APPROVED 9/16/1940 *Harry S. Bronson*
COUNTY SURVEYOR
APPROVED 9/16/1940 *John J. McLaughlin*
CHAIRMAN COUNTY BOARD
APPROVED 9-19-1940 *W. B. Bronson*
MAYOR NEW BRIGHTON VILLAGE

